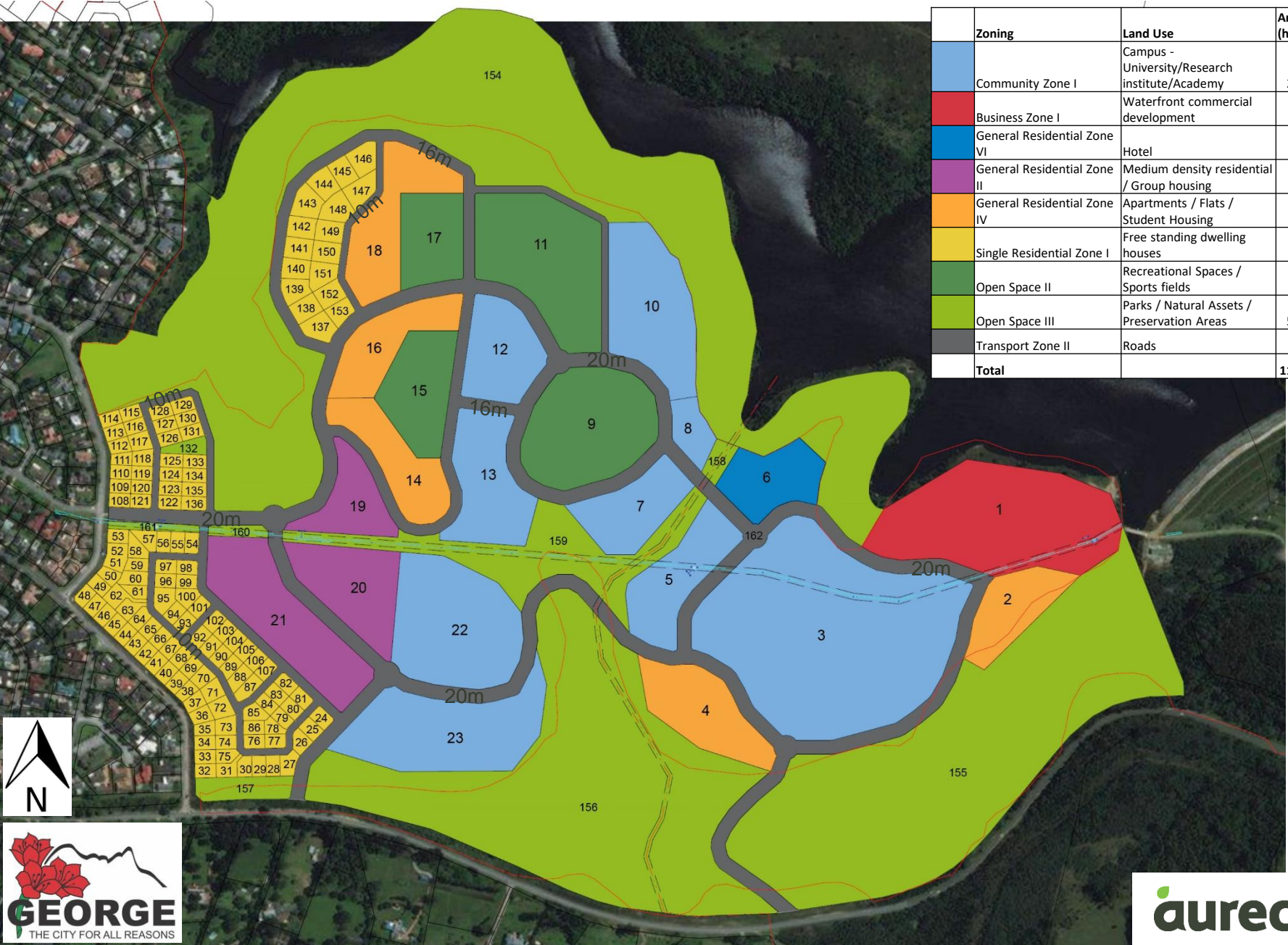


Portion of the Remainder of Erf 464, George - Rezoning and Subdivision in terms of Section 15 of the George Municipality Land Use Planning By-Law, 2015.



Zoning	Land Use	Area (ha)	% of Area
Community Zone I	Campus - University/Research institute/Academy	22,15	19%
Business Zone I	Waterfront commercial development	4,31	4%
General Residential Zone VI	Hotel	1,15	1%
General Residential Zone II	Medium density residential / Group housing	4,97	4%
General Residential Zone IV	Apartments / Flats / Student Housing	6,91	6%
Single Residential Zone I	Free standing dwelling houses	9,32	8%
Open Space II	Recreational Spaces / Sports fields	8,22	7%
Open Space III	Parks / Natural Assets / Preservation Areas	52,08	44%
Transport Zone II	Roads	9,39	8%
Total		118,50	100%

