

**SCREENING REPORT FOR AN ENVIRONMENTAL AUTHORIZATION OR  
FOR A PART TWO AMENDMENT OF AN ENVIRONMENTAL AUTHORISATION  
AS REQUIRED BY THE 2014 EIA REGULATIONS – PROPOSED SITE  
ENVIRONMENTAL SENSITIVITY**

**EIA Reference number:** 16/3/3/5/D2/19/005/16

**Project name:** APPLICATION FOR AMENDMENT OF THE EA FOR THE PROPOSED DEVELOPMENT OF A RETIREMENT VILLAGE AND ASSOCIATED INFRASTRUCTURE ON PORTION 3 OF THE FARM KRAAIBOSCH 195, GEORGE, WESTERN CAPE

**Project title:** APPLICATION FOR AMENDMENT OF THE EA FOR THE PROPOSED DEVELOPMENT OF A RETIREMENT VILLAGE AND ASSOCIATED INFRASTRUCTURE ON PORTION 3 OF THE FARM KRAAIBOSCH 195, GEORGE, WESTERN CAPE

**Date screening report generated:** 17/03/2020 13:53:15

**Applicant:** GROENKLOOF ONTWIKKELINGS

**Compiler:** SHARPLES ENVIRONMENTAL SERVICES.cc

**Compiler signature:**

.....

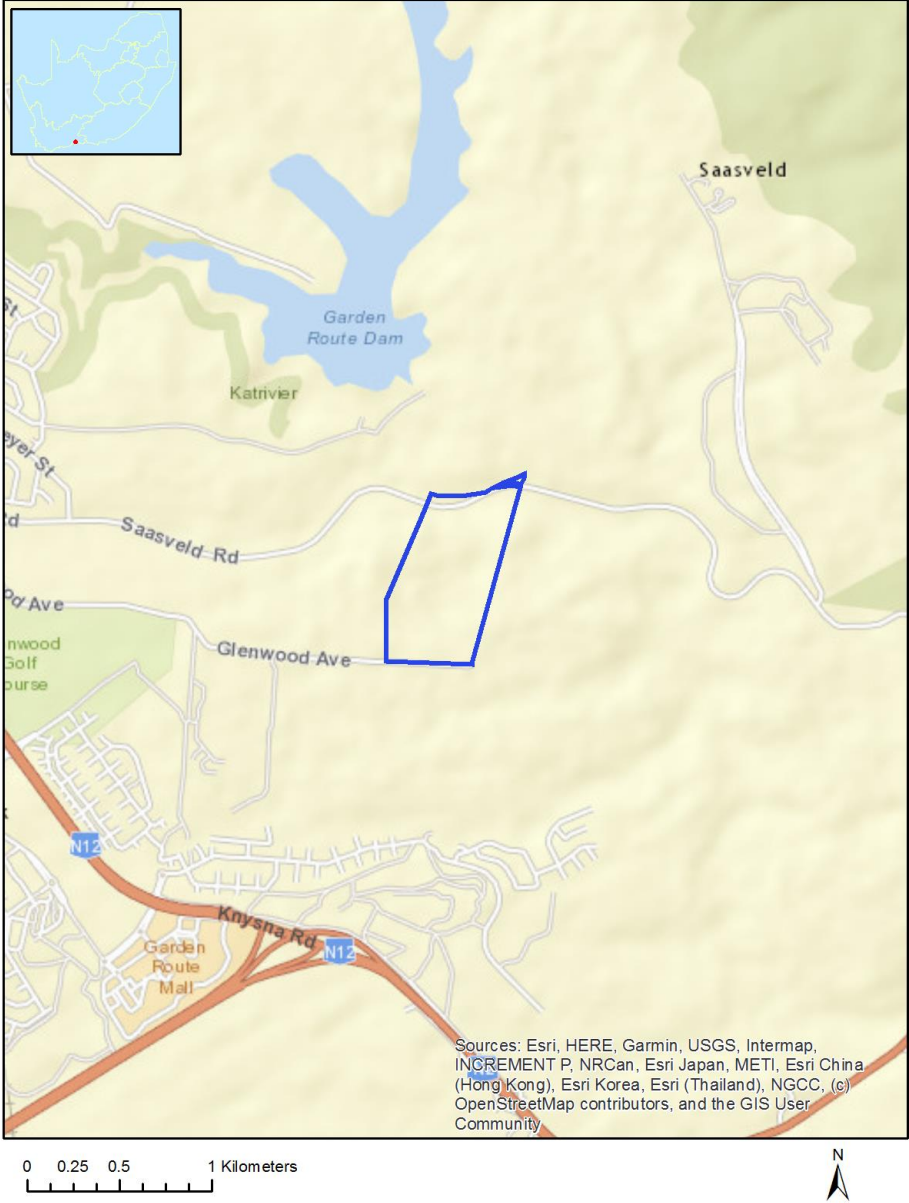
## Table of Contents

Proposed Project Location .....	3
Orientation map 1: General location .....	3
Map of proposed site and relevant area(s) .....	4
Cadastral details of the proposed site .....	4
Wind and Solar developments with an approved Environmental Authorisation or applications under consideration within 30 km of the proposed area .....	4
Environmental Management Frameworks relevant to the application .....	4
Environmental screening results and assessment outcomes .....	5
Relevant development incentives, restrictions, exclusions or prohibitions .....	5
Map indicating proposed development footprint within applicable development incentive, restriction, exclusion or prohibition zones .....	6
Proposed Development Area Environmental Sensitivity .....	6
Specialist assessments identified .....	7
Results of the environmental sensitivity of the proposed area .....	9
MAP OF RELATIVE AGRICULTURE THEME SENSITIVITY .....	9
MAP OF RELATIVE ANIMAL SPECIES THEME SENSITIVITY .....	10
MAP OF RELATIVE AQUATIC BIODIVERSITY THEME SENSITIVITY .....	11
MAP OF RELATIVE ARCHAEOLOGICAL AND CULTURAL HERITAGE THEME SENSITIVITY .....	12
MAP OF RELATIVE CIVIL AVIATION THEME SENSITIVITY .....	13
MAP OF RELATIVE PLANT SPECIES THEME SENSITIVITY .....	14
MAP OF RELATIVE DEFENCE THEME SENSITIVITY .....	15
MAP OF RELATIVE TERRESTRIAL BIODIVERSITY THEME SENSITIVITY .....	16

# Proposed Project Location

## Orientation map 1: General location

**General Orientation: APPLICATION FOR AMENDMENT OF THE EA FOR THE PROPOSED DEVELOPMENT OF A RETIREMENT VILLAGE AND ASSOCIATED INFRASTRUCTURE ON PORTION 3 OF THE FARM KRAAIBOSCH 195, GEORGE, WESTERN CAPE**



## Map of proposed site and relevant area(s)



## Cadastral details of the proposed site

Property details:

No	Farm Name	Farm/ Erf No	Portion	Latitude	Longitude	Property Type
1	KRAAI BOSCH	195	0	33°58'17.73S	22°30'59.91E	Farm
2	KRAAI BOSCH	195	3	33°58'15.19S	22°30'59.81E	Farm Portion

Development footprint<sup>1</sup> vertices:  
No development footprint(s) specified.

## Wind and Solar developments with an approved Environmental Authorisation or applications under consideration within 30 km of the proposed area

No	EIA Reference No	Classification	Status of application	Distance from proposed area (km)
1	14/12/16/3/3/1/1292	Solar PV	Approved	14.3

## Environmental Management Frameworks relevant to the application

No intersections with EMF areas found.

<sup>1</sup> “development footprint”, means the area within the site on which the development will take place and includes all ancillary developments for example roads, power lines, boundary walls, paving etc. which require vegetation clearance or which will be disturbed and for which the application has been submitted.

# Environmental screening results and assessment outcomes

The following sections contain a summary of any development incentives, restrictions, exclusions or prohibitions that apply to the proposed development site as well as the most environmental sensitive features on the site based on the site sensitivity screening results for the application classification that was selected. The application classification selected for this report is: Any activities within or close to a watercourse | Any activities within or close to a watercourse.

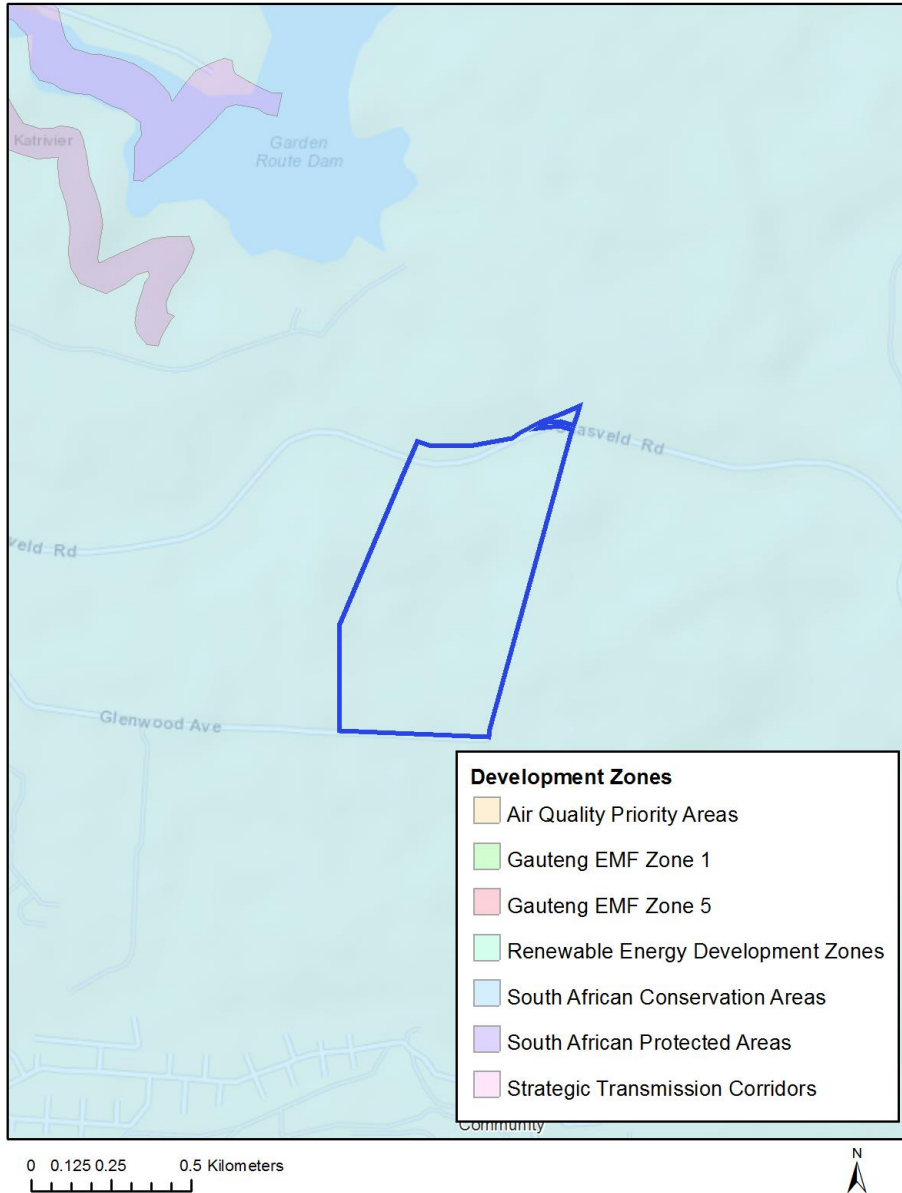
## Relevant development incentives, restrictions, exclusions or prohibitions

The following development incentives, restrictions, exclusions or prohibitions and their implications that apply to this site are indicated below.

<b>Incentive, restriction or prohibition</b>	<b>Implication</b>
South African Conservation Areas	<a href="https://screening.environment.gov.za/ScreeningDownloads/DevelopmentZones/SACAD_OR_2019_Q4_Metadata.pdf">https://screening.environment.gov.za/ScreeningDownloads/DevelopmentZones/SACAD_OR_2019_Q4_Metadata.pdf</a>

Map indicating proposed development footprint within applicable development incentive, restriction, exclusion or prohibition zones

**Project Location: APPLICATION FOR AMENDMENT OF THE EA FOR THE PROPOSED DEVELOPMENT OF A RETIREMENT VILLAGE AND ASSOCIATED INFRASTRUCTURE ON PORTION 3 OF THE FARM KRAAIBOSCH 195, GEORGE, WESTERN CAPE**



**Proposed Development Area Environmental Sensitivity**

The following summary of the development site environmental sensitivities is identified. Only the highest environmental sensitivity is indicated. The footprint environmental sensitivities for the proposed development footprint as identified, are indicative only and must be verified on site by a suitably qualified person before the specialist assessments identified below can be confirmed.

Theme	Very High	High	Medium	Low
-------	-----------	------	--------	-----

	sensitivity	sensitivity	sensitivity	sensitivity
Agriculture Theme			X	
Animal Species Theme		X		
Aquatic Biodiversity Theme	X			
Archaeological and Cultural Heritage Theme		X		
Civil Aviation Theme		X		
Plant Species Theme			X	
Defence Theme				X
Terrestrial Biodiversity Theme	X			

### Specialist assessments identified

Based on the selected classification, and the environmental sensitivities of the proposed development footprint, the following list of specialist assessments have been identified for inclusion in the assessment report. It is the responsibility of the EAP to confirm this list and to motivate in the assessment report, the reason for not including any of the identified specialist study including the provision of photographic evidence of the site situation.

N o	Specialist assessment	Assessment Protocol
1	Landscape/Visual Impact Assessment	<a href="https://screening.environment.gov.za/ScreeningDownloads/AssessmentProtocols/DraftGazetted_General_Requirement_Assessment_Protocols.pdf">https://screening.environment.gov.za/ScreeningDownloads/AssessmentProtocols/DraftGazetted_General_Requirement_Assessment_Protocols.pdf</a>
2	Archaeological and Cultural Heritage Impact Assessment	<a href="https://screening.environment.gov.za/ScreeningDownloads/AssessmentProtocols/DraftGazetted_General_Requirement_Assessment_Protocols.pdf">https://screening.environment.gov.za/ScreeningDownloads/AssessmentProtocols/DraftGazetted_General_Requirement_Assessment_Protocols.pdf</a>
3	Palaeontology Impact Assessment	<a href="https://screening.environment.gov.za/ScreeningDownloads/AssessmentProtocols/DraftGazetted_General_Requirement_Assessment_Protocols.pdf">https://screening.environment.gov.za/ScreeningDownloads/AssessmentProtocols/DraftGazetted_General_Requirement_Assessment_Protocols.pdf</a>
4	Terrestrial Biodiversity Impact Assessment	<a href="https://screening.environment.gov.za/ScreeningDownloads/AssessmentProtocols/DraftGazetted_Terrestrial_Biodiversity_Assessment_Protocols.pdf">https://screening.environment.gov.za/ScreeningDownloads/AssessmentProtocols/DraftGazetted_Terrestrial_Biodiversity_Assessment_Protocols.pdf</a>
5	Aquatic Biodiversity Impact Assessment	<a href="https://screening.environment.gov.za/ScreeningDownloads/AssessmentProtocols/DraftGazetted_Aquatic_Biodiversity_Assessment.pdf">https://screening.environment.gov.za/ScreeningDownloads/AssessmentProtocols/DraftGazetted_Aquatic_Biodiversity_Assessment.pdf</a>
6	Hydrology Assessment	<a href="https://screening.environment.gov.za/ScreeningDownloads/AssessmentProtocols/DraftGazetted_General_Requirement_Assessment_Protocols.pdf">https://screening.environment.gov.za/ScreeningDownloads/AssessmentProtocols/DraftGazetted_General_Requirement_Assessment_Protocols.pdf</a>

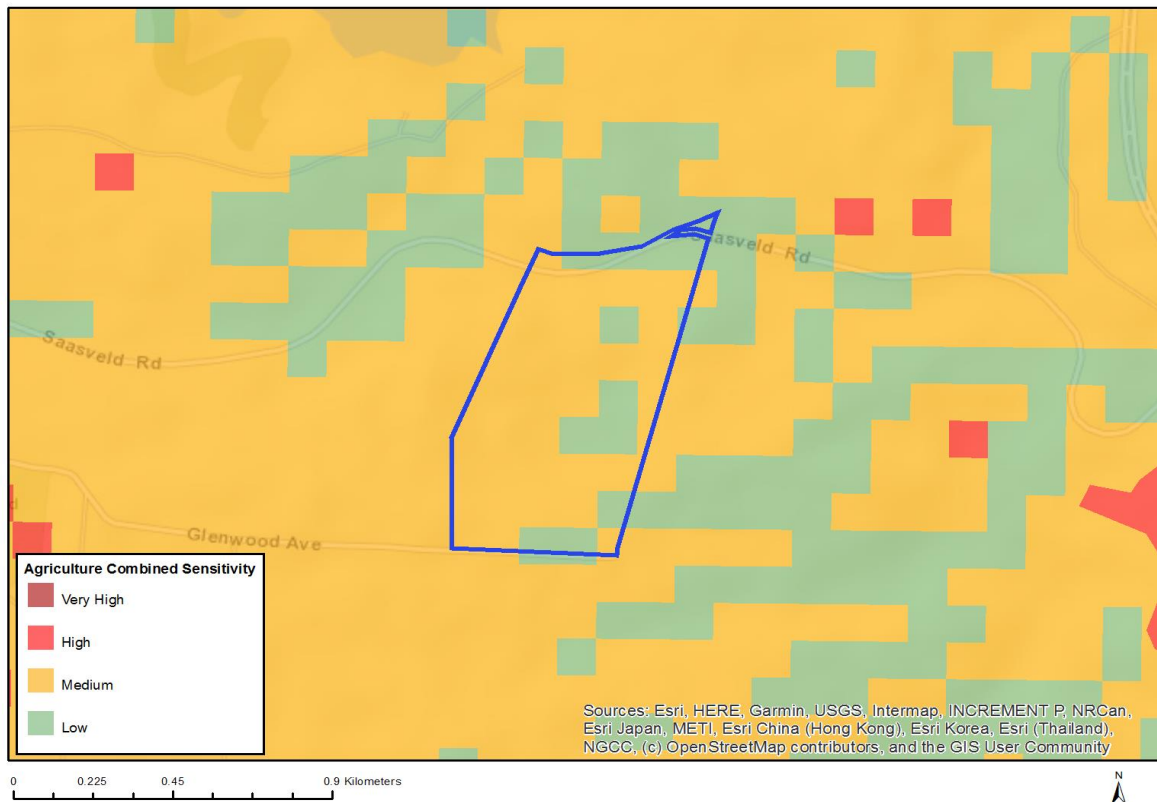
	ent	
7	Socio-Economic Assessment	<a href="https://screening.environment.gov.za/ScreeningDownloads/AssessmentProtocols/DraftGazetted_General_Requirement_Assessment_Protocols.pdf">https://screening.environment.gov.za/ScreeningDownloads/AssessmentProtocols/DraftGazetted_General_Requirement_Assessment_Protocols.pdf</a>
8	Plant Species Assessment	<a href="https://screening.environment.gov.za/ScreeningDownloads/AssessmentProtocols/DraftGazetted_General_Requirement_Assessment_Protocols.pdf">https://screening.environment.gov.za/ScreeningDownloads/AssessmentProtocols/DraftGazetted_General_Requirement_Assessment_Protocols.pdf</a>
9	Animal Species Assessment	<a href="https://screening.environment.gov.za/ScreeningDownloads/AssessmentProtocols/DraftGazetted_General_Requirement_Assessment_Protocols.pdf">https://screening.environment.gov.za/ScreeningDownloads/AssessmentProtocols/DraftGazetted_General_Requirement_Assessment_Protocols.pdf</a>



## Results of the environmental sensitivity of the proposed area.

The following section represents the results of the screening for environmental sensitivity of the proposed site for relevant environmental themes associated with the project classification. It is the duty of the EAP to ensure that the environmental themes provided by the screening tool are comprehensive and complete for the project. Refer to the disclaimer.

### MAP OF RELATIVE AGRICULTURE THEME SENSITIVITY

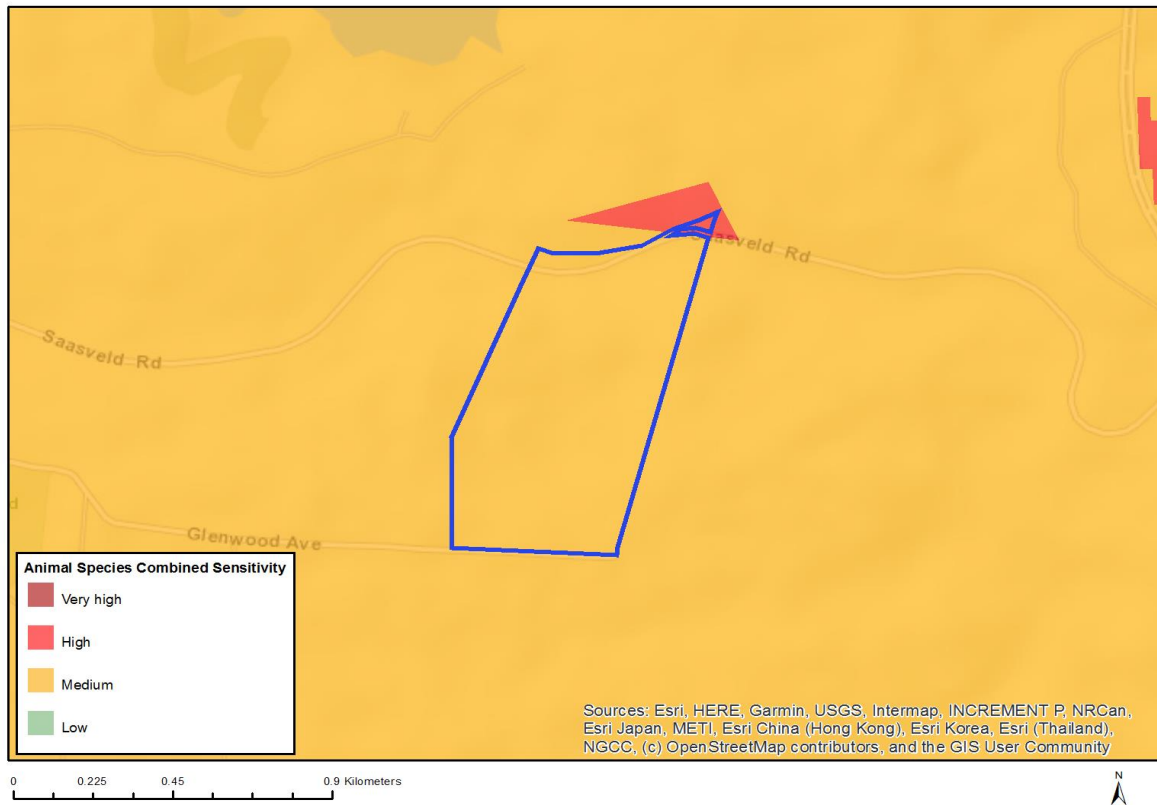


Very High sensitivity	High sensitivity	Medium sensitivity	Low sensitivity
		X	

#### Sensitivity Features:

Sensitivity	Feature(s)
Low	Land capability;01. Very low/02. Very low/03. Low-Very low/04. Low-Very low/05. Low
Medium	Land capability;06. Low-Moderate/07. Low-Moderate/08. Moderate

## MAP OF RELATIVE ANIMAL SPECIES THEME SENSITIVITY

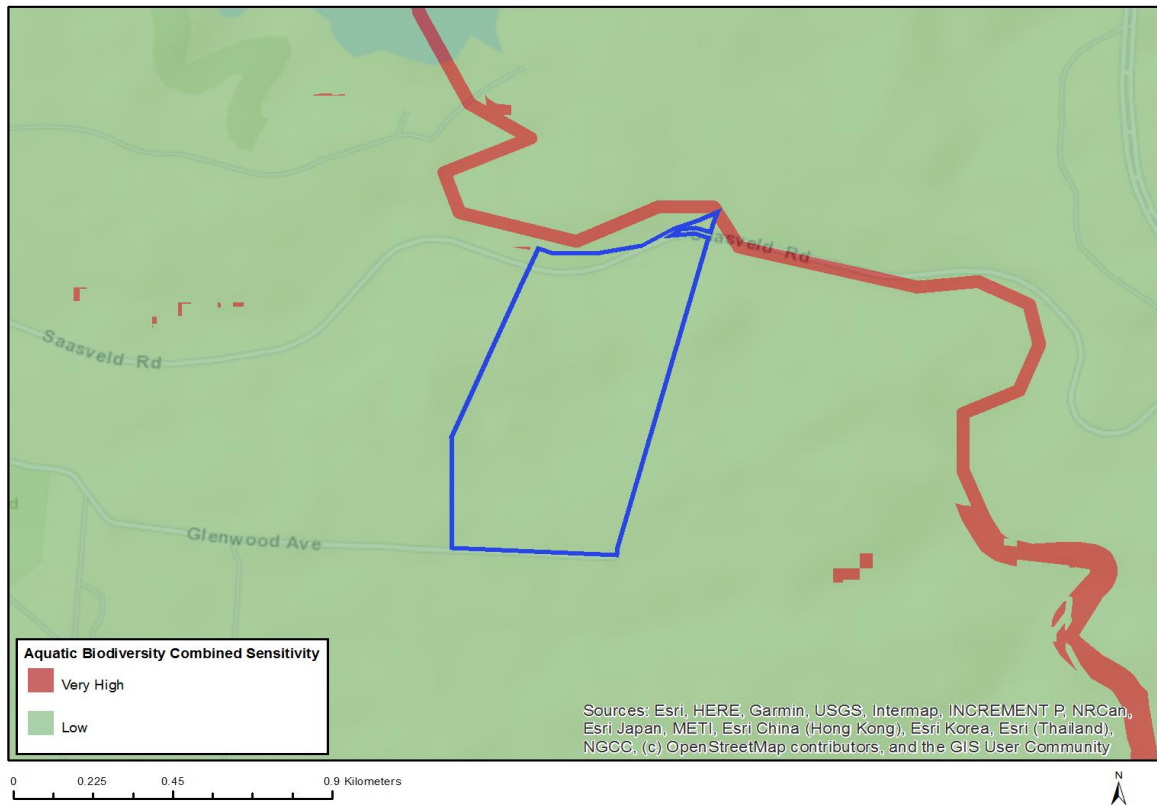


Very High sensitivity	High sensitivity	Medium sensitivity	Low sensitivity
	X		

### Sensitivity Features:

Sensitivity	Feature(s)
High	Aves-Circus maurus
Medium	Amphibia-Afrixalus knysnae
Medium	Reptilia-Tetradactylus fitzsimonsi
Medium	Insecta-Aloeides thyra orientis
Medium	Insecta-Aloeides trimeni southeyae

## MAP OF RELATIVE AQUATIC BIODIVERSITY THEME SENSITIVITY

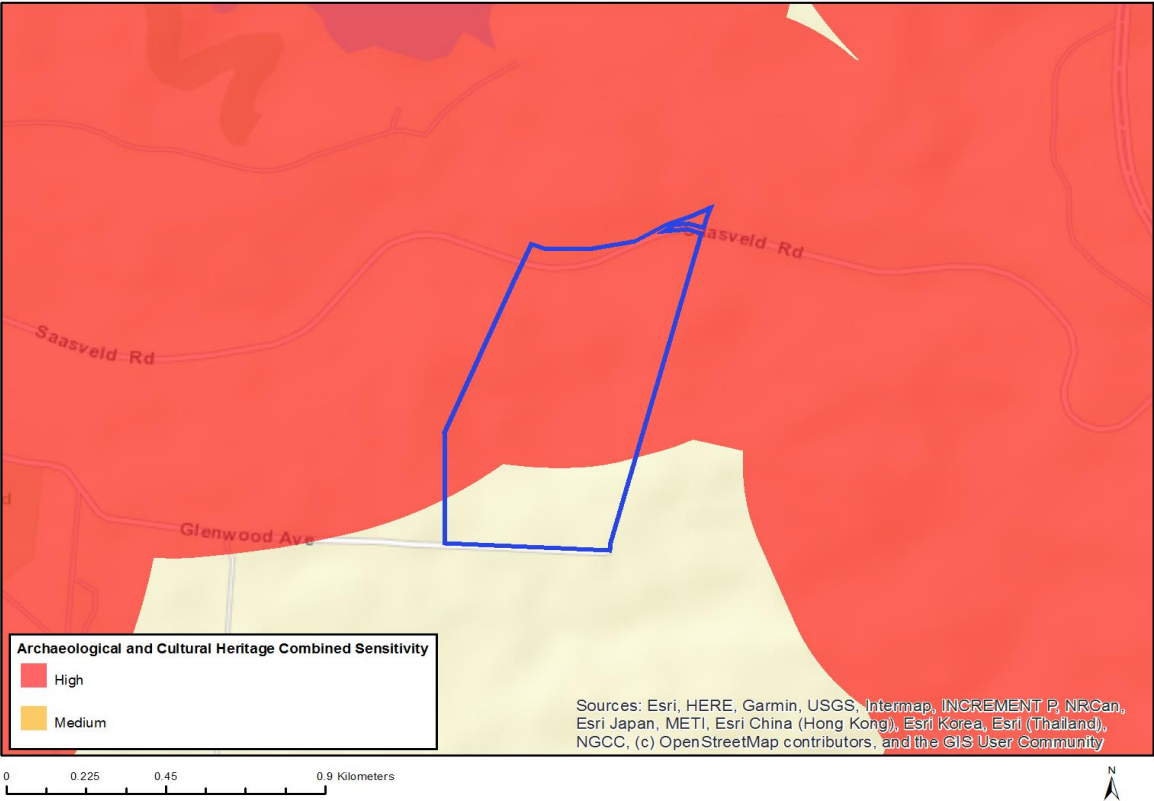


Very High sensitivity	High sensitivity	Medium sensitivity	Low sensitivity
X			

### Sensitivity Features:

Sensitivity	Feature(s)
Low	Low Sensitivity Areas
Very High	CBA,River,Swart

# MAP OF RELATIVE ARCHAEOLOGICAL AND CULTURAL HERITAGE THEME SENSITIVITY

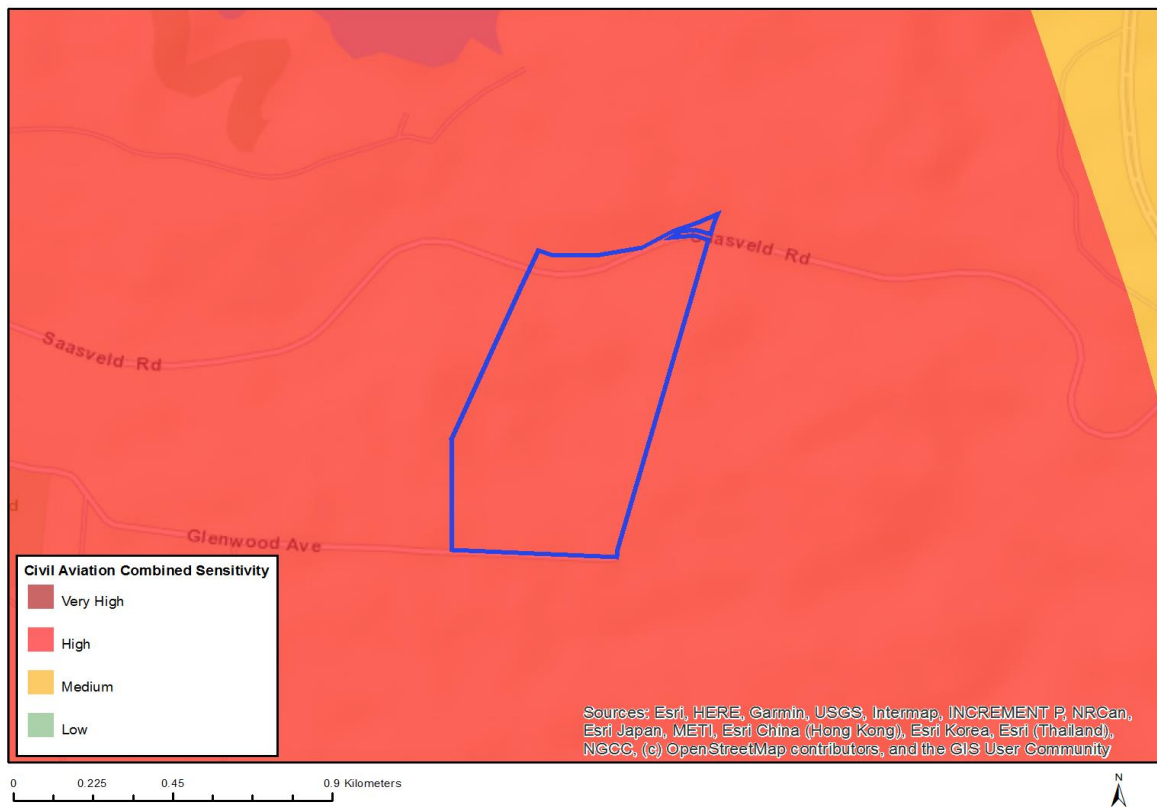


Very High sensitivity	High sensitivity	Medium sensitivity	Low sensitivity
	X		

**Sensitivity Features:**

Sensitivity	Feature(s)
High	Important mountain pass
High	Within 500 m of an important river
High	Within 1 km of a protected area

## MAP OF RELATIVE CIVIL AVIATION THEME SENSITIVITY

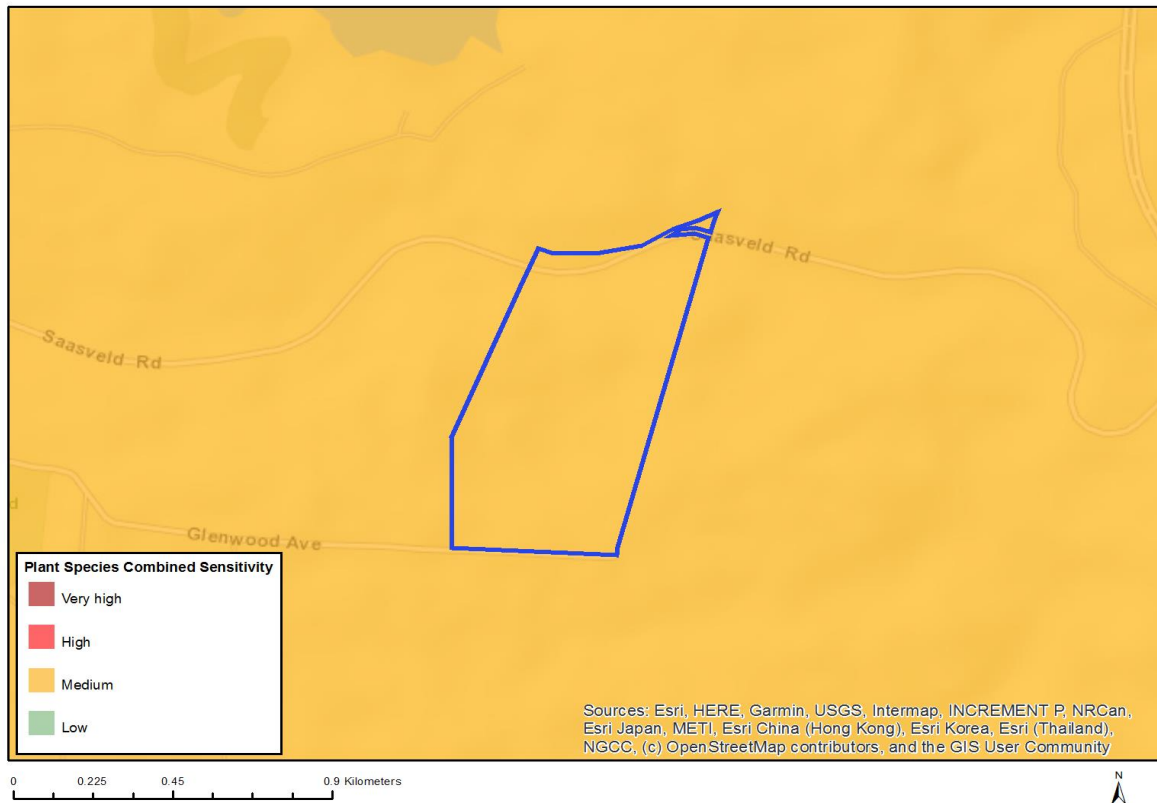


Very High sensitivity	High sensitivity	Medium sensitivity	Low sensitivity
	X		

### Sensitivity Features:

Sensitivity	Feature(s)
High	Within 15 km of a civil aviation radar
High	Between 8 and 15 km from a major civil aviation aerodrome
Medium	Within 5 km of an air traffic control or navigation site

## MAP OF RELATIVE PLANT SPECIES THEME SENSITIVITY



Very High sensitivity	High sensitivity	Medium sensitivity	Low sensitivity
		X	

### Sensitivity Features:

Sensitivity	Feature(s)
Medium	Selago burchellii
Medium	Sensitive species 466
Medium	Sensitive species 443
Medium	Sensitive species 273
Medium	Erica glandulosa subsp. fourcadei
Medium	Erica glumiflora
Medium	Sensitive species 141
Medium	Sensitive species 287
Medium	Sensitive species 715
Medium	Pterygodium cleistogamum
Medium	Diosma passerinoides
Medium	Muraltia knysnaensis
Medium	Leucospermum glabrum
Medium	Lampranthus pauciflorus

MAP OF RELATIVE DEFENCE THEME SENSITIVITY

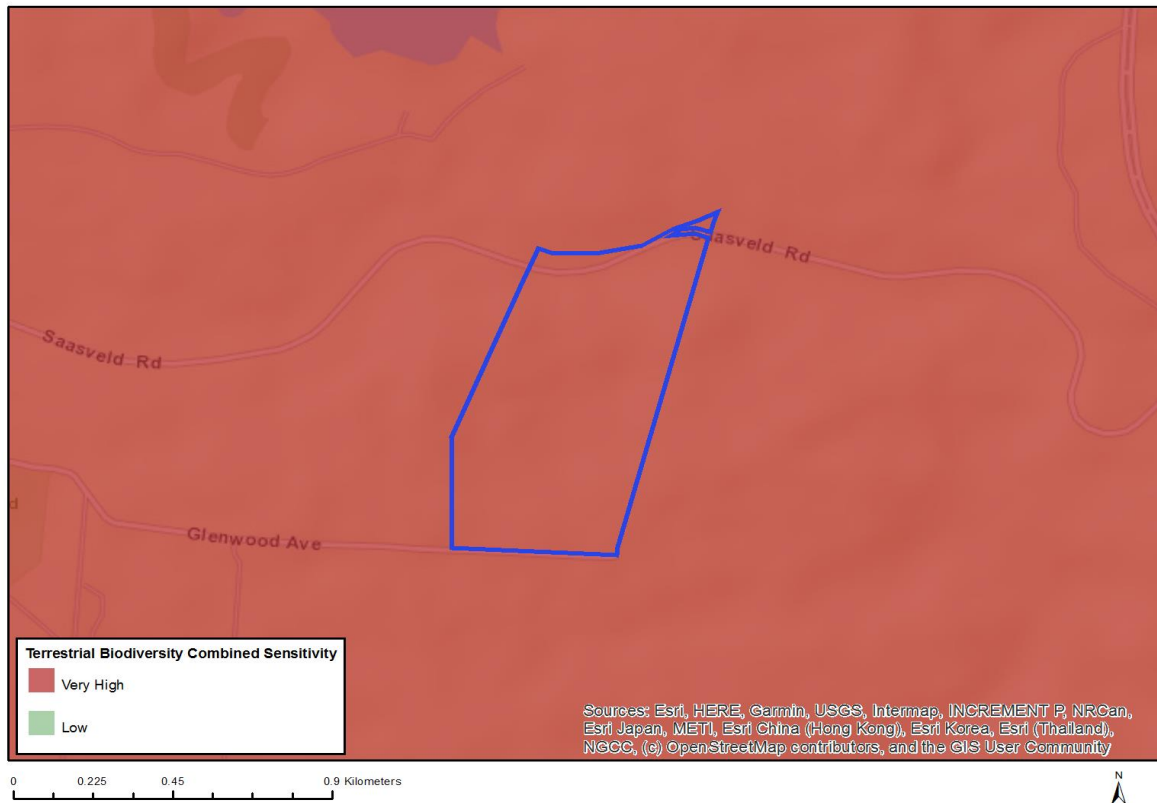


Very High sensitivity	High sensitivity	Medium sensitivity	Low sensitivity
			X

Sensitivity Features:

Sensitivity	Feature(s)
Low	Low sensitivity

## MAP OF RELATIVE TERRESTRIAL BIODIVERSITY THEME SENSITIVITY



Very High sensitivity	High sensitivity	Medium sensitivity	Low sensitivity
X			

### Sensitivity Features:

Sensitivity	Feature(s)
Very High	Vulnerable ecosystem
Very High	Endangered ecosystem
Very High	Forest
Very High	Ecological Support Area 2
Very High	Ecological Support Area 1
Very High	Critical Biodiversity Area 2
Very High	Critical Biodiversity Area 1
Very High	Focus Areas for land-based protected areas expansion
Very High	Strategic Water Source Area