

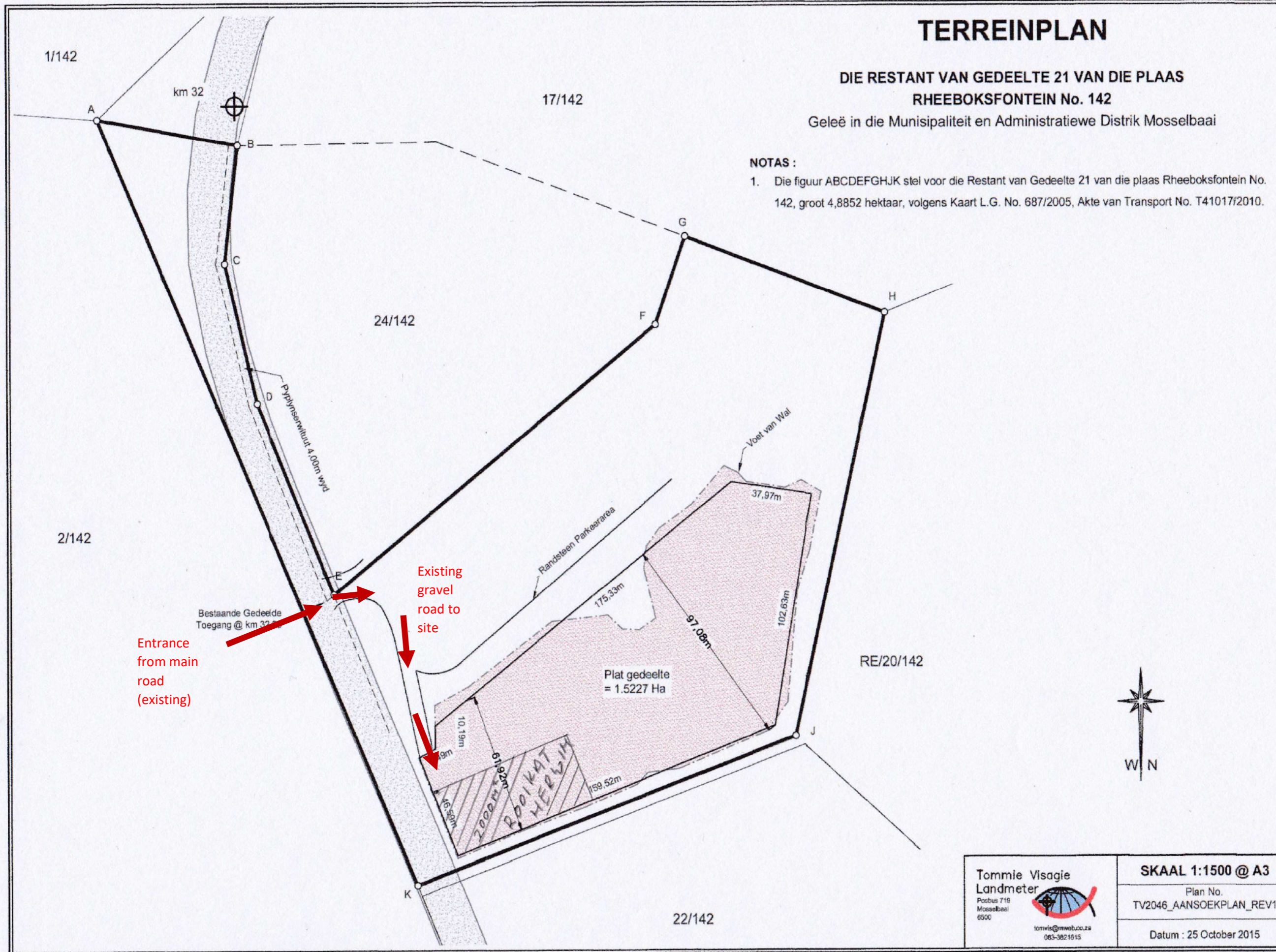
TERREINPLAN

DIE RESTANT VAN GEDEELTE 21 VAN DIE PLAAS RHEEBOKSFONTEIN No. 142

Geleë in die Munisipaliteit en Administratiewe Distrik Mosselbaai

NOTAS :

- Die figuur ABCDEFGHJK stel voor die Restant van Gedeelte 21 van die plaas Rheeboksfontein No. 142, groot 4,8852 hektaar, volgens Kaart L.G. No. 687/2005, Akte van Transport No. T41017/2010.

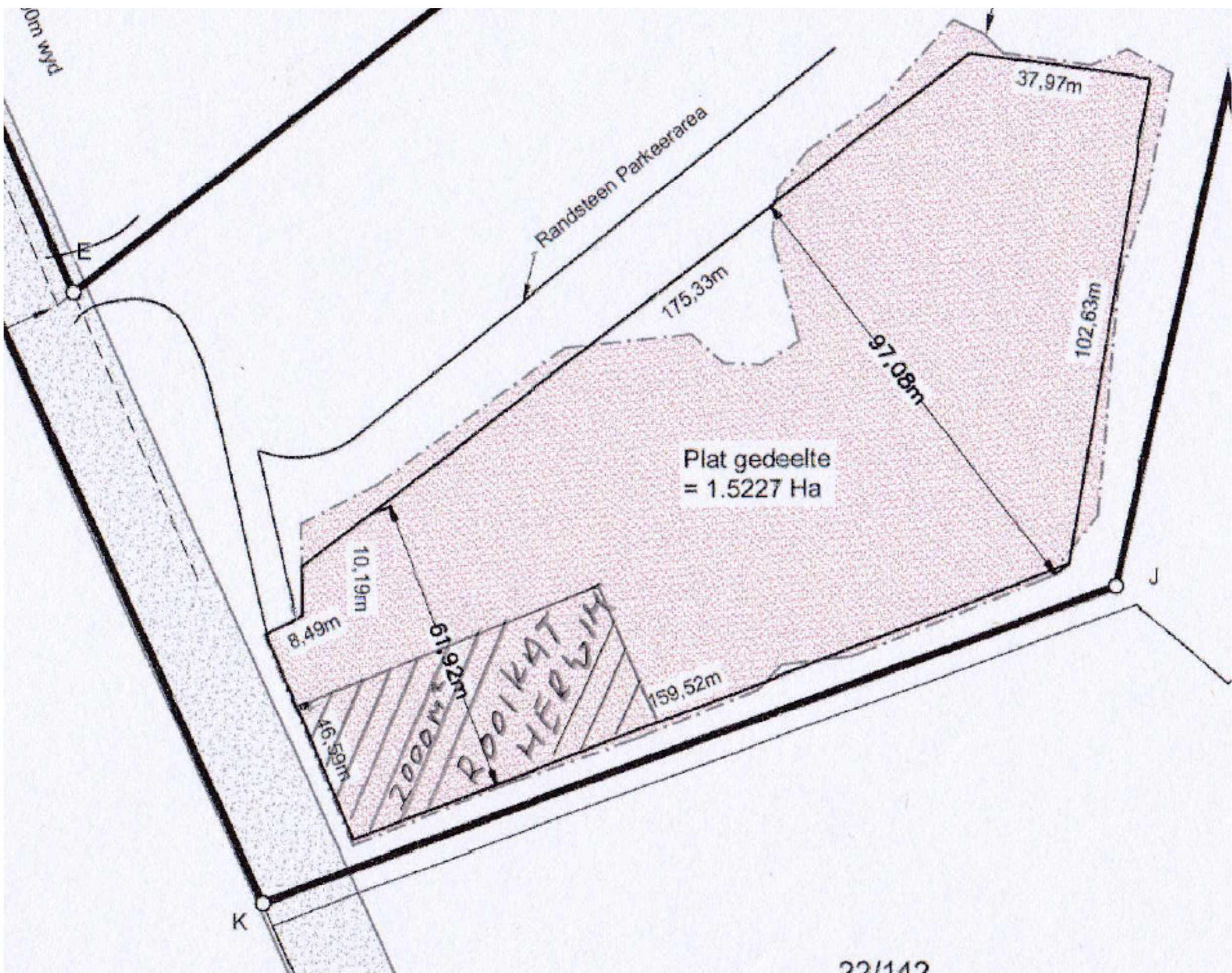


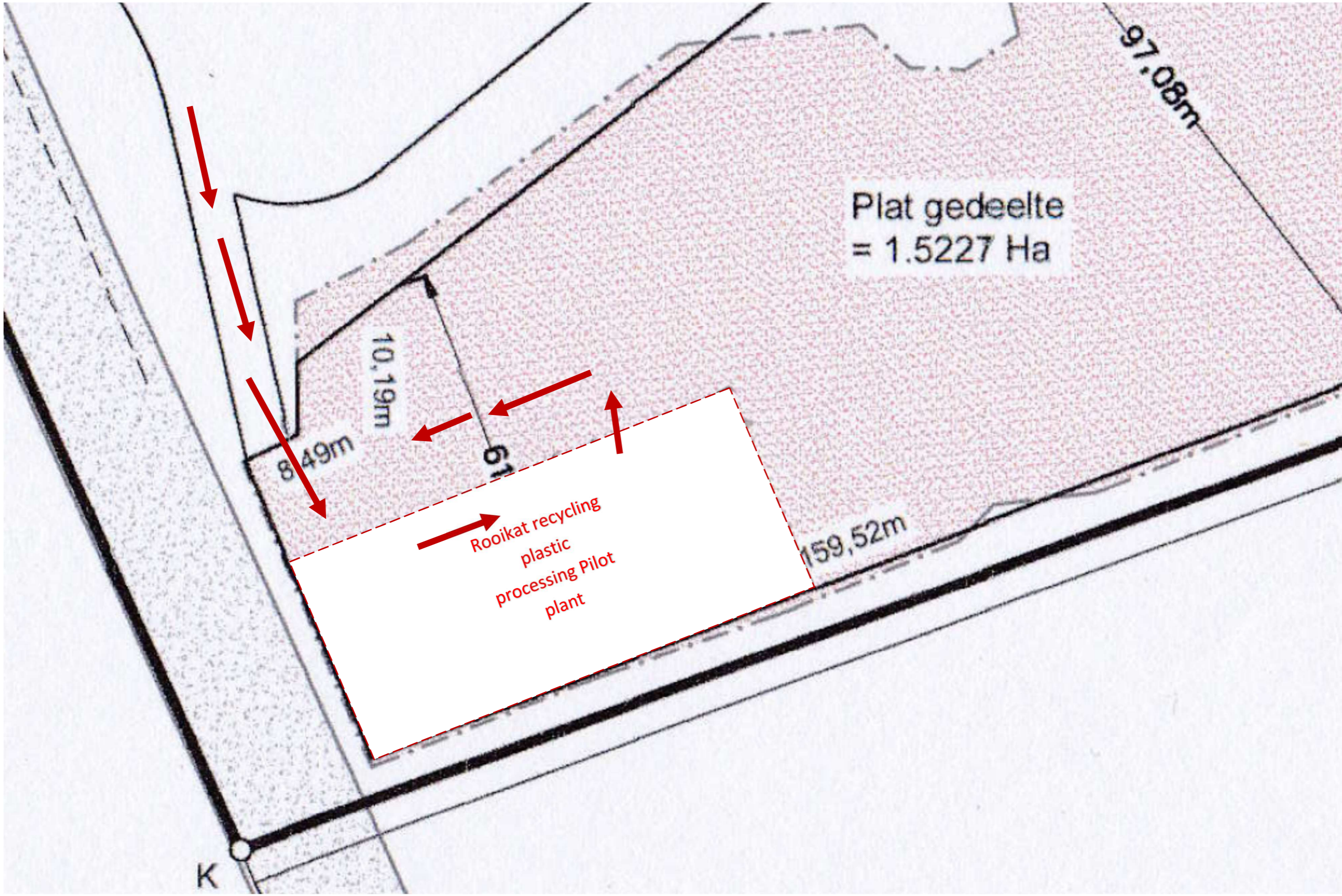
Entrance from main road (existing)

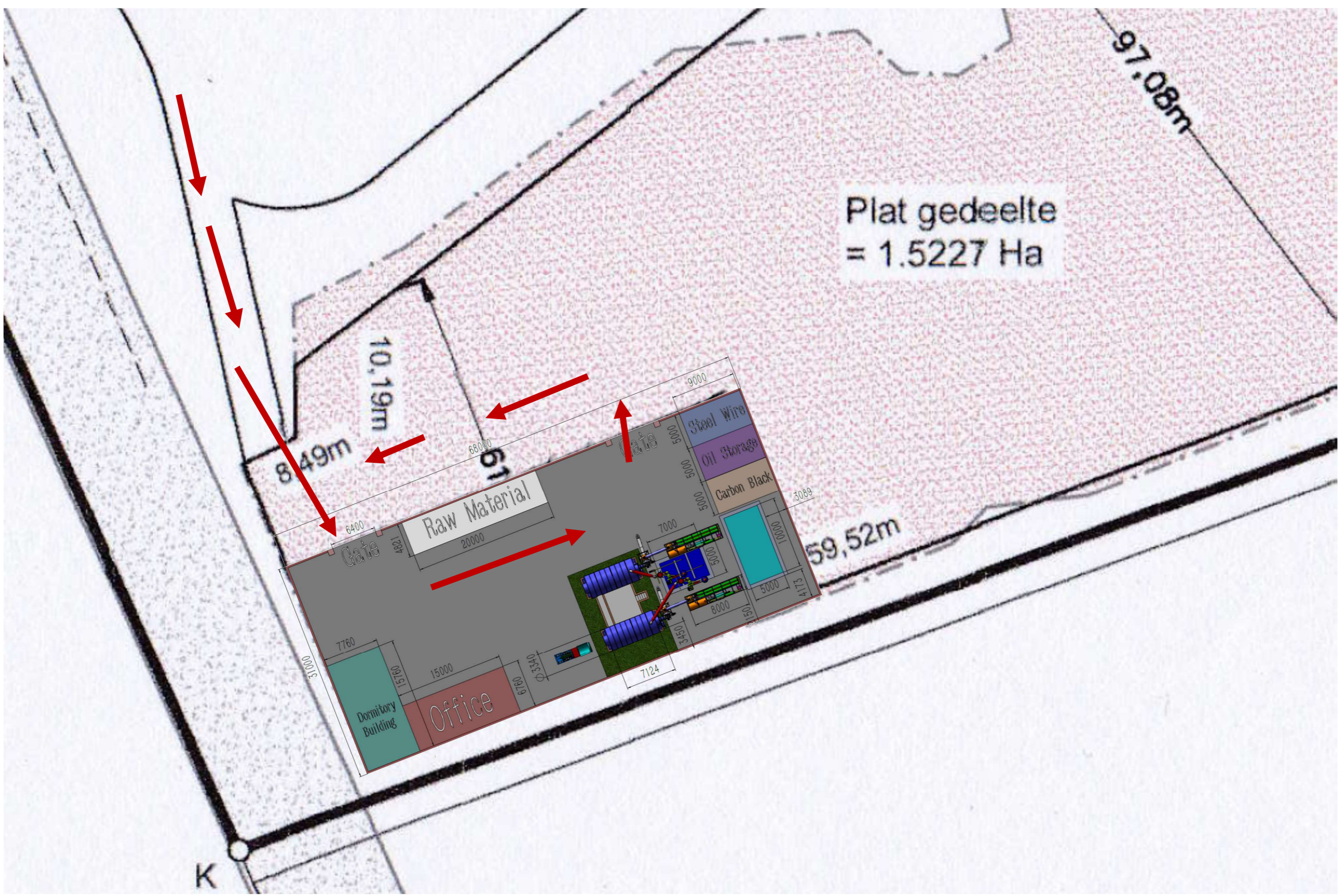
Existing gravel road to site

Tommy Visagie
Landmeter
Postbus 719
Mosselbaai
6500
tomvis@mwet.co.za
083-3821615

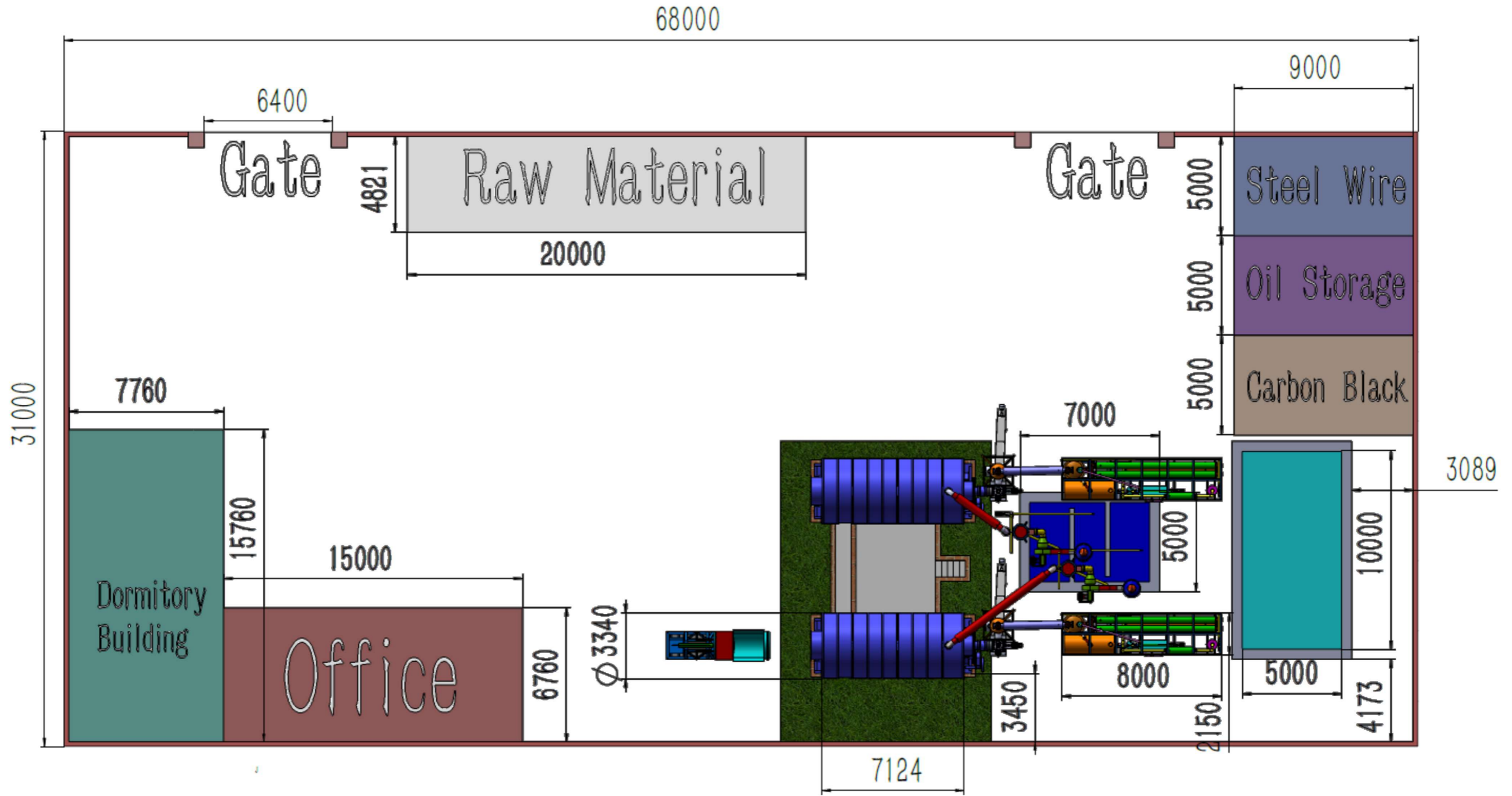
SKAAL 1:1500 @ A3
Plan No.
TV2046_AANSOEKPLAN_REV1
Datum : 25 October 2015







Rooikat Recycling Plastic depolymerization Pilot plant layout



Rooikat Recycling Plastic depolymerization Pilot plant layout

