

Section A

Koo river bridge



Image 1: Riverbed of the Koo River.



Image 2: Koo River Bridge.



Image 3: Riverine vegetation.



Image 4: Riverine vegetation and topography.



Image 5: Dense riverine vegetation.

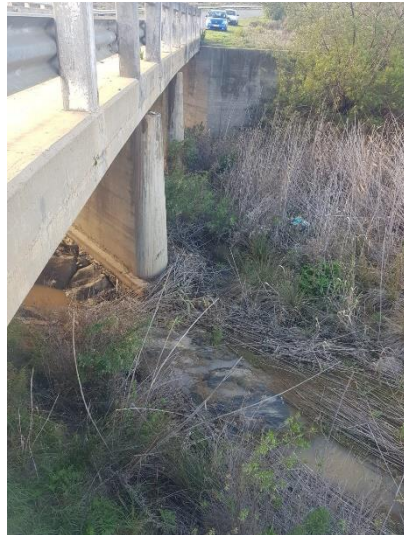


Image 6: Aquatic vegetation within the riverbed.



Image 7: Vegetation adjacent to the watercourse.



Image 8: Disturbed area near the Koo River Bridge.



Image 9: Riverbed of the Koo River.



Image 10: Disturbed and erosion area near the Koo River Bridge.



Image 11: Koo River watercourse riverbed.

Major culvert-C10507



Image 12: Watercourse bed and adjacent vegetation.



Image 13: Silt within the watercourse.



Image 14: Fence line near to Major Culvert C10507.



Image 15: Topography adjacent to the watercourse.



Image 16: Topography adjacent to the watercourse.



Image 17: Large tree within the watercourse.



Image 18: Damaged infrastructure.



Image 19: Disturbed vegetation near the watercourse.

Major Culvert C10508



Image 20: Riverbed of the watercourse.



Image 21: Damaged infrastructure on Major Culvert C10508.



Image 22: Aquatic vegetation present.



Image 23: Vegetation adjacent to the watercourse.



Image 24: Topography adjacent to the watercourse.



Image 25: Watercourse and adjacent riverine vegetation.



Image 26: Disturbed area adjacent to Major Culvert C10508.



Image 27: Image 27: Topography adjacent to Major Culvert C10508.

Major Culvert C10509



Image 28: Watercourse with disturbed adjacent areas.



Image 29: Adjacent farm fence line.



Image 30: Poorly sorted natural material within the riverbed.



Image 31: Watercourse and topography.



Image 32: Watercourse and adjacent riverine vegetation.



Image 33: Vegetation adjacent to the road and topography.

Major Culvert C10510



Image 34: Alien vegetation adjacent to the watercourse.



Image 35: Disturbance adjacent to the carriage way.



Image 36: Rock material adjacent to the watercourse.



Image 37: Watercourse and adjacent farm road.



Image 38: Watercourse with alien vegetation.



Image 39: Watercourse and adjacent topography.

Major Culvert C10512



Image 40: Watercourse and adjacent riverine vegetation.



Image 41: Watercourse riverbed of the watercourse.



Image 42: Adjacent riverine vegetation.

Keisie River Bridge 3065



Image 43: Watercourse and dense riverine vegetation.



Image 44: Footpath adjacent to the Keisie River.



Image 45: Footpath adjacent to the Keisie River.



Image 46: Keisie River watercourse.



Image 47: Adjacent vegetation and steep gradient.



Image 48: Keisie River Bridge.



Image 49: Keisie River riverbed.



Image 50: Piping infrastructure on the Keisie River Bridge.



Image 51: Steep gradient adjacent to watercourse.

Section B

Keisie River Bridge 5581



Image 52: keisie River Bridge - 5581.



Image 53: Adjacent Fynbos vegetation,



Image 54: Riverbed of the Keisie River.



Image 55: Vegetation within the Watercourse.



Image 56: Adjacent topography of the Riverine habitat.



Image 57: Rock material within the Keisie River watercourse.



Image 58: Adjacent riverine vegetation.



Image 59: Aquatic vegetation within the watercourse.



Image 60: Erosion underneath infrastructure.



Image 61: Evidence of Fauna on site.

Section C

Kingna River Bridge



Image 62: Farm fence line adjacent to bridge.



Image 63: Dense aquatic vegetation.



Image 64: Disturbed area adjacent to the bridge.



Image 65: Dense vegetation and fence line.



Image 66: Side access road adjacent to bridge.



Image 67: Piping infrastructure.

Major Culvert on TR313 - 8.61km



Image 68: Riverbed and adjacent riverine vegetation.



Image 69: Metal gate within flow path.



Image 70: Flow path and adjacent riverine vegetation.



Image 71: Adjacent dense vegetation.



Image 72: TR313 and topography on the side of the carriage way (eastern side).

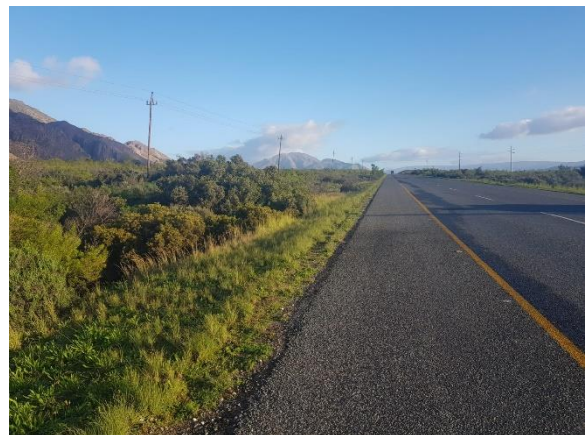


Image 73: TR313 and topography on the side of the carriage way (western side).



Image 74: Dense vegetation adjacent to the watercourse.

Major Culvert C10615



Image 75: Major Culvert C10615 and fence line.

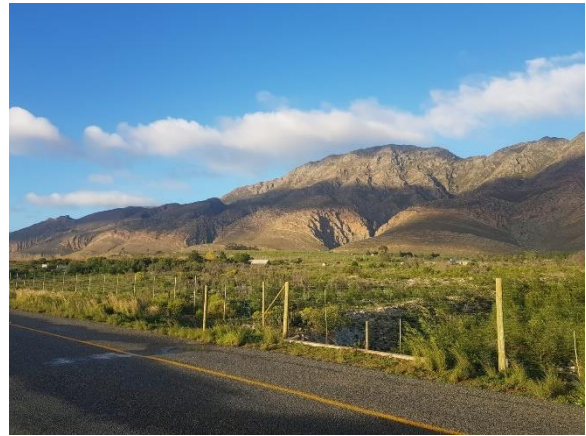


Image 76: Major Culvert C10615 and adjacent vegetation.



Image 77: Major Culvert C10615 flow path.



Image 78: Major Culvert C10615 flow path well sorted.



Image 79: Major Culvert C10615 flow path.



Image 80: Adjacent topography.



Image 81: Adjacent vegetation.



Image 82: Major Culvert C10615 flow path and adjacent topography.

Major Culvert C10616



Image 83: Adjacent steep topography.



Image 84: Adjacent inlet to watercourse.



Image 85: Adjacent vegetation.



Image 86: Eastern flow path.



Image 87: Western flow path and steep gradient.



Image 88: Topography adjacent to TR31/3.

Major Culvert C10617



Image 89: Adjacent riverine vegetation.



Image 90: Eastern flow path and aquatic vegetation.



Image 91: Eastern flow path and aquatic vegetation.



Image 92: Topography adjacent to TR31/3



Image 93: Topography adjacent to the Culvert.



Image 94: Eastern flow path and aquatic vegetation.



Image 95: Vegetation adjacent to the watercourse.



Image 96: Eastern flow path and aquatic vegetation.

Major Culvert C10148



Image 97: Western flow path.



Image 98: Side drain.



Image 99: Disturbed area adjacent to the watercourse.



Image 100: Western flow path and aquatic vegetation.



Image 101: Disturbed path to be utilized as a working corridor.



Image 102: Disturbed path adjacent to watercourse.



Image 103: Eastern flow path.



Image 104: Adjacent aquatic vegetation.

Major Culvert C10167



Image 105: Adjacent riverine vegetation.



Image 106: Adjacent topography with steep gradient.



Image 107: Western flow path.



Image 108: Flow path and dense aquatic vegetation.



Image 109: Large Acacia adjacent to the watercourse.



Image 110: Adjacent riverine vegetation.



Image 111: Adjacent riverine vegetation.

Section D

Riet River Bridge



Image 112: Western flow path.



Image 113: Piping infrastructure within the watercourse.



Image 114: Acacia adjacent to Tr31/3.



Image 115: Eastern flow path and aquatic vegetation.

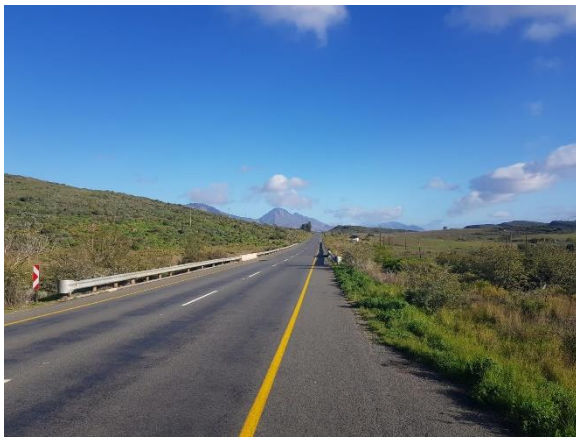


Image 116: TR31/3 and adjacent topography.



Image 117: Adjacent topography with a steep gradient.



Image 118: Piping infrastructure within flow path.



Image 119: TR31/3 and adjacent topography.

Major Culvert C10618



Image 120: Adjacent riverine vegetation.



Image 121: Side access road.



Image 122: Topography adjacent to TR31/3 with a steep gradient.



Image 123: Side access road.



Image 124: Eastern flow path.

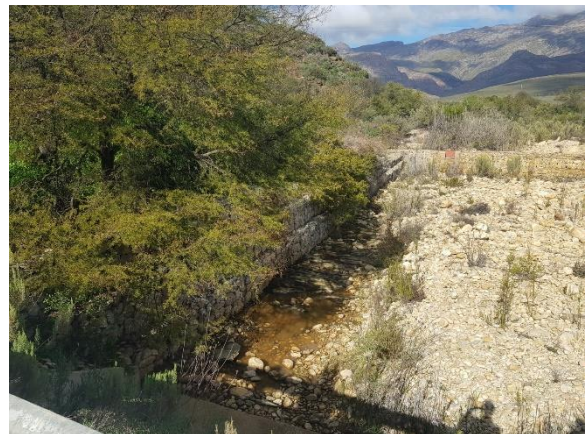


Image 125: Adjacent riverine vegetation and gabions.



Image 126: Adjacent riverine vegetation and gabions.



Image 127: Eastern flow path and adjacent vegetation.



Image 128: Well sorted riverbed of the eastern flow path.



Image 129: Adjacent riverine vegetation.



Image 130: Adjacent riverine vegetation.

Major Culvert C10619



Image 131: Eastern flow path and adjacent vegetation.



Image 132: Adjacent topography showing a steep gradient.



Image 133: Adjacent riverine vegetation.



Image 134: Adjacent topography showing a steep gradient.



Image 135: Dense vegetation adjacent to the watercourse.

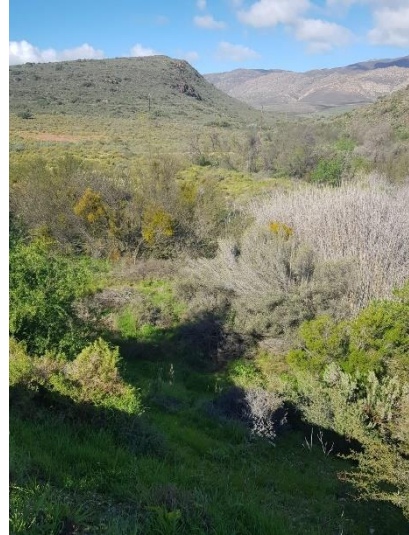


Image 136: Adjacent vegetation.

Kruispad River Bridge



Image 137: Eastern flow path.



Image 138: Adjacent topography showing a steep gradient.



Image 139: Riverbed of the watercourse.



Image 140: Adjacent topography showing a steep gradient.



Image 141: Adjacent riverine vegetation.



Image 142: Nearby agricultural activities.



Image 143: Nearby agricultural activities.



Image 144: Western flow path.



Image 145: Adjacent topography showing a steep gradient.

Scheeperrus River Bridge



Image 146: Adjacent topography.



Image 147: Bed rock exposed within riverbed.



Image 148: Eastern flow path.



Image 149: Concrete pillar within flow path.



Image 150: Flow path and adjacent riverine vegetation.



Image 151: Eastern flow path and aquatic vegetation.