

**SCREENING REPORT FOR AN ENVIRONMENTAL AUTHORIZATION AS
REQUIRED BY THE 2014 EIA REGULATIONS – PROPOSED DEVELOPMENT
FOOTPRINT ENVIRONMENTAL SENSITIVITY**

EIA Reference number: 14/1/1/E1/5/6/3/0715/21

Project name: ALLEGED UNLAWFUL COMMENCEMENT OF CONSTRUCTION OF FUEL STORAGE STRUCTURES ON PTN 64 OF FARM NO 22, KLEIN DASSENBERG, PHILADELPHIA, CITY OF CAPE TOWN METROPOLITAN MUNICIPALITY

Project title: ALLEGED UNLAWFUL COMMENCEMENT OF CONSTRUCTION OF FUEL STORAGE STRUCTURES ON PTN 64 OF FARM NO 22, KLEIN DASSENBERG, PHILADELPHIA, CITY OF CAPE TOWN METROPOLITAN MUNICIPALITY

Date screening report generated: 23/03/2023 12:01:22

Applicant: A. Sedick

Compiler: SES_AS

Compiler signature:
.....

Application Category: Infrastructure | Localised infrastructure | Storage | Dangerous Goods | Hydrocarbon | Petroleum

OFFICIAL

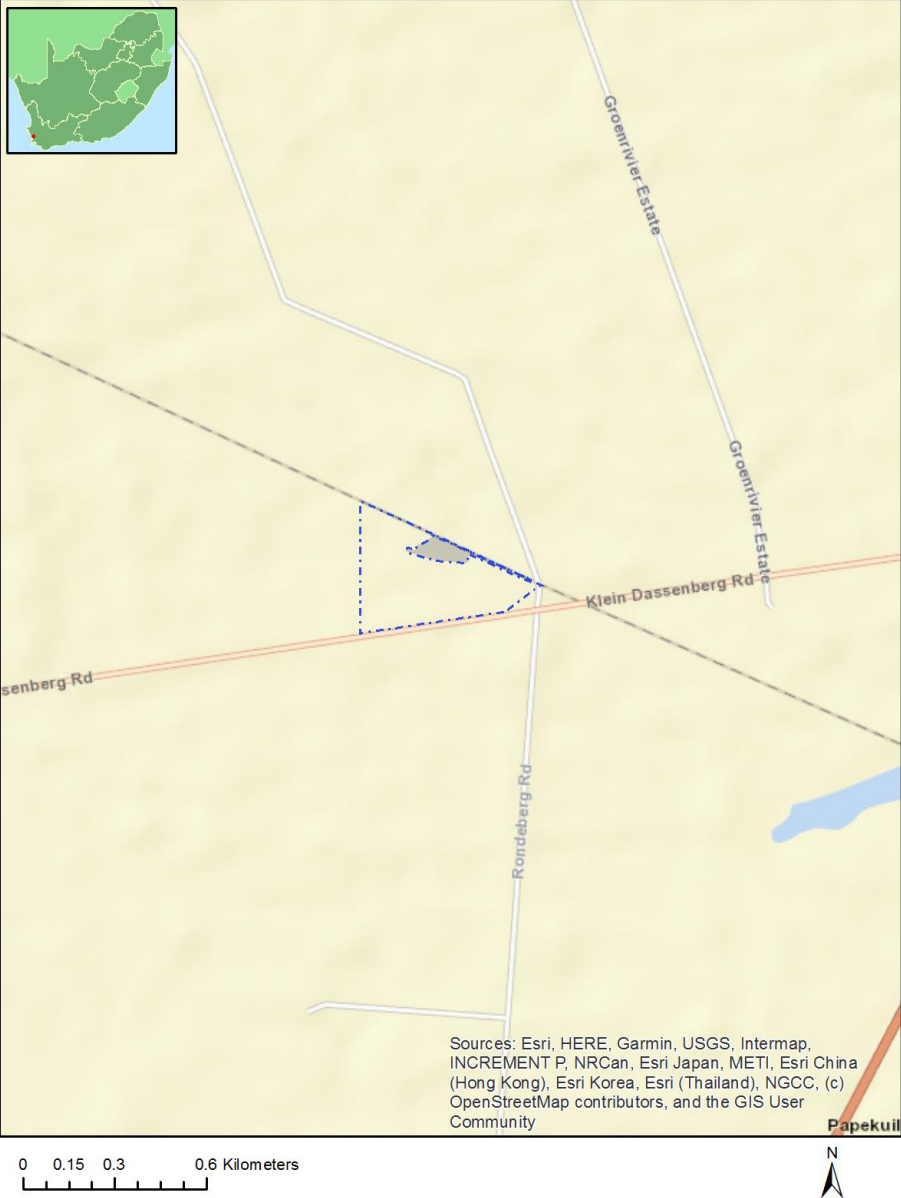
Table of Contents

- Proposed Project Location 4
 - Orientation map 1: General location 4
- Map of proposed site and relevant area(s) 5
 - Cadastral details of the proposed site 5
 - Wind and Solar developments with an approved Environmental Authorisation or applications under consideration within 30 km of the proposed area 6
 - Environmental Management Frameworks relevant to the application 6
- Environmental screening results and assessment outcomes 6
 - Relevant development incentives, restrictions, exclusions or prohibitions 6
 - Proposed Development Area Environmental Sensitivity 7
 - Specialist assessments identified 7
- Results of the environmental sensitivity of the proposed area 9
 - MAP OF RELATIVE AGRICULTURE THEME SENSITIVITY 9
 - MAP OF RELATIVE ANIMAL SPECIES THEME SENSITIVITY 10
 - MAP OF RELATIVE AQUATIC BIODIVERSITY THEME SENSITIVITY 11
 - MAP OF RELATIVE ARCHAEOLOGICAL AND CULTURAL HERITAGE THEME SENSITIVITY 12
 - MAP OF RELATIVE CIVIL AVIATION THEME SENSITIVITY 13
 - MAP OF RELATIVE DEFENCE THEME SENSITIVITY 14
 - MAP OF RELATIVE PALEONTOLOGY THEME SENSITIVITY 15
 - MAP OF RELATIVE PLANT SPECIES THEME SENSITIVITY 16
 - MAP OF RELATIVE TERRESTRIAL BIODIVERSITY THEME SENSITIVITY 19

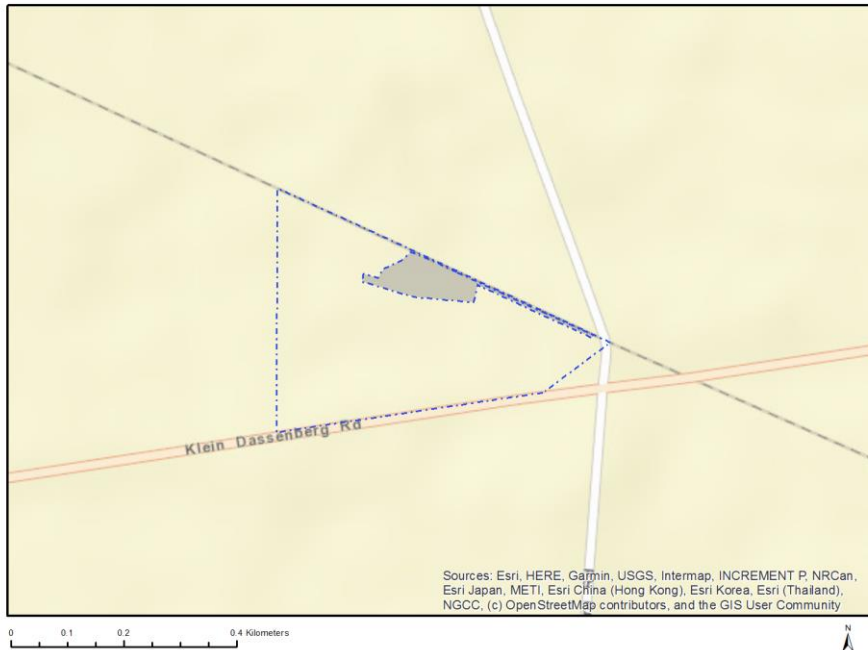
Proposed Project Location

Orientation map 1: General location

General Orientation: ALLEGED UNLAWFUL COMMENCEMENT OF CONSTRUCTION OF FUEL STORAGE STRUCTURES ON PTN 64 OF FARM NO 22, KLEIN DASSENBERG, PHILADELPHIA, CITY OF CAPE TOWN METROPOLITAN MUNICIPALITY



Map of proposed site and relevant area(s)



Cadastral details of the proposed site

Property details:

No	Farm Name	Farm/ Erf No	Portion	Latitude	Longitude	Property Type
1	ZOUTERIVIER	22	0	33°36'29.37S	18°34'10.71E	Farm
2	ZOUTERIVIER	22	64	33°34'53.17S	18°35'31.09E	Farm Portion

Development footprint¹ vertices:

Footprint	Latitude	Longitude
1	33°34'51.62S	18°35'32E
1	33°34'50.88S	18°35'28.99E
1	33°34'50.74S	18°35'29.03E
1	33°34'50.7S	18°35'29.05E
1	33°34'50.6S	18°35'29.06E
1	33°34'50.51S	18°35'29.1E
1	33°34'50.71S	18°35'29.91E
1	33°34'50.27S	18°35'30.23E
1	33°34'49.9S	18°35'31.24E
1	33°34'49.46S	18°35'31.77E
1	33°34'49.61S	18°35'32.23E
1	33°34'50.01S	18°35'33.26E
1	33°34'50.46S	18°35'34.46E
1	33°34'51.98S	18°35'38.37E

¹ “development footprint”, means the area within the site on which the development will take place and includes all ancillary developments for example roads, power lines, boundary walls, paving etc. which require vegetation clearance or which will be disturbed and for which the application has been submitted.

1	33°34'53.46S	18°35'42.26E
1	33°34'53.58S	18°35'42.18E
1	33°34'51.04S	18°35'35.63E
1	33°34'51.87S	18°35'35.4E
1	33°34'51.62S	18°35'32E

Wind and Solar developments with an approved Environmental Authorisation or applications under consideration within 30 km of the proposed area

No	EIA Reference No	Classification	Status of application	Distance from proposed area (km)
1	12/12/20/2109	Solar PV	Approved	1.8
2	12/12/20/2384	Solar PV	Approved	11.7
3	12/12/20/2393	Solar PV	Approved	29.2

Environmental Management Frameworks relevant to the application

No intersections with EMF areas found.

Environmental screening results and assessment outcomes

The following sections contain a summary of any development incentives, restrictions, exclusions or prohibitions that apply to the proposed development footprint as well as the most environmental sensitive features on the footprint based on the footprint sensitivity screening results for the application classification that was selected. The application classification selected for this report is:

Infrastructure | Localised infrastructure | Storage | Dangerous Goods | Hydrocarbon | Petroleum.

Relevant development incentives, restrictions, exclusions or prohibitions

The following development incentives, restrictions, exclusions or prohibitions and their implications that apply to this footprint are indicated below.

Incentive, restriction or prohibition	Implication
Strategic Transmission Corridor-Central corridor	https://screening.environment.gov.za/ScreeningDownloads/DevelopmentZones/Combined_EGI.pdf
Strategic Gas Pipeline Corridors-Phase 1a & 1b: Saldanha to Ankerlig and Saldanha to Mossel Bay	https://screening.environment.gov.za/ScreeningDownloads/DevelopmentZones/Combined_GAS.pdf
South African Conservation Areas	https://screening.environment.gov.za/ScreeningDownloads/DevelopmentZones/SACAD_OR_2022_Q3_Metadata.pdf

Proposed Development Area Environmental Sensitivity

The following summary of the development footprint environmental sensitivities is identified. Only the highest environmental sensitivity is indicated. The footprint environmental sensitivities for the proposed development footprint as identified, are indicative only and must be verified on site by a suitably qualified person before the specialist assessments identified below can be confirmed.

Theme	Very High sensitivity	High sensitivity	Medium sensitivity	Low sensitivity
Agriculture Theme			X	
Animal Species Theme		X		
Aquatic Biodiversity Theme				X
Archaeological and Cultural Heritage Theme				X
Civil Aviation Theme		X		
Defence Theme				X
Paleontology Theme				X
Plant Species Theme			X	
Terrestrial Biodiversity Theme	X			

Specialist assessments identified

Based on the selected classification, and the known impacts associated with the proposed development, the following list of specialist assessments have been identified for inclusion in the assessment report. It is the responsibility of the EAP to confirm this list and to motivate in the assessment report, the reason for not including any of the identified specialist study including the provision of photographic evidence of the footprint situation.

No	Specialist assessment	Assessment Protocol
1	Agricultural Impact Assessment	https://screening.environment.gov.za/ScreeningDownloads/AssessmentProtocols/Gazetted_General_Agriculture_Assessment_Protocols.pdf
2	Archaeological and Cultural Heritage Impact Assessment	https://screening.environment.gov.za/ScreeningDownloads/AssessmentProtocols/Gazetted_General_Requirement_Assessment_Protocols.pdf
3	Palaeontology Impact Assessment	https://screening.environment.gov.za/ScreeningDownloads/AssessmentProtocols/Gazetted_General_Requirement_Assessment_Protocols.pdf
4	Terrestrial Biodiversity Impact Assessment	https://screening.environment.gov.za/ScreeningDownloads/AssessmentProtocols/Gazetted_Terrestrial_Biodiversity_Assessment_Protocols.pdf
5	Aquatic Biodiversity Impact Assessment	https://screening.environment.gov.za/ScreeningDownloads/AssessmentProtocols/Gazetted_Aquatic_Biodiversity_Assessment_Protocols.pdf
6	Hydrology Assessment	https://screening.environment.gov.za/ScreeningDownloads/AssessmentProtocols/Gazetted_General_Requirement_Assessment_Protocols.pdf
7	Noise Impact Assessment	https://screening.environment.gov.za/ScreeningDownloads/AssessmentProtocols/Gazetted_Noise_Impacts_Assessment_Protocol.pdf
8	Traffic Impact	https://screening.environment.gov.za/ScreeningDownloads/AssessmentProtocols/Gazetted_Traffic_Impact_Assessment_Protocol.pdf

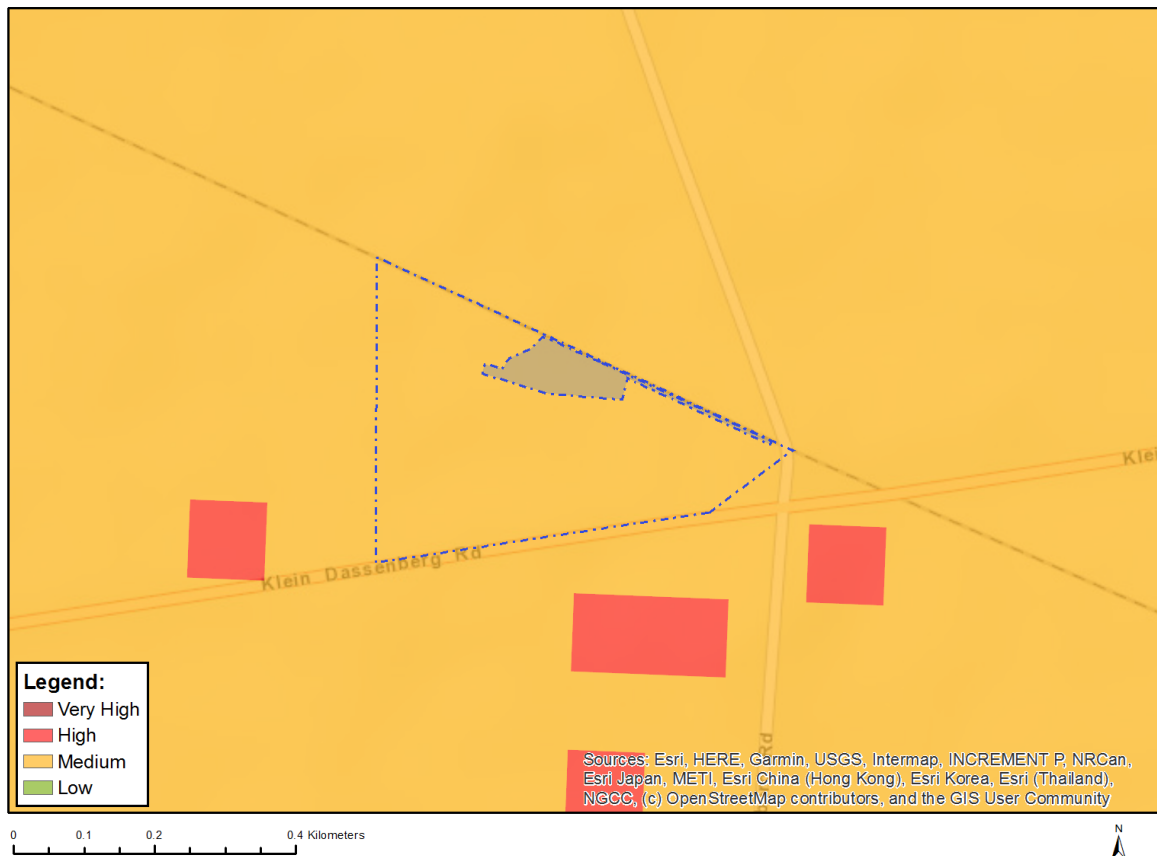
	Assessment	ssmentProtocols/Gazetted_General_Requirement_Assessment_Protocols.pdf
9	Geotechnical Assessment	https://screening.environment.gov.za/ScreeningDownloads/AssessmentProtocols/Gazetted_General_Requirement_Assessment_Protocols.pdf
10	Socio-Economic Assessment	https://screening.environment.gov.za/ScreeningDownloads/AssessmentProtocols/Gazetted_General_Requirement_Assessment_Protocols.pdf
11	Plant Species Assessment	https://screening.environment.gov.za/ScreeningDownloads/AssessmentProtocols/Gazetted_Plant_Species_Assessment_Protocols.pdf
12	Animal Species Assessment	https://screening.environment.gov.za/ScreeningDownloads/AssessmentProtocols/Gazetted_Animal_Species_Assessment_Protocols.pdf

OFFICIAL

Results of the environmental sensitivity of the proposed area.

The following section represents the results of the screening for environmental sensitivity of the proposed footprint for relevant environmental themes associated with the project classification. It is the duty of the EAP to ensure that the environmental themes provided by the screening tool are comprehensive and complete for the project. Refer to the disclaimer.

MAP OF RELATIVE AGRICULTURE THEME SENSITIVITY

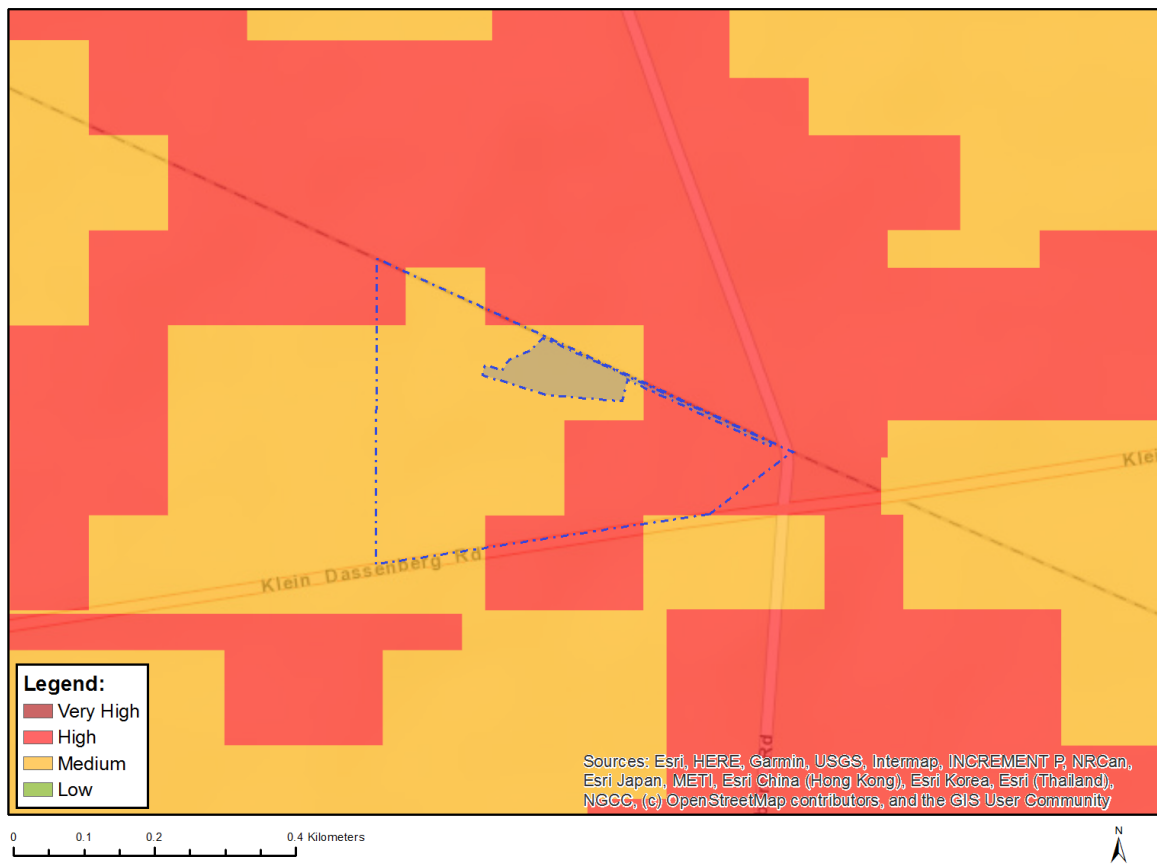


Very High sensitivity	High sensitivity	Medium sensitivity	Low sensitivity
		X	

Sensitivity Features:

Sensitivity	Feature(s)
Medium	Land capability;06. Low-Moderate/07. Low-Moderate/08. Moderate

MAP OF RELATIVE ANIMAL SPECIES THEME SENSITIVITY



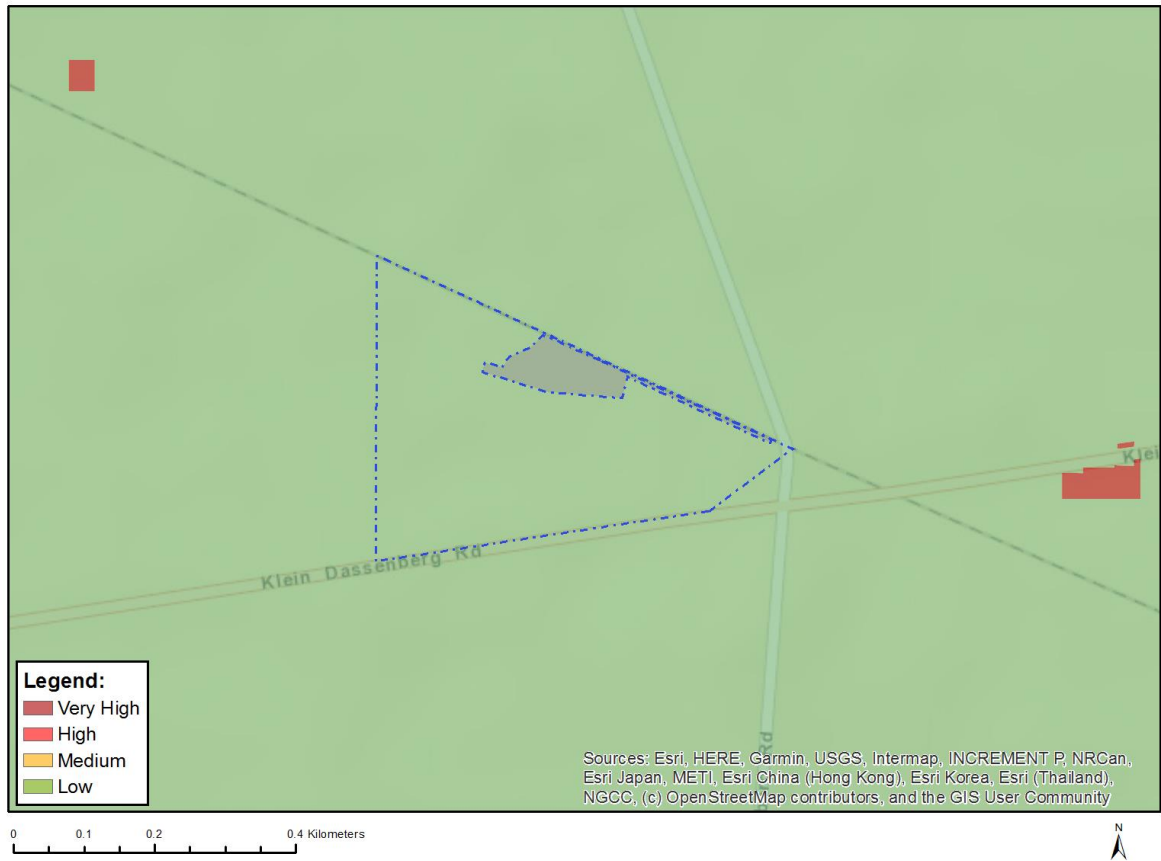
Where only a sensitive plant unique number or sensitive animal unique number is provided in the screening report and an assessment is required, the environmental assessment practitioner (EAP) or specialist is required to email SANBI at eiadatarequests@sanbi.org.za listing all sensitive species with their unique identifiers for which information is required. The name has been withheld as the species may be prone to illegal harvesting and must be protected. SANBI will release the actual species name after the details of the EAP or specialist have been documented.

Very High sensitivity	High sensitivity	Medium sensitivity	Low sensitivity
	X		

Sensitivity Features:

Sensitivity	Feature(s)
High	Aves-Circus ranivorus
High	Aves-Circus maurus
Medium	Aves-Afrotis afra
Medium	Insecta-Aloeides egerides
Medium	Invertebrate-Pachysoma aesculapius

MAP OF RELATIVE AQUATIC BIODIVERSITY THEME SENSITIVITY

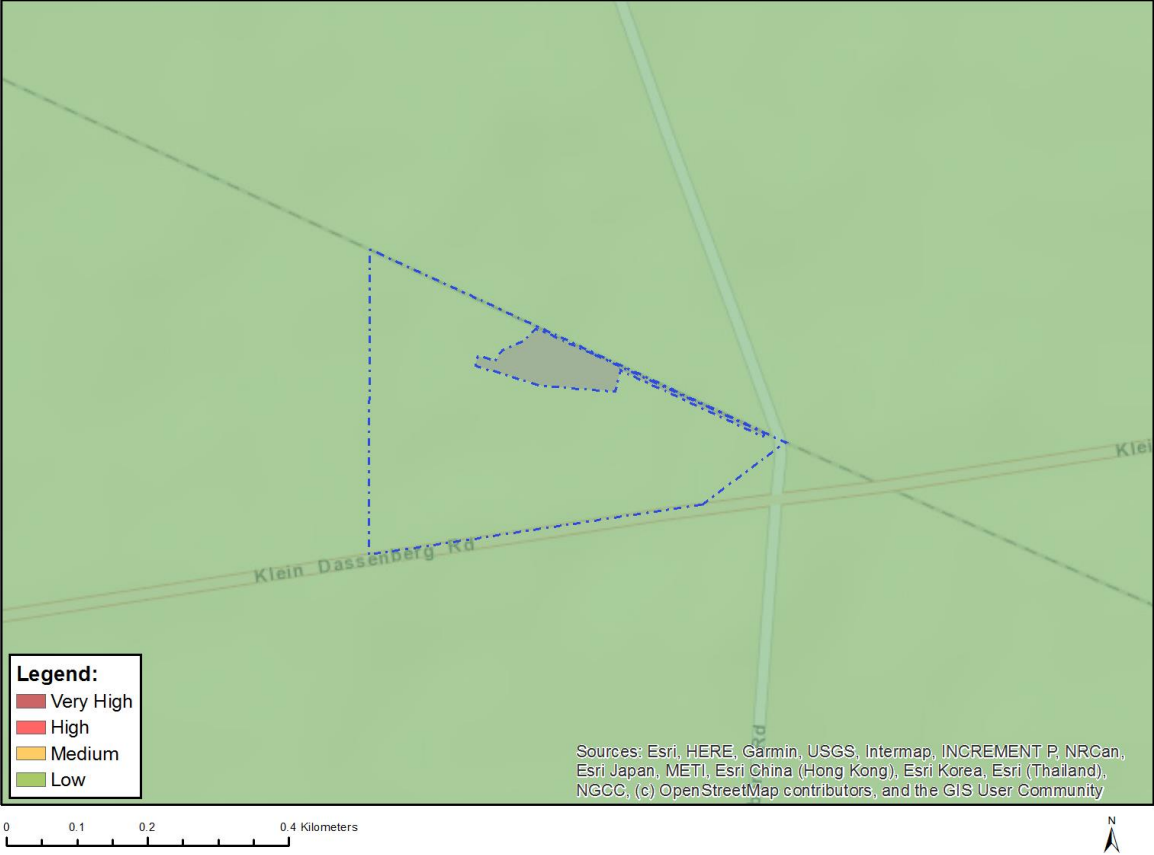


Very High sensitivity	High sensitivity	Medium sensitivity	Low sensitivity
			X

Sensitivity Features:

Sensitivity	Feature(s)
Low	Low sensitivity

MAP OF RELATIVE ARCHAEOLOGICAL AND CULTURAL HERITAGE THEME SENSITIVITY

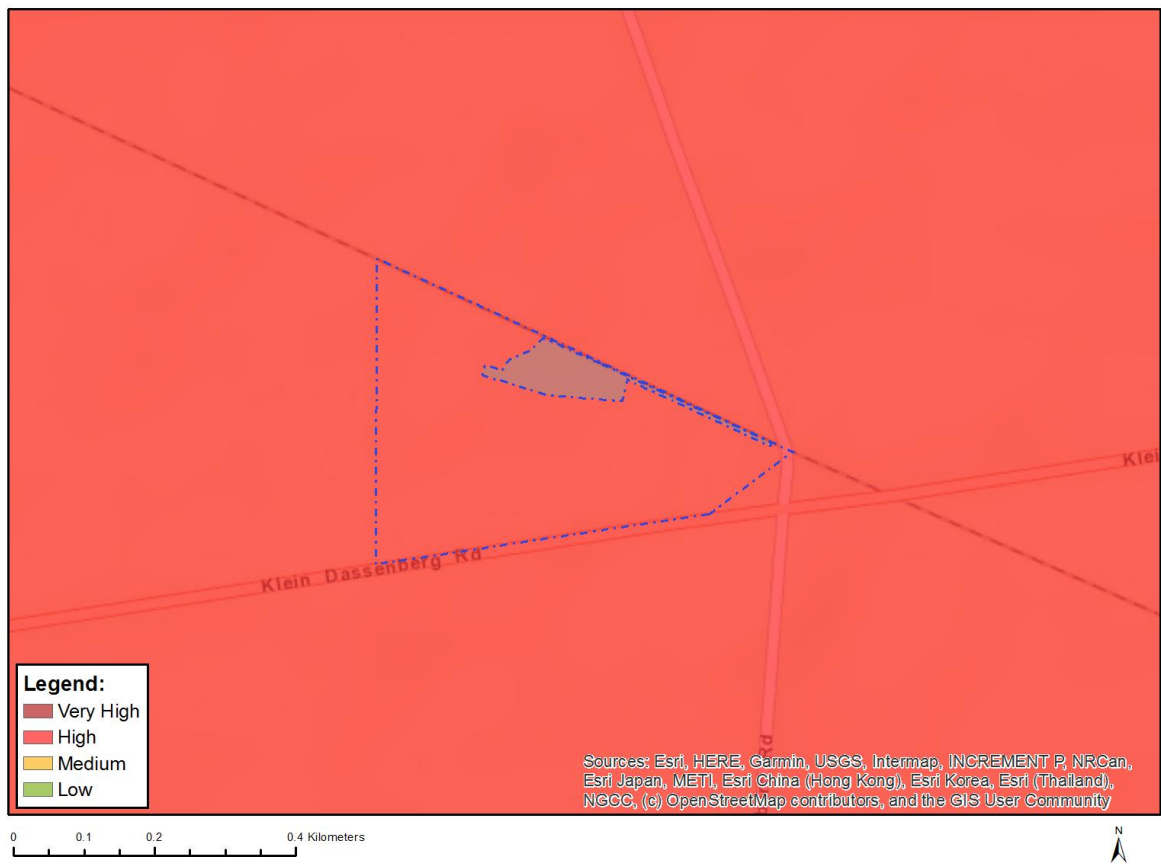


Very High sensitivity	High sensitivity	Medium sensitivity	Low sensitivity
			X

Sensitivity Features:

Sensitivity	Feature(s)
Low	Low sensitivity

MAP OF RELATIVE CIVIL AVIATION THEME SENSITIVITY

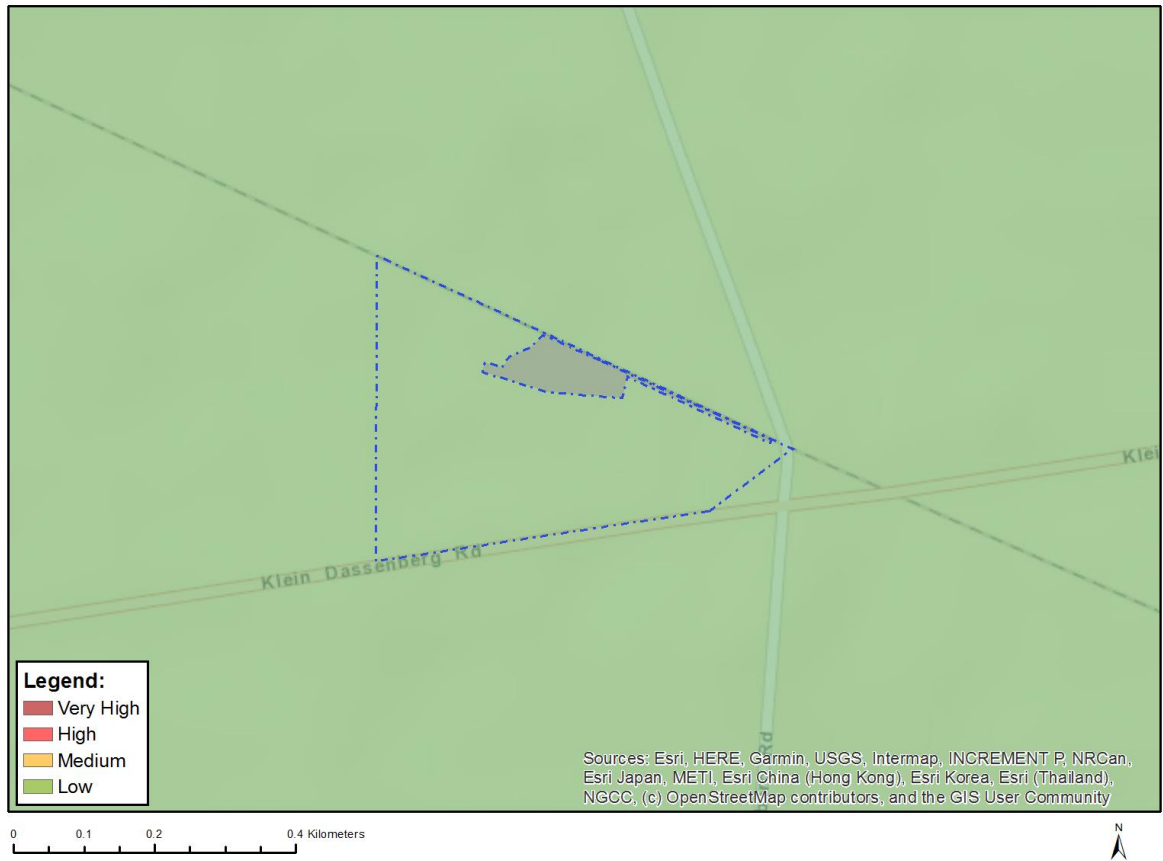


Very High sensitivity	High sensitivity	Medium sensitivity	Low sensitivity
	X		

Sensitivity Features:

Sensitivity	Feature(s)
High	Dangerous and restricted airspace as demarcated
Medium	Between 8 and 15 km of other civil aviation aerodrome

MAP OF RELATIVE DEFENCE THEME SENSITIVITY

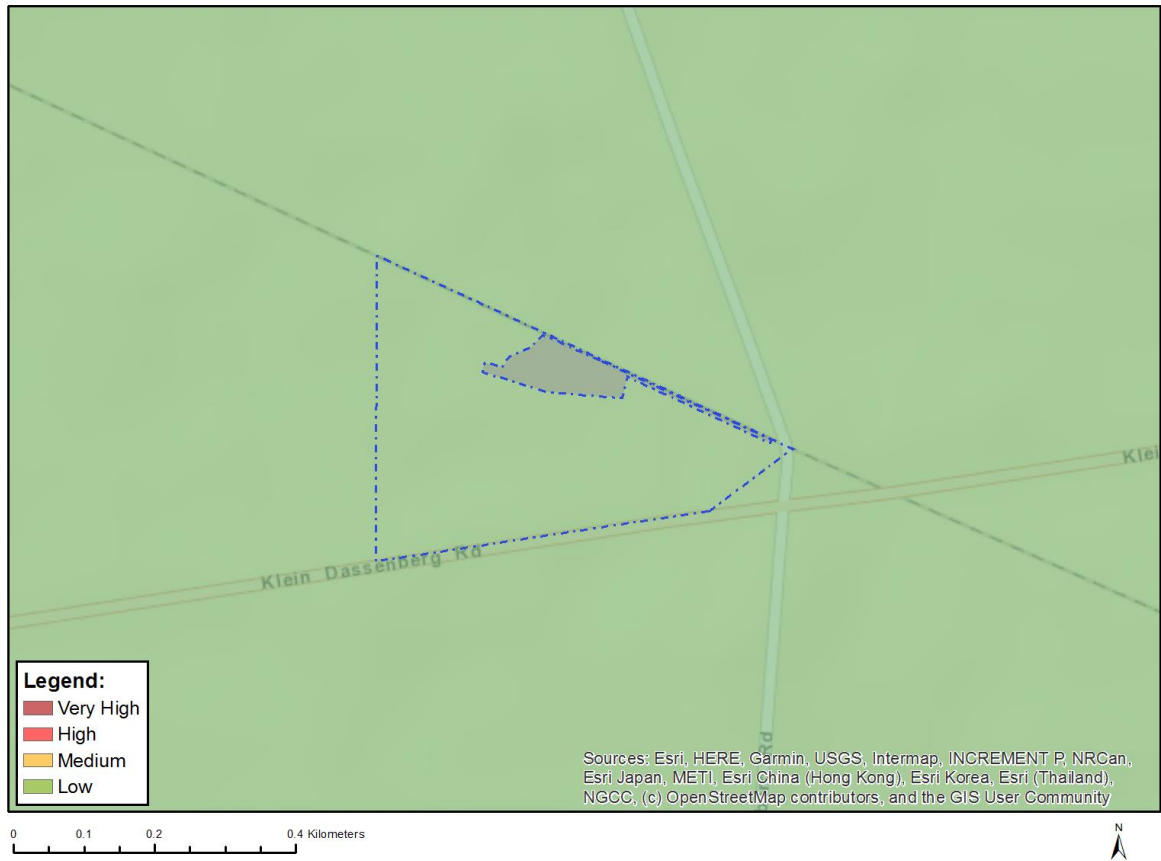


Very High sensitivity	High sensitivity	Medium sensitivity	Low sensitivity
			X

Sensitivity Features:

Sensitivity	Feature(s)
Low	Low Sensitivity

MAP OF RELATIVE PALEONTOLOGY THEME SENSITIVITY

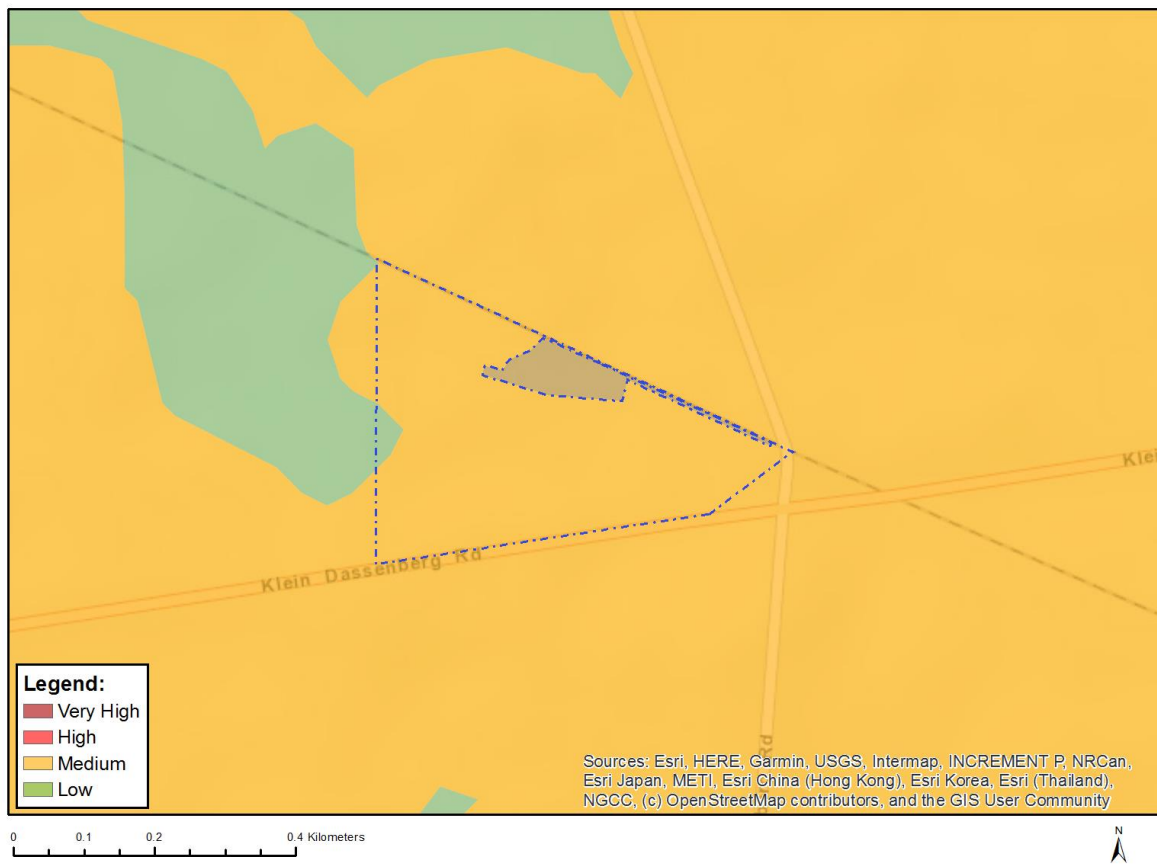


Very High sensitivity	High sensitivity	Medium sensitivity	Low sensitivity
			X

Sensitivity Features:

Sensitivity	Feature(s)
Low	Features with a Low paleontological sensitivity

MAP OF RELATIVE PLANT SPECIES THEME SENSITIVITY



Where only a sensitive plant unique number or sensitive animal unique number is provided in the screening report and an assessment is required, the environmental assessment practitioner (EAP) or specialist is required to email SANBI at eiadatarequests@sanbi.org.za listing all sensitive species with their unique identifiers for which information is required. The name has been withheld as the species may be prone to illegal harvesting and must be protected. SANBI will release the actual species name after the details of the EAP or specialist have been documented.

Very High sensitivity	High sensitivity	Medium sensitivity	Low sensitivity
		X	

Sensitivity Features:

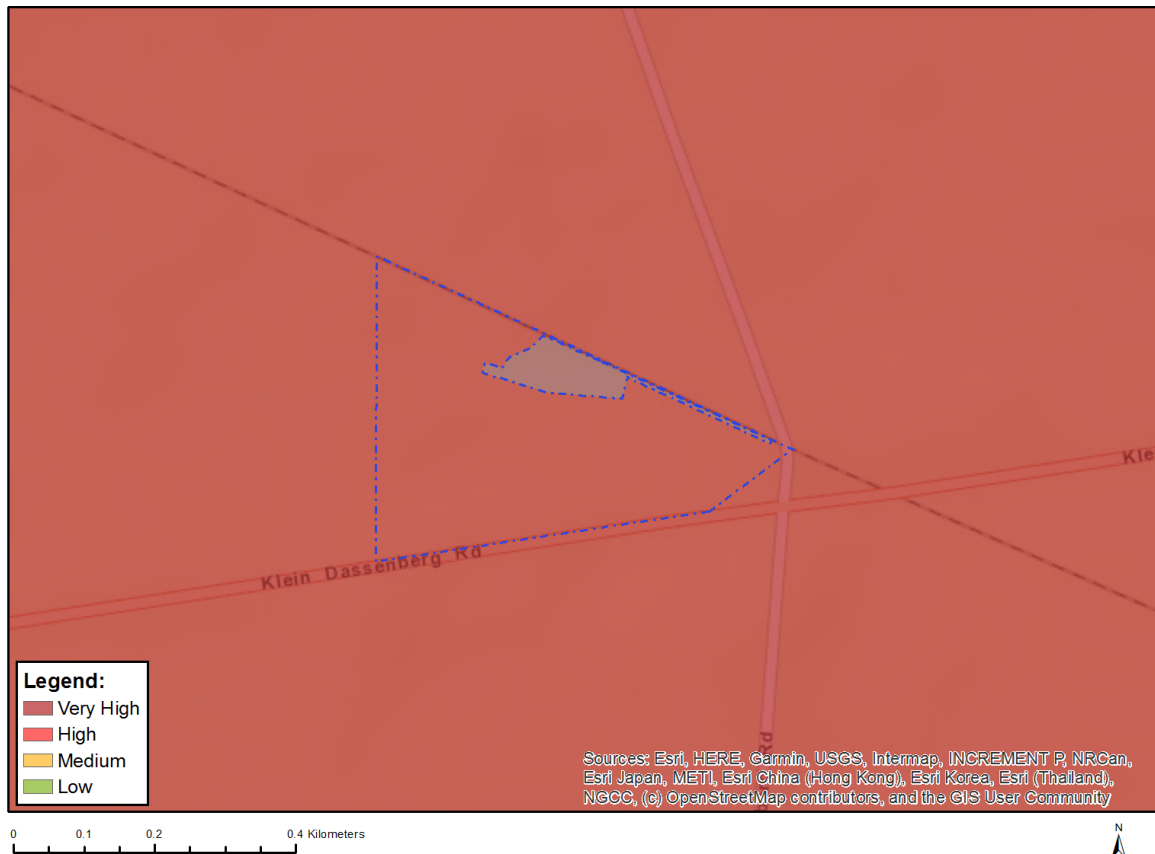
Sensitivity	Feature(s)
Medium	Skiatophytum flaccidifolium
Medium	Lampranthus amoenus
Medium	Lampranthus aureus
Medium	Lampranthus filicaulis
Medium	Lampranthus leptaleon
Medium	Lampranthus peacockiae
Medium	Lampranthus spiniformis
Medium	Lampranthus stenopetalus
Medium	Lampranthus stenus
Medium	Sensitive species 244
Medium	Antimima aristulata
Medium	Cleretum clavatum
Medium	Ruschia geminiflora

Medium	<i>Ruschia tecta</i>
Medium	<i>Drosanthemum hispidifolium</i>
Medium	<i>Amphithalea ericifolia</i> subsp. <i>erecta</i>
Medium	<i>Aspalathus horizontalis</i>
Medium	<i>Aspalathus lotoides</i> subsp. <i>lotoides</i>
Medium	<i>Aspalathus muraltioides</i>
Medium	<i>Aspalathus retroflexa</i> subsp. <i>bicolor</i>
Medium	<i>Lebeckia plukenetiana</i>
Medium	<i>Podalyria sericea</i>
Medium	<i>Thesium litoreum</i>
Medium	<i>Leucadendron cinereum</i>
Medium	<i>Leucadendron corymbosum</i>
Medium	<i>Leucadendron lanigerum</i> var. <i>lanigerum</i>
Medium	<i>Leucadendron levisanus</i>
Medium	<i>Leucadendron stellare</i>
Medium	<i>Leucadendron thymifolium</i>
Medium	<i>Leucospermum hypophyllocarpodendron</i> subsp. <i>canaliculatum</i>
Medium	<i>Leucospermum hypophyllocarpodendron</i> subsp. <i>hypophyllocarpodendron</i>
Medium	<i>Leucospermum parile</i>
Medium	<i>Leucospermum tomentosum</i>
Medium	<i>Protea burchellii</i>
Medium	<i>Diastella proteoides</i>
Medium	<i>Serruria brownii</i>
Medium	<i>Serruria linearis</i>
Medium	<i>Serruria roxburghii</i>
Medium	<i>Serruria trilopha</i>
Medium	<i>Roella arenaria</i>
Medium	<i>Phyllopodium mimetes</i>
Medium	<i>Microdon capitatus</i>
Medium	<i>Manulea corymbosa</i>
Medium	<i>Selago psammophila</i>
Medium	<i>Pentameris bachmannii</i>
Medium	<i>Pentameris pholiuroides</i>
Medium	<i>Anthospermum ericifolium</i>
Medium	<i>Echiostachys incanus</i>
Medium	<i>Echiostachys spicatus</i>
Medium	<i>Aristea zeyheri</i>
Medium	Sensitive species 267
Medium	Sensitive species 703
Medium	Sensitive species 533
Medium	Sensitive species 878
Medium	<i>Geissorhiza eurystigma</i>
Medium	<i>Geissorhiza humilis</i>
Medium	<i>Geissorhiza monanthos</i>
Medium	<i>Geissorhiza purpurascens</i>
Medium	<i>Geissorhiza radians</i>
Medium	<i>Geissorhiza setacea</i>
Medium	<i>Ixia curta</i>
Medium	<i>Ixia tenuifolia</i>
Medium	Sensitive species 881
Medium	Sensitive species 683
Medium	<i>Romulea eximia</i>
Medium	Sensitive species 830
Medium	Sensitive species 863
Medium	<i>Pauridia alba</i>
Medium	<i>Pauridia canaliculata</i>
Medium	<i>Pauridia linearis</i>
Medium	<i>Pauridia pygmaea</i>
Medium	<i>Oxalis pallens</i>
Medium	<i>Erica malmesburiensis</i>

Medium	<i>Stylapterus fruticosus</i>
Medium	<i>Hermannia procumbens</i> subsp. <i>procumbens</i>
Medium	Sensitive species 222
Medium	<i>Sebaea rara</i>
Medium	<i>Adenogramma rigida</i>
Medium	<i>Hessea cinnamomea</i>
Medium	Sensitive species 133
Medium	<i>Isolepis inconspicua</i>
Medium	<i>Isolepis leucoloma</i>
Medium	<i>Cannomois arenicola</i>
Medium	<i>Elegia prominens</i>
Medium	<i>Elegia acockii</i>
Medium	<i>Restio duthieae</i>
Medium	<i>Restio micans</i>
Medium	<i>Restio impolitus</i>
Medium	<i>Restio papillosus</i>
Medium	Sensitive species 985
Medium	Sensitive species 120
Medium	<i>Pterygodium microglossum</i>
Medium	<i>Gnidia spicata</i>
Medium	<i>Lachnaea uniflora</i>
Medium	<i>Metalasia capitata</i>
Medium	<i>Metalasia octoflora</i>
Medium	<i>Marasmodes fasciculata</i>
Medium	<i>Steirodiscus speciosus</i>
Medium	<i>Steirodiscus tagetes</i>
Medium	<i>Senecio foeniculoides</i>
Medium	<i>Cotula duckittiae</i>
Medium	<i>Cotula eckloniana</i>
Medium	<i>Athanasia adenantha</i>
Medium	<i>Athanasia rugulosa</i>
Medium	<i>Arctotis angustifolia</i>
Medium	Sensitive species 1042
Medium	Sensitive species 786
Medium	<i>Chrysocoma esterhuyseniae</i>
Medium	<i>Stoebe gomphrenoides</i>
Medium	<i>Arctotheca forbesiana</i>
Medium	<i>Heterorhachis aculeata</i>
Medium	<i>Relhania rotundifolia</i>
Medium	<i>Diosma dichotoma</i>
Medium	<i>Agathosma corymbosa</i>
Medium	<i>Agathosma glabrata</i>
Medium	<i>Agathosma glandulosa</i>
Medium	<i>Agathosma latipetala</i>
Medium	<i>Adenandra villosa</i> subsp. <i>biseriata</i>
Medium	<i>Macrostylis cassiopoides</i> subsp. <i>dregeana</i>
Medium	<i>Macrostylis villosa</i> subsp. <i>villosa</i>
Medium	<i>Cliffortia ericifolia</i>
Medium	<i>Cliffortia hirta</i>
Medium	<i>Limonium purpuratum</i>
Medium	<i>Muraltia brevicornu</i>
Medium	<i>Muraltia decipiens</i>
Medium	<i>Muraltia macropetala</i>
Medium	Sensitive species 158
Medium	<i>Wurmbea capensis</i>
Medium	<i>Wurmbea inusta</i>
Medium	<i>Phylica harveyi</i>
Medium	<i>Phylica plumosa</i> var. <i>squarrosa</i>
Medium	<i>Phylica strigulosa</i>
Medium	<i>Phylica thunbergiana</i>

Medium	Codonorhiza azurea
Medium	Lampranthus glaucus
Medium	Argyrolobium velutinum
Medium	Xiphotheca reflexa
Medium	Aspalathus lebeckioides
Medium	Aspalathus recurva
Medium	Aspalathus tyloides
Medium	Leucospermum rodolentum
Medium	Protea scolymocephala
Medium	Sensitive species 593
Medium	Sensitive species 599
Medium	Elegia verreauxii
Medium	Restio paludosus
Medium	Restio rigoratus
Medium	Sensitive species 500
Medium	Sensitive species 654
Medium	Heliophila elata
Medium	Lachnaea capitata
Medium	Lachnaea grandiflora
Medium	Cotula pusilla
Medium	Sensitive species 1225
Medium	Caesia sabulosa

MAP OF RELATIVE TERRESTRIAL BIODIVERSITY THEME SENSITIVITY



Very High sensitivity	High sensitivity	Medium sensitivity	Low sensitivity
X			

Sensitivity Features:

Sensitivity	Feature(s)
Very High	Vulnerable ecosystem

OFFICIAL