

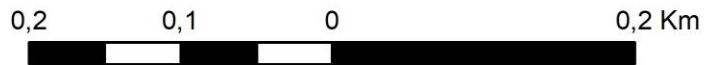
Prevailing Wind Direction: South-South-East  
 Secondary Wind Direction: South

Prepared for:  
 Confuel (Pty) Ltd



Prepared by:  
 Sharples Environmental Services CC

**PROPOSED DEVELOPMENT OF A TRUCK STOP AND ASSOCIATED INFRASTRUCTION ON ERVEN 56 AND 57, MOSSDUSTRIA, MOSSEL BAY LOCAL MUNICIPALITY, WESTERN CAPE.**

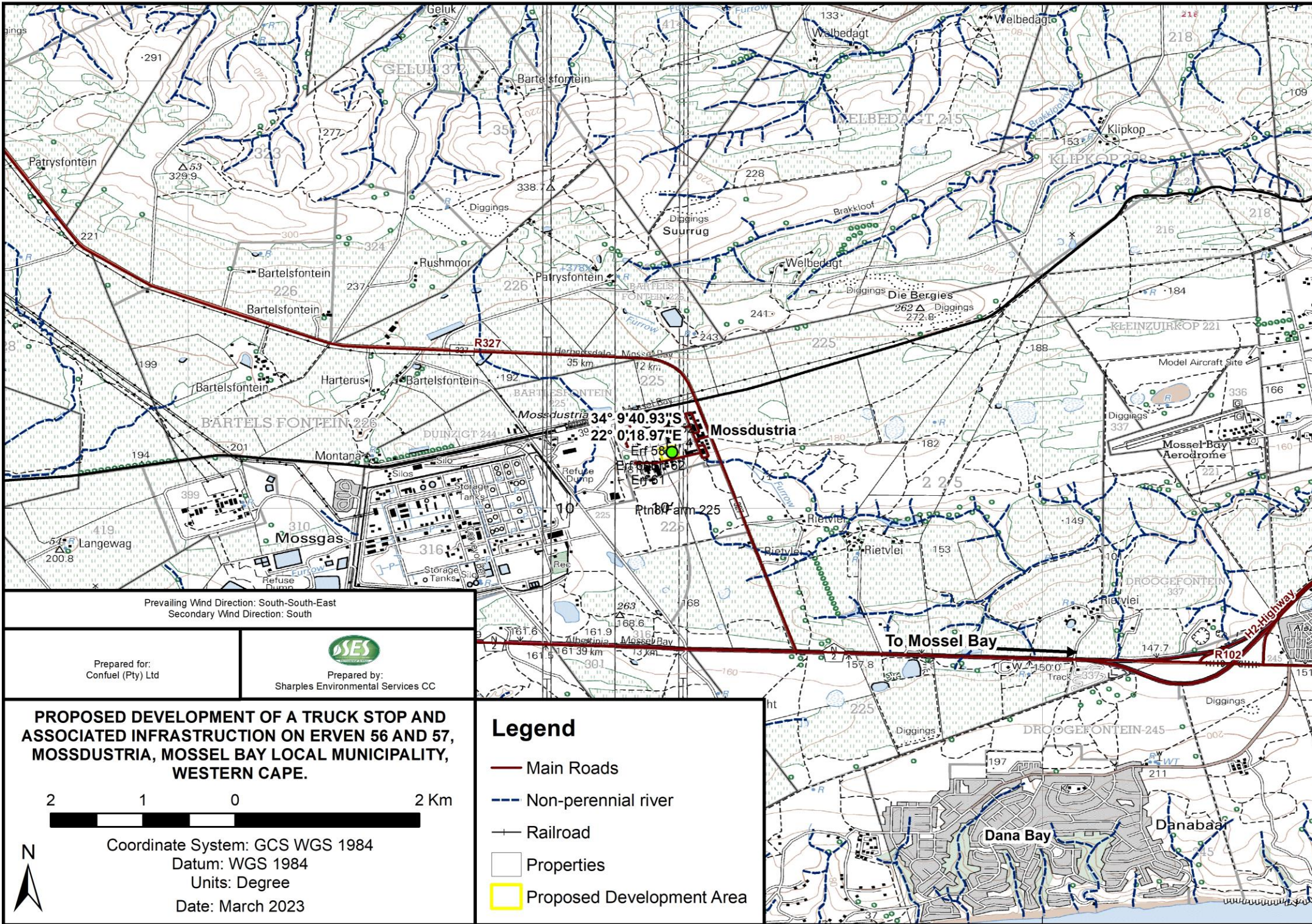


Coordinate System: GCS WGS 1984  
 Datum: WGS 1984  
 Units: Degree  
 Date: March 2023

**Legend**

- Main Roads
- Non-perennial river
- Railroad
- Properties
- Mossdustria Development Area

To Mossel Bay



Prevailing Wind Direction: South-South-East  
 Secondary Wind Direction: South

Prepared for:  
 Confuel (Pty) Ltd



Prepared by:  
 Sharples Environmental Services CC

**PROPOSED DEVELOPMENT OF A TRUCK STOP AND ASSOCIATED INFRASTRUCTION ON ERVEN 56 AND 57, MOSSDUSTRIA, MOSSEL BAY LOCAL MUNICIPALITY, WESTERN CAPE.**



Coordinate System: GCS WGS 1984  
 Datum: WGS 1984  
 Units: Degree  
 Date: March 2023

**Legend**

- Main Roads
- - - Non-perennial river
- +— Railroad
- Properties
- Proposed Development Area