

**Legend**

- Points of Interest
- Road Network
- Access/Intersections/Rest stops
- Major culverts located along the route
- Minor pipe culverts located along the route
- Minor box culverts located along the route
- Start and End points of Auxiliary Lanes

**Heritage Resources**

- Heritage Value: IIIA
- Heritage Value: IIIB
- Heritage Value: IIIC
- Not Heritage (Point of Interest)

**Plant Species of Conservation Concern**

- Antimima piscodora
- Euphorbia colliculina
- Glottiphyllum linguiforme

**Aquatic resources identified**

- Non-perennial Drainage lines
- Wetlands

**Botanical Resources Sensitivities**

- Highly Sensitive
- Moderately Sensitive

**Proposed auxiliary lanes**

- Right-hand side
- Left-hand side
- Proposed project layout

**Boundary Data**

- Local Municipality
- Parent farms
- Palaeontological Resources

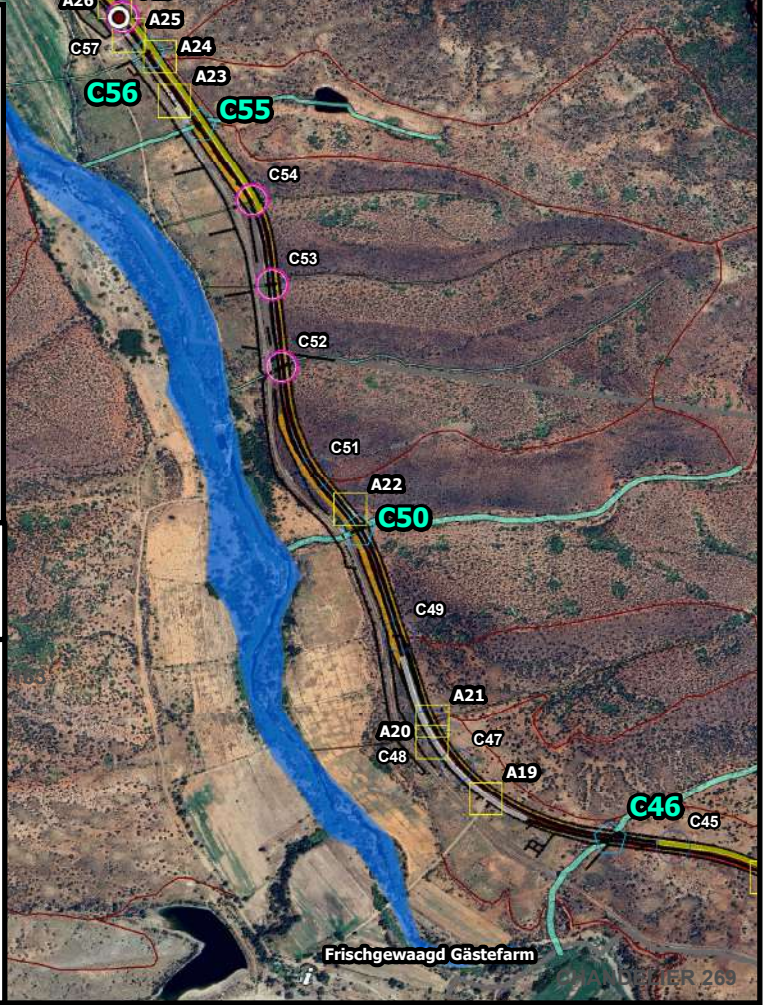
Prepared for:  
Western Cape -  
Department of Infrastructure:  
Transport Infrastructure Branch

 Prepared by:  
Sharples Environmental Services CC

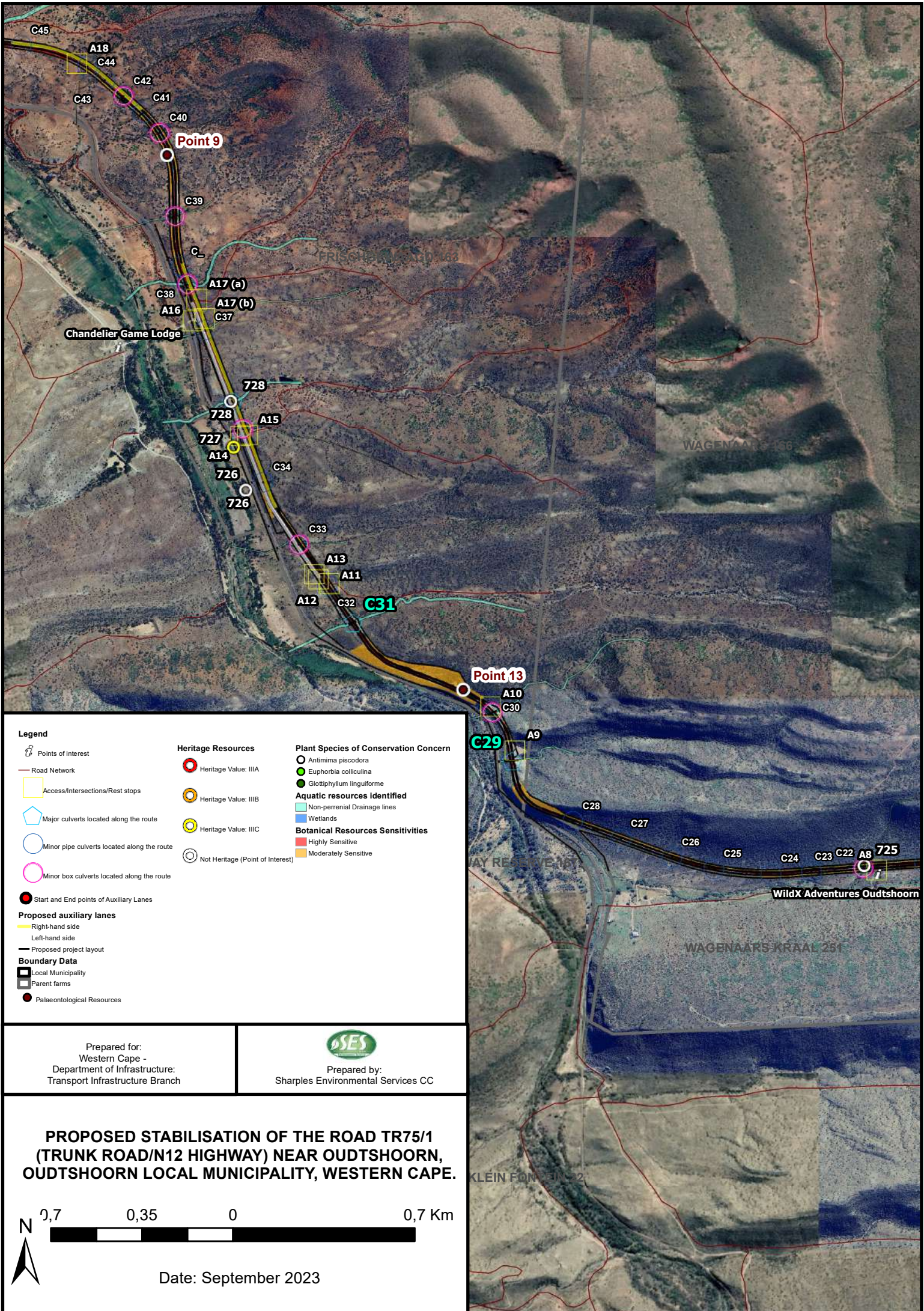
**PROPOSED STABILISATION OF THE ROAD TR75/1  
(TRUNK ROAD/N12 HIGHWAY) NEAR OUDTSHOORN,  
OUDTSHOORN LOCAL MUNICIPALITY, WESTERN CAPE.**

0,7 0,35 0 0,7 Km

Date: September 2023







**Legend**

- Points of Interest
- Road Network
- Access/Intersections/Rest stops
- Major culverts located along the route
- Minor pipe culverts located along the route
- Minor box culverts located along the route
- Start and End points of Auxiliary Lanes

**Proposed auxiliary lanes**

- Right-hand side
- Left-hand side
- Proposed project layout

**Boundary Data**

- Local Municipality
- Parent farms
- Palaeontological Resources

**Heritage Resources**

- Heritage Value: IIIA
- Heritage Value: IIIB
- Heritage Value: IIC
- Not Heritage (Point of Interest)

**Plant Species of Conservation Concern**

- Antimima piscodora
- Euphorbia colliculina
- Glottiphyllum linguiforme

**Aquatic resources identified**

- Non-perennial Drainage lines
- Wetlands

**Botanical Resources Sensitivities**

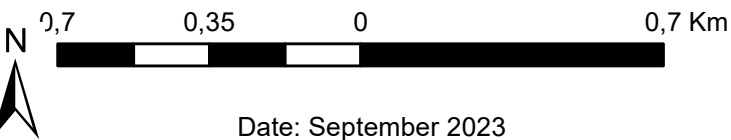
- Highly Sensitive
- Moderately Sensitive

Prepared for:  
Western Cape -  
Department of Infrastructure:  
Transport Infrastructure Branch



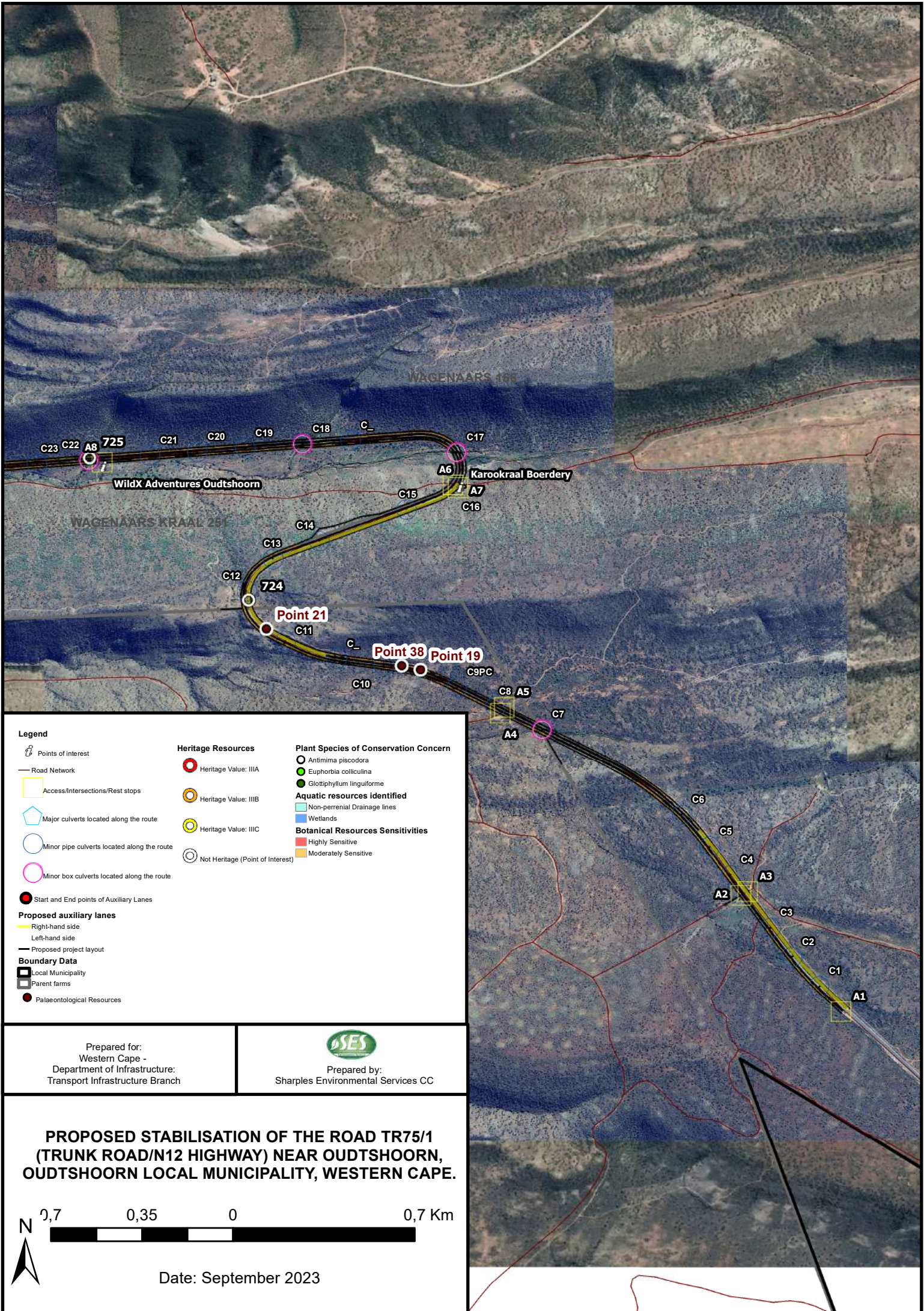
Prepared by:  
Sharples Environmental Services CC

**PROPOSED STABILISATION OF THE ROAD TR75/1  
(TRUNK ROAD/N12 HIGHWAY) NEAR OUDTSHOORN,  
OUDTSHOORN LOCAL MUNICIPALITY, WESTERN CAPE.**



Date: September 2023





**Legend**

- Points of Interest
- Road Network
- Access/Intersections/Rest stops
- Major culverts located along the route
- Minor pipe culverts located along the route
- Minor box culverts located along the route

**Heritage Resources**

- Heritage Value: IIIA
- Heritage Value: IIIB
- Heritage Value: IIIC
- Not Heritage (Point of Interest)

**Plant Species of Conservation Concern**

- Antimima piscodora
- Euphorbia colliculina
- Glottiphyllum linguiforme

**Aquatic resources identified**

- Non-perennial Drainage lines
- Wetlands

**Botanical Resources Sensitivities**

- Highly Sensitive
- Moderately Sensitive

**Proposed auxiliary lanes**

- Right-hand side
- Left-hand side
- Proposed project layout

**Boundary Data**

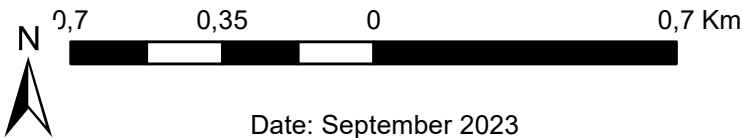
- Local Municipality
- Parent farms
- Palaeontological Resources

Prepared for:  
Western Cape -  
Department of Infrastructure:  
Transport Infrastructure Branch



Prepared by:  
Sharples Environmental Services CC

**PROPOSED STABILISATION OF THE ROAD TR75/1  
(TRUNK ROAD/N12 HIGHWAY) NEAR OUDTSHOORN,  
OUDTSHOORN LOCAL MUNICIPALITY, WESTERN CAPE.**







**Legend**

- Points of Interest
- Road Network
- Access/Intersections/Rest stops
- Major culverts located along the route
- Minor pipe culverts located along the route
- Minor box culverts located along the route
- Start and End points of Auxiliary Lanes

**Heritage Resources**

- Heritage Value: IIIA
- Heritage Value: IIIB
- Heritage Value: IIIC
- Not Heritage (Point of Interest)

**Plant Species of Conservation Concern**

- Antimima piscodora*
- Euphorbia colliculina*
- Glottiphyllum linguiforme*

**Aquatic resources identified**

- Non-perennial Drainage lines
- Wetlands

**Botanical Resources Sensitivities**

- Highly Sensitive
- Moderately Sensitive

**Proposed auxiliary lanes**

- Right-hand side
- Left-hand side
- Proposed project layout

**Boundary Data**

- Local Municipality
- Parent farms
- Palaeontological Resources

Prepared for:  
Western Cape -  
Department of Infrastructure:  
Transport Infrastructure Branch



Prepared by:  
Sharples Environmental Services CC

**PROPOSED STABILISATION OF THE ROAD TR75/1  
(TRUNK ROAD/N12 HIGHWAY) NEAR OUDTSHOORN,  
OUDTSHOORN LOCAL MUNICIPALITY, WESTERN CAPE.**

0,2      0,1      0      0,2 Km

Date: September 2023





**Legend**

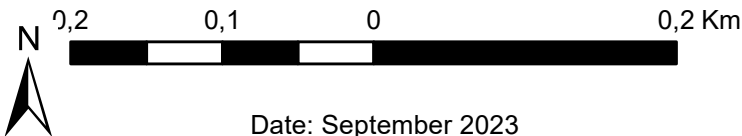
- Points of Interest
- Road Network
- Access/Intersections/Rest stops
- Major culverts located along the route
- Minor pipe culverts located along the route
- Minor box culverts located along the route
- Start and End points of Auxiliary Lanes
- Proposed auxiliary lanes**
  - Right-hand side
  - Left-hand side
  - Proposed project layout
- Boundary Data**
  - Local Municipality
  - Parent farms
  - Palaeontological Resources
- Heritage Resources**
  - Heritage Value: IIIA
  - Heritage Value: IIIB
  - Heritage Value: IIIC
  - Not Heritage (Point of Interest)
- Plant Species of Conservation Concern**
  - Antimima piscodora
  - Euphorbia colliculina
  - Glottiphyllum linguiforme
- Aquatic resources identified**
  - Non-perennial Drainage lines
  - Wetlands
- Botanical Resources Sensitivities**
  - Highly Sensitive
  - Moderately Sensitive

Prepared for:  
Western Cape -  
Department of Infrastructure:  
Transport Infrastructure Branch

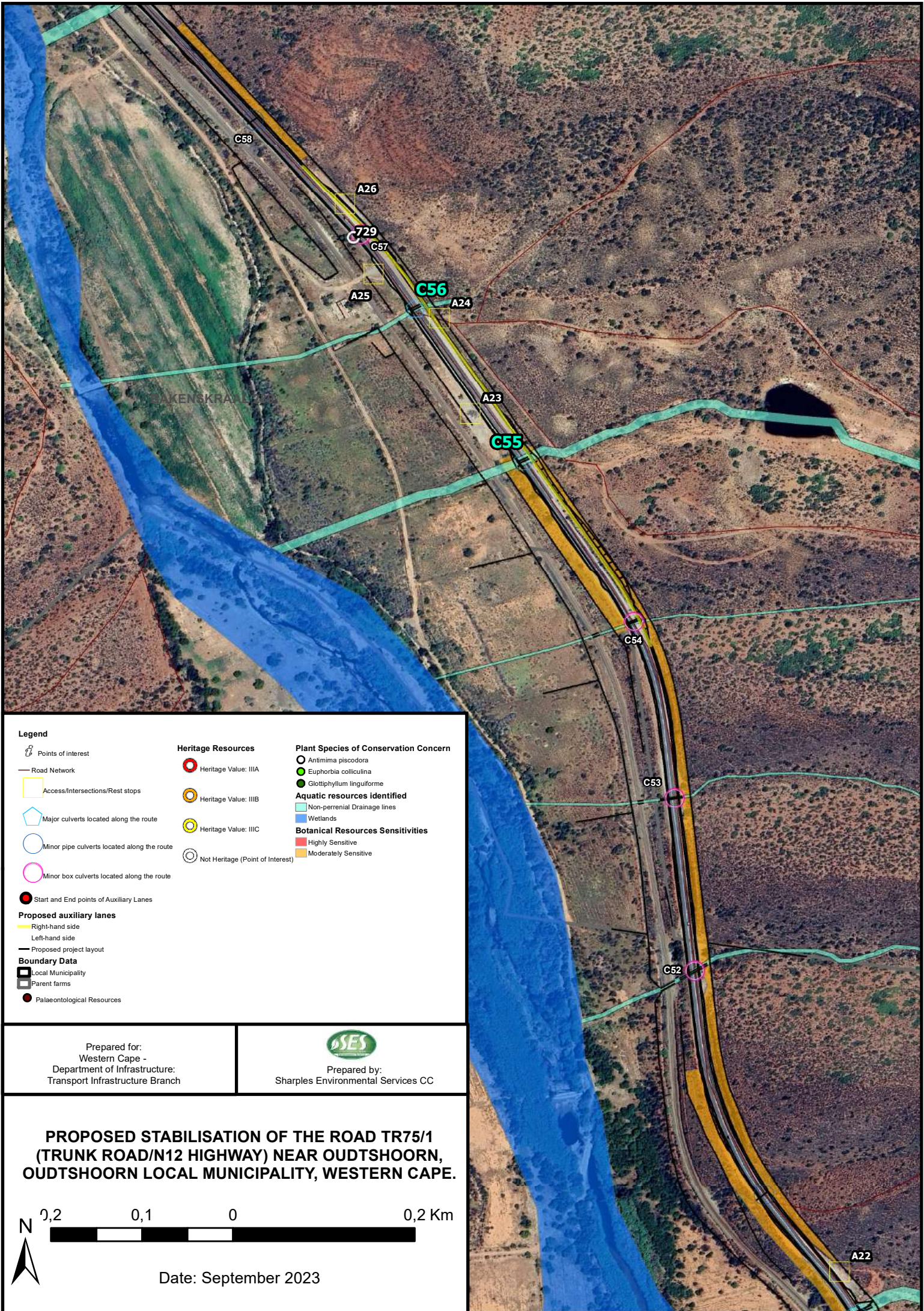


Prepared by:  
Sharples Environmental Services CC

**PROPOSED STABILISATION OF THE ROAD TR75/1  
(TRUNK ROAD/N12 HIGHWAY) NEAR OUDTSHOORN,  
OUDTSHOORN LOCAL MUNICIPALITY, WESTERN CAPE.**







**Legend**

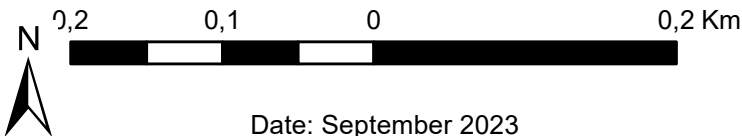
- Points of interest
- Road Network
- Access/Intersections/Rest stops
- Major culverts located along the route
- Minor pipe culverts located along the route
- Minor box culverts located along the route
- Start and End points of Auxiliary Lanes
- Proposed auxiliary lanes**
  - Right-hand side
  - Left-hand side
  - Proposed project layout
- Boundary Data**
  - Local Municipality
  - Parent farms
  - Palaeontological Resources
- Heritage Resources**
  - Heritage Value: IIIA
  - Heritage Value: IIIB
  - Heritage Value: IIIC
  - Not Heritage (Point of Interest)
- Plant Species of Conservation Concern**
  - Antimima piscodora
  - Euphorbia colliculina
  - Glottiphyllum linguiforme
- Aquatic resources identified**
  - Non-perennial Drainage lines
  - Wetlands
- Botanical Resources Sensitivities**
  - Highly Sensitive
  - Moderately Sensitive

Prepared for:  
Western Cape -  
Department of Infrastructure:  
Transport Infrastructure Branch



Prepared by:  
Sharples Environmental Services CC

**PROPOSED STABILISATION OF THE ROAD TR75/1  
(TRUNK ROAD/N12 HIGHWAY) NEAR OUDTSHOORN,  
OUDTSHOORN LOCAL MUNICIPALITY, WESTERN CAPE.**



Date: September 2023





**Legend**

- Points of Interest
- Road Network
- Access/Intersections/Rest stops
- Major culverts located along the route
- Minor pipe culverts located along the route
- Minor box culverts located along the route
- Start and End points of Auxiliary Lanes

**Proposed auxiliary lanes**

- Right-hand side
- Left-hand side
- Proposed project layout

**Boundary Data**

- Local Municipality
- Parent farms
- Palaeontological Resources

**Heritage Resources**

- Heritage Value: IIIA
- Heritage Value: IIIB
- Heritage Value: IIIC
- Not Heritage (Point of Interest)

**Plant Species of Conservation Concern**

- Antimima piscodora
- Euphorbia colliculina
- Glottiphyllum linguiforme

**Aquatic resources identified**

- Non-perennial Drainage lines
- Wetlands

**Botanical Resources Sensitivities**

- Highly Sensitive
- Moderately Sensitive

Prepared for:  
Western Cape -  
Department of Infrastructure:  
Transport Infrastructure Branch

Prepared by:  
Sharples Environmental Services CC

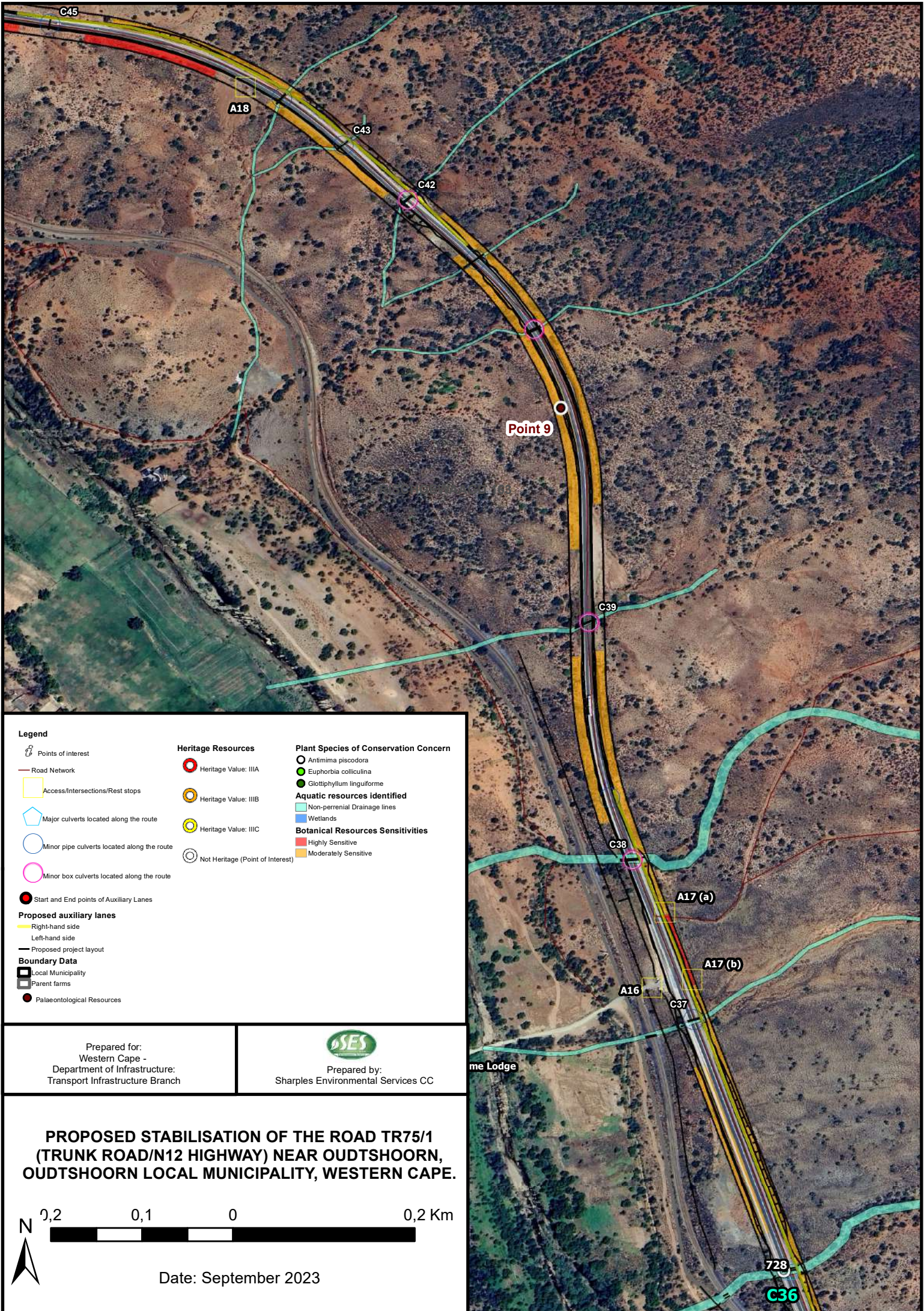
**PROPOSED STABILISATION OF THE ROAD TR75/1  
(TRUNK ROAD/N12 HIGHWAY) NEAR OUDTSHOORN,  
OUDTSHOORN LOCAL MUNICIPALITY, WESTERN CAPE.**

0,2      0,1      0      0,2 Km

Date: September 2023







**Legend**

- Points of interest
- Road Network
- Access/Intersections/Rest stops
- Major culverts located along the route
- Minor pipe culverts located along the route
- Minor box culverts located along the route
- Start and End points of Auxiliary Lanes

**Proposed auxiliary lanes**

- Right-hand side
- Left-hand side
- Proposed project layout

**Boundary Data**

- Local Municipality
- Parent farms
- Palaeontological Resources

**Heritage Resources**

- Heritage Value: IIIA
- Heritage Value: IIIB
- Heritage Value: IIIC
- Not Heritage (Point of Interest)

**Plant Species of Conservation Concern**

- Antimima piscodora
- Euphorbia colliculina
- Glottiphyllum linguiforme

**Aquatic resources identified**

- Non-perennial Drainage lines
- Wetlands

**Botanical Resources Sensitivities**

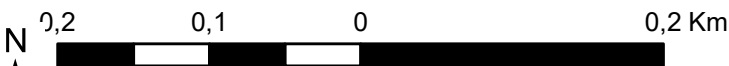
- Highly Sensitive
- Moderately Sensitive

Prepared for:  
Western Cape -  
Department of Infrastructure:  
Transport Infrastructure Branch



Prepared by:  
Sharple's Environmental Services CC

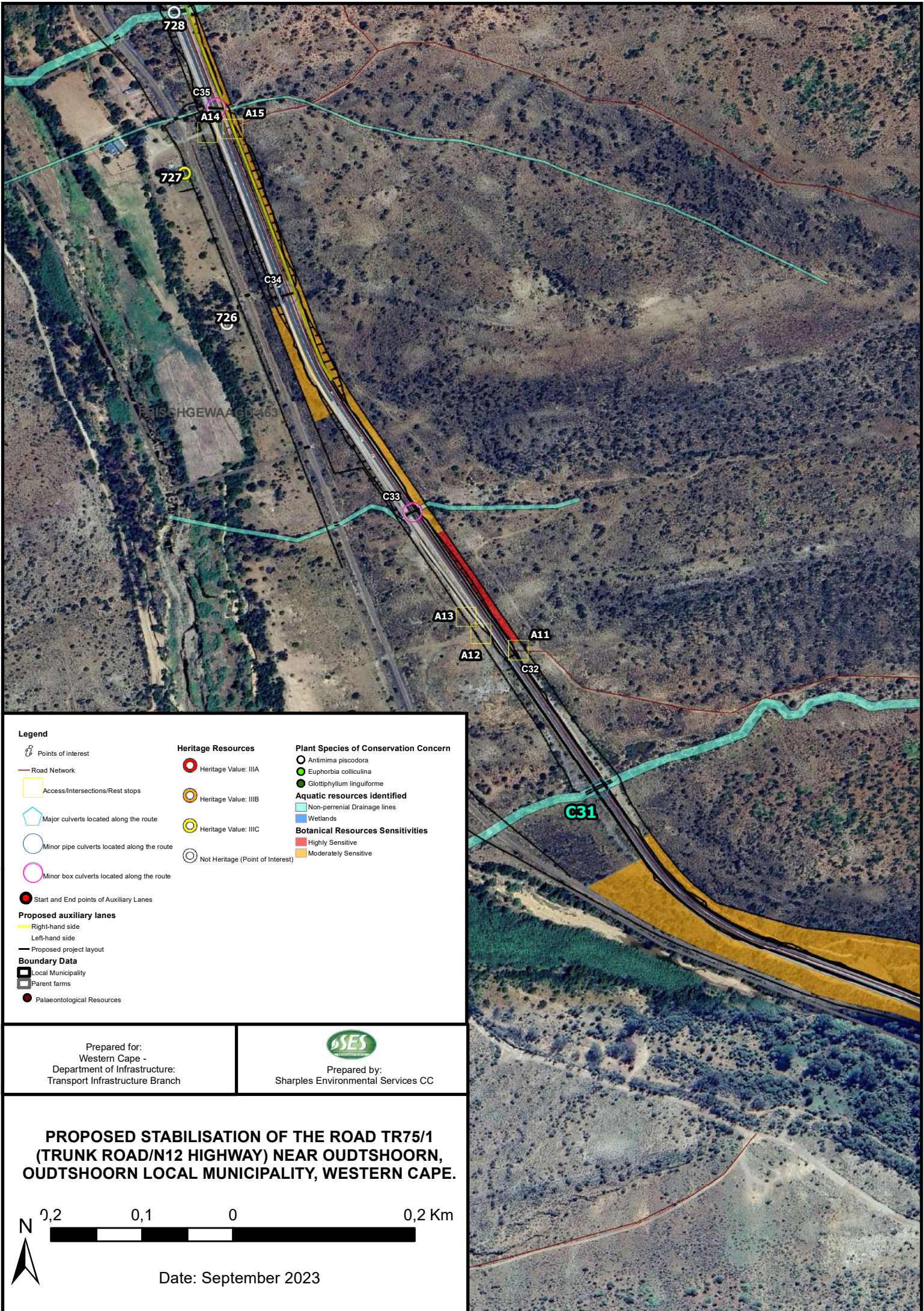
**PROPOSED STABILISATION OF THE ROAD TR75/1  
(TRUNK ROAD/N12 HIGHWAY) NEAR OUDTSHOORN,  
OUDTSHOORN LOCAL MUNICIPALITY, WESTERN CAPE.**



Date: September 2023

728  
C36





**Legend**

- Points of Interest
- Road Network
- Access/Intersections/Rest stops
- Major culverts located along the route
- Minor pipe culverts located along the route
- Minor box culverts located along the route
- Start and End points of Auxiliary Lanes
- Proposed auxiliary lanes**
  - Right-hand side
  - Left-hand side
  - Proposed project layout
- Boundary Data**
  - Local Municipality
  - Parent farms
  - Palaeontological Resources

**Heritage Resources**

- Heritage Value: IIIA
- Heritage Value: IIIB
- Heritage Value: IIIC
- Not Heritage (Point of Interest)

**Plant Species of Conservation Concern**

- Antimima piscodora*
- Euphorbia colliculina*
- Glottiphyllum linguiforme*

**Aquatic resources identified**

- Non-perennial Drainage lines
- Wetlands

**Botanical Resources Sensitivities**

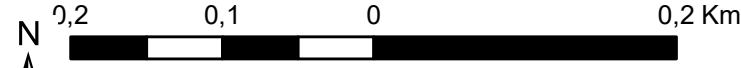
- Highly Sensitive
- Moderately Sensitive

Prepared for:  
Western Cape -  
Department of Infrastructure:  
Transport Infrastructure Branch



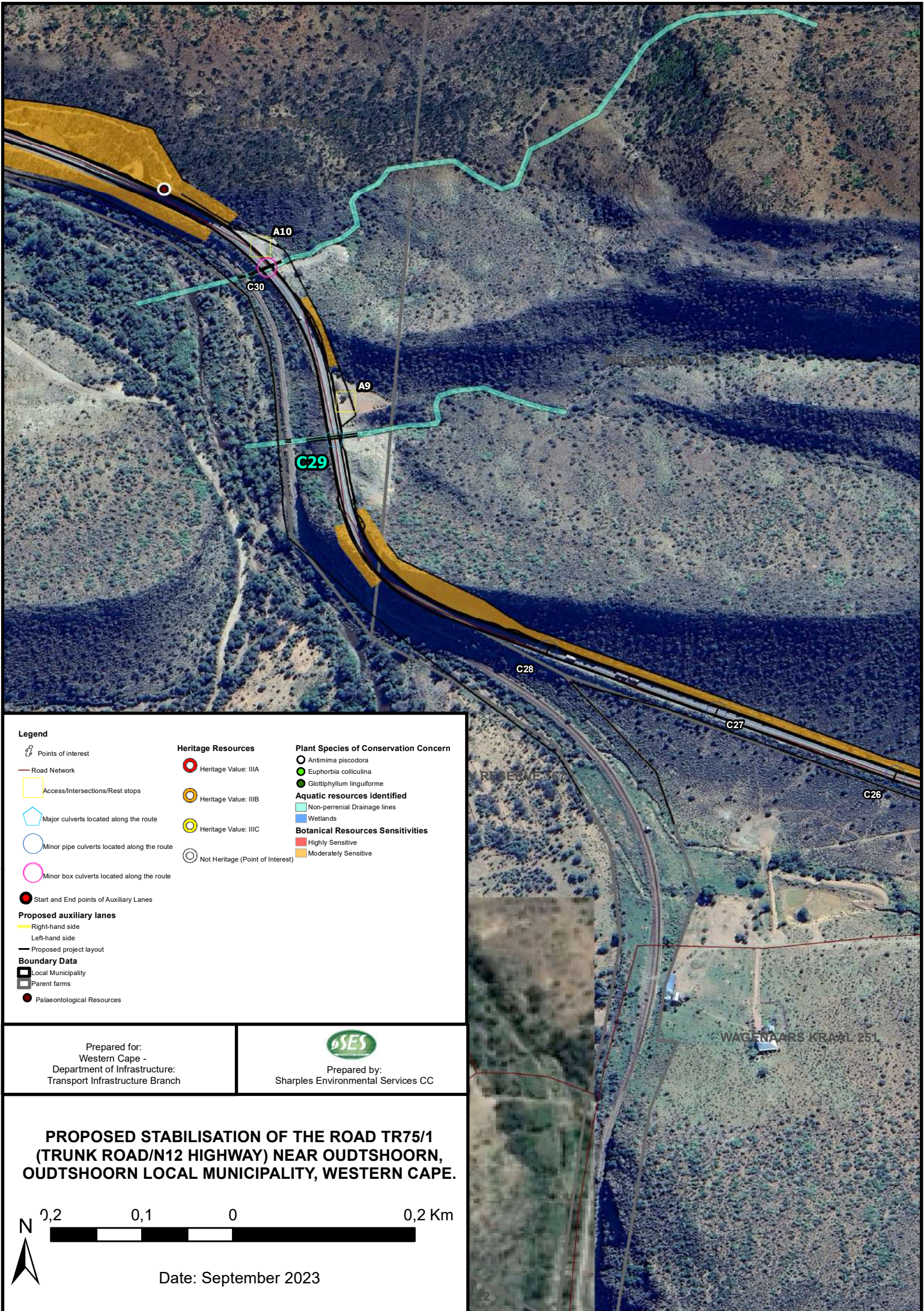
Prepared by:  
Sharples Environmental Services CC

**PROPOSED STABILISATION OF THE ROAD TR75/1  
(TRUNK ROAD/N12 HIGHWAY) NEAR OUDTSHOORN,  
OUDTSHOORN LOCAL MUNICIPALITY, WESTERN CAPE.**



Date: September 2023





**Legend**

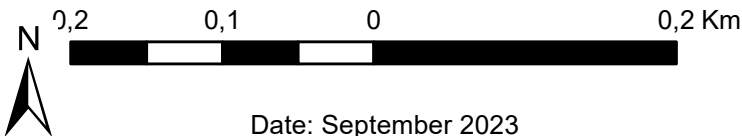
- |  |   |  |
|--|---|--|
| <ul style="list-style-type: none"> <li> Points of Interest</li> <li> Road Network</li> <li> Access/Intersections/Rest stops</li> <li> Major culverts located along the route</li> <li> Minor pipe culverts located along the route</li> <li> Minor box culverts located along the route</li> <li> Start and End points of Auxiliary Lanes</li> </ul> | <p><b>Heritage Resources</b></p> <ul style="list-style-type: none"> <li> Heritage Value: IIIA</li> <li> Heritage Value: IIIB</li> <li> Heritage Value: IIIC</li> <li> Not Heritage (Point of Interest)</li> </ul> | <p><b>Plant Species of Conservation Concern</b></p> <ul style="list-style-type: none"> <li> Antimima piscodora</li> <li> Euphorbia colliculina</li> <li> Glottiphyllum linguiforme</li> </ul> <p><b>Aquatic resources identified</b></p> <ul style="list-style-type: none"> <li> Non-perennial Drainage lines</li> <li> Wetlands</li> </ul> <p><b>Botanical Resources Sensitivities</b></p> <ul style="list-style-type: none"> <li> Highly Sensitive</li> <li> Moderately Sensitive</li> </ul> |
| <p><b>Proposed auxiliary lanes</b></p> <ul style="list-style-type: none"> <li> Right-hand side</li> <li> Left-hand side</li> <li> Proposed project layout</li> </ul> <p><b>Boundary Data</b></p> <ul style="list-style-type: none"> <li> Local Municipality</li> <li> Parent farms</li> <li> Palaeontological Resources</li> </ul>                   |   |  |

Prepared for:  
Western Cape -  
Department of Infrastructure:  
Transport Infrastructure Branch



Prepared by:  
Sharples Environmental Services CC

**PROPOSED STABILISATION OF THE ROAD TR75/1  
(TRUNK ROAD/N12 HIGHWAY) NEAR OUDTSHOORN,  
OUDTSHOORN LOCAL MUNICIPALITY, WESTERN CAPE.**







**Legend**

- Points of interest
- Road Network
- Access/Intersections/Rest stops
- Major culverts located along the route
- Minor pipe culverts located along the route
- Minor box culverts located along the route
- Start and End points of Auxiliary Lanes

**Heritage Resources**

- Heritage Value: IIIA
- Heritage Value: IIIB
- Heritage Value: IIIC
- Not Heritage (Point of Interest)

**Plant Species of Conservation Concern**

- Antimima piscodora
- Euphorbia colliculina
- Glottiphyllum linguiforme

**Aquatic resources identified**

- Non-perrenial Drainage lines
- Wetlands

**Botanical Resources Sensitivities**

- Highly Sensitive
- Moderately Sensitive

**Proposed auxiliary lanes**

- Right-hand side
- Left-hand side
- Proposed project layout

**Boundary Data**

- Local Municipality
- Parent farms
- Palaeontological Resources

Prepared for:  
Western Cape -  
Department of Infrastructure:  
Transport Infrastructure Branch

Prepared by:  
Sharples Environmental Services CC

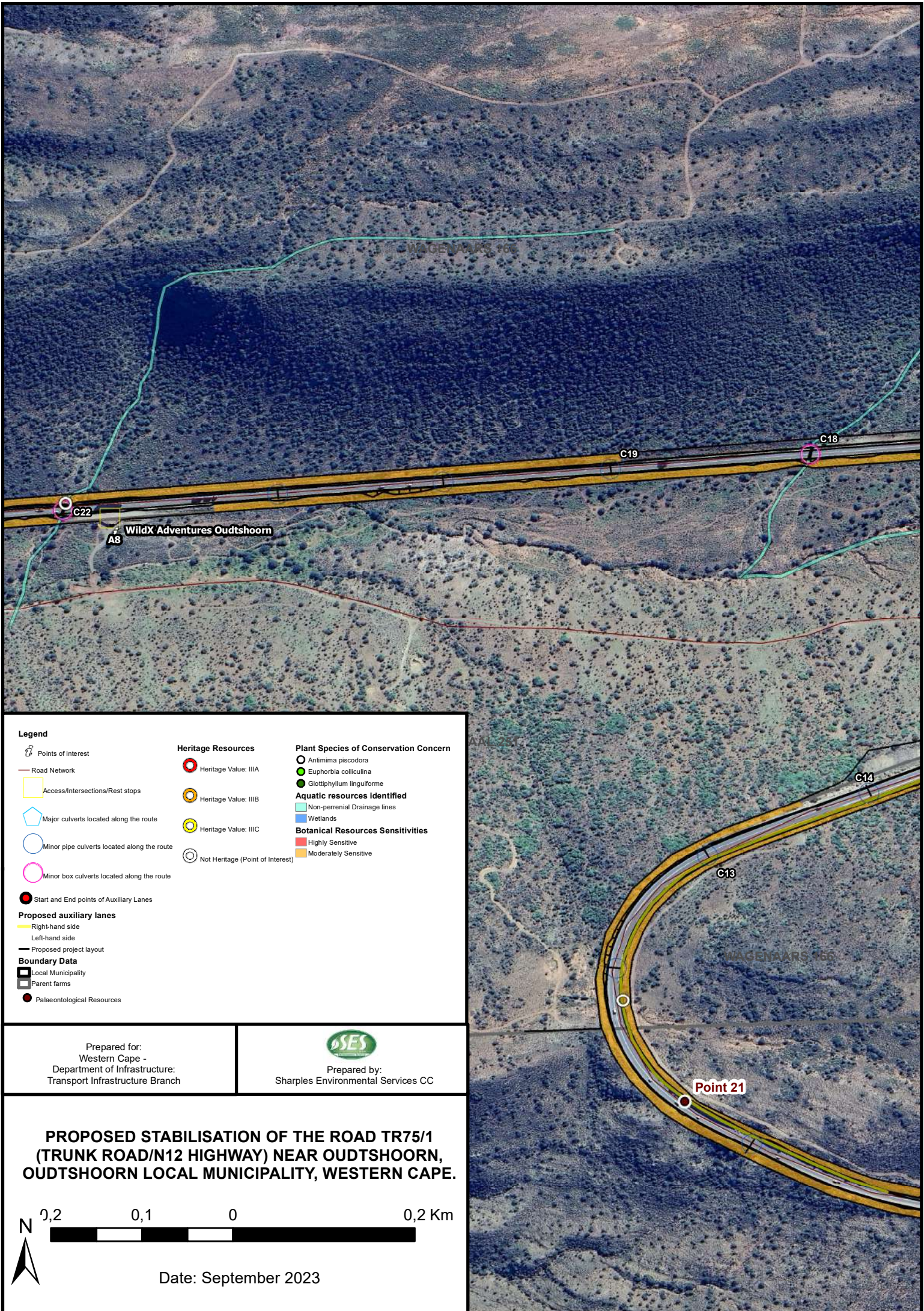
**PROPOSED STABILISATION OF THE ROAD TR75/1  
(TRUNK ROAD/N12 HIGHWAY) NEAR OUDTSHOORN,  
OUDTSHOORN LOCAL MUNICIPALITY, WESTERN CAPE.**

0,2 0,1 0 0,2 Km

Date: September 2023







**Legend**

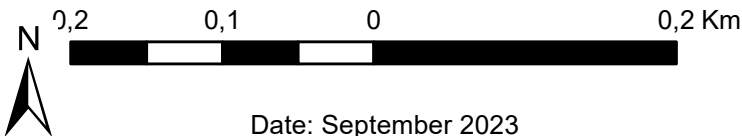
- Points of Interest
- Road Network
- Access/Intersections/Rest stops
- Major culverts located along the route
- Minor pipe culverts located along the route
- Minor box culverts located along the route
- Start and End points of Auxiliary Lanes
- Proposed auxiliary lanes**
  - Right-hand side
  - Left-hand side
  - Proposed project layout
- Boundary Data**
  - Local Municipality
  - Parent farms
  - Palaeontological Resources
- Heritage Resources**
  - Heritage Value: IIIA
  - Heritage Value: IIIB
  - Heritage Value: IIIC
  - Not Heritage (Point of Interest)
- Plant Species of Conservation Concern**
  - Antimima piscodora
  - Euphorbia colliculina
  - Glottiphyllum linguiforme
- Aquatic resources identified**
  - Non-perennial Drainage lines
  - Wetlands
- Botanical Resources Sensitivities**
  - Highly Sensitive
  - Moderately Sensitive

Prepared for:  
Western Cape -  
Department of Infrastructure:  
Transport Infrastructure Branch



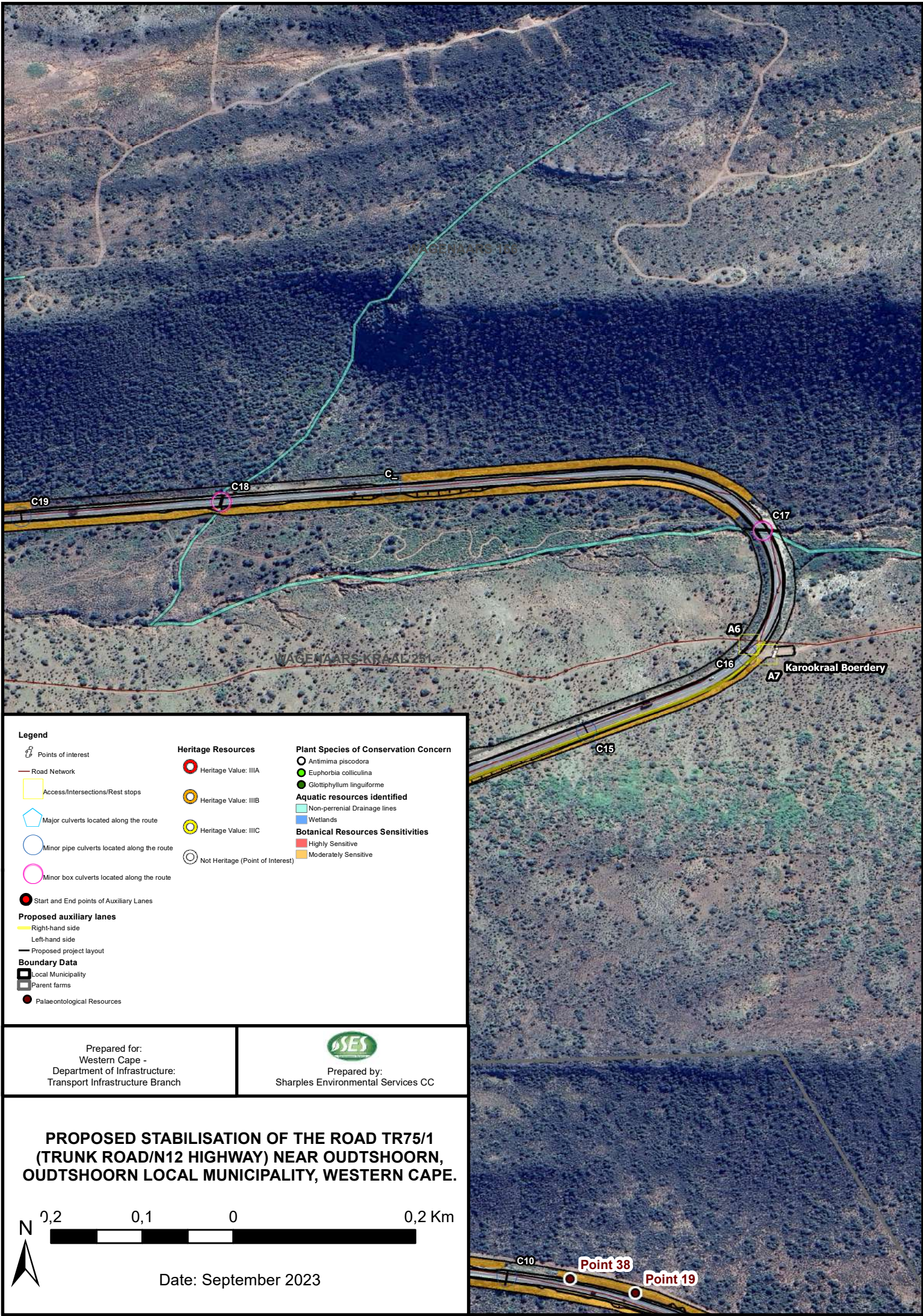
Prepared by:  
Sharples Environmental Services CC

**PROPOSED STABILISATION OF THE ROAD TR75/1  
(TRUNK ROAD/N12 HIGHWAY) NEAR OUDTSHOORN,  
OUDTSHOORN LOCAL MUNICIPALITY, WESTERN CAPE.**



Date: September 2023





**Legend**

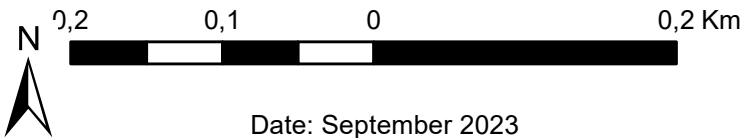
- Points of Interest
- Road Network
- Access/Intersections/Rest stops
- Major culverts located along the route
- Minor pipe culverts located along the route
- Minor box culverts located along the route
- Start and End points of Auxiliary Lanes
- Proposed auxiliary lanes**
  - Right-hand side
  - Left-hand side
  - Proposed project layout
- Boundary Data**
  - Local Municipality
  - Parent farms
  - Palaeontological Resources
- Heritage Resources**
  - Heritage Value: IIIA
  - Heritage Value: IIIB
  - Heritage Value: IIC
  - Not Heritage (Point of Interest)
- Plant Species of Conservation Concern**
  - Antimima piscodora
  - Euphorbia colliculina
  - Glottiphyllum linguiforme
- Aquatic resources identified**
  - Non-perennial Drainage lines
  - Wetlands
- Botanical Resources Sensitivities**
  - Highly Sensitive
  - Moderately Sensitive

Prepared for:  
Western Cape -  
Department of Infrastructure:  
Transport Infrastructure Branch



Prepared by:  
Sharples Environmental Services CC

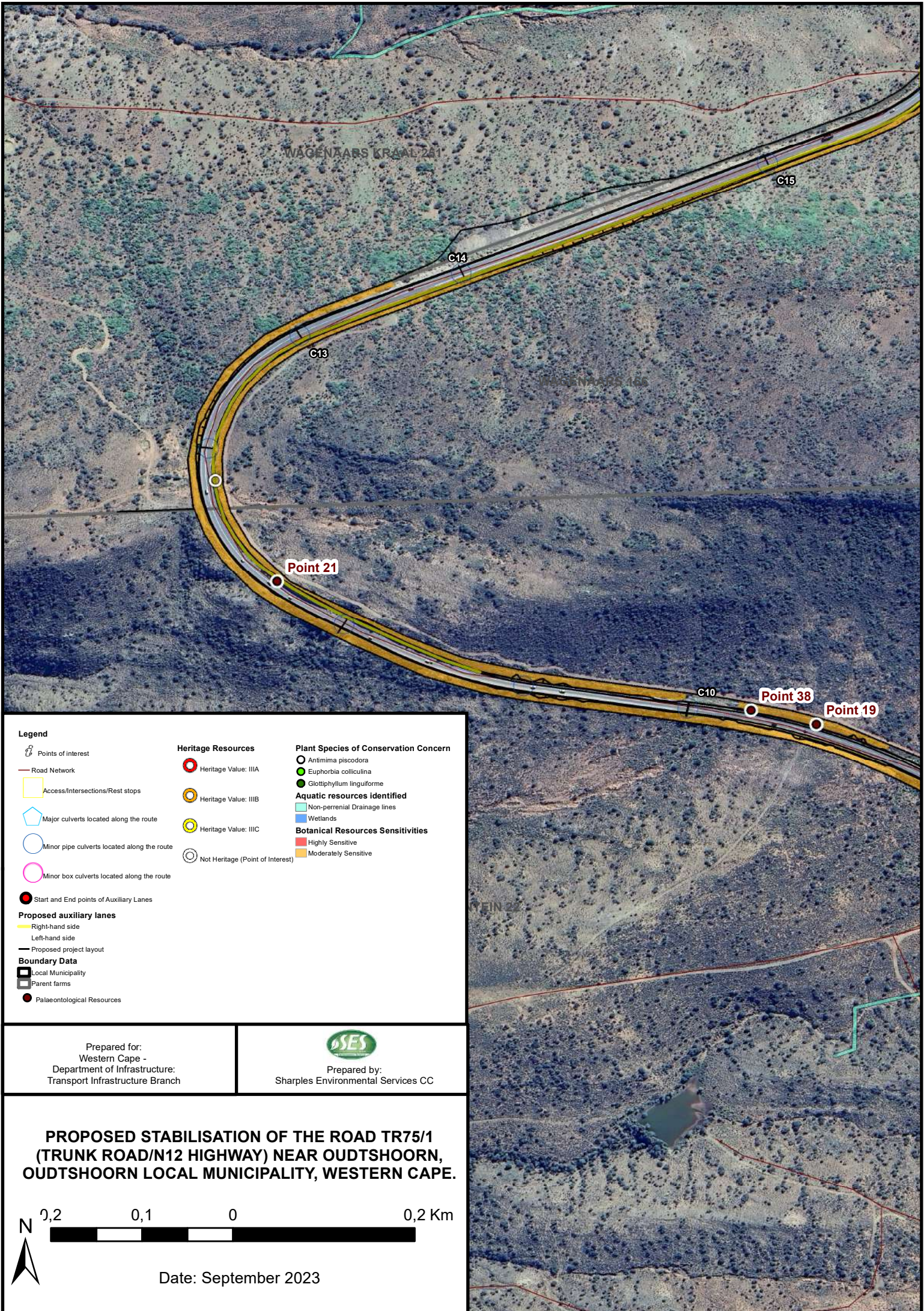
**PROPOSED STABILISATION OF THE ROAD TR75/1  
(TRUNK ROAD/N12 HIGHWAY) NEAR OUDTSHOORN,  
OUDTSHOORN LOCAL MUNICIPALITY, WESTERN CAPE.**



Date: September 2023

C10 Point 38 Point 19





WAGENAARS KRAAL 241

C15

C14

C13

Point 21

C10

Point 38

Point 19

**Legend**

- Points of Interest
- Road Network
- Access/Intersections/Rest stops
- Major culverts located along the route
- Minor pipe culverts located along the route
- Minor box culverts located along the route
- Start and End points of Auxiliary Lanes
- Proposed auxiliary lanes**
- Right-hand side
- Left-hand side
- Proposed project layout
- Boundary Data**
- Local Municipality
- Parent farms
- Palaeontological Resources

**Heritage Resources**

- Heritage Value: IIIA
- Heritage Value: IIIB
- Heritage Value: IIIC
- Not Heritage (Point of Interest)

**Plant Species of Conservation Concern**

- Antimima piscodora
- Euphorbia colliculina
- Glottiphyllum linguiforme

**Aquatic resources identified**

- Non-perennial Drainage lines
- Wetlands

**Botanical Resources Sensitivities**

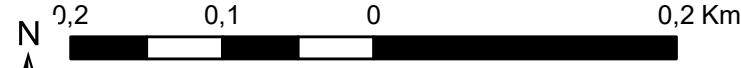
- Highly Sensitive
- Moderately Sensitive

Prepared for:  
Western Cape -  
Department of Infrastructure:  
Transport Infrastructure Branch



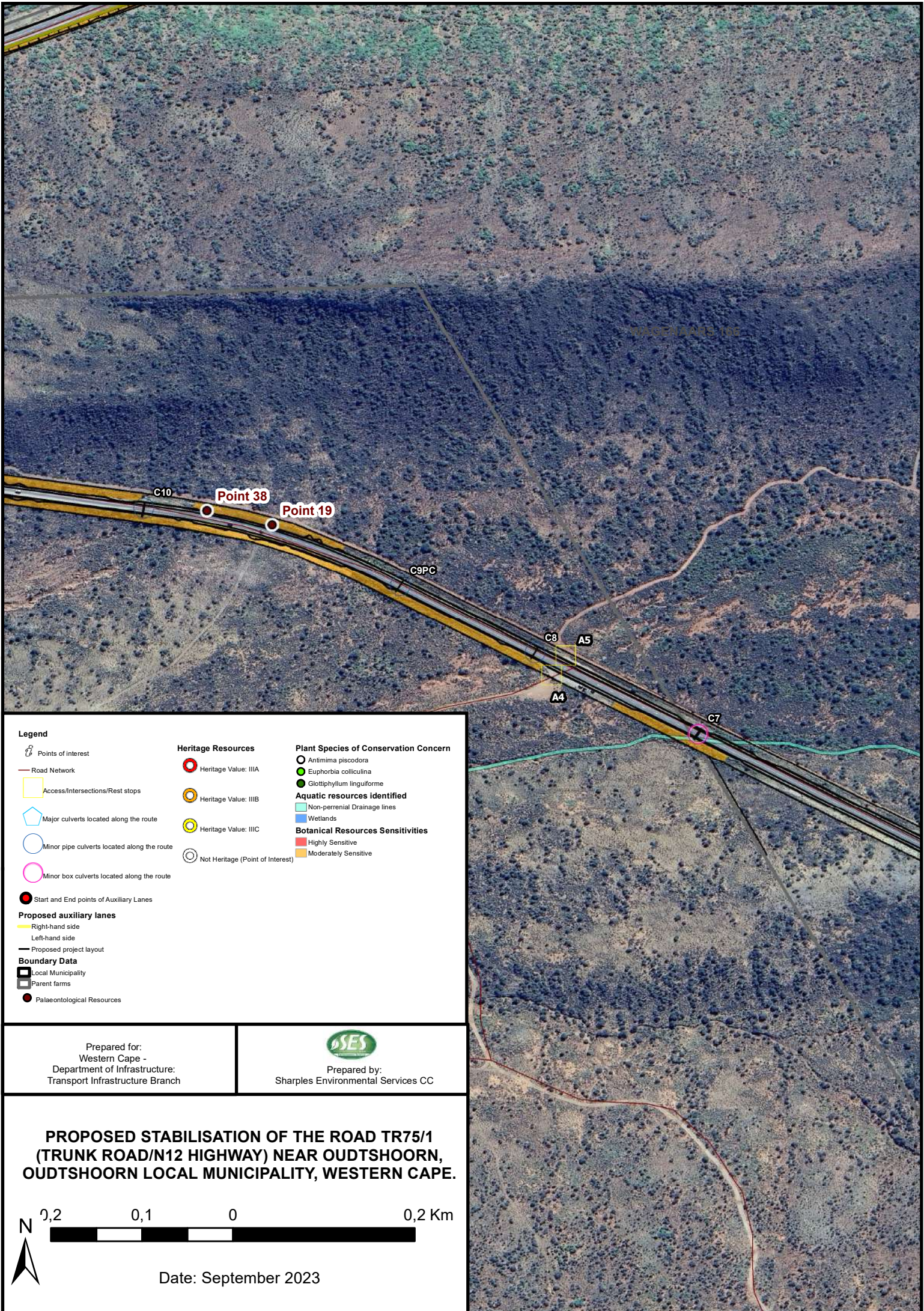
Prepared by:  
Sharples Environmental Services CC

**PROPOSED STABILISATION OF THE ROAD TR75/1  
(TRUNK ROAD/N12 HIGHWAY) NEAR OUDTSHOORN,  
OUDTSHOORN LOCAL MUNICIPALITY, WESTERN CAPE.**



Date: September 2023





**Legend**

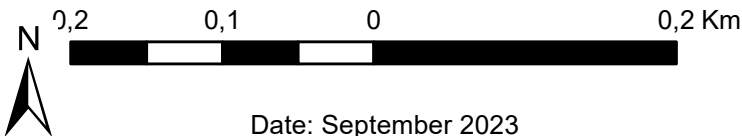
- Points of interest
- Road Network
- Access/Intersections/Rest stops
- Major culverts located along the route
- Minor pipe culverts located along the route
- Minor box culverts located along the route
- Start and End points of Auxiliary Lanes
- Proposed auxiliary lanes**
  - Right-hand side
  - Left-hand side
  - Proposed project layout
- Boundary Data**
  - Local Municipality
  - Parent farms
  - Palaeontological Resources
- Heritage Resources**
  - Heritage Value: IIIA
  - Heritage Value: IIIB
  - Heritage Value: IIIC
  - Not Heritage (Point of Interest)
- Plant Species of Conservation Concern**
  - Antimima piscodora
  - Euphorbia colliculina
  - Glottiphyllum linguiforme
- Aquatic resources identified**
  - Non-perennial Drainage lines
  - Wetlands
- Botanical Resources Sensitivities**
  - Highly Sensitive
  - Moderately Sensitive

Prepared for:  
Western Cape -  
Department of Infrastructure:  
Transport Infrastructure Branch



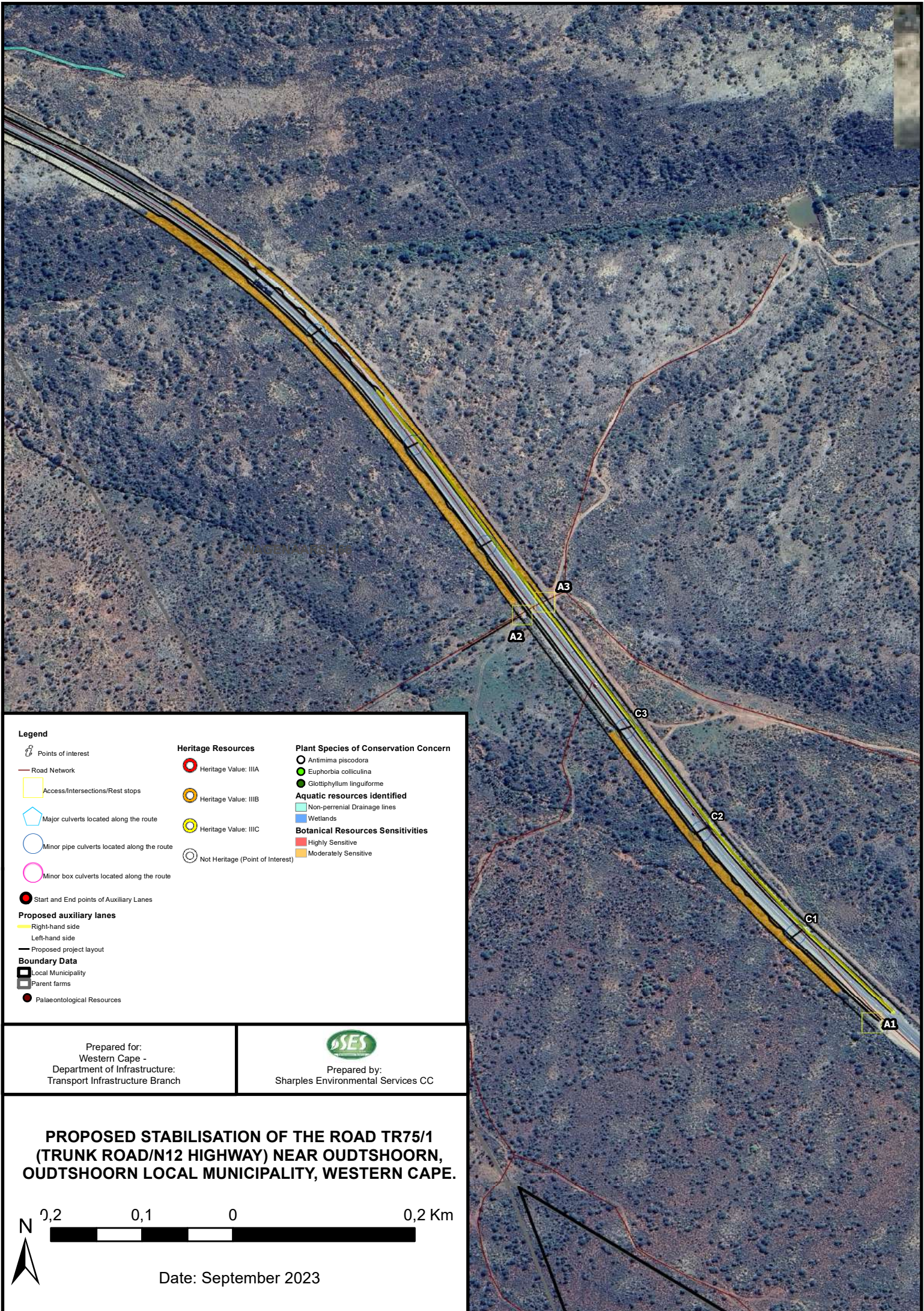
Prepared by:  
Sharples Environmental Services CC

**PROPOSED STABILISATION OF THE ROAD TR75/1  
(TRUNK ROAD/N12 HIGHWAY) NEAR OUDTSHOORN,  
OUDTSHOORN LOCAL MUNICIPALITY, WESTERN CAPE.**



Date: September 2023





**Legend**

- Points of Interest
- Road Network
- Access/Intersections/Rest stops
- Major culverts located along the route
- Minor pipe culverts located along the route
- Minor box culverts located along the route
- Start and End points of Auxiliary Lanes

**Proposed auxiliary lanes**

- Right-hand side
- Left-hand side
- Proposed project layout

**Boundary Data**

- Local Municipality
- Parent farms
- Palaeontological Resources

**Heritage Resources**

- Heritage Value: IIIA
- Heritage Value: IIIB
- Heritage Value: IIIC
- Not Heritage (Point of Interest)

**Plant Species of Conservation Concern**

- Antimima piscodora
- Euphorbia colliculina
- Glottiphyllum linguiforme

**Aquatic resources identified**

- Non-perennial Drainage lines
- Wetlands

**Botanical Resources Sensitivities**

- Highly Sensitive
- Moderately Sensitive


Prepared for:  
Western Cape -  
Department of Infrastructure:  
Transport Infrastructure Branch



Prepared by:  
Sharples Environmental Services CC

**PROPOSED STABILISATION OF THE ROAD TR75/1  
(TRUNK ROAD/N12 HIGHWAY) NEAR OUDTSHOORN,  
OUDTSHOORN LOCAL MUNICIPALITY, WESTERN CAPE.**

0,2      0,1      0      0,2 Km



Date: September 2023