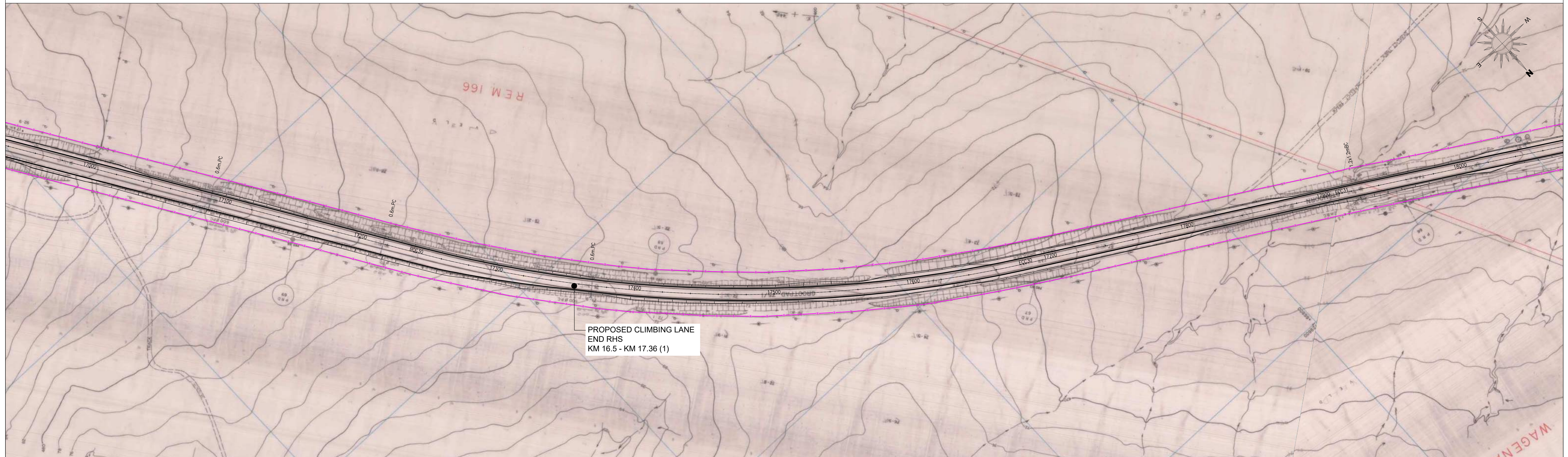


TR75-1 LAYOUT KM 16-17



TR75-1 LAYOUT KM 17-18

NO.	DATE	ADDITIONS AND AMENDMENTS	APPROVED CONS.	PRE MH	DESIGNED BY:	A SAUER
A	30/11/2022	CONCEPT & VIABILITY	PB	MH	DRAWN BY:	A SAUER
					CHECKED BY:	AG SMITH
					APPROVED BY:	P BARKHUIZEN



CONSULTING ENGINEERS
DATE _____

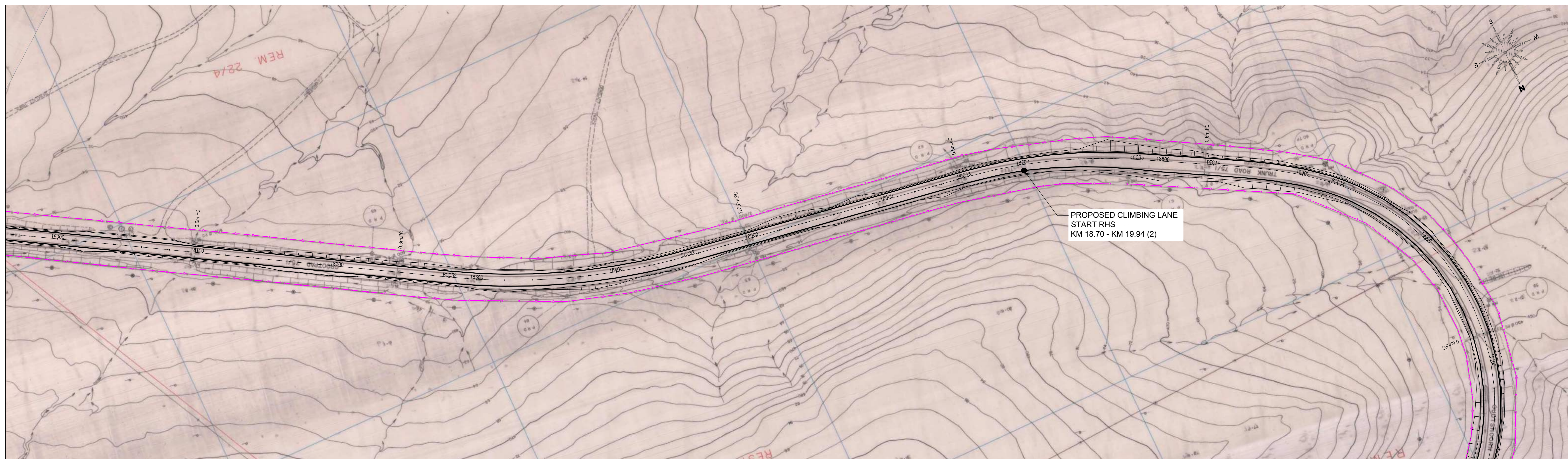


APPROVED
THIS APPROVAL IS FOR PROCEDURAL AND ADMINISTRATIVE REVIEW PURPOSES ONLY AND DOES NOT ATTRACT LEGAL LIABILITY OF ANY KIND FROM WHATSOEVER CAUSE OR HOWEVER ARISING
PROVINCIAL ROADS ENGINEER
DATE _____

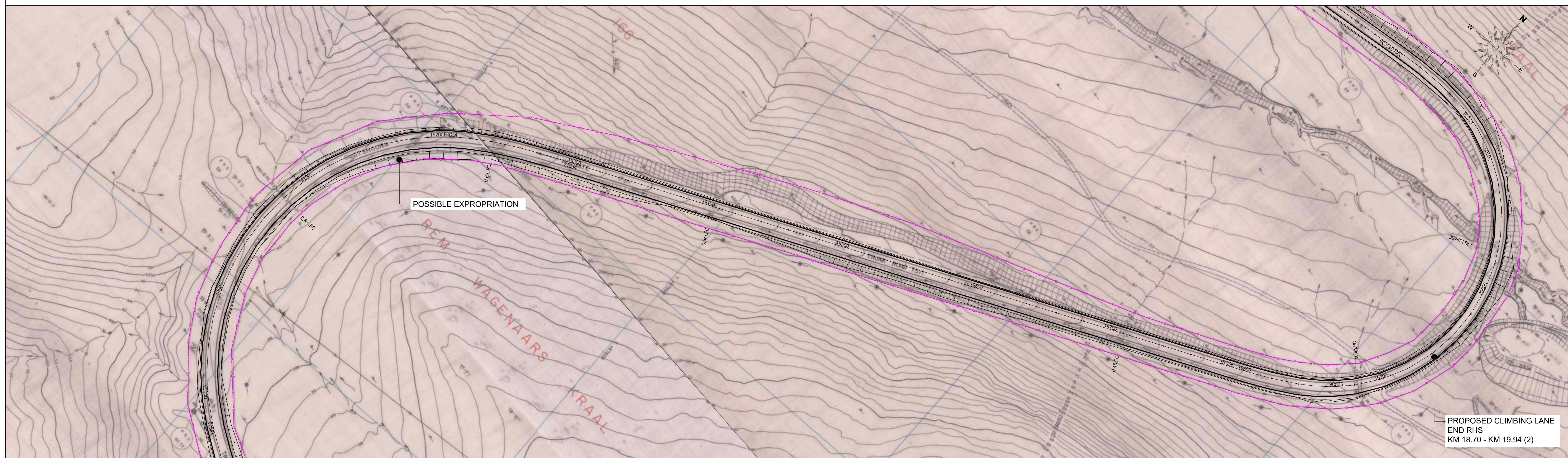
CONTRACT NO C1117: PAVEMENT STRENGTHENING OF TR75/1
(KM 16.50 TO KM 31.22) NEAR OUDTSHOORN

CLASS 3: LAYOUT KM 16.00 - KM 18.00

		SCALE 1:1000
P.R.E.'s FILE No. TPW 16/6/4/1/5 - TR7501 - C1117	WCG STRUCTURE PLAN	
C1117	WCG INDEX No.	VER A
CONSULTANTS DWG No. 15675R-02-01		



TR75-1 LAYOUT KM 18-19



TR75-1 LAYOUT KM 19-20

NO.	DATE	ADDITIONS AND AMENDMENTS	APPROVED CONS.	PRE	DESIGNED BY:	A SAUER
A	30/11/2022	CONCEPT & VIABILITY	PB	MH	DRAWN BY:	A SAUER
					CHECKED BY:	AG SMITH
					APPROVED BY:	P BARKHUIZEN



CONSULTING ENGINEERS
DATE

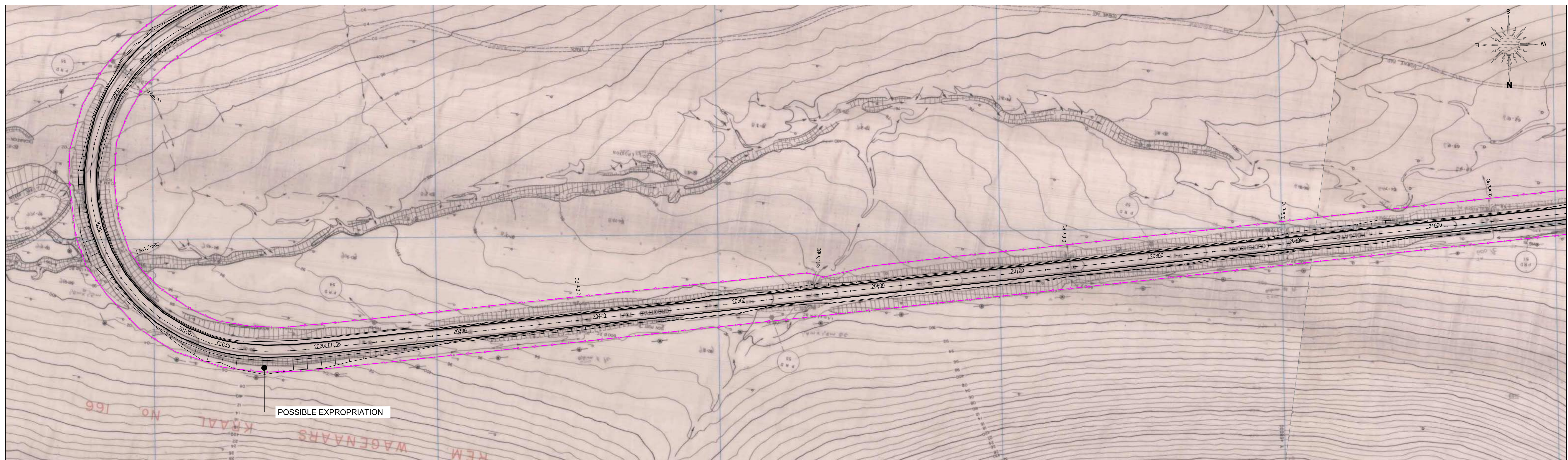


APPROVED
THIS APPROVAL IS FOR PROCEDURAL AND ADMINISTRATIVE REVIEW PURPOSES ONLY AND DOES NOT ATTRACT LEGAL LIABILITY OF ANY KIND FROM WHATSOEVER CAUSE OR HOWEVER ARISING
PROVINCIAL ROADS ENGINEER
DATE

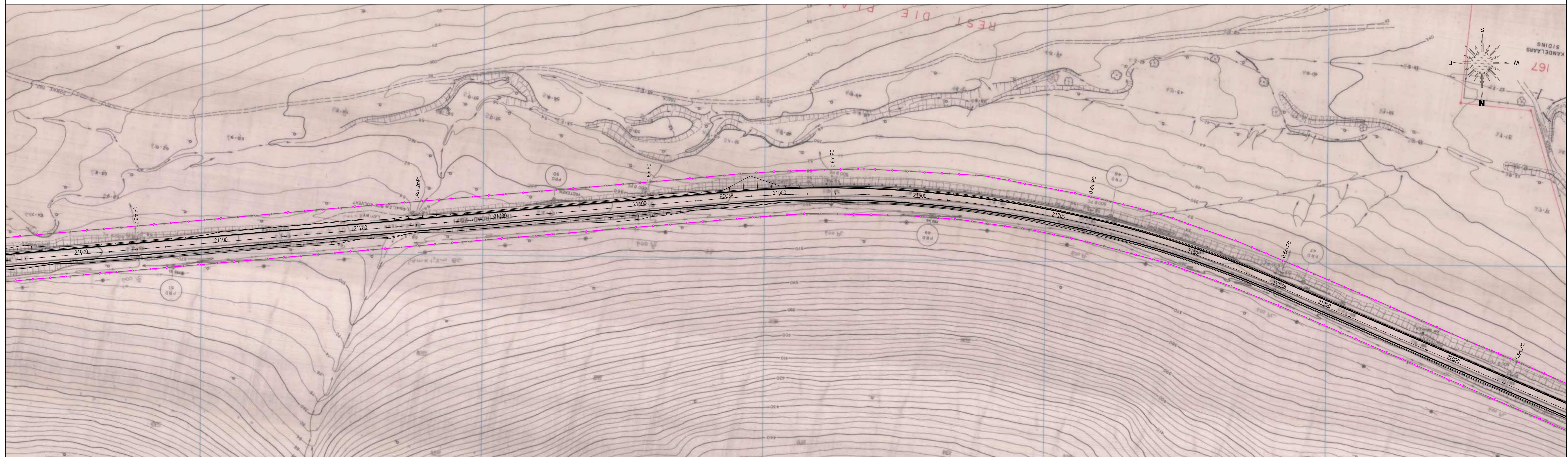
CONTRACT NO C1117: PAVEMENT STRENGTHENING OF TR75/1 (KM 16.50 TO KM 31.22) NEAR OUDTSHOORN

CLASS 3: LAYOUT KM 18.00 - KM 20.00

		SCALE	1:1000
P.R.E.'s FILE No. TPW 16/6/4/1/5 - TR7501 - C1117 CONTRACT No.		WCG STRUCTURE PLAN	
C1117		WCG INDEX No.	VER
CONSULTANTS DWG No. 15675R-02-02			A



TR75-1 LAYOUT KM 20-21



TR75-1 LAYOUT KM 21-22

NO.	DATE	ADDITIONS AND AMENDMENTS	APPROVED CONS.	PRE MH	DESIGNED BY:	A SAUER
A	30/11/2022	CONCEPT & VIABILITY	PB	MH	DRAWN BY:	A SAUER
					CHECKED BY:	AG SMITH
					APPROVED BY:	P BARKHUIZEN



CONSULTING ENGINEERS
DATE

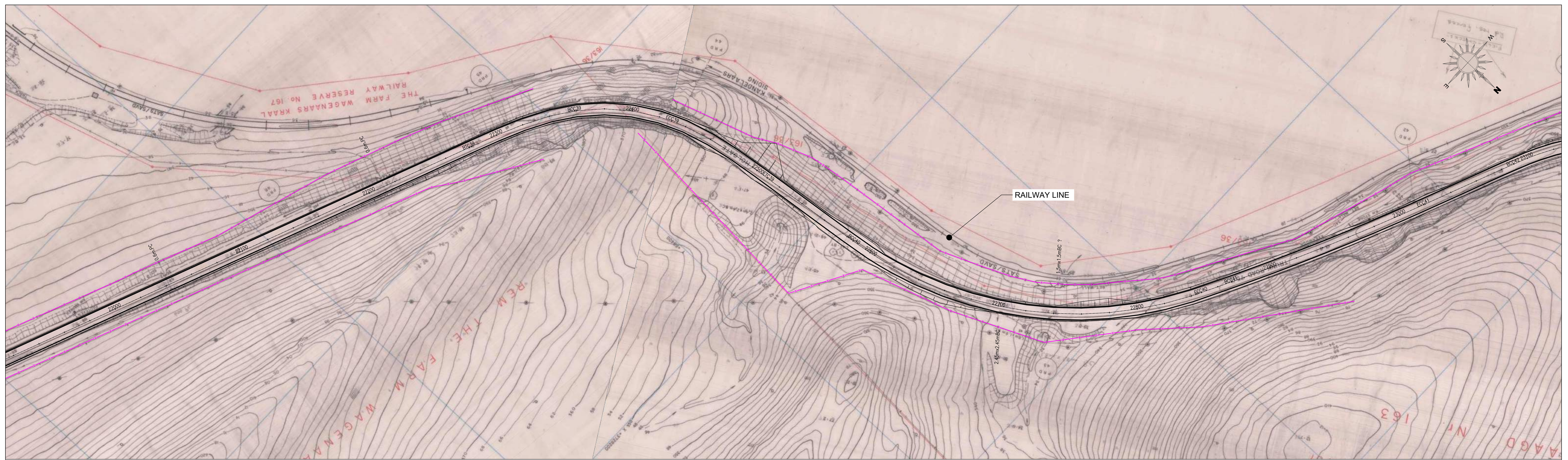


APPROVED
THIS APPROVAL IS FOR PROCEDURAL AND ADMINISTRATIVE REVIEW PURPOSES ONLY AND DOES NOT ATTRACT LEGAL LIABILITY OF ANY KIND FROM WHATSOEVER CAUSE OR HOWEVER ARISING
PROVINCIAL ROADS ENGINEER
DATE

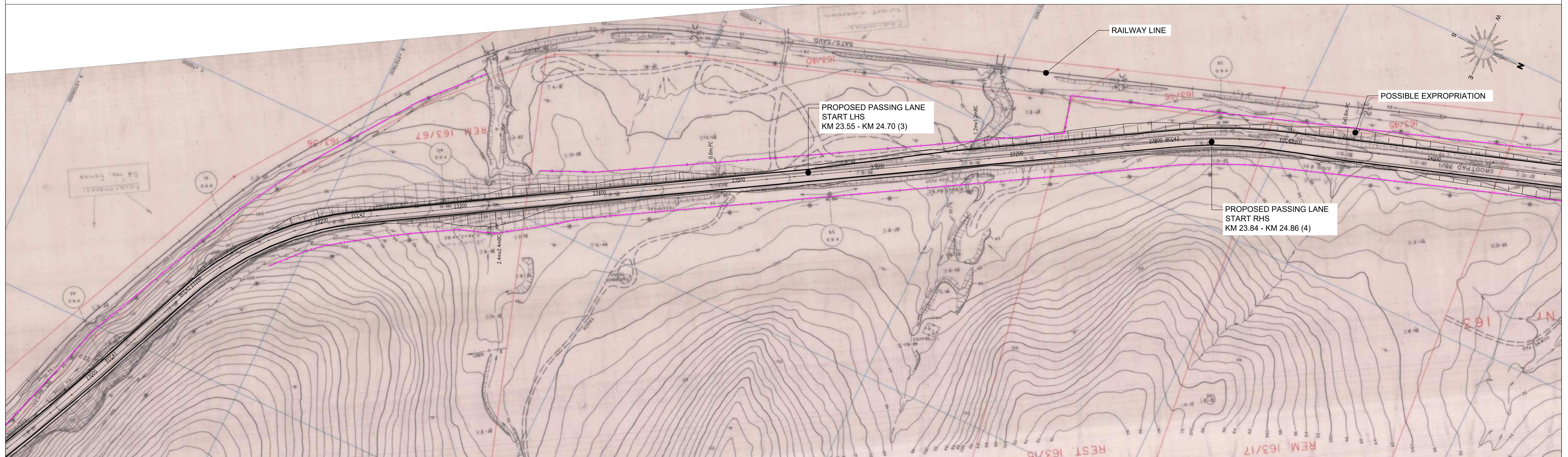
CONTRACT NO C1117: PAVEMENT STRENGTHENING OF TR75/1
(KM 16.50 TO KM 31.22) NEAR OUDTSHOORN

CLASS 3: LAYOUT KM 20.00 - KM 22.00

		SCALE 1:1000
P.R.E.'s FILE No. TPW 16/6/4/1/5 - TR7501 - C1117	WCG STRUCTURE PLAN	
CONTRACT No. C1117	WCG INDEX No.	VER A
CONSULTANTS DWG No. 15675R-02-03		



TR75-1 LAYOUT KM 22-23



TR75-1 LAYOUT KM 23-24

NO.	DATE	ADDITIONS AND AMENDMENTS	APPROVED CONS.	PRE	DESIGNED BY:	A SAUER
A	30/11/2022	CONCEPT & VIABILITY	PB	MH	DRAWN BY:	A SAUER
					CHECKED BY:	AG SMITH
					APPROVED BY:	P BARKHUIZEN



CONSULTING ENGINEERS
DATE

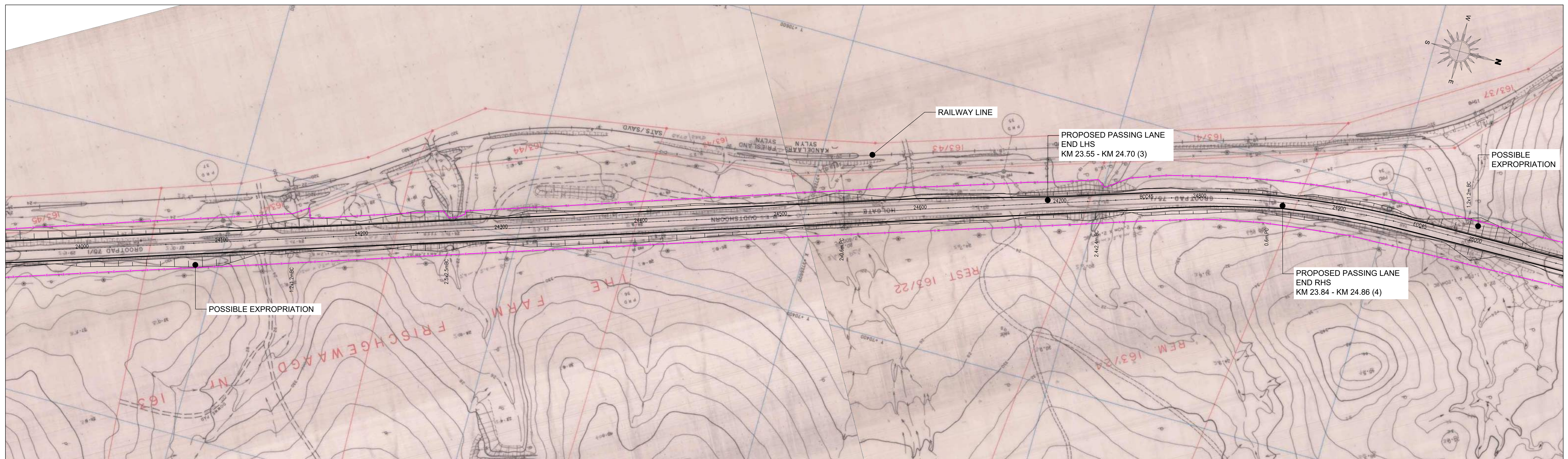


APPROVED
THIS APPROVAL IS FOR PROCEDURAL AND ADMINISTRATIVE REVIEW PURPOSES ONLY AND DOES NOT ATTRACT LEGAL LIABILITY OF ANY KIND FROM WHATSOEVER CAUSE OR HOWEVER ARISING
PROVINCIAL ROADS ENGINEER
DATE

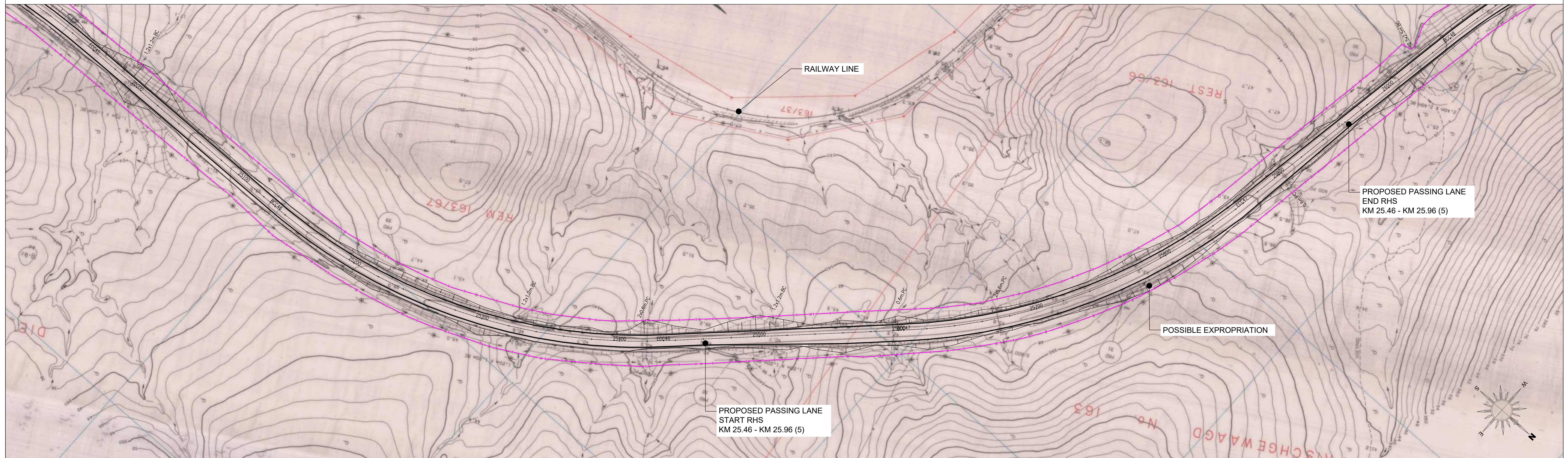
CONTRACT NO C1117: PAVEMENT STRENGTHENING OF TR75/1 (KM 16.50 TO KM 31.22) NEAR OUDTSHOORN

CLASS 3: LAYOUT KM 22.00 - KM 24.00

		SCALE	1:1000
P.R.E.'S FILE No. TPW 16/6/4/1/5 - TR7501 - C1117 CONTRACT No. C1117		WCG STRUCTURE PLAN WCG INDEX No. VER A	
CONSULTANTS DWG No. 15675R-02-04			



TR75-1 LAYOUT KM 24-25



TR75-1 LAYOUT KM 25-26

NO.	DATE	ADDITIONS AND AMENDMENTS	APPROVED CONS.	PRE MH	DESIGNED BY:	A SAUER
A	30/11/2022	CONCEPT & VIABILITY	PB	MH	DRAWN BY:	A SAUER
					CHECKED BY:	AG SMITH
					APPROVED BY:	P BARKHUIZEN



CONSULTING ENGINEERS
DATE

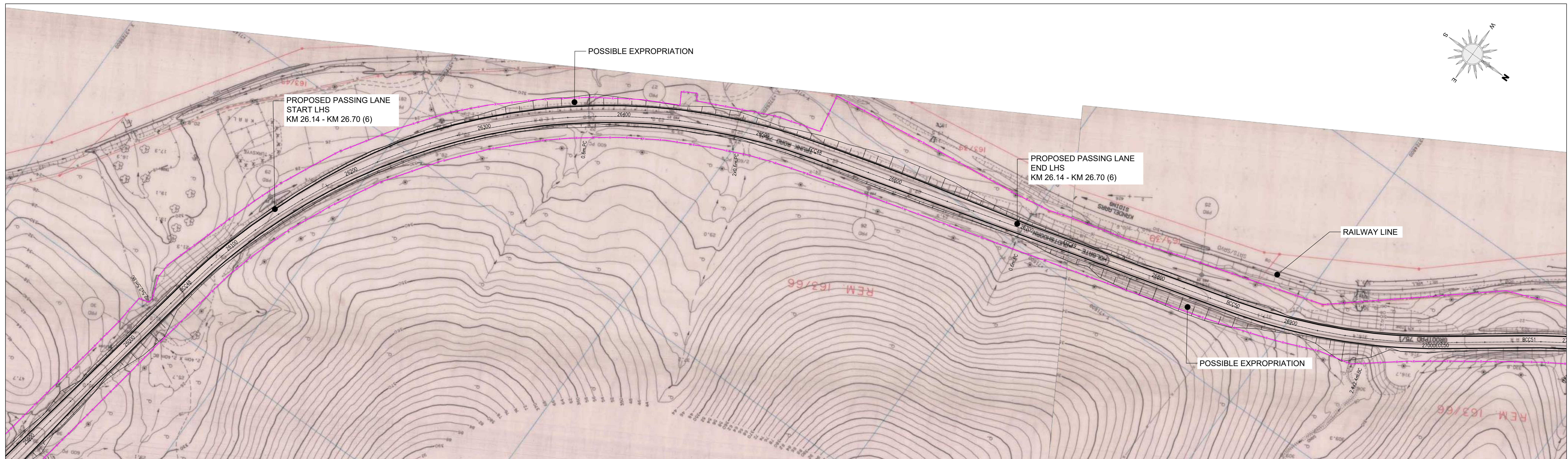


APPROVED
THIS APPROVAL IS FOR PROCEDURAL AND ADMINISTRATIVE REVIEW PURPOSES ONLY AND DOES NOT ATTRACT LEGAL LIABILITY OF ANY KIND FROM WHATSOEVER CAUSE OR HOWSOEVER ARISING
PROVINCIAL ROADS ENGINEER
DATE

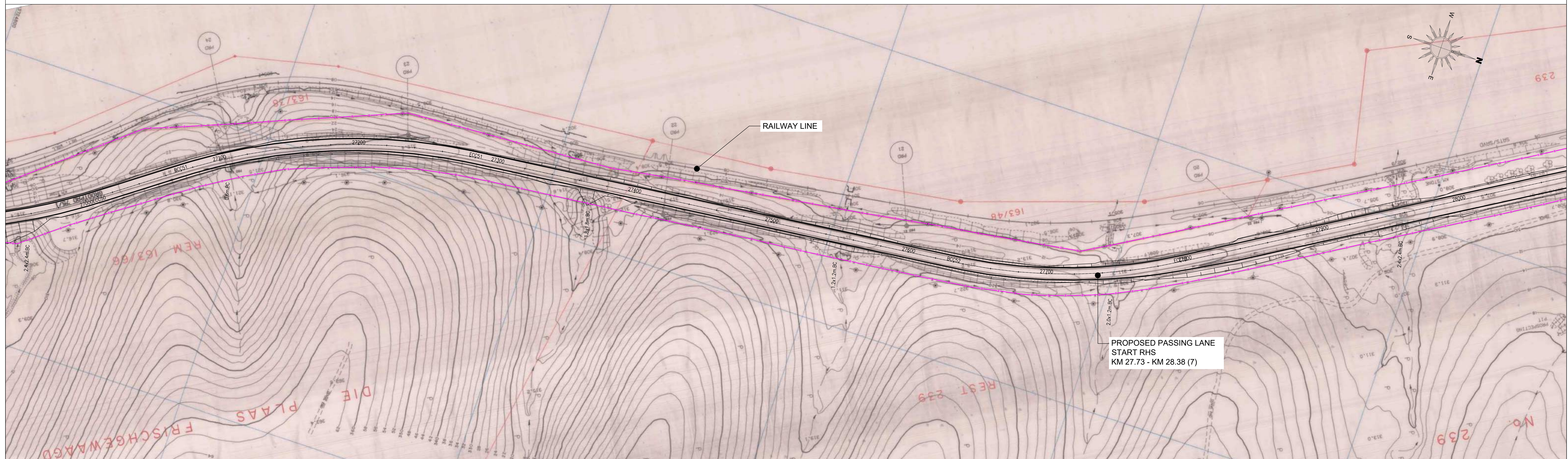
CONTRACT NO C1117: PAVEMENT STRENGTHENING OF TR75/1 (KM 16.50 TO KM 31.22) NEAR OUDTSHOORN

CLASS 3: LAYOUT KM 24.00 - KM 26.00

0mm 50mm 100mm 100mm at A0 size		SCALE 1:1000
P.R.E.'s FILE No. TPW 16/6/4/1/5 - TR7501 - C1117	WCG STRUCTURE PLAN	
C1117	WCG INDEX No.	VER A
CONSULTANTS DWG No. 15675R-02-05		



TR75-1 LAYOUT KM 26-27



TR75-1 LAYOUT KM 27-28

NO.	DATE	ADDITIONS AND AMENDMENTS	APPROVED CONS.	PRE	DESIGNED BY:	A SAUER
A	30/11/2022	CONCEPT & VIABILITY	PB	MH	DRAWN BY:	A SAUER
					CHECKED BY:	AG SMITH
					APPROVED BY:	P BARKHUIZEN



CONSULTING ENGINEERS
DATE

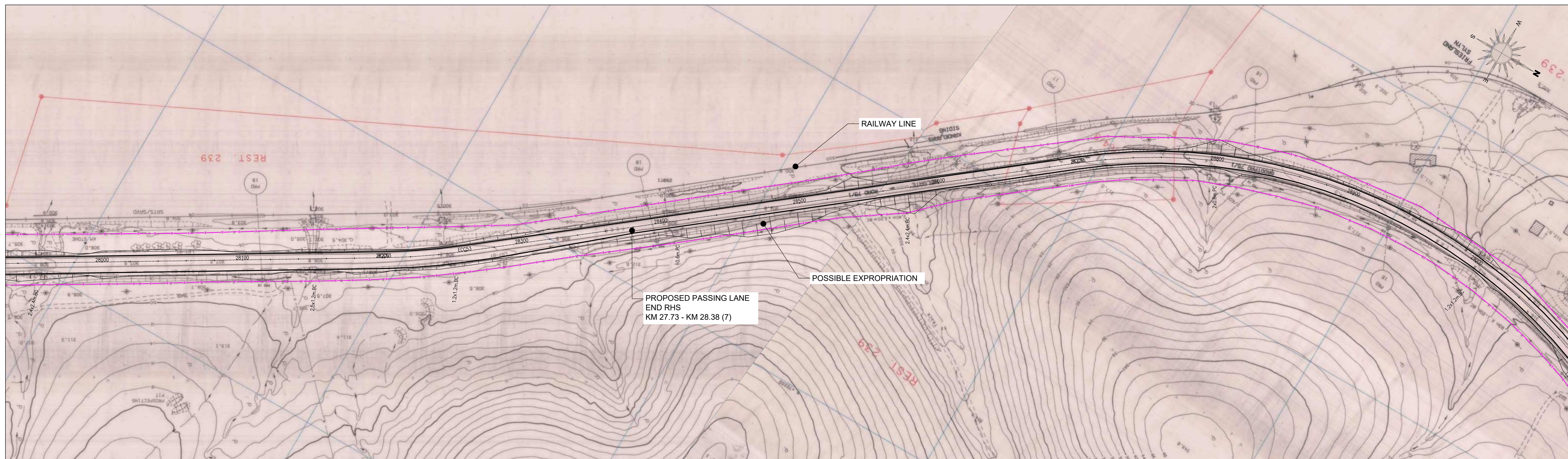


APPROVED
THIS APPROVAL IS FOR PROCEDURAL AND ADMINISTRATIVE REVIEW PURPOSES ONLY AND DOES NOT ATTRACT LEGAL LIABILITY OF ANY KIND FROM WHATSOEVER CAUSE OR HOWEVER ARISING
PROVINCIAL ROADS ENGINEER
DATE

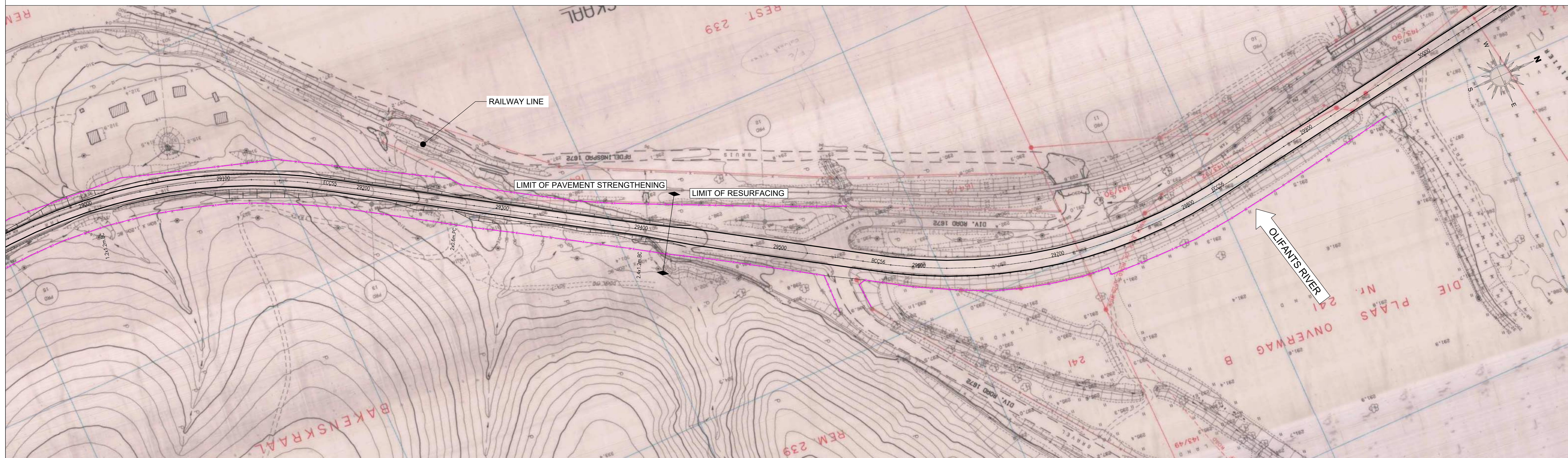
CONTRACT NO C1117: PAVEMENT STRENGTHENING OF TR75/1 (KM 16.50 TO KM 31.22) NEAR OUDTSHOORN

CLASS 3: LAYOUT KM 26.00 - KM 28.00

		SCALE	1:1000
P.R.E.'S FILE No. TPW 16/6/4/1/5 - TR7501 - C1117 CONTRACT No.		WCG STRUCTURE PLAN	
C1117		WCG INDEX No.	VER
CONSULTANTS DWG No. 15675R-02-06			A



TR75-1 LAYOUT KM 28-29



TR75-1 LAYOUT KM 29-30

NO.	DATE	ADDITIONS AND AMENDMENTS	APPROVED CONS.	PRE	DESIGNED BY:	A SAUER
A	30/11/2022	CONCEPT & VIABILITY	PB	MH	DRAWN BY:	A SAUER
					CHECKED BY:	AG SMITH
					APPROVED BY:	P BARKHUIZEN



CONSULTING ENGINEERS
DATE

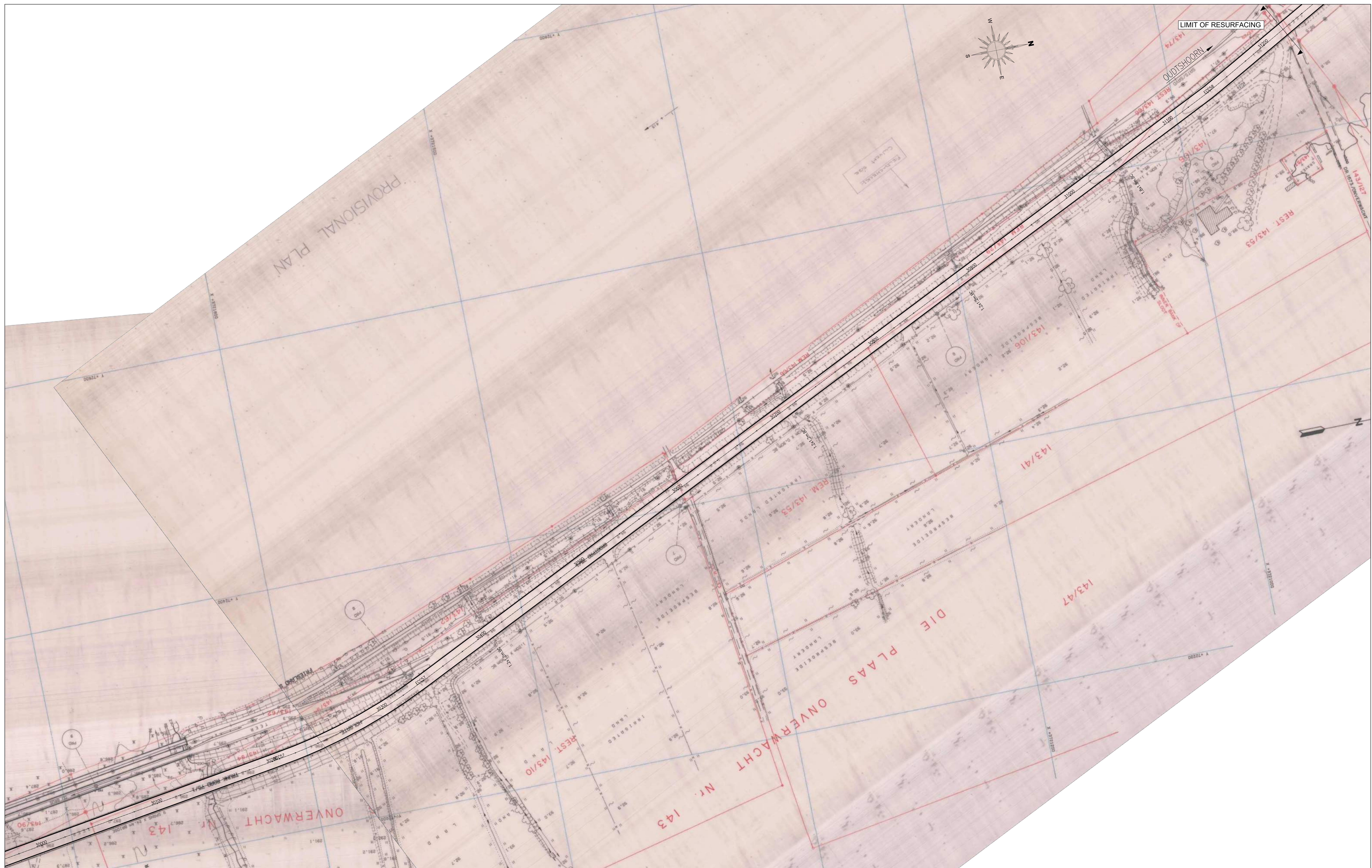


APPROVED
THIS APPROVAL IS FOR PROCEDURAL AND ADMINISTRATIVE REVIEW PURPOSES ONLY AND DOES NOT ATTRACT LEGAL LIABILITY OF ANY KIND FROM WHATSOEVER CAUSE OR HOWSOEVER ARISING
PROVINCIAL ROADS ENGINEER
DATE

CONTRACT NO C1117: PAVEMENT STRENGTHENING OF TR75/1 (KM 16.50 TO KM 31.22) NEAR OUDTSHOORN

CLASS 3: LAYOUT KM 28.00 - KM 30.00

		SCALE	1:1000
P.R.E.'s FILE No. TPW 16/6/4/1/5 - TR7501 - C1117 CONTRACT No.		WCG STRUCTURE PLAN C1117	
CONSULTANTS DWG No. 15675R-02-07		WCG INDEX No.	VER A



TR75-1 LAYOUT KM 30-31.22

NO.	DATE	ADDITIONS AND AMENDMENTS	APPROVED		DESIGNED BY:	A SAUER
			CONS.	PRE		
A	30/11/2022	CONCEPT & VIABILITY	PB	MH	DRAWN BY:	A SAUER
					CHECKED BY:	AG SMITH
					APPROVED BY:	P BARKHUIZEN



CONSULTING ENGINEERS
DATE



APPROVED
THIS APPROVAL IS FOR PROCEDURAL AND ADMINISTRATIVE REVIEW PURPOSES ONLY AND DOES NOT ATTRACT LEGAL LIABILITY OF ANY KIND FROM WHATSOEVER CAUSE OR HOWEVER ARISING
PROVINCIAL ROADS ENGINEER
DATE

CONTRACT NO C1117: PAVEMENT STRENGTHENING OF TR75/1 (KM 16.50 TO KM 31.22) NEAR OUDTSHOORN

CLASS 3: LAYOUT KM 30.00 - KM 31.22

		SCALE
P.R.E.'s FILE No. TPW 16/6/4/1/5 - TR7501 - C1117 CONTRACT No.		1:1000
C1117 CONSULTANTS DWG No. 15675R-02-08		WCG INDEX No. VER A