



GEORGE
 TEL: +27 (0) 44 873 4923 FAX: +27 (0) 44 874 5953
 EMAIL: info@sesc.net WEBSITE: www.sesc.net
 ADDRESS: Unit 17 Cathedral Square,
 Cathedral Street, George, 6530
 PO BOX: 9087, George, 6530

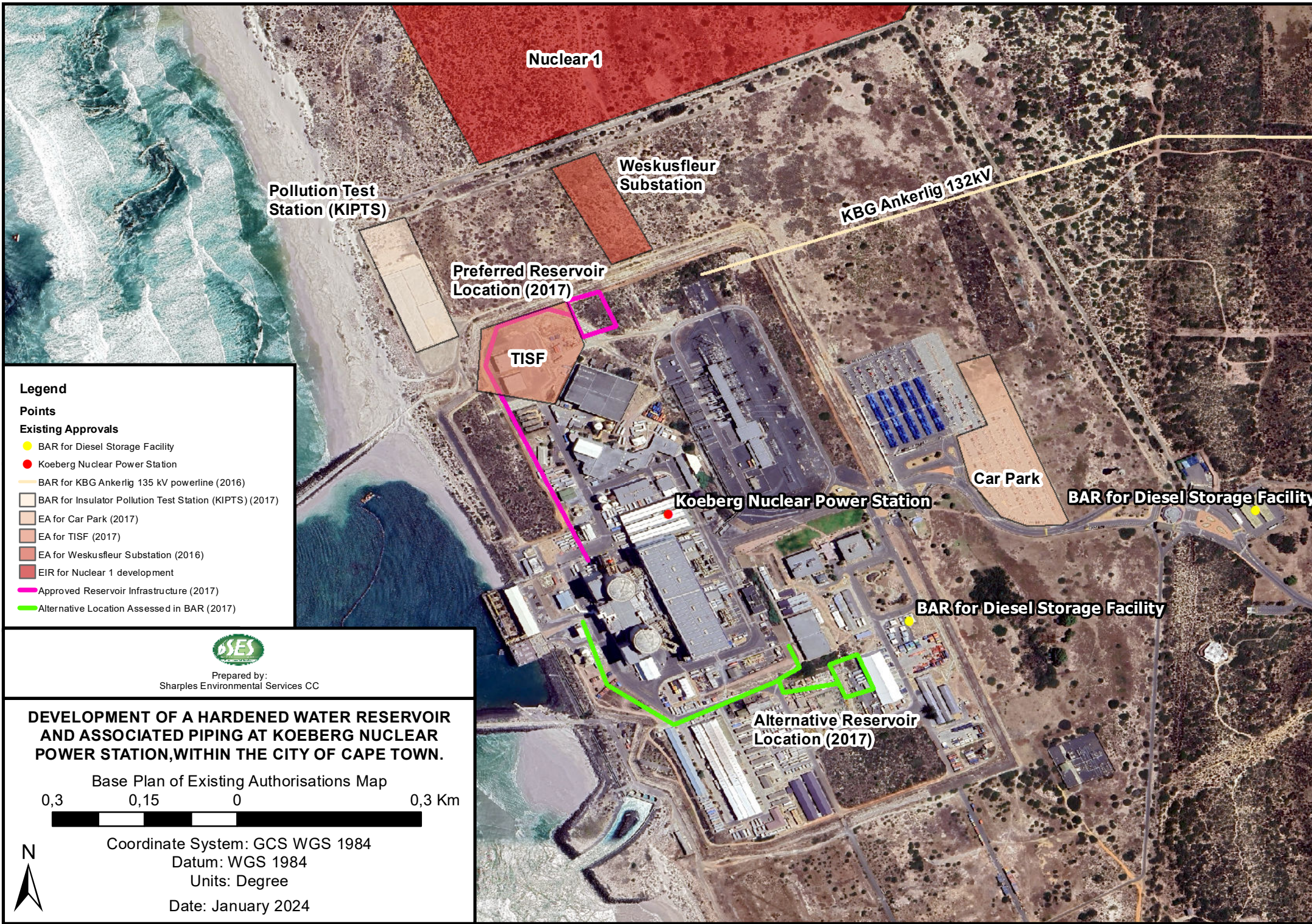
CAPE TOWN
 TEL: +27 (0) 21 554 5195 FAX: +27 (0) 86 575 2869
 EMAIL: betsy@sesc.net WEBSITE: www.sesc.net
 ADDRESS: Tableview, Cape Town, 7441
 PO BOX: 443, Milnerton, 7435

KOEBERG HARDWATER RESERVOIR AND ASSOCIATED INFRASTRUCTURE

Proposed development of a Hardened Water Reservoir and Associated Infrastructure at the Koeberg Nuclear Power Station. Located on the farm Duynfontyn no. 1552, Melkbosstrand, Western Cape, Cape Town Municipality.

Existing Approvals / Base Plan Map

Short name	Description	Date of process/authorisation
Nuclear 1	Scoping and EIAR undertaken; DEA Ref: 12/12/20/944	Approved in 2017
Pollution Test Station (KIPTS)	BAR undertaken	Approved in 2017
Weskusfleur Substation	Scoping and EIAR; DEA Ref: 14/12/16/3/3/2/508	Approved in 2016
TSIF	Scoping and EIAR undertaken; DEA Ref: 14/12/16/3/3/2/947	Approved in 2017
Preferred Reservoir Location (2017)	BAR undertaken: DEA Ref: 14/12/16/3/3/1/1759	Approved in 2017
Alternative Reservoir Location (2017)		
Diesel Storage Facility	BAR undertaken; DEA Ref: 14/12/6/3/3/1/1736	Approved in 2017
KBG Ankerlig 132kV	Scoping and EIAR undertaken; DEA Ref: 14/12/16/3/3/1/1182	Approved in 2015
Car Park	BAR undertaken; DEA Ref: 14/12/16/3/3/1/1687	Approved in 2017



Legend

Points

Existing Approvals

- BAR for Diesel Storage Facility
- Koeberg Nuclear Power Station
- BAR for KBG Ankerlig 135 kV powerline (2016)
- BAR for Insulator Pollution Test Station (KIPTS) (2017)
- EA for Car Park (2017)
- EA for TISF (2017)
- EA for Weskusfleur Substation (2016)
- EIR for Nuclear 1 development
- Approved Reservoir Infrastructure (2017)
- Alternative Location Assessed in BAR (2017)



Prepared by:
Sharples Environmental Services CC

DEVELOPMENT OF A HARDENED WATER RESERVOIR AND ASSOCIATED PIPING AT KOEBERG NUCLEAR POWER STATION, WITHIN THE CITY OF CAPE TOWN.

Base Plan of Existing Authorisations Map

0,3 0,15 0 0,3 Km



Coordinate System: GCS WGS 1984

Datum: WGS 1984

Units: Degree

Date: January 2024