

**SCREENING REPORT FOR AN ENVIRONMENTAL AUTHORIZATION AS
REQUIRED BY THE 2014 EIA REGULATIONS – PROPOSED SITE
ENVIRONMENTAL SENSITIVITY**

EIA Reference number: -

Project name: Van Riebeeck Gardens

Project title: Camfersdrift River

Date screening report generated: 25/07/2023 10:43:06

Applicant: George Municipality

Compiler: SES cc

Compiler signature:
.....

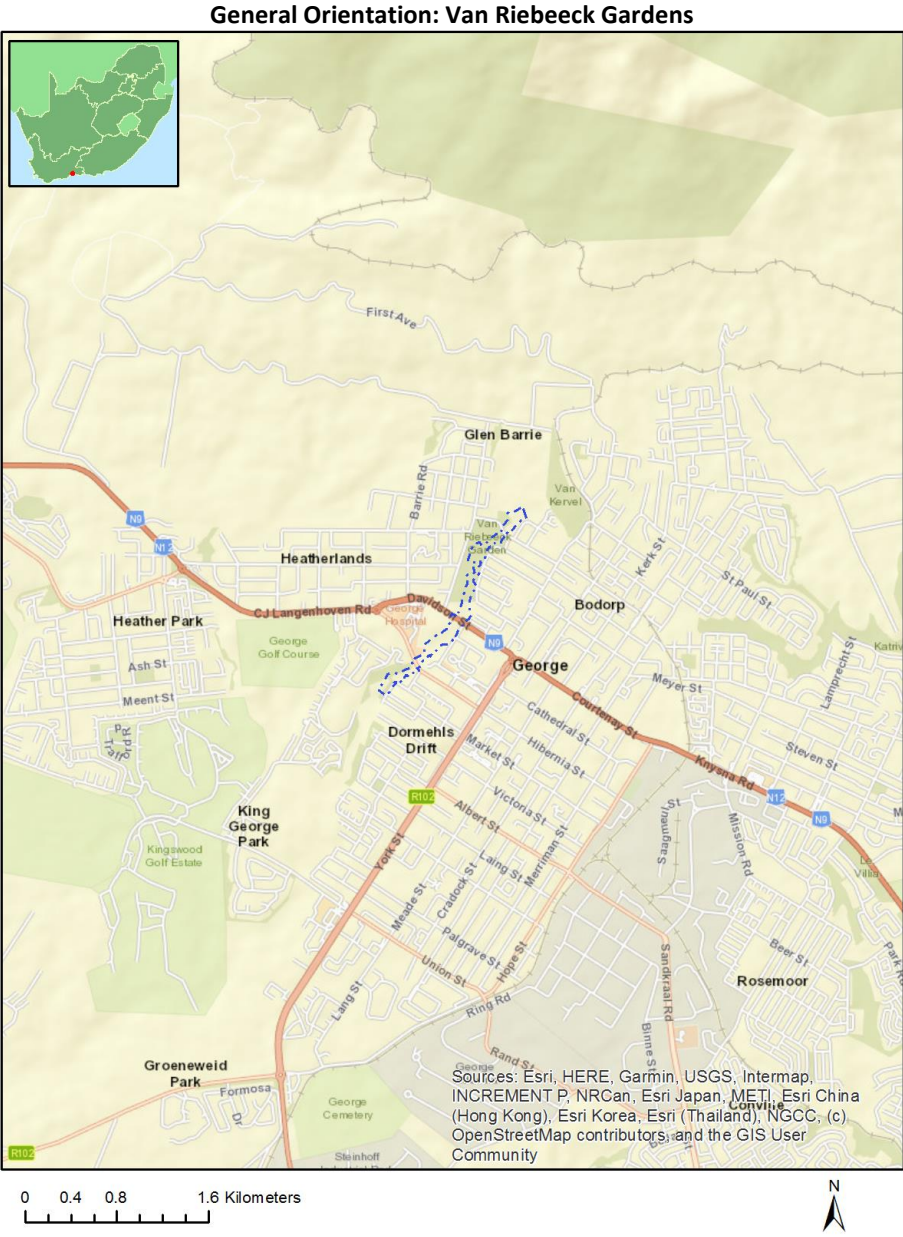
Application Category: Any activities within or close to a watercourse

Table of Contents

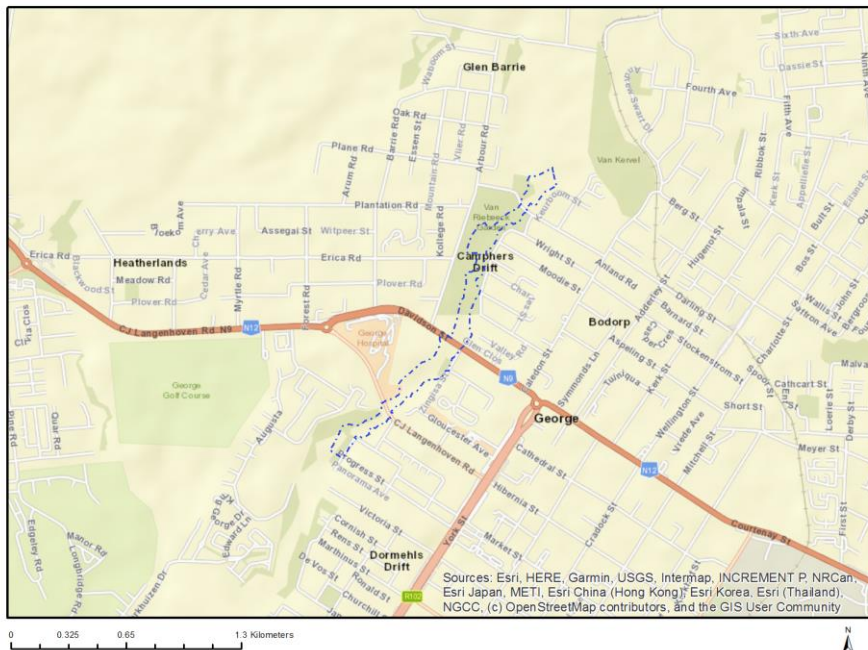
Proposed Project Location	3
Orientation map 1: General location	3
Map of proposed site and relevant area(s)	4
Cadastral details of the proposed site	4
Wind and Solar developments with an approved Environmental Authorisation or applications under consideration within 30 km of the proposed area	5
Environmental Management Frameworks relevant to the application	5
Environmental screening results and assessment outcomes	5
Relevant development incentives, restrictions, exclusions or prohibitions	6
Proposed Development Area Environmental Sensitivity	6
Specialist assessments identified	6
Results of the environmental sensitivity of the proposed area	8
MAP OF RELATIVE AGRICULTURE THEME SENSITIVITY	8
MAP OF RELATIVE ANIMAL SPECIES THEME SENSITIVITY	9
MAP OF RELATIVE AQUATIC BIODIVERSITY THEME SENSITIVITY	10
MAP OF RELATIVE ARCHAEOLOGICAL AND CULTURAL HERITAGE THEME SENSITIVITY	11
MAP OF RELATIVE CIVIL AVIATION THEME SENSITIVITY	12
MAP OF RELATIVE DEFENCE THEME SENSITIVITY	13
MAP OF RELATIVE PALEONTOLOGY THEME SENSITIVITY	14
MAP OF RELATIVE PLANT SPECIES THEME SENSITIVITY	15
MAP OF RELATIVE TERRESTRIAL BIODIVERSITY THEME SENSITIVITY	16

Proposed Project Location

Orientation map 1: General location



Map of proposed site and relevant area(s)



Cadastral details of the proposed site

Property details:

No	Farm Name	Farm/ Erf No	Portion	Latitude	Longitude	Property Type
1	GEORGE	464	0	33°57'12.66S	22°27'16.98E	Erven
2	GEORGE	659	0	33°57'13.54S	22°27'11.61E	Erven
3	GEORGE	738	0	33°57'0.33S	22°27'24.19E	Erven
4	GEORGE	3919	0	33°57'0.58S	22°27'22.45E	Erven
5	GEORGE	464	0	33°57'12.82S	22°26'32.89E	Erven
6	GEORGE	6231	0	33°57'14.34S	22°27'7.64E	Erven
7	GEORGE	221	0	33°56'45.12S	22°27'40.82E	Erven
8	GEORGE	290	0	33°56'12.32S	22°27'39.6E	Erven
9	GEORGE	464	0	33°57'12.12S	22°26'32.9E	Erven
10	GEORGE	658	0	33°57'10.32S	22°27'14.57E	Erven
11	GEORGE	669	0	33°57'22.33S	22°27'5.41E	Erven
12	GEORGE	194	0	33°56'55.92S	22°27'26.1E	Erven
13	GEORGE	3920	0	33°57'1.46S	22°27'22E	Erven
14	GEORGE	3366	0	33°56'56.98S	22°27'24.47E	Erven
15	GEORGE	3215	0	33°56'53.53S	22°27'28.6E	Erven
16	GEORGE	4311	0	33°57'9.29S	22°27'20.23E	Erven
17	GEORGE	3254	0	33°57'12.21S	22°27'18.1E	Erven
18	GEORGE	3444	0	33°56'58.64S	22°27'24.06E	Erven
19	GEORGE	8529	0	33°56'58.38S	22°27'23.8E	Erven
20	GEORGE	8560	0	33°56'51.47S	22°27'31.18E	Erven
21	GEORGE	8735	0	33°56'47.73S	22°27'35.99E	Erven
22	GEORGE	8945	0	33°57'6.48S	22°27'21.44E	Erven
23	GEORGE	4312	0	33°57'8.46S	22°27'21.68E	Erven
24	GEORGE	5812	0	33°56'50.38S	22°27'32.82E	Erven
25	GEORGE	5813	0	33°56'49.48S	22°27'33.58E	Erven
26	GEORGE	8562	0	33°56'52.7S	22°27'28.86E	Erven
27	GEORGE	5151	0	33°56'54.54S	22°27'26.41E	Erven
28	GEORGE	5814	0	33°56'48.62S	22°27'34.57E	Erven

29	GEORGE	8536	0	33°57'0.33S	22°27'23.5E	Erven
30	GEORGE	6237	0	33°57'15.07S	22°27'13.08E	Erven
31	GEORGE	7355	0	33°57'10.34S	22°27'19.5E	Erven
32	GEORGE	8118	0	33°57'2.12S	22°27'23.03E	Erven
33	GEORGE	8561	0	33°56'52.38S	22°27'30.63E	Erven
34	GEORGE	9701	0	33°56'53.26S	22°27'27.37E	Erven
35	GEORGE	15151	0	33°57'10.98S	22°27'20.72E	Erven
36	GEORGE	22474	0	33°56'36.07S	22°27'36.13E	Erven
37	GEORGE	19787	0	33°57'25.2S	22°27'2.66E	Erven
38	GEORGE	13405	0	33°57'5.02S	22°27'21.84E	Erven
39	GEORGE	20781	0	33°57'21.37S	22°27'8.23E	Erven
40	GEORGE	21721	0	33°57'23.27S	22°27'5.56E	Erven
41	GEORGE	8675	0	33°57'3.48S	22°27'22.17E	Public Place
42	GEORGE	8928	0	33°56'55.73S	22°27'25.31E	Public Place
43	GEORGE	4077	0	33°56'46.61S	22°27'31.06E	Public Place
44	GEORGE	6749	0	33°57'14.86S	22°27'15.93E	Public Place
45	GEORGE	8011	0	33°57'13.64S	22°27'16.94E	Public Place
46	GEORGE	20957	0	33°57'23.77S	22°26'57.09E	Public Place
47	GEORGE	1325	0	33°57'26.84S	22°26'57.82E	Public Place

Development footprint¹ vertices:
No development footprint(s) specified.

Wind and Solar developments with an approved Environmental Authorisation or applications under consideration within 30 km of the proposed area

No	EIA Reference No	Classification	Status of application	Distance from proposed area (km)
1	14/12/16/3/3/1/1292/AM1	Solar PV	Approved	8.9
2	14/12/16/3/3/1/1292	Solar PV	Approved	8.9

Environmental Management Frameworks relevant to the application

No intersections with EMF areas found.

Environmental screening results and assessment outcomes

The following sections contain a summary of any development incentives, restrictions, exclusions or prohibitions that apply to the proposed development site as well as the most environmental sensitive features on the site based on the site sensitivity screening results for the application classification that was selected. The application classification selected for this report is:

Any activities within or close to a watercourse.

¹ “development footprint”, means the area within the site on which the development will take place and includes all ancillary developments for example roads, power lines, boundary walls, paving etc. which require vegetation clearance or which will be disturbed and for which the application has been submitted.

Relevant development incentives, restrictions, exclusions or prohibitions

The following development incentives, restrictions, exclusions or prohibitions and their implications that apply to this site are indicated below.

Incentive, restriction or prohibition	Implication
Strategic Gas Pipeline Corridors-Phase 2: Mossel Bay to Coega	https://screening.environment.gov.za/ScreeningDownloads/DevelopmentZones/Combined_GAS.pdf
South African Conservation Areas	https://screening.environment.gov.za/ScreeningDownloads/DevelopmentZones/SACAD_OR_2023_Q1_Metadata.pdf

Proposed Development Area Environmental Sensitivity

The following summary of the development site environmental sensitivities is identified. Only the highest environmental sensitivity is indicated. The footprint environmental sensitivities for the proposed development footprint as identified, are indicative only and must be verified on site by a suitably qualified person before the specialist assessments identified below can be confirmed.

Theme	Very High sensitivity	High sensitivity	Medium sensitivity	Low sensitivity
Agriculture Theme		X		
Animal Species Theme		X		
Aquatic Biodiversity Theme	X			
Archaeological and Cultural Heritage Theme	X			
Civil Aviation Theme		X		
Defence Theme	X			
Paleontology Theme				X
Plant Species Theme			X	
Terrestrial Biodiversity Theme	X			

Specialist assessments identified

Based on the selected classification, and the known impacts associated with the proposed development, the following list of specialist assessments have been identified for inclusion in the assessment report. It is the responsibility of the EAP to confirm this list and to motivate in the assessment report, the reason for not including any of the identified specialist study including the provision of photographic evidence of the site situation.

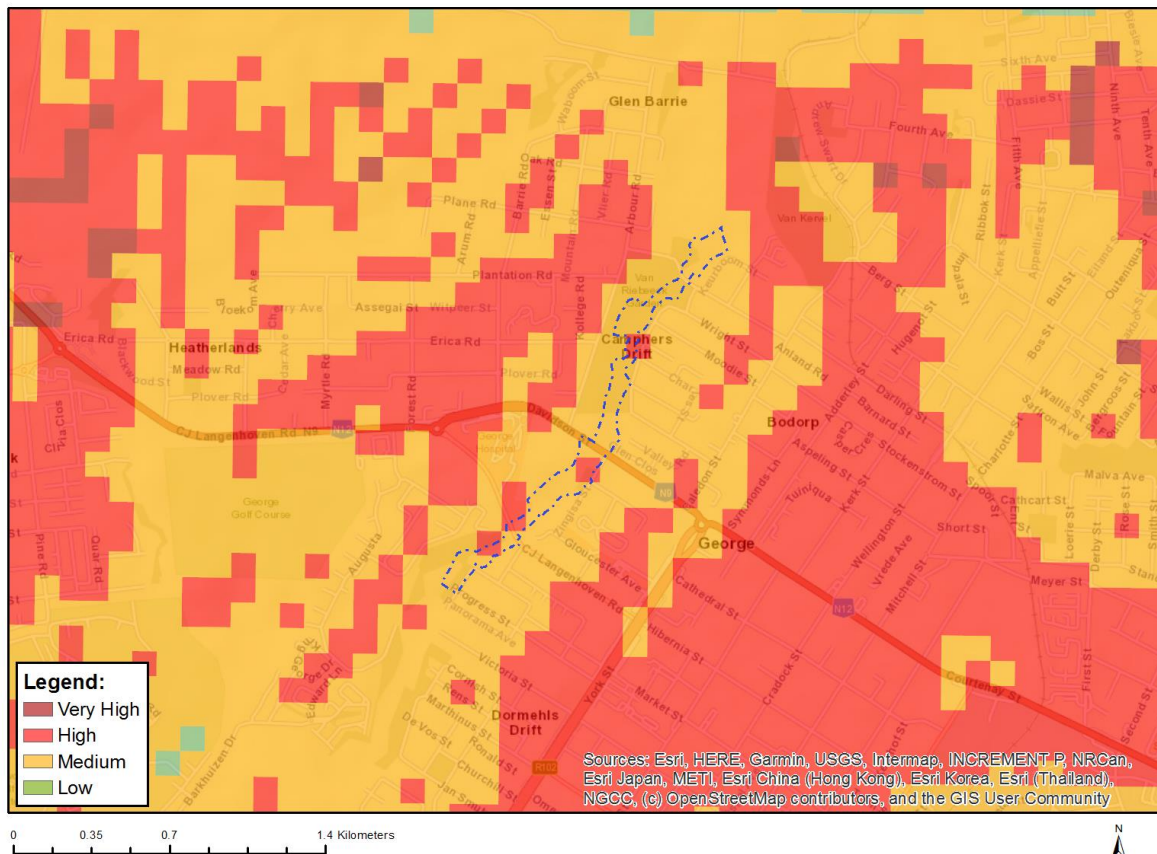
No	Specialist assessment	Assessment Protocol
1	Landscape/Visual Impact Assessment	https://screening.environment.gov.za/ScreeningDownloads/AssessmentProtocols/Gazetted_General_Requirement_Assessment_Protocols.pdf
2	Archaeological and Cultural Heritage Impact Assessment	https://screening.environment.gov.za/ScreeningDownloads/AssessmentProtocols/Gazetted_General_Requirement_Assessment_Protocols.pdf
3	Palaeontology Impact Assessment	https://screening.environment.gov.za/ScreeningDownloads/AssessmentProtocols/Gazetted_General_Requirement_Assessment_Protocols.pdf

		rotocols.pdf
4	Terrestrial Biodiversity Impact Assessment	https://screening.environment.gov.za/ScreeningDownloads/AssessmentProtocols/Gazetted Terrestrial Biodiversity Assessment Protocols.pdf
5	Aquatic Biodiversity Impact Assessment	https://screening.environment.gov.za/ScreeningDownloads/AssessmentProtocols/Gazetted Aquatic Biodiversity Assessment Protocols.pdf
6	Hydrology Assessment	https://screening.environment.gov.za/ScreeningDownloads/AssessmentProtocols/Gazetted General Requirement Assessment Protocols.pdf
7	Socio-Economic Assessment	https://screening.environment.gov.za/ScreeningDownloads/AssessmentProtocols/Gazetted General Requirement Assessment Protocols.pdf
8	Plant Species Assessment	https://screening.environment.gov.za/ScreeningDownloads/AssessmentProtocols/Gazetted Plant Species Assessment Protocols.pdf
9	Animal Species Assessment	https://screening.environment.gov.za/ScreeningDownloads/AssessmentProtocols/Gazetted Animal Species Assessment Protocols.pdf

Results of the environmental sensitivity of the proposed area.

The following section represents the results of the screening for environmental sensitivity of the proposed site for relevant environmental themes associated with the project classification. It is the duty of the EAP to ensure that the environmental themes provided by the screening tool are comprehensive and complete for the project. Refer to the disclaimer.

MAP OF RELATIVE AGRICULTURE THEME SENSITIVITY

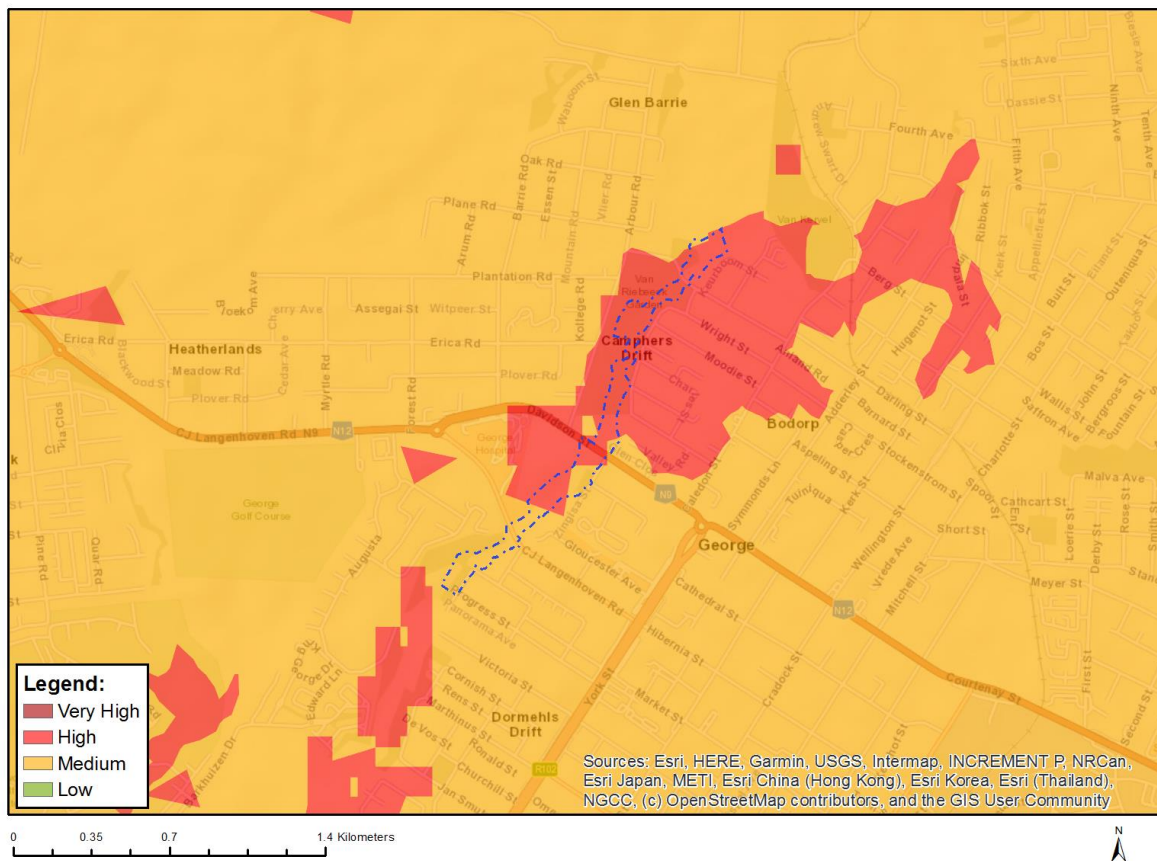


Very High sensitivity	High sensitivity	Medium sensitivity	Low sensitivity
	X		

Sensitivity Features:

Sensitivity	Feature(s)
High	Land capability;09. Moderate-High/10. Moderate-High
Medium	Land capability;06. Low-Moderate/07. Low-Moderate/08. Moderate

MAP OF RELATIVE ANIMAL SPECIES THEME SENSITIVITY



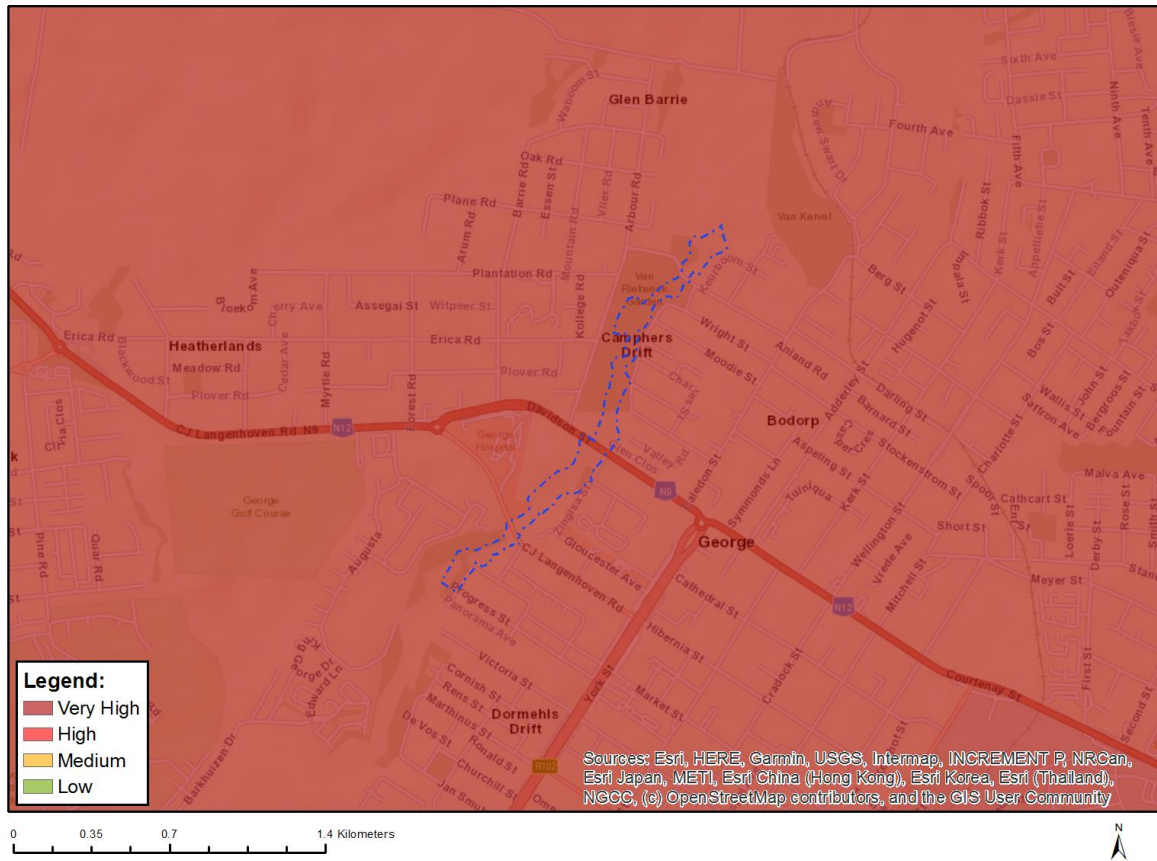
Where only a sensitive plant unique number or sensitive animal unique number is provided in the screening report and an assessment is required, the environmental assessment practitioner (EAP) or specialist is required to email SANBI at eiadatarequests@sanbi.org.za listing all sensitive species with their unique identifiers for which information is required. The name has been withheld as the species may be prone to illegal harvesting and must be protected. SANBI will release the actual species name after the details of the EAP or specialist have been documented.

Very High sensitivity	High sensitivity	Medium sensitivity	Low sensitivity
	X		

Sensitivity Features:

Sensitivity	Feature(s)
High	Amphibia-Afrixalus knysnae
High	Aves-Circus ranivorus
High	Aves-Bradypterus sylvaticus
Medium	Amphibia-Afrixalus knysnae
Medium	Aves-Neotis denhami
Medium	Mammalia-Chlorotalpa duthieae
Medium	Sensitive species 8
Medium	Invertebrate-Aneuryphymus montanus
Medium	Arachnida-Chumma striata
Medium	Arachnida-Moggridgea terricola
Medium	Arachnida-Ilisoa knysna
Medium	Arachnida-Diores silvestris

MAP OF RELATIVE AQUATIC BIODIVERSITY THEME SENSITIVITY



Very High sensitivity	High sensitivity	Medium sensitivity	Low sensitivity
X			

Sensitivity Features:

Sensitivity	Feature(s)
Very High	CBA 1: Aquatic
Very High	CBA 2: Aquatic (degraded)
Very High	Rivers_Z
Very High	SWSA (SW)_Outeniqua
Very High	Wetlands_Eastern Fynbos-Renosterveld Bioregion (Valley-bottom)

MAP OF RELATIVE ARCHAEOLOGICAL AND CULTURAL HERITAGE THEME SENSITIVITY

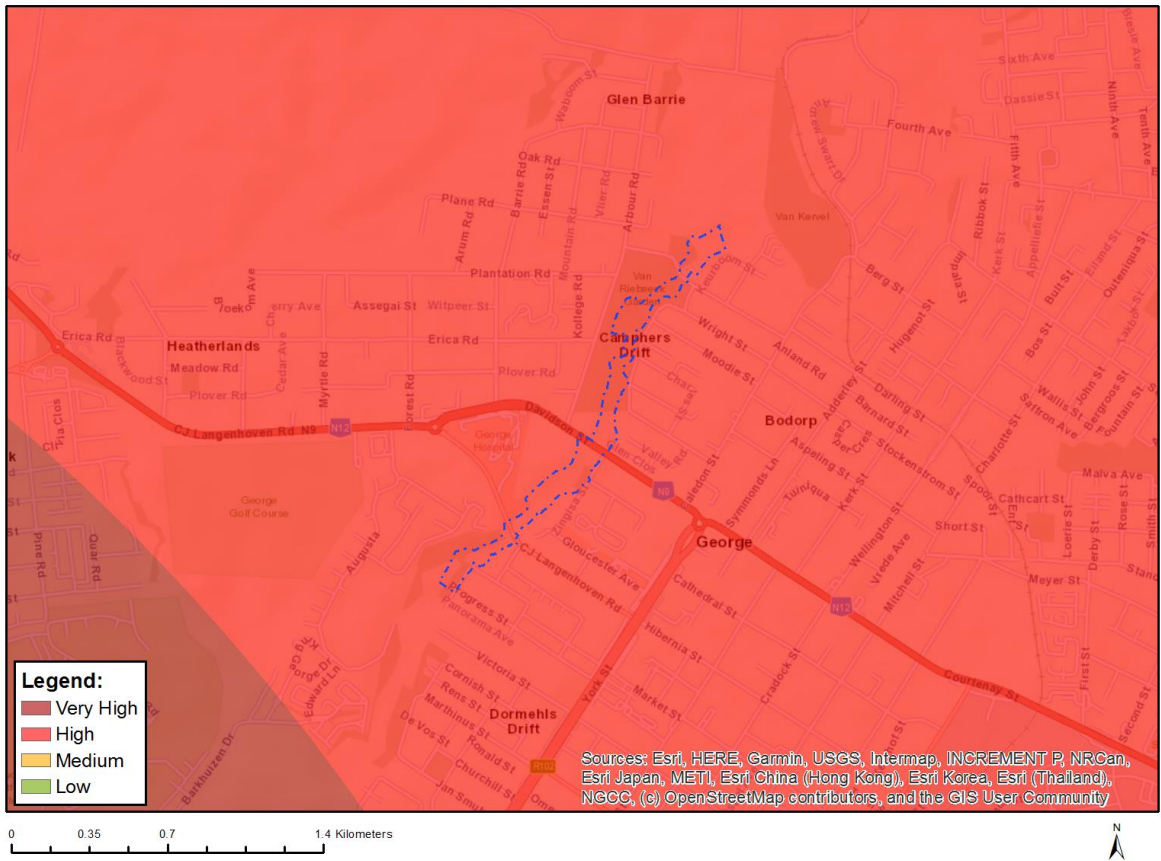


Very High sensitivity	High sensitivity	Medium sensitivity	Low sensitivity
X			

Sensitivity Features:

Sensitivity	Feature(s)
Very High	Within 2km of a Grade II Heritage site

MAP OF RELATIVE CIVIL AVIATION THEME SENSITIVITY

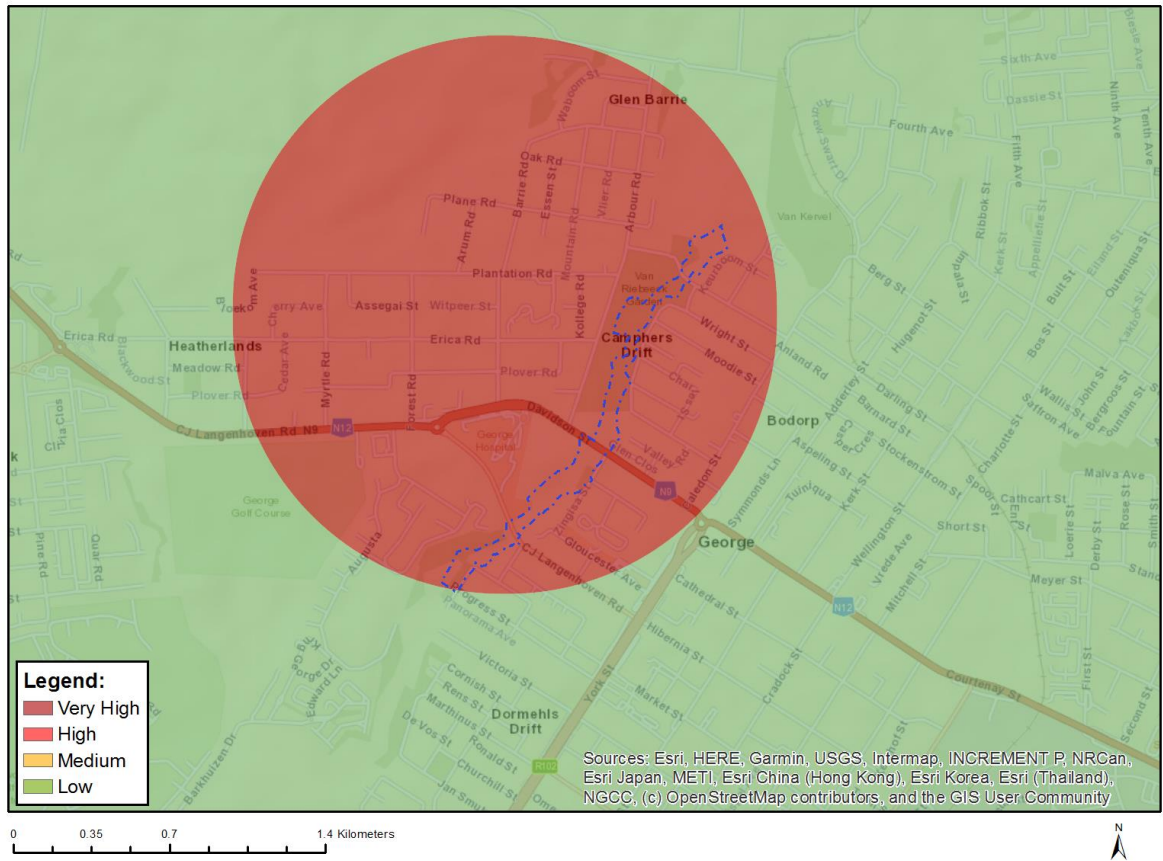


Very High sensitivity	High sensitivity	Medium sensitivity	Low sensitivity
	X		

Sensitivity Features:

Sensitivity	Feature(s)
High	Within 15 km of a civil aviation radar
High	Between 8 and 15 km from a major civil aviation aerodrome

MAP OF RELATIVE DEFENCE THEME SENSITIVITY

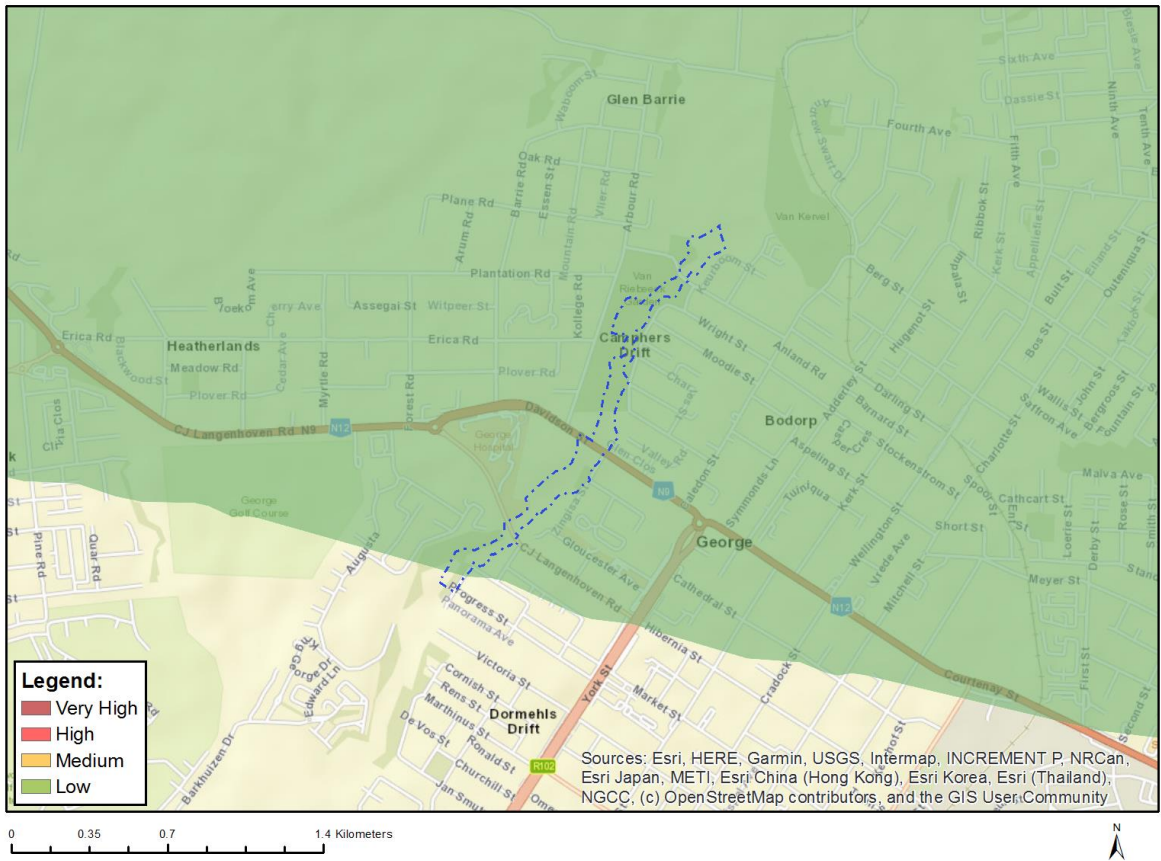


Very High sensitivity	High sensitivity	Medium sensitivity	Low sensitivity
X			

Sensitivity Features:

Sensitivity	Feature(s)
Low	Low Sensitivity
Very High	Military and Defence Site

MAP OF RELATIVE PALEONTOLOGY THEME SENSITIVITY

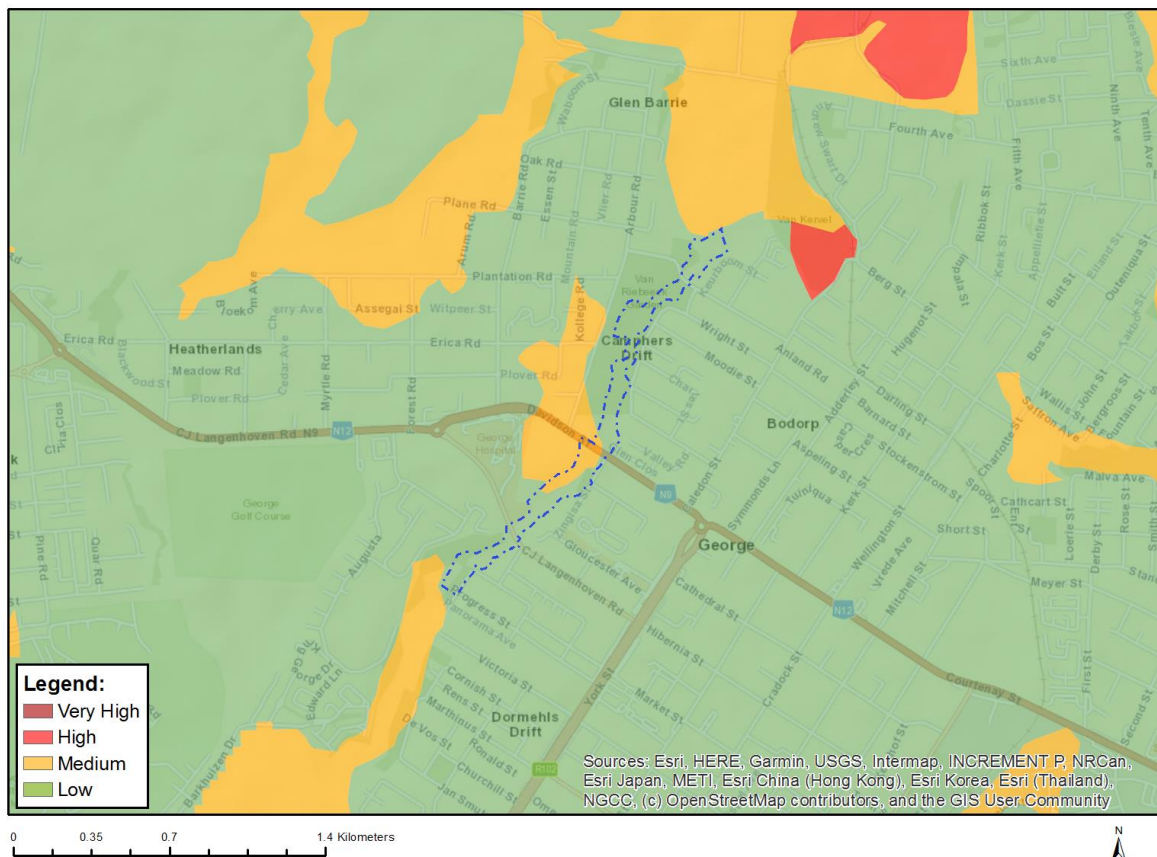


Very High sensitivity	High sensitivity	Medium sensitivity	Low sensitivity
			X

Sensitivity Features:

Sensitivity	Feature(s)
Low	Features with a Low paleontological sensitivity

MAP OF RELATIVE PLANT SPECIES THEME SENSITIVITY



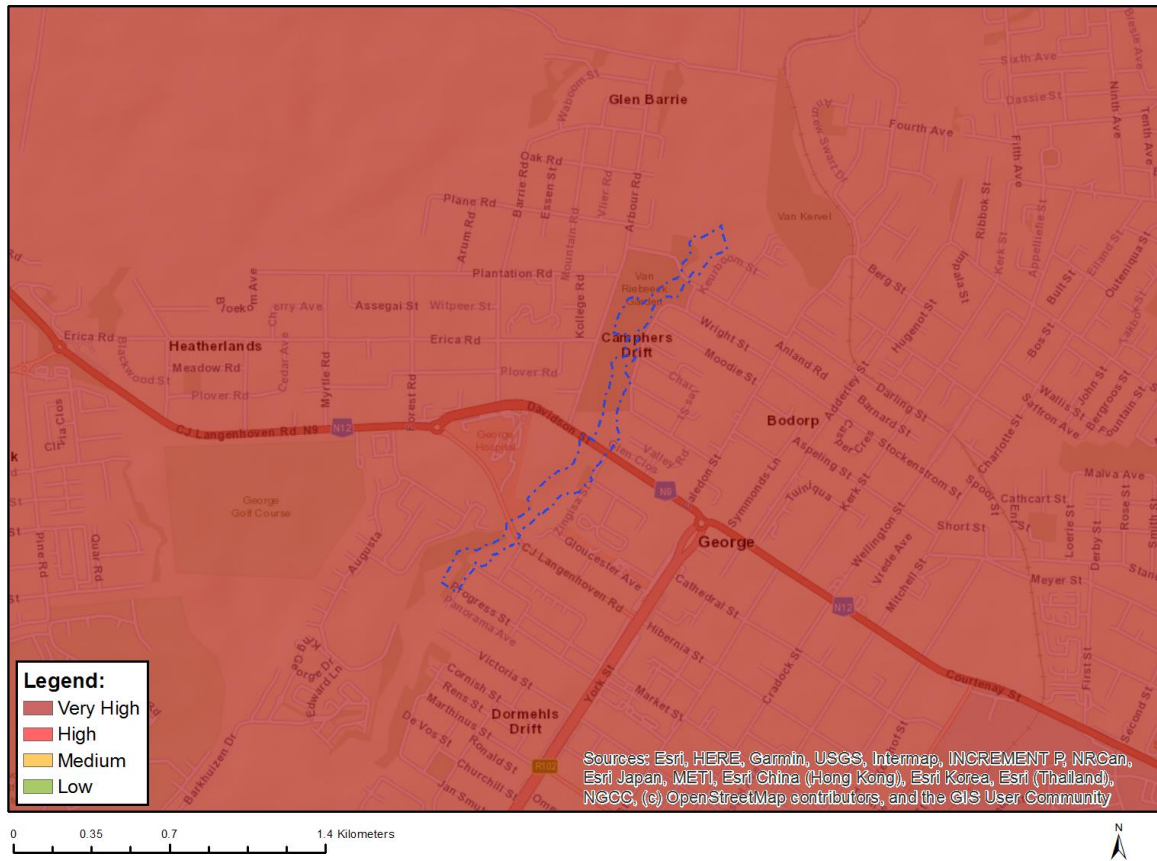
Where only a sensitive plant unique number or sensitive animal unique number is provided in the screening report and an assessment is required, the environmental assessment practitioner (EAP) or specialist is required to email SANBI at aiadatarequests@sanbi.org.za listing all sensitive species with their unique identifiers for which information is required. The name has been withheld as the species may be prone to illegal harvesting and must be protected. SANBI will release the actual species name after the details of the EAP or specialist have been documented.

Very High sensitivity	High sensitivity	Medium sensitivity	Low sensitivity
		X	

Sensitivity Features:

Sensitivity	Feature(s)
Low	Low Sensitivity
Medium	Leucospermum glabrum
Medium	Selago burchellii
Medium	Sensitive species 1081
Medium	Sensitive species 419
Medium	Erica unicolor subsp. mutica
Medium	Sensitive species 1024
Medium	Sensitive species 980
Medium	Sensitive species 763

MAP OF RELATIVE TERRESTRIAL BIODIVERSITY THEME SENSITIVITY



Very High sensitivity	High sensitivity	Medium sensitivity	Low sensitivity
X			

Sensitivity Features:

Sensitivity	Feature(s)
Very High	ESA 2: Restore from other land use
Very High	ESA 2: Restore from plantation or high density IAP
Very High	ESA 1
Very High	CBA 2: Terrestrial
Very High	CBA 1: Terrestrial
Very High	SWSA (SW) _Outeniqua
Very High	EN_Cape Lowland Alluvial Vegetation
Very High	CR_Garden Route Granite Fynbos
Very High	EN_Garden Route Shale Fynbos