

TO DE AAR

Hydra Eskom Substation

50 000 SOUTH AFRICA 302
SUID-AFRIKA 302

Centre Points:
30°46'43.23"S
24°8'29.87"E

VERKLARING

—	Nasionale Deurpad; Nasionale Roor
—	Hoofpad
—	Sekondêre Pad; Hoogfomark
—	Ander Pad; Brug
—	Dowwe Pad; Voetslaanpad
—	Spoorweg; Stasie of Slyn
—	Andr. Spoorweg; Tormel
—	Graving; Deurgrawing
—	Kraglyn
—	Beboude Gebied (Hoë, Lae Digtheid)
—	Geboue; Muraas
—	Poskantoor; Polisie-stasie; Winkel
—	Plaas van Aanbidding; Skool; Hotel
—	Dradheining; Muur
—	Windpompe; Monument
—	Kommuikasiesig
—	Windturbine; Windplaa
—	Satelliet Antenna; Sonkrag Plaas
—	Peilbakke; Seewaartek

Prevaling Wind Direction: South-ward
(Dominant wind direction from the North)

Prepared for:
Mulilo Renewable Energy (Pty) Ltd

Prepared by:
Sharples Environmental Services CC

**Proposed Hercules Solar Cluster,
Emthanjeni Local Municipality,
Pixley ka Seme District Municipality, Northern Cape**

2,5 1,25 0 2,5 Km

Coordinate System: GCS WGS 1984
Datum: WGS 1984
Units: Degree
Date: April 2024

Legend

—	External Road
—	Road network
—	Railroad
□	Properties
□	Total Study Area
□	Total Development Area
□	Development footprint

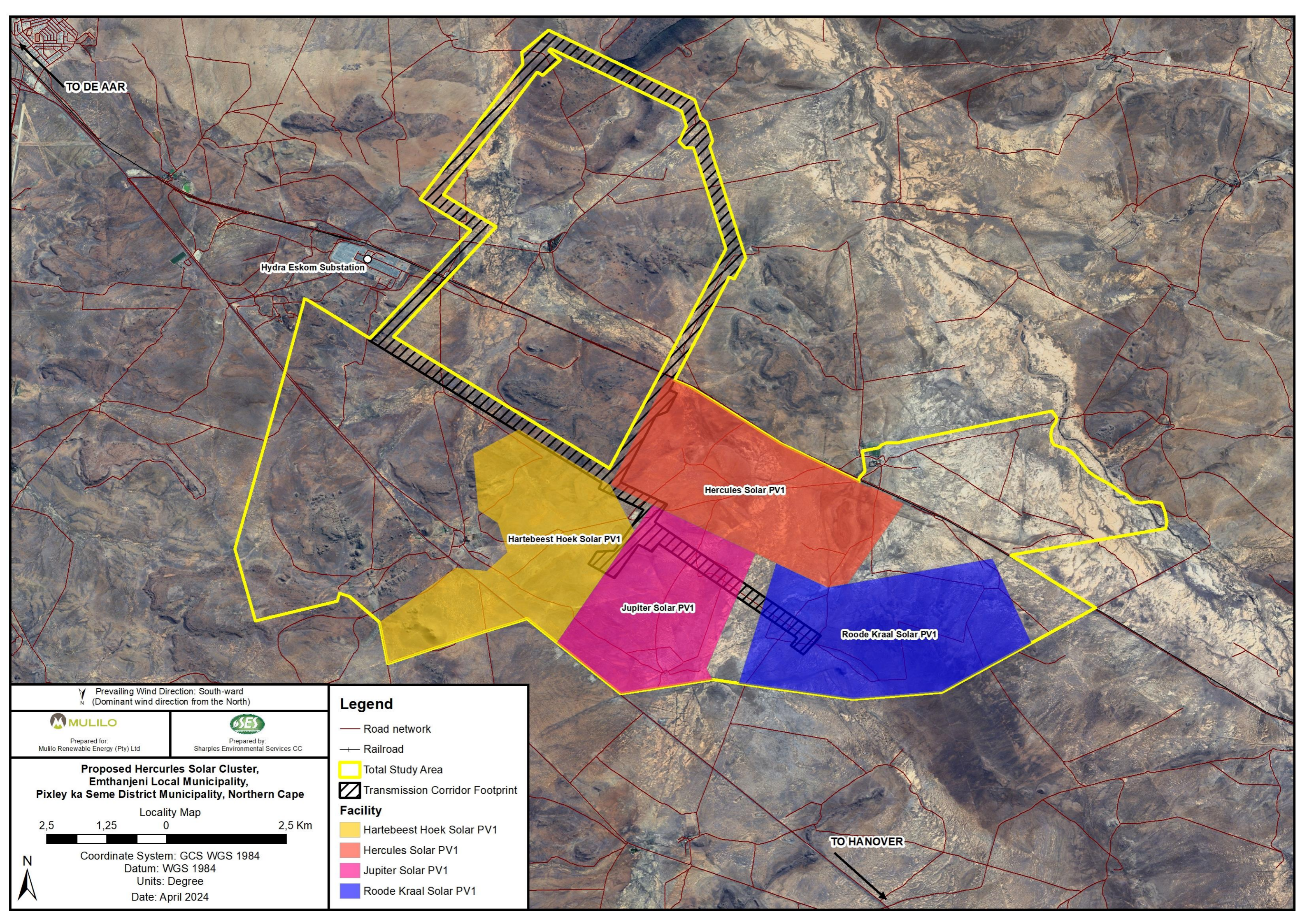
Data for this map extracted as at 19/03/2017.

REFERENCE

—	International Boundary and Beacon
—	Provincial Boundary
—	Protected Area
—	Perennial River
—	Perennial Water
—	Non-perennial River
—	Non-Perennial Water
—	Dry Water Course
—	Dry Pan
—	Marsh and Vlei
—	Pipeline (above ground)
—	Water Tower, Reservoir, Water Point
—	Coastal Rocks
—	Prominent Rock Outcrop
—	Erosion; Sand
—	Woodland
—	Cultivated Land
—	Orchard; Vineyard
—	Settlement Ground
—	Row of Trees
—	Mine Dump; Excavation

3024CA DE AAR FOURTH EDITION
VERDE UITGAWE 2014

3024CA DE AAR BLACK
3024CA DE AAR BLUE



TO DE AAR

Hydra Eskom Substation

Hercules Solar PV1

Hartebeest Hoek Solar PV1

Jupiter Solar PV1

Roode Kraal Solar PV1

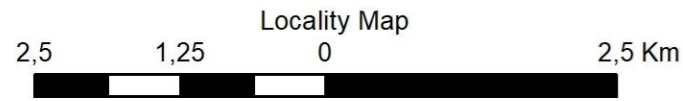
TO HANOVER

Prevaling Wind Direction: South-ward
(Dominant wind direction from the North)

MULILO
Prepared for:
Mulilo Renewable Energy (Pty) Ltd

SES
Prepared by:
Sharples Environmental Services CC

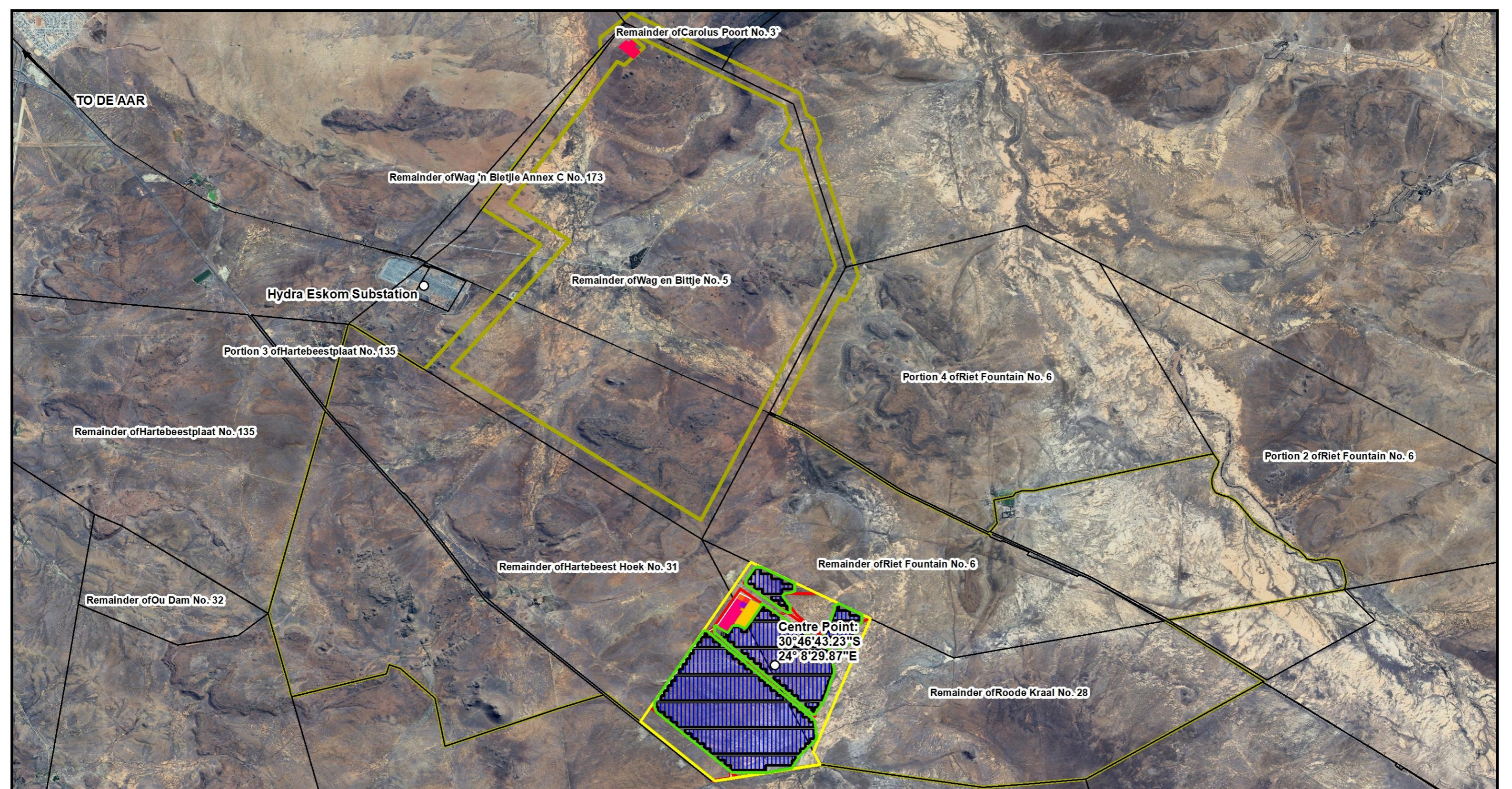
**Proposed Hercules Solar Cluster,
Emthanjeni Local Municipality,
Pixley ka Seme District Municipality, Northern Cape**



Coordinate System: GCS WGS 1984
Datum: WGS 1984
Units: Degree
Date: April 2024

Legend

- Road network
- Railroad
- Total Study Area
- ▨ Transmission Corridor Footprint
- Facility**
- Hartebeest Hoek Solar PV1
- Hercules Solar PV1
- Jupiter Solar PV1
- Roode Kraal Solar PV1

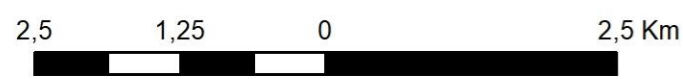


Prevailing Wind Direction: South-ward
 (Dominant wind direction from the North)

Prepared for:
 Mulilo Renewable Energy (Pty) Ltd

Prepared by:
 Sharples Environmental Services CC

**Proposed Jupiter PV1,
 Emthanjeni Local Municipality,
 Pixley ka Seme District Municipality, Northern Cape**



Coordinate System: GCS WGS 1984
 Datum: WGS 1984
 Units: Degree
 Date: April 2024

Legend

- | | |
|--|--|
| <ul style="list-style-type: none"> External Road Railroad Properties Total Study Area Fenced areas Internal Roads Solar Array Total Development Area Development footprint | <p>Component Name</p> <ul style="list-style-type: none"> BESS Area Diesel Storage Area Eskom Switching Station IPP Substation Kestrel MTS Laydown Area Medium Voltage Power Stations O&M Buildings and Site Offices Solar Array |
|--|--|

50

TO HANOVER