

TO DE AAR

Hydra Eskom Substation

50 000 SOUTH AFRICA 302 SUID-AFRIKA

Centre Points:
 30°47'4.89"S
 24°11'11.26"E

VERKLARING

Internasionale Grense en Baken National Freeway; Na Provinsiale Grense Arterial Road; Bewarings Gebied Main Road; Standhoudende Water Other Road; Nie-standhoudende Water Track and Hiking Trail; Nie-standhoudende Water Railway Station or Stop; Droë Loop Other Railway; Tunnels; Droë Pad Embankment; Cutting; Moeras en Vleë Power Line; Pyplyn bo die grond Built-up Area (High, L); Waterpomp; Reservoir; Water Pump; Buildings; Ruig; Kuslynroete; Post Office; Police Station; Prominent Klipbank Place of Worship; Scherpe Klipbank; Erosie; Sand Fence; Waterpomp; Gebiede Land Communication Tower; Boortuurgang Wind Turbine; Wind Farm; Ontspanningsgebied; Satelliet Antenna; Solêre Panel; Rys Bome; Uitgraving Light House and Marine Cemetery

Internasionale Grense en Baken National Freeway; Na Provinsiale Grense Arterial Road; Bewarings Gebied Main Road; Standhoudende Water Other Road; Nie-standhoudende Water Track and Hiking Trail; Nie-standhoudende Water Railway Station or Stop; Droë Loop Other Railway; Tunnels; Droë Pad Embankment; Cutting; Moeras en Vleë Power Line; Pyplyn bo die grond Built-up Area (High, L); Waterpomp; Reservoir; Water Pump; Buildings; Ruig; Kuslynroete; Post Office; Police Station; Prominent Klipbank Place of Worship; Scherpe Klipbank; Erosie; Sand Fence; Waterpomp; Gebiede Land Communication Tower; Boortuurgang Wind Turbine; Wind Farm; Ontspanningsgebied; Satelliet Antenna; Solêre Panel; Rys Bome; Uitgraving Light House and Marine Cemetery

Prevaling Wind Direction: South-ward (Dominant wind direction from the North)

MULO Prepared for: Mulilo Renewable Energy (Pty) Ltd

SES Prepared by: Sharples Environmental Services CC

Proposed Hercules Solar Cluster, Emthanjeni Local Municipality, Pixley ka Seme District Municipality, Northern Cape

2,5 1,25 0 2,5 Km

Coordinate System: GCS WGS 1984
 Datum: WGS 1984
 Units: Degree
 Date: April 2024

Legend

- Total Development Area
- External Road
- Development footprint
- Road network
- Railroad
- Properties
- Total Study Area

INDEX TO SHEETS / INDEKS VAN VELLE

3023BB	3024AC	3024AD
3023DB	3024CA	3024CB
3023DD	3024CC	3024CD

WGS84

Data for this map extracted as at 19/03/2017.

VERKLARING

Internasionale Grense en Baken National Freeway; Na Provinsiale Grense Arterial Road; Bewarings Gebied Main Road; Standhoudende Water Other Road; Nie-standhoudende Water Track and Hiking Trail; Nie-standhoudende Water Railway Station or Stop; Droë Loop Other Railway; Tunnels; Droë Pad Embankment; Cutting; Moeras en Vleë Power Line; Pyplyn bo die grond Built-up Area (High, L); Waterpomp; Reservoir; Water Pump; Buildings; Ruig; Kuslynroete; Post Office; Police Station; Prominent Klipbank Place of Worship; Scherpe Klipbank; Erosie; Sand Fence; Waterpomp; Gebiede Land Communication Tower; Boortuurgang Wind Turbine; Wind Farm; Ontspanningsgebied; Satelliet Antenna; Solêre Panel; Rys Bome; Uitgraving Light House and Marine Cemetery

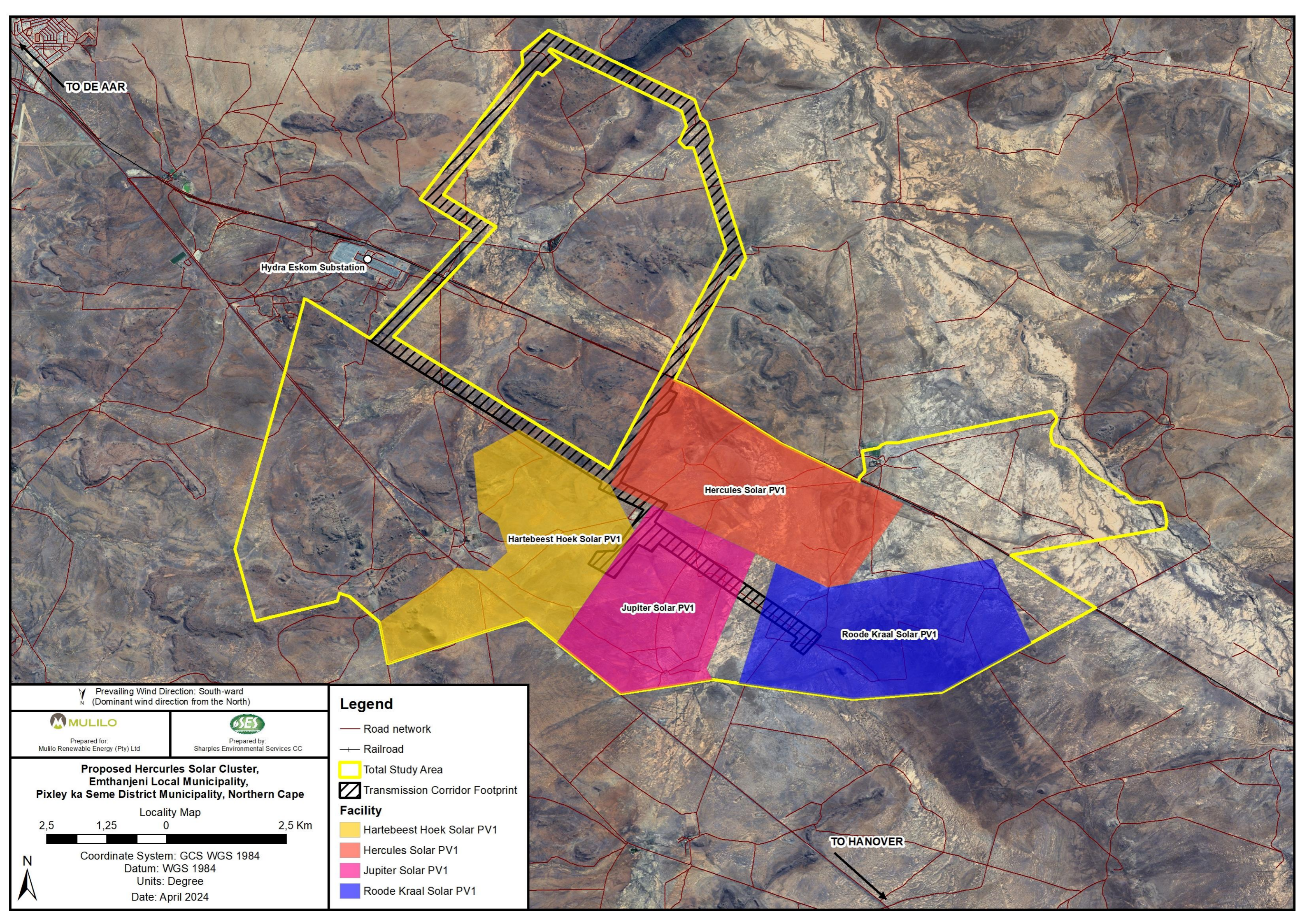
3024CA DE AAR

3024CA DE AAR BLACK

3024CA DE AAR BLUE

3024CA DE AAR BROWN

FOURTH EDITION / VERDE UITGAWE 2014



TO DE AAR

Hydra Eskom Substation

Hercules Solar PV1

Hartebeest Hoek Solar PV1

Jupiter Solar PV1

Roode Kraal Solar PV1

TO HANOVER

Prevaling Wind Direction: South-ward
(Dominant wind direction from the North)



Prepared for:
Mulilo Renewable Energy (Pty) Ltd



Prepared by:
Sharples Environmental Services CC

**Proposed Hercules Solar Cluster,
Emthanjeni Local Municipality,
Pixley ka Seme District Municipality, Northern Cape**

Locality Map

2,5 1,25 0 2,5 Km



Coordinate System: GCS WGS 1984

Datum: WGS 1984

Units: Degree

Date: April 2024



Legend

— Road network

— Railroad

□ Total Study Area

▨ Transmission Corridor Footprint

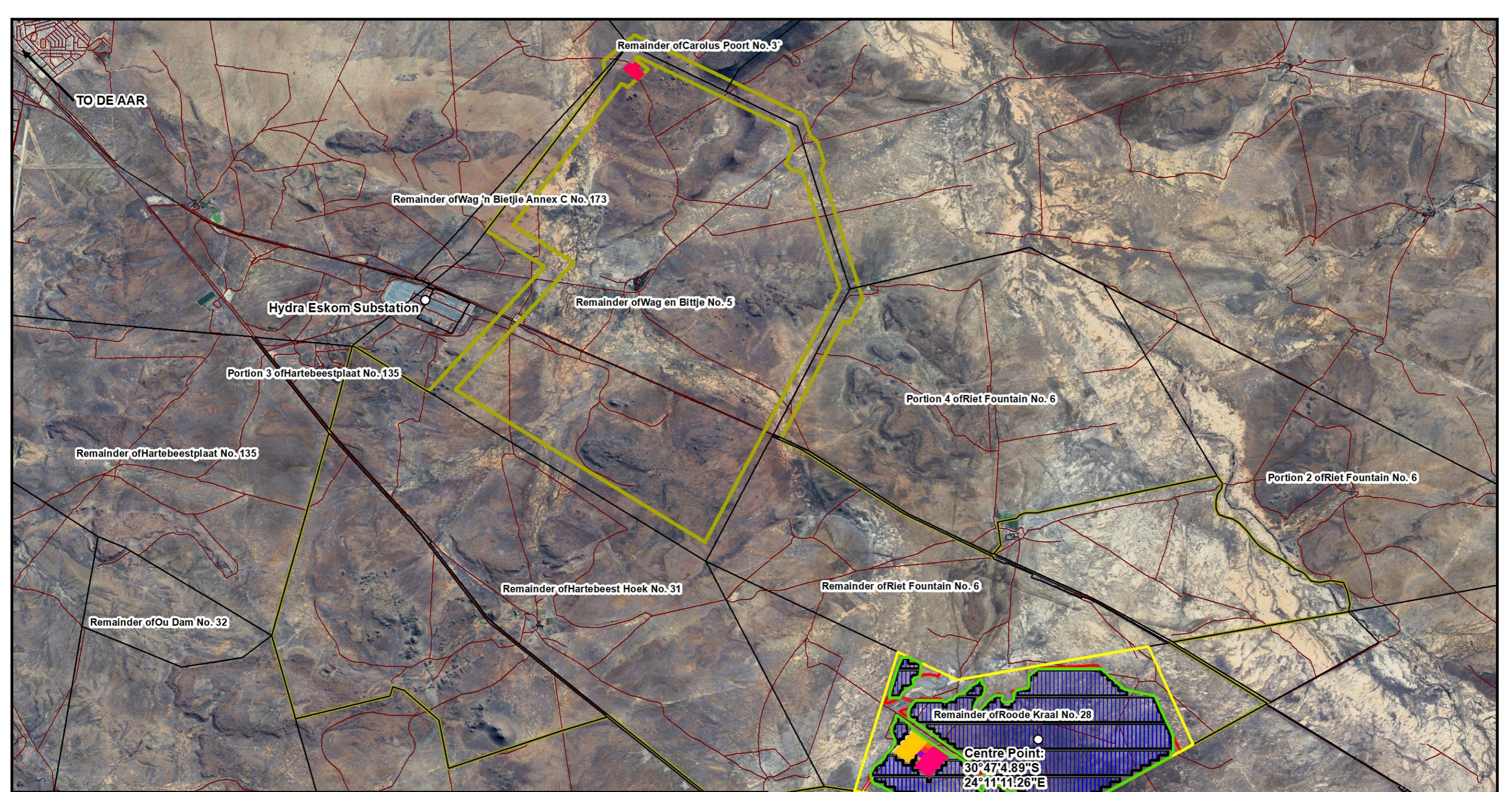
Facility

■ Hartebeest Hoek Solar PV1

■ Hercules Solar PV1

■ Jupiter Solar PV1

■ Roode Kraal Solar PV1



TO DE AAR

Remainder of Carolus Poort No. 3

Remainder of Wag 'n Bietjie Annex C No. 173

Hydra Eskom Substation

Remainder of Wag en Bittje No. 5

Portion 3 of Hartebeestplaat No. 135

Portion 4 of Riet Fountain No. 6

Remainder of Hartebeestplaat No. 135

Portion 2 of Riet Fountain No. 6

Remainder of Ou Dam No. 32

Remainder of Hartebeest Hoek No. 31

Remainder of Riet Fountain No. 6

Remainder of Roode Kraal No. 28

Centre Point:
30°47'4.89"S
24°11'11.26"E

Portion 2 of Roode Kraal No. 28

TO HANOVER

Prevailing Wind Direction: South-ward
(Dominant wind direction from the North)



Prepared for:
Mulilo Renewable Energy (Pty) Ltd



Prepared by:
Sharples Environmental Services CC

**Proposed Roode Kraal Solar PV1,
Emthanjeni Local Municipality,
Pixley ka Seme District Municipality, Northern Cape**

2,5 1,25 0 2,5 Km

Coordinate System: GCS WGS 1984
Datum: WGS 1984
Units: Degree
Date: April 2024

Legend

- External Road
- Road network
- Railroad
- Properties
- Total Study Area
- Fenced areas
- Internal Roads
- Solar Array
- Total Development Area
- Development footprint

Component Name

- Battery Energy Storage System Area
- Diesel Storage Area
- Eskom Switching Station
- IPP Substation
- Kestrel MTS
- Laydown Area
- Medium Voltage Power Stations
- O&M Buildings and Site Offices
- Solar Array