

TO DE AAR

Hydra Eskom Substation

Hartebeest Hoek Solar PV1

Hercules Solar PV1

Jupiter Solar PV1

Roode Kraal Solar PV1

Prevaling Wind Direction: South-ward
(Dominant wind direction from the North)



Prepared for:
Mulilo Renewable Energy (Pty) Ltd



Prepared by:
Sharples Environmental Services CC

**Proposed Hercules Solar Cluster,
Emthanjeni Local Municipality,
Pixley ka Seme District Municipality, Northern Cape**

2,5 1,25 0 2,5 Km

Coordinate System: GCS WGS 1984
Datum: WGS 1984
Units: Degree
Date: April 2024

Legend

- External Road
- Railroad
- Properties
- Total Study Area
- Fenced areas
- Internal Roads
- Solar Array
- Total Development Area
- Development footprint

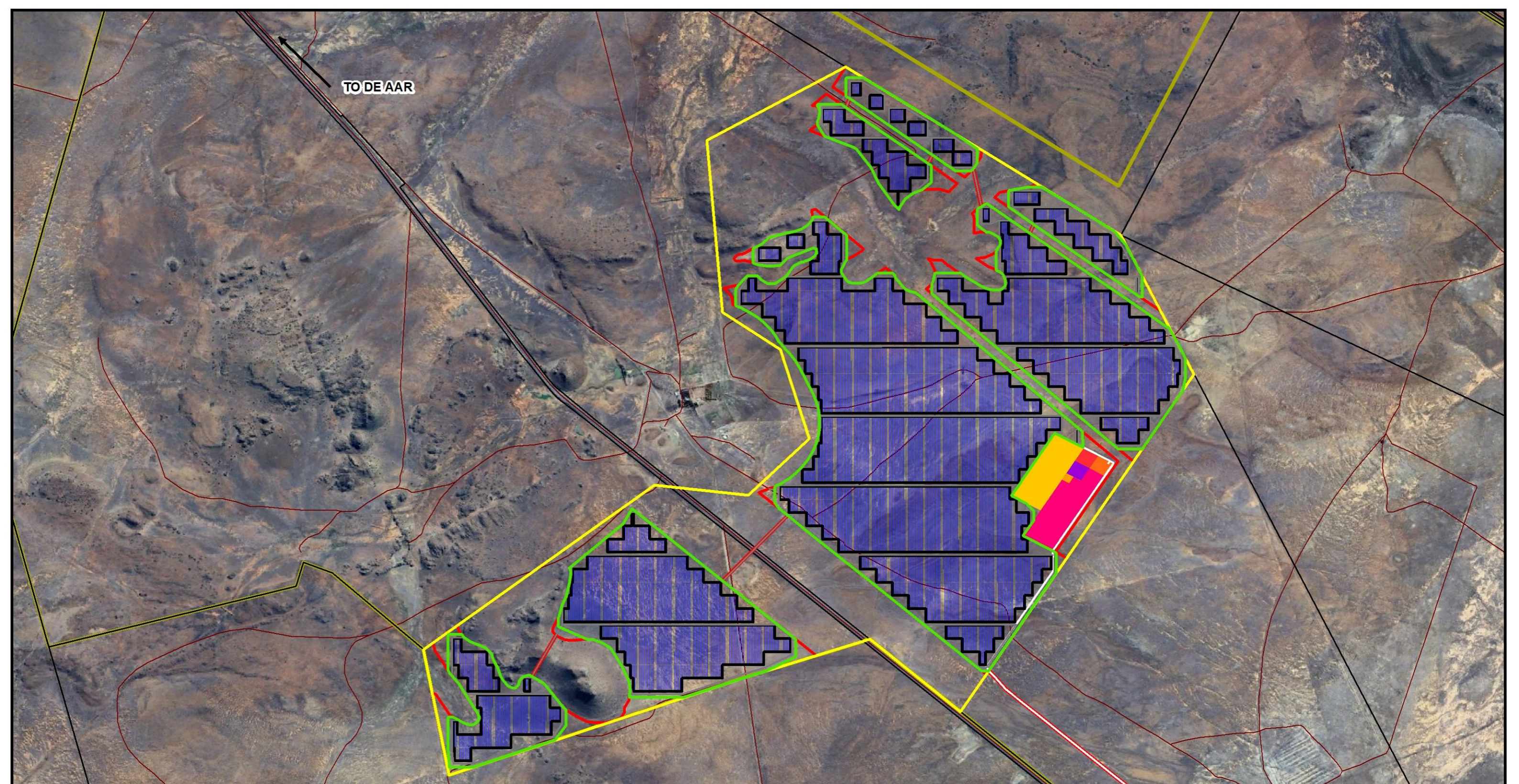
Facility


- Hartebeest Hoek Solar PV1
- Hercules Solar PV1
- Jupiter Solar PV1
- Roode Kraal Solar PV1

Component Name

- BESS Area
- Diesel Storage Area
- Eskom Switching Station
- IPP Substation
- Kestrel MTS
- Laydown Area
- Medium Voltage Power Stations
- O&M Buidlings and Site Offices
- Solar Array

TO HANOVER



 Prevailing Wind Direction: South-ward
 (Dominant wind direction from the North)

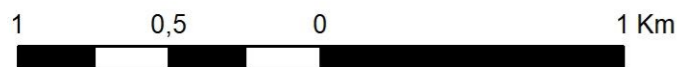


Prepared for:
Mulilo Renewable Energy (Pty) Ltd



Prepared by:
Sharples Environmental Services CC

Proposed Hercules Solar Cluster,
Emthanjeni Local Municipality,
Pixley ka Seme District Municipality, Northern Cape



Coordinate System: GCS WGS 1984
 Datum: WGS 1984
 Units: Degree
 Date: April 2024



Legend

- | | |
|------------------------|--------------------------------|
| Fenced areas | All_layers |
| Internal Roads | Component Name |
| Solar Array | BESS Area |
| Total Development Area | Diesel Storage Area |
| External Road | Eskom Switching Station |
| Development footprint | IPP Substation |
| Road network | Kestrel MTS |
| Railroad | Laydown Area |
| Properties | Medium Voltage Power Stations |
| Total Study Area | O&M Buildings and Site Offices |
| | Solar Array |

TO HANOVER