

SOCIAL ASSESSMENT

BASELINE SCOPING REPORT

HERCULES PV SOLAR ENERGY FACILITY CLUSTER

NORTHERN CAPE PROVINCE

SEPTEMBER 2022

Prepared

By

Tony Barbour

Tony Barbour

ENVIRONMENTAL CONSULTING

10 Firs Avenue, Claremont, 7708, South Africa
(Tel) 27-21-761 2355 - (Fax) 27-21-761 2355 - (Cell) 082 600 8266
(E-Mail) tbarbour@telkomsa.net

EXECUTIVE SUMMARY

INTRODUCTION AND LOCATION

Sharples Environmental Services cc (SES) was appointed to manage the Environmental Impact Assessment (EIA) process for the proposed Hercules PV Solar Energy Facility (SEF) Cluster located approximately 15 km south-east of the town of De Aar in the Northern Cape Province. The project site is situated within the Emthanjeni Local Municipality (ELM), which is located within the Pixley Ka Seme District Municipality (PKSDM). The PV SEF Cluster consists of eight PV SEFs, provisional named Hercules 1-8. Battery Energy Storage Systems (BESSs) are associated with each PV SEF.

Tony Barbour Environmental Consulting was appointed to undertake a specialist Social Impact Assessment (SIA) as part of an EIA process. This report contains the findings of the Scoping Level SIA for the proposed Hercules PV SEF Cluster. Separate SIAs will be undertaken for each PV SEF during the Assessment Phase.

SUMMARY OF KEY FINDINGS

KEY FINDINGS

The key findings of the study are summarised under the following sections:

- Fit with policy and planning.
- Construction phase impacts.
- Operational phase impacts.
- Cumulative impacts.
- Decommissioning phase impacts.
- No-development option.

The findings of the Social Baseline Scoping Report are based on a review of relevant documents and the authors experience with undertaking SIAs for a number of renewable energy projects located in the Northern Cape Province. The issues will be confirmed and assessed during the Assessment Phase of the EIA process.

POLICY AND PLANNING ISSUES

The development of renewable energy is strongly supported at a national, provincial, and local level. The development of and investment in renewable energy is supported by the National Development Plan (NDP), New Growth Path Framework and National Infrastructure Plan, which all refer to and support renewable energy. The PKSDM SDF and IDP and ELM IDP also support the development of renewable energy. The development of the proposed PV SEF Cluster is therefore supported by key policy and planning documents.

CONSTRUCTION PHASE

The key social issues associated with the construction phase of the PV Cluster include:

Potential positive impacts

- Creation of employment and business opportunities, and the opportunity for skills development and on-site training.

Potential negative impacts

- Impacts associated with the presence of construction workers on local communities.
- Impacts related to the potential influx of jobseekers.
- Increased risks to livestock and farming infrastructure associated with the construction related activities and presence of construction workers on the site.
- Increased risk of grass fires associated with construction related activities.
- Nuisance impacts, such as noise, dust, and safety, associated with construction related activities and vehicles.
- Impact on productive farmland.

Table 1 provides a summary of the potential significance ratings for the social impacts associated with the construction phase. The significance ratings apply to each PV SEF. The initial assessment of the potential significance is based on the findings of SIAs undertaken for PV SEFs, including PV SEFs located in the vicinity of De Aar. The findings will be confirmed during the Assessment Phase, which will include a site visit and interviews with key stakeholders.

Table 1: Summary of social impacts during construction phase

Impact	Significance No Mitigation/Enhancement	Significance With Mitigation/Enhancement
Creation of employment and business opportunities	Medium (Positive)	Medium (Positive)
Presence of construction workers and potential impacts on family structures and social networks	Low (Negative)	Low (Negative)
Influx of job seekers	Low (Negative)	Low (Negative)
Safety risk, stock theft and damage to farm infrastructure associated with presence of construction workers	Medium (Negative)	Low (Negative)
Increased risk of grass fires	Medium (Negative)	Low (Negative)
Impact of heavy vehicles and construction activities	Medium (Negative)	Low (Negative)

OPERATIONAL PHASE

The key social issues associated with the operational phase of the PV Cluster include:

Potential positive impacts

- The establishment of infrastructure to improve energy security and support renewable sector.
- Creation of employment opportunities.
- Benefits for local landowners.

- Benefits associated with socio-economic contributions to community development.

Potential negative impacts

- Visual impacts and associated impacts on sense of place.
- Potential impact on property values.
- Potential impact on tourism.

Table 2 provides a summary of the potential significance ratings for the social impacts associated with the operational phase. The significance ratings apply to each PV SEF. The initial assessment of the potential significance is based on the findings of SIAs undertaken for PV SEFs, including PV SEFs located in the vicinity of De Aar. The findings will be confirmed during the Assessment Phase, which will include a site visit and interviews with key stakeholders.

Table 2: Summary of social impacts during operational phase

Impact	Significance No Mitigation/Enhancement	Significance With Mitigation/Enhancement
Establish infrastructure to generate renewable energy	Moderate (Positive)	Moderate (Positive)
Creation of employment and business opportunities during maintenance	Low (Positive)	Medium (Positive)
Benefit associated with community trust	Moderate (Positive)	High (Positive)
Benefits for landowners	Low (Positive)	Medium (Positive)
Visual impact and impact on sense of place	Low-Moderate (Negative)	Low-Moderate (Negative)
Impact on property values	Low-Moderate (Negative)	Low-Moderate (Negative)
Impact on tourism	Low-Moderate (Negative)	Low-Moderate (Negative)

DECOMMISSIONING PHASE

The number of jobs lost will be in the region of 20 for each PV SEF. The impacts associated with the loss of jobs during the decommissioning phase can be affectively mitigated. With mitigation the significance is likely to be **Low Negative**.

CUMULATIVE IMPACTS

The cumulative impacts include:

- Cumulative impact on sense of place. It will be difficult to mitigate the visual impact on the areas sense of place. The significance will be informed by the Visual Impact Assessment.
- Cumulative impact on local services and accommodation. With effective mitigation the impact significance is likely to be **Low Negative**.
- Cumulative impact on local economy. With enhancement the impact significance is likely to the be **High Positive**.

The impacts and associated significance will be assessed during the Assessment Phase.

NO-DEVELOPMENT OPTION

The No-Development option would represent a lost opportunity for South Africa to improve energy security and supplement its current energy needs with clean, renewable energy. Given South Africa's current energy security challenges and its position as one of the highest per capita producers of carbon emissions in the world, this would represent a significant negative social cost.

CONCLUSION

Based on the findings of the Social Scoping Assessment the establishment of Hercules PV SEF Cluster and associated infrastructure will create employment and business opportunities for locals in the ELM during both the construction and operational phase of the project. Based on other PV SEF projects all of the potential negative impacts, with the exception of the impact on sense of place, can also be effectively mitigated.

The establishment of a Community Trust will also benefit the local community. The enhancement measures listed in the report should be implemented in order to maximise the potential benefits. Based on other PV SEF projects the significance of this impact is likely to be **High Positive**. The proposed development also represents an investment in clean, renewable energy infrastructure, which, given the negative environmental and socio-economic impacts associated a coal-based energy economy and the challenges created by climate change, represents a significant positive social benefit for society as a whole. The establishment of the proposed Hercules PV SEF Cluster and associated infrastructure including a battery energy storage system (BESS) is therefore supported by the findings of the Social Scoping Assessment.

TABLE OF CONTENTS

EXECUTIVE SUMMARY	i
SECTION 1: INTRODUCTION.....	1
1.1 INTRODUCTION	1
1.2 TERMS OF REFERENCE AND APPROACH	1
1.3 PROJECT DESCRIPTION	2
1.4 ASSUMPTIONS AND LIMITATIONS	5
1.4.1 Assumptions.....	5
1.4.2 Limitations	5
1.5 SPECIALIST DETAILS.....	5
1.6 DECLARATION OF INDEPENDENCE	5
1.7 REPORT STUCTURE	6
SECTION 2: POLICY AND PLANNING ENVIRONMENT	7
2.1 INTRODUCTION	7
2.2 NATIONAL POLICY ENVIRONMENT	7
2.2.1 National Energy Act (Act No 34 of 2008).....	7
2.2.2 White Paper on the Energy Policy of the Republic of South Africa	8
2.2.3 White Paper on Renewable Energy	8
2.2.4 Integrated Resource Plan (2019)	9
2.2.5 National Development Plan	11
2.2.6 The New Growth Path Framework	11
2.2.7 National Infrastructure Plan.....	11
2.2.8 Astronomy Geographic Advantage Act	12
2.3 PROVINCIAL AND LOCAL LEVEL POLICY AND PLANNING	12
2.3.1 Northern Cape Province Provincial Growth and Development Strategy ...	12
2.3.2 Northern Cape Provincial Spatial Development Framework	14
2.2.3 Northern Cape Climate Change Response Strategy.....	15
2.2.4 Northern Cape Province Green Document.....	16
2.3.4 Pixley ka Seme District Municipality Integrated Development Plan.....	16
2.3.5 Pixley ka Seme District Municipality Spatial Development Framework	17
2.3.6 Emthanjeni Local Municipality Integrated Development Plan	19
2.4 OVERVIEW RENEWABLE ENERGY SECTOR IN SOUTH AFRICA.....	20
2.4.1 Independent Power Producers Procurement Programme (IPPPP): An Overview	21
2.4.2 Green Jobs Study.....	28
2.4.3 Powering the Future: Renewable Energy Roll-out in South Africa.....	30
2.4.4 WWF SA Renewable Energy Vision 2030	31
2.4.5 The impact of the green economy on jobs in South Africa	33
2.4.6 The potential for local community benefits	34
SECTION 3: OVERVIEW OF STUDY AREA	35
3.1 INTRODUCTION	35
3.2 ADMINISTRATIVE CONTEXT.....	35
3.3 PROVINCIAL CONTEXT	36
3.4 MUNICIPAL OVERVIEW	40
3.5 MUNICIPAL SERVICES	42
3.6 HEALTH AND COMMUNITY FACILITIES	43
3.7 ECONOMIC OVERVIEW.....	43
3.8 OVERVIEW OF STUDY AREA	44
SECTION 4: OVERVIEW OF KEY SOCIAL ISSUES	45
4.1 INTRODUCTION	45

4.2	ASSESSMENT OF POLICY AND PLANNING FIT	45
4.3	CONSTRUCTION PHASE SOCIAL IMPACTS	45
4.3.1	Creation of local employment, training, and business opportunities	46
4.3.2	Impact of construction workers on local communities	47
4.3.3	Influx of job seekers.....	48
4.3.4	Risk to safety, livestock, and farm infrastructure.....	49
4.3.5	Increased risk of grass fires	50
4.3.6	Nuisance impacts associated with construction related activities	51
4.3.7	Impacts associated with loss of farmland	52
4.4	OPERATIONAL PHASE SOCIAL IMPACTS	53
4.4.1	Improve energy security and support the renewable energy sector	53
4.4.2	Creation of employment opportunities	54
4.4.3	Generate income for affected landowner	54
4.4.4	Benefits associated with the socio-economic development contributions	55
4.4.5	Visual impact and impact on sense of place	56
4.4.6	Potential impact on property values.....	57
4.4.7	Potential impact on tourism.....	58
4.5	CUMULATIVE IMPACT ON SENSE OF PLACE	59
4.6	CUMULATIVE IMPACT ON LOCAL SERVICES AND ACCOMMODATION	60
4.7	CUMULATIVE IMPACT ON LOCAL ECONOMY	61
4.8	ASSESSMENT OF NO-DEVELOPMENT OPTION	62
4.9	ASSESSMENT OF DECOMMISSIONING PHASE	63
4.10	INITIAL ASSESSMENT OF POTENTIAL SIGNIFICANCE	63
4.11	CONCLUSION	64
4.12	PLAN OF STUDY FOR SIA	64
	ANNEXURE A	66
	ANNEXURE B: ASSESSMENT METHODOLOGY	67
	ANNEXURE C: CV	69
	ANNEXURE D: DECLARATION OF INDEPENDENCE	70

CONTENTS OF THE SPECIALIST REPORT – CHECKLIST

Regulation GNR 326 of 4 December 2014, as amended 7 April 2017, Appendix 6	Section of Report
(a) details of the specialist who prepared the report; and the expertise of that specialist to compile a specialist report including a <i>curriculum vitae</i> ;	Section 1.6, Annexure C
(b) a declaration that the specialist is independent in a form as may be specified by the competent authority;	Section 1.7, Annexure D
(c) an indication of the scope of, and the purpose for which, the report was prepared;	Section 1.1, Section 1.2
(cA) an indication of the quality and age of base data used for the specialist report;	Section 1.2, Section 3
(cB) a description of existing impacts on the site, cumulative impacts of the proposed development and levels of acceptable change;	Section 4
(d) the duration, date and season of the site investigation and the relevance of the season to the outcome of the assessment;	N/A for SIA
(e) a description of the methodology adopted in preparing the report or carrying out the specialised process inclusive of equipment and modelling used;	Section 1.2, Annexure B
(f) details of an assessment of the specific identified sensitivity of the site related to the proposed activity or activities and its associated structures and infrastructure, inclusive of a site plan identifying site alternatives;	Section 4, Section 5
(g) an identification of any areas to be avoided, including buffers;	N/A
(h) a map superimposing the activity including the associated structures and infrastructure on the environmental sensitivities of the site including areas to be avoided, including buffers;	Section 3
(i) a description of any assumptions made and any uncertainties or gaps in knowledge;	Section 1.5
(j) a description of the findings and potential implications of such findings on the impact of the proposed activity, including identified alternatives on the environment, or activities;	Section 4, Section 5,
(k) any mitigation measures for inclusion in the EMPr;	Section 4
(l) any conditions for inclusion in the environmental authorisation;	Section 4, Section 5
(m) any monitoring requirements for inclusion in the EMPr or environmental authorisation;	N/A
(n) a reasoned opinion— i. as to whether the proposed activity, activities or portions thereof should be authorised; iA. Regarding the acceptability of the proposed activity or activities; and ii. if the opinion is that the proposed activity, activities or portions thereof should be authorised, any avoidance, management and mitigation measures that should be included in the EMPr or Environmental Authorization, and where applicable, the closure plan;	Section 5.3
(o) a summary and copies of any comments received during any consultation process and where applicable all responses thereto; and	To be undertaken during Assessment Phase
(p) any other information requested by the competent authority	N/A
Where a government notice gazetted by the Minister provides for any protocol or minimum information requirement to be applied to a specialist report, the requirements as indicated in such notice will apply.	

ACRONYMS

BESS	Battery Energy Storage System
DEA	Department of Environmental Affairs
DEA&DP	Department of Environmental Affairs and Development Planning
DM	District Municipality
EIA	Environmental Impact Assessment
ELM	Emthanjeni Local Municipality
HD	Historically Disadvantaged
IDP	Integrated Development Plan
IPP	Independent Power Producer
kV	Kilovolts
LED	Local Economic Development
LM	Local Municipality
MW	Megawatt
NC	Northern Cape
NCPPGDS	Northern Cape Province Provincial Growth and Development Strategy
NCSDF	Northern Cape Spatial Development Framework
SEF	Solar Energy Facility
PGDS	Provincial Growth and Development Strategy
PKSDM	Pixley Ka Seme District Municipality
SDF	Spatial Development Framework
SIA	Social Impact Assessment
SIA	Social Impact Assessment

SECTION 1: INTRODUCTION

1.1 INTRODUCTION

Sharples Environmental Services cc (SES) was appointed to manage the Environmental Impact Assessment (EIA) process for the proposed Hercules PV Solar Energy Facility (SEF) Cluster located approximately 15 km south-east of the town of De Aar in the Northern Cape Province. The project site is situated within the Emthanjeni Local Municipality (ELM), which is located within the Pixley Ka Seme District Municipality (PKSDM). The PV SEF Cluster consists of eight PV SEFs, provisional named Hercules 1-8. Battery Energy Storage Systems (BESSs) are associated with each PV SEF.

Tony Barbour Environmental Consulting was appointed to undertake a specialist Social Impact Assessment (SIA) as part of an EIA process. This report contains the findings of the Scoping Level SIA for the proposed Hercules PV SEF Cluster. Separate SIAs will be undertaken for each PV SEF during the Assessment Phase.

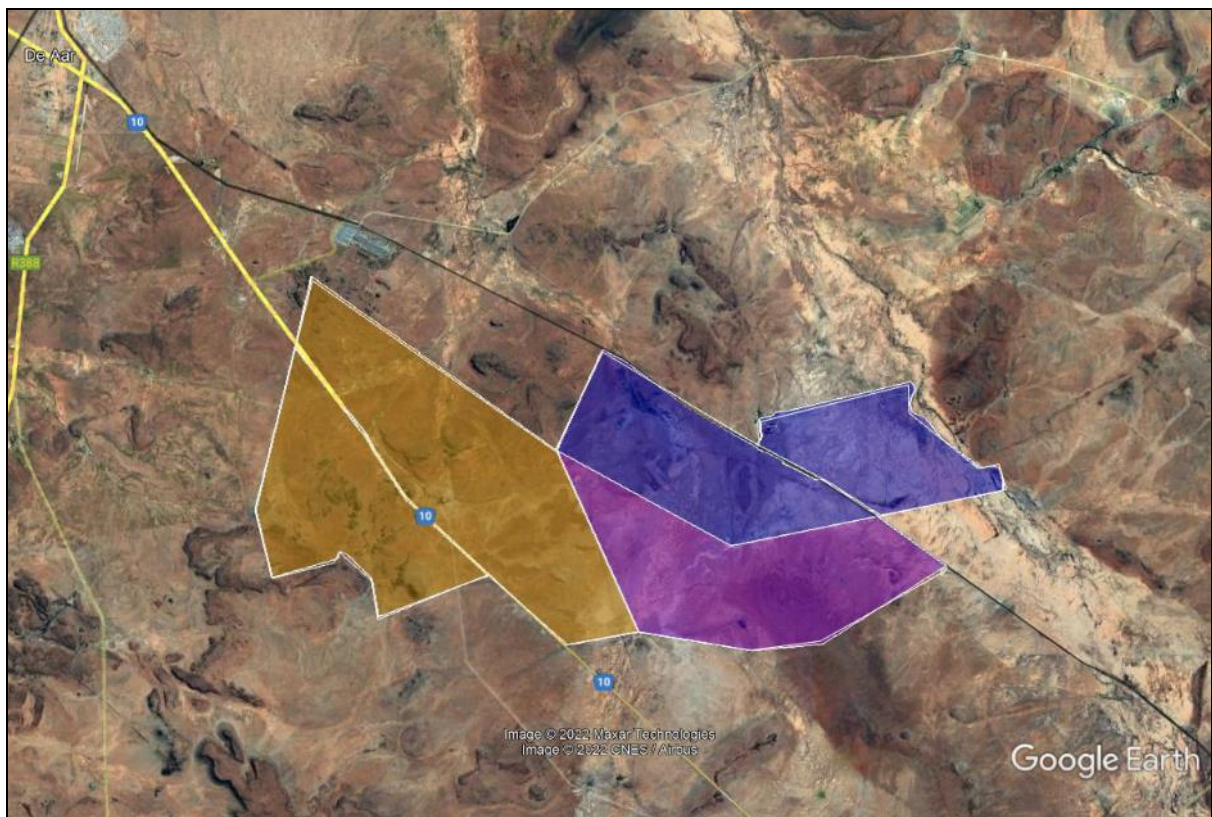


Figure 1.1: Location of Hercules PV SEF Cluster

1.2 TERMS OF REFERENCE AND APPROACH

The terms of reference for the Scoping Level SIA require:

- A description of the environment that may be affected by the activity and the manner in which the environment may be affected by the proposed development.

- A description and initial assessment of the potential social issues associated with the proposed development.
- Identification of potential enhancement and mitigation aimed at maximising opportunities and avoiding and or reducing negative impacts.

The approach to the Scoping Level SIA study is based on the Western Cape Department of Environmental Affairs and Development Planning Guidelines for Social Impact Assessment (February 2007). These guidelines are based on international best practice. The key activities in the SIA process embodied in the guidelines include:

- Describing and obtaining an understanding of the proposed intervention (type, scale, and location), the settlements, and communities likely to be affected by the proposed project.
- Collecting baseline data on the current social and economic environment.
- Identifying the key potential social issues associated with the proposed project. This requires a site visit to the area and consultation with affected individuals and communities. As part of the process a basic information document was prepared and made available to key interested and affected parties. The aim of the document was to inform the affected parties of the nature and activities associated with the construction and operation of the proposed development to enable them to better understand and comment on the potential social issues and impacts.
- Assessing and documenting the significance of social impacts associated with the proposed intervention.
- Identifying alternatives and mitigation measures.

In this regard the study involved:

- Review of socio-economic data for the study area.
- Review of relevant planning and policy frameworks for the area.
- Review of information from similar studies, including the SIAs undertaken for other renewable energy projects.
- Identification and assessment of the social issues associated with the proposed project.

The impacts and associated significance ratings will be confirmed during the Assessment Phase.

A site visit will be undertaken during the Assessment Phase of the SIA. The site visit will include interviews with interested and affected parties. Annexure A contains a list of the secondary information reviewed. Annexure B summarises the assessment methodology used to assign significance ratings to the assessment process.

1.3 PROJECT DESCRIPTION

The Mulilo Renewable Projects Developments is proposing to develop the Hercules Solar PV Cluster with a total capacity of approximately 960 MW. The PV SEF Cluster will consist of approximately 8 x "Up to 120 MW" projects, Separate Environmental Assessments (EAs) will be undertaken for each project. The projects are located on three farms, namely:

- Roode Kraal RE/28 No 28.
- Riet Fontein RE/6.
- Hartebeest Hoek RE/31.

Basic preliminary design details for each approximately 120 MW Solar PV project will include:

Solar Field

- Solar Arrays: PV modules.
- Single axis tracking technology maximum height of 5m (aligned north-south).
- Solar module mounting structures comprised of galvanised steel and aluminium.
- Foundations which will likely be drilled and concreted into the ground.
- Solar measurement and weather stations.
- Central/string Inverters and MV transformers in in field.
- DC coupled Battery Energy Storage system (BESS) containers distributed through PV field located adjacent to inverters.

Associated Infrastructure

- Medium Voltage (MV =22/33 kV) overhead powerlines and underground cables.
- MV Collector stations.
- Access roads.
- Internal gravel roads.
- Fencing.
- General maintenance area.
- Storm water channels and berms.
- Water storage tanks and pipelines.
- Temporary work area during the construction phase (i.e. laydown area).
- O&M buildings, store.
- AC coupled BESS installation (400m x 400m) at project substation and laydown area (Photograph 1.2).

Project IPP Substation

- 132kV substation 200m x 200m
- HV transformer
- Substation Control Building
- HV metering, Scada and protection building
- MV collector switchgear buildings
- Compensation equipment (Filters capacitors reactors statcoms)

The grid connection infrastructure for each project (which will be handed over to Eskom) may include:

- Onsite Switching Station (SS), adjacent to the IPP Substation.
- 132kV Overhead Power Line (OHPL) – 30m height from the switching station, with a length of <15km to a yet to be determined connection point, extension of the 132kV Busbar at the MTS, 132kV Feeder Bay at the MTS, extension of the 400kV Busbar at the MTS and Installation of a new 400/132kV Transformer and bay at the MTS.

It is the developer's intention to bid the proposed project under the Department of Mineral Resources and Energy's (DMRE's) Renewable Energy Independent Power

Producer Procurement (REIPPP) Programme (or similar programme), with the aim of evacuating the generated power into the national grid. This will aid in the diversification and stabilisation of the country's electricity supply, in line with the objectives of the Integrated Resource Plan (IRP).



Photograph 1.1: Typical PV SEF facility



Photograph 1.2: Example of BESS located in storage containers

1.4 ASSUMPTIONS AND LIMITATIONS

1.4.1 Assumptions

Identification of social issues

As indicated above, a site visit will be undertaken during the Assessment Phase of the SIA. The identification of social issues is based on the authors experience with undertaking in the region of 130 SIAs for solar and wind energy facilities and the associated infrastructure (substations, transmission lines, roads etc.). Based on this the author is confident that the majority of social issues have been identified.

Technical suitability

It is assumed that the development site represents a technically suitable site for the establishment of the proposed PV SEF Cluster and associated infrastructure.

Strategic importance of the project

The strategic importance of promoting renewable and other forms of energy is supported by the national and provincial energy policies.

Fit with planning and policy requirements

Legislation and policies reflect societal norms and values. The legislative and policy context therefore plays an important role in identifying and assessing the potential social impacts associated with a proposed development. In this regard, a key component of the SIA process is to assess the proposed development in terms of its fit with key planning and policy documents. As such, if the findings of the study indicate that the proposed development in its current format does not conform to the spatial principles and guidelines contained in the relevant legislation and planning documents, and there are no significant or unique opportunities created by the development, the development cannot be supported.

1.4.2 Limitations

Demographic data

Some of the provincial documents do not contain data from the 2011 Census and or 2016 Household Community Survey. However, where required the relevant 2011 and 2016 data has been provided.

Site visit

A site visit will be undertaken during the Assessment Phase of the SIA. The site visit will include interviews with interested and affected parties. However, as indicated above, the author is confident that the majority of social issues have been identified.

1.5 SPECIALIST DETAILS

Tony Barbour is an independent specialist with 30 years' experience in the field of environmental management. In terms of SIA experience Tony Barbour has undertaken in the region of 300 SIAs and is the author of the Guidelines for Social Impact Assessments for EIA's adopted by the Department of Environmental Affairs and Development Planning (DEA&DP) in the Western Cape in 2007. Annexure C contains a copy of CV for Tony Barbour.

1.6 DECLARATION OF INDEPENDENCE

This confirms that Tony Barbour, the specialist consultant responsible for undertaking the study and preparing the Scoping Level SIA Report, is independent and does not

have a vested or financial interest in the proposed development being either approved or rejected. Annexure D contains a copy of signed declaration of independence.

1.7 REPORT STRUCTURE

The report is divided into four sections, namely:

- Section 1: Introduction
- Section 2: Summary of key policy and planning documents relating to renewable energy and the area in question
- Section 3: Overview of the study area
- Section 4: Identification of key social issues

SECTION 2: POLICY AND PLANNING ENVIRONMENT

2.1 INTRODUCTION

Legislation and policy embody and reflect key societal norms, values, and developmental goals. The legislative and policy context therefore plays an important role in identifying, assessing, and evaluating the significance of potential social impacts associated with any given proposed development. An assessment of the “policy and planning fit¹” of the proposed development therefore constitutes a key aspect of the Social Impact Assessment (SIA). In this regard, assessment of “planning fit” conforms to international best practice for conducting SIAs.

Section 2 provides an overview of the policy and planning environment affecting the proposed project. For the purposes of meeting the objectives of the SIA the following policy and planning documents were reviewed:

- National Energy Act (2008).
- White Paper on the Energy Policy of the Republic of South Africa (December 1998).
- White Paper on Renewable Energy (November 2003).
- Integrated Resource Plan (IRP) for South Africa (2019).
- National Infrastructure Plan (NIP) (2012 and 2021).
- National Development Plan (2011).
- Astronomy Geographic Advantage Act (Act No 21 of 2007).
- Northern Cape Provincial Growth and Development Strategy (2004-2014).
- Northern Cape Climate Change Response Strategy.
- Northern Cape Spatial Development Framework (2012).
- Northern Cape Province Green Document (2017/2018).
- Pixley ka Seme District Municipality Integrated Development Plan (2019-2020).
- Pixley ka Seme District Municipality Spatial Development Framework (2017).
- Emathanjeni Local Municipality Integrated Development Plan (2021-2022).

The section also provides a review of the renewable energy sector in South Africa.

2.2 NATIONAL POLICY ENVIRONMENT

2.2.1 National Energy Act (Act No 34 of 2008)

The National Energy Act was promulgated in 2008 (Act No 34 of 2008). One of the objectives of the Act was to promote diversity of supply of energy and its sources. In this regard, the preamble makes direct reference to renewable resources, including solar and wind:

“To ensure that diverse energy resources are available, in sustainable quantities, and at affordable prices, to the South African economy, in support of economic growth and poverty alleviation, taking into account environmental management requirements (...); to provide for (...) increased generation and consumption of renewable energies...”(Preamble).

¹ Planning fit” can simply be described as the extent to which any relevant development satisfies the core criteria of appropriateness, need, and desirability, as defined or circumscribed by the relevant applicable legislation and policy documents at a given time.

2.2.2 White Paper on the Energy Policy of the Republic of South Africa

Investment in renewable energy initiatives, such as the proposed SEF, is supported by the White Paper on Energy Policy for South Africa (December 1998). In this regard, the document notes:

“Government policy is based on an understanding that renewables are energy sources in their own right, are not limited to small-scale and remote applications, and have significant medium and long-term commercial potential”.

“Renewable resources generally operate from an unlimited resource base and, as such, can increasingly contribute towards a long-term sustainable energy future”.

The support for renewable energy policy is guided by a rationale that South Africa has a very attractive range of renewable resources, particularly **solar** and wind and that renewable applications are in fact the least cost energy service in many cases; more so when social and environmental costs are taken into account.

Government policy on renewable energy is thus concerned with meeting the following challenges:

- Ensuring that economically feasible technologies and applications are implemented;
- Ensuring that an equitable level of national resources is invested in renewable technologies, given their potential and compared to investments in other energy supply options; and,
- Addressing constraints on the development of the renewable industry.

The White Paper also acknowledges that South Africa has neglected the development and implementation of renewable energy applications, despite the fact that the country’s renewable energy resource base is extensive, and many appropriate applications exist.

2.2.3 White Paper on Renewable Energy

The White Paper on Renewable Energy (November 2003) (further referred to as the White Paper) supplements the *White Paper on Energy Policy*, which recognizes that the medium and long-term potential of renewable energy is significant. This Paper sets out Government’s vision, policy principles, strategic goals and objectives for promoting and implementing renewable energy in South Africa.

The White Paper notes that while South Africa is well endowed with renewable energy resources that have the potential to become sustainable alternatives to fossil fuels, these have thus far remained largely untapped. As signatory to the Kyoto Protocol², Government is determined to make good the country’s commitment to reducing greenhouse gas emissions. To this purpose, Government has committed itself to the development of a framework in which a national renewable energy framework can be established and operate.

² The Kyoto Protocol is a protocol to the United Nations Framework Convention on Climate Change (UNFCCC), aimed at fighting global warming. The UNFCCC is an international environmental treaty with the goal of achieving "stabilization of greenhouse gas concentrations in the atmosphere at a level that would prevent dangerous anthropogenic interference with the climate system". The Protocol was initially adopted on 11 December 1997 in Kyoto, Japan and entered into force on 16 February 2005. As of November 2009, 187 states have signed and ratified the protocol (Wikipedia).

South Africa is also a signatory of the Copenhagen Accord, a document that delegates at the 15th session of the Conference of Parties (COP 15) to the United Nations Framework Convention on Climate Change agreed to "take note of" at the final plenary on 18 December 2009. The accord endorses the continuation of the Kyoto Protocol and confirms that climate change is one of the greatest challenges facing the world. In terms of the accord South Africa committed itself to a reduction target of 34% compared to business as usual. In this regard, the IRP 2010 aims to allocate 43% of new energy generation facilities in South Africa to renewables.

Apart from the reduction of greenhouse gas emissions, the promotion of renewable energy sources is aimed at ensuring energy security through the diversification of supply (in this regard, also refer to the objectives of the National Energy Act).

Government's long-term goal is the establishment of a renewable energy industry producing modern energy carriers that will offer in future years a sustainable, fully non-subsidised alternative to fossil fuels.

2.2.4 Integrated Resource Plan (2019)

South Africa's National Development Plan (NDP) 2030 offers a long-term plan for the country. It defines a desired destination where inequality and unemployment are reduced, and poverty is eliminated so that all South Africans can attain a decent standard of living. Electricity is one of the core elements of a decent standard of living. In formulating its vision for the energy sector, the NDP took as a point of departure the Integrated Resource Plan (IRP) 2010–2030 promulgated in March 2011. The IRP is an electricity infrastructure development plan based on least-cost electricity supply and demand balance, taking into account security of supply and the environment (minimize negative emissions and water usage).

On 27 August 2018, the then Minister of Energy published a draft IRP which was issued for public comment (Draft IRP). Following a lengthy public participation and consultation process the Integrated Resource Plan 2019 (IRP 2019) was gazetted by the Minister of Mineral Resources and Energy, Gwede Mantashe, on 18 October 2019, updating the energy forecast for South Africa from the current period to the year 2030. The IRP is an electricity capacity plan which aims to provide an indication of the country's electricity demand, how this demand will be supplied and what it will cost.

The IRP notes that South Africa is a signatory to the Paris Agreement on Climate Change and has ratified the agreement. The energy sector contributes close to 80% towards the country's total Green House Gas (GHG) emissions of which 50% are from electricity generation and liquid fuel production alone. A transmission from a fossil fuel-based energy sources is therefore critical to reducing GHG emissions. In September 2021 South Africa released its latest emission targets, indicating that it intended to limit Green House Gas (GHG) emissions to 398-510 MrCo2e by 2025, and 350-420 MrCo2e by 2030. These emissions are significantly lower than 2016 emission targets and will see South Africa's emissions decline in absolute terms from 2025, a decade earlier than planned (World Resource Institute, 2021).

The IRP (2019) notes that 39 730 MW of new generation capacity must be developed. Of the 39 730 MW determined, about 18 000 MW has been committed to date. This new capacity is made up of 6 422 MW under the REIPPP with a total of 3 876 MW operational on the grid. Under the Eskom build programme, the following capacity has been commissioned: 1 332MW of Ingula pumped storage, 1 588MW of Medupi, 800MW of Kusile and 100MW of Sere Wind Farm. In addition, IPPs have commissioned 1

005MW from two Open Cycle Gas Turbine (OCGT) peaking plants.1 005 MW from OCGT for peaking has also been commissioned (IRP 2019, page 14).

In terms of IRP (2019) provision has been made for the following new additional capacity by 2030:

- 1 500MW of coal.
- 2 500MW of hydro.
- 6 000MW of solar PV.
- 14 400MW of wind.
- 1 860MW of nuclear.
- 2 088MW for storage.
- 3 000MW of gas/diesel.
- 4 000MW from other distributed generation, co-generation, biomass and landfill technologies.

Figure 2.1 provides a summary of the allocations and commitments between the various energy sectors.

	Coal	Coal (Decommissioning)	Nuclear	Hydro	Storage	PV	Wind	CSP	Gas & Diesel	Other (Distributed Generation, CoGen, Biomass, Landfill)
Current Base	37,149		1 860	2,100	2 912	1 474	1 980	300	3 830	499
2019	2,155	-2,373					244	300		Allocation to the extent of the short term capacity and energy gap.
2020	1,433	-557				114	300			
2021	1,433	-1403				300	818			
2022	711	-844			513	400	1,000	1,600		
2023	750	-555				1000	1,600		500	
2024			1,860				1,600	1000	500	
2025						1000	1,600		500	
2026		-1,219					1,600		500	
2027	750	-847					1,600	2000	500	
2028		-475				1000	1,600		500	
2029		-1,694			1575	1000	1,600		500	
2030		-1,050		2,500		1000	1,600		500	
TOTAL INSTALLED CAPACITY by 2030 (MW)	33,364		1,860	4,600	5,000	8,288	17,742	600	6,380	
% Total Installed Capacity (% of MW)	43		2.36	5.84	6.35	10.52	22.53	0.76	8.1	
% Annual Energy Contribution (% of MWh)	58.8		4.5	8.4	1.2*	6.3	17.8	0.6	1.3	

<ul style="list-style-type: none"> Installed Capacity Committed/Already Contracted Capacity Capacity Decommissioned New Additional Capacity Extension of Koeberg Plant Design Life Includes Distributed Generation Capacity for own use 	<ul style="list-style-type: none"> • 2030 Coal Installed Capacity is less capacity decommissioned between years 2020 and 2030. • Koeberg power station rated/installed capacity will revert to 1,926MW (original design capacity) following design life extension work. • Other/ Distributed generation includes all generation facilities in circumstances in which the facility is operated solely to supply electricity to an end-use customer within the same property with the facility. • Short term capacity gap is estimated at 2,000MW.
---	--

Figure 2.1: Summary of energy allocations and commitments based on the 2019 IRP

As indicated above, the changes from the Draft IRP capacity allocations see an increase in solar PV and wind, and a significant decrease in gas and diesel; and new inclusions include nuclear and storage.

In terms of renewable energy five bidding rounds have been completed for renewable energy projects under the RE IPP Procurement Programme. The most dominant

technology in the IRP2019 is renewable energy from wind and solar PV technologies, with wind being identified as the stronger of the two technologies. There is a consistent annual allocation of 1 600MW for wind technology commencing in the year 2022 up to 2030. The solar PV allocation of 1 000MWs per year is incremental over the period 2022 to 2030, with no allocation in the years 2024 (being the year the Koeberg nuclear extension is expected to be commissioned) and the years 2026 and 2027 (presumably since 2 000MW of gas is expected in the year 2027). The IRP 2019 states that although there are annual build limits, in the long run such limits will be reviewed to take into account demand and supply requirements.

2.2.5 National Development Plan

The National Development Plan (NDP) contains a plan aimed at eliminating poverty and reducing inequality by 2030. The NDP identifies 9 key challenges and associated remedial plans. Managing the transition towards a low carbon national economy is identified as one of the 9 key national challenges. Expansion and acceleration of commercial renewable energy is identified as a key intervention strategy.

2.2.6 The New Growth Path Framework

The aim of the New Economic Growth Path Framework is to enhance growth, employment creation and equity. Central to the New Growth Path is a massive investment in infrastructure as a critical driver of jobs across the economy. In this regard, the framework identifies investments in five key areas namely: energy, transport, communication, water, and housing.

The New Growth Path also identifies five other priority areas as part of the programme, through a series of partnerships between the State and the private sector. The Green Economy as one of the five priority areas to create jobs, including expansions in construction and the production of technologies for solar, wind and biofuels. In this regard, clean manufacturing and environmental services are projected to create 300 000 jobs over the next decade.

2.2.7 National Infrastructure Plan

Government adopted a National Infrastructure Plan (NIP) in 2012. The aim of the plan is to transform the economic landscape while simultaneously creating significant numbers of new jobs and strengthening the delivery of basic services. The aim of the NIP is support investments is to improve access by South Africans to healthcare facilities, schools, water, sanitation, housing and electrification. The plan also notes that investment in the construction of ports, roads, railway systems, **electricity plants**, hospitals, schools, and dams will contribute to improved economic growth.

As part of the National Infrastructure Plan, Cabinet established the Presidential Infrastructure Coordinating Committee (PICC). The Committee identified and developed 18 strategic integrated projects (SIPs). The SIPs cover social and economic infrastructure across all nine provinces (with an emphasis on lagging regions) and included three energy SIPs, namely SIP 8, 9 and 10.

- SIP 8: Green energy in support of the South African economy.
- SIP 9: Electricity generation to support socio-economic development.
- SIP 10: Electricity transmission and distribution for all.

The NIP 2050 was gazetted for public comment on 10 August 2021³. The first phase of the NIP 2050 focuses on four critical network sectors that provide a platform, namely, energy, freight transport, water, and digital infrastructure. In line with the NDP, the vision for the energy sector is to promote:

- Economic growth and development through adequate investment in energy infrastructure” (generation, transmission, and distribution) and reliable and efficient energy service at competitive rates, while supporting economic growth through job creation by stimulating supply chains.
- Social equity through expanded access to energy at affordable tariffs and through targeted, sustainable subsidies for needy households.
- Environmental sustainability through efforts to reduce pollution, reduce water usage and mitigate the effects of climate change.

The NIP 2050 notes that by 2030, the NDP set a target that more than 90% of the population should enjoy access to grid connected or off-grid electricity by 2030. To realise this vision, South Africa's energy system will be supported by effective policies, institutions, governance systems, regulation and, where appropriate, competitive markets. In terms of energy mix, NIP 2050 notes that coal will contribute significantly less to primary-energy needs in the future, while gas will have an important enabling role, energy supply will be **increasingly dominated by renewable energy resources– especially wind and solar which are least cost and where South Africa has a comparative advantage.**

NIP 2050 also notes that South Africa is signatory of the Paris Agreement which aims to achieve Net Zero greenhouse gas emissions by 2050. To achieve this will require a shift to a least cost energy path that is increasingly reliant on renewables. For South Africa this is imperative for the following reasons:

- SA cannot afford to overspend while dramatically expanding capacity
- Renewables can be built quickly and in modular form thereby avoiding many of the challenges associated with mega projects.
- Trade partners are expected to increasingly impose border carbon taxes harming SA exports.
- SA will need to commit to emission reductions as a global citizen.

2.2.8 Astronomy Geographic Advantage Act

The purpose of the Act (Act No 21 of 2007) is to preserve the geographic advantage areas that attract investment in astronomy. The entire Northern Cape Province, excluding the Tsantsabane Municipality, has been declared an astronomy advantage area. The Northern Cape optical and radio telescope sites were declared core astronomy advantage areas. The Act allowed for the declaration of the Southern Africa Large Telescope (SALT), Meerkat and Square Kilometre Array (SKA) as astronomy and related scientific endeavours that has to be protected.

2.3 PROVINCIAL AND LOCAL LEVEL POLICY AND PLANNING

2.3.1 Northern Cape Province Provincial Growth and Development Strategy

The Northern Cape Provincial Growth and Development Strategy (NCPGDS) identifies poverty reduction as the most significant challenge facing the government and its partners. All other societal challenges that the province faces emanate predominantly

³ Gazette No. 44951

from the effects of poverty. The NCPGDS notes that the only effective way to reduce poverty is through long-term sustainable economic growth and development. The sectors where economic growth and development can be promoted include:

- Agriculture and Agro-processing.
- Fishing and Mariculture.
- Mining and mineral processing.
- Transport.
- Manufacturing.
- Tourism.

However, the NCPGDS also notes that economic development in these sectors also requires:

- Creating opportunities for lifelong learning.
- Improving the skills of the labour force to increase productivity.
- Increasing accessibility to knowledge and information.

The achievement of these primary development objectives depends on the achievement of a number of related objectives that, at a macro-level, describe necessary conditions for growth and development. These are:

- Developing requisite levels of human and social capital.
- Improving the efficiency and effectiveness of governance and other development institutions.
- Enhancing infrastructure for economic growth and social development.

Of specific relevance to the SIA the NCPGDS makes reference to the need to ensure the availability of inexpensive energy. The section notes that in order to promote economic growth in the Northern Cape the availability of electricity to key industrial users at critical localities at rates that enhance the competitiveness of their industries must be ensured. At the same time, the development of new sources of energy through the promotion of the adoption of energy applications that display a synergy with the province's natural resource endowments must be encouraged. In this regard the NCPGDS notes "the development of energy sources such as solar energy, the natural gas fields, bio-fuels, etc., could be some of the means by which new economic opportunity and activity is generated in the Northern Cape". The NCPGDS also highlights the importance of close co-operation between the public and private sectors in order for the economic development potential of the Northern Cape to be realised.

The NCPGDS also highlights the importance of enterprise development and notes that the current level of private sector development and investment in the Northern Cape are low. In addition, the province also lags in the key policy priority areas of SMME Development and Black Economic Empowerment. The proposed solar energy facility therefore has the potential to create opportunities to promote private sector investment and the development of SMMEs in the Northern Cape Province.

In this regard, care will need to be taken to ensure that the proposed development and associated renewable energy facilities do not negatively impact on the regions natural environment. In this regard, the NCPGDS notes that the sustainable utilisation of the natural resource base on which agriculture depends is critical in the Northern Cape with its fragile eco-systems and vulnerability to climatic variation. The document also indicates that due to the provinces exceptional natural and cultural attributes, it has the potential to become the preferred adventure and ecotourism destination in South Africa.

2.3.2 Northern Cape Provincial Spatial Development Framework

Northern Cape Provincial Spatial Development Framework (NCSDF) (2012) lists a number of sectoral strategies and plans that are to be read and treated as key components of the PSDF. Of these there are a number that are relevant to the proposed STPs. These include:

- Sectoral Strategy 1: Provincial Growth and Development Strategy of the Provincial Government.
- Sectoral Strategy 2: Comprehensive Growth and Development Programme of the Department of Agriculture, Land Reform and Rural Development.
- Sectoral Strategy 5: Local Economic Development (LED) Strategy of the Department of Economic Development and Tourism.
- Sectoral Strategy 11: Small Micro Medium Enterprises (SMME) Development Strategy of the Department of Economic Development and Tourism.
- Sectoral Strategy 12: Tourism Strategy of the Department of Economic Development and Tourism.
- Sectoral Strategy 19: Provincial renewable energy strategy (to be facilitated by the Department of Economic Development and Tourism).

Section C8.2.3, Energy Objectives, sets out the energy objectives for the Northern Cape Province. The section makes specific reference to renewable energy. Of relevance the objectives include:

- Promote the development of renewable energy supply schemes. Large-scale renewable energy supply schemes are strategically important for increasing the diversity of domestic energy supplies and avoiding energy imports while minimizing detrimental environmental impacts.
- In order to reinforce the existing transmission network and to ensure a reliable electricity supply in the Northern Cape, construct a 400 kV transmission power line from Ferrum Substation (near Kathu/Sishen) to Garona Substation (near Groblershoop). There is a national electricity supply shortage, and the country is now in a position where it needs to commission additional plants urgently. Consequently, renewable energy projects are a high priority.
- Develop and institute innovative new energy technologies to improve access to reliable, sustainable, and affordable energy services with the objective to realize sustainable economic growth and development. The goals of securing supply, providing energy services, tackling climate change, avoiding air pollution, and reaching sustainable development in the province offer both opportunities and synergies which require joint planning between local and provincial government as well as the private sector.
- Develop and institute energy supply schemes with the aim to contribute to the achievement of the targets set by the White Paper on Renewable Energy (2003). This target relates to the delivery of 10 000 GWh of energy from renewable energy sources (mainly biomass, wind, solar, and small-scale hydro) by 2013.

Section C8.3.3, Energy Policy, sets out the policy guidelines for the development of the energy sector, with specific reference to the renewable energy sector.

- The construction of telecommunication infrastructure must be strictly regulated in terms of the spatial plans and guidelines put forward in the PSDF. They must be carefully placed to avoid visual impacts on landscapes of significant symbolic, aesthetic, cultural or historic value and should blend in with the surrounding environment to the extent possible.

- EIAs undertaken for such construction must assess the impacts of such activities against the directives listed in (a) above.
- Renewable energy sources such as wind, solar, thermal, biomass and domestic hydroelectricity are to constitute 25% of the province's energy generation capacity by 2020.
 - The following key policy principles for renewable energy apply.
 - Full cost accounting: Pricing policies will be based on an assessment of the full economic, social and environmental costs and benefits of energy production and utilisation.
 - Equity: There should be equitable access to basic services to meet human needs and ensure human well-being. Each generation has a duty to avoid impairing the ability of future generations to ensure their own well-being.
 - Global and international cooperation and responsibilities: Government recognises its shared responsibility for global and regional issues and act with due regard to the principles contained in relevant policies and applicable regional and international agreements.
 - Allocation of functions: Government will allocate functions within the framework of the Constitution to competent institutions and spheres of government that can most effectively achieve the objectives of the energy policy.
 - The implementation of sustainable renewable energy is to be promoted through appropriate financial and fiscal instruments.
 - An effective legislative system to promote the implementation of renewable energy is to be developed, implemented, and continuously improved.
 - Public awareness of the benefits and opportunities of renewable energy must be promoted.
 - The development of renewable energy systems is to be harnessed as a mechanism for economic development throughout the province in accordance with the Sustainable Development Initiative (SDI) approach (refer to Toolkit D10) or any comparable approach.
 - Renewable energy must, first, and foremost, be used to address the needs of the province before being exported.

2.2.3 Northern Cape Climate Change Response Strategy

The key aspects of the PCCRS Report are summarised in the MEC's (NCPG: Environment and Nature Conservation) 2011 budget speech: "The Provincial Climate Change Response Strategy will be underpinned by specific critical sector climate change adaptation and mitigation strategies that include the Water, Agriculture and Human Health sectors as the 3 key Adaptation Sectors, the Industry and Transport alongside the Energy sector as the 3 key Mitigation Sectors with the Disaster Management, Natural Resources and Human Society, livelihoods and Services sectors as 3 remaining key Sectors to ensure proactive long term responses to the frequency and intensity of extreme weather events such as flooding and wild fire, with heightened requirements for effective disaster management".

Key points from MEC's address include the NCPG's commitment to develop and implement policy in accord with the National Green Paper for the National Climate Change Response Strategy (2010), and an acknowledgement of the NCP's extreme vulnerability to climate-change driven desertification. The development and promotion of a provincial green economy, including green jobs, is identified as an important provincial intervention in addressing climate change. The renewable energy sector, including solar and wind energy (but also biofuels and energy from waste), is explicitly indicated as an important element of the Provincial Climate Change Response Strategy. The MEC also indicated that the NCP was involved in the processing a number of WEF and Solar Energy Facility EIA applications.

2.2.4 Northern Cape Province Green Document

The NCP Green Document (2017-2018) was prepared by the Northern Cape Department of Economic Development and Tourism and provides an impact assessment of IPPs on the communities in the province located within a 50 km radius from existing facilities. The document notes that the NCP is nationally a leader in commercial-scale renewable energy projects. By 2018 a total of 23 IPP projects in the province had been integrated into the national grid. These projects include Solar PV, Concentrated Solar and WEFs. The document notes that through their economic development obligations these projects have already made a significant positive contribution to affected communities. Much of the effort has been directed at supporting local education. The document also notes that, as these projects are committed to 20-year minimum lifespans, the collectively hold a tremendous potential for socio-economic upliftment.

Key issues identified with regard to improving the potential beneficial impact of IPPs in the NCP include:

- Local community members abusing project benefits for personal gain.
- Difficulty in outreach to local community beneficiaries due to high local illiteracy levels.
- A lack of business skills generally hampers the successful establishment of local small enterprises which could benefit from projects.
- Community benefit obligations are currently met in a piecemeal and uncoordinated fashion.
- Anticipated community benefits are often frustrated by inadequate engagement and insufficient ongoing consultation.
- The scarcity of people skilled in maths and sciences in local communities hampers meaningful higher-level local skills development and employment.
- Insufficient support from local municipalities for IPP development.

2.3.4 Pixley ka Seme District Municipality Integrated Development Plan

The vision for the PKSDM is "Developed and Sustainable District for Future Generations"

To mission statement that underpins the vision is:

- Supporting our local municipalities to create a home for all in our towns, settlements and rural areas to render dedicated services.
- Providing political and administrative leadership and direction in the development planning process.
- Promoting economic growth that is shared across and within communities.
- Promoting and enhancing integrated development planning in the operations of our municipalities.
- Aligning development initiatives in the district to the National Development Plan.

The Strategic Objectives to address the vision that are relevant to the project includes the promotion of economic growth in the district and enhance service delivery. Chapter 4, Development of Strategies, highlights the key strategies of the PKSDM. The promotion of economic development is the most relevant strategy for the project. The IDP also notes that the growth and development context in the district has also changed radically since 2013 (after it had been stagnant for decades) owing mainly to private and public investments in the area as a hub for renewable energy generation and astronomy.

The IDP notes that the economy in the Pixley ka Seme municipal area is characterized by:

- High levels of poverty and low levels of education.
- Low levels of development despite the strategic location in terms of the national transport corridors.
- High rate of unemployment, poverty and social grant dependence.
- Prone to significant environmental changes owing to long-term structural changes (such as climate change, energy crises and other shifts).

Of specific relevance the IDP highlights the potential for renewable energy to help address some of these challenges.

2.3.5 Pixley ka Seme District Municipality Spatial Development Framework

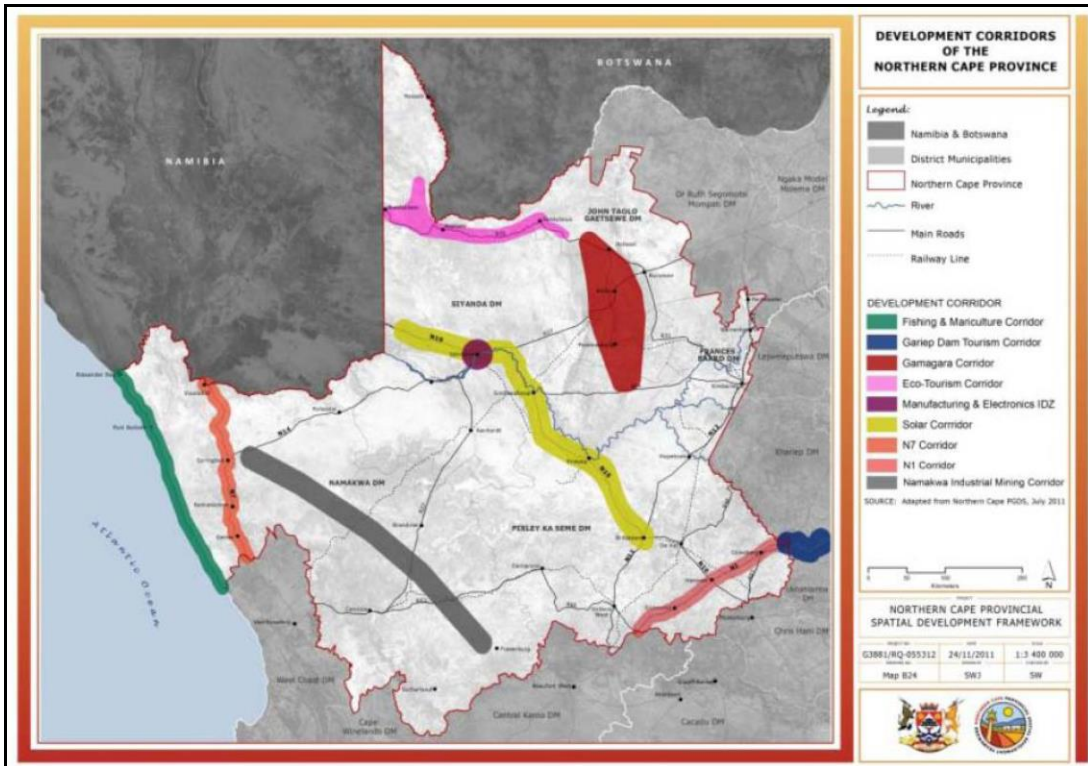
The SDF notes that the vision for the PKSDM is “Pixley Ka Seme DM, pioneers of development, a home and future for all”. The Mission Statement that underpins the vision refers to:

- Effective and efficient service delivery.
- Optimal human and natural resource development.
- Local economic growth and development, job creation and poverty alleviation.
- A vibrant tourism industry.
- To participate in the fight to reduce the infection rate and lessen the impact of HIV/ Aids and other communicable diseases.
- A safe, secure and community friendly environment.

The SDF identifies the opportunities and constraints associated with the district. Of relevance to the project the opportunities include:

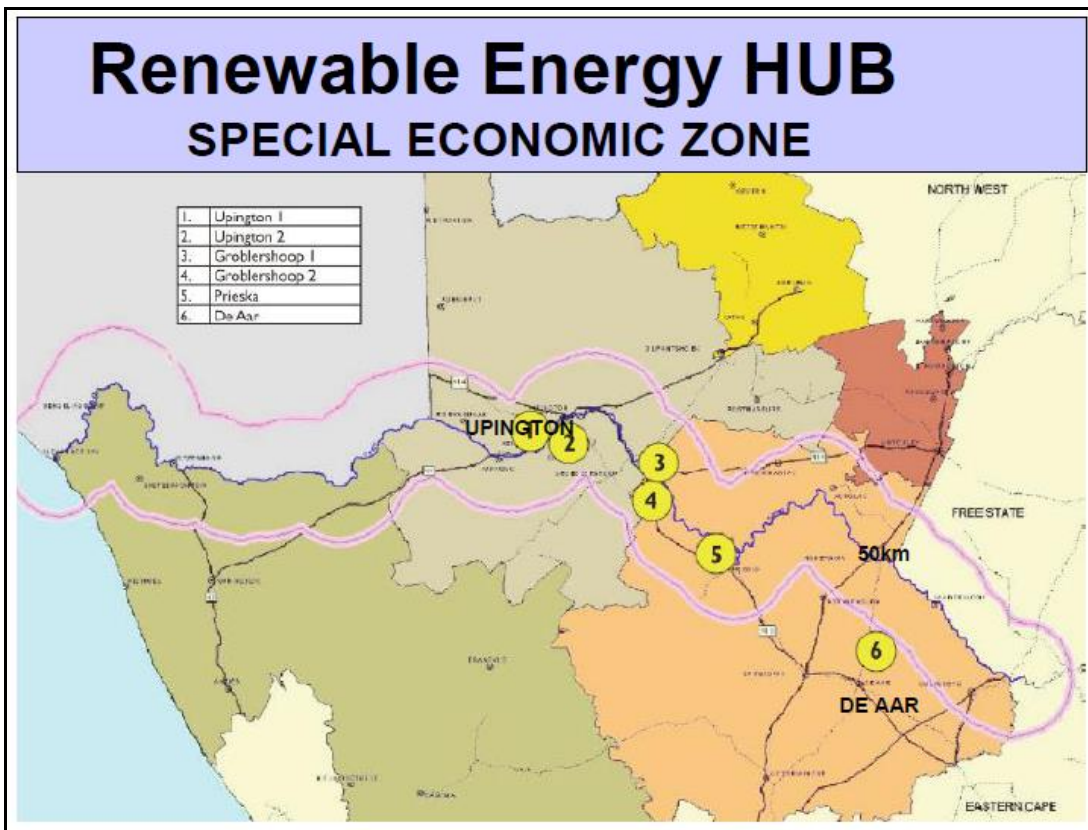
Renewable Energy and the identification of a renewable energy hub in the region. The natural environment and maintenance and conservation of the pristine natural environment to support sustainable farming into the future is also identified as an opportunity. The SDF notes that Pixley Ka Seme District area with its abundance of sunshine and vast tracts of available land has attracted considerable interest from solar energy investors. The high solar index of the area provides many opportunities in terms of the development of renewable energy. This has been acknowledged by the Northern Cape Government with the identification of the Renewable Energy Hub. The areas around the northern and eastern borders of the Pixley Ka Seme District Municipality form part of this hub with the potential to stimulate special economic development zoned within the area that have the potential to stimulate industrial development.

The PKSDM also falls within the Solar Development Corridor as identified in the Northern Cape Provincial Spatial Development Framework. The corridor extends from Kakamas to Upington and down to De Aar in the south-east (Figure 2.2). Section 5.6.1 of the SDF also refers to the establishment of a Renewable Energy Hub proposed for the Northern Cape stretching from the west coast right up to the De Aar region (Figure 2.3). The Hub can accommodate special economic development within the zone as earmarked and entails a 100km wide zone. The proposed project is located within the corridor and proposed hub.



Source: Northern Cape SDF

Figure 2.2: Northern Cape Development Corridors-Solar Corridor (yellow)



Source: Northern PKSDM SDF

Figure 2.3: Northern Cape Renewable Energy Hub

The SDF does however also note that the area is known for its clean air and open skies with limited light pollution. Potential visual impacts are therefore an issue that needs to be considered.

In this regard the SDF notes that the topography of Pixley Ka Seme region is one of its main assets with vast open spaces and unspoilt panoramic visual vistas stretching over great distances. This asset makes for excellent scenic drives throughout the whole of the region from the flat plains to crossing the main rivers of South Africa. Visual vistas, ridges and “koppies” are assets within the region and they must be handled with sensitivity.

The relevant constraints include high levels of poverty and unemployment, backlog in basic services, including electricity and housing in rural areas, the limited supply of water and overall scarcity of water in the region to support economic development.

The development challenges that face the Pixley Ka Seme District Municipality include high unemployment and poverty rates and low income which are placing increasing demand on service delivery because very few people are able to pay for services. Declining population numbers, and alcohol and substance abuse are also key challenges.

In terms of services, inadequate schools in farming areas results in children having to travel long distances to areas where they go to school. There are also insufficient health centres and lack of amenities and recreational services. Where these services do exist, they are often poorly managed and maintained. The level of key services, such as refuse removal, are also low, while many rural and a number of urban households rely on boreholes for their water supply.

Climate change is also identified as a key risk. The SDF notes that the Karoo is predicted to experience more drought periods, coupled with increased evaporation and temperatures and this will negatively impact already restricted water supply. It is likely that the greatest impacts will be on water supply.

2.3.6 Emthanjeni Local Municipality Integrated Development Plan

The Emthanjeni Local Municipality (ELM) is a category B municipality consisting of three towns, namely, De Aar, Britstown and Hanover. The vision of the ELM is “Leading sustainable development for inclusive economic growth”. The mission statement linked to the vision is “To create a viable economic development plan that is relevant to the characteristics of the Emthanjeni Municipal area, designed to create and maintain a sound and healthy local economy, drawing upon local strengths and resources. This will be achieved through:

- Strategic partnerships and collaboration.
- Effective stakeholder communications.
- Supporting existing businesses and encourage the expansion and repositioning of desirable commercial and industrial uses.
- To increase the number of farms or agricultural land in the community.

The IDP refers to the national economic pillars adopted on the National Framework for Local Economic Development in South Africa which launched in 2014. The pillars are aligned to the main thrusts and opportunities within ELM to ensure an integrated approach for optimal rate of implementation and economic development in the municipality. The five pillars are:

- Pillar 1: Building a Diverse Economic Base.
- Pillar 2: Developing learning and skilful economies.
- Pillar 3: Developing Inclusive Economies.
- Pillar 4: Enterprise Development and Support.
- Pillar 5: Economic Governance and Infrastructure.

Pillars 1, 2, 3 and 4 are relevant to the proposed development.

Pillar 1: Building a Diverse Economic Base

The first pillar focuses on building a diverse economic base and growing the local economy through industrial and sector-specific (e.g., Tourism, Mining, Agriculture, Manufacturing, etc.).

Pillar 2: Developing learning and skilful economies

The IDP notes that addressing the skills gap and improving skills levels is critical to the to the successful implementation of all the other pillars, as increased skills lead to increased opportunities for stimulating local economies.

Pillar 3: Developing Inclusive Economies

Creating decent work and sustainable livelihoods improves the living standards and ensures a dignified existence for individuals.

Pillar 4: Enterprise Development and Support

The IDP highlights the importance of supporting economic development and creating a diverse economic sector. The need to support SMMEs is also noted.

The development of the project will support these pillars, specifically the SED and ED spend linked to the project. The IDP also lists 7 Key Performance Areas (KPAs) of which KPA 1: Basic Services and Infrastructure Development, KPA 5: Local Economic Development and KPA 7: Social Development, are relevant to the project.

The IDP highlights the importance to the renewable energy sector and refers to a number of IPP projects located in the ELM and PKSDM.

2.4 OVERVIEW RENEWABLE ENERGY SECTOR IN SOUTH AFRICA

The section below provides an overview of the potential benefits associated with the renewable energy sector in South Africa. Given that South Africa supports the development of renewable energy at national level, the intention is not to provide a critical review of renewable energy. The focus is therefore on the contribution of renewable energy, specifically in terms of supporting economic development.

The following documents were reviewed:

- Independent Power Producers Procurement Programme (IPPPP): An Overview (December 2021), Department of Energy, National Treasury and DBSA.
- Green Jobs Study (2011), IDC, DBSA Ltd and TIPS.
- Powering the Future: Renewable Energy Roll-out in South Africa (2013), Greenpeace South Africa.
- WWF SA, Renewable Energy Vision 2030, South Africa, 2014.
- Jacqueline M. Borel-Saladin, Ivan N. Turok, (2013). The impact of the green economy on jobs in South Africa), South African Journal of Science, *Volume 109 /Number 9/10, September/October 2013.*
- The potential for local community benefits from wind farms in South Africa, Louise Tait (2012), Master’s Thesis, Energy Research Centre University of Cape Town.

2.4.1 Independent Power Producers Procurement Programme (IPPPP): An Overview

The document presents an overview of the Renewable Energy Independent Power Producer Procurement Programme (REIPPPP) undertaken by the Department of Energy, National Treasury, and the Development Bank of South Africa in December 2021. The programme's primary mandate is to secure electrical energy from the private sector for renewable and non-renewable energy sources. With regard to renewables, the programme is designed to reduce the country's reliance on fossil fuels, stimulate an indigenous renewable energy industry and contribute to socio-economic development and environmentally sustainable growth. The IPPPP has been designed not only to procure energy but has also been structured to contribute to the broader national development objectives of job creation, social upliftment and broadening of economic ownership.

The Integrated Resource Plan for electricity (IRP) provides South Africa's long-term plan for electricity generation. It primarily aims to ensure security of electricity supply, minimise the cost of that supply, limit water usage and reduce greenhouse gas (GHG) emissions, while allowing for policy adjustment in support of broader socio-economic developmental imperatives. The IRP 2019 was promulgated in October 2019 and replaced the IRP 2010 as the country's official electricity infrastructure plan.

It calls for 37 696MW of new and committed capacity to be added between 2019 and 2030 from a diverse mix of energy sources and technologies as ageing coal plants are decommissioned and the country transitions to a larger share of renewable energy. By 2030, the electricity generation mix is set to comprise of 33 364MW (42.6%) coal, 17 742MW (22.7%) wind, 8 288MW (10.6%) solar photovoltaic (PV), 6 830MW (8.7%) gas or diesel, 5 000MW (6.4%) energy storage, 4 600MW (5.9%) hydro, 1 860MW (2.4%) nuclear and 600MW (0.8%) concentrating solar power (CSP). Additionally, a short-term gap at least 2000MW is to be filled between 2019 and 2022, thereby further raising new capacity requirements, while distributed or embedded generation for own-use is positioned to add 4 000MW between 2023 and 2030. The IRP is intended to be frequently updated, which could impact future capacity allocations from various energy sources and technologies.

Energy supply

By the end of December 2021, the REIPPPP had made the following significant impacts.

- 6 323 MW of electricity had been procured from 92 RE Independent Power Producers (IPPs) in BW1-4.
- 5 661 MW of electricity generation capacity from 85 IPP projects has been connected to the national grid.
- 71 073GWh of energy has been generated by renewable energy sources procured under the REIPPPP since the first project became operational in November 2013.

Renewable energy IPPs have proved to be very reliable. Of the 85 projects that have reached COD, 77 projects have been operational for longer than a year. The energy generated over the past 12-month period for these 77 projects is 14 117GWh, which is 95% of their annual energy contribution projections (P50) of 14 924GWh over a 12-month delivery period. Thirty-one (31) of the 77 projects (40%) have individually exceeded their P50 projections.

Comparatively, the following statistics were presented at the REIPPPP Bid Window 6 Bidders Conference on 7 July 2022 by the IPP Office based on data as of March 2022 following seven bid rounds (IPP Office, 2022⁴):

- 92 IPPs have been selected as preferred bidders.
- 6 323 MW of electricity capacity procured.
- 5 826 MW already operational from 87 IPPs.
- 74 805 GWh energy generated by Renewable Energy sources.

Energy costs

In line with international experience, the price of renewable energy is increasingly cost competitive when compared with conventional power sources. The REIPPPP has effectively captured this global downward trend with prices decreasing in every bid window. Energy procured by the REIPPPP is progressively more cost effective and has approached a point where the wholesale pricing for new coal-and renewable-generated energy intersect.

Through the competitive bidding process, the IPPPPP effectively leveraged rapid, global technology developments and price trends, buying clean energy at lower and lower rates with every bid cycle, resulting in SA getting the benefit of renewable energy at some of the lowest tariffs in the world. The price for wind power has dropped by 50% to R0.94/kWh, while solar PV has dropped with 75% to R1.14/kWh between BW1 and BW4.

Prices contracted under the REIPPPP for all technologies are well below the published REFIT prices. The REIPPPP has effectively translated policy and planning into delivery of clean energy at very competitive prices. As such it is contributing to the national aspirations of secure, affordable energy, lower carbon intensity and a transformed 'green' economy.

with the BW4 price directly comparable with the per kWh price of new coal generation. Solar PV has dropped most significantly with a price decrease of 75% to R1.10/kWh between BW1 and BW4.

This compares with the industry estimates in April 2020 of R1.45/kWh for Medupi. Considering the on-going delays incompletion, indications are that these costs may even be significantly higher.

Investment

The document notes that the REIPPPP has attracted significant investment in the development of the REIPPs into the country. The total investment (total project costs⁵), including interest during construction, of projects under construction and projects in the process of closure is R209.6 billion (this includes total debt and equity of R209 billion, as well as early revenue and VAT facility of R0.5 billion).

The REIPPPP has attracted R42 billion in foreign investment and financing in the seven bid windows (BW1 – BW4). This is almost double the inward FDI attracted into South

⁴ IPP Office (2022). RENEWABLE ENERGY INDEPENDENT POWER PRODUCER PROCUREMENT PROGRAMME (REIPPPP) BID WINDOW 6 BIDDERS' CONFERENCE, 7 JULY 2022 [online]. Accessed July 2022. <https://www.ipp-renewables.co.za/PressCentre/GetPressRelease?fileid=16a21004-f9fd-ec11-9578-2c59e59ac9cd&fileName=BW6%20Bidders%20Conference%20Consolidated.pdf>.

⁵ Total project costs means the total capital expenditure to be incurred up to the commercial operations date in the design, construction, development, installation, and or commissioning of the project)

Africa during 2015 (R22.6 billion). The document notes that the share of foreign investment and equity showed an increase in the most recent bid window (2S2), suggesting that the REIPPPP continued to generate investor confidence despite the poor economic conditions in South Africa in recent years.

Comparatively, based on the information presented at the REIPPPP Bid Window 6 Bidders Conference on 7 July 2022 by the IPP Office (IPP Office, 2022), approximately R209.6 billion investment has been attracted for energy infrastructure in all bid windows; and as at March 2022 an actual R1.9 billion contribution was realised for socio-economic development.

South African citizen shareholding

The importance of retaining local shareholding in IPPs is key condition of the procurement requirements. The RFP notes that bidders are required to have South African Equity Participation of 40% in order to be evaluated. South African (local) equity shareholding across BW1-4 equates to 52% (R31.4 billion) of the total equity shareholding (R61.0 billion) was held by South African's across BW1 to BW4, 1S2 and 2S2. This equates to substantially more than the 40% requirement. Foreign equity amounts to R29.6 billion and contributes 49% of total equity.

The REIPPPP also contributes to Broad Based Black Economic Empowerment (BBBEE) and the creation of black industrialists. In this regard, Black South Africans own, on average, 34% of projects that have reached financial close (BW1-BW4), which is 4% higher than the 30% target. This includes black people in local communities that have ownership in the IPP projects that operate in or near their communities and represents the majority share of total South African Entity Participation.

On average, black local communities own 9% of projects that have reached financial close. This is well above the 5% target. In addition, an average of 21% shareholding by black people in engineering, procurement, and construction (EPC) contractors has been attained for projects that have reached financial closure. This is higher than 20% target. The shareholding by black people in operating companies of IPPs has averaged 30% (against the targeted 20%) for the 85 projects in operation (i.e. in BW1-4).

The target for shareholding by black people in top management has been set at 40%, with an average 68% achieved to date. The target has therefore been significantly exceeded.

Community shareholding and community trusts

The regulations require a minimum ownership of 2.5% by local communities in IPP projects as a procurement condition. This is to ensure that a substantial portion of the investments has been structured and secured as local community equity. An individual community's dividends earned will depend on the terms of each transaction corresponding with the relevant equity share. To date all shareholding for local communities have been structured through the establishment of community trusts. For projects in BW1 to BW4, qualifying communities will receive R25.5 billion net income over the life of the projects (20 years). The report notes that the bulk of the money will however only start flowing into the communities from 2028 due to repayment obligations in the preceding years (repayment obligations are mostly to development funding institutions). However, despite the delay this represents a significant injection of capital into mainly rural areas of South Africa. If the net projected income for the first seven bid windows (BW1-BW4) was structured as equal payments overtime, it would represent an annual net income of R1.27 billion per year.

Income to all shareholders only commences with operation of the facility. Revenue generated to date by the 85 operational IPPs amounts to R149.9 billion.

Procurement spend

In addition to the financial investments into the economy and favourable equity structures aimed at supporting BEE, the REIPPPP also targets broader economic and socio-economic investment. This is through procurement spend and local content.

The total projected procurement spend for BW1 to BW4 during the construction phase was R71.1 billion, while the projected operations procurement spend over the 20 years operational life is estimated at 75.2 billion. The combined (construction and operations) procurement value is projected as R146.3 billion of which R92.1 billion has been spent to date. For construction, of the R71.1 billion already spent to date, R71 billion is from the 85 projects which have already been completed. These 85 projects had planned to spend R64.2 billion. The actual procurement construction costs have therefore exceeded the planned costs by 11% for completed projects.

Preferential procurement

The share of procurement that is sourced from Broad Based Black Economic Empowered (BBBEE) suppliers, Qualifying Small Enterprises (QSE), Exempted Micro Enterprises (EME) and women owned vendors are tracked against commitments and targeted percentages. The IA target requirement for BBBEE is 60% of total procurement spend. However, the actual share of procurement spend by IPPs from BBBEE suppliers for construction and operations combined is currently reported as 83%, which is significantly higher than the target of 60%, but also the 71% that had been committed by IPPs. BBBEE, as a share of procurement spend for projects in construction, is also reported as 84% with operations slightly lower at 74%.

The majority of the procurement spend to date has been for construction purposes. Of the R76 billion spent on procurement during construction, R64.3 billion has reportedly been procured from BBBEE suppliers, achieving 84.6% of total procured. Actual BBBEE spend during construction for BW1 and BW2 alone was R25.5 billion, 81% more than the 14.1 billion planned by the IPPs. The R64.3 billion spent on BBBEE during construction is 30% more than the R49.7 billion that had originally been anticipated by all IPPs procured in BW1-4.

Total procurement spend by IPPs from QSE and EMEs has amounted to R28.1 billion (construction and operations) to date, which exceeds commitments by 250% and is 30% of total procurement spend to date (while the required target is 10%). QSE and EME's procurement spend for construction was 31% of construction procurement to date and 26% of operational procurement, exceeding the 10% targets set. QSE and EME share of construction procurement spend totals R23.8 billion, which is 5.4 times the planned spend for construction of R4.4 billion during this procurement phase.

In terms of procurement from women-owned vendors to date, 5% of total construction procurement spend has been from woman-owned vendors (against a targeted 5%), and 6% of operational procurement spend has been realised from woman-owned vendors to date, thereby exceeding the targeted 5%. In terms of construction spend, R 4.1 billion was undertaken by women-owned vendors, which is almost double the R 1.8 billion expected to be spent for the construction of projects that have reached financial close. The REIPPPP has therefore created significant employment opportunities for black South African citizens and local communities beyond planned targets. This highlights the importance of the programme in terms of employment equity and the creation of more equal societies.

Local Content⁶

The report notes that the REIPPP programme represents the country's most comprehensive strategy to date in achieving the transition to a greener economy. Local content minimum thresholds and targets were set higher for each subsequent bid window. The report notes that for a programme of this magnitude, with construction procurement spend alone estimated at R71.1 billion, the result is a substantial stimulus for establishing local manufacturing capacity. The local content strategy has created the required incentives for a number of international technology and component manufacturers to establish local manufacturing facilities.

The documents notes that for the portfolio as a whole, the expectation would reasonably be for local content spend to fall between 25% and 65% of the total project value (considering the range of targets and minimum requirements). Local content commitments by IPPs amount to R66.3 billion or 45% of total project value (R148.2 billion for all bid windows).

Actual local content spend reported for IPPs that have started construction amounts to R63.3 billion against a corresponding project value (as realised to date) of R127.2 billion. This means that 50% of the project value has been locally procured, exceeding the 45% commitment from IPPs and the thresholds for BW1 – BW4 (25-45%).

To date, the R63.3 billion local content spend reported by active IPPs is already 96% of the R66 billion local content expected. This is with 6 projects still in construction, and 85 of the 91 active projects having reached COD (i.e. 93% of the active portfolio complete). For the 85 projects that have reached COD, local content spend has been R 58.72 billion of a committed R58.67 billion, which is 0.1 more than the planned local spend.

Leveraging employment opportunities

To date, a total of 63 291 job years⁷ have been created for South African citizens, of which 48 110 job years were in construction and 15 182 in operations. These job years should rise further past the planned target as more projects enter the construction phase. Employment opportunities across BW1-4 are 143% of the planned number during the construction phase (i.e. 33 707 job years), with 6 projects still in construction and employing people. The number of employment opportunities is therefore likely to continue to grow beyond the original expectations.

By the end of December 2021, 85 projects had successfully completed construction and moved into operation. These projects created 44 172 job years of employment, compared to the anticipated 30 488. This was 45% more than planned.

The report notes that employment thresholds and targets were consistently exceeded across the entire portfolio. The average share of South African citizens of total South Africa based employees for BW1 – BW4 was 91% during construction (against a target of 80%), while it was 96% during operations for BW1 – BW4 (against a target of 80%). The report notes that the construction phase offers a high number of opportunities over shorter durations, while the operations phase requires fewer people, but over an extended operating period.

⁶ Local content is expressed as a % of the total project value and not procurement or total project costs.

⁷ The equivalent of a full-time employment opportunity for one person for one year

To date, 48 110 job years for SA citizens were achieved during construction, which is 43% above the planned 33 707 job years for active projects. These job years are expected to rise further since 6 projects are still in construction.

In terms of benefits for local communities, significantly more people from local communities were employed during construction than was initially planned. For active projects, the expectation for local community participation was 13 284 job years. To date 25 272 job years have been realised (i.e. 90% more than initially planned), with 6 projects still in, or entering, construction. The number of black SA citizens employed during construction also exceeded the planned numbers by 74%.

Black South African citizens, youths and rural or local communities have been the major beneficiaries during the construction phases, as they respectively represent 81%, 44% and 48% of total job opportunities created by IPPs to date. However, woman and disabled people could still be significantly empowered as they represent a mere 10% and 0.4% of total jobs created to date, respectively. Nonetheless, the fact that the REIPPPP has raised employment opportunities for black South African citizens and local communities beyond planned targets, indicates the importance of the programme to employment equity and the drive towards more equal societies.

The share of black citizens employed during construction (81%) and the early stages of operations (85%) has significantly exceeded the 50% target and the 30% minimum threshold. Likewise, the share of skilled black citizens (as a percentage of skilled employees) for both construction (71%) and operations (82%) has also exceeded the 30% target and minimum threshold of 18%. The share of local community members as a share of SA-based employees was 48% and 70% for construction and operations respectively – significantly exceeding the minimum threshold of 12% and the target of 20%.

Socio-economic development (SED) contributions

An important focus of the REIPPPP is to ensure that the build programme secures sustainable value for the country and enables local communities to benefit directly from the investments attracted into the area. In this regard, IPPs are required to contribute a percentage of projected revenues accrued over the 20-year project operational life toward SED initiatives. These contributions accrue over the 20-year project operation life and are used to invest in housing and infrastructure as well as healthcare, education, and skills development.

The minimum compliance threshold for SED contributions is 1% of the revenue with 1.5% the targeted level over the 20-year project operational life. For the current portfolio of projects, the average commitment level is 2%, which is 101% higher than the minimum threshold level. To date (across BW1-4) a total contribution of R22.8 billion has been committed to SED initiatives. Assuming an even, annual revenue spread, the average contribution per year would be R1.1 billion. Of the total commitment, R18.5 billion is specifically allocated for local communities where the IPPs operate. With every new IPP on the grid, revenues and the respective SED contributions will increase.

As a percentage of revenue, SED obligations become effective only when operations commence, and revenue is generated. Of the 91 IPPs that have reached financial close (BW1–BW4), 85 are operational. The SED contributions associated with these 85 projects has amounted to R 1.8 billion to date.

In terms of ED and SED spend, education, social welfare, and health care initiatives have a SED focus. SED spend on education has been almost double the expenditure on enterprise development. This is despite enterprise development being a stand-alone commitment category in terms of the IA. This is, in part, due to the fact that some early childhood development programmes have also been incorporated in educational programmes. IPPs have supported 1 388 education institutions with a total of R437 million in contributions, from 2015 to the end of June 2021. A total of 1 276 bursaries, amounting to R210.8 million, have been awarded by 67 IPPs from 2015 until the end of June 2021. The largest portion of the bursaries were awarded to African and Coloured students (97.4%), with women and girls receiving 56.3% of total bursaries. The Northern Cape province benefitted most from the bursaries awarded, with 57.2%, followed by the Eastern Cape (20.2%) and Western Cape (14.1%). Enterprise development and social welfare are the focus areas that have received the second highest share of the contributions to date.

Enterprise development contributions

The target for IPPs to spend on enterprise development is 0.6% of revenues over the 20- year project operational life. However, for the current portfolio, IPPs have committed an average of 0.63% or 0.03% more than the target. Enterprise development contributions committed for BW1-4, amount to R7.2 billion. Assuming an equal distribution of revenue over the 20-year project operational life, enterprise development contributions would be R358 million per annum. Of the total commitment, R5.6 billion is specifically committed directly within the local communities where the IPPs operate, contributing significantly to local enterprise development.

Of the total commitment, R5.6 billion is specifically committed directly within the local communities where the IPPs operate, contributing significantly to local enterprise development. A total contribution of R504.1 million has already been made to the local communities (i.e. 94% of the total R537.9 million enterprise development contributions made to date).

Contribution to cleaner energy and water savings

As part of the global commitment, South Africa is targeting an emissions trajectory that peaks at 34% below a "business as usual" case in 2020, 42% below in 2025 and from 2035 declines in absolute terms. The REIPPPP contributes constructively to economic stability, energy security and environmental sustainability.

The emission reductions for the programme during the preceding 12 months (June 2019-June 2020) is calculated as 15.1 million tonnes CO₂ (MtonCO₂) based on the 14 835 GWh energy that has been generated and supplied to the grid over this period. This represents 75% of the total projected annual emission reductions (20.5MtonCO₂) achieved with only partial operations. A total of 72.1 Mton CO₂ equivalent reduction has been realised from programme inception to date.

The March 2019 Report also notes that since operation, the IPPs have saved 42.8 million kilolitres of water related to fossil fuel power generation. This saving will have increased with the increase in energy generated by renewable energy since 2019. The REIPPPP therefore contributes significantly towards meeting South Africa's GHG emission targets and, at the same time, supporting energy security, economic stability, and environmental sustainability.

2.4.2 Green Jobs Study

The study notes that South Africa has one of the most carbon-intensive economies in the world, therefore making the greening of the electricity mix a national imperative. Within this context the study notes that the green economy could be an extremely important trigger and lever for enhancing a country's growth potential and redirecting its development trajectory in the 21st century. The attractiveness of wind and solar technologies is not only supported by local conditions, but also by the relatively mature stage of their technological development.

The aim of the Green Jobs study was to provide information on the net direct job creation anticipated to emerge in the formal economy across a wide range of technologies/activities that may be classified as green or contributing to the greening of the economy. The study looked at the employment potential for a number of green sectors, including power generation, over three consecutive timeframes, namely, the short term (2011 – 12), medium term (2013 – 17) and long term (2018 – 25). The analysis attempts to estimate the employment potential associated with: building, construction and installation activities; operations and maintenance services; as well as the possible localisation spin-offs for the manufacturing sector as the domestic production of equipment, parts and components benefits from preferential local procurement.

It is also worth noting that the study only considered direct jobs in the formal economy. Multiplier effects were not taken into account. As a result, the analysis only captures a portion of the potential employment impact of a greening economy. International studies have indicated that there are considerable backward and forward linkages through various value chains of production, as well as of indirect and induced employment effects. The employment figures can therefore be regarded as conservative. The analysis reveals the potential of an unfolding green economy to lead to the creation of approximately 98 000 new direct jobs, on average, in the short term, almost 255 000 in the medium term and around 462 000 employment opportunities in the formal economy in the long term. The number of jobs linked to the power generation was estimated to be ~ 12 500 in the short term, 57 500 in the medium term and 130 000 in the long term. Power generation jobs therefore account for 28% of the employment opportunities created in the long term. However, the report notes that the contribution made by a progressively expanding green energy generation segment increases from 14% of the total in the short term, or just over 13 500 jobs, to more than 28% in the long term (166 400) (Table 2.3). The study also found that energy generation is expected to become an increasingly important contributor to green job creation over time, as projects are constructed or commissioned.

Table 2.3: Net direct employment potential estimated for the four broad types of activity and their respective segments in the long term, and an indication of the roll-out over the three timeframes

Broad green economy category	Segment	Technology/product	Total net direct employment potential in the long-term	Net direct manufacturing employment potential in the long-term	Total net direct employment potential (ST, MT, LT)	Net direct manufacturing employment potential (ST, MT, LT)	
ENERGY GENERATION	Renewable (non-fuel) electricity	Wind power	Onshore wind power	5 156	2 105	VL, L, M	L, M, H
			Offshore wind power				
		Solar power	Concentrated solar power	3 014	608	N, VL, M	N, VL, M
			Photovoltaic power	13 541	8 463	M, H, H	H, VH, VH
		Marine power	Marine power	197	0	N, N, VL	N, N, N
		Hydro power	Large hydro power	272	111	VL, VL, VL	VL, M, VL
	Micro-/small-hydro power		100	0	VL, VL, VL	N, N, N	
	Fuel-based renewable electricity	Waste-to-energy	Landfills	1 178	180	VL, VL, L	VL, VL, L
			Biomass combustion	37 270	154	VL, H, VH	VL, VL, L
			Anaerobic digestion	1 429	591	VL, VL, L	VL, L, M
			Pyrolysis/Gasification	4 348	2 663	VL, L, M	VL, H, H
			Co-generation	10 789	1 050	L, M, H	M, H, H
	Liquid fuel	Bio-fuels	Bio-ethanol	52 729	6 641	M, H, VH	L, H, VH
			Bio-diesel				
ENERGY GENERATION SUB-TOTAL			130 023	22 566			
ENERGY & RESOURCE EFFICIENCY	Green buildings	Insulation, lighting, windows	7 340	838	L, M, M	L, M, M	
		Solar water heaters	17 621	1 225	L, H, H	L, M, H	
		Rain water harvesting	1 275	181	VL, VL, L	VL, VL, L	
	Transportation	Bus Rapid Transport	41 641	350	VH, VH, VH	H, M, L	
		Industrial	Energy efficient motors	-566	4	VL, VL, VL	VL, VL, VL
	Mechanical insulation		666	89	VL, VL, VL	VL, VL, VL	
ENERGY & RESOURCE EFFICIENCY SUB-TOTAL			67 977	2 686			
EMMISSIONS AND POLLUTION MITIGATION	Pollution control	Air pollution control	900	166	N, VL, VL	N, L, L	
		Electrical vehicles	11 428	10 642	VL, L, H	N, H, VH	
		Clean stoves	2 783	973	VL, VL, L	VL, L, M	
		Acid mine water treatment	361	0	VL, VL, VL	N, N, N	
	Carbon Capture and Storage		251	0	N, VL, VL	N, N, N	
	Recycling		15 918	9 016	M, H, H	H, VH, VH	
EMMISSIONS AND POLLUTION MITIGATION SUB-TOTAL			31 641	20 797			
NATURAL RESOURCE MANAGEMENT	Biodiversity conservation & eco-system restoration		121 553	0	H, VH, VH	N, N, N	
	Soil & land management		111 373	0	VH, VH, VH	N, N, N	
NATURAL RESOURCE MANAGEMENT SUB-TOTAL			232 926	0			
TOTAL			462 567	46 049			

(Source: Green Jobs Study, 2011)

Notes:

- VH = very high (total employment potential > 20 000 direct jobs; manufacturing employment potential > 3 000 direct jobs);
- H = high (total employment potential > 8 000 but < 20 000; manufacturing employment potential > 1 000 but < 3 000);
- M = medium (total employment potential > 3 000 but < 8 000; manufacturing employment potential > 500 but < 1 000);
- L = low (total employment potential > 1 000 but < 3 000; manufacturing employment potential > 150 but < 500);
- VL = very low (total employment potential > 0 but < 1 000; manufacturing employment potential > 0 but < 150);

- N = negligible/none (total employment potential = 0; manufacturing employment potential = 0).

Of relevance the study also notes that the largest gains are likely to be associated with operations and maintenance (O&M) activities, particularly those involved in the various natural resource management initiatives. In this regard, operations and maintenance employment linked to renewable energy generation plants will also be substantial in the longer term. The employment growth momentum related to building, construction and installation activities peaks in the medium term, largely propelled by mass transportation infrastructure, stabilising thereafter as green building methods become progressively entrenched.

In addition, as projects related to a greening economy are progressively commissioned, the potential for local manufacturing also become increasingly viable. Employment gains in manufacturing are also expected to be relatively more stable than construction activities, since the sector should continue exhibiting growth potential as new and replacement components are produced, as additional markets are penetrated and as new green technologies are introduced. Manufacturing segments with high employment potential in the long term would include suppliers of components for wind and solar farms. The study does note that a shortage of skills in certain professional fields pertinent to renewable energy generation presents a challenge that must be overcome.

The study also identifies a number of advantages associated with renewable energy with a large 'technical' generation potential. In this regard, renewable energy, such as solar and wind, does not emit carbon dioxide (CO₂) in generating electricity and is associated with exceptionally low lifecycle emissions. The construction period for renewable energy projects are much shorter than those of conventional power stations, while an income stream may, in certain instances, be provided to local communities through employment and land rental. The study also notes that the greenhouse gases (GHG) associated with the construction phase are offset within a short period of time compared with the project's lifespan. Renewable power therefore provides an ideal means for reaching emission reduction targets in a relatively easy manner. In addition, and of specific relevance to South Africa, renewable energy source is not dependent on water (as compared to the massive water requirements of conventional power stations), has a limited footprint and therefore does not impact on large tracts of land, poses limited pollution and health risks, specifically when compared to coal and nuclear energy plants.

Of relevance, the study also notes that renewable energy projects in rural areas create an opportunity to benefit the local and regional economy through the creation of jobs and tax revenues.

2.4.3 Powering the Future: Renewable Energy Roll-out in South Africa

The study notes that South Africa has higher CO₂ emissions per GDPppp (2002 figures) from energy and cement production than China or the USA (Letete, T et al). Energy accounts for 83% of the total GHG emissions (excluding land use, land use change and forestry) with fuel combustion in the energy industry accounting for 65% of the energy emissions of South Africa (DEA, 2011).

Within a broader context of climate change, coal energy does not only have environmental impacts, it also has socio-economic impacts. Acid mine drainage from abandoned mines in South Africa impacts on water quality and poses the biggest threat to the country's limited water resources. Huge volumes of water are also

required to wash coal and cool operating power stations. Eskom uses an estimated 10 000 litres of water per second due to its dependency on coal (Greenpeace, 2012).

The report notes that the concerns relating to whether South Africa can afford renewable energy arise out of the perception that renewable energy (RE) is expensive while fossil and nuclear technologies are cheap. The premise also ignores life cycle costing of the technologies which is favourable to renewable technologies where the sources of fuel are free or cheap.

2.4.4 WWF SA Renewable Energy Vision 2030

In its vision the WWF motivated for a more ambitious plan, suggesting that the IRP should provide for an 11-19% share of electricity capacity by 2030, depending on the country's growth rate over the next fifteen years. The vision is to increase renewable energy at the expense of new coal-fired and nuclear capacity. The report notes that in addition to the obvious environmental benefits of this scenario, it will enable South Africa to add flexibility to energy supply capacity on an on-demand basis.

The report notes that Renewable Energy Independent Power Producer Procurement Programme (REIPPPP) introduced in 2011, has by all accounts been highly successful in quickly and efficiently delivering clean energy to the grid. Increasingly competitive bidding rounds have led to substantial price reductions. In this regard, the study indicates that in three years, wind and solar PV have reached pricing parity with supply from new coal-fired power stations from a levelised cost of electricity (LCOE) perspective.

In bidding window 3 of August 2013, the average tariffs bid for wind and solar PV were R0,66/kWh and R0.88/kWh respectively, well below the recent estimates of R1.05/kWh for supply from the coal-fired Medupi and Kusile power stations (Papapetrou 2014).

The report also notes that the REIPPPP has several contracting rounds for new renewables supply. A robust procurement process, extension of a 20-year sovereign guarantee on the power purchase agreement (PPA) and, especially, ideal solar power conditions, have driven the investment case for RE in South Africa. In this regard, South Africa has been identified as one of the worlds' leading clean energy investment destinations (Figure 2.4).

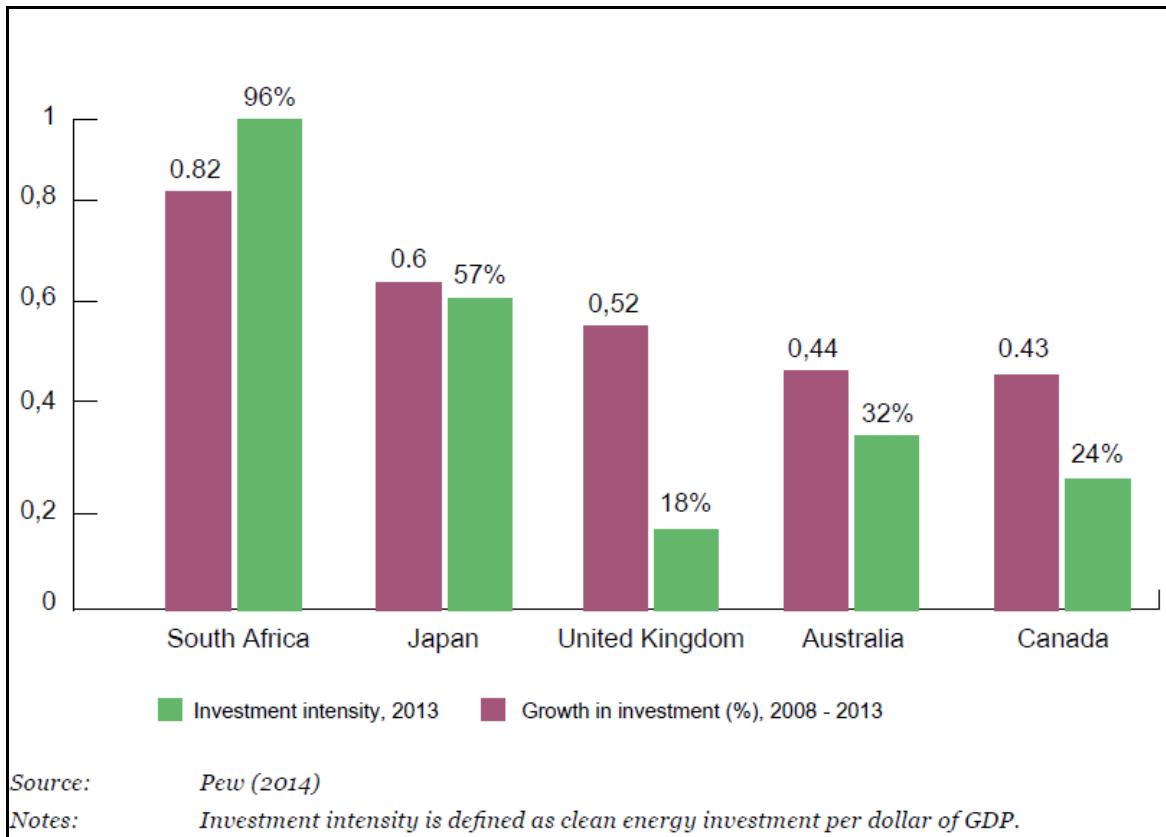


Figure 2.4: South Africa leads as a clean energy investment destination

With regard to local economic development, the REIPPPP sets out various local economic development requirements with stipulated minimum threshold and aspirational targeted levels, which each bidder must comply with. Based on the Broad-Based Black Economic Empowerment Codes, this requirement comprises the following components which make up a scorecard:

- Ownership by black people and local communities.
- Job creation.
- Local content.
- Management control.
- Preferential procurement.
- Enterprise development.
- Socio-economic development.

The final award is based on a combined evaluation in which price determines 70% of the ranking and performance on the local economic development scorecard the remaining 30%. This gives non-price criteria a much heavier weighting than they would normally enjoy under Government’s preferential procurement policy.

Job creation, local content and preferential procurement accounted for the bulk of possible points on the scorecard in REIPPPP Round 3. Consequently, a requirement to source goods and services locally is considered to be the central driver of project costs associated with local economic development. In terms of local content, the definition of local content is quite broad, being the value of sales less the costs associated with imports. However, through successive bidding rounds, the definition has become subject to more detailed definition, with an expanding list of exclusions and increased

targeting in terms of key components identified by the Department of Trade and Industry for local manufacturing. This has benefitted local manufacturers and suppliers.

The WWF study considers a low and high growth renewable energy scenario. The capital requirements for the low growth scenario are estimated at R474 billion over the period 2014-2030 (2014 Rand value), rising to R1.084 trillion in the high-growth scenario, in which 35 GW of capacity is built. Each annual round of purchasing 2 200 MW of RE capacity would cost approximately R77 billion in 2014 Rand value terms. In relative economic terms, this equates to 2% of the GDP per annum or approximately one quarter of Government's planned annual investment in infrastructure over the medium term. In the low economic growth scenario, which is arguably the more realistic one, the average annual new liability over the period is approximately R40 billion.

The study also points out that infrastructure spend is more beneficial than other government expenditure due to the infrastructure multiplier effect. This refers to the beneficial impact of infrastructure on economic growth in both the short term, resulting from expansion in aggregate demand, as well as in the longer term (six to eight years) due to enhanced productive capacity in the economy. A recent USA study on highway expenditure revealed the infrastructure multiplier to be a factor of two on average, and greater during economic downturns (Leduc & Wilson 2013). This means that one dollar spent on infrastructure raises GDP by two dollars. If the same were to hold true, as similar analysis suggests it would (Kumo 2012, Ngandu et al 2010), this indicates that the construction of renewable energy plants could be a valuable economic growth driver at a time when fears of recession abound.

The report concludes that the WWF is optimistic that South Africa can achieve a much more promising clean energy future than current plans allow for. With an excellent solar resource and several good wind-producing pockets, the country is an ideal candidate for a renewable energy revolution.

The report indicates that the levelised cost of producing renewable energy already competes favourably with the three main alternatives, namely coal, gas and nuclear. In addition, renewable energy would contribute to a more climate-resilient future and insulate South Africa from dependence on expensive and unreliable fuel sources priced in dollars. Critical from a planning perspective, the report notes that renewable energy can also provide added flexibility on an 'as needed' basis, as electricity demand grows. This is vital in a highly uncertain environment.

2.4.5 The impact of the green economy on jobs in South Africa

The paper notes that greening the economy is particularly important in South Africa for two basic reasons: (1) the exceptional level of unemployment that the country is experiencing and (2) the high carbon impact of the economy.

In terms of employment, the paper refers to the IDC *Green Jobs Report* (2011). In summary, the short-term (next 2 years) estimate of total net employment potential is 98 000 jobs, and the long-term (next 8 years) employment potential is 462 567 jobs. Natural resource management is predicted to lead to the greatest number of these at 232 926 long-term jobs. Green energy generation is estimated to produce 130 023 long-term jobs, with energy and resource efficiency measures adding another 67 977 long-term jobs.

The paper notes that the Green Jobs Report was prepared by seventeen primary researchers from three prominent organisations, namely the IDC, the Development Bank of South Africa, and Trade and Industrial Policy Strategies. Many role players from other organisations were also consulted, including the World Wide Fund for Nature, the Green Building Council, the Economic Development Department and private companies involved in green industries.

Despite questions surrounding the employment estimates contained in the Green Jobs Report, green economic activity does appear to generate more local jobs than fossil-fuel-based industries. Some of the estimates also indicate the potential for significant employment. The paper concludes that the figures represent a promising starting point that warrants further research and policy involvement in greening the economy in South Africa.

2.4.6 The potential for local community benefits

In her thesis, Tait⁸ notes that the distributed nature of renewable energy generation can induce a more geographically dispersed pattern of development. As a result, RE sites can be highly suited to rural locations with otherwise poor potential to attract local inward investment therefore enabling to target particularly vulnerable areas.

In her conclusion, Tait notes that the thesis has found positive evidence for the establishment of community benefit schemes in the wind sector in South Africa. These benefits would also apply to solar projects. The BBBEE requirements for developers as set out in the DoE's IPPPP for renewables is the primary driver for such schemes. The procurement programme, in keeping with the objective of maximising the economic development potential from this new sector, includes a specific focus on local communities in which wind farms are located.

The procurement programme, typical of all Government tendering processes, includes a BBBEE scorecard on which renewable energy projects are evaluated. However, the renewables scorecard appears to play an important part in a renewed focus on the broad-based Aspects of the legislation, as enforced by a recent national review of the BBBEE Act. In this regard, the renewables scorecard includes specifications for local communities in respect of broad-based ownership schemes, socio-economic development and enterprise development contributions. This approach to legislating social responsibilities of business in all sectors definitely has a South African flavour, borne out of the political history of the country and the imperatives for social transformation laid out in the constitution.

While Tait notes that it is still early days for the development of this sector and one cannot determine the impact that such benefit schemes may have, it is clear though that targeted development expenditure will be directed to multiple rural communities and there seems to be a strong potential to deliver socio-economic benefits.

⁸ The potential for local community benefits from wind farms in South Africa, Louise Tait (2012), Master's Thesis, Energy Research Centre University of Cape Town. Similar benefits are also likely to be associated with solar energy projects.

SECTION 3: OVERVIEW OF STUDY AREA

3.1 INTRODUCTION

Section 3 provides a baseline description of the study area with regard to:

- The administrative context.
- Provincial context.
- Overview of district and local municipalities.
- Site and the surrounding land uses.

3.2 ADMINISTRATIVE CONTEXT

The study area is located within the Emthanjeni Local Municipality (ELM), which falls within the Pixley ka Seme District Municipality (PKSDM) in the Northern Cape Province (Figure 3.1). The PKSDM is made up of eight category B local municipalities which include Emthanjeni, Kareeberg, Thembelihle, Siyathemba, Renosterberg, Ubuntu, Siyancuma and Umsobomvu municipalities. De Aar is the administrative seat of the EML and PKSDM. The site is located within Ward 6 in the ELM.

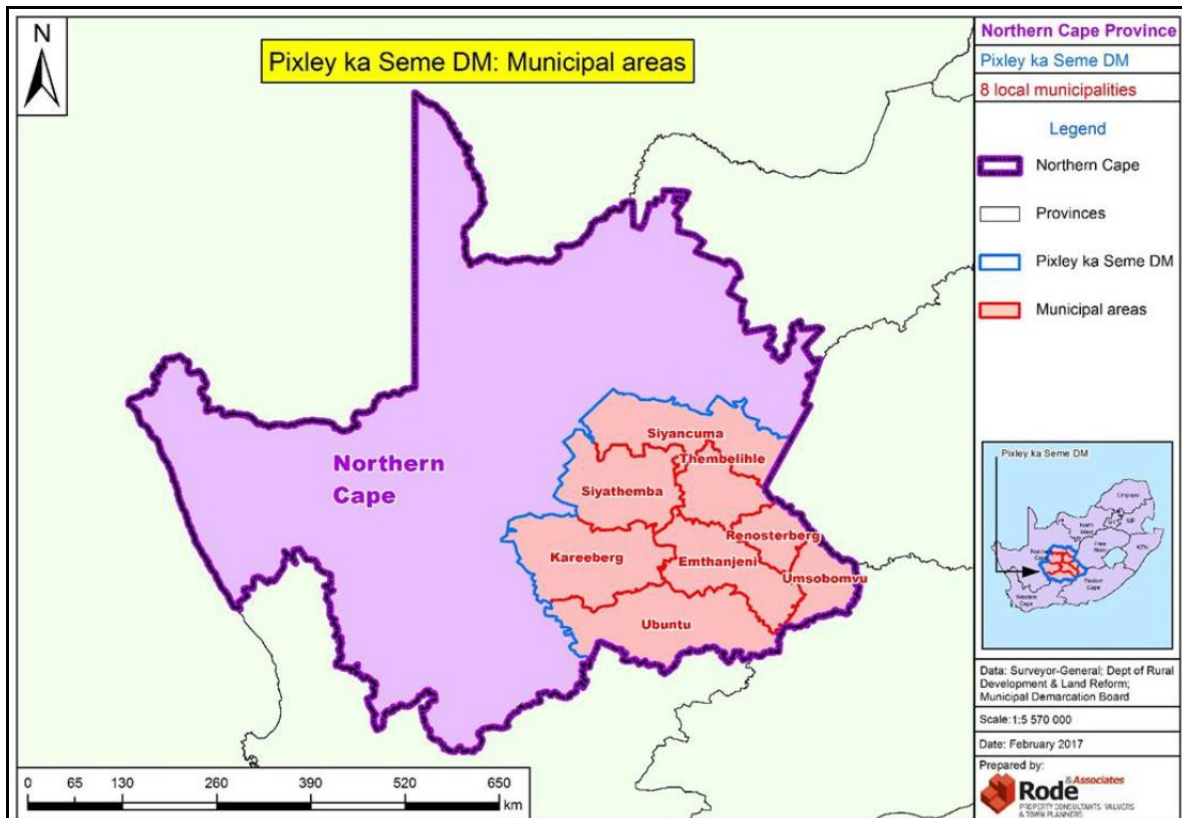


Figure 3.1: Location of the Pixley Ka Seme District Municipality and Emthanjeni Local Municipality and within the Northern Cape Province

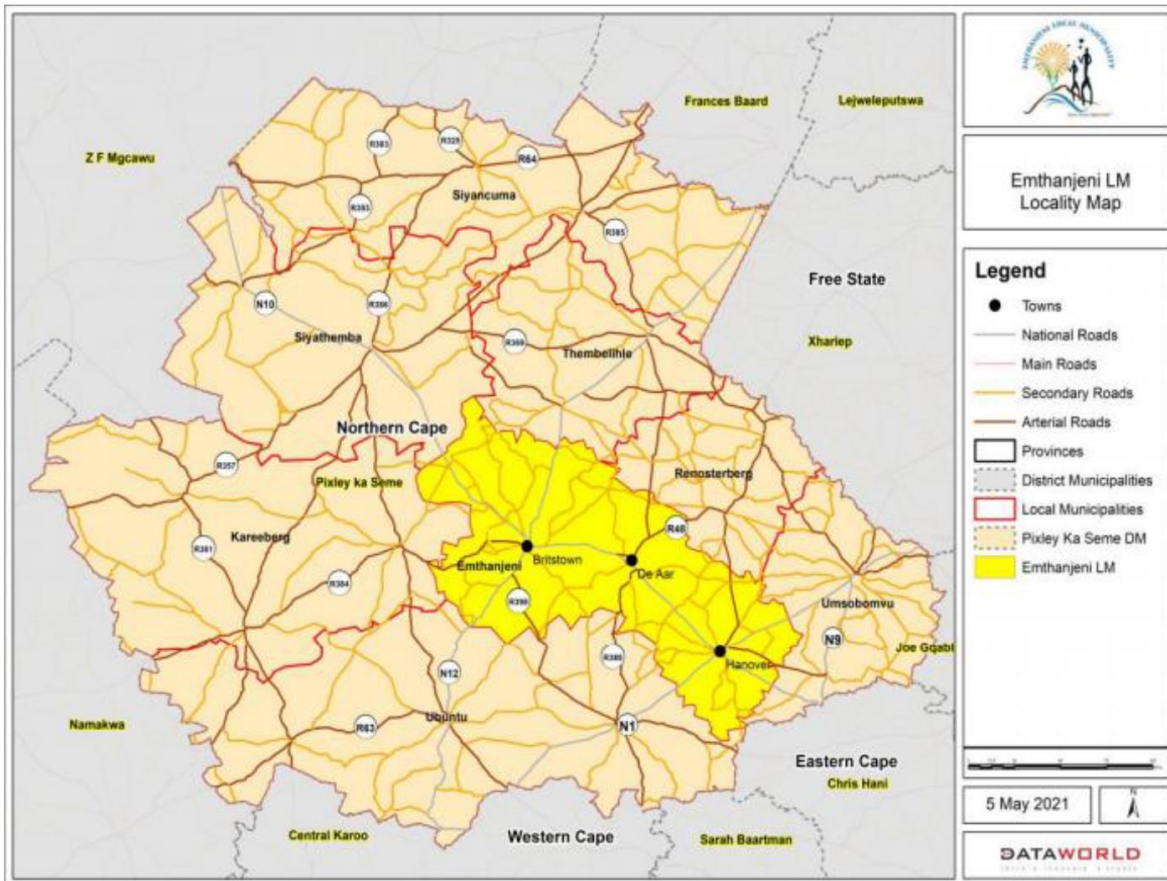


Figure 3.2: Location of Emthanjeni Local Municipality within the Pixley Ka Seme District Municipality

3.3 PROVINCIAL CONTEXT⁹

The proposed site located in the Northern Cape Province, which is the largest province in South Africa and covers an area of 361 830 km² and, constitutes approximately 30% of South Africa. The province is divided into five district municipalities (DM), namely, Frances Baard, Karoo, Namakwa, Pixley Ka Seme and ZF Mgcawu District Municipality (known before 1 July 2013 as Siyanda DM). The site itself is located in the Pixley Ka Seme DM.

Population

Despite having the largest surface area, the Northern Cape has the smallest population of 1 193 780 (Community Household Survey, 2016) or 2.2% of the population of South Africa. Of the five districts, Frances Baard has the largest population (32.5%), followed by ZF Mgcawu District Municipality (21.2%), John Taola Gaetsewe (20.3%), Pixley ka Seme (16.4%) and Namakwa (9.7%). The majority of the population in the Northern Cape Province are Black African (48.1%), followed by Coloureds (43.7%) and Whites (7.7%).

⁹ The information in this section is based on the Northern Cape Provincial Growth and Development Strategy 2004-2014. This document does not include 2011 Census Data. Where possible data from the 2011 Census and 2016 Community Household Survey has been used to update the information.

In terms of age, 36.5% of the Northern Cape population is between 15 and 34 years old, which is the highest age distribution, followed by 29.2% of those aged 35–64 years, while only 6.6% comprised those aged 65 years and older. Similarly, this pattern is also seen across all districts in the province. The district profile shows that the highest proportions of persons aged 15–34 years were recorded in Pixley Ka Seme, ZF Mgcawu and John Taolo Gaetsewe districts. The figures for these three districts were also above the provincial average of 36.5%. The proportion of persons aged 65 years and older was higher in Namakwa (9.5%) and Frances Baard (8.2%).

Education

Based on the information contained in the NCPSTF the average adult education attainment levels in the Northern Cape are lower than the adult education attainment levels of South Africa as a whole. Approximately 19.7% of the Northern Cape adults have no schooling in comparison to South Africa's 18.1%. The Northern Cape has the second lowest percentage of adult individuals (5.5%) that obtained a tertiary education in South Africa. The LED Strategy for the Northern Cape indicates that Pixley ka Seme has the lowest adult education attainment levels in the Northern Cape with 27.3% of the adult population having no form of schooling, whilst John Taolo Gaetsewe is second with 25.4% having no schooling. The highest number of the adult population with tertiary education (6.4%) is located in Frances Baard.

The Northern Cape also has the smallest portion (11.1%) of highly skilled formal employees in South Africa, while Gauteng has the highest (14.3%). Linked to this the Northern Cape has the second largest portion of semi and unskilled formal employees in the country. A lack of skilled people often results in both the public and the private sector being unable to implement planned growth strategies and achieve the desired productivity, service delivery and service quality (NCSDF, 2012).

Economic development

Over the past 8 years there has been little to no variance in the Human Development Index (HDI) figures for the Northern Cape, indicating no increase or decrease in the overall standard of living¹⁰. This trend is unlikely to change in the foreseeable future, mainly due to the marginal economic base of the poorer areas, and the consolidation of the economic base in the relatively better-off areas. It is important to note that the HDI for the Northern Cape (0.55) is substantially below the South African figure of 0.72. The HDI of 0.55 displays a pattern of semi-development, and there is a definite inequality between the different population groups, with the Whites having a higher development lifestyle than the African or Coloured groups.

The percentage of Northern Cape people living below the poverty line has decreased from 40% in 1995 to 27% in 2011, while the poverty gap has decreased from 11% in 1995 to 8% in 2011 (Figure 3.3). The goal set by the province is to decrease the percentage of people living below the poverty line to 20% by 2015 (NCSDF, 2012).

¹⁰ The Human Development Index (HDI) was developed by the United Nations Development Programme (UNDP) based on the philosophy that the goal of development was to ensure that individuals live long, informed and comfortable lives. The HDI consists of three components: Longevity, which is measured by life expectancy at birth; Educational attainment, which is measured by two education variables, namely adult literacy and combined gross primary, secondary and tertiary enrolment ratio, and; Income, which is measured by gross domestic product (GDP) per capita. Performance in each dimension is expressed as a value between 0 and 1, and the HDI index gives an internationally accepted measure of the wellness (quality of life) of the population of the area under consideration. The closer the HDI is to 1.0, the higher the level of "living condition". For example, Sweden has an index of 0.91 defined as high, South Africa at 0.72 is defined as middle and Lesotho at 0.47 is defined as low.

The alleviation of poverty is one of the key challenges for economic development. Higher levels of economic growth are a key challenge for poverty eradication. Investment in people is pivotal to the eradication of poverty and inequality. Investment in people is also, to a large extent, about delivering social and economic infrastructure for education, welfare, health, housing, as well as transport and bulk infrastructure.

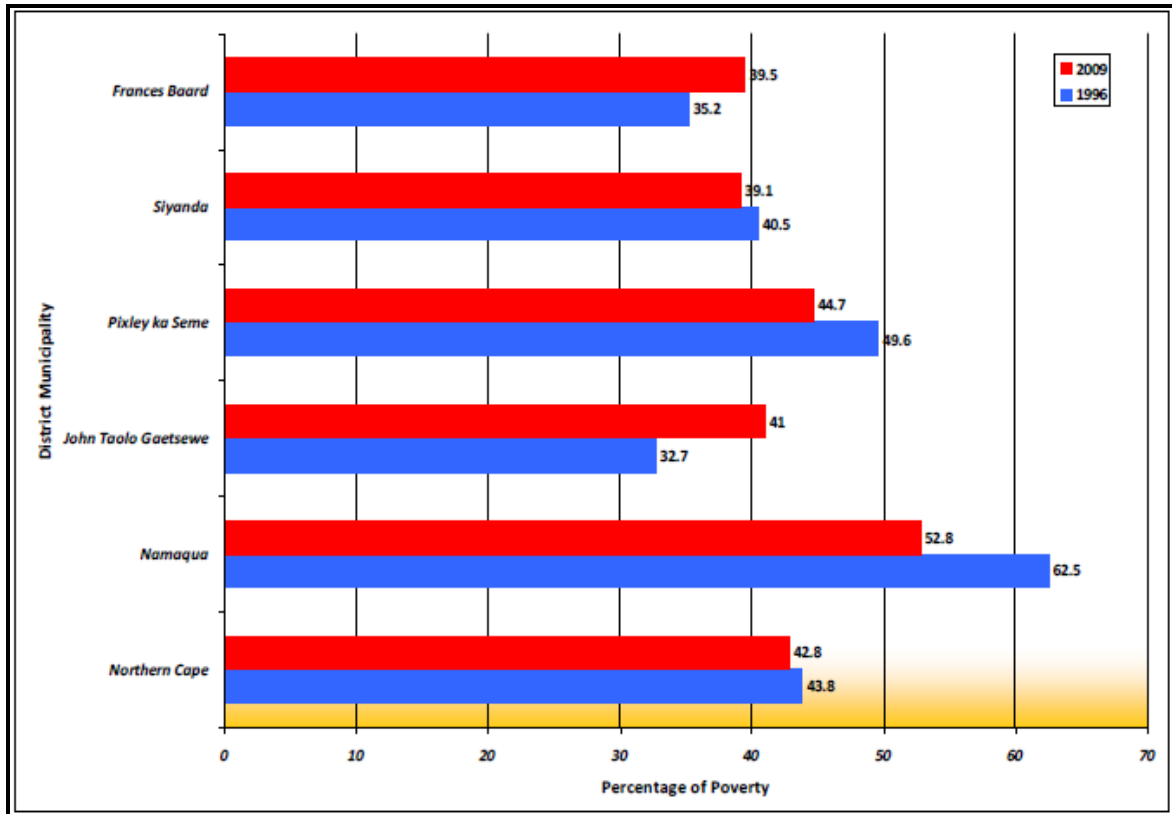


Figure 3.3: Percentage of people living in poverty in the Northern Cape (Source: Global Insight, 2009 as cited in the PGDS, July 2011)¹¹.

In terms of per capita income, the Northern Cape Province has the third highest per capita income of all nine provinces, however, income distribution is extremely skewed, with a high percentage of the population living in extreme poverty. The measure used in the PGDS document to measure poverty is the percentage of people living below the poverty line or breadline is used¹².

Economic sectors

The Northern Cape economy has shown significant recovery since 2000/2001 when it had a negative economic growth rate of -1.5% (LED Strategy). The provincial economy reached a peak of 3.7% in 2003/2004 and remained the lowest of all provinces. The Northern Cape is the smallest contributing province to South Africa's economy (only 2% to South Africa GDP per region in 2007).

¹¹ Siyanda DM is now called the ZF Mgcawu DM.

¹² In terms of the poverty line, a person is considered poor if his or her consumption or income level falls below some minimum level necessary to meet basic needs. The minimum level is usually called the poverty line. In South Africa the poverty income level is set at R800/month for an individual or R 3 200 per month for a household of four.

The mining sector is the largest contributor to the provincial GDP, contributing 28.9% to the GDP in 2002 and 27.6% in 2008. The mining sector is also important at a national level. In this regard, the Northern Cape produces approximately 37% of South Africa's diamond output, 44% of its zinc, 70% of its silver, 84% of its iron-ore, 93% of its lead and 99% if its manganese.

Agriculture and agri-processing sector are also key economic sectors. Approximately 2% of the province is used for crop farming, mainly under irrigation in the Orange River Valley and Vaalharts Irrigation Scheme. Approximately 96% of the land is used for stock farming, including beef cattle and sheep or goats, as well as game farming. The agricultural sector contributed 5.8% to the Northern Cape GDP per region in 2007 which was approximately R1.3 billion, and it employs approximately 19.5% of the total formally employed individuals (NCSD, 2012). The sector is experiencing significant growth in value-added activities, including game-farming. Food production and processing for the local and export market is also growing significantly.

The main agricultural produce of the Northern Cape include:

- High-value horticultural products such as table grapes, sultanas and wine grapes, dates, nuts, cotton, fodder, and cereal crops are grown along the Orange River.
- Wheat, fruit, groundnuts, maize and cotton in the Vaalharts irrigation scheme in the vicinity of Hartswater and Jan Kempdorp.
- Vegetables and cereal crops at the confluence of the Vaal River and the Orange Rivers in the vicinity of Douglas.
- Wool, mohair, karakul, Karoo lamb, ostrich meat and leather, and venison throughout most of the province.

Economic development in the Northern Cape is hampered by the vastness of the area and the remoteness of its communities in rural areas. Development is also hampered by the low education and skills levels in the province. As a result, unemployment in the Northern Cape presents a major challenge.

Employment

According to Statistics South Africa Labour (2012) the community and social services sector is the largest employer in the province at 29%, followed by the agricultural sector (16%), wholesale and retail trade (14%), finance (8%) manufacturing (6%) and mining (6%), etc. (Figure 3.4).

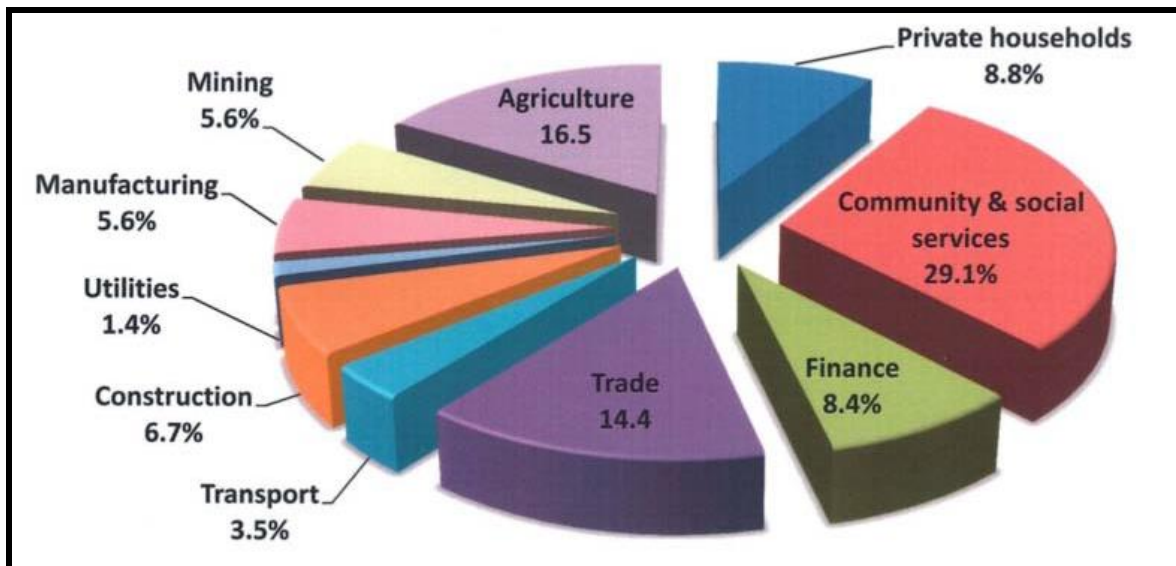


Figure 3.4: Employment by Economic Sector and Industry (Source: Statistics South Africa 2012).

3.4 MUNICIPAL OVERVIEW

Population

The population of the ELM in 2016 was 45 404. Of this total, 36.4% were under the age of 18, 57.9% were between 18 and 64, and the remaining 5.8% were 65 and older. The ELM therefore has a relatively large young population. This creates challenges in terms of creating employment opportunities. In terms of race groups, Coloureds made up 60.9% of the population, followed by Black Africans (32%) and Whites (6.9%). The main first language spoken in the ELM was Afrikaans (69.6%), followed by IsiXhosa (26.5%) and English (0.9%).

The population of Ward 6 in 2011 was 5 784. Of this total, 36.3% were under the age of 18, 58% were between 18 and 64, and the remaining 5.7% were 65 and older. Like the ELM, Ward 6 also had a relatively large young population. In terms of race groups, Coloureds made up 46.4% of the population, followed by Black Africans (45.2%) and Whites (7.3%). The main first language spoken in the Ward 6 was Afrikaans (56.2%), followed by IsiXhosa (32.3%) and English (2.1%).

The high percentage of young people in both the ELM and Ward 6 means that a large percentage of the population is dependent on a smaller productive sector. The dependency ratio is the ratio of non-economically active dependents (usually people younger than 15 or older than 64) to the working age population group (15-64). The higher the dependency ratio the larger the percentage of the population dependent on the economically active age group. This in turn translates reduced revenue for local authorities to meet the growing demand for services. The national dependency ratio in 2011 was 52.7%, similar to that of the Northern Cape Province (55.7%). The dependency ratio for the ELM (2011) was 60.4%. The traditional approach is based people younger than 15 or older than 64. The 2016 information provides information for the age group under 18. The total number of people falling within this age group will therefore be higher than the 0-15 age group. However, most people between the age of 15 and 17 are not economically active (i.e., they are likely to be at school).

Using information on people under the age of 18 is therefore likely to represent a more accurate reflection of the dependency ratio. Based on these figures, the dependency ratio for the ELM in 2016 and Ward 6 (2011) was 72.8% and 72.4% respectively. This figure is significantly higher than the national and provincial levels in 2011 (52.7% and 55.7% respectively). The higher dependency ratio reflects the limited employment opportunities in the area and represent a significant risk to the district and local municipality. The high dependency ratio also highlights the importance to maximising local employment opportunities and the key role played by training and skills development programmes.

Households and house types

Based on the information from the 2016 Community Survey there were a total of 11 992 households in the ELM and 1 687 in Ward 6. Most of the households reside in formal houses (74.2% ELM and 88.1% Ward 6). The figure for the ELM is similar to the District (78.1%) and Provincial (74.4%) figures. Approximately 17% of the households in the ELM reside in backyard flats and a further 4.2% in informal shacks. For Ward 6 only 1.2% lived in shacks.

Based on the information from the 2016 Community Household Survey 39.8% of the households in the ELM are headed by females compared to 31.1% for Ward 6 (2011). The figure for ELM was similar to the District and Provincial figures of 37% and 39% respectively. The high number of female-headed households at the local municipal and ward level reflects the lack on formal employment and economic opportunities in the ELM. As a result, job seekers from the ELM need to leave the areas to seek work in the larger centres. As indicated above, this highlights the importance to maximising local employment opportunities and the key role played by training and skills development programmes.

The majority of the job seekers are likely to be males. This is due to traditional rural patriarchal societies where the role of the women is usually linked to maintaining the house and raising the children, while the men tend to be the ones that migrate to other areas in search of employment.

Household income

Based on the data from the 2011 Census, 9.1% of the population of the ELM had no formal income, 3.3% earned less than R 4 800, 4.9% earned between R 5 000 and R 10 000 per annum, 18.2% between R 10 000 and R 20 000 per annum and 22.4% between R 20 000 and 40 000 per annum (2011). The figures for Ward 6 were 7.7%, 3.3%, 5.2%, 21% and 22.6%. The poverty gap indicator produced by the World Bank Development Research Group measures poverty using information from household per capita income/consumption. This indicator illustrates the average shortfall of the total population from the poverty line. This measurement is used to reflect the intensity of poverty, which is based on living on less than R3 200 per month for an average sized household (~ 40 000 per annum). Based on this measure, in the region of 57.9% of the households in the ELM and 59.8% in Ward 6 live close to or below the poverty line. While this figure is lower than the provincial level of 62.9%, the low-income levels reflect the limited employment opportunities in the area and dependence on the agricultural sector. This is also reflected in the high unemployment rates. As indicated above, this highlights the importance to maximising local employment opportunities and the key role played by training and skills development programmes.

The low-income levels are a major concern given that an increasing number of individuals and households are likely to be dependent on social grants. The low-income levels also result in reduced spending in the local economy and less tax and rates

revenue for the ELM. This in turn impacts on the ability of the ELM to maintain and provide services.

The Integrated Development Plan (IDP) for the ELM indicates that the total number of indigent households within the municipal area increased from 2 726 households as of 30 June 2014 to 2 874 as at April 2017 and about 3 594 households during January 2016/17. The COVID-19 pandemic is likely to have resulted in an increase in the number of indigent households in 2020 and 2021.

Employment

The official unemployment figure in 2011 for the ELM was 14.5%. The figures also indicate that the majority of the population are not economically active, namely 43.7%. These figures are similar to the official unemployment rate for the Northern Cape Province (14.5%) and Pixley ka Seme District (14.8%). This reflects the limited employment opportunities in the area, which in turn are reflected in the low income and high poverty levels. Given the impact of COVID-19 pandemic, the unemployment levels are likely to be higher in 2021. The figures for Ward 6 were 11.7% (unemployed) and 44% of the economically active population being employed.

Education

In terms of education levels, the percentage of the population over 20 years of age in the ELM with no schooling was 17.4% in 2011, compared to 7.9% for the Northern Cape Province and 11.9% for the District. The percentage of the population over the age of 20 with matric was 28.3%, compared to 29.1% for the Province and 25.3% for the District. Only 1.5% and 1.4% of the population over the age of 20 years in the ELM had an undergraduate and postgraduate qualification, respectively. The relatively poor education levels in the ELM pose a potential challenge to the implementation of an effective training and skills development programme for local community members. The figures for Ward 6 (2011) were 16.4% with no schooling, 18.6% with matric and 1.9% and 1.3% with an undergraduate and postgraduate degree respectively.

3.5 MUNICIPAL SERVICES

Access to electricity

Based on the information from the 2016 Community Survey 96.6% of households had access to electricity. Of this total 88.4% had inhouse prepaid meters. No data was available for Ward 6.

Access to water

Based on the information from the 2016 Community Survey 96.7% of households were supplied by a regional or local service provider. However, only 53.2% of the households had piped water inside their houses, while 44.3% relied on piped water inside the yard. The figures for the District were 45.8% and 44.4% respectively. Only 45.3% of households in the Northern Cape Province have piped water inside their homes. For Ward 6 77.5% of households were supplied by the local service provider and 19.2% relied on boreholes, which reflects the rural nature of Ward 6.

Sanitation

Based on the information from the 2016 Community Survey, 95.3% of households have access to flush toilets, 2.1% rely on pit latrines, 1.5% use bucket toilets, while 0.5% had no access to toilet facilities. The figures in terms of access to flush toilets are higher than provincial (71.4%) and District (82.8%) figures. For Ward 6 72.7% of households had access to flush toilets and 7.2% had no access to toilets. 16 % relied on pit latrines.

Refuse collection

Based on the information from the 2016 Community Survey, 79.8% of households have their refuse collected on a regular basis by a local authority or private company, 4.6% use their own dumps, and 8.7% are not serviced. For Ward 6, 59.8% were provided with a regular service while 20% relied on their own dump.

3.6 HEALTH AND COMMUNITY FACILITIES

The PKSDM is served by 3 District Hospitals, 8 Community Health Centres, 28 Primary Health Care Clinics, 4 satellite clinics and 1 mobile clinic, distributed over the district. The ELM has 1 District Hospital and 6 Primary Health Care clinics. There are no community health centres within ELM that provide a 24hour service. A new hospital was built in De Aar and was opened in 2017. The Central Karoo Hospital serves as the referral hospital for the district. Minor operations are performed at the facility. Specialists visit the district on a monthly basis from Kimberley Hospital Complex. In terms of education the ELM has 16 schools of which 13 are no-fee schools. The ELM also has libraries.

3.7 ECONOMIC OVERVIEW

Agriculture

Agriculture is the key economic sector in the PKSDM and ELM. Many of the towns within the district municipal area function mainly as agricultural service centres, with the level of services provided at the centres to a large extent reliable on the intensity of the farming practices in the surrounding area. Despite the largely semi-arid and arid environment in the district, the fertile land that lies alongside the Orange, Vaal and Riet Rivers supports the production of some of the country's finest quality agricultural products, including grapes and vegetables. The main livestock farming in the region include cattle, sheep, and goat farming. Game breeding has also been identified as one of the opportunities which could be linked with the tourism sector for Game reserves and hunting activities. However, despite the key role played by agriculture there is limited value adding to the farming products within the district and the area is prone to droughts and climate change.

Mining

The main deposits in Pixley ka Seme include alluvial diamond mining along the Orange River and various semi-precious stones, such as tiger-eye and zinc deposits. The region also has various salt pans for the potential of salt production. Uranium deposits also occur in the district.

Tourism

The tourism sector in the district contributes 15.6% to the provincial gross value added (GVA). The municipalities Emthanjeni, Kareeberg, Umsobomvu and Siyancuma municipalities are the biggest contributors to the provincial gross value added (GVA). The PKSDM IDP notes that the tourism opportunities in the district will increase due to the Karoo Array Telescope (KAT), a project being driven at a national level. Of relevance, the PKSDM notes that care needs to be taken with developments that have the potential to negatively impact on the Karoo landscapes.

Renewable energy

Of key relevance the PKSDM IDP identifies renewable energy as key economic sector and refers to the substantial socio-economic development (SED) and enterprise development (ED) contributions leveraged by the IPPPP commitments. The IDP notes

that the towns of Prieska and Carnarvon have in recent years changed character from small rural towns to potentially regional hubs as a result of investments in renewable energy generation and the Square Kilometre Array (SKA) radio telescope project, respectively.

3.8 OVERVIEW OF STUDY AREA¹³

The Hercules PV SEF Cluster is located approximately 15 km to the east, south east of De Aar. The northern part of the site is bisected by the railway line to Nouport to the south west which then links up with Port Elizabeth to the south. The N10 which links De Aar to Port Elizabeth bisects the southern section of the site. The majority of the site is therefore located between the Noupport railway line to the north and the N10 to the south. The large, Eskom Hydra substation is located immediately to the north and north west of the site. Other towns in the area are Philipstown, 35km to the north east, Britstown, 58km to the west and Hanover, 47km to the south of the site (Figure 3.5).

De Aar, which means “the artery”, was founded in 1904, and is the second most important railway junction in the country. Rail lines linking Gauteng, Cape Town, Port Elizabeth, and Namibia all pass through the town. The decline of the railway sector over the last 20 years has impacted negatively on the towns economy. De Aar also has the largest abattoir in the Southern Hemisphere and supplies all the major centres throughout the entire country with the famous “Karoo” lamb and mutton. Apart from meat production, the sheep farms around De Aar are also major suppliers of wool. The town is total dependant on boreholes for its water supply. The landscape associated with the site is a typical Karoo landscape consisting of dolerite koppies and ridges separated by valley bottoms. The land uses are linked to livestock farming, specifically sheep farming.

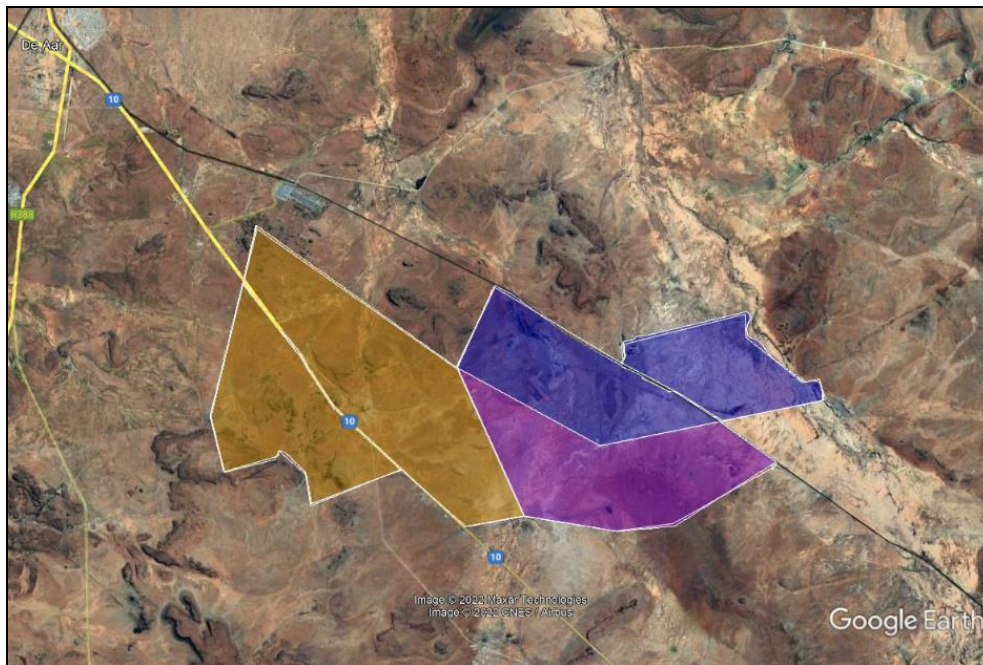


Figure 3.5: Location of Hercules PV SEF cluster

¹³ The overview of the study area will be updated following the site visit during the Assessment Phase

SECTION 4: OVERVIEW OF KEY SOCIAL ISSUES

4.1 INTRODUCTION

Section 4 provides an overview of key social issues identified that will be assessed during the Assessment Phase. The identification of key issues was based on:

- Review of project related information.
- Experience/ familiarity of the author with the area and local conditions.
- Experience with similar projects.

The section is divided into the following sections:

- Compatibility with relevant policy and planning context (“planning fit”);
- Social issues associated with the construction phase.
- Social issues associated with the operational phase.
- Social issues associated with the decommissioning phase.
- Social implications of “no development” alternative.
- Social implications associated with cumulative impacts.

Section 4 also provides an overview of the approach (plan of study) for undertaking the specialist Social Impact Assessment (SIA) during the Assessment Phase.

4.2 ASSESSMENT OF POLICY AND PLANNING FIT

The development of renewable energy is strongly supported at a national, provincial, and local level. The development of and investment in renewable energy is supported by the National Development Plan (NDP), New Growth Path Framework and National Infrastructure Plan, which all refer to and support renewable energy. The PKSDM SDF and IDP and ELM IDP also support the development of renewable energy. The development of the proposed PV SEFs is therefore supported by key policy and planning documents.

4.3 CONSTRUCTION PHASE SOCIAL IMPACTS

Potential positive impacts

- Creation of employment and business opportunities, and opportunity for skills development and on-site training.

Potential negative impacts

- Impacts associated with the presence of construction workers on local communities.
- Impacts related to the potential influx of job-seekers.
- Increased risks to livestock and farming infrastructure associated with the construction related activities and presence of construction workers on the site.
- Increased risk of grass fires associated with construction related activities.
- Nuisance impacts, such as noise, dust, and safety, associated with construction related activities and vehicles.

- Impact on productive farmland.

4.3.1 Creation of local employment, training, and business opportunities

The construction phase of each V SEFs will extend over a period of approximately 18 months and create in the region of 350 employment opportunities. Members from the local communities in the area, specifically De Aar, would be in a position to qualify for most of the low skilled and semi-skilled employment opportunities. Most of these employment opportunities will accrue to Historically Disadvantaged (HD) members of the community. Based on information from similar projects the total wage bill for the construction phase of each PV SEF will be in the region of R 25 million (20221 Rand values). A percentage of the wage bill will be spent in the local economy which will also create opportunities for local businesses in the local towns in the area.

Given relatively high local unemployment levels and limited job opportunities in the area, this will represent a significant, if localised, social benefit. The capital expenditure for each PV SEF will be approximately R 1.5 billion (2022 Rand value). Due the lack of diversification in the local economy the potential for local companies is likely to be limited. The majority of benefits are therefore likely to accrue to contractors and engineering companies based outside the ELM. The local service sector will also benefit from the construction phase. The potential opportunities would be linked to accommodation, catering, cleaning, transport, and security, etc. associated with the construction workers on the site.

The hospitality industry in the area will also benefit from the provision of accommodation and meals for professionals (engineers, quantity surveyors, project managers, product representatives etc.) and other (non-construction) personnel involved on the project. Experience from other construction projects indicates that the potential opportunities are not limited to on-site construction workers but also to consultants and product representatives associated with the project.

Table 4.1: Impact assessment of employment and business creation opportunities during the construction phase

Nature: Creation of employment and business opportunities during the construction phase			
Issue	Nature of Impact	Extent of Impact	No-Go Areas
Creation of employment and business opportunities during the construction phase	<u>Direct impacts:</u> <ul style="list-style-type: none"> » Creation of temporary employment opportunities » Creation of business and procurement opportunities <u>Indirect impacts:</u> <ul style="list-style-type: none"> » Support for local economy. » Creation of training and skills development opportunities 	Local-Regional	N/A
Description of expected significance of impact			
Evidence from the other renewable energy projects indicates that the construction phase of 100 MW SEF will extend over a period of approximately 18-24 months and create in the region of 350 employment opportunities. Members from the local communities in the area, specifically De Aar, would be in a position to qualify for most of the low skilled and semi-skilled opportunities. The business-related opportunities will be linked to the hospitality (accommodation) and services sector (catering, security, transport etc.).			
Gaps in knowledge & recommendations for further study			

- » Collection of information on local skills and education levels.
 - » Collection of information on local hospitality and services sector.
- Recommendations with regards to general field surveys**
- » Site visit and interviews with representatives from local municipality, and the hospitality and services sector.
 - » Site visit and interviews with local chamber of commerce.

4.3.2 Impact of construction workers on local communities

The presence of construction workers poses a potential risk to family structures and social networks. While the presence of construction workers does not in itself constitute a social impact, the manner in which construction workers conduct themselves can impact on local communities. The most significant negative impact is associated with the disruption of existing family structures and social networks. This risk is linked to potentially risky behaviour, mainly of male construction workers, including:

- An increase in alcohol and drug use.
- An increase in crime levels.
- The loss of girlfriends and/or wives to construction workers.
- An increase in teenage and unwanted pregnancies.
- An increase in prostitution.
- An increase in sexually transmitted diseases (STDs), including HIV.

The proponent has indicated that workers will be accommodated on site.

The objective will be to source as many of the low and semi-skilled workers locally. These workers will be from the local community and form part of the local family and social networks. This will reduce the risk and mitigate the potential impacts on the local community. The potential impact on the local community is therefore likely to be low if well managed. The balance of non-local semi-skilled and skilled workers will be accommodated in De Aar.

Table 4.2: Assessment of impact of the presence of construction workers in the area on local communities

Nature: Potential impacts on family structures and social networks associated with the presence of construction workers			
Issue	Nature of Impact	Extent of Impact	No-Go Areas
Potential impacts on family structures and social networks associated with the presence of construction workers	<u>Direct impacts:</u> <ul style="list-style-type: none"> » Disruption of existing family structures and social networks » Anti-social behaviour of construction workers » Increase in substance abuse, crime, sexually transmitted diseases. » Unplanned pregnancies <u>Indirect impacts:</u> <ul style="list-style-type: none"> » Impact on psychological well- 	Local-Regional	N/A

	being of local communities. » Resentment of outsiders and tension within local communities		
Description of expected significance of impact			
Evidence from the other renewable energy projects indicates that presence and behaviour of construction workers can impact negatively on local communities. Members from the local communities in the area, specifically De Aar, would be at potential risk depending on where non-local construction workers are accommodated during the construction phase.			
Gaps in knowledge & recommendations for further study			
» Collection of information on local skills and education levels. Employing local community members reduces the potential risks			
» Collection of information on accommodation options and capacity.			
» Collection of information on existing community challenges and needs.			
Recommendations with regards to general field surveys			
» Site visit and interviews with representatives from local municipality and community representatives.			
» Site visit and interviews with representatives from hospitality sector with regard to accommodation options.			

4.3.3 Influx of job seekers

Large construction projects tend to attract people to the area in the hope that they will secure a job, even if it is a temporary job. These job seekers can in turn become “economically stranded” in the area or decide to stay on irrespective of finding a job or not. While the proposed project on its own does not constitute a large construction project, the establishment of a number of renewable energy projects in the area may attract job seekers to the area. As in the case of construction workers employed on the project, the actual presence of job seekers in the area does not in itself constitute a social impact. However, the way in which they conduct themselves can impact on the local community. The main areas of concern associated with the influx of job seekers include:

- Impacts on existing social networks and community structures.
- Competition for housing, specifically low-cost housing.
- Competition for scarce jobs.
- Increase in incidences of crime.

These issues are similar to the concerns associated with the presence of construction workers and are discussed in Section 4.3.1. The potential for economically motivated in-migration and subsequent labour stranding is likely to be negligible. This is due to the isolated location of the area and the limited economic and employment opportunities in De Aar.

Table 4.3: Assessment of impact of job seekers on local communities

Nature: Potential impacts on family structures, social networks and community services associated with the influx of job seekers			
Issue	Nature of Impact	Extent of Impact	No-Go Areas
Potential impacts on family structures, social networks and community services associated with the influx of job seekers	<p><u>Direct impacts:</u></p> <ul style="list-style-type: none"> » Disruption of existing family structures and social networks » Anti-social behaviour of construction workers » Increase in substance abuse, crime, sexually transmitted diseases. » Unplanned pregnancies » Pressure on local services <p><u>Indirect impacts:</u></p> <ul style="list-style-type: none"> » Impact on psychological well-being of local communities. » Resentment of outsiders and tension within local communities 	Local-Regional	N/A
<p>Description of expected significance of impact Evidence from the other renewable energy projects indicates that the construction phase can result in the influx of jobseekers to the area and that this has the potential to impact negatively on local communities. However, the potential for the influx of jobseekers is also influenced by the location of the project. Projects located in relatively remote, rural areas are less likely to attract jobseekers</p>			
<p>Gaps in knowledge & recommendations for further study</p> <ul style="list-style-type: none"> » Collection of information on existing community challenges and needs. <p>Recommendations with regards to general field surveys</p> <ul style="list-style-type: none"> » Site visit and interviews with representatives from local municipality and community representatives. 			

4.3.4 Risk to safety, livestock, and farm infrastructure

The presence on and movement of construction workers on and off the site poses a potential safety threat to local farmers and farm workers in the vicinity of the site. In addition, farm infrastructure, such as fences and gates, may be damaged and stock losses may also result from gates being left open and/or fences being damaged, or stock theft linked either directly or indirectly to the presence of construction workers on the site. The potential risks (safety, livestock, and farm infrastructure) can be effectively mitigated by careful planning and managing the movement of construction workers on and off the site workers during the construction phase.

Table 4.4: Assessment of risk to safety, livestock, and damage to farm infrastructure

Nature: Potential risk to farmers and farm workers, livestock and damage to farm infrastructure associated with the presence and activities of construction workers on site			
Issue	Nature of Impact	Extent of Impact	No-Go Areas
Potential risk to safety of scholars, farmers and farm workers, livestock and damage to farm infrastructure associated with the presence of construction workers on site	<p><u>Direct impacts:</u></p> <ul style="list-style-type: none"> » Damage of gates, fences, etc. » Injuries to and loss of livestock » Break-ins, and theft of from local farms. » Damage of local farm roads. <p><u>Indirect impacts:</u></p> <ul style="list-style-type: none"> » Exposure to outside people of farming operations and risk to farming operations. » Increased risk of stock-theft. 	Local	N/A
<p>Description of expected significance of impact Evidence from the other renewable energy projects indicates that the movement and activities of construction workers can impact on farming operations. The impacts include damage to fences and gates, gates being left open resulting in loss of livestock, increased risk of petty theft and stock theft etc.</p>			
<p>Gaps in knowledge & recommendations for further study » Collection of information on existing farming operations and activities.</p> <p>Recommendations with regards to general field surveys » Site visit and interviews with local farmers and representatives from local farming associations etc.</p>			

4.3.5 Increased risk of grass fires

The presence of construction workers and construction-related activities on the site poses an increased risk of grass fires that could, in turn pose, a threat to livestock, crops, wildlife and farm infrastructure. The potential risk of grass fires will be higher during the dry, windy winter months from May to October. The impacts will be largely local and can be effectively mitigated.

Table 4.5: Assessment of impact of increased risk of grass fires

Nature: Potential loss of livestock, crops and houses, damage to farm infrastructure and threat to human life associated with increased incidence of grass fires			
Issue	Nature of Impact	Extent of Impact	No-Go Areas
Potential loss of livestock, crops and houses, damage to farm infrastructure and threat to human life associated with increased incidence of grass fires	<u>Direct impacts:</u> <ul style="list-style-type: none"> » Damage of structures, grazing, gates, fences, etc. » Injuries to and loss of livestock <u>Indirect impacts:</u> <ul style="list-style-type: none"> » Impact on stocking levels and future farming operations. » Increased risk of stock losses and theft. 	Local	N/A
Description of expected significance of impact			
Evidence from the other renewable energy projects indicates that the activities associated with the construction phase can increase the risk of grass fires, which in turn can impact on farming operations. The impacts include loss of grazing, damage to structures, fences, and gates, etc. These impacts impact on the livelihood of farmers.			
Gaps in knowledge & recommendations for further study			
<ul style="list-style-type: none"> » Collection of information on existing farming operations and activities, and risk of grass fires in the area. 			
Recommendations with regards to general field surveys			
<ul style="list-style-type: none"> » Site visit and interviews with local farmers and representatives from local farming associations etc. 			

4.3.6 Nuisance impacts associated with construction related activities

Construction related activities, including the movement of heavy construction vehicles of and on the site, has the potential to create dust, noise and safety impacts and damage roads. The impacts will be largely local and can be effectively mitigated.

Table 4.6: Assessment of the impacts associated with construction related activities

Nature: Potential noise, dust and safety impacts associated with construction related activities			
Issue	Nature of Impact	Extent of Impact	No-Go Areas
Potential noise, dust and safety impacts associated with construction related activities	<u>Direct impacts:</u> <ul style="list-style-type: none"> » Dust impacts, and impact on quality of life and also crops and grazing. » Noise impacts, and impact on quality of life. » Safety of farmers due to movement of construction vehicles » Damage of local farm roads. <u>Indirect impacts:</u>	Local	N/A

	» Limited indirect impacts		
Description of expected significance of impact			
Evidence from the other renewable energy projects indicates that the activities associated with the construction phase do result in dust, noise and safety impacts that can impact on local farmers and farm workers.			
Gaps in knowledge & recommendations for further study			
» Collection of information on existing farming operations and activities.			
Recommendations with regards to general field surveys			
» Site visit and interviews with local farmers and representatives from local farming associations etc.			

4.3.7 Impacts associated with loss of farmland

The activities associated with the construction phase and establishment of the proposed project and associated infrastructure will result in the disturbance and loss of land available for grazing. The impact on farmland associated with the construction phase can be mitigated by minimising the footprint of the construction related activities and ensuring that disturbed areas are fully rehabilitated on completion of the construction phase. In addition, the landowner will be compensated for the loss of land.

Table 4.7: Assessment of impact on farmland due to construction related activities

Nature: The activities associated with the construction phase, such as establishment of access roads and the construction camp, movement of heavy vehicles and preparation of foundations for the project etc. will damage farmlands and result in a loss of farmlands for grazing.			
Issue	Nature of Impact	Extent of Impact	No-Go Areas
Damage to farmland and loss of grazing and or crops	<u>Direct impacts:</u> » Loss of grazing and or crops <u>Indirect impacts:</u> » Impact on future farming operations. » Impact on employment opportunities on the farm.	Local	N/A
Description of expected significance of impact			
Evidence from the other renewable energy projects indicates that the activities associated with the construction phase will result in the loss of farmland, including grazing and or crops depending on the location. These impacts impact on the livelihood of farmers. However, loss of land and crops can be addressed by minimising the disturbance footprint and compensation for losses.			
Gaps in knowledge & recommendations for further study			
» Collection of information on existing farming operations and activities.			
Recommendations with regards to general field surveys			
» Site visit and interviews with local farmers and representatives from local farming associations etc.			

4.4 OPERATIONAL PHASE SOCIAL IMPACTS

The following key social issues are of relevance to the operational phase:

Potential positive impacts

- The establishment of infrastructure to improve energy security and support renewable sector.
- Creation of employment opportunities.
- Benefits to the affected landowners.
- Benefits associated with the socio-economic contributions to community development.

Potential negative impacts

- Visual impacts and associated impacts on sense of place.
- Impact on property values.
- Impact on tourism.

4.4.1 Improve energy security and support the renewable energy sector

The primary goal of the proposed project is to improve energy security in South Africa by generating additional energy. The proposed PV SEFs also reduces the carbon footprint associated with energy generation. The project should therefore be viewed within the context of the South Africa's current reliance on coal powered energy to meet the majority of its energy needs, and secondly, within the context of the success of the REIPPPP.

Table 4.8: Improve energy security and support renewable sector

Nature: Development of infrastructure to improve energy security and support renewable sector			
Issue	Nature of Impact	Extent of Impact	No-Go Areas
Improve SAs energy security and reduce reliance on coal	<u>Direct impacts:</u> » Improve energy security » Reduce reliance on coal. » Support renewable energy <u>Indirect impacts:</u> » Address climate change impacts	Local- International	N/A
Description of expected significance of impact			
South Africa's energy crisis, which started in 2007 and is ongoing, has resulted in widespread rolling blackouts (referred to as load shedding) due to supply shortfalls. The load shedding has had a significant impact on all sectors of the economy and on investor confidence. A review of the REIPPPP and establishment of renewable energy facilities not only addresses environmental issues associated with climate change and consumption of scarce water resources, but also create significant socio-economic opportunities and benefits, specifically for historically disadvantaged, rural communities.			
Gaps in knowledge & recommendations for further study			
» Collection and review of information on REIPPPP.			
Recommendations with regards to general field surveys			
» N/A. Desktop review of REIPPPP.			

4.4.2 Creation of employment opportunities

Each PV SEF will create in the region of 20 full time employment opportunities during the operational phase, of which 70% will be unskilled, 25% semi-skilled 25%, and 5% skilled 5%. Most of the unskilled and low skilled workers will be local HDI residents of De Aar. Based on similar projects the annual operating budget will be in the region of R 24 million (2022 Rand values), including wages.

Table 4.9: Assessment of employment and business creation opportunities

Nature: Creation of employment and business opportunities associated with the operational phase			
Issue	Nature of Impact	Extent of Impact	No-Go Areas
Creation of employment and business opportunities associated with the operational phase	<u>Direct impacts:</u> » Creation of employment opportunities » Creation of business and procurement opportunities <u>Indirect impacts:</u> » Support for local economy. » Creation of training and skills development opportunities	Local-Regional	N/A
Description of expected significance of impact			
The direct employment opportunities associated with the operational phase of renewable energy projects are relatively limited. However, a review of the REIPPPP indicates that the benefits associated with the operation of renewable energy projects are significant and extend beyond direct employment opportunities.			
Gaps in knowledge & recommendations for further study			
» Collection and review of information on REIPPPP.			
Recommendations with regards to general field surveys			
» N/A. Desktop review of REIPPPP.			

4.4.3 Generate income for affected landowner

The proponent will enter into rental agreements with the affected landowners for the use of the land for the establishment of the proposed PV SEFs. In terms of the rental agreement the affected landowner will be paid an annual amount dependent upon the area affected. The additional income will reduce the risk to his livelihoods posed by droughts and fluctuating market prices for sheep and farming inputs, such as fuel, feed etc. Given the low carrying capacity of the veld the additional income represents a significant benefit for the affected landowner.

Table 4.10: Assessment of benefits associated with income generated for the affected farmer(s)

Nature: The generation of additional income represents a significant benefit for the local affected farmer(s) and reduces the risks to their livelihoods posed by droughts and fluctuating market prices for sheep and farming inputs, such as feed etc.			
Issue	Nature of Impact	Extent of Impact	No-Go Areas
Generation of additional income for affected landowners	<u>Direct impacts:</u> » Additional income to support farming <u>Indirect impacts:</u> » Opportunity to invest and expand farming operations and create more employment opportunities on the farm.	Local	N/A
Description of expected significance of impact Evidence from the other renewable energy projects indicates that the generation of additional income represents a significant benefit for the local affected farmer(s) and reduces the risks to their livelihoods posed by droughts and fluctuating market prices for sheep and farming inputs, such as feed etc.			
Gaps in knowledge & recommendations for further study » Collection of information on existing farming operations and activities.			
Recommendations with regards to general field surveys » Site visit and interviews with local farmers and representatives from local farming associations etc.			

4.4.4 Benefits associated with the socio-economic development contributions

The REIPPPP has been designed not only to procure energy but has also been structured to contribute to the broader national development objectives of job creation, social upliftment and broadening of economic ownership. Socio-economic development (SED) contributions are an important focus of the REIPPPP and are aimed at ensuring that local communities benefit directly from the investments attracted into the area. These contributions are linked to Community Trusts and accrue over the project operation life and, in so doing, create an opportunity to generate a steady revenue stream over an extended period. This revenue can be used to fund development initiatives in the area and support the local community. The long-term duration of the revenue stream also allows local municipalities and communities to undertake long term planning for the area.

Table 4.11: Assessment of benefits associated with socio-economic development contributions

Nature: Benefits associated with support for local community's form SED contributions			
Issue	Nature of Impact	Extent of Impact	No-Go Areas
Support for local economic development and investment	<u>Direct impacts:</u> » Support local economic development » Create employment opportunities » Create skills development and training opportunities » Improve basic services <u>Indirect impacts:</u> » Up-grade local municipalities and improve quality of life of local communities	Local-Regional	N/A
<p>Description of expected significance of impact The revenue from the proposed PV SEF can be used to support a number of social and economic initiatives in the area, including:</p> <ul style="list-style-type: none"> • Creation of jobs. • Education. • Support for and provision of basic services. • School feeding schemes. • Training and skills development. • Support for SMME's. 			
<p>Gaps in knowledge & recommendations for further study » Collection and review of information on REIPPPP.</p> <p>Recommendations with regards to general field surveys » N/A. Desktop review of REIPPPP.</p>			

4.4.5 Visual impact and impact on sense of place

The proposed PV SEFs have the potential to impact on the areas existing rural sense of place. Based on an initial assessment of the location the potential impact on the areas sense of place associated with each individual PV SEF is likely to be limited. This will be confirmed during the assessment phase and the findings of the Visual Impact Assessment (VIA).

Table 4.12: Visual impact and impact on sense of place

Nature: Visual impact associated with the proposed facility and associated infrastructure and the potential impact on the areas rural sense of place.			
Issue	Nature of Impact	Extent of Impact	No-Go Areas
Impact on rural sense of place	<u>Direct impacts:</u> » Change in rural sense of place <u>Indirect impacts:</u> » Potential impact on property values and hospitality operations.	Local	N/A
Description of expected significance of impact Renewable energy projects do have the potential to impact on an areas sense of place. In some instances, this can impact on existing or proposed tourist facilities and also on property values. In other cases local landowners have indicated that the potential visual impacts are not regarded as an issue.			
Gaps in knowledge & recommendations for further study » Collection of information on location of existing farming and hospitality operations and activities.			
Recommendations with regards to general field surveys » Site visit and interviews with local farmers and representatives from local municipality and farming and hospitality associations etc.			

4.4.6 Potential impact on property values

The potential visual impacts associated with the proposed REF PV SEFs have the potential to impact on property values. Based on the results of a literature review undertaken for wind farms the potential impact on property values in rural areas is likely to be limited. The findings are also likely to be relevant to PV SEFs. In this regard a study undertaken in Australia in 2016 (Urbis Pty Ltd) found that:

- Appropriately located wind farms within rural areas, removed from higher density residential areas, are unlikely to have a measurable negative impact on surrounding land values.
- There is limited available sales data to make a conclusive finding relating to value impacts on residential or lifestyle properties located close to wind farm turbines, noting that wind farms in NSW have been constructed in predominantly rural areas.

The impact of PV SEFs on property values is likely to be lower than the impact of WEFs due to the reduced visual impact. The Impact of the proposed PV SEFs on property values is therefore likely to be low. These results will be confirmed based on the findings of the site visit and the VIA.

Table 4.13: Assessment of potential impact on property values and operations

Nature: Potential impact of the PV SEFs on property values. This is usually linked to the visual impact associated with the proposed facility and associated infrastructure and the potential impact on the areas rural sense of place.			
Issue	Nature of Impact	Extent of Impact	No-Go Areas
Impact on rural sense of place and associated impact on property values.	<u>Direct impacts:</u> » Change in rural sense of place and impact on property values <u>Indirect impacts:</u> » Potential impact on hospitality operations.	Local	N/A
Description of expected significance of impact Renewable energy projects do have the potential to impact on an areas sense of place. In some instances, this can impact on property values. In other cases, local landowners have indicated that the potential visual impacts and impact on property values are not regarded as an issue.			
Gaps in knowledge & recommendations for further study » Collection of information on location of existing farming and hospitality operations and activities.			
Recommendations with regards to general field surveys » Site visit and interviews with local farmers and representatives from local municipality and farming and hospitality associations etc.			

4.4.7 Potential impact on tourism

The potential visual impacts associated with the proposed PV SEFs have the potential to impact on tourism facilities and tourism in the area. Based on the findings of the literature review there is limited evidence to suggest that the proposed SEF would impact on the tourism in the PKSDM and ELM at a local and regional level. The potential impact on local tourism facilities in the vicinity of the sites will be confirmed during the Assessment Phase.

Table 4.14: Impact on tourism in the region

Nature: Potential impact of PV SEFS on local tourism. This is usually linked to the visual impact associated with the proposed facility and associated infrastructure and the potential impact on the areas rural sense of place.			
Issue	Nature of Impact	Extent of Impact	No-Go Areas
Impact on existing and future tourism operations.	<u>Direct impacts:</u> » Change in rural sense of place and impact on tourism activities. <u>Indirect impacts:</u> » Potential impact on future development of hospitality operations.	Local	N/A
Description of expected significance of impact Renewable energy projects do have the potential to impact on an areas sense of place. In some instances, this can impact on tourism activities. In other cases, local landowners have indicated that the potential visual impacts and impact on tourism activities are not regarded as an issue.			
Gaps in knowledge & recommendations for further study			

- » Collection of information on location of existing farming and hospitality operations and activities.

Recommendations with regards to general field surveys

- » Site visit and interviews with local farmers and representatives from local municipality and farming and hospitality associations etc.

4.5 CUMULATIVE IMPACT ON SENSE OF PLACE

The potential cumulative impacts on the areas sense of place will be largely linked to potential visual impacts. In this regard the Scottish Natural Heritage (2005) describes a range of potential cumulative landscape impacts associated with wind farms on landscapes. These issues are also likely to be relevant to solar facilities and associated infrastructure. The relevant issues identified by Scottish Natural Heritage study include:

- Combined visibility (whether two or more wind farms will be visible from one location).
- Sequential visibility (e.g. the effect of seeing two or more wind farms along a single journey, e.g. road or walking trail).
- The visual compatibility of different wind farms in the same vicinity.
- Perceived or actual change in land use across a character type or region.
- Loss of a characteristic element (e.g. viewing type or feature) across a character type caused by developments across that character type.

The guidelines also note that cumulative impacts need to be considered in relation to dynamic as well as static viewpoints. The experience of driving along a tourist road, for example, needs to be considered as a dynamic sequence of views and visual impacts, not just as the cumulative impact of several developments on one location. The viewer may only see one renewable energy facility and the associated infrastructure at a time, but if each successive stretch of the road is dominated by views of renewable energy facilities, then that can be argued to be a cumulative visual impact (National Wind Farm Development Guidelines, DRAFT - July 2010).

As indicated above, the potential impact of the proposed individual PV SEFs and associated infrastructure on the areas sense of place is likely to be limited. The cumulative impacts are also likely to be limited. This will be confirmed during the assessment phase.

Table 4.15: Cumulative impacts on sense of place and the landscape

Nature: Visual impacts associated with the establishment of more than one PV SEF and the potential impact on the area’s rural sense of place and character of the landscape.			
Issue	Nature of Impact	Extent of Impact	No-Go Areas
Cumulative impact on rural sense of place	<u>Direct impacts:</u> » Change in rural sense of place <u>Indirect impacts:</u> » Potential impact on property values and hospitality operations.	Local-Regional	N/A
Description of expected significance of impact The establishment of renewable energy projects do have the potential to have a cumulative impact on an areas sense of place. The significance will depend on the location and number of REFs proposed. This will be informed by the findings from the site visit and review of the VIA.			
Gaps in knowledge & recommendations for further study » Collection of information on location of existing farming and hospitality operations and activities.			
Recommendations with regards to general field surveys » Site visit and interviews with local farmers and representatives from local municipality and farming and hospitality associations etc.			

4.6 CUMULATIVE IMPACT ON LOCAL SERVICES AND ACCOMMODATION

The establishment of a number of PV SEFs and other REFs has the potential to place pressure on local services and accommodation, specifically during the construction phase. The objective will be to source as many low and semi-skilled workers for the construction phase from the ELM. This will reduce the pressure on local services and accommodation and the nearby town of De Aar. The capacity of accommodate workers will be addressed during the assessment phase.

The potential impact should also be viewed within the context of the potential positive cumulative impacts for the local economy associated with the establishment of the proposed facility and associated renewable energy projects in the ELM. These benefits will create opportunities for investment in the ELM, including the opportunity to upgrade and expand existing services and the construction of new houses.

Table 4.16: Cumulative impacts on local services

Nature: The establishment of a number of renewable energy facilities and associated projects, such as the proposed SEF, in the ELM has the potential to place pressure on local services, specifically medical, education and accommodation			
Issue	Nature of Impact	Extent of Impact	No-Go Areas
Cumulative impact on local services, including accommodation, medical and emergency services	<u>Direct impacts:</u> » Pressure on available services (medial, emergency etc.) » Pressure on available accommodation. <u>Indirect impacts:</u> » Potential impact on rentals and cost of services.	Local-Regional	N/A
Description of expected significance of impact The establishment of renewable energy projects do have the potential to have a cumulative impact on local services, specifically accommodation and emergency services. The significance will depend on the number of REFs proposed and timing of construction.			
Gaps in knowledge & recommendations for further study » Collection of information on number REFs proposed and timing of construction phase.			
Recommendations with regards to general field surveys » Site visit and interviews with local municipal officials and representatives from hospitality associations etc.			

4.7 CUMULATIVE IMPACT ON LOCAL ECONOMY

In addition to the potential negative impacts, the establishment of renewable energy facilities and associated infrastructure, including the proposed PV SEFs, will also create several socio-economic opportunities for the ELM. The positive cumulative opportunities include creation of employment, skills development and training opportunities, and downstream business opportunities.

The potential cumulative benefits for the local and regional economy are associated with both the construction and operational phase of renewable energy projects and associated infrastructure and extend over a period of 20-25 years. However, steps must be taken to maximise employment opportunities for members from the local communities in the area and support skills development and training programmes.

Table 4.17: Cumulative impacts on local economy

Nature: The establishment of renewable energy facilities and associated projects, such as the SEF, in the ELM will create employment, skills development and training opportunities, creation of downstream business opportunities.			
Issue	Nature of Impact	Extent of Impact	No-Go Areas
Cumulative benefits in terms of creating employment, business, and skills development opportunities for the local municipality	<u>Direct impacts:</u> » Creation of employment, business, and skills development opportunities for the local municipality <u>Indirect impacts:</u> » Support local economic development.	Local-Regional	N/A
Description of expected significance of impact The establishment of renewable energy projects do have the potential to create benefits in terms of creating employment, business, and skills development opportunities for the local municipality. The significance will depend on the number of REFs proposed and timing of construction.			
Gaps in knowledge & recommendations for further study » Collection of information on number REFs proposed and timing of construction phase.			
Recommendations with regards to general field surveys » Site visit and interviews with local municipal officials and representatives from hospitality associations etc.			

4.8 ASSESSMENT OF NO-DEVELOPMENT OPTION

The primary goal of the Project is to assist in providing additional capacity to Eskom to assist in addressing the current energy supply constraints. The project also aims to reduce the carbon footprint associated with energy generation. As indicated above, energy supply constraints and the associated load shedding have had a significant impact on the economic development of the South African economy. South Africa also relies on coal-powered energy to meet more than 90% of its energy needs. South Africa is therefore one of the highest per capita producers of carbon emissions in the world and Eskom, as an energy utility, has been identified as the world’s second largest producer carbon emissions.

The No-Development option would represent a lost opportunity for South Africa to improve energy security and supplement is current energy needs with clean, renewable energy. Given South Africa’s current energy security challenges and its position as one of the highest per capita producers of carbon emissions in the world, this would represent a significant negative social cost.

Table 4.18: Assessment of no-development option

Nature: The no-development option would result in the lost opportunity for South Africa to improve energy security and assist to support with the development of clean, renewable energy.			
Issue	Nature of Impact	Extent of Impact	No-Go Areas
Lost opportunity to improve energy security and develop clean, renewable energy	<u>Direct impacts:</u> » Energy security » Creation of employment, business, and skills development opportunities for the local municipality <u>Indirect impacts:</u> » Address climate change.	Local-Regional	N/A
Description of expected significance of impact The establishment of renewable energy projects will improve energy security and create benefits in terms of creating employment, business, and skills development opportunities. These benefits would be foregone if the REF is not developed.			
Gaps in knowledge & recommendations for further study » Collection and review of information on REIPPPP.			
Recommendations with regards to general field surveys » N/A. Desktop review of REIPPPP.			

4.9 ASSESSMENT OF DECOMMISSIONING PHASE

The number of jobs lost will be in the region of 20 for each PV SEF. The impacts associated with the loss of jobs during the decommissioning phase can be affectively mitigated. With mitigation the significance is likely to be **Low Negative**.

4.10 INITIAL ASSESSMENT OF POTENTIAL SIGNIFICANCE

Table 4.19 and 4.20 provide a summary of the potential significance ratings for the social impacts associated with the construction and operational phase. The significance ratings apply to each PV SEF. The initial assessment of the potential significance is based on the findings of SIAs undertaken for PV SEFs, including PV SEFs located in the vicinity of De Aar. The findings will be confirmed during the Assessment Phase, which will include a site visit and interviews with key stakeholders.

Table 4.19: Summary of social impacts during construction phase

Impact	Significance No Mitigation/Enhancement	Significance With Mitigation/Enhancement
Creation of employment and business opportunities	Medium (Positive)	Medium (Positive)
Presence of construction workers and potential impacts on family structures and social networks	Low (Negative)	Low (Negative)
Influx of job seekers	Low (Negative)	Low (Negative)

Safety risk, stock theft and damage to farm infrastructure associated with presence of construction workers	Medium (Negative)	Low (Negative)
Increased risk of grass fires	Medium (Negative)	Low (Negative)
Impact of heavy vehicles and construction activities	Medium (Negative)	Low (Negative)

Table 4.20: Summary of social impacts during operational phase

Impact	Significance No Mitigation/Enhancement	Significance With Mitigation/Enhancement
Establish infrastructure to generate renewable energy	Moderate (Positive)	Moderate (Positive)
Creation of employment and business opportunities during maintenance	Low (Positive)	Medium (Positive)
Benefit associated with community trust	Moderate (Positive)	High (Positive)
Benefits for landowners	Low (Positive)	Medium (Positive)
Visual impact and impact on sense of place	Low-Moderate (Negative)	Low-Moderate (Negative)
Impact on property values	Low-Moderate (Negative)	Low-Moderate (Negative)
Impact on tourism	Low-Moderate (Negative)	Low-Moderate (Negative)

4.11 CONCLUSION

Based on the findings of the Social Scoping Assessment the establishment of Hercules PV SEF Cluster and associated infrastructure will create employment and business opportunities for locals in the ELM during both the construction and operational phase of the project. Based on other PV SEF projects all of the potential negative impacts, with the exception of the impact on sense of place, can also be effectively mitigated.

The establishment of a Community Trust will also benefit the local community. The enhancement measures listed in the report should be implemented in order to maximise the potential benefits. Based on other PV SEF projects the significance of this impact is likely to be **High Positive**. The proposed development also represents an investment in clean, renewable energy infrastructure, which, given the negative environmental and socio-economic impacts associated a coal-based energy economy and the challenges created by climate change, represents a significant positive social benefit for society as a whole. The establishment of the proposed Hercules PV SEF Cluster and associated infrastructure including a battery energy storage system (BESS) is therefore supported by the findings of the Social Scoping Assessment.

4.12 PLAN OF STUDY FOR SIA

The proposed approach to the SIA is based on the Guidelines for SIA endorsed by Western Cape Provincial Environmental Authorities (DEA&DP) in 2007. The Guidelines are based on accepted international best practice guidelines, including the Guidelines and Principles for Social Impact Assessment (Inter-organizational Committee on Guidelines and Principles for Social Impact Assessment, 1994) and IAIA Guidance for

Assessing and Managing Social Impacts (2015). The approach to the study will involve:

- Collection and review of reports and baseline socio-economic data on the area. This includes socio-economic characteristics of the affected areas, current and future land uses, and land uses planning documents relating to the study area and surrounds.
- Identification of the components associated with the construction and operational phase of the proposed project, including estimate of total capital expenditure, number of employment opportunities created and breakdown of the employment opportunities in terms of skill levels (low, medium and high skilled), breakdown of wages per skill level, assessment procurement policies etc.;
- Site visit and interviews with key affected parties, including local communities, local landowners, key government officials (local and regional), the client, local farmers associations, tourism and conservation officials, chamber of commerce etc.
- Review of key findings of the key specialist studies that have a bearing on the SIA, such as the Visual Impact Assessment (VIA). This information will also be used to inform the engagement with the affected landowners.
- Identification and assessment of key social issues and assessment of potential impacts (negative and positive) associated with the construction, operational and decommissioning phase of the project.
- Identification and assessment of cumulative impacts (positive and negative).
- Identification of appropriate measures to avoid, mitigate, enhance and compensate for potential social impacts.
- Preparation of Social Impact Assessment (SIA) Report.

The site visit will be undertaken during the Assessment Phase of the SIA. The site visit will include interviews with key stakeholders and interested and affected parties.

ANNEXURE A

REFERENCES

- The National Energy Act (2008).
- The White Paper on the Energy Policy of the Republic of South Africa (December 1998).
- The White Paper on Renewable Energy (November 2003).
- Integrated Resource Plan (IRP) for South Africa (2010-2030).
- The National Development Plan (2011).
- Northern Cape Provincial Growth and Development Strategy (2004-2014).
- Northern Cape Climate Change Response Strategy.
- Northern Cape Spatial Development Framework (2012).
- Northern Cape Province Green Document (2017/2018).
- Pixley Ka Seme Integrated Development Plan (2019-2020).
- Pixley Ka Seme Spatial Development Framework (2017).
- Emathanjeni Integrated Development Plan (2021-2022).
- Green Jobs Study (2011), IDC, DBSA Ltd and TIPS.
- Independent Power Producers Procurement Programme (IPPPP): An Overview (2017), Department of Energy, National Treasury and DBSA.
- Powering the Future: Renewable Energy Roll-out in South Africa (2013), Greenpeace South Africa.

ANNEXURE B: ASSESSMENT METHODOLOGY

METHODOLOGY FOR THE ASSESSMENT OF POTENTIAL IMPACTS

Direct, indirect and cumulative impacts of the above issues, as well as all other issues identified will be assessed in terms of the following criteria:

- The **nature**, which shall include a description of what causes the effect, what will be affected and how it will be affected.
- The **extent**, where it will be indicated whether the impact will be local (limited to the immediate area or site of development), regional, national or international. A score between 1 and 5 will be assigned as appropriate (with a score of 1 being low and a score of 5 being high).
- The **duration**, where it will be indicated whether:
 - * the lifetime of the impact will be of a very short duration (0–1 years) – assigned a score of 1;
 - * the lifetime of the impact will be of a short duration (2-5 years) - assigned a score of 2;
 - * medium-term (5–15 years) – assigned a score of 3;
 - * long term (> 15 years) - assigned a score of 4; or
 - * permanent - assigned a score of 5.
- The **magnitude**, quantified on a scale from 0-10, where a score is assigned:
 - * 0 is small and will have no effect on the environment;
 - * 2 is minor and will not result in an impact on processes;
 - * 4 is low and will cause a slight impact on processes;
 - * 6 is moderate and will result in processes continuing but in a modified way;
 - * 8 is high (processes are altered to the extent that they temporarily cease); and
 - * 10 is very high and results in complete destruction of patterns and permanent cessation of processes.
- The **probability of occurrence**, which shall describe the likelihood of the impact actually occurring. Probability will be estimated on a scale, and a score assigned:
 - * Assigned a score of 1–5, where 1 is very improbable (probably will not happen);
 - * Assigned a score of 2 is improbable (some possibility, but low likelihood);
 - * Assigned a score of 3 is probable (distinct possibility);
 - * Assigned a score of 4 is highly probable (most likely); and
 - * Assigned a score of 5 is definite (impact will occur regardless of any prevention measures).
- The **significance**, which shall be determined through a synthesis of the characteristics described above (refer formula below) and can be assessed as low, medium or high.
- The **status**, which will be described as either positive, negative or neutral.
- The *degree* to which the impact can be *reversed*.
- The *degree* to which the impact may cause *irreplaceable loss of resources*.
- The *degree* to which the impact can be *mitigated*.

The **significance** is determined by combining the criteria in the following formula:

$S=(E+D+M)P$; where

S = Significance weighting

E = Extent
D = Duration
M = Magnitude
P = Probability

The **significance weightings** for each potential impact are as follows:

- < 30 points: Low (i.e. where this impact would not have a direct influence on the decision to develop in the area),
- 30-60 points: Medium (i.e. where the impact could influence the decision to develop in the area unless it is effectively mitigated),
- > 60 points: High (i.e. where the impact must have an influence on the decision process to develop in the area).

ANNEXURE C: CV

Tony Barbour

ENVIRONMENTAL CONSULTING AND RESEARCH

10 Firs Avenue, Claremont, 7708, South Africa
(Tel) 27-21-761 2355 - (Fax) 27-21-761 2355 - (Cell) 082 600 8266
(E-Mail) tbarbour@telkomsa.net

Tony Barbour's has 26 years' experience in the field of environmental consulting and management. His experience includes working for ten years as a consultant in the private sector followed by four years at the University of Cape Town's Environmental Evaluation Unit. He has worked as an independent consultant since 2004, with a key focus on Social Impact Assessment. His other areas of interest include Strategic Environmental Assessment and review work.

EDUCATION

- BSc (Geology and Economics) Rhodes (1984);
- B Economics (Honours) Rhodes (1985);
- MSc (Environmental Science), University of Cape Town (1992)

EMPLOYMENT RECORD

- Independent Consultant: November 2004 – current;
- University of Cape Town: August 1996-October 2004: Environmental Evaluation Unit (EEU), University of Cape Town. Senior Environmental Consultant and Researcher;
- Private sector: 1991-August 2000: 1991-1996: Ninham Shand Consulting (Now Aurecon, Cape Town). Senior Environmental Scientist; 1996-August 2000: Steffen, Robertson and Kirsten (SRK Consulting) – Associate Director, Manager Environmental Section, SRK Cape Town.

LECTURING

- University of Cape Town: Resource Economics; SEA and EIA (1991-2004);
- University of Cape Town: Social Impact Assessment (2004-current);
- Cape Technikon: Resource Economics and Waste Management (1994-1998);
- Peninsula Technikon: Resource Economics and Waste Management (1996-1998).

RELEVANT EXPERIENCE AND EXPERTISE

Tony Barbour has undertaken in the region of 260 SIA's, including SIA's for infrastructure projects, dams, pipelines, and roads. All of the SIAs include interacting with and liaising with affected communities. In addition, he is the author of the Guidelines for undertaking SIA's as part of the EIA process commissioned by the Western Cape Provincial Environmental Authorities in 2007. These guidelines have been used throughout South Africa.

Tony was also the project manager for a study commissioned in 2005 by the then South African Department of Water Affairs and Forestry for the development of a Social Assessment and Development Framework. The aim of the framework was to enable the Department of Water Affairs and Forestry to identify, assess and manage social impacts associated with large infrastructure projects, such as dams. The study also included the development of guidelines for Social Impact Assessment, Conflict Management, Relocation and Resettlement and Monitoring and Evaluation.

Countries with work experience include South Africa, Namibia, Angola, Botswana, Zambia, Lesotho, Swaziland, Ghana, Senegal, Nigeria, Mozambique, Mauritius, Kenya, Ethiopia, Oman, South Sudan, Sudan and Armenia.

ANNEXURE D: DECLARATION OF INDEPENDENCE

The specialist declaration of independence in terms of the Regulations_

I, Tony Barbour , declare that --

General declaration:

I act as the independent specialist in this application;

I will perform the work relating to the application in an objective manner, even if this results in views and findings that are not favourable to the applicant;

I declare that there are no circumstances that may compromise my objectivity in performing such work;

I have expertise in conducting the specialist report relevant to this application, including knowledge of the Act, Regulations and any guidelines that have relevance to the proposed activity;

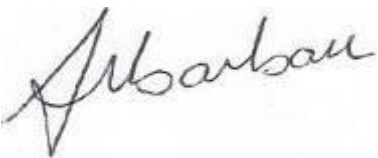
I will comply with the Act, Regulations and all other applicable legislation;

I have no, and will not engage in, conflicting interests in the undertaking of the activity;

I undertake to disclose to the applicant and the competent authority all material information in my possession that reasonably has or may have the potential of influencing - any decision to be taken with respect to the application by the competent authority; and - the objectivity of any report, plan or document to be prepared by myself for submission to the competent authority;

all the particulars furnished by me in this form are true and correct;
and

I realise that a false declaration is an offence in terms of regulation 48 and is punishable in terms of section 24F of the Act.



Signature of the specialist:

Tony Barbour Environmental Consulting and Research

Name of company (if applicable):

22 September 2022

Date: