



GEORGE
TEL: +27 (0) 44 873 4923 **FAX:** +27 (0) 44 874 5953
EMAIL: info@sesc.net **WEBSITE:** www.sesc.net
ADDRESS: Unit 17 Cathedral Square,
Cathedral Street, George, 6530
PO BOX: 9087, George, 6530

CAPE TOWN
TEL: +27 (0) 21 554 5195 **FAX:** +27 (0) 86 575 2869
EMAIL: betsy@sesc.net **WEBSITE:** www.sesc.net
ADDRESS: Tableview, Cape Town, 7441
PO BOX: 443, Milnerton, 7435

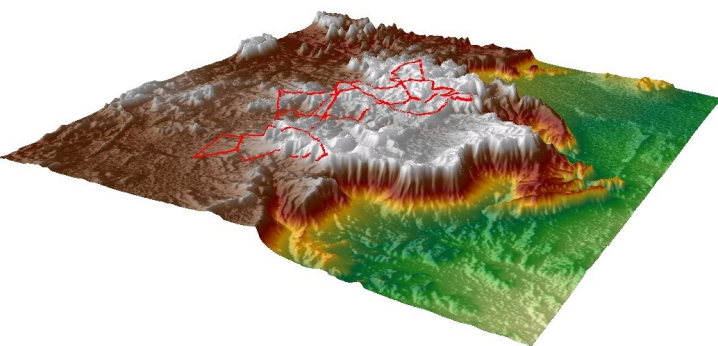
ANNEXURE F - PUBLIC PARTICIPATION PROCESS

Appendix F2 – Pre-Application Public Participation undertaken

Appendix F2a - Notifications sent and Background Information Documents



THE PROPOSED WIND ENERGY FACILITIES NEAR BEAUFORT WEST, CENTRAL KAROO DISTRICT MUNICIPALITY, WESTERN CAPE



INVITATION TO REGISTER AS AN INTERESTED AND AFFECTED PARTY

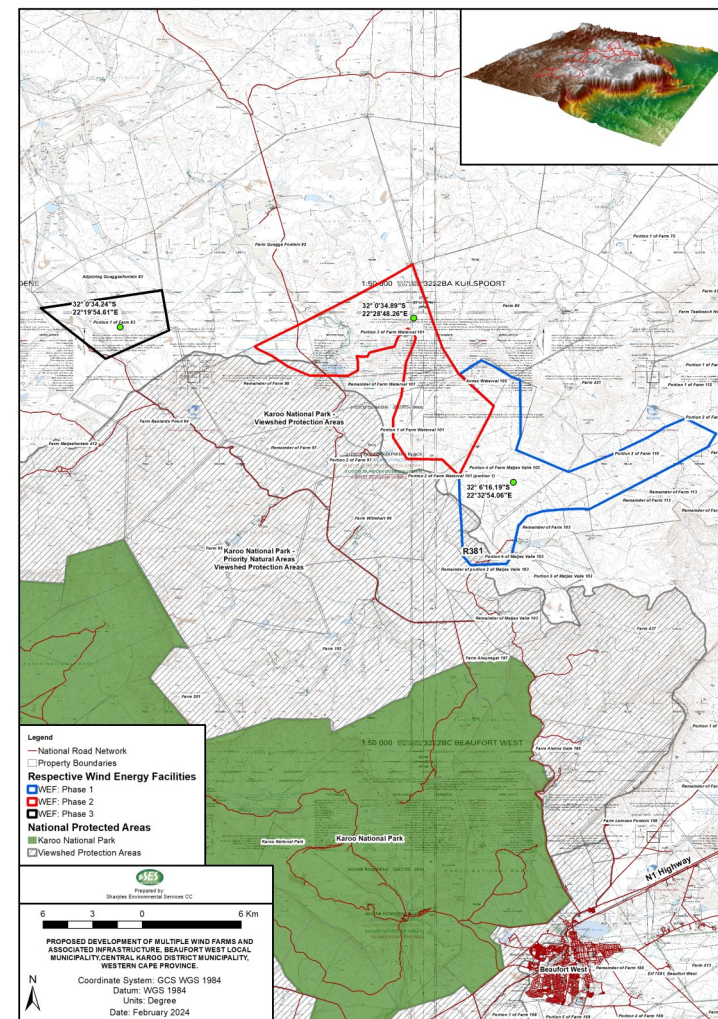
PROPOSED SCOPE

Sharples Environmental Services CC has been appointed by Mulilo Renewable Project Developments to undertake the Environmental Impact Assessments for the Wind Energy Facilities and Associated infrastructure projects located on multiple properties along the R381, leading north from Beaufort West to Loxton. Karoo Wind Power will be a wind energy development with a combined export capacity of 600 MW which will be located approximately 30 km North of Beaufort West.

The proposed project consists of three wind energy facilities, including the transmission corridor required for the respective facilities. The proposed developments will be located upon numerous properties. The combined development area of the proposed developments will be approximately 12 707 ha.

Due to the extent and nature of the proposed development, activities listed in terms of Listing Notice 1, 2, and 3 will be triggered in terms of the Environmental Impact Assessment Regulations of 2014, as amended (GNR 326 of 2017; GNR 517 of 2021). Therefore, an Environmental Impact Assessment will be required to be undertaken in terms of the EIA Regulations of 2014, as amended. The proposed developments are located within a Renewable Energy Development Zone as promulgated in terms of GN 114 of 2018). Therefore, as per GNR 142 of 2021, as amended, a Basic Assessment Process in terms of the EIA Regulations of 2014, as amended must be undertaken. In addition to the adjusted process to be followed, the beforementioned government notice allows for a shortened decision-making period by the Competent Authority.

PROJECT LOCALITY



BASIC ASSESSMENT PROCESS

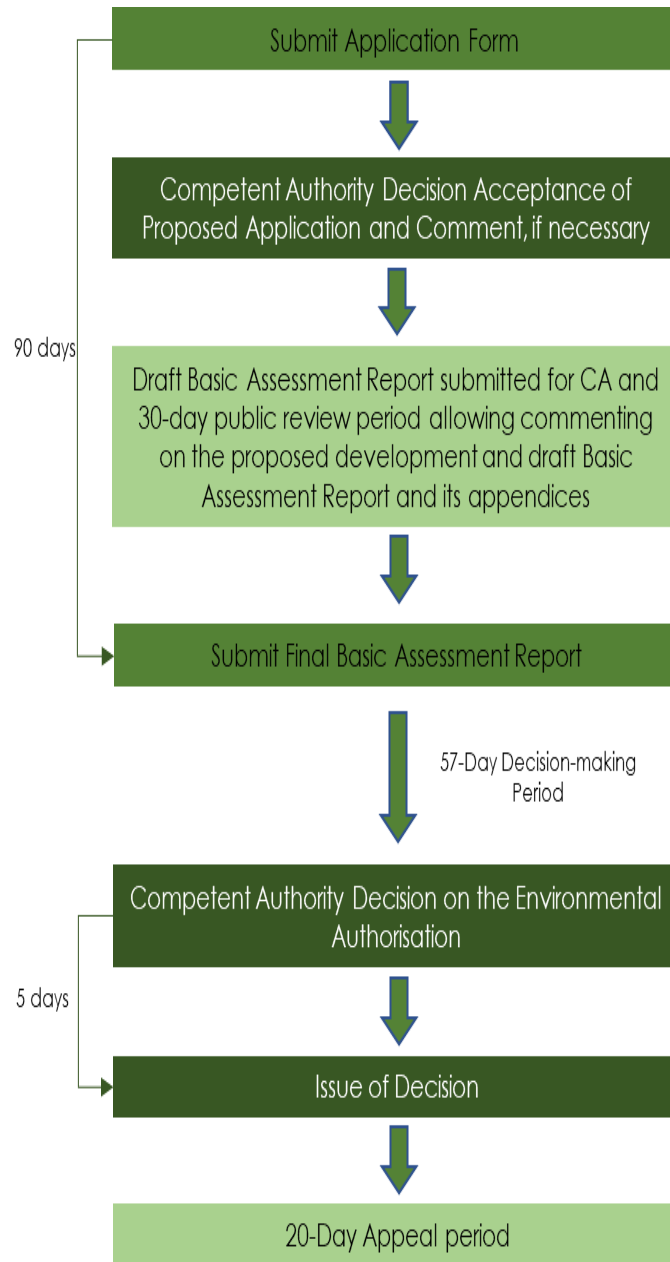
A Basic Assessment Process, in terms of the Environmental Impact Assessment (EIA) Regulations of 2014, promulgated in terms of the National Environmental Management Act, 1998 (NEMA), will be undertaken for the purpose of obtaining Environmental Authorisation for the proposed development. The authorisation process promulgated in terms of GNR 114 of 2018 will be followed.

The National Department of Forestry, Fisheries & Environment is the Competent Authority for the proposed projects.

SPECIALIST REPORTS TO BE COMPILED

- Aquatic Biodiversity Impact Assessment
- Terrestrial Biodiversity Impact Assessment / Plant Species Assessment
- Heritage and Palaeontological Assessment
- Radio Frequency Interference Assessment
- Noise Impact Assessment
- Civil Aviation Assessment
- Defence Assessment
- Avifaunal Assessment
- Bats Impact Assessment
- Socio-Economic Assessment
- Traffic Impact Assessment
- Visual Impact Assessment
- Agricultural Assessment
- Geotechnical Assessment

PROCESS FOR BASIC ASSESSMENT



You are invited to register as an Interested and Affected Party (I&AP) and to be notified when the relevant documents are made available

Please provide the following:

- Name & Surname
- Contact details (preferred method of notification e.g. email, fax etc.)
- Indicate any direct business, financial, personal, or other interest you have in the application to the contact information below.
- Should you wish to, you may provide a comment.

Availability of the Report:

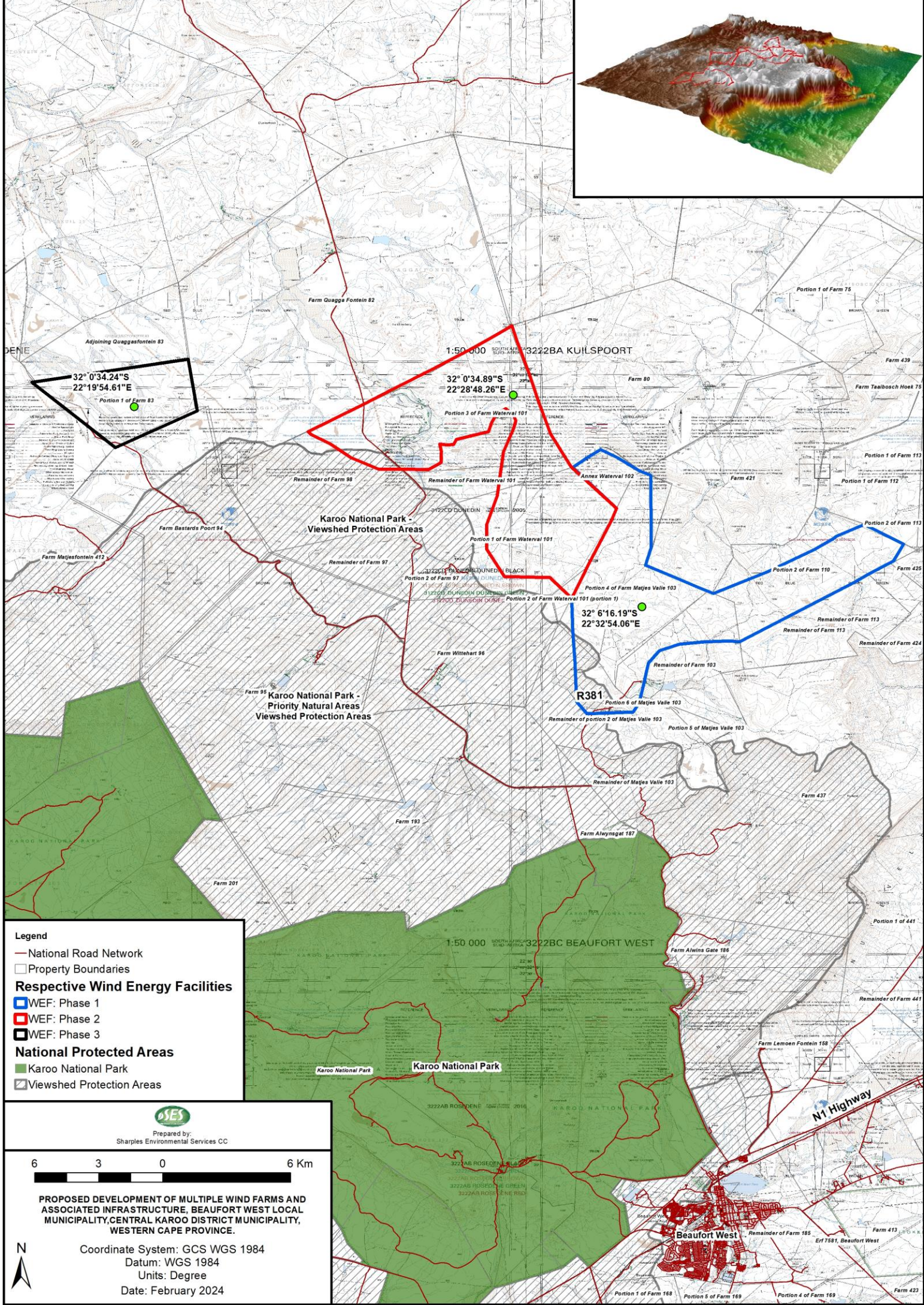
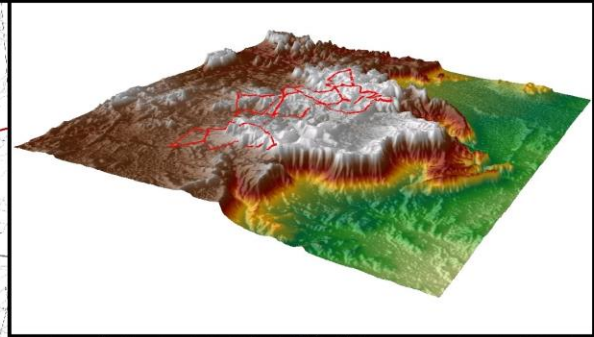
The proposed project report and associated documents will be made available on SES's website (www.sescc.net) under the "Public documents" section.

Furthermore, a hard copy of the report will also be left at the Beaufort West Library for consideration when the official Public Review Period for the projects begin.

Contact us:

-  madeleine@sescc.net
-  PO Box 443, Milnerton, 7435
-  (021) 554 5194
-  www.sescc.net





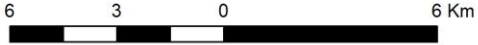
32° 0'34.24"S
22° 19'54.61"E
Portion 1 of Farm 83

1:50 000 SOUTH AFRICAN GRID
3222BA KUILSPOORT
32° 0'34.89"S
22° 28'48.26"E

32° 6'16.19"S
22° 32'54.06"E

- Legend**
- National Road Network
 - Property Boundaries
 - Respective Wind Energy Facilities**
 - WEF: Phase 1
 - WEF: Phase 2
 - WEF: Phase 3
 - National Protected Areas**
 - Karoo National Park
 - ▨ Viewshed Protection Areas

 Prepared by:
Sharples Environmental Services CC



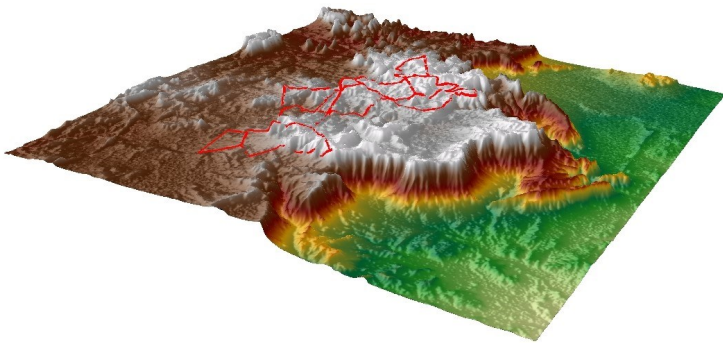
PROPOSED DEVELOPMENT OF MULTIPLE WIND FARMS AND ASSOCIATED INFRASTRUCTURE, BEAUFORT WEST LOCAL MUNICIPALITY, CENTRAL KAROO DISTRICT MUNICIPALITY, WESTERN CAPE PROVINCE.



Coordinate System: GCS WGS 1984
Datum: WGS 1984
Units: Degree
Date: February 2024



DIE VOORGESTELDE WIND ENERIE FASILITEITE NABY BEAUFORTWES, SENTRALE KAROO DISTRIK MUNISIPALITEIT, WESKAAP



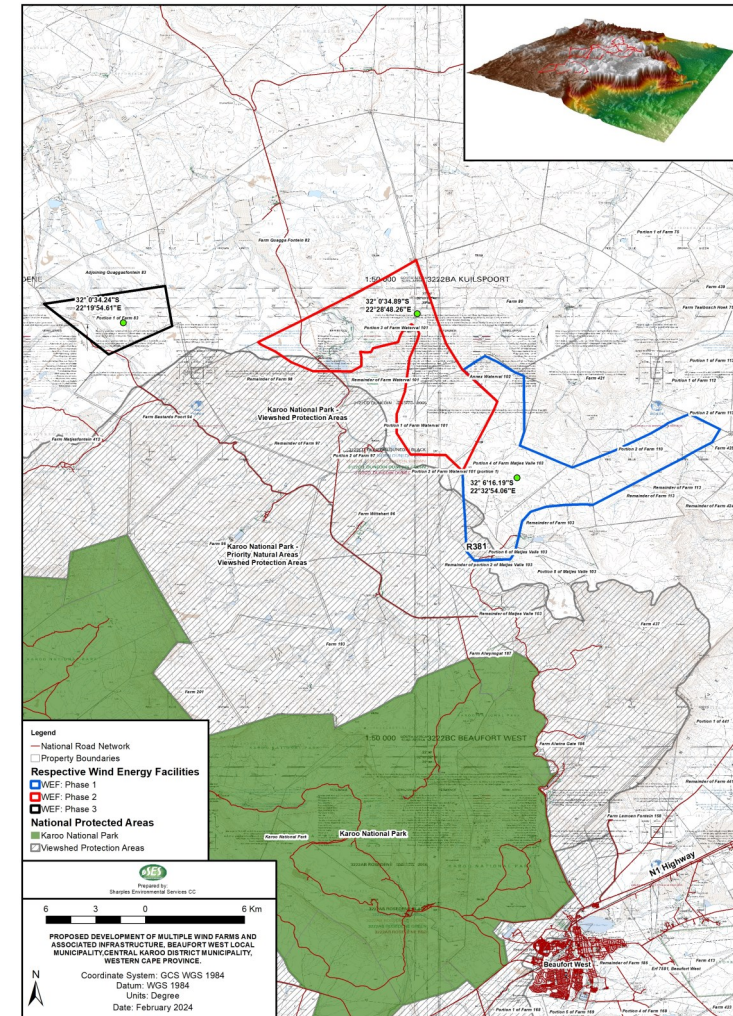
VOORGESTELDE OMVANG

Sharples Environmental Services cc is deur Mulilo Renewable Project Developments aangestel om die omgewingsimpakbeplanning te onderneem vir die windenergiefasiliteite en geassosieerde infrastruktuurprojekte geleë op verskeie eiendomme langs die R381, wat noord van Beaufort-Wes na Loxton lei. Karoo Wind Power sal 'n windenergie-ontwikkeling wees met 'n gesamentlike uitvoerkapasiteit van 600 MW wat ongeveer 30 km noord van Beaufort-Wes geleë sal wees.

Die voorgestelde projek bestaan uit drie windenergie-fasiliteite, insluitend die transmissiekorridor wat vir die onderskeie fasiliteite benodig word. Die voorgestelde ontwikkelings sal op talle eiendomme geleë wees. Die gesamentlike oppervlakte van die voorgestelde ontwikkelings sal ongeveer 12 707 ha wees.

Weens die omvang en aard van die voorgestelde ontwikkeling, sal aktiwiteite gelys in terme van Noteringskennisgewing 1, 2 en 3 ingevolge die Omgewingsimpakstudieregulasies van 2014, soos gewysig (GNR 326 van 2017; GNR 517 van 2021) geaktiveer word.). Daarom sal 'n Omgewingsimpakstudie vereis word om onderneem te word ingevolge die OIB-regulasies van 2014, soos gewysig. Die voorgestelde ontwikkelings is geleë binne 'n Hernubare Energie Ontwikkelingsone soos afgekondig ingevolge GK 114 van 2018). Daarom, soos per GNR 142 van 2021, soos gewysig, moet 'n Basiese Assesseringsproses ingevolge die OIB-regulasies van 2014, soos gewysig, onderneem word. Benewens die aangepaste proses wat gevolg moet word, maak die voorgenoemde regeringkennisgewing voorsiening vir 'n verkorte besluitnemingstydperk deur die Bevoegde Owerheid.

PROJEK LIGGING



UITNODIGING OM AS BELANGHEBBENDE OF 'N GEAFFEKTEERDE PARTY TE REEGISTREER



BASIESE ASSESSERINGSPROSES

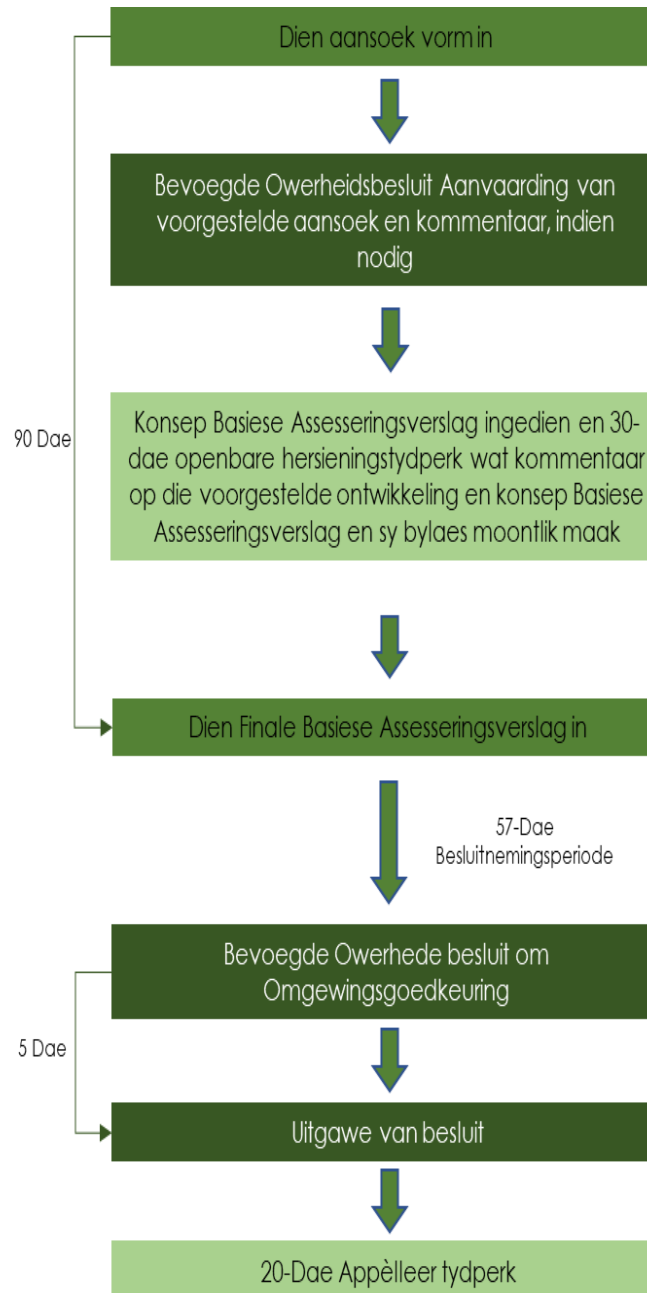
'n Basiese Evalueringsproses, ingevolge die Omgewingsimpakbepaling (OIB) Regulasies van 2014, afgekondig ingevolge die Nasionale Omgewingsbestuurswet, 1998 (WNOB), sal onderneem word met die doel om Omgewingsmagtigings vir die voorgestelde ontwikkeling te verkry. Die magtigingsproses wat ingevolge GNR 114 van 2018 afgekondig is, sal gevolg word.

Die Nasionale Departement van Bosbou, Visserye en Omgewing is die Bevoegde Owerheid vir die voorgestelde projekte.

SPECIALISVERSLAE WAT SAAMGESTEL SAL WORD VIR DIE PROJEK

- Akwatiese Biodiversiteit Impak Evaluering
- Terrestriële Biodiversiteit Impak Assessering / Plant Spesie Assessering
- Erfenis en Paleontologiese Assessering
- Radiofrekwensie-interferensie-evaluering
- Geraasimpakbepaling
- Burgerlugvaartevaluering
- Verdedigingsbeoordeling
- Avifaunal Assessering
- Vlermuise impakbepaling
- Sosio-ekonomiese assessering
- Verkeersimpakbepaling
- Visuele impakbepaling
- Landbou Assessering
- Geotegniese Assessering

PROSES VIR BASIESE ASSESSERING



U word Hiermee uitgenooi om te registreer as 'n Belangehebbende & Geaffekteerde Party (B&GP) om in kennisgestel te word wanneer die toepaslike dokumente beskikbaar gestel word

Stuur asseblief die volgende inligting deur na ons:

- Naam en van
- Kontak besonderhede (insluitend die voorgestelde metode van kontak e.g. e-pos, faks ens.)
- Dui asseblief aan indien u enige direkte besigheid, finansiële, persoonlike of and belange het in die voorgestelde ontwikkeling. Stuur asseblief die besonderhede aan die ondergeskrewe kontak persoon.
- Sou u will, kan u kommentaar ook deurgestuur word.

Beskikbaarheid van verslag:


Die voorgestelde projek verslag en geassosieerde dokumente sal beskikbaar gestel word op SES se webwerf (www.sescc.net) onder die "Publieke dokumente" afdeling.

Verder sal 'n harde kopie van die verslag sal ook by die Beaufort-Wes Biblioteek nagelaat word vir beooging wanneer die amptelike Publieke Resensie Periode vir die projekte begin.

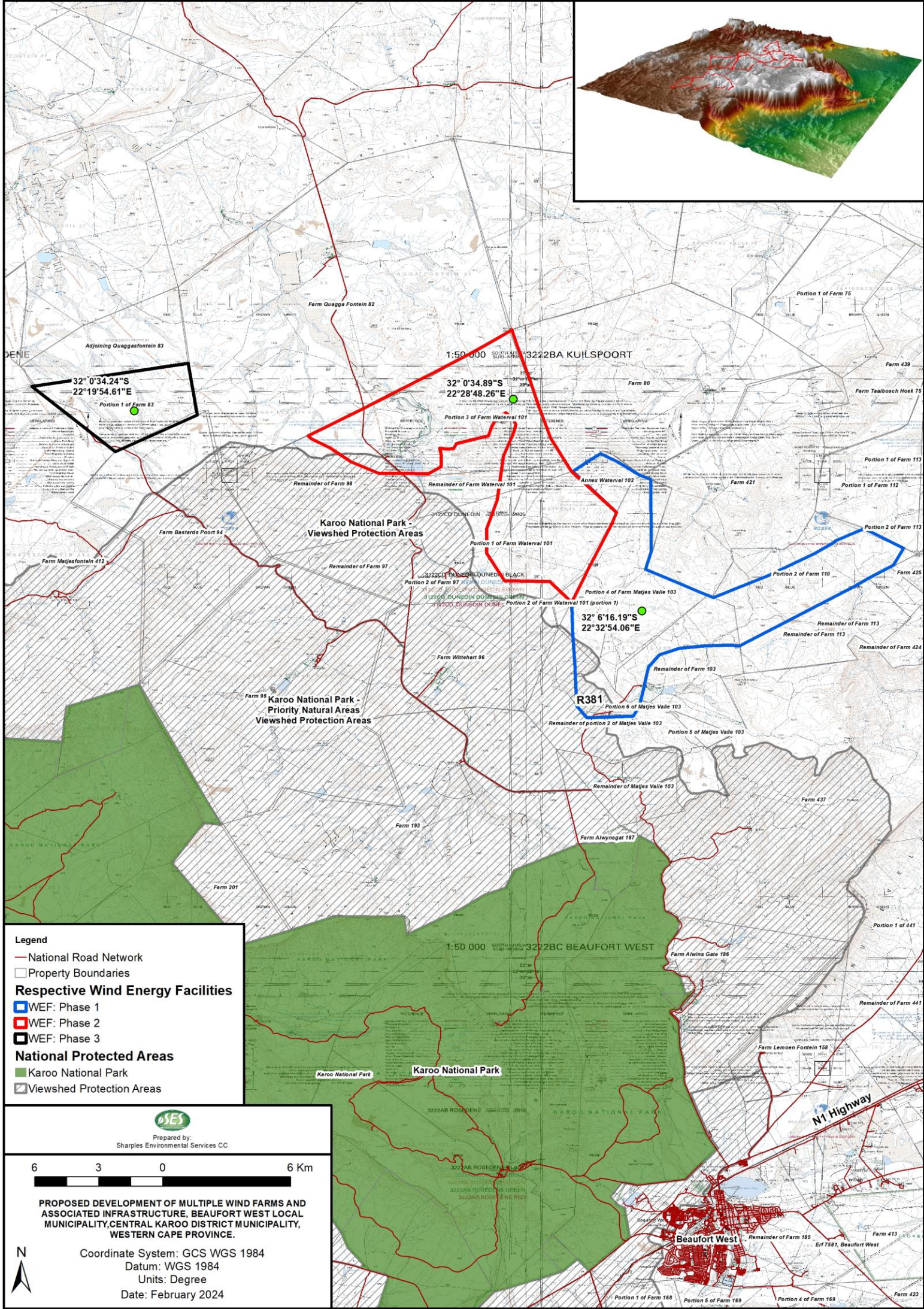
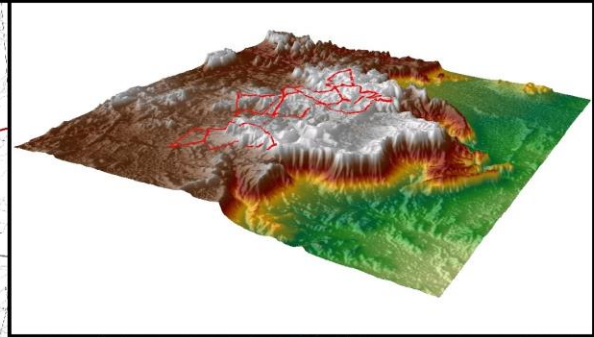
Kontak ons:

 madeleine@sescc.net

 Posbus 443, Milnerton, 7435

 (021) 554 5194

 www.sescc.net



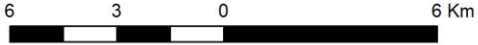
32° 0'34.24"S
22° 19'54.61"E
Portion 1 of Farm 83

1:50 000 SOUTH AFRICAN GRID 3222BA KUILSPOORT
32° 0'34.89"S
22° 28'48.26"E

32° 6'16.19"S
22° 32'54.06"E

- Legend**
- National Road Network
 - Property Boundaries
 - Respective Wind Energy Facilities**
 - WEF: Phase 1
 - WEF: Phase 2
 - WEF: Phase 3
 - National Protected Areas**
 - Karoo National Park
 - ▨ Viewshed Protection Areas

 Prepared by:
Sharples Environmental Services CC



PROPOSED DEVELOPMENT OF MULTIPLE WIND FARMS AND ASSOCIATED INFRASTRUCTURE, BEAUFORT WEST LOCAL MUNICIPALITY, CENTRAL KAROO DISTRICT MUNICIPALITY, WESTERN CAPE PROVINCE.



Coordinate System: GCS WGS 1984
Datum: WGS 1984
Units: Degree
Date: February 2024

N1 Highway

Beaufort West

From: madeleine@sesc.net
Sent: Monday, 19 February 2024 17:05
Cc: Betsy Ditcham
Subject: Karoo WEF: Pre-Application Public Participation: Background Information Documents for the proposed wind energy facilities on multiple farm portions near Beaufort West, Beaufort West Local Municipality.
Attachments: KarooWEF_BID_Mulilo_English_19 February 2024.pdf;
KarooWEF_BID_Mulilo_Afrikaans_19 February 2024.pdf

Dear Commenting Authorities, Stakeholder, and pre-identified Interested & Affected Party,

PRE-APPLICATION PUBLIC PARTICIPATION: NOTIFICATION OF THE INTENT TO SUBMIT MULTIPLE APPLICATIONS FOR ENVIRONMENTAL AUTHORISATION (IN THE FORM OF A BACKGROUND INFORMATION DOCUMENT) TO THE NATIONAL DEPARTMENT OF FORESTRY, FISHERIES AND ENVIRONMENT FOR THE PROPOSED WIND ENERGY FACILITIES ON MULTIPLE FARM PORTIONS NEAR BEAUFORT WEST, BEAUFORT WEST LOCAL MUNICIPALITY, CENTRAL KAROO DISTRICT MUNICIPALITY, WESTERN CAPE PROVINCE.

Sharples Environmental Services cc (hereafter referred to as SES) has been appointed by Mulilo Renewable Project Developments (hereafter referred to as Mulilo) to oversee the environmental authorisation processes, in terms of the National Environmental Management Act, 1998 (Act No. 107 of 1998) and the Environmental Impact Assessment Regulations of 2014, as amended (GNR 326 of 2017; GNR 517 of 2021), for three proposed wind energy facilities and associated infrastructure on multiple farm portions along the R381, near Beaufort West, Beaufort West Local Municipality, Central Karoo District Municipality, Western Cape.

Kindly find the Background Information Documents, in both Afrikaans and English, attached for your consideration.

You have been identified as an Interested & Affected Party (I&AP), providing you with the opportunity to review and comment on the reporting to be undertaken for the projects once made available. **Should you no longer wish to be registered as an I&AP for this project**, indicating that you no longer wish to be included in future communications regarding this process, **please notify this office in writing**.

If you are receiving this mail, and you are the landowner/landlord of the property, you are requested to notify ALL occupiers on your property of the details of this mail and public participation period. Alternatively, you may request that the EAP undertake this notification on your behalf, by supplying the EAP with the occupiers' contact details. If you are the occupier, you are requested to notify the landowner/landlord of the details of this mail and public participation period. Alternatively, you may request that the EAP undertake this notification on your behalf, by supplying the EAP with the landowner/landlord contact details.

Please Note: Choosing to be registered as an I&AP or by submitting a comment, you consent to the lawful processing of your personal information in relation to the intended purposes, as described by the Protection of Personal Information Act, 2013 (Act no. 4 of 2013). Your personal information will be utilized for all processes relevant to this specific project, in compliance with the POPI Act, 2013. You also provide consent to having your contact details being made available, and to be reflected in our regulated reports.

Geagte Kommentaar-owerhede, Belanghebbende en vooraf geïdentifiseerde Belanghebbende en Geaffekteerde Party,

VOORAANSOEK PUBLIEKE DEELNAME: KENNISGEWING VAN DIE VOORNEME OM VEELVOUDIGE AANSOEKE OM OMGEWINGSMAGTIGING (IN DIE VORM VAN 'N AGTERGRONDINLIGTING DOKUMENT) BY DIE NASIONALE DEPARTEMENT VAN BOSBOU, VISSERYE EN VOORGESTELDE ENERGIE TE DIEN IN DIE INDIENING VAN DIE

NASIONALE DEPARTEMENT VAN BOSBO, VISSERYE EN VOORGESTELDE ENERGIE BEAUFORT-WES , BEAUFORT-WES PLAASLIKE MUNISIPALITEIT, SENTRALE KAROO DISTRIK MUNISIPALITEIT, WES-KAAP PROVINSIE.

Sharples Environmental Services cc (hierna verwys as SES) is deur Mulilo Renewable Project Developments (hierna verwys as Mulilo) aangestel om toesig te hou oor die omgewingsmagtigingsprosesse, in terme van die Nasionale Omgewingsbestuurswet, 1998 (Wet No. 107 van 1998) en die Omgewings Assesseringregulasies van 2014, soos aangepas (GNR 326 van 2017; GNR 517 van 2021), vir drie voorgestelde windenergiefasiliteite en gepaardgaande infrastruktuur op verskeie plaasgedeeltes langs die R381, naby Beaufort-Wes, Beaufort-Wes Plaaslike Munisipaliteit, Sentraal Karoo Distriksmunisipaliteit, Wes-Kaap.

Sien asseblief die agtergrondinligtingsdokumente, in beide Afrikaans en Engels, aangeheg vir u oorweging.

U is geïdentifiseer as 'n Belangstellende en Geaffekteerde Party (B&GP), wat u die geleentheid bied om die verslagdoening wat onderneem moet word vir die projekte te hersien en kommentaar te lewer sodra dit beskikbaar gestel word. **Indien u nie meer as 'n B&GP vir hierdie projek geregistreer wil wees nie**, wat aandui dat u nie meer by toekomstige kommunikasie rakende hierdie proses ingesluit wil word nie, **stel asseblief hierdie kantoor skriftelik in kennis.**

Indien u hierdie pos ontvang, en u is die grondeienaar/verhuurder van die eiendom, word u versoek om ALLE okkupeerders op u eiendom in kennis te stel van die besonderhede van hierdie pos en publieke deelname tydperk. Alternatiewelik kan u versoek dat die Omgewingassesseringspraktisyn (EAP) hierdie kennisgewing namens u onderneem deur die WHP van die okkupeerders se kontakbesonderhede te verskaf. Indien u die okkupeerder is, word u versoek om die grondeienaar/verhuurder in kennis te stel van die besonderhede van hierdie pos- en openbare deelname tydperk. Alternatiewelik kan u versoek dat die EAP hierdie kennisgewing namens jou onderneem deur die EAP van die grondeienaar/verhuurder se kontakbesonderhede te verskaf.

Neem asseblief kennis: Deur te u kies om as 'n B&GP geregistreer te word of deur 'n opmerking in te dien, stem u in tot die wettige verwerking van u persoonlike inligting met betrekking tot die beoogde doeleindes, soos beskryf deur die Wet op die Beskerming van Persoonlike Inligting, 2013 (Wet no. 4 van 2013). U persoonlike inligting sal gebruik word vir alle prosesse relevant tot hierdie spesifieke projek, in ooreenstemming met die POPI Wet, 2013. U gee ook toestemming dat u kontakbesonderhede beskikbaar gestel word, en om in ons gereguleerde verslae weerspieël te word.

Thank you / Baie dankie.

Kind regards,

Madeleine Knoetze

Senior Environmental Assessment Practitioner
(EAPASA Reg: 2021/3230)

TEL: (021) 554 5195

EMAIL: madeleine@sesc.net

Unit 1 A2 | The Avenues | Parklands | Cape Town
PO Box 443 | Milnerton | 7435

WEB: www.sesc.net



The image shows a banner for SES Environmental Services. On the left is the company logo, which consists of the letters 'SES' in a stylized font, with 'Sharples' and 'Est 1998' written below it, and 'Environmental Services' in a smaller font at the bottom. To the right of the logo is a list of services: ENVIRONMENTAL IMPACT ASSESSMENTS, ENVIRONMENTAL AUDITING AND MONITORING, ENVIRONMENTAL MANAGEMENT PLANS, AQUATIC ASSESSMENT, WASTE AND WATER LICENSES, PROJECT MANAGEMENT, and REHABILITATION AND CLOSURE PLANS. On the far right of the banner is a circular seal that says 'PROFESSIONAL SERVICE since 1998'. The banner also features several small images: a beach with waves, a tree branch, two colorful parrots, solar panels, and a landscape with a tree.

madeleine@sesc.net

From: madeleine@sesc.net
Sent: Tuesday, 20 February 2024 09:49
To: [REDACTED]
Cc: 'Christo Stroebel'; 'Johan Fourie'; 'Vernon van Niekerk'; 'Lizell Stroh'; Betsy Ditcham
Subject: RE: Karoo WEF: Pre-Application Public Participation: Background Information Documents for the proposed wind energy facilities on multiple farm portions near Beaufort West, Beaufort West Local Municipality.
Attachments: KarooWEF_BID_Mulilo_English_19 February 2024.pdf; KarooWEF_BID_Mulilo_Afrikaans_19 February 2024.pdf

Goeie more Dr. Heiberg,

Baie dankie vir u epos en dat u ontvangs daarvan bevestig het.

Ons teken AIFA (Mr. Stroebel, Mr. Fourie en Mr. van Niekerk) aan as Belanghebbende partye, en bevestig hiermee dat hulle alle inligting sal ontvang rakend toe projek. Ek het die agtergrondsdokumente aangeheg ter inligtingsonthalwe vir die benoemde partye.

Neem asseblief kennis dat Me. Stroh reeds op ons databasis as Belanghebbende party geloods is.

Wanneer verdere inligting verskaf word aanrakend die projekte, sal dit deurgevoer word aan alle individue wat in die epos ingeskakel was.

Indien u op die stadium van die projek verdere navrae het, moet asseblief nie huiwer om ons te kontak nie.

Vriendelike groete,

Madeleine Knoetze
Senior Environmental Assessment Practitioner
(EAPASA Reg: 2021/3230)
TEL: (021) 554 5195
EMAIL: madeleine@sesc.net
Unit 1 A2 | The Avenues | Parklands | Cape Town
PO Box 443 | Milnerton | 7435
WEB: www.sesc.net

SES Environmental Services
EST. 1998
SHARPLES

ENVIRONMENTAL IMPACT ASSESSMENTS
ENVIRONMENTAL AUDITING AND MONITORING
ENVIRONMENTAL MANAGEMENT PLANS
AQUATIC ASSESSMENT
WASTE AND WATER LICENSES
PROJECT MANAGEMENT
REHABILITATION AND CLOSURE PLANS

PROFESSIONAL SERVICE since 1998

From: bambie@heibergestates.com <bambie@heibergestates.com>
Sent: Monday, February 19, 2024 5:45 PM
To: madeleine@sesc.net
Cc: 'Christo Stroebel' [REDACTED]; 'Johan Fourie' [REDACTED]; 'Vernon van Niekerk' [REDACTED]; 'Lizell Stroh' [REDACTED]
Subject: RE: Karoo WEF: Pre-Application Public Participation: Background Information Documents for the proposed wind energy facilities on multiple farm portions near Beaufort West, Beaufort West Local Municipality.

Beste Mev Knoetze

Ek neem kennis van u skrywe hieronder aangeheg. Maak asb SEKER dat AIFA, die Operateurs van die Karoo Gateway Lughawe, ook in alles geken word waar hulle lugruim opleiding en draaisirkels baie naby aan hierdie beoogde ontwikkeling kan wees en die windmaste groot sekuriteitsrisikos sou kon inhou.

Die CEO Mnr Christo Stroebel en ander Senior Bestuurders word hiermee in ge-CC. Let asb daarop dat AIFA internasionale vlieëniers van hier af oplei en dat julle beoogde windplaas ontwikkelinge 'n reuse risiko kan veroorsaak.

Ek gaan ook vra dat julle sonder vertraging aan almal hierbo betrokke, asook Lizell Stroh van CAA alle korrespondensie stuur ten einde seker te maak dat aan alle regulasies aangaande lugverkeer voldoen word en daar GEEN risikos van enige aard vir enige bedrywighede verwant aan die Karoo Gateway Lughawe, sal wees nie.

Erken asb ontvangs van hierdie skrywe asook dat julle AIFA en CAA onder alle omstandighede op hoogte van sake sal hou.

Vriendelike groete
Dr Bambi Heiberg



From: madeleine@sesc.net <madeleine@sesc.net>

Sent: Monday, February 19, 2024 5:05 PM

Cc: Betsy Ditcham [REDACTED]

Subject: Karoo WEF: Pre-Application Public Participation: Background Information Documents for the proposed wind energy facilities on multiple farm portions near Beaufort West, Beaufort West Local Municipality.

Dear Commenting Authorities, Stakeholder, and pre-identified Interested & Affected Party,

PRE-APPLICATION PUBLIC PARTICIPATION: NOTIFICATION OF THE INTENT TO SUBMIT MULTIPLE APPLICATIONS FOR ENVIRONMENTAL AUTHORISATION (IN THE FORM OF A BACKGROUND INFORMATION DOCUMENT) TO THE NATIONAL DEPARTMENT OF FORESTRY, FISHERIES AND ENVIRONMENT FOR THE PROPOSED WIND ENERGY FACILITIES ON MULTIPLE FARM PORTIONS NEAR BEAUFORT WEST, BEAUFORT WEST LOCAL MUNICIPALITY, CENTRAL KAROO DISTRICT MUNICIPALITY, WESTERN CAPE PROVINCE.

Sharples Environmental Services cc (hereafter referred to as SES) has been appointed by Mulilo Renewable Project Developments (hereafter referred to as Mulilo) to oversee the environmental authorisation processes, in terms of the National Environmental Management Act, 1998 (Act No. 107 of 1998) and the Environmental Impact Assessment Regulations of 2014, as amended (GNR 326 of 2017; GNR 517 of 2021), for three proposed wind energy facilities and associated infrastructure on multiple farm portions along the R381, near Beaufort West, Beaufort West Local Municipality, Central Karoo District Municipality, Western Cape.

Kindly find the Background Information Documents, in both Afrikaans and English, attached for your consideration.

You have been identified as an Interested & Affected Party (I&AP), providing you with the opportunity to review and comment on the reporting to be undertaken for the projects once made available. **Should you no longer wish to be registered as an I&AP for this project**, indicating that you no longer wish to be included in future communications regarding this process, **please notify this office in writing**.

If you are receiving this mail, and you are the landowner/landlord of the property, you are requested to notify ALL occupiers on your property of the details of this mail and public participation period. Alternatively, you may request that the EAP undertake this notification on your behalf, by supplying the EAP with the occupiers' contact details. If you are the occupier, you are requested to notify the landowner/landlord of the details of this mail and public participation period. Alternatively, you may request that the EAP undertake this notification on your behalf, by supplying the EAP with the landowner/landlord contact details.

Please Note: Choosing to be registered as an I&AP or by submitting a comment, you consent to the lawful processing of your personal information in relation to the intended purposes, as described by the Protection of Personal Information Act, 2013 (Act no. 4 of 2013). Your personal information will be utilized for all processes relevant to this specific project, in compliance with the POPI Act, 2013. You also provide consent to having your contact details being made available, and to be reflected in our regulated reports.

Geagte Kommentaar-owerhede, Belanghebbende en vooraf geïdentifiseerde Belanghebbende en Geaffekteerde Party,

VOORAANSOEK PUBLIEKE DEELNAME: KENNISGEWING VAN DIE VOORNEME OM VEELVOUDIGE AANSOEKE OM OMGEWINGSMAGTIGING (IN DIE VORM VAN 'N AGTERGRONDINLIGTING DOKUMENT) BY DIE NASIONALE DEPARTEMENT VAN BOSBOU, VISSERYE EN VOORGESTELDE ENERGIE TE DIEN IN DIE INDIENING VAN DIE NASIONALE DEPARTEMENT VAN BOSBO, VISSERYE EN VOORGESTELDE ENERGIE BEAUFORT-WES, BEAUFORT-WES PLAASLIKE MUNISIPALITEIT, SENTRALE KAROO DISTRIK MUNISIPALITEIT, WES-KAAP PROVINSIE.

Sharples Environmental Services cc (hierna verwys as SES) is deur Mulilo Renewable Project Developments (hierna verwys as Mulilo) aangestel om toesig te hou oor die omgewingsmagtigingsprosesse, in terme van die Nasionale Omgewingsbestuurswet, 1998 (Wet No. 107 van 1998) en die Omgewings Asseseringregulasies van 2014, soos aangepas (GNR 326 van 2017; GNR 517 van 2021), vir drie voorgestelde windenergiefasiliteite en gepaardgaande infrastruktuur op verskeie plaasgedeeltes langs die R381, naby Beaufort-Wes, Beaufort-Wes Plaaslike Munisipaliteit, Sentraal Karoo Distriksmunisipaliteit, Wes-Kaap.

Sien asseblief die agtergrondinligtingsdokumente, in beide Afrikaans en Engels, aangeheg vir u oorweging.

U is geïdentifiseer as 'n Belangstellende en Geaffekteerde Party (B&GP), wat u die geleentheid bied om die verslagdoening wat onderneem moet word vir die projekte te hersien en kommentaar te lewer sodra dit beskikbaar gestel word. **Indien u nie meer as 'n B&GP vir hierdie projek geregistreer wil wees nie**, wat aandui dat u nie meer by toekomstige kommunikasie rakende hierdie proses ingesluit wil word nie, **stel asseblief hierdie kantoor skriftelik in kennis**.

Indien u hierdie pos ontvang, en u is die grondeienaar/verhuurder van die eiendom, word u versoek om ALLE okkupeerders op u eiendom in kennis te stel van die besonderhede van hierdie pos en publieke deelname tydperk. Alternatiewelik kan u versoek dat die Omgewingassesseringspraktisyn (EAP) hierdie kennisgewing namens u onderneem deur die WHP van die okkupeerders se kontakbesonderhede te verskaf. Indien u die okkupeerder is, word u versoek om die grondeienaar/verhuurder in kennis te stel van die besonderhede van hierdie pos- en openbare deelname tydperk. Alternatiewelik kan u versoek dat die EAP hierdie kennisgewing namens jou onderneem deur die EAP van die grondeienaar/verhuurder se kontakbesonderhede te verskaf.

Neem asseblief kennis: Deur te u kies om as 'n B&GP geregistreer te word of deur 'n opmerking in te dien, stem u in tot die wettige verwerking van u persoonlike inligting met betrekking tot die beoogde doeleindes, soos beskryf deur die Wet op die Beskerming van Persoonlike Inligting, 2013 (Wet no. 4 van 2013). U persoonlike inligting sal gebruik word vir alle prosesse relevant tot hierdie spesifieke projek, in ooreenstemming met die POPI Wet, 2013. U gee ook toestemming dat u kontakbesonderhede beskikbaar gestel word, en om in ons geregleerde verslae weerspieël te word.

Thank you / Baie dankie.

Kind regards,

Madeleine Knoetze

Senior Environmental Assessment Practitioner
(EAPASA Reg: 2021/3230)

TEL: (021) 554 5195

EMAIL: madeleine@sesc.net

Unit 1 A2 | The Avenues | Parklands | Cape Town
PO Box 443 | Milnerton | 7435

WEB: www.sesc.net



ENVIRONMENTAL IMPACT ASSESSMENTS
ENVIRONMENTAL AUDITING AND MONITORING
ENVIRONMENTAL MANAGEMENT PLANS
AQUATIC ASSESSMENT
WASTE AND WATER LICENSES
PROJECT MANAGEMENT
REHABILITATION AND CLOSURE PLANS



From: madeleine@sesc.net
Sent: Tuesday, 20 February 2024 16:40
To: [REDACTED]
Cc: Betsy Ditcham; [REDACTED]
Subject: RE: Karoo WEF: Pre-Application Public Participation: Background Information Documents for the proposed wind energy facilities on multiple farm portions near Beaufort West, Beaufort West Local Municipality.
Attachments: KarooWEF_BID_Mulilo_Afrikaans_19 February 2024.pdf;
KarooWEF_BID_Mulilo_English_19 February 2024.pdf

Tracking:	Recipient	Read
	[REDACTED]	
	KAROO GAME	Read: 2024/02/20 17:23

Dear Chairman/Secretary of the Nuvelde Farmer's Society,

PRE-APPLICATION PUBLIC PARTICIPATION: NOTIFICATION OF THE INTENT TO SUBMIT MULTIPLE APPLICATIONS FOR ENVIRONMENTAL AUTHORISATION (IN THE FORM OF A BACKGROUND INFORMATION DOCUMENT) TO THE NATIONAL DEPARTMENT OF FORESTRY, FISHERIES AND ENVIRONMENT FOR THE PROPOSED WIND ENERGY FACILITIES ON MULTIPLE FARM PORTIONS NEAR BEAUFORT WEST, BEAUFORT WEST LOCAL MUNICIPALITY, CENTRAL KAROO DISTRICT MUNICIPALITY, WESTERN CAPE PROVINCE.

Sharples Environmental Services cc (hereafter referred to as SES) has been appointed by Mulilo Renewable Project Developments (hereafter referred to as Mulilo) to oversee the environmental authorisation processes, in terms of the National Environmental Management Act, 1998 (Act No. 107 of 1998) and the Environmental Impact Assessment Regulations of 2014, as amended (GNR 326 of 2017; GNR 517 of 2021), for three proposed wind energy facilities and associated infrastructure on multiple farm portions along the R381, near Beaufort West, Beaufort West Local Municipality, Central Karoo District Municipality, Western Cape.

As the project is located on a number of properties within the northern reaches of the Beaufort West farming community, Nuvelde Farmer's Society has been identified as an Interested & Affected Party for the project. **Kindly find the Background Information Documents, in both Afrikaans and English, attached for your consideration and further distribution to your members.**

You have been identified as an Interested & Affected Party (I&AP), providing you with the opportunity to review and comment on the reporting to be undertaken for the projects once made available. **Should you no longer wish to be registered as an I&AP for this project**, indicating that you no longer wish to be included in future communications regarding this process, **please notify this office in writing.**

If you are receiving this mail, and you are the landowner/landlord of the property, you are requested to notify ALL occupiers on your property of the details of this mail and public participation period. Alternatively, you may request that the EAP undertake this notification on your behalf, by supplying the EAP with the occupiers' contact details. If you are the occupier, you are requested to notify the landowner/landlord of the details of this mail and public participation period. Alternatively, you may request that the EAP undertake this notification on your behalf, by supplying the EAP with the landowner/landlord contact details.

Please Note: Choosing to be registered as an I&AP or by submitting a comment, you consent to the lawful processing of your personal information in relation to the intended purposes, as described by the Protection of Personal

Information Act, 2013 (Act no. 4 of 2013). Your personal information will be utilized for all processes relevant to this specific project, in compliance with the POPI Act, 2013. You also provide consent to having your contact details being made available, and to be reflected in our regulated reports.

Geagte Voorsitter/Sekretaris van die Nuvelde Boerevereniging,

VOORAANSOEK PUBLIEKE DEELNAME: KENNISGEWING VAN DIE VOORNEME OM VEELVOUDIGE AANSOEKE OM OMGEWINGSMAGTIGING (IN DIE VORM VAN 'N AGTERGRONDINLIGTING DOKUMENT) BY DIE NASIONALE DEPARTEMENT VAN BOSBOU, VISSERYE EN VOORGESTELDE ENERGIE TE DIEN IN DIE INDIENING VAN DIE NASIONALE DEPARTEMENT VAN BOSBO, VISSERYE EN VOORGESTELDE ENERGIE BEAUFORT-WES, BEAUFORT-WES PLAASLIKE MUNISIPALITEIT, SENTRALE KAROO DISTRIK MUNISIPALITEIT, WES-KAAP PROVINSIE.

Sharples Environmental Services cc (hierna verwys as SES) is deur Mulilo Renewable Project Developments (hierna verwys as Mulilo) aangestel om toesig te hou oor die omgewingsmagtigingsprosesse, in terme van die Nasionale Omgewingsbestuurswet, 1998 (Wet No. 107 van 1998) en die Omgewings Assesseringregulasies van 2014, soos aangepas (GNR 326 van 2017; GNR 517 van 2021), vir drie voorgestelde windenergiefasiliteite en gepaardgaande infrastruktuur op verskeie plaasgedeeltes langs die R381, naby Beaufort-Wes, Beaufort-Wes Plaaslike Munisipaliteit, Sentraal Karoo Distriksmunisipaliteit, Wes-Kaap.

Aangesien die projek op 'n aantal eiendomme binne die noordelike uithoeke van die Beaufort-Wes boeregemeenskap geleë is, is Nuvelde Boerevereniging geïdentifiseer as 'n Belangstellende & Geëffekteerde Party vir die projek. **Sien asseblief die Agtergrondinligtingsdokumente, in beide Afrikaans en Engels, aangeheg vir u oorweging en verdere verspreiding aan u lede.**

U is geïdentifiseer as 'n Belangstellende en Geëffekteerde Party (B&GP), wat u die geleentheid bied om die verslagdoening wat onderneem moet word vir die projekte te hersien en kommentaar te lewer sodra dit beskikbaar gestel word. **Indien u nie meer as 'n B&GP vir hierdie projek geregistreer wil wees nie**, wat aandui dat u nie meer by toekomstige kommunikasie rakende hierdie proses ingesluit wil word nie, **stel asseblief hierdie kantoor skriftelik in kennis.**

Indien u hierdie pos ontvang, en u is die grondeienaar/verhuurder van die eiendom, word u versoek om ALLE okkupeerders op u eiendom in kennis te stel van die besonderhede van hierdie pos en publieke deelname tydperk. Alternatiewelik kan u versoek dat die Omgewingassesseringpraktisyn (EAP) hierdie kennisgewing namens u onderneem deur die WHP van die okkupeerders se kontakbesonderhede te verskaf. Indien u die okkupeerder is, word u versoek om die grondeienaar/verhuurder in kennis te stel van die besonderhede van hierdie pos- en openbare deelname tydperk. Alternatiewelik kan u versoek dat die EAP hierdie kennisgewing namens jou onderneem deur die EAP van die grondeienaar/verhuurder se kontakbesonderhede te verskaf.

Neem asseblief kennis: Deur te u kies om as 'n B&GP geregistreer te word of deur 'n opmerking in te dien, stem u in tot die wettige verwerking van u persoonlike inligting met betrekking tot die beoogde doeleindes, soos beskryf deur die Wet op die Beskerming van Persoonlike Inligting, 2013 (Wet no. 4 van 2013). U persoonlike inligting sal gebruik word vir alle prosesse relevant tot hierdie spesifieke projek, in ooreenstemming met die POPI Wet, 2013. U gee ook toestemming dat u kontakbesonderhede beskikbaar gestel word, en om in ons geregleerde verslae weerspieël te word.

Thank you / Baie dankie.

Kind regards,

Madeleine Knoetze

Senior Environmental Assessment Practitioner
(EAPASA Reg: 2021/3230)

TEL: (021) 554 5195

EMAIL: madeleine@sesc.net

Unit 1 A2 | The Avenues | Parklands | Cape Town
PO Box 443 | Milnerton | 7435

WEB: www.sesc.net



ENVIRONMENTAL IMPACT ASSESSMENTS
ENVIRONMENTAL AUDITING AND MONITORING
ENVIRONMENTAL MANAGEMENT PLANS
AQUATIC ASSESSMENT
WASTE AND WATER LICENSES
PROJECT MANAGEMENT
REHABILITATION AND CLOSURE PLANS



From: madeleine@sesc.net
Sent: Tuesday, 20 February 2024 16:46
To: [REDACTED]
Cc: 'Betsy Ditcham'; 'Bonnie Schumann'
Subject: RE: Karoo WEF: Pre-Application Public Participation: Background Information Documents for the proposed wind energy facilities on multiple farm portions near Beaufort West, Beaufort West Local Municipality.
Attachments: KarooWEF_BID_Mulilo_Afrikaans_19 February 2024.pdf;
KarooWEF_BID_Mulilo_English_19 February 2024.pdf

Good afternoon,

I trust you are doing well.

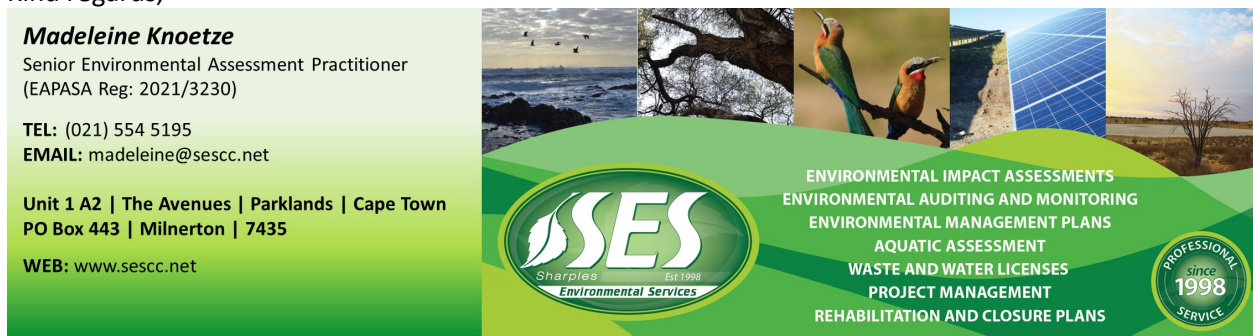
Please note that you have been identified as an Interested & Affected Party (I&AP) Ms. Bonnie Schumann for the abovementioned project.

Sharples Environmental Services cc (hereafter referred to as SES) has been appointed by Mulilo Renewable Project Developments (hereafter referred to as Mulilo) to oversee the environmental authorisation processes, in terms of the National Environmental Management Act, 1998 (Act No. 107 of 1998) and the Environmental Impact Assessment Regulations of 2014, as amended (GNR 326 of 2017; GNR 517 of 2021), for three proposed wind energy facilities and associated infrastructure on multiple farm portions along the R381, near Beaufort West, Beaufort West Local Municipality, Central Karoo District Municipality, Western Cape.

Kindly find the Background Information Documents, in both Afrikaans and English, attached for your consideration.

Please note that once the Basic Assessment Reports in terms of the EIA Regulations of 2014, as amended, is distributed for public review and commenting purposes, you will be notified of the availability of the reports and the shapefiles will be sent through to the EWT for consideration.

Kind regards,



Madeleine Knoetze
Senior Environmental Assessment Practitioner
(EAPASA Reg: 2021/3230)

TEL: (021) 554 5195
EMAIL: madeleine@sesc.net

Unit 1 A2 | The Avenues | Parklands | Cape Town
PO Box 443 | Milnerton | 7435
WEB: www.sesc.net

ENVIRONMENTAL IMPACT ASSESSMENTS
ENVIRONMENTAL AUDITING AND MONITORING
ENVIRONMENTAL MANAGEMENT PLANS
AQUATIC ASSESSMENT
WASTE AND WATER LICENSES
PROJECT MANAGEMENT
REHABILITATION AND CLOSURE PLANS

PROFESSIONAL SERVICE since 1998

From: Bonnie Schumann <[REDACTED]>
Sent: Tuesday, February 20, 2024 11:33 AM
To: madeleine@sesc.net
Cc: 'Betsy Ditcham' <[REDACTED]>
Subject: RE: Karoo WEF: Pre-Application Public Participation: Background Information Documents for the proposed wind energy facilities on multiple farm portions near Beaufort West, Beaufort West Local Municipality.

Hi Madeleine

Many thanks for your response.

Please include on your mailing list the following EWT staff, as the programmes will comment on different spp and aspects of the proposed development.

Dr Gareth Tate: Programme Manager Birds of Prey Programme: [REDACTED]
Zanne Brink: Programme Manager Drylands Conservation Programme [REDACTED]
Oscar Mohale: Programme Manager Wildlife and Energy [REDACTED]

Many thanks.

Kind Regards

Bonnie Schumann

From: madeleine@sescc.net <madeleine@sescc.net>
Sent: Tuesday, February 20, 2024 9:26 AM
To: Bonnie Schumann <[REDACTED]>
Cc: 'Betsy Ditcham' <[REDACTED]>
Subject: RE: Karoo WEF: Pre-Application Public Participation: Background Information Documents for the proposed wind energy facilities on multiple farm portions near Beaufort West, Beaufort West Local Municipality.

Good morning Bonnie,

I hope you are doing well.

Thank you for confirming the Endangered Wildlife Trust's interest in the project.

Please note we are in the pre-application phase of the proposed developments. Once the information becomes available, the project reports and associated datafiles (layouts and site sensitivity shapefiles) will be made available to you.

Kind regards,

Madeleine Knoetze
Senior Environmental Assessment Practitioner
(EAPASA Reg: 2021/3230)
TEL: (021) 554 5195
EMAIL: madeleine@sescc.net
Unit 1 A2 | The Avenues | Parklands | Cape Town
PO Box 443 | Milnerton | 7435
WEB: www.sescc.net

SES
Sharples Est. 1998
Environmental Services

ENVIRONMENTAL IMPACT ASSESSMENTS
ENVIRONMENTAL AUDITING AND MONITORING
ENVIRONMENTAL MANAGEMENT PLANS
AQUATIC ASSESSMENT
WASTE AND WATER LICENSES
PROJECT MANAGEMENT
REHABILITATION AND CLOSURE PLANS

PROFESSIONAL SERVICE since 1998

From: Bonnie Schumann <[REDACTED]>
Sent: Tuesday, February 20, 2024 8:26 AM
To: madeleine@sescc.net
Cc: Betsy Ditcham <[REDACTED]>
Subject: RE: Karoo WEF: Pre-Application Public Participation: Background Information Documents for the proposed wind energy facilities on multiple farm portions near Beaufort West, Beaufort West Local Municipality.

Hi Madeleine

Please can you send me the shapefiles for the proposed development.

The Endangered Wildlife Trust has an interest as a number of species of conservation concern are in this immediate area.

Many thanks.



Bonnie Schumann
Nama Karoo Coordinator
Drylands Conservation Programme



[DONATE](#) [WEBSITE](#) [SUBSCRIBE](#)

FOLLOW US

Broad-Based Black Economic Empowerment – BBBEE Level 4 Certificate & 95% Civil Society Organisation PBO number: 930 001 777 NPO number: 015-502 NPO IT number: IT 6247

Physical Address: 27 and 28 Austin Road, Glen Austin AH, Midrand, 1685, Gauteng, South Africa
Postal Address: Postnet Suite # 027, Postnet Suite 002, Private Bag X08, Wierda Park 0149, Gauteng, South Africa

From: madeleine@sesc.net <madeleine@sesc.net>

Sent: Monday, February 19, 2024 5:05 PM

Cc: Betsy Ditcham <>

Subject: Karoo WEF: Pre-Application Public Participation: Background Information Documents for the proposed wind energy facilities on multiple farm portions near Beaufort West, Beaufort West Local Municipality.

Your attachments have been security checked by Mimecast Attachment Protection. Files where no threat or malware was detected are attached.

Dear Commenting Authorities, Stakeholder, and pre-identified Interested & Affected Party,

PRE-APPLICATION PUBLIC PARTICIPATION: NOTIFICATION OF THE INTENT TO SUBMIT MULTIPLE APPLICATIONS FOR ENVIRONMENTAL AUTHORISATION (IN THE FORM OF A BACKGROUND INFORMATION DOCUMENT) TO THE NATIONAL DEPARTMENT OF FORESTRY, FISHERIES AND ENVIRONMENT FOR THE PROPOSED WIND ENERGY FACILITIES ON MULTIPLE FARM PORTIONS NEAR BEAUFORT WEST, BEAUFORT WEST LOCAL MUNICIPALITY, CENTRAL KAROO DISTRICT MUNICIPALITY, WESTERN CAPE PROVINCE.

Sharples Environmental Services cc (hereafter referred to as SES) has been appointed by Mulilo Renewable Project Developments (hereafter referred to as Mulilo) to oversee the environmental authorisation processes, in terms of the National Environmental Management Act, 1998 (Act No. 107 of 1998) and the Environmental Impact Assessment Regulations of 2014, as amended (GNR 326 of 2017; GNR 517 of 2021), for three proposed wind energy facilities and associated infrastructure on multiple farm portions along the R381, near Beaufort West, Beaufort West Local Municipality, Central Karoo District Municipality, Western Cape.

Kindly find the Background Information Documents, in both Afrikaans and English, attached for your consideration.

You have been identified as an Interested & Affected Party (I&AP), providing you with the opportunity to review and comment on the reporting to be undertaken for the projects once made available. **Should you no longer wish to be registered as an I&AP for this project**, indicating that you no longer wish to be included in future communications regarding this process, **please notify this office in writing**.

If you are receiving this mail, and you are the landowner/landlord of the property, you are requested to notify ALL occupiers on your property of the details of this mail and public participation period. Alternatively, you may request that the EAP undertake this notification on your behalf, by supplying the EAP with the occupiers' contact details. If you are the occupier, you are requested to notify the landowner/landlord of the details of this mail and public participation period. Alternatively, you may request that the EAP undertake this notification on your behalf, by supplying the EAP with the landowner/landlord contact details.

Please Note: Choosing to be registered as an I&AP or by submitting a comment, you consent to the lawful processing of your personal information in relation to the intended purposes, as described by the Protection of Personal Information Act, 2013 (Act no. 4 of 2013). Your personal information will be utilized for all processes relevant to this specific project, in compliance with the POPI Act, 2013. You also provide consent to having your contact details being made available, and to be reflected in our regulated reports.

Geagte Kommentaar-owerhede, Belanghebbende en vooraf geïdentifiseerde Belanghebbende en Geaffekteerde Party,

VOORAANSOEK PUBLIEKE DEELNAME: KENNISGEWING VAN DIE VOORNEME OM VEELVOUDIGE AANSOEKE OM OMGEWINGSMAGTIGING (IN DIE VORM VAN 'N AGTERGRONDINLIGTING DOKUMENT) BY DIE NASIONALE DEPARTEMENT VAN BOSBOU, VISSERYE EN VOORGESTELDE ENERGIE TE DIEN IN DIE INDIENING VAN DIE NASIONALE DEPARTEMENT VAN BOSBO, VISSERYE EN VOORGESTELDE ENERGIE BEAUFORT-WES , BEAUFORT-WES PLAASLIKE MUNISIPALITEIT, SENTRALE KAROO DISTRIK MUNISIPALITEIT, WES-KAAP PROVINSIE.

Sharples Environmental Services cc (hierna verwys as SES) is deur Mulilo Renewable Project Developments (hierna verwys as Mulilo) aangestel om toesig te hou oor die omgewingsmagtigingsprosesse, in terme van die Nasionale Omgewingsbestuurswet, 1998 (Wet No. 107 van 1998) en die Omgewings Asseseringregulasies van 2014, soos aangepas (GNR 326 van 2017; GNR 517 van 2021), vir drie voorgestelde windenergiefasiliteite en gepaardgaande infrastruktuur op verskeie plaasgedeeltes langs die R381, naby Beaufort-Wes, Beaufort-Wes Plaaslike Munisipaliteit, Sentraal Karoo Distriksmunisipaliteit, Wes-Kaap.

Sien asseblief die agtergrondinligtingsdokumente, in beide Afrikaans en Engels, aangeheg vir u oorweging.

U is geïdentifiseer as 'n Belangstellende en Geaffekteerde Party (B&GP), wat u die geleentheid bied om die verslagdoening wat onderneem moet word vir die projekte te hersien en kommentaar te lewer sodra dit beskikbaar gestel word. **Indien u nie meer as 'n B&GP vir hierdie projek geregistreer wil wees nie**, wat aandui dat u nie meer by toekomstige kommunikasie rakende hierdie proses ingesluit wil word nie, **stel asseblief hierdie kantoor skriftelik in kennis.**

Indien u hierdie pos ontvang, en u is die grondeienaar/verhuurder van die eiendom, word u versoek om ALLE okkupeerders op u eiendom in kennis te stel van die besonderhede van hierdie pos en publieke deelname tydperk. Alternatiewelik kan u versoek dat die Omgewingassesseringpraktisyn (EAP) hierdie kennisgewing namens u onderneem deur die WHP van die okkupeerders se kontakbesonderhede te verskaf. Indien u die okkupeerder is, word u versoek om die grondeienaar/verhuurder in kennis te stel van die besonderhede van hierdie pos- en openbare deelname tydperk. Alternatiewelik kan u versoek dat die EAP hierdie kennisgewing namens jou onderneem deur die EAP van die grondeienaar/verhuurder se kontakbesonderhede te verskaf.

Neem asseblief kennis: Deur te u kies om as 'n B&GP geregistreer te word of deur 'n opmerking in te dien, stem u in tot die wettige verwerking van u persoonlike inligting met betrekking tot die beoogde doeleindes, soos beskryf deur die Wet op die Beskerming van Persoonlike Inligting, 2013 (Wet no. 4 van 2013). U persoonlike inligting sal gebruik word vir alle prosesse relevant tot hierdie spesifieke projek, in ooreenstemming met die POPI Wet, 2013. U gee ook toestemming dat u kontakbesonderhede beskikbaar gestel word, en om in ons geregleerde verslae weerspieël te word.

Thank you / Baie dankie.

Kind regards,

Madeleine Knoetze

Senior Environmental Assessment Practitioner
(EAPASA Reg: 2021/3230)

TEL: (021) 554 5195

EMAIL: madeleine@sesc.net

Unit 1 A2 | The Avenues | Parklands | Cape Town
PO Box 443 | Milnerton | 7435

WEB: www.sesc.net



ENVIRONMENTAL IMPACT ASSESSMENTS
ENVIRONMENTAL AUDITING AND MONITORING
ENVIRONMENTAL MANAGEMENT PLANS
AQUATIC ASSESSMENT
WASTE AND WATER LICENSES
PROJECT MANAGEMENT
REHABILITATION AND CLOSURE PLANS



From: madeleine@sesc.net
Sent: Tuesday, 20 February 2024 16:52
To: 'Mxolisi Molefe'
Cc: 'Jeffrey Manuel'; 'Roland Januarie'; Betsy Ditcham
Subject: RE: Register as Interested and Affected Party for the for the proposed wind energy facilities near Beaufort West
Attachments: KarooWEF_BID_Mulilo_Afrikaans_19 February 2024.pdf;
KarooWEF_BID_Mulilo_English_19 February 2024.pdf

Good afternoon Mxolisi,

Thank you for registering on behalf of SANParks as an Interested & Affected Party for the proposed development. Please note that Mr. Manuel and Mr. Januarie has also been registered as Stakeholders for the project.

For your reference, please see the Background Information Document (in Afrikaans and English) attached for your consideration.

Once the Basic Assessment Reports for the proposed developments are distributed for public review as part of the 30-day Public Participation Process, you will be notified.

Should you have any questions or concerns regarding the proposed developments at this stage, please do not hesitate to contact us.

Thank you.

Kind regards,

Madeleine Knoetze
Senior Environmental Assessment Practitioner
(EAPASA Reg: 2021/3230)
TEL: (021) 554 5195
EMAIL: madeleine@sesc.net

Unit 1 A2 | The Avenues | Parklands | Cape Town
PO Box 443 | Milnerton | 7435
WEB: www.sesc.net

SESC
Sharples Environmental Services
EST. 1998

ENVIRONMENTAL IMPACT ASSESSMENTS
ENVIRONMENTAL AUDITING AND MONITORING
ENVIRONMENTAL MANAGEMENT PLANS
AQUATIC ASSESSMENT
WASTE AND WATER LICENSES
PROJECT MANAGEMENT
REHABILITATION AND CLOSURE PLANS

PROFESSIONAL SERVICE since 1998

From: Mxolisi Molefe <[REDACTED]>
Sent: Tuesday, February 20, 2024 1:28 PM
To: madeleine@sesc.net
Cc: Jeffrey Manuel <Jeffrey.Manuel@sanparks.org>; Roland Januarie <Roland.Januarie@sanparks.org>
Subject: Register as Interested and Affected Party for the for the proposed wind energy facilities near Beaufort West

<

Good day

I hope you are in good health.

I am writing to request to be added to the database of interested and affected parties for the proposed wind energy facilities near Beaufort West Central Karoo District Municipality.

By being included in the database, we can comment and can stay updated on any development, news, or any relevant updates regarding this project.

Please add the following:

Jeffery Manuel

[REDACTED]
Rolland Januarie

Email [REDACTED]

Thanks,

Kind Regards,

Mxolisi Molefe

Intern: Planner

Conservation Services

Park Planning and Development

Phone: [REDACTED]

Email: [REDACTED]

Port Elizabeth

"He that plants trees loves others besides himself." — Thomas Fuller



Disclaimer: 1) Confidentiality: This email communication and any attachments sent from mxolisi.molefe@sanparks.org to madeleine@sesc.net on 2024-02-20 13:27:50 are confidential and may contain privileged or copyright information. You may not present this message to another party without consent from the sender. If you are not madeleine@sesc.net please notify mxolisi.molefe@sanparks.org and delete this email and you are notified that disclosing, copying, distributing or taking any action in reliance on the contents of this information is strictly prohibited. 2) Liability: This email is not a binding agreement and does not conclude an agreement without the express confirmation by the sender's superior or relevant authorisation of SANParks. 3) Viruses: SANParks does not certify that this email is free of viruses or defects. 4) Requested: SANParks does not consent to its employees sending un-asked for emails which contravene the law. In the event that you feel this email is such, please notify SANParks in order for the appropriate corrective action to be taken. 5) Advice: Any views or opinions presented in this email are solely those of the author and do not necessarily represent those of SANParks. Any actions taken on the basis of this email are at the reader's own risk. 6) Other: The sender of this email is expressly required not make any defamatory statements. Any such communication is contrary to SANParks policy and outside the scope of the employment of the individual concerned. SANParks will not accept any liability in respect of such communication, and the employee responsible will be personally liable for any damages or other liability arising. Thank you. South African National Parks 643 Leyds Street, Muckleneuk, Pretoria, South Africa

From: madeleine@sesc.net
Sent: Tuesday, 20 February 2024 17:08
To: 'Jaco Nel'
Cc: 'Christo Stroebel'; Betsy Ditcham
Subject: RE: REGISTRATION AS INTERESTED PARTY - MULILO WEF NEAR BEAUFORT WEST
Attachments: KarooWEF_BID_Mulilo_Afrikaans_19 February 2024.pdf;
KarooWEF_BID_Mulilo_English_19 February 2024.pdf

Good afternoon Jaco,

I hope you are doing well.

Thank you for registering as an Interested and Affected Party on behalf of AVIC International Flight Training Academy (Pty) Ltd. - (AIFA) for the proposed wind energy facility development near Beaufort West, we have captured your contact details on our database.

Please see the Background Information Document (in Afrikaans and English) attached for your consideration.

Once the Basic Assessment Reports for the proposed developments are distributed for public review as part of the 30-day Public Participation Process, you will be notified of their availability.

Thank you / Dankie.

Kind regards,

Madeleine Knoetze
Senior Environmental Assessment Practitioner
(EAPASA Reg: 2021/3230)
TEL: (021) 554 5195
EMAIL: madeleine@sesc.net

Unit 1 A2 | The Avenues | Parklands | Cape Town
PO Box 443 | Milnerton | 7435
WEB: www.sesc.net

SESC
Sharples Est 1998
Environmental Services

ENVIRONMENTAL IMPACT ASSESSMENTS
ENVIRONMENTAL AUDITING AND MONITORING
ENVIRONMENTAL MANAGEMENT PLANS
AQUATIC ASSESSMENT
WASTE AND WATER LICENSES
PROJECT MANAGEMENT
REHABILITATION AND CLOSURE PLANS

PROFESSIONAL SERVICE since 1998

From: Jaco Nel [REDACTED]
Sent: Tuesday, February 20, 2024 11:45 AM
To: madeleine@sesc.net
Cc: Christo Stroebel [REDACTED]
Subject: REGISTRATION AS INTERESTED PARTY - MULILO WEF NEAR BEAUFORT WEST

Good day,

AVIC International Flight Training Academy (Pty) Ltd. - (AIFA), herewith would like to register as an interested party for the proposed Mulilo Renewable Project Developments WEF near Beaufort West.

Kind Regards / Vriendelike Groete



JACO NEL
Quality & Safety Manager



+27 (82) 824 1954
Jaco@alfa.co.za
George: +27 (44) 876 9217
Oudtshoorn: +27 (44) 272 5547
Beaufort West: +27 (23) 007 0100
www.facebook.com/AlfASA
www.aifa.co.za

SAFETY - QUALITY - PRODUCTIVITY - EFFICIENCY - CARE

Email messages and any accompanying attachments may contain information that is confidential and is subject to legal privilege. If you are not the intended recipient, do not read, use, disseminate, distribute or copy this message or attachments. If you have received this message in error, please notify the sender immediately, and delete this message. Thank you

 *Save a tree. Don't print this e-mail unless it's really necessary*

From: madeleine@sesc.net
Sent: Tuesday, 27 February 2024 10:03
To: [REDACTED]
Cc: Betsy Ditcham; Schalk Van der Merwe
Subject: Karoo WEF: Pre-Application Public Participation: Background Information Documents for the proposed wind energy facilities on multiple farm portions near Beaufort West, Beaufort West Local Municipality.
Attachments: KarooWEF_BID_Mulilo_English_19 February 2024.pdf;
KarooWEF_BID_Mulilo_Afrikaans_19 February 2024.pdf

Tracking:	Recipient	Read
	[REDACTED]	
		Read: 2024/02/27 15:13

Dear Landowner/Person in Control of the land,

PRE-APPLICATION PUBLIC PARTICIPATION: NOTIFICATION OF THE INTENT TO SUBMIT MULTIPLE APPLICATIONS FOR ENVIRONMENTAL AUTHORISATION (IN THE FORM OF A BACKGROUND INFORMATION DOCUMENT) TO THE NATIONAL DEPARTMENT OF FORESTRY, FISHERIES AND ENVIRONMENT FOR THE PROPOSED WIND ENERGY FACILITIES ON MULTIPLE FARM PORTIONS NEAR BEAUFORT WEST, BEAUFORT WEST LOCAL MUNICIPALITY, CENTRAL KAROO DISTRICT MUNICIPALITY, WESTERN CAPE PROVINCE.

Sharples Environmental Services cc (hereafter referred to as SES) has been appointed by Mulilo Renewable Project Developments (hereafter referred to as Mulilo) to oversee the environmental authorisation processes, in terms of the National Environmental Management Act, 1998 (Act No. 107 of 1998) and the Environmental Impact Assessment Regulations of 2014, as amended (GNR 326 of 2017; GNR 517 of 2021), for three proposed wind energy facilities and associated infrastructure on multiple farm portions along the R381, near Beaufort West, Beaufort West Local Municipality, Central Karoo District Municipality, Western Cape.

As indicated by the Socio-Economic specialist for the proposed developments, Mr. Schalk van der Merwe, during his site visits last week, you have been identified as an adjacent landowner (of the Farm Quaggafontein 82) to the abovementioned project. As per our conversations with Mr. van der Merwe, it was indicated that there are two known locations of Verreaux's Eagle nests located within one of the projects (Phase 2). Will you please provide us with an approximate location of the Eagle nests in order to communicate said locations with the Avifaunal Specialist for the project.

Kindly find the Background Information Documents, in both Afrikaans and English, attached for your consideration.

You have been identified as an Interested & Affected Party (I&AP), providing you with the opportunity to review and comment on the reporting to be undertaken for the projects once made available. **Should you no longer wish to be registered as an I&AP for this project**, indicating that you no longer wish to be included in future communications regarding this process, **please notify this office in writing**.

If you are receiving this mail, and you are the landowner/landlord of the property, you are requested to notify ALL occupiers on your property of the details of this mail and public participation period. Alternatively, you may request that the EAP undertake this notification on your behalf, by supplying the EAP with the occupiers' contact details. If you are the occupier, you are requested to notify the landowner/landlord of the details of this mail and public

participation period. Alternatively, you may request that the EAP undertake this notification on your behalf, by supplying the EAP with the landowner/landlord contact details.

Please Note: Choosing to be registered as an I&AP or by submitting a comment, you consent to the lawful processing of your personal information in relation to the intended purposes, as described by the Protection of Personal Information Act, 2013 (Act no. 4 of 2013). Your personal information will be utilized for all processes relevant to this specific project, in compliance with the POPI Act, 2013. You also provide consent to having your contact details being made available, and to be reflected in our regulated reports.

Geagte Grondeienaar / Persoon in beheer van die grond,

VOORAANSOEK PUBLIEKE DEELNAME: KENNISGEWING VAN DIE VOORNEME OM VEELVOUDIGE AANSOEKE OM OMGEWINGSMAGTIGING (IN DIE VORM VAN 'N AGTERGRONDINLIGTING DOKUMENT) BY DIE NASIONALE DEPARTEMENT VAN BOSBOU, VISSERYE EN VOORGESTELDE ENERGIE TE DIEN IN DIE INDIENING VAN DIE NASIONALE DEPARTEMENT VAN BOSBO, VISSERYE EN VOORGESTELDE ENERGIE BEAUFORT-WES, BEAUFORT-WES PLAASLIKE MUNISIPALITEIT, SENTRALE KAROO DISTRIK MUNISIPALITEIT, WES-KAAP PROVINSIE.

Sharples Environmental Services cc (hierna verwys as SES) is deur Mulilo Renewable Project Developments (hierna verwys as Mulilo) aangestel om toesig te hou oor die omgewingsmagtigingsprosesse, in terme van die Nasionale Omgewingsbestuurswet, 1998 (Wet No. 107 van 1998) en die Omgewings Asseseringregulasies van 2014, soos aangepas (GNR 326 van 2017; GNR 517 van 2021), vir drie voorgestelde windenergiefasiliteite en gepaardgaande infrastruktuur op verskeie plaasgedeeltes langs die R381, naby Beaufort-Wes, Beaufort-Wes Plaaslike Munisipaliteit, Sentraal Karoo Distriksmunisipaliteit, Wes-Kaap.

Soos aangedui deur die sosio-ekonomiese spesialis vir die voorgestelde ontwikkelings, mnr. Schalk van der Merwe, tydens sy terreinbesoeke verlede week, is u geïdentifiseer as 'n aangrensende grondeienaar (van die plaas Quaggafontein 82) tot bogenoemde projek. Volgens ons gesprekke met Mnr. van der Merwe, is daar aangedui dat daar twee bekende liggings van Verreaux Arend neste geleë is binne een van die projekte (Fase 2). Sal u asseblief vir ons 'n benaderde ligging van die Arendneste verskaf om die liggings met die Voël Spesialis vir die projek te kommunikeer.

Sien asseblief die agtergrondinligtingsdokumente, in beide Afrikaans en Engels, aangeheg vir u oorweging.

U is geïdentifiseer as 'n Belangstellende en Geaffekteerde Party (B&GP), wat u die geleentheid bied om die verslagdoening wat onderneem moet word vir die projekte te hersien en kommentaar te lewer sodra dit beskikbaar gestel word. **Indien u nie meer as 'n B&GP vir hierdie projek geregistreer wil wees nie**, wat aandui dat u nie meer by toekomstige kommunikasie rakende hierdie proses ingesluit wil word nie, **stel asseblief hierdie kantoor skriftelik in kennis**.

Indien u hierdie pos ontvang, en u is die grondeienaar/verhuurder van die eiendom, word u versoek om ALLE okkupeerders op u eiendom in kennis te stel van die besonderhede van hierdie pos en publieke deelname tydperk. Alternatiewelik kan u versoek dat die Omgewingassesseringspraktisyn (EAP) hierdie kennisgewing namens u onderneem deur die WHP van die okkupeerders se kontakbesonderhede te verskaf. Indien u die okkupeerder is, word u versoek om die grondeienaar/verhuurder in kennis te stel van die besonderhede van hierdie pos- en openbare deelname tydperk. Alternatiewelik kan u versoek dat die EAP hierdie kennisgewing namens jou onderneem deur die EAP van die grondeienaar/verhuurder se kontakbesonderhede te verskaf.

Neem asseblief kennis: Deur te u kies om as 'n B&GP geregistreer te word of deur 'n opmerking in te dien, stem u in tot die wettige verwerking van u persoonlike inligting met betrekking tot die beoogde doeleindes, soos beskryf deur die Wet op die Beskerming van Persoonlike Inligting, 2013 (Wet no. 4 van 2013). U persoonlike inligting sal gebruik word vir alle prosesse relevant tot hierdie spesifieke projek, in ooreenstemming met die POPI Wet, 2013. U gee ook toestemming dat u kontakbesonderhede beskikbaar gestel word, en om in ons geregleerde verslae weerspieël te word.

Thank you / Baie dankie.

Kind regards,

Madeleine Knoetze

Senior Environmental Assessment Practitioner
(EAPASA Reg: 2021/3230)

TEL: (021) 554 5195

EMAIL: madeleine@sesc.net

Unit 1 A2 | The Avenues | Parklands | Cape Town
PO Box 443 | Milnerton | 7435

WEB: www.sesc.net



ENVIRONMENTAL IMPACT ASSESSMENTS
ENVIRONMENTAL AUDITING AND MONITORING
ENVIRONMENTAL MANAGEMENT PLANS
AQUATIC ASSESSMENT
WASTE AND WATER LICENSES
PROJECT MANAGEMENT
REHABILITATION AND CLOSURE PLANS



From: madeleine@sesc.net
Sent: Monday, 11 March 2024 14:50
To: [REDACTED]
Cc: Betsy Ditcham; Schalk Van der Merwe
Subject: Karoo WEF: Pre-Application Public Participation: Background Information Documents for the proposed wind energy facilities on multiple farm portions near Beaufort West, Beaufort West Local Municipality.
Attachments: KarooWEF_BID_Mulilo_English.pdf; KarooWEF_BID_Mulilo_Afrikaans.pdf

Dear Mr. Neethling,

PRE-APPLICATION PUBLIC PARTICIPATION: NOTIFICATION OF THE INTENT TO SUBMIT MULTIPLE APPLICATIONS FOR ENVIRONMENTAL AUTHORISATION (IN THE FORM OF A BACKGROUND INFORMATION DOCUMENT) TO THE NATIONAL DEPARTMENT OF FORESTRY, FISHERIES AND ENVIRONMENT FOR THE PROPOSED WIND ENERGY FACILITIES ON MULTIPLE FARM PORTIONS NEAR BEAUFORT WEST, BEAUFORT WEST LOCAL MUNICIPALITY, CENTRAL KAROO DISTRICT MUNICIPALITY, WESTERN CAPE PROVINCE.

Sharples Environmental Services cc (hereafter referred to as SES) has been appointed by Mulilo Renewable Project Developments (hereafter referred to as Mulilo) to oversee the environmental authorisation processes, in terms of the National Environmental Management Act, 1998 (Act No. 107 of 1998) and the Environmental Impact Assessment Regulations of 2014, as amended (GNR 326 of 2017; GNR 517 of 2021), for three proposed wind energy facilities and associated infrastructure on multiple farm portions along the R381, near Beaufort West, Beaufort West Local Municipality, Central Karoo District Municipality, Western Cape.

Kindly find the Background Information Documents, in both Afrikaans and English, attached for your consideration.

You have been identified as an Interested & Affected Party (I&AP), as you are an adjacent landowner to the proposed developments, providing you with the opportunity to review and comment on the reporting to be undertaken for the projects once made available. **Should you no longer wish to be registered as an I&AP for this project**, indicating that you no longer wish to be included in future communications regarding this process, **please notify this office in writing**.

If you are receiving this mail, and you are the landowner/landlord of the property, you are requested to notify ALL occupiers on your property of the details of this mail and public participation period. Alternatively, you may request that the EAP undertake this notification on your behalf, by supplying the EAP with the occupiers' contact details. If you are the occupier, you are requested to notify the landowner/landlord of the details of this mail and public participation period. Alternatively, you may request that the EAP undertake this notification on your behalf, by supplying the EAP with the landowner/landlord contact details.

Please Note: Choosing to be registered as an I&AP or by submitting a comment, you consent to the lawful processing of your personal information in relation to the intended purposes, as described by the Protection of Personal Information Act, 2013 (Act no. 4 of 2013). Your personal information will be utilized for all processes relevant to this specific project, in compliance with the POPI Act, 2013. You also provide consent to having your contact details being made available, and to be reflected in our regulated reports.

Geagte Mr. Neethling,

VOORAANSOEK PUBLIEKE DEELNAME: KENNISGEWING VAN DIE VOORNEME OM VEELVOUDIGE AANSOEKE OM OMGEWINGSMAGTIGING (IN DIE VORM VAN 'N AGTERGRONDINLIGTING DOKUMENT) BY DIE NASIONALE DEPARTEMENT VAN BOSBOU, VISSERYE EN VOORGESTELDE ENERGIE TE DIEN IN DIE INDIENING VAN DIE

NASIONALE DEPARTEMENT VAN BOSBO, VISSERYE EN VOORGESTELDE ENERGIE BEAUFORT-WES , BEAUFORT-WES PLAASLIKE MUNISIPALITEIT, SENTRALE KAROO DISTRIK MUNISIPALITEIT, WES-KAAP PROVINSIE.

Sharples Environmental Services cc (hierna verwys as SES) is deur Mulilo Renewable Project Developments (hierna verwys as Mulilo) aangestel om toesig te hou oor die omgewingsmagtigingsprosesse, in terme van die Nasionale Omgewingsbestuurswet, 1998 (Wet No. 107 van 1998) en die Omgewings Assesseringregulasies van 2014, soos aangepas (GNR 326 van 2017; GNR 517 van 2021), vir drie voorgestelde windenergiefasiliteite en gepaardgaande infrastruktuur op verskeie plaasgedeeltes langs die R381, naby Beaufort-Wes, Beaufort-Wes Plaaslike Munisipaliteit, Sentraal Karoo Distriksmunisipaliteit, Wes-Kaap.

Sien asseblief die agtergrondinligtingsdokumente, in beide Afrikaans en Engels, aangeheg vir u oorweging.

U is geïdentifiseer as 'n Belangstellende en Geaffekteerde Party (B&GP), omrede u eiendom aangresend is aan die voorgestelde ontwikkeling, wat u die geleentheid bied om die verslagdoening wat onderneem moet word vir die projekte te hersien en kommentaar te lewer sodra dit beskikbaar gestel word. **Indien u nie meer as 'n B&GP vir hierdie projek geregistreer wil wees nie**, wat aandui dat u nie meer by toekomstige kommunikasie rakende hierdie proses ingesluit wil word nie, **stel asseblief hierdie kantoor skriftelik in kennis**.

Indien u hierdie pos ontvang, en u is die grondeienaar/verhuurder van die eiendom, word u versoek om ALLE okkupeerders op u eiendom in kennis te stel van die besonderhede van hierdie pos en publieke deelname tydperk. Alternatiewelik kan u versoek dat die Omgewingassesseringspraktisyn (EAP) hierdie kennisgewing namens u onderneem deur die WHP van die okkupeerders se kontakbesonderhede te verskaf. Indien u die okkupeerder is, word u versoek om die grondeienaar/verhuurder in kennis te stel van die besonderhede van hierdie pos- en openbare deelname tydperk. Alternatiewelik kan u versoek dat die EAP hierdie kennisgewing namens jou onderneem deur die EAP van die grondeienaar/verhuurder se kontakbesonderhede te verskaf.

Neem asseblief kennis: Deur te u kies om as 'n B&GP geregistreer te word of deur 'n opmerking in te dien, stem u in tot die wettige verwerking van u persoonlike inligting met betrekking tot die beoogde doeleindes, soos beskryf deur die Wet op die Beskerming van Persoonlike Inligting, 2013 (Wet no. 4 van 2013). U persoonlike inligting sal gebruik word vir alle prosesse relevant tot hierdie spesifieke projek, in ooreenstemming met die POPI Wet, 2013. U gee ook toestemming dat u kontakbesonderhede beskikbaar gestel word, en om in ons gereguleerde verslae weerspieël te word.

Thank you / Baie dankie.

Kind regards,

Madeleine Knoetze

Senior Environmental Assessment Practitioner
(EAPASA Reg: 2021/3230)

TEL: (021) 554 5195

EMAIL: madeleine@sesc.net

Unit 1 A2 | The Avenues | Parklands | Cape Town
PO Box 443 | Milnerton | 7435

WEB: www.sesc.net



The image shows a banner for SES Environmental Services. On the left is the company logo, which consists of the letters 'SES' in a stylized font inside a green oval, with 'Sharples' and 'Est 1998' written below it. To the right of the logo is a list of services: ENVIRONMENTAL IMPACT ASSESSMENTS, ENVIRONMENTAL AUDITING AND MONITORING, ENVIRONMENTAL MANAGEMENT PLANS, AQUATIC ASSESSMENT, WASTE AND WATER LICENSES, PROJECT MANAGEMENT, and REHABILITATION AND CLOSURE PLANS. On the far right of the banner is a circular seal that says 'PROFESSIONAL SERVICE since 1998'. The background of the banner features a collage of images: a beach with waves, a tree branch, two colorful parrots, solar panels, and a landscape with a tree.

From: madeleine@sesc.net
Sent: Tuesday, 20 February 2024 17:08
To: 'Jaco Nel'
Cc: 'Christo Stroebel'; Betsy Ditcham
Subject: RE: REGISTRATION AS INTERESTED PARTY - MULILO WEF NEAR BEAUFORT WEST
Attachments: KarooWEF_BID_Mulilo_Afrikaans_19 February 2024.pdf;
KarooWEF_BID_Mulilo_English_19 February 2024.pdf

Good afternoon Jaco,

I hope you are doing well.

Thank you for registering as an Interested and Affected Party on behalf of AVIC International Flight Training Academy (Pty) Ltd. - (AIFA) for the proposed wind energy facility development near Beaufort West, we have captured your contact details on our database.

Please see the Background Information Document (in Afrikaans and English) attached for your consideration.

Once the Basic Assessment Reports for the proposed developments are distributed for public review as part of the 30-day Public Participation Process, you will be notified of their availability.

Thank you / Dankie.

Kind regards,

Madeleine Knoetze
Senior Environmental Assessment Practitioner
(EAPASA Reg: 2021/3230)
TEL: (021) 554 5195
EMAIL: madeleine@sesc.net

Unit 1 A2 | The Avenues | Parklands | Cape Town
PO Box 443 | Milnerton | 7435
WEB: www.sesc.net

SESC
Sharples Est 1998
Environmental Services

ENVIRONMENTAL IMPACT ASSESSMENTS
ENVIRONMENTAL AUDITING AND MONITORING
ENVIRONMENTAL MANAGEMENT PLANS
AQUATIC ASSESSMENT
WASTE AND WATER LICENSES
PROJECT MANAGEMENT
REHABILITATION AND CLOSURE PLANS

PROFESSIONAL SERVICE since 1998

From: Jaco Nel [REDACTED]
Sent: Tuesday, February 20, 2024 11:45 AM
To: madeleine@sesc.net
Cc: Christo Stroebel [REDACTED]
Subject: REGISTRATION AS INTERESTED PARTY - MULILO WEF NEAR BEAUFORT WEST

Good day,

AVIC International Flight Training Academy (Pty) Ltd. - (AIFA), herewith would like to register as an interested party for the proposed Mulilo Renewable Project Developments WEF near Beaufort West.

Kind Regards / Vriendelike Groete



Email messages and any accompanying attachments may contain information that is confidential and is subject to legal privilege. If you are not the intended recipient, do not read, use, disseminate, distribute or copy this message or attachments. If you have received this message in error, please notify the sender immediately, and delete this message. Thank you

🌳 Save a tree. Don't print this e-mail unless it's really necessary



GEORGE

TEL: +27 (0) 44 873 4923 **FAX:** +27 (0) 44 874 5953

EMAIL: info@sesc.net **WEBSITE:** www.sesc.net

ADDRESS: Unit 17 Cathedral Square,
Cathedral Street, George, 6530

PO BOX: 9087, George, 6530

CAPE TOWN

TEL: +27 (0) 21 554 5195 **FAX:** +27 (0) 86 575 2869

EMAIL: betsy@sesc.net **WEBSITE:** www.sesc.net

ADDRESS: Tableview, Cape Town, 7441

PO BOX: 443, Milnerton, 7435

ANNEXURE F - PUBLIC PARTICIPATION PROCESS

Appendix F2 – Pre-Application Public Participation undertaken

Appendix F2b - Comments received during the Pre-Application Public Participation

APPENDIX F2B
COMMENTS/CORRESPONDENCE DURING THE PRE-APPLICATION
CONSULTATION PROCESS

Please note that due to the restrictions of the POPIA, comments and correspondence received during Pre-Application consultation process are not made public.

Please refer to Appendix F2c of the Draft Basic Assessment Report for a verbatim register of the comments and correspondence received.



GEORGE

TEL: +27 (0) 44 873 4923 **FAX:** +27 (0) 44 874 5953

EMAIL: info@sesc.net **WEBSITE:** www.sesc.net

ADDRESS: Unit 17 Cathedral Square,
Cathedral Street, George, 6530

PO BOX: 9087, George, 6530

CAPE TOWN

TEL: +27 (0) 21 554 5195 **FAX:** +27 (0) 86 575 2869

EMAIL: betsy@sesc.net **WEBSITE:** www.sesc.net

ADDRESS: Tableview, Cape Town, 7441

PO BOX: 443, Milnerton, 7435

ANNEXURE F - PUBLIC PARTICIPATION PROCESS

Appendix F2 – Pre-Application Public Participation undertaken

Appendix F2c - Comments and Responses register (in accordance with the
EIA Regulations, as amended)



GEORGE
 TEL: +27 (0) 44 873 4923 FAX: +27 (0) 44 874 5953
 EMAIL: info@sesc.net WEBSITE: www.sesc.net
 ADDRESS: Unit 17 Cathedral Square,
 Cathedral Street, George, 6530
 PO BOX: 9087, George, 6530

CAPE TOWN
 TEL: +27 (0) 21 554 5195 FAX: +27 (0) 86 575 2869
 EMAIL: betsy@sesc.net WEBSITE: www.sesc.net
 ADDRESS: Tableview, Cape Town, 7441
 PO BOX: 443, Milnerton, 7435

THE PROPOSED MULILO KAROO WIND POWER 2 DEVELOPMENT ON THE REMAINDER OF THE FARM MIDDLE KRAAL 98, AND PORTION 1, 3 AND THE REMAINDER OF THE FARM WATERVAL 101, NEAR BEAUFORT WEST, BEAUFORT WEST LOCAL MUNICIPALITY, CENTRAL KAROO DISTRICT MUNICIPALITY, WESTERN CAPE

Comments and Responses Report

Date of Comment, format of comment, name of organisation/I&AP	Comment	Response from EAP/Applicant/ Specialist
Organs of State		
28/02/2024 E-mailed comment Transnet SOC Ltd Anel Abrahams	Kindly note that Transnet will not directly be affected by the proposal. The distance from the Railway line to the development site is approximately 21KM.	This comment is hereby acknowledged by the Environmental Assessment Practitioner (EAP).
20/02/2024 E-mailed comment Western Cape Department of Environmental Affairs and Development Planning Adri La Meyer	Your email of 19 February 2024 refers. Please register the Department of Environmental Affairs and Development Planning as a commenting authority for the 3 BA applications. You may add me as the Department's contact person for the BA applications. Please could you notify me when the BARs are available for comments? I assume that you will release separate BARs, but undertake a combined PPP. Adequate consultation with SANParks and especially the Karoo National Park is required due to the proximity of the proposed WEFs near the Karoo National Park. We look forward to receiving notification of the release of the Draft BARs.	The Department has been registered as a Commenting Authority for the project and your contact information has been captured onto the I&AP and Stakeholder Database. Once the documentation is made available for public review, all documents, and if requested, the spatial data, pertaining to the proposed development will be made available to the Department. With regards to the way forward on the Public Participation Process (PPP) to be undertaken, that is correct, a consolidated PPP approach is anticipated with the submission of three respective BARs, one for each phase of the cluster. SANParks has been identified as a Stakeholder of the proposed developments. All correspondence with the representatives of SANParks will be included as part of the Appendices to the BARs. Please refer to Appendix F2d of the DBAR for the Pre-application Meeting Minutes with the representatives of SANParks and the Karoo National Parks. Further to this, the following request was sent to the commenter on 21 February 2024: As noted through the correspondence between Adri and myself yesterday, the applications for the proposed developments will be submitted to DFFE as the Competent Authority and the Western Cape Department of Environmental Affairs & Development Planning as the Commenting Authority. It is noted that the Departments have Biodiversity Directorates from whom comments on projects are often required. Within DFFE, the Biodiversity Directorate has a separate contact stream for all applications submitted for Environmental Authorisation (BCadmin@dfpe.gov.za). Kindly confirm whether DEA&DP has a specific contact person within the Biodiversity Directorate to whom project related information must be sent to during public

Date of Comment, format of comment, name of organisation/I&AP	Comment	Response from EAP/Applicant/ Specialist
<p>21/02/2024 E-mailed response Western Cape Department of Environmental Affairs and Development Planning Adri La Meyer</p>	<p>Kindly note that I will distribute the request for comments to the relevant directorates within the Department. It is my role to identify which directorates should be involved in commenting, and then request their comments on the report. It is not necessary for the EAP to engage with specific directorates within the Department if the application resides under the DFFE or DMRE as CA.</p> <p>Although we have a Coastal and Biodiversity Management Directorate in the Department, their role/function do not include commenting on EIAs (except for biodiversity offsets) as they simply do not have the capacity to do so. We therefore rely on our biodiversity custodian of the Western Cape, CapeNature, to provide comments on biodiversity aspects.</p> <p>You may therefore proceed to communicate with me at this email address. The relevant directorates can be approached for clarity on their comments during the PPP.</p>	<p>participation, or whether all correspondence between the various Directorates are undertaken internally once information is provided through this email address.</p> <p>The response was acknowledged by the Environmental Assessment Practitioner.</p>
<p>21/02/2024 Emailed correspondence Eskom John Geeringh</p>	<p>Please send me a KMZ file of the affected properties, proposed development and proposed grid connection. Please find attached Eskom requirements for work at or near Eskom servitudes and infrastructure, as well as a setbacks guideline for RE Developments.</p>	<p>Thank you for confirming your interest in the project and for sending through the guidelines and requirements. These will be taken cognisance of by the project Team. Please note we are in the pre-application phase of the proposed developments. Once the information becomes available, the project reports and associated datafiles (layouts, affected properties, site boundaries, and the proposed connection corridors) will be made available to you.</p>
<p>20/02/2024 Emailed correspondence Beaufort West Local Municipality Ashley Mitchell</p>	<p>Vind aangeheg die aansoek vorms itv SPLUMA.</p> <p><i>Find attached the application forms in terms of the SPLUMA.</i></p>	<p>Baie dankie vir die dokumentasie wat deurgestuur is. Ek sal dit deurvoer na die Kliënt toe vir verdere aksie. Intussen, kan u dalk vir my 'n kontak verskaf vir die omgewingsbestuur tak van die Munisipaliteit.</p> <p><i>Thank you for the documentation sent through. I will distribute it to the client for further action. In the meantime, would you be able to provide me with the contact details of the environmental management branch of the Municipality. I look forward to hearing from you.</i></p>
<p>20/02/2024 Emailed correspondence Air Traffic and Navigation Services (ATNS) Doris Khoza</p>	<p>The SACAA has transferred the assessments for Solar and Wind energy applications to Air Traffic and Navigation Services (ATNS) as published on the SACAA website. A formal application must be lodged with Air Traffic and Navigation Services (ATNS) for a formal obstacle assessment to be conducted. Their responsibility would pertain to the assessments, maintenance, and all other related matters in respect to Solar and Wind Farm assessments.</p>	<p>Thank you for confirming the Air Traffic and Navigation Services' (ATNS) involvement in the Solar and Wind energy infrastructure impact assessments. They have been included as Interested and Affected Parties of the proposed developments and will receive all project related information as information is released for public review and commenting.</p>

Date of Comment, format of comment, name of organisation/I&AP	Comment	Response from EAP/Applicant/ Specialist
Registered Interested and Affected Parties		
<p>20/02/2024 Emailed correspondence Endangered Wildlife Trust Bonnie Schumann</p>	<p>Please can you send me the shapefiles for the proposed development.</p> <p>The Endangered Wildlife Trust has an interest as a number of species of conservation concern are in this immediate area. Please include on your mailing list the following EWT staff, as the programmes will comment on different spp and aspects of the proposed development.</p> <p>Dr Gareth Tate: Programme Manager Birds of Prey Programme: gareth@ewt.org.za Zanne Brink: Programme Manager Drylands Conservation Programme zanneb@ewt.org.za Oscar Mohale: Programme Manager Wildlife and Energy oscarm@ewt.org.za</p>	<p>Thank you for confirming the Endangered Wildlife Trust's interest in the project.</p> <p>Please note we are in the pre-application phase of the proposed developments. Once the information becomes available, the project reports and associated datafiles (layouts and site sensitivity shapefiles) will be made available to you. I have updated our I&AP register and will also send the Background Information Document through to them for information purposes.</p>
<p>19/02/2024 Emailed correspondence Karoo Gateway Dr. Bambie Heiberg</p>	<p>Ek neem kennis van u skrywe hieronder aangeheg. Maak asb SEKER dat AIFA die Operateurs van die Karoo Gateway Lughawe, ook in alles geken word waar hulle lugruim opleiding en draaisirkels baie naby aan hierdie beoogde ontwikkeling kan wees en die windmaste groot sekuriteitsrisikos sou kon inhou.</p> <p>Die CEO Mnr Christo Stroebel en ander Senior Bestuurders word hiermee in ge-CC. Let asb daarop dat AIFA internasionale vlieeniers van hier af oplei en dat julle beoogde windplaas ontwikkeling 'n reuse risiko kan veroorsaak.</p> <p>Ek gaan ook vra dat julle sonder vertraging aan almal hierbo betrokke, asook Lizell Stroh van CAA alle korrespondensie stuur ten einde seker te maak dat aan alle regulasies aangaande lugverkeer voldoen word en daar GEEN risikos van enige aard vir enige bedrywighede verwant aan die Karoo Gateway Lughawe, sal wees nie.</p> <p>Erken asb ontvangs van hierdie skrywe asook dat julle AIFA en CAA onder alle omstandighede op hoogte van sake sal hou.</p> <p><i>I take note of the below-mentioned information. Please ENSURE that AIFA, the operators of the Karoo Gateway Airport, is also included where their airspace used for training and turning circles, will be located within close proximity to the proposed development and where the wind turbines can hold a big safety risk.</i></p>	<p>Baie dankie vir u epos en dat u ontvangs daarvan bevestig het.</p> <p>Ons teken AIFA (Mr. Stroebel, Mr. Fourie en Mr. van Niekerk) aan as Belanghebbende partye, en bevestig hiermee dat hulle alle inligting sal ontvang rakend toe projek. Ek het die agtergronddokumente aangeheg ter inligtingsonthalwe vir die benoemde partye.</p> <p>Neem asseblief kennis dat Me. Stroh reeds op ons databasis as Belanghebbende party geloods is.</p> <p>Wanneer verdere inligting verskaf word aanrakend die projekte, sal dit deurgevoer word aan alle individue wat in die epos ingeskakel was.</p> <p>Indien u op die stadium van die projek verdere navrae het, moet asseblief nie huiwer om ons te kontak nie.</p> <p><i>Thank you very much for your email and for confirming its receipt.</i></p> <p><i>We register AIFA (Mr. Stroebel, Mr. Fourie and Mr. van Niekerk) as Interested parties, and hereby confirm that they will receive all information regarding the project. I have attached the background documents for the information of the named parties.</i></p> <p><i>Please note that Ms. Stroh is already listed on our database as an Interested Party.</i></p>

Date of Comment, format of comment, name of organisation/I&AP	Comment	Response from EAP/Applicant/ Specialist
	<p><i>The CEO, Mr. Christo Stroebel and other Senior Managers have been cc'd in. Please note AIFA trains international pilots from this airport and that the proposed development can have a massive impact thereon.</i></p> <p><i>I am also going to request that you notify all cc'd participants without any delay, including Lizell Stroh of CAA, of all information made available in order to ensure compliance with the relevant regulations and to ensure that there will be NO impacts exercised onto the Karoo Gateway Airport.</i></p> <p><i>Please acknowledge that you will keep AIFA and CAA to date with regards to all proceedings regarding the project.</i></p>	<p><i>When further information is provided regarding the projects, it will be passed on to all individuals who were included in the e-mail.</i></p> <p><i>If you have any further queries at the stage of the project, please do not hesitate to contact us.</i></p>
<p>20/02/2024 Emailed correspondence Karoo Gateway Dr. Bambie Heiberg</p>	<p>U terugvoer en onderneming gegee, word opreg waardeer. Geliewe asb in die toekoms die volgende e-pos adres te gebruik: bambie@karoogateway.co.za</p> <p><i>Your feedback to my initial email is greatly appreciated. Please use the following email address in the future: bambie@karoogateway.co.za</i></p>	<p>Baie dankie vir die bevestiging van u epos adres. Ek het ons databasis opgedateer met u korrekte epos adres.</p> <p>Baie dankie vir u terugvoer dusver. Dit word opreg waardeer.</p> <p><i>Thank you for the confirmation of your email address. The database has been updated accordingly. Thank you for the feedback received thus far. It is greatly appreciated.</i></p>



GEORGE

TEL: +27 (0) 44 873 4923 **FAX:** +27 (0) 44 874 5953

EMAIL: info@sesc.net **WEBSITE:** www.sesc.net

ADDRESS: Unit 17 Cathedral Square,
Cathedral Street, George, 6530

PO BOX: 9087, George, 6530

CAPE TOWN

TEL: +27 (0) 21 554 5195 **FAX:** +27 (0) 86 575 2869

EMAIL: betsy@sesc.net **WEBSITE:** www.sesc.net

ADDRESS: Tableview, Cape Town, 7441

PO BOX: 443, Milnerton, 7435

ANNEXURE F - PUBLIC PARTICIPATION PROCESS

Appendix F2 – Pre-Application Public Participation undertaken

Appendix F2c - Pre-Application Meeting Minutes: SANParks



GEORGE
TEL: +27 (0) 44 873 4923 **FAX:** +27 (0) 44 874 5953
EMAIL: info@sesc.net **WEBSITE:** www.sescc.net
ADDRESS: Unit 17 Cathedral Square,
 Cathedral Street, George, 6530
PO BOX: 9087, George, 6530

CAPE TOWN
TEL: +27 (0) 21 554 5195 **FAX:** +27 (0) 86 575 2869
EMAIL: betsy@sesc.net **WEBSITE:** www.sescc.net
ADDRESS: Tableview, Cape Town, 7441
PO BOX: 443, Milnerton, 7435

MEETING MINUTES

Pre-Application Consultation: SANParks

PROJECT:

THE PROPOSED MULILO KAROO WIND POWER FARMS AND ASSOCIATED INFRASTRUCTURE NEAR BEAUFORT WEST,
 BEAUFORT WEST LOCAL MUNICIPALITY, CENTRAL KAROO DISTRICT MUNICIPALITY, WESTERN CAPE.

Date: Friday, 19 April 2024

Time: 15h00 – 16h00

Venue: Microsoft Teams (Online meeting)

Attendees:

Name of Attendee	Organization	Position in Organisation	Contact Details
Jeffrey Manuel (JM)	South African National Parks (SANParks)	Planning & Development Manager	jeffrey.manuel@sanparks.org
Roland Januarie (RJ)	SANParks	Karoo National Park: Park Manager	Roland.Januarie@sanparks.org
Riaan Nel (RN)	SANParks	Senior Section Ranger/Conservation Manager	Riaan.Nel@sanparks.org
Mxolisi Molefe (MM)	SANParks	Intern: Planner – Conservation Services	Mxolisi.Molefe@sanparks.org
Andrew Pearson (AP)	Mulilo Renewable Project Developments (Mulilo)	Senior Manager: Head of Environment	andrew@mulilo.com
Muhsin Osman (MO)	Mulilo	Developer: Wind	muhsin@mulilo.com
Betsy Ditcham (BD)	Sharples Environmental Services cc (SES)	Lead Environmental Assessment Practitioner (EAP) and Project Manager	betsy@sesc.net
Madeleine Knoetze (MK)	SES	Responsible EAP	madeleine@sesc.net



	Subject	Discussion	Action By
1	Introductions	BD welcomed all attendees to the meeting and provided an overview of the points of discussion of the meeting.	
2	Summary of discussions regarding the project layouts and processing requirements	<p>BD provided an overview of the proposed developments. This included the project locations, the site sensitivities based on the DFFE National Screening Tool Results, and the specialist assessments being undertaken in accordance with the results of the Environmental Screening Tool.</p> <p>BD provided feedback towards the site and layout identification process for the proposed developments. Through this, it was indicated that SANPark's recommendations, as provided in April 2020, and the findings of the respective specialists, were used to develop the layout of the proposed developments.</p> <p>AP provided further detailing towards the SANParks correspondence undertaken in 2020. Following the recommendations received from SANParks, actions towards addressing the concerns raised were taken by the development team. The Environmental Impact Assessment (EIA) processing was however delayed until recently due to the grid capacity constraints observed in the area. During this time period, the Avifaunal and Bats Specialists implemented extensive, long-term monitoring programmes.</p> <p>BD provided an overview of the legislative requirements and the consultative process to be undertaken as part of the EIA Process for the proposed development. It was further confirmed that the current meeting formed part of the Pre-Application Consultation process. Furthermore, consultation with other stakeholder groups will also be undertaken prior to the submission of the Application form to the Department of Forestry, Fisheries and Environment.</p>	
3	Summary of discussions held Regarding Stakeholder Consultations	<p>BD detailed the pre-identified interest groups (from a conservation perspective) captured as part of the Stakeholder Database. The meeting was then opened for discussions and further stakeholder recommendations.</p> <p>JM indicated from a National perspective, he was in agreement with the pre-identified Stakeholders.</p> <p>RJ enquired with regard to the consultation process to be undertaken by the EAP towards communicating the intent of the proposed developments to the greater community.</p> <p>BD confirmed in addition to the focus group consultations proposed, an comprehensive Interested and Affected (I&AP) database has been compiled. Notifications will be</p>	

		<p>distributed to the community by means of the farmers' association in the area, the ward councillor, newspaper adverts, site notices and a public open day (to be held during the public review period of the proposed developments).</p> <p>AP suggested the South African Bat Assessment Association (SABAA) to be included as Stakeholders.</p> <p>RJ indicated the presence of two Farmers' Associations in the area to be included in future correspondence.</p> <p>BD requested the contact details for the Associations be forwarded to SES, if possible.</p>	<p>SES</p> <p>SANParks</p>
4	<p>Summary of General discussions</p>	<p>JM complimented the development team in their incorporation of SANParks' recommendations of 2020. JM emphasised that the concerns raised in 2020 still remain in place.</p> <p>MM proposed a Visual Impact Assessment (VIA) be undertaken for the proposed developments.</p> <p>JM further emphasised the need for the VIA to make use of strategic viewpoints from the Karoo National Parks (KNP). Furthermore, a proposal was made for the turbines facing the KNP, radar triggered pilot lights be used. As such, these pilot lights are only activated upon aircraft approach. It was emphasised that the lighting on turbines positioned towards the Park could be jarring in the evenings.</p> <p>AP and MO indicated the pilot light recommendations could be accommodated by the developers.</p> <p>BD indicated the VIA does form part of the set of specialist studies undertaken for the proposed developments. Upon receipt of the VIA, the EAP will ensure that the pilot light considerations were included in the mitigation measures provided.</p> <p>JM requested, if possible, a .kml of the development layouts be provided to the attendees of the meeting for record keeping purposes.</p> <p>JM enquired about the current status of the proposed grid connection corridor of the proposed developments. MO indicated the Grid Capacity has recently opened at the Droërivier substation and the MTS located at the previously</p>	<p>Mulilo</p> <p>SES</p> <p>SES</p>



		<p>approved Red Cap Developments towards the North of the proposed development sites. The timelines towards finalising the routes are currently unclear, however the processes are underway.</p> <p>RJ indicated the presence of two rest camps proposed to be developed on top of the mountains which must be taken into consideration as part of the VIA and the Socio-economic Impact Assessment (SIA).</p> <p>BD requested the locations of these camps be provided to SES for further distribution to the respective specialists.</p> <p>RN highlighted the cliffs and escarpments within the KNP are nesting areas for the black eagles. AP mentioned that Japie Claasen was consulted initially to determine the nesting areas of the Black Eagles. Due to the distance between the proposed developments and the KNP, the nests located within the KNP are likely not going to be reflected, or affected by the proposed developments.</p> <p>BD indicated the Avifaunal Impact Assessment (AIA) will be distributed to SANParks as part of the legislated Public Participation Process (PPP) in terms of the EIA Regulations.</p>	<p>SES</p> <p>SANParks</p> <p>SES</p>
5.	Conclusion and Way Forward	<p>BD indicated the next stage of the process is consultation and a physical meeting to be scheduled during the EIA Application phase of the proposed developments.</p> <p>BD thanked all participants for their time and inputs, and adjourned the meeting.</p>	



Annexure A. SANParks Pre-Application Consultation Presentation





THE PROPOSED MULILO KAROO WIND POWER FARMS AND ASSOCIATED INFRASTRUCTURE NEAR BEAUFORT WEST, BEAUFORT WEST LOCAL MUNICIPALITY, CENTRAL KAROO DISTRICT MUNICIPALITY, WESTERN CAPE.

Applicant:

Mulilo Karoo Wind Power (Pty) Ltd
Mulilo Karoo Wind Power 2 (Pty) Ltd
Mulilo Karoo Wind Power 3 (Pty) Ltd

Representatives:

Ameesha Sanker (Senior Project Manager: Environmental)
Andrew Pearson (Senior Manager: Head of Environmental)
Muhsin Osmon (Project Developer: Wind)

Environmental Assessment Practitioner:

Sharples Environmental Services CC

Representatives:

Betsy Ditcham (Lead EAP and Project Manager)
Madeleine Knoetze (EAP)

SANParks Pre-Application Consultation Meeting





Meeting Agenda

- ▶ Introductions and Welcome
- ▶ Purpose and Goals of the Meeting
- ▶ Project Overview & Specialist Assessments
- ▶ Project Requirements
 - ▶ Process to be followed
 - ▶ Upfront Concern Identification
 - ▶ Key Stakeholders Confirmation
- ▶ Conclusion and Way forward



Introductions and Welcome

- ▶ Meeting attendees:
 - ▶ SANParks (Key Stakeholders)
 - ▶ Mr. Jeffrey Manuel
 - ▶ Mr. Roland Januarie
 - ▶ Mr. Riaan Nel
 - ▶ Mr. Mxolisi Molefe
 - ▶ Mulilo Renewable Project Developers (Developers)
 - ▶ Mr. Andrew Pearson
 - ▶ Ms. Ameesha Sanker
 - ▶ Mr. Muhsin Osman
 - ▶ Sharples Environmental Services (EAP)
 - ▶ Mrs. Betsy Ditcham
 - ▶ Ms. Madeleine Knoetze





Purpose and Goals of the Meeting

- ▶ Objective 1: To provide SANParks with a background to the proposed developments;
- ▶ Objective 2: To provide SANParks with an overview of the proposed developments and the various specialist assessments undertaken towards limiting the impact on the surrounding environment as well as the Karoo National Park;
- ▶ Objective 3: To provide process requirements in terms of the respective legislations.
- ▶ Objective 4: Identify Stakeholders and Concerns SANParks may have with regard to the proposed developments.



Project Overview:

Attributes	Description
Local Municipality	Beaufort West Local Municipality
District Municipality	Central Karoo District Municipality
Province	Western Cape
Centre Point Coordinates of Cluster	32° 3'11.88"S 22°29'53.26"E
Nearest Town	Beaufort West (approx. 30 km South of the proposed development)
Main Roads within proximity to development areas	R381 (Leading through the Molteno Pass to Loxton in the North)

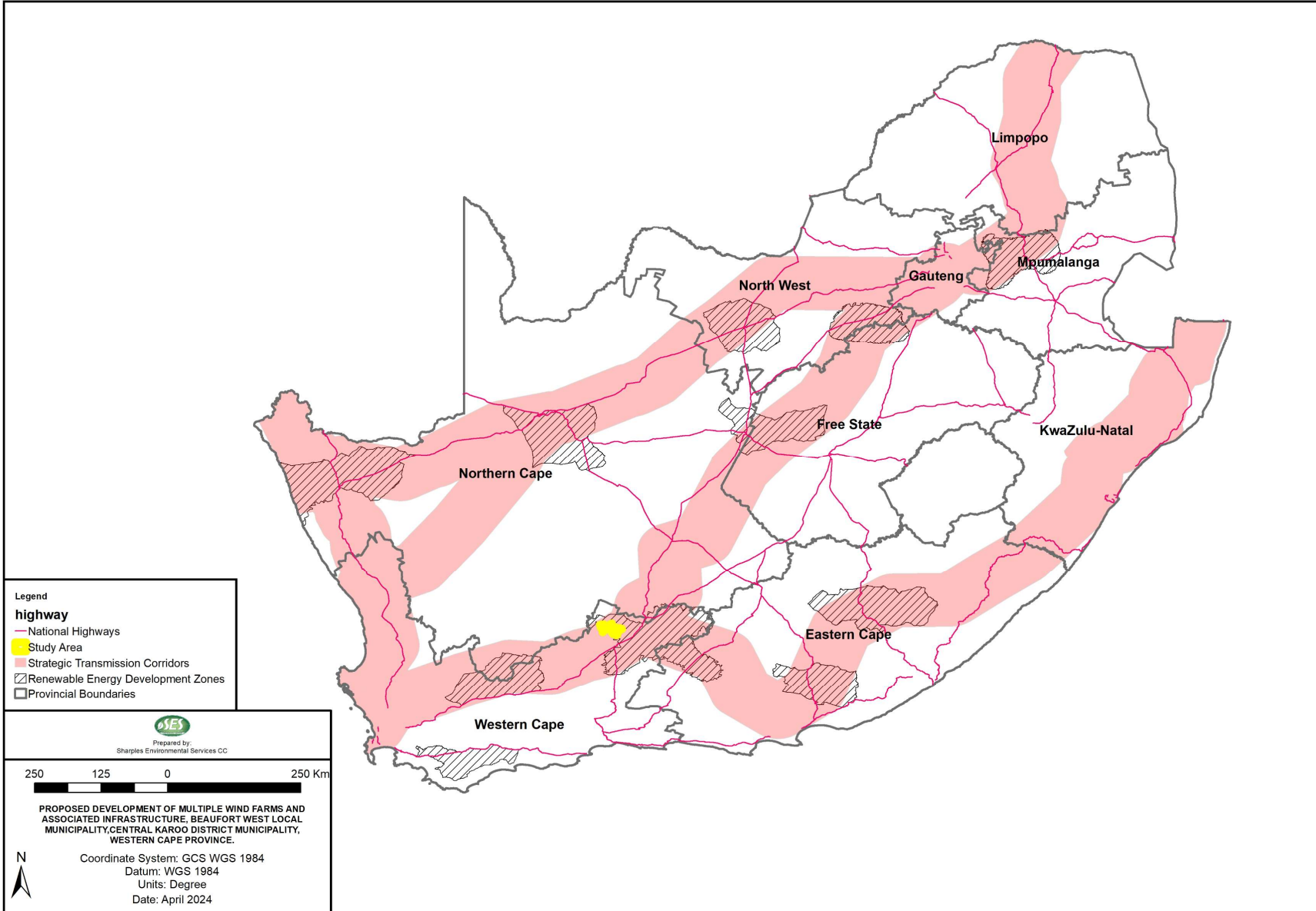


Project Overview (Continued):

Attributes	Description
Combined extent of respective Phases	Phase 1: 7 378 ha Phase 2: 10 634 ha Phase 3: 1 579 ha
Combined Development extent	Phase 1: 5 523 ha Phase 2: 5 567 ha Phase 3: 1 518 ha
Registration Division	Beaufort West Major
Combined generation capacity of proposed development	Up to 867 MW
Number of proposed wind power facilities	3 (With an output capacity varying between up to 144,5 MW and up to 382,5 MW)

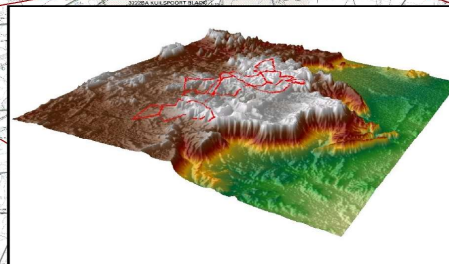
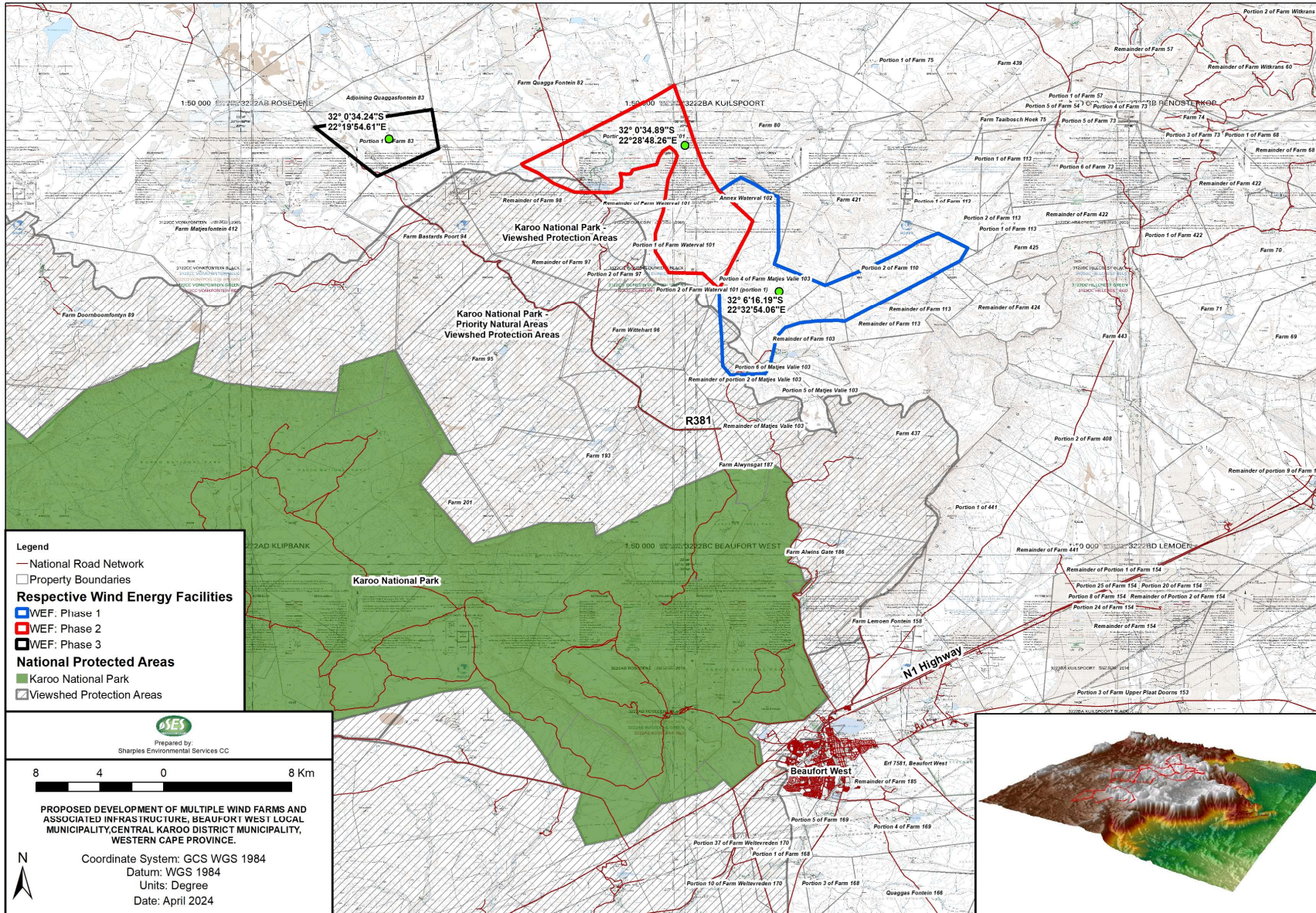


PROXIMITY TO STC & REDZ





LOCALITY MAP





Findings of the Screening Tool

Theme	Very High	High	Medium	Low
Agriculture	X			
Animal species		X		
Aquatic Biodiversity	X			
Archaeological and Cultural Heritage				X
Avian (Wind)				X
Bats (Wind)		X		
Civil Aviation (Wind)				X
Defence (Wind)				X
Flicker	X			
Landscape (Wind)	X			



Findings of the Screening Tool (Cont.)

	Very High	High	Medium	Low
Palaeontology	X			
Noise	X			
Plant Species			X	
RFI (Wind)	X			
Terrestrial Biodiversity	X			
Vulture Species Theme				X



Specialist Reports Required in terms of the Screening Tool and actions

	Status	Assessment To be undertaken	Appointed Specialists
Agricultural Assessment	Site Verified	Compliance Statement	Johann Lanz
Landscape and Visual Impact Assessment	Site Verified	Impact Assessment	LOGIS (Lourens du Plessis)
Archaeological and Cultural Heritage Impact Assessment	Site Verified	Impact Assessment	ASHA (Jayson Orton)
Palaeontological Impact Assessment	Site Verified	Impact Assessment	NatureVivo (John Almond)
Terrestrial Biodiversity Impact Assessment	Site Verified	Impact Assessment	The Biodiversity Company (Martinus Erasmus)
Civil Aviation Assessment	Site Verified	Compliance Statement	Zutari (P. Padayachee)
Defense Assessment	Site Verified	Compliance Statement	Zutari (Patrick Killick)
RFI Assessment	Site Verified	Impact Assessment	ITC Services (Henk Goosen)
Geotechnical Assessment	Site Verified	Impact Assessment	TerraGeotechnical (Eugene van der Walt)
Socio-economic Assessment	Site Verified	Impact Assessment	Tony Barbour Environmental Services



Specialist Reports Required in terms of the Screening Tool and actions (Cont.)

Specialist Report Required	Status	Assessment To be undertaken	Appointed Specialists
Plant Species Assessment	Site Verified	Impact Assessment	The Biodiversity Company (Martinus Erasmus)
Animal Species Assessment	Site Verified	Impact Assessment	The Biodiversity Company (Martinus Erasmus)
Avian Assessment	Site Verified	Impact Assessment	ERM (Owen Davies)
Bats Assessment	Site Verified	Impact Assessment	ERM (Owen Davies)
Traffic Assessment	Site Verified	Impact Assessment	SMEC (Reabetswe Mokomele)
Noise Assessment	Site Verified	Impact Assessment	AERES (Morne de Jager)
Aquatic Biodiversity Assessment	Site Verified	Impact Assessment	Antoni Belcher
Flicker Assessment (Incorporated into Visual Assessment)	Site Verified	Impact Assessment	LOGIS (Lourens du Plessis)

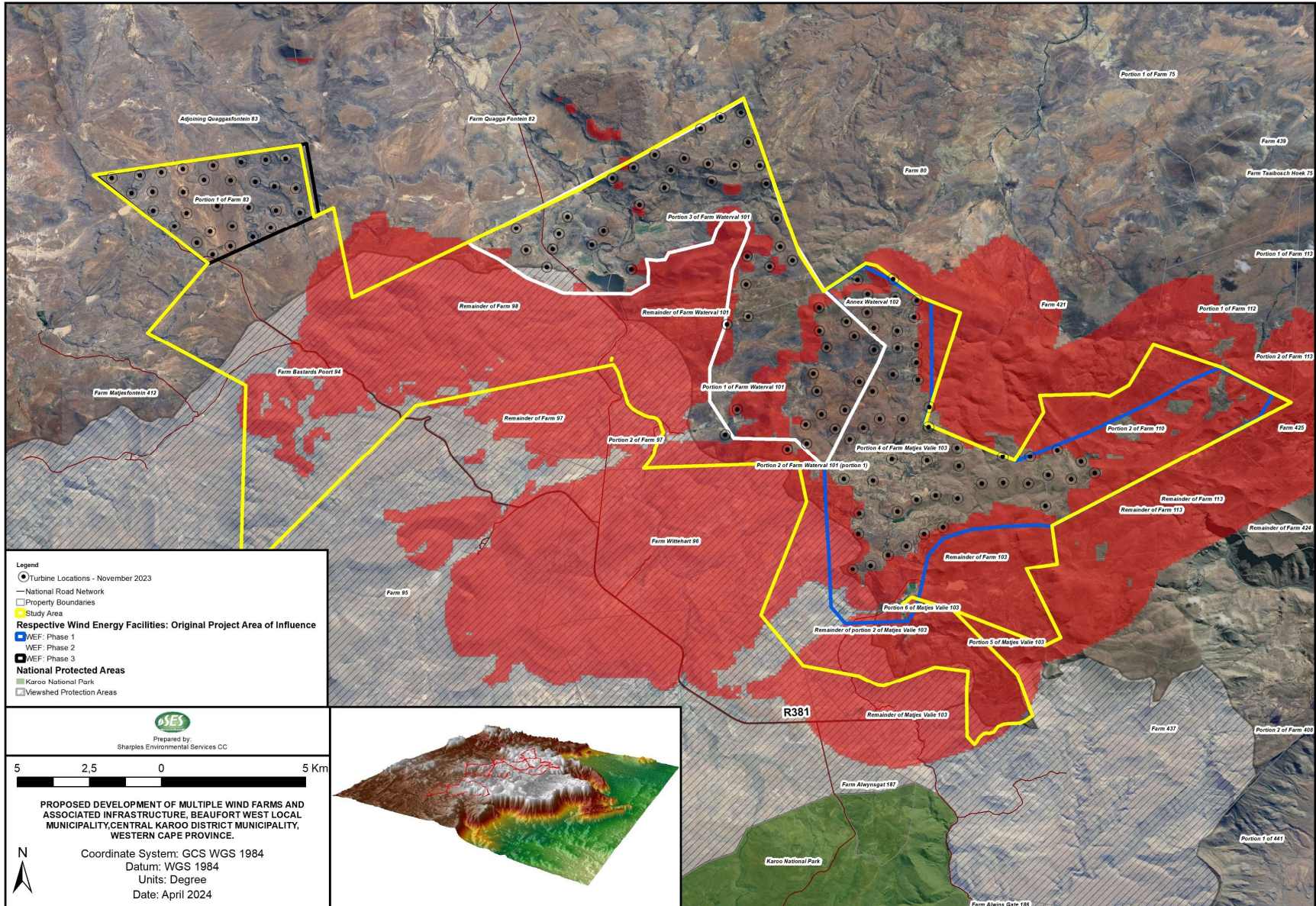
Determination of the Site Layout

- ▶ Initial Study Area under consideration for the purpose of establishing the proposed developments;
- ▶ Study Area allocation following discussions with SANParks in April 2020:
 - ▶ Karoo National Park and Associated viewshed
 - ▶ The Findings of the VERA Model (Areas of High Risk incorporated)
- ▶ 2024 Proposed development footprints:
 - ▶ Taking into consideration the findings of the various specialist assessments; and
 - ▶ The Karoo National Park Viewshed Area



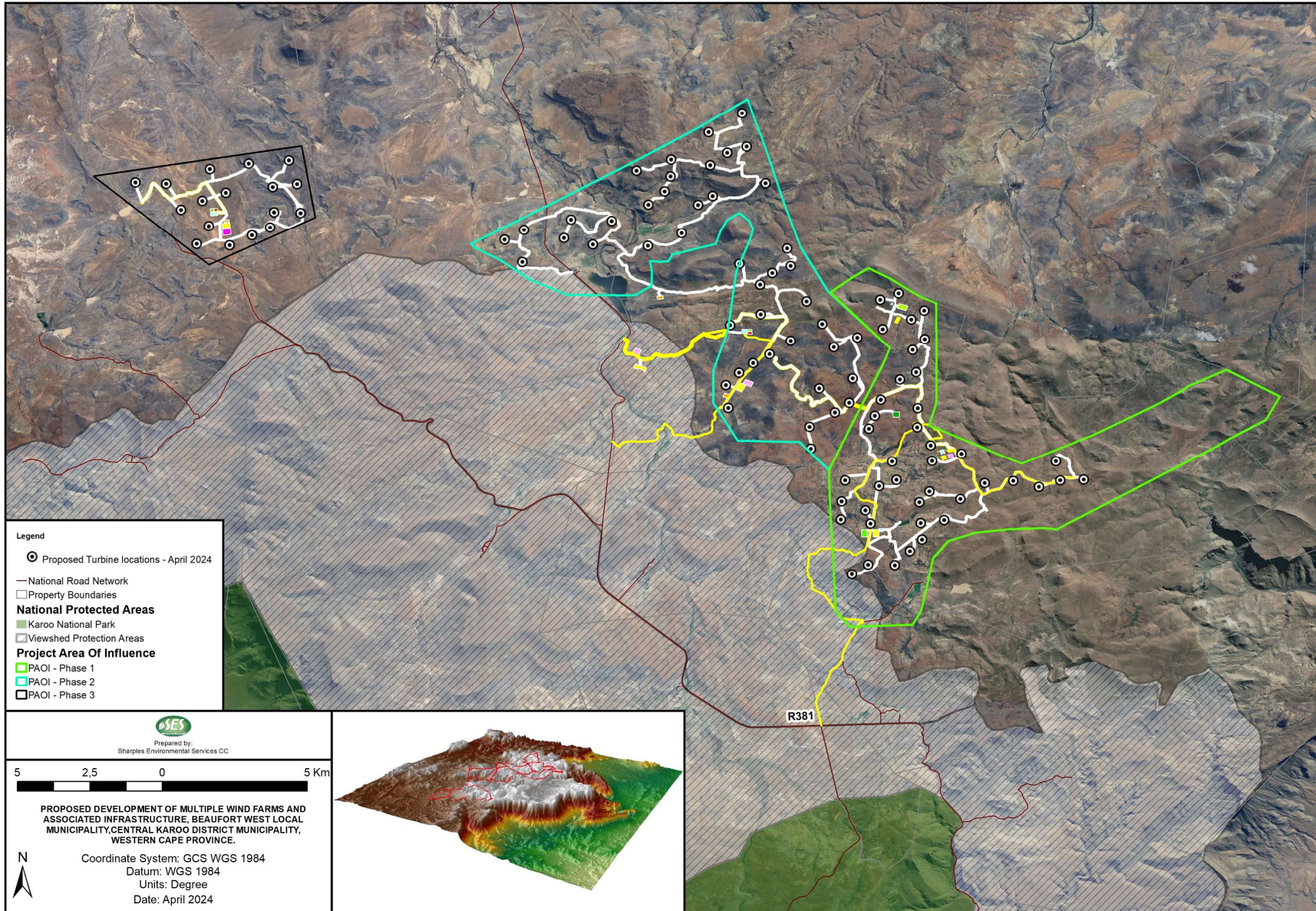


Amended PAOI and Turbine locations based on SANParks Viewshed and VERA Model





Proposed Infrastructure (following Specialist Inputs) in relation to the KNP Viewshed



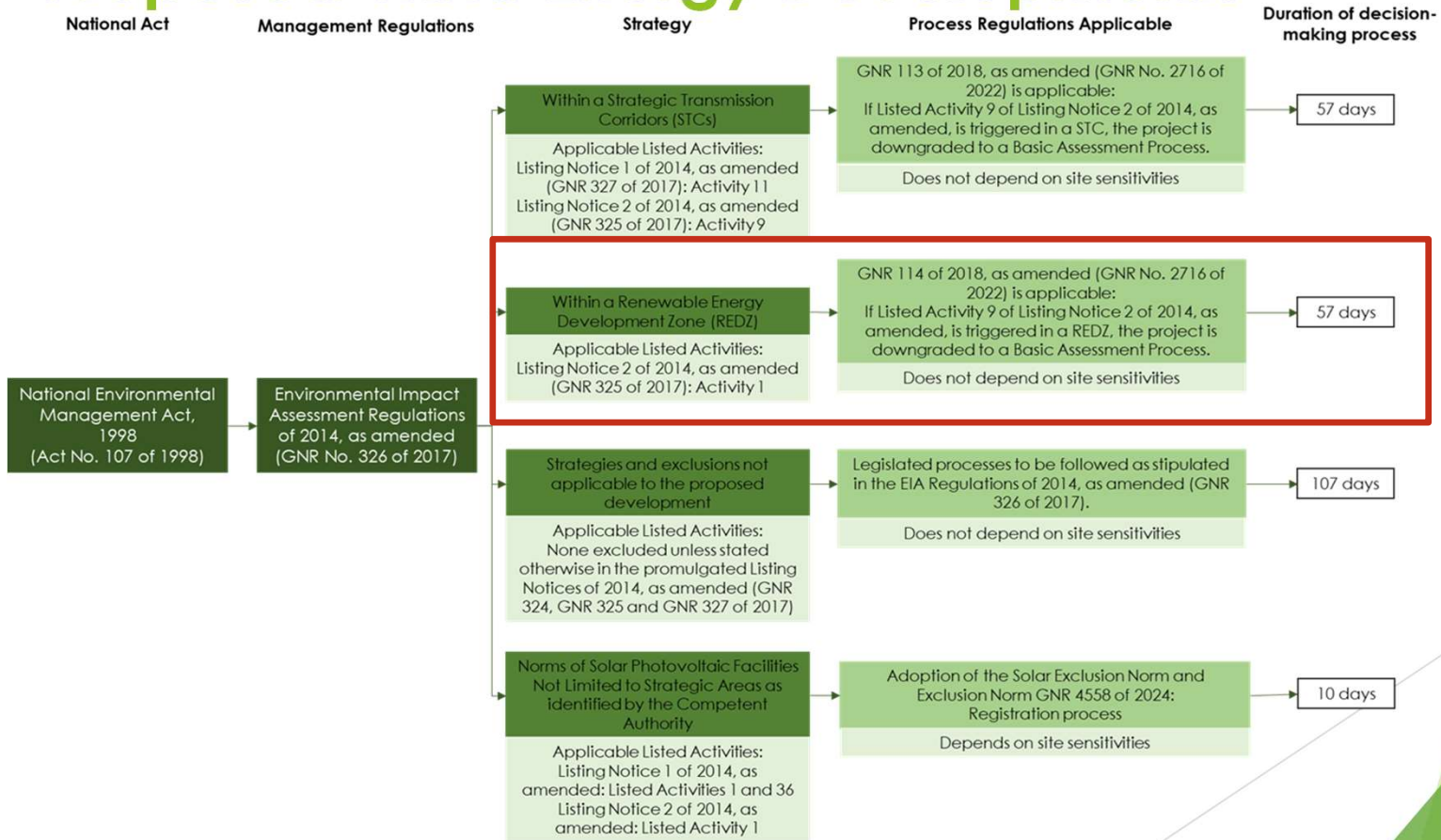


Legislative Requirements

- ▶ Applicable Legislation (processing):
 - ▶ Environmental Impact Assessment Regulations of 2014, as amended (GNR 326 of 2017) (DFFE):
 - ▶ Listing Notice 1 of 2014, as amended (GNR 327 of 2017);
 - ▶ Listed Activities 1, 11, 12, 14, 19, 24, 27 and 28.
 - ▶ Listing Notice 2 of 2014, as amended (GNR 325 of 2017);
 - ▶ Listed Activities 4, 12 and 14.
 - ▶ Listing Notice 3 of 2014, as amended (GNR 324 of 2017);
 - ▶ Listed Activities 1 and 15.
 - ▶ GNR 114 of 2018, as amended (Renewable Energy Development Zones)
 - ▶ National Water Act, 1998 (Act No. 36 of 1998) (DWS):
 - ▶ In terms of Section 21 (c) and (i) water uses
 - ▶ Civil Aviation Act, 2009 (Act No. 13 of 2009) (CAA):
 - ▶ A licence in terms of the Civil Aviation Regulations, 2011 will be required
 - ▶ A Re-zoning process will be required (BLM)



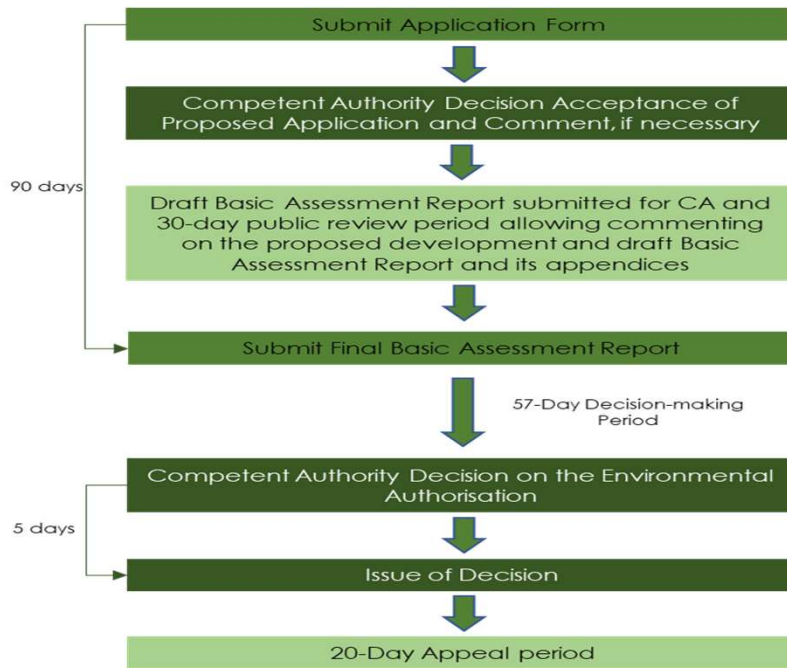
Strategies to be followed – Respective Proposed Wind Energy Developments





Process to be followed – Basic Assessment Process

- ▶ We are currently in the pre-application phase of the proposed developments.
- ▶ As the projects are located completely within the Beaufort West Renewable Energy Zone, as promulgated through GNR 114 of 2018, a shortened decision-making period will be pursued.





Stakeholders Identified as part of the Pre-Application Phase

- ▶ South Africa National Parks
- ▶ CapeNature
- ▶ DFFE: Biodiversity Directive
- ▶ Endangered Wildlife Trust:
 - ▶ Nama Karoo Coordinator
 - ▶ Birds of Prey Programme
 - ▶ Drylands Conservation Programme
 - ▶ Wildlife and Energy Programme
- ▶ Riverine Rabbit Group
- ▶ Wildlife and Environment Society of South Africa
- ▶ BirdLife South Africa

Additional concerns/Questions?

The background features abstract, overlapping geometric shapes in various shades of green, ranging from light lime to dark forest green. These shapes are primarily located on the right side of the slide, with some extending towards the center. The overall aesthetic is clean and modern.

THANK YOU

