

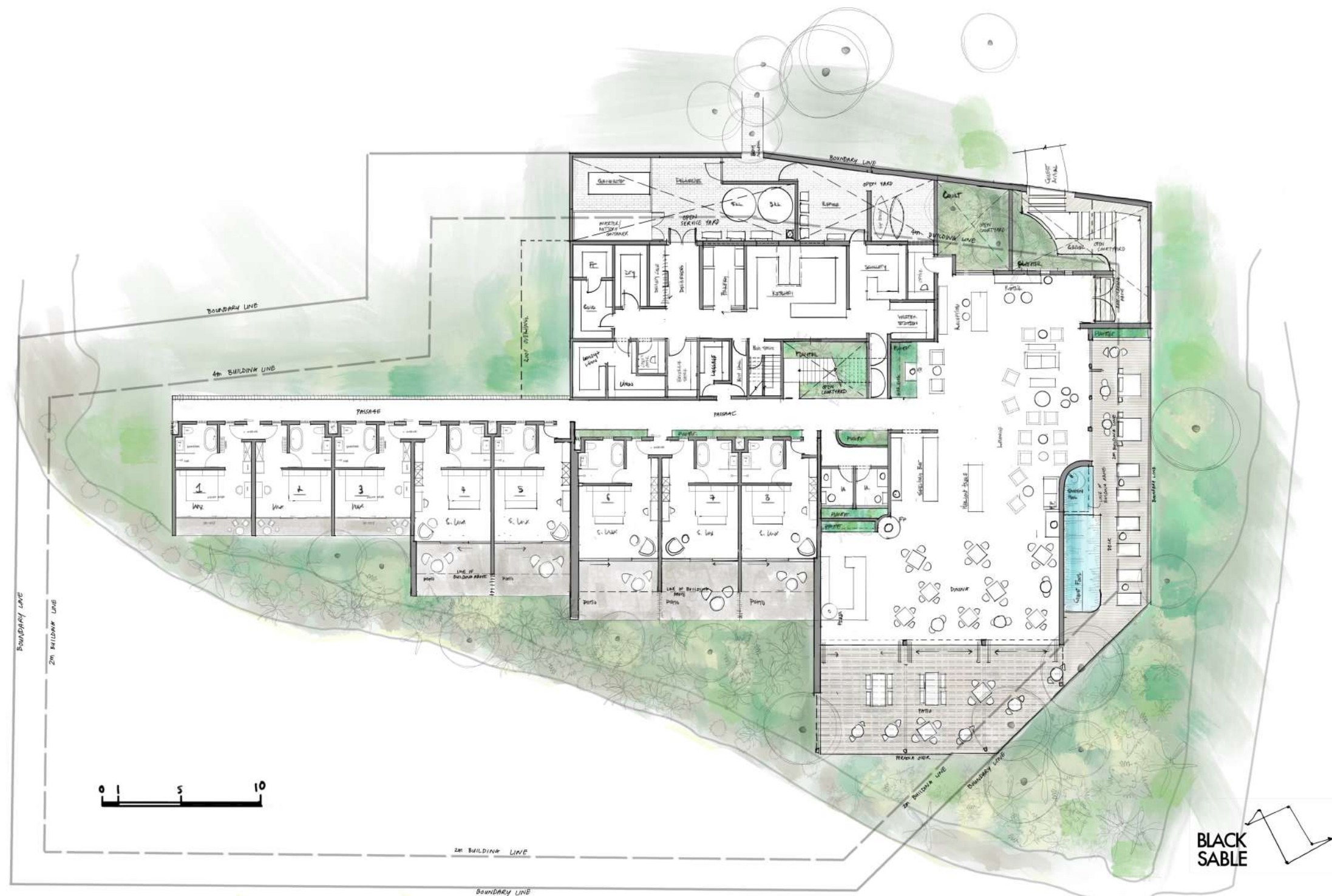
PARKING	
REQUIRED:	PROPOSED:
1.25 bays/bedroom	5 bays on site
24 bedrooms = 30 bays	27 bays off site
1/100m2 restaurant	
192m2 restaurant = 2 bays	
TOTAL = 32 bays	TOTAL = 32 bays

**BLACK
SABLE**



PUBLIC PARKING LAYOUT – OPTION A

*Not to scale - See Full SDP





FIRST FLOOR LAYOUT