



Company Registration No. 2025/774396/07



Tel: 072 126 6393
Email: joclyn@jfenvironmental.co.za
Website: JFenvironmental.co.za

ANNEXURE 1: PHOTOGRAPHIC EVIDENCE

The development of the Herolds Bay Country Estate on a portion of Portion 7 of the farm Buffelsfontein no. 204 in Herold's Bay, George Municipality, Western Cape.



Image 1:

Entrance to Herolds Bay Country Estate with controlled access to site.



Image 2:

Bulk internal service infrastructure (internal roads; water, sewer, electricity, reticulation and bulk storm water) have been installed.



Image 3:

Outdoor lighting has been installed.



Image 4:

Paved roads have been constructed.



Image 5:

Area for stockpiling.



Image 6:

Materials stored on site at stockpiling area.

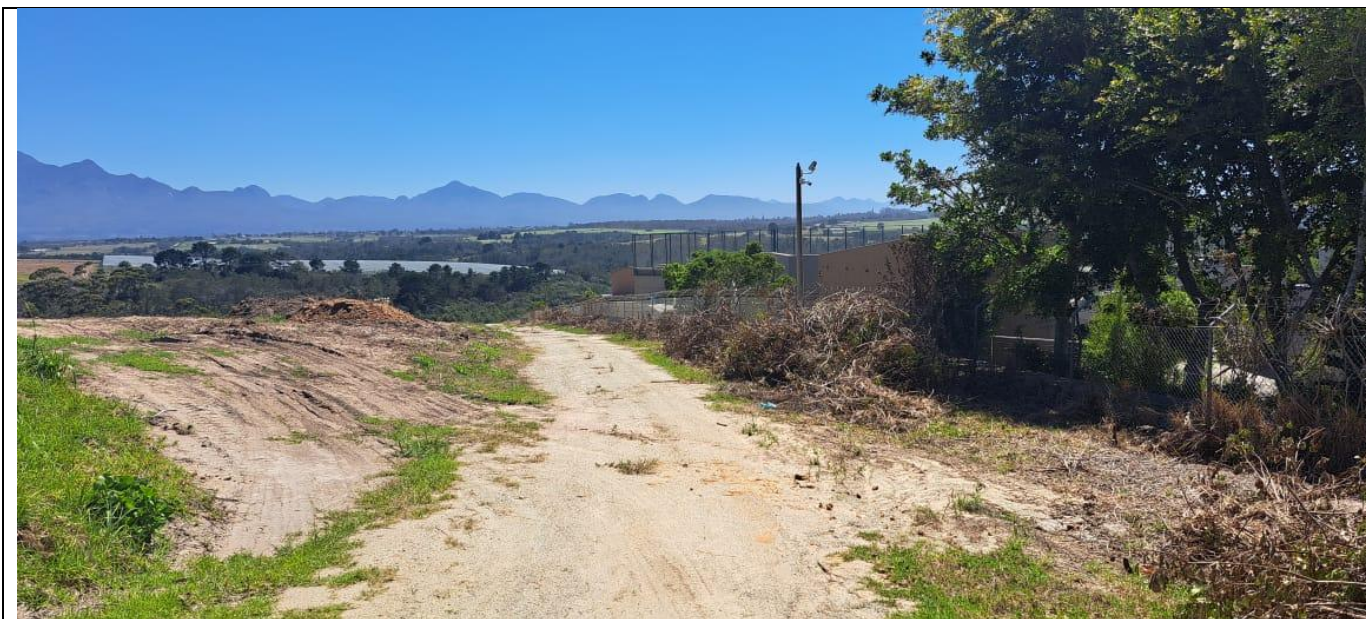


Image 7:

Removal of vegetation on the boundary of the development.



Image 8:

Stockpiling of excavated materials.



Image 9:

Stockpiled excavated materials and recently cut vegetation.



Image 10:

Erosion observed on sloping single track road.



Image 11:

Erosion observed on exposed slopes and roads.



Image 12:

Erosion observed on exposed slopes and roads.



Image 13:
Erosion observed on exposed slopes and roads. Runoff causing rills and formation of gullies (potential gully erosion).



Image 14:
Some vegetation regrowth on flat areas.

Figure 1:



Image 15:

Recent excavation observed for house foundations. Site is demarcated.



Image 16:

Recent excavation observed for house foundations. Site is demarcated.



Image 17:

Emerging black wattle and other invasive alien plants near wetland area.



Image 18:

Emerging alien invasive species observed across areas of the development site.

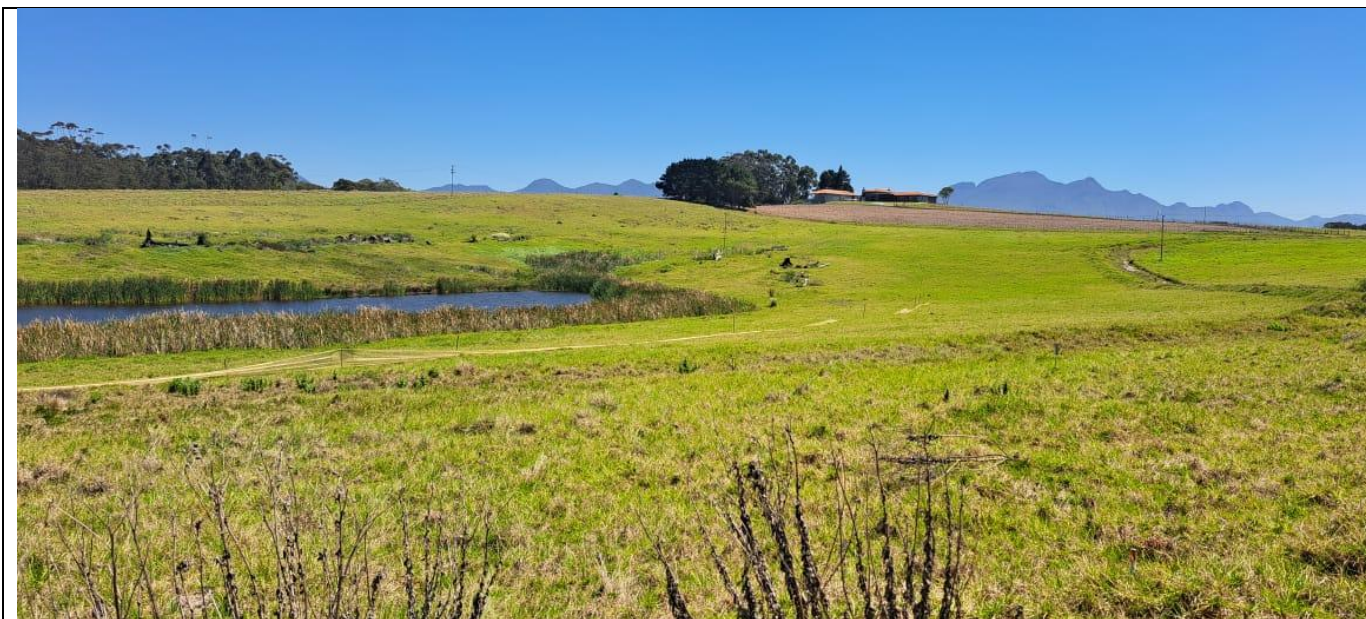


Image 19:
Wetland area demarcated with netting. The netting will need to be maintained once construction commences again.

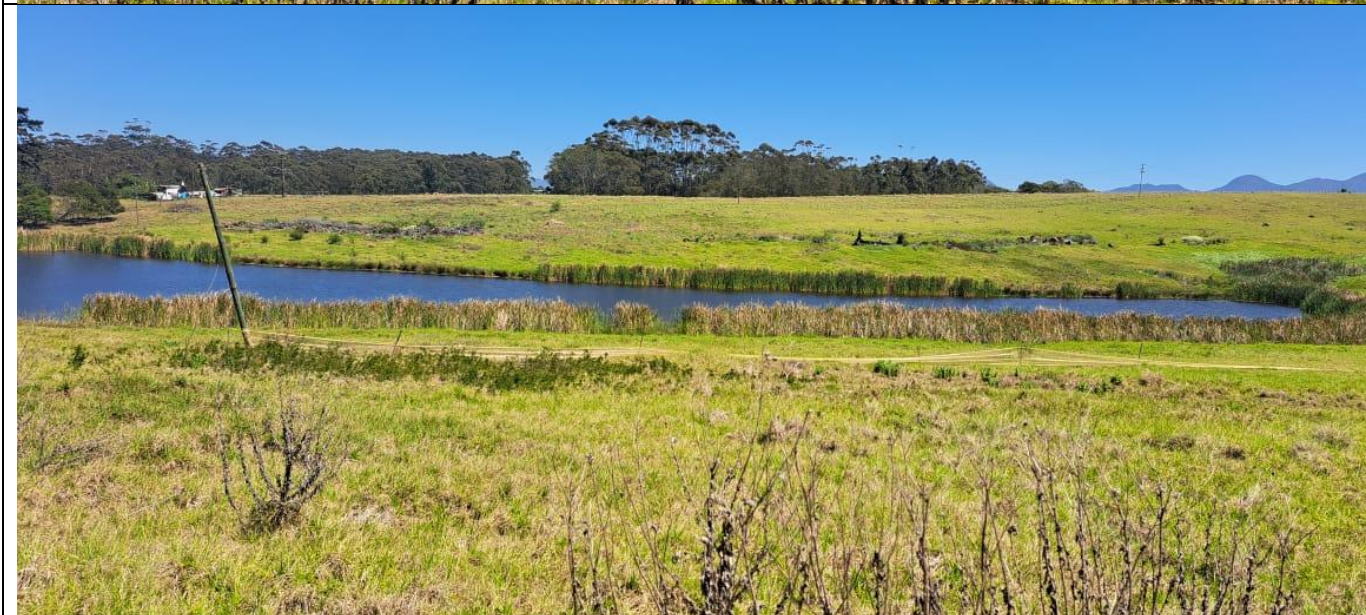


Image 20:
Wetland area demarcated with netting. The netting will need to be maintained once construction commences again.



Image 21:

Wetland tributary demarcated (proposed pond and stream). Netting needs maintenance when construction commences.



Image 22:

Erosion observed near the tributary (proposed pond and stream), which may contribute to siltation in the wetland if not addressed.



Image 23:

Runoff causing rills on exposed slopes.



Image 24:

Runoff causing rills on exposed slopes.



Image 25:

Vegetation has been mowed in development footprint.



Image 26:

Storage container on site.



Image 27:

Various items disposed of around the container.



Image 28:

Exposed surface with little vegetation cover.



Image 29:

Exposed surface with some vegetation cover.



Image 30:

Some measures put in place to address erosion.



Image 31:

Recent excavation observed for house foundations. Site is demarcated.



Image 32:

Recent excavation observed for house foundations. Site is not demarcated.



Image 33:

Emerging alien invasive species observed across areas of the development site.



Image 34:

Constructed guard house.



Image 35:
Constructed show house.



Image 36:
Housing for the package plant, pointed out by the ECO.