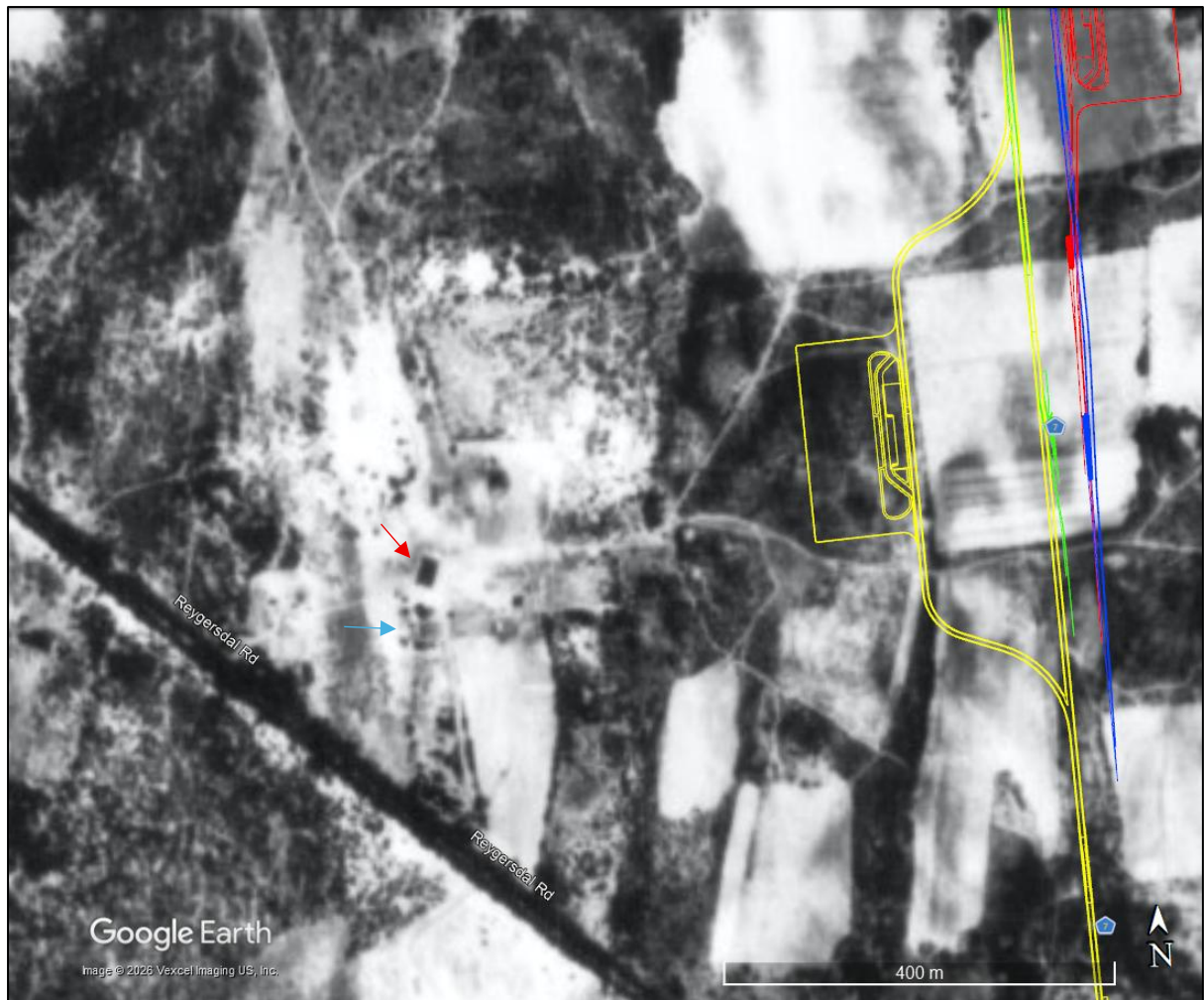


Heritage Findings for Alternative 6 and
Alternative 7:

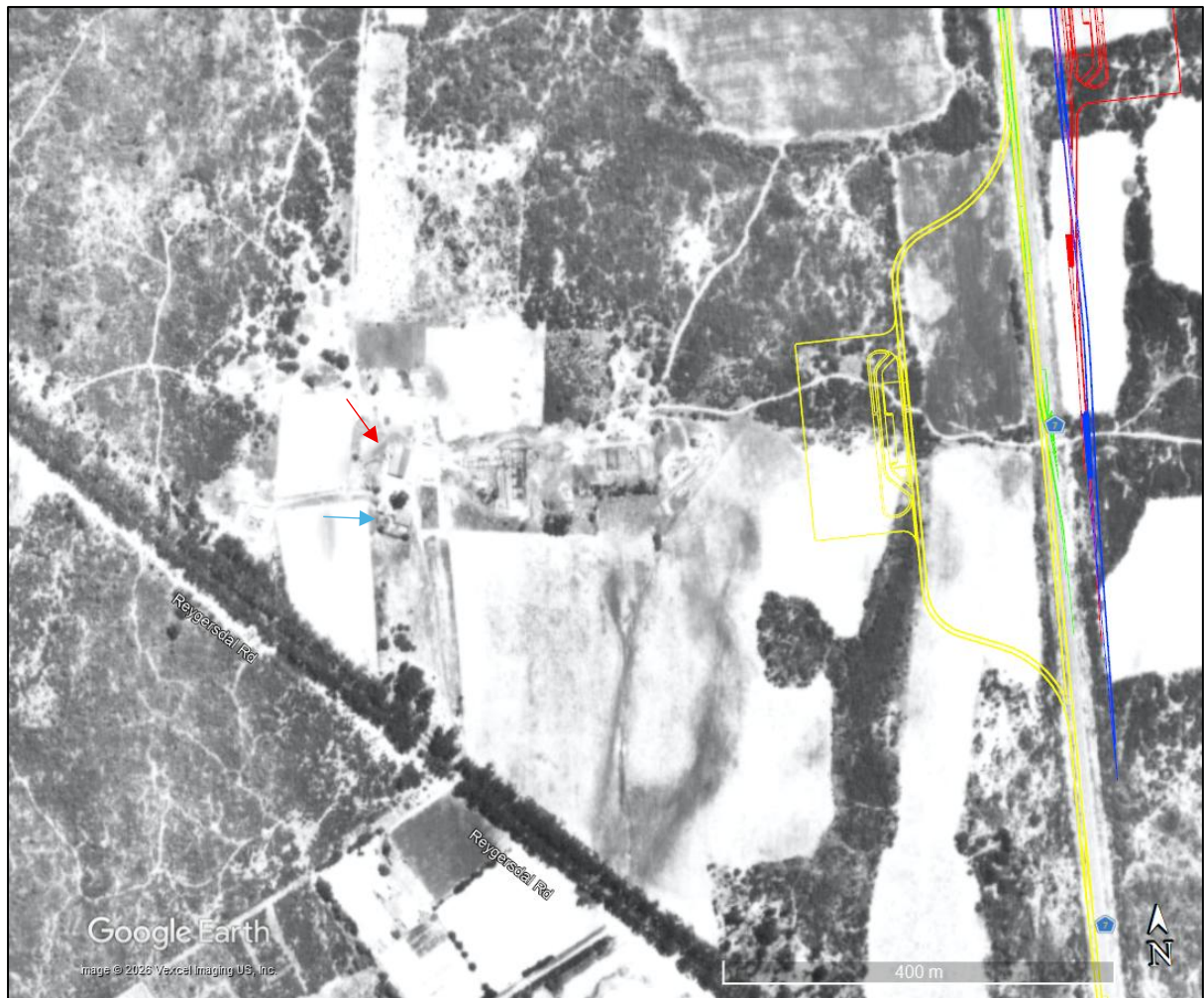
By Heritage Specialist: Jayson Orton of ASHA
Consulting



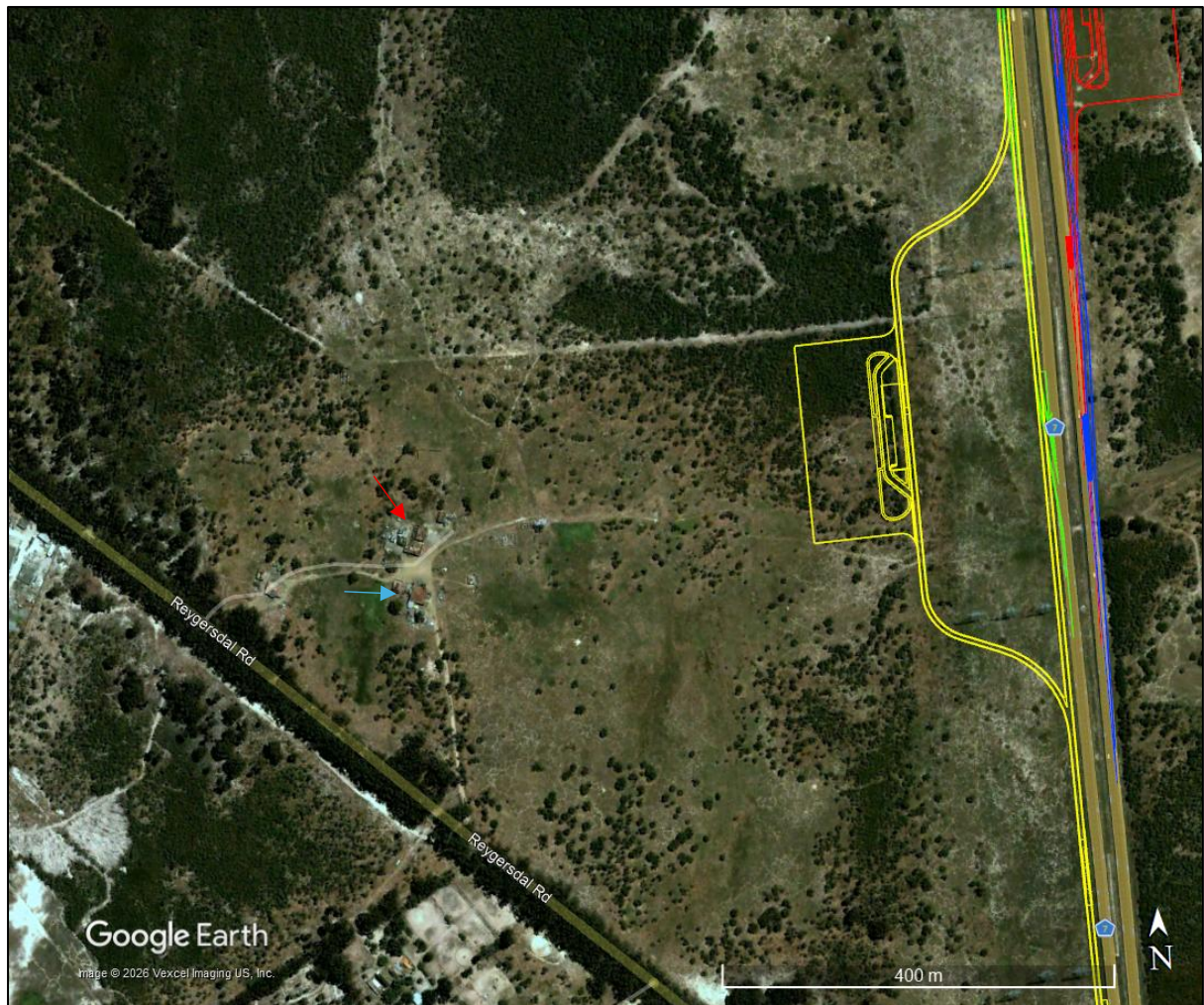
1938 aerial image showing a small farmstead just west of the proposed weighbridge Alternative 6. The red arrowed structure still survives. The blue arrowed structure was removed between 2004 and 2009.



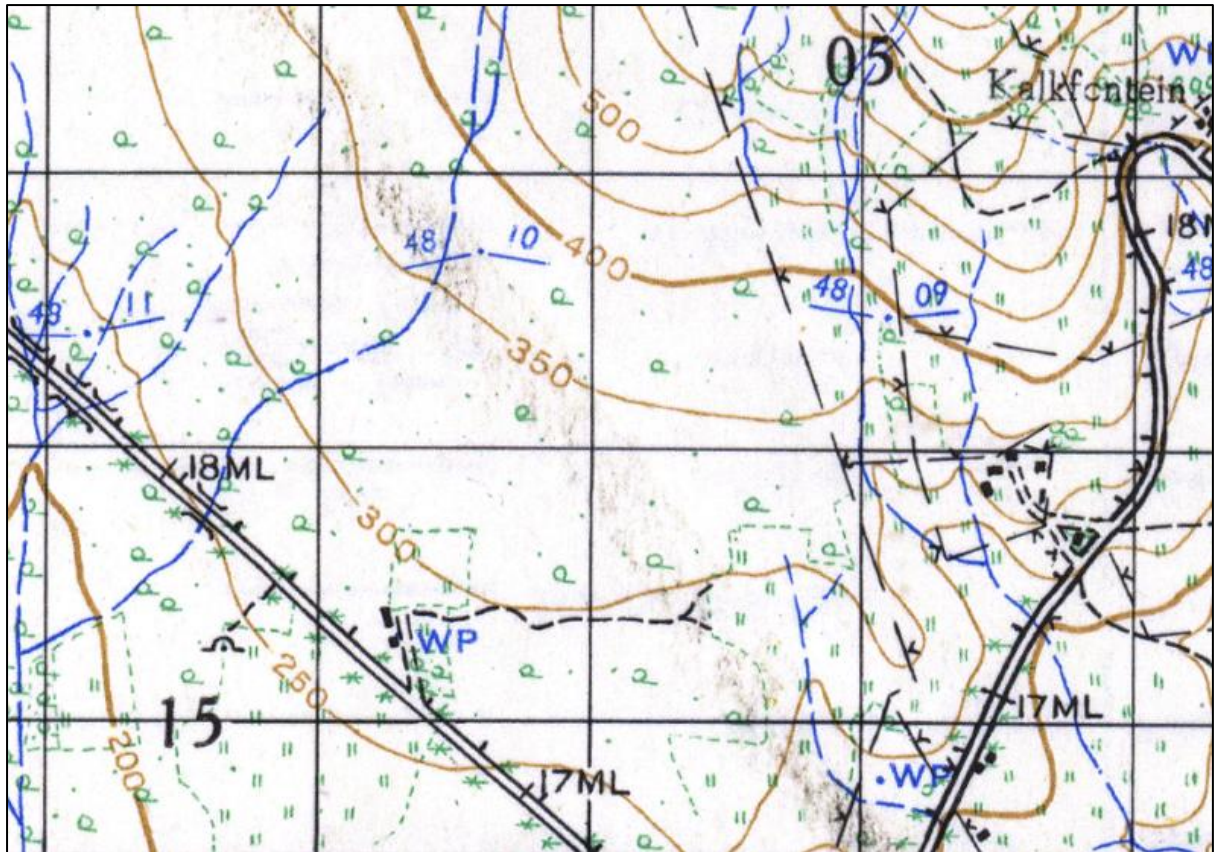
1953 aerial image showing a farmstead just west of the proposed weighbridge Alternative 6. The red arrowed structure still survives. The blue arrowed structure was removed between 2004 and 2009.



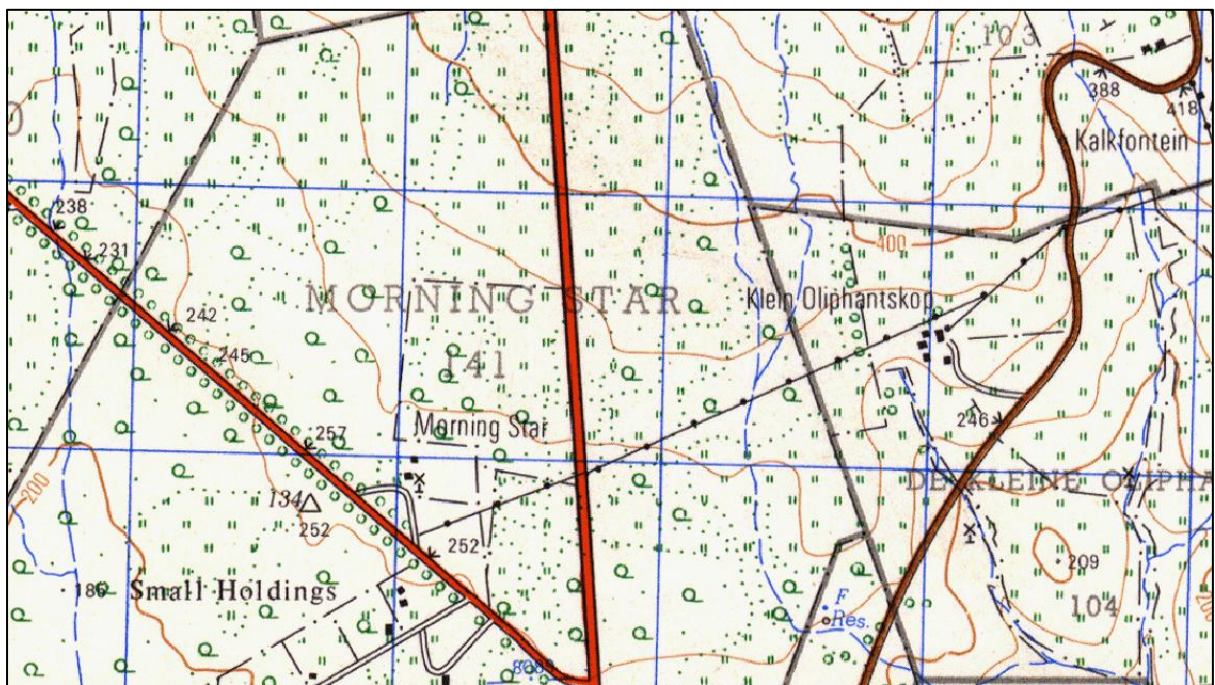
1968 aerial image showing a fairly well-developed farmstead just west of the proposed weighbridge Alternative 6. The red arrowed structure still survives. The blue arrowed structure was removed between 2004 and 2009.



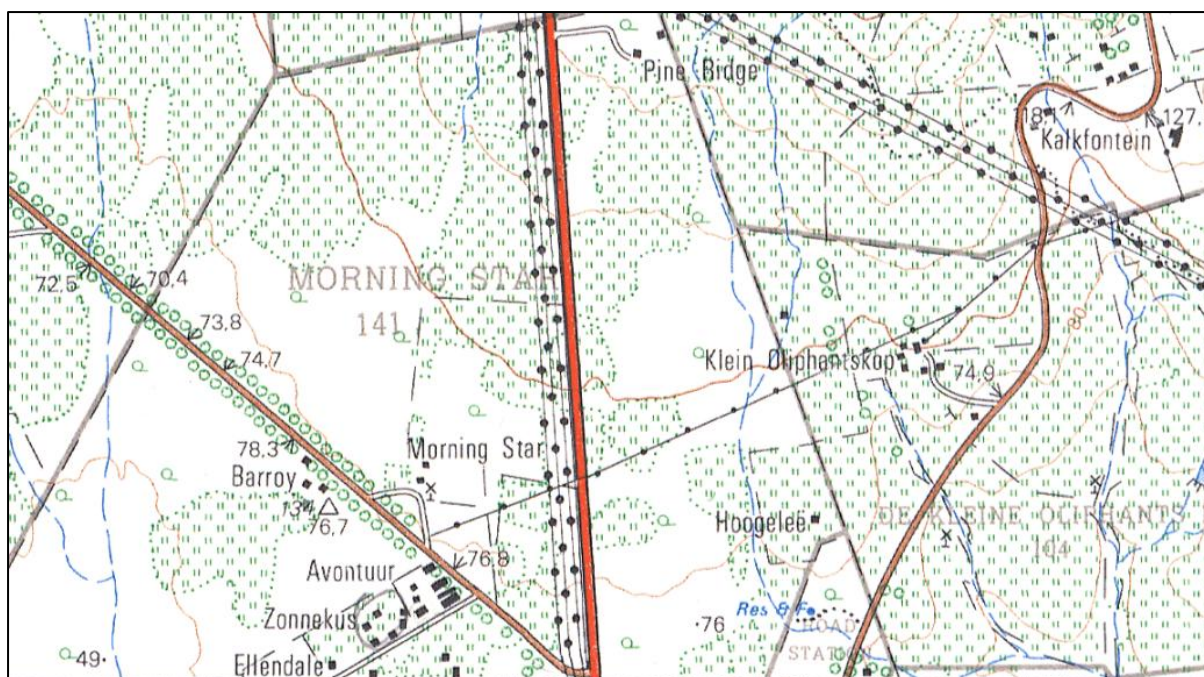
2002 aerial image showing no farmstead present, but a small settlement has developed a little further to the west. The red arrowed structure still survives. The blue arrowed structure was removed between 2004 and 2009.



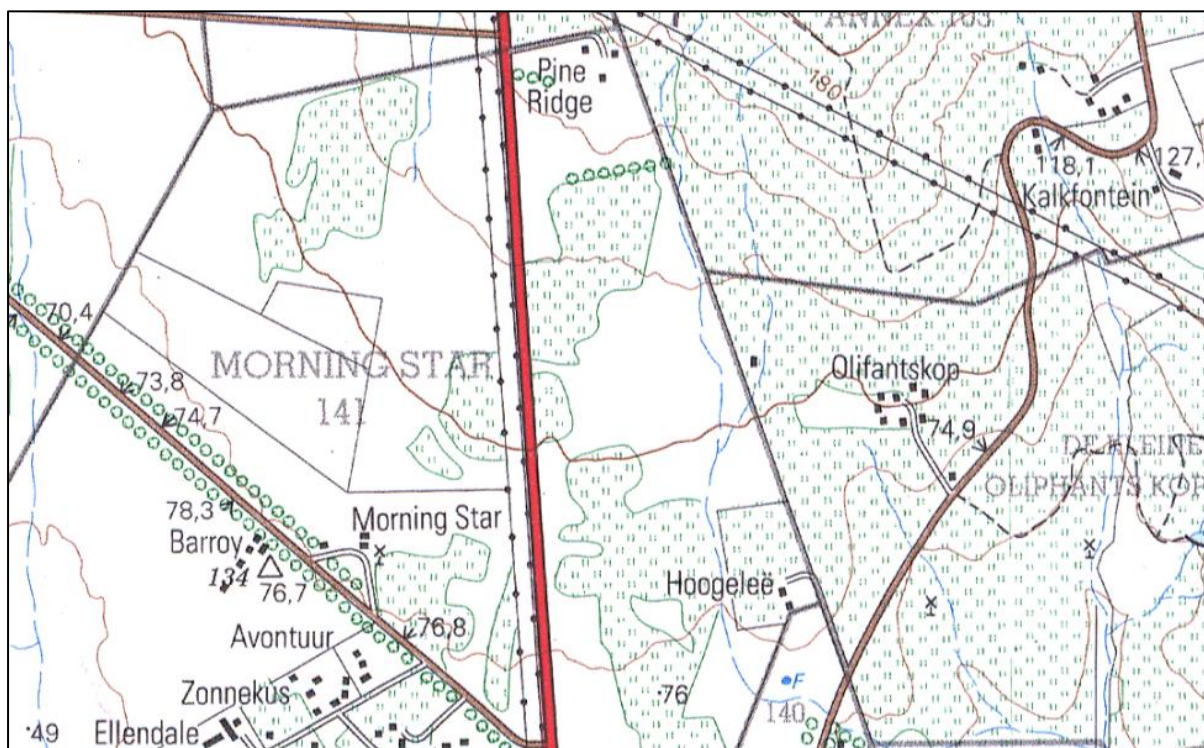
1942 1:50 000 topographic map showing a small farmstead but it is not named. A track leads eastwards towards where the glass and ceramics were found.



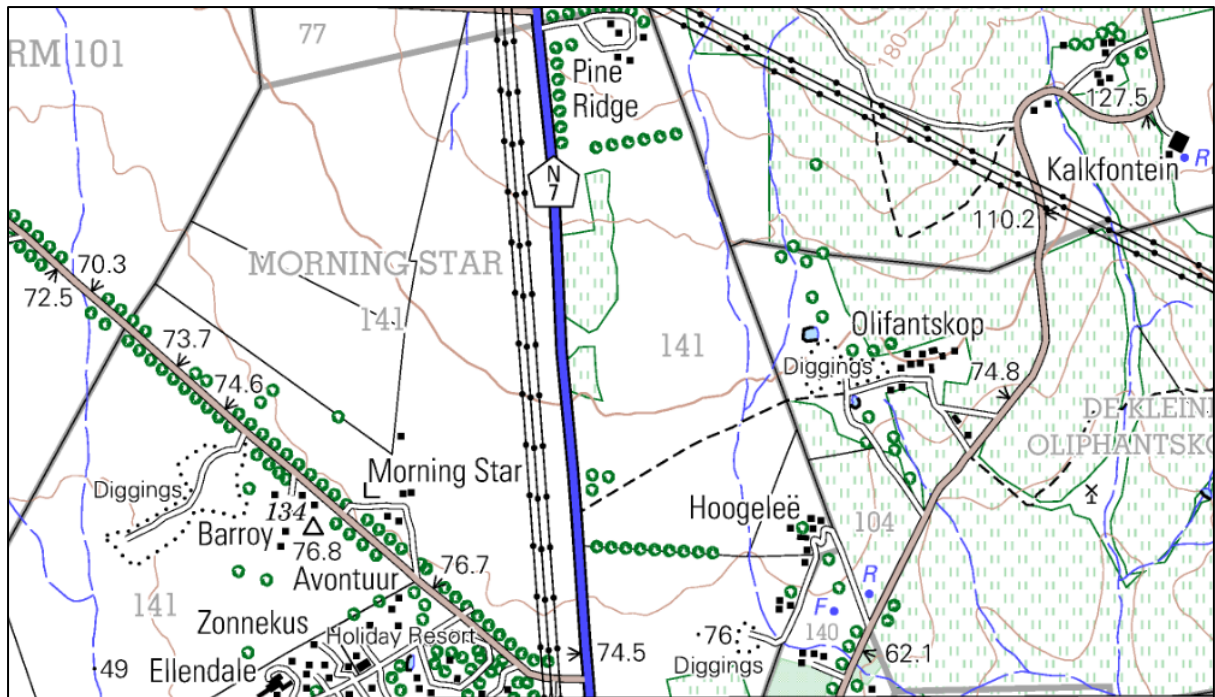
1966 1:50 000 topographic map naming the farmstead "Morning Star" and also showing the beginning of small holding development to the south. The N7 was already built, but aerial photography shows that it was only what is now the northbound carriageway.



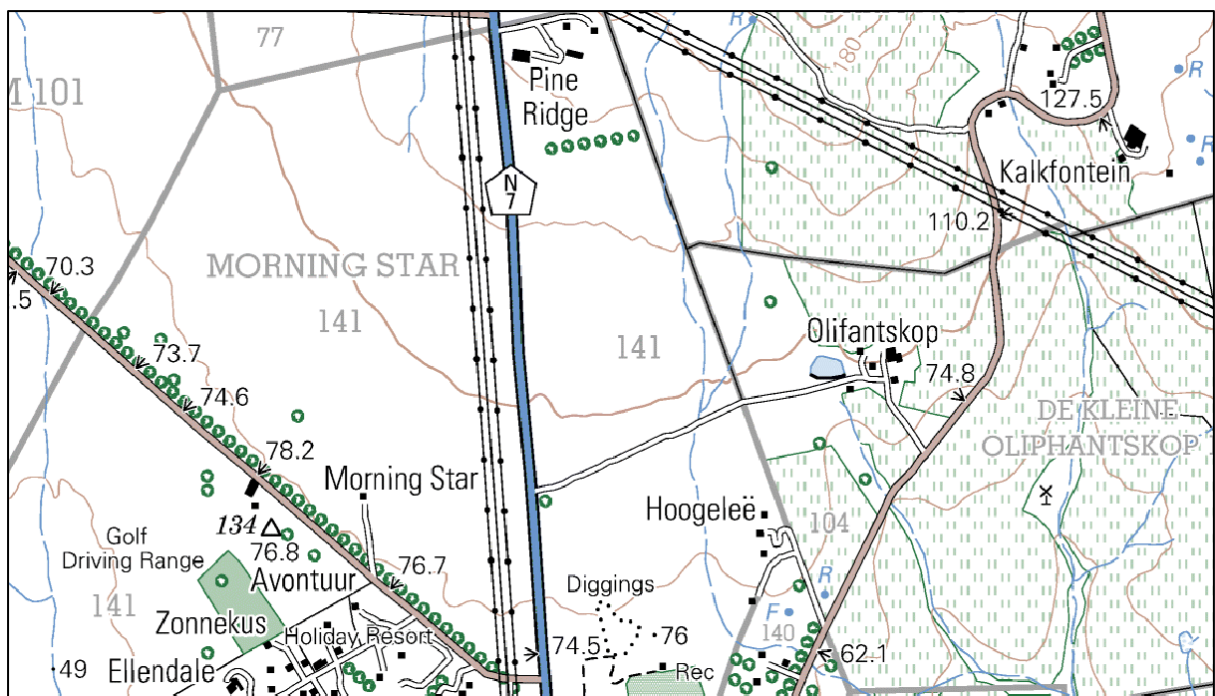
1980 1:50 000 topographic map showing the “Morning Star farmstead as well as the small holdings and large Eskom powerlines.



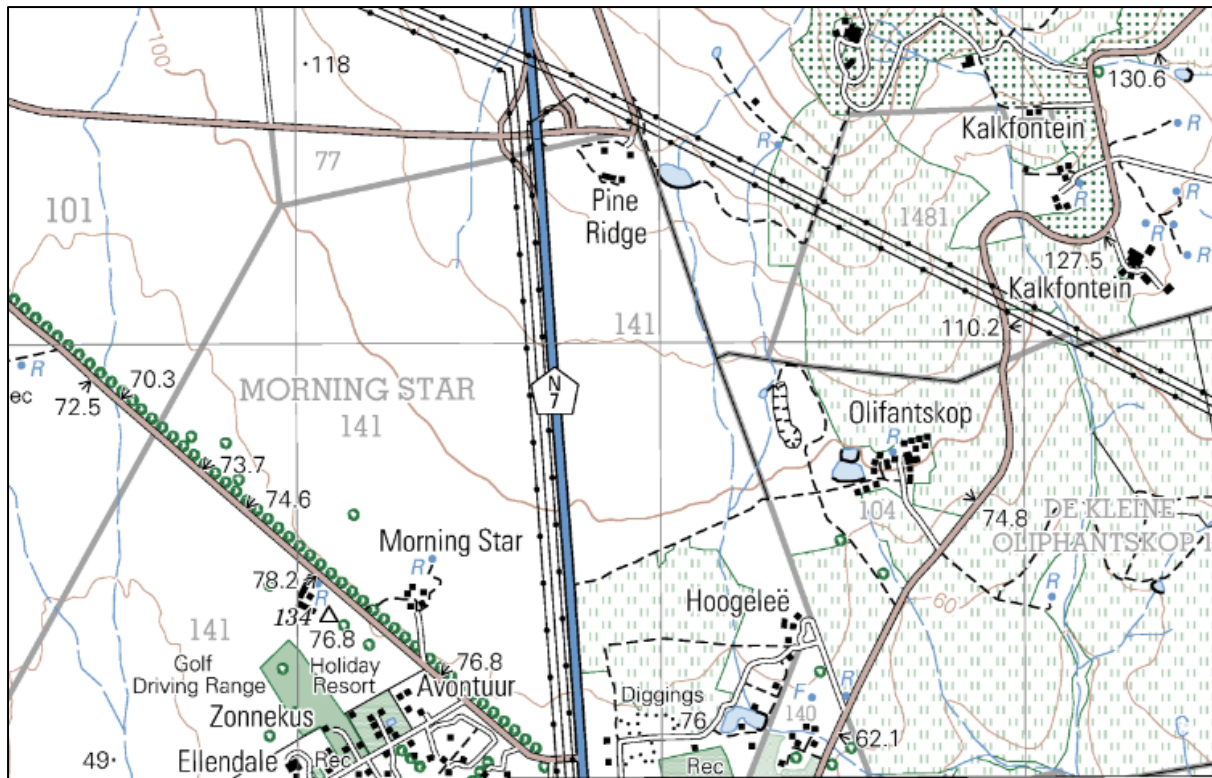
1992 1:50 000 topographic map showing the same as the 1980 map.



2000 1:50 000 topographic map showing no agricultural lands at Morning star.

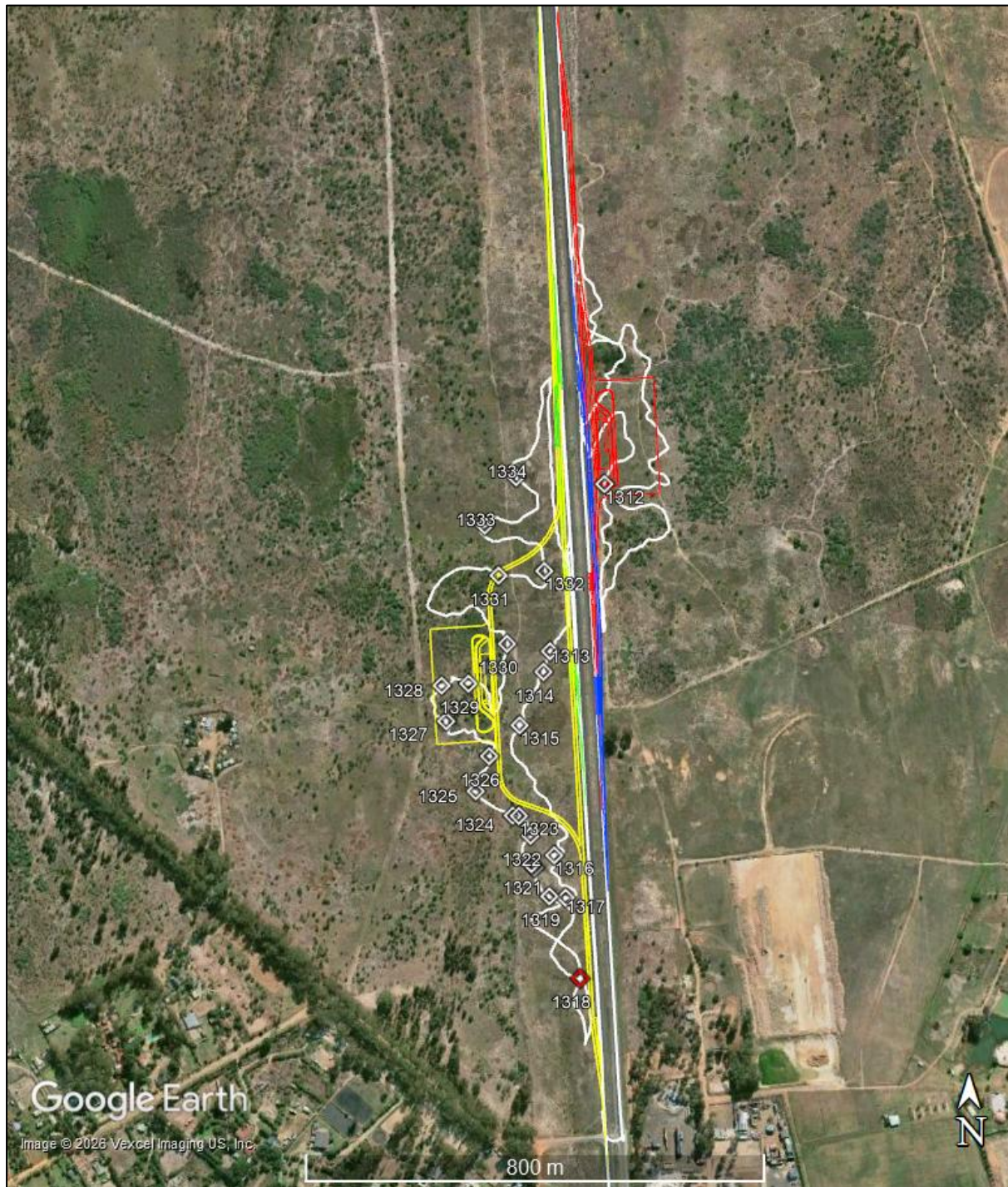


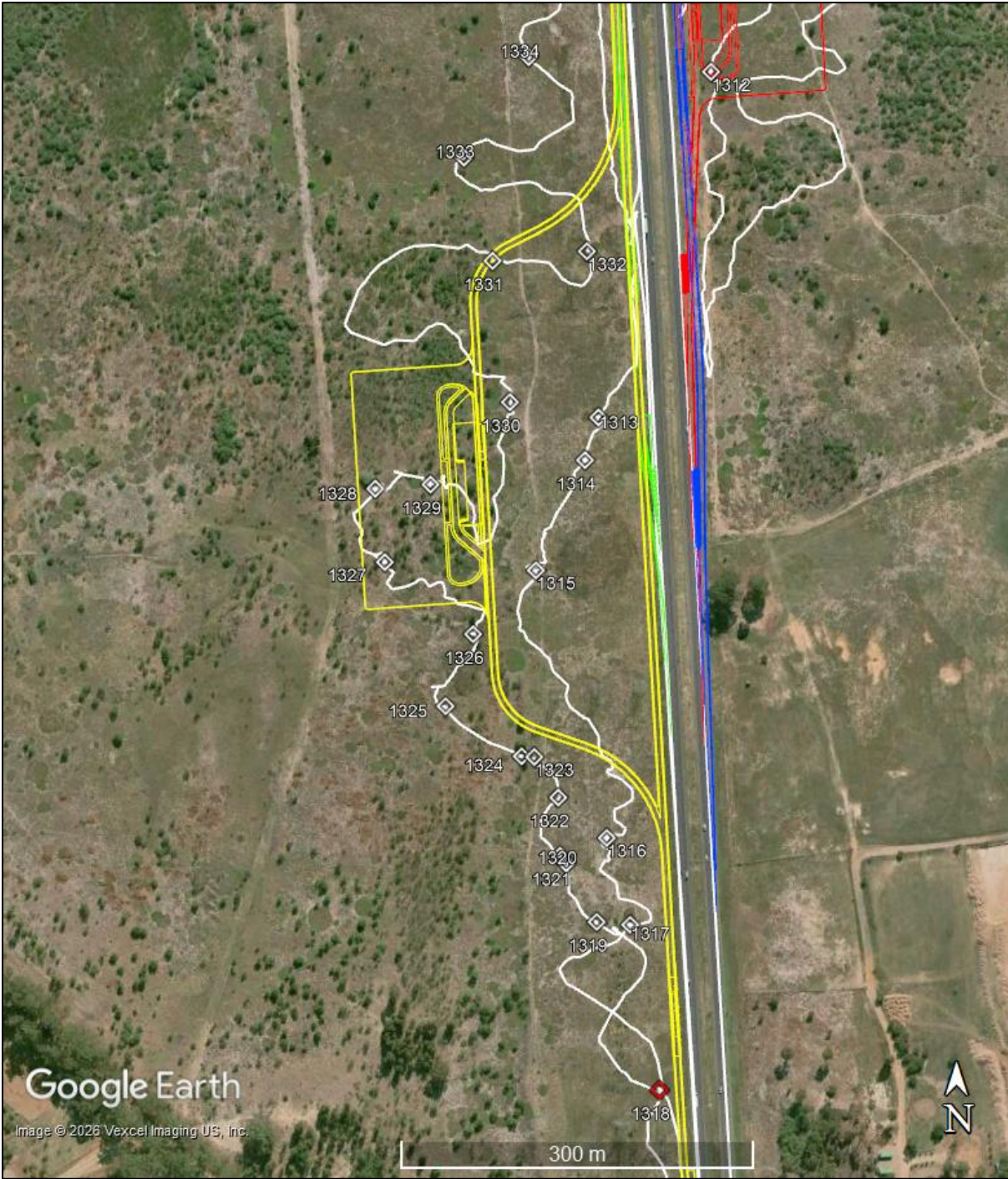
2000 1:50 000 topographic map showing just one structure at Morning Star.



2022 1:50 000 topographic map the small cluster of buildings that currently exists at the location of the Morning Star farmstead.



Mapping of survey tracks (white lines) and finds (numbered diamond symbols).
Alternative 6 is shown in yellow and blue, Alternative 7 in red and green.









Finds. Scale in cm.



Way-point	Location	Description and photographs
1312	S33 44 20.7 E18 32 45.8	<p>Two ceramic fragments a few meters apart. The smaller fragment has printing: 'North' on it.</p> 
1313	S33 44 30.0 E18 32 42.3	<p>Ceramic fragments, all white except the bottom left fragment which has a thin stripe printed.</p> 




Way-point	Location	Description and photographs
1314	S33 44 31.1 E18 32 41.8	<p>Ceramic fragments and one milk glass fragment. One ceramic fragment has printing: 'HMN'.</p> 
1315	S33 44 34.1 E18 32 40.3	<p>Ceramics fragments: white, lined, sponged, gilded and transfer printed. One fragment has lettering with a lion emblem that could be 'HM' and another fragment has '... Bennet's Paten...ppable surface __rslem...'. This could be Dunn Bennet & Co, Burslem from 1886 who made unchippable surface stoneware for use in hotels and on board ships from 1914 (https://www.thepotteries.org/allpotters/363.htm). There is also one piece of clear glass fragment.</p> 



Way-point	Location	Description and photographs
		
1316	S33 44 41.4 E18 32 42.7	<p>Ceramics of mostly white with one lined and four fragments with lettering printed on; and an oyster shell. The printed lettering looks to be: 'MA__VI__'; ' __ARE'; ' __Stone __Ennet & Co LTD __RSLEM. ENGLAND. _OTEL.' This could be Dunn Bennet & Co, Burslem from 1886. The crown mark was introduced 1887 and LTD after 1907 (https://www.thepotteries.org/mark/d/dunnbenn.html).</p> <p>'_tol __1652'. It could possibly be Bristol 1652 as seen in a similar looking fragment at waypoint 1317.</p> 

Way-point	Location	Description and photographs
		 <p>Four fragments of ceramic or paper are shown on a sandy surface. The fragments are white with black printed text. One fragment has 'VIT.' printed on it. Another fragment has 'STONE' printed on it. A third fragment has 'FINNETT & CO LTD' and 'BRISTOL' printed on it. A fourth fragment has 'col 1652' printed on it. A green ruler with black and white markings is placed below the fragments for scale.</p>
1317	S33 44 43.8 E18 32 43.5	<p>One piece of oyster shell and ceramic fragments: Transfer printed, lined, gilded and scalloped. The printed lettering: 'Bristol Founded 16__'. It could possibly be similar to a fragment found at waypoint 1316.</p>  <p>A collection of archaeological finds including a large, white, irregularly shaped oyster shell fragment and several smaller ceramic fragments. The ceramic fragments are white with black printed text and decorative patterns. One fragment has 'Bristol Founded 16__' printed on it. A green ruler with black and white markings is placed below the fragments for scale.</p>
1318	S33 44 48.3 E18 32 44.4	<p>A possible ferricrete flake.</p>  <p>Two photographs of a dark, elongated, and somewhat irregularly shaped object, identified as a possible ferricrete flake. The object is shown from two different angles, highlighting its dark, textured surface. A green ruler with black and white markings is placed below the object for scale.</p>

Way-point	Location	Description and photographs
1319	S33 44 43.7 E18 32 42.4	Four white ceramic fragments. No photograph.
1320	S33 44 42.1 E18 32 41.3	<p>A transfer printed ceramic fragment ('MALING MADE IN ENGLAND') and an oyster shell.</p> 
1321	S33 44 41.9 E18 32 41.1	<p>Three printed ceramic fragments: 'DUNN BEN__ BURNS__ MADE__'; Unclear, but last letter could be 'B'; Unclear, but some letters could be '__SEA__'.</p> 

1322	S33 44 40.3 E18 32 41.0	<p>Ceramic fragments that are lined and transfer printed. The printed lettering shows: 'DEL.... CHIN...MADE IN...'.</p> 
1323	S33 44 39.2 E18 32 40.3	<p>Ceramic fragment of which two are white and one is lined.</p> 
1324	S33 44 39.2 E18 32 39.9	<p>Ceramic fragments of which one has a grapevine motif and the others are white.</p> 

1325	S33 44 37.8 E18 32 37.4	<p>Ceramic fragments with transfer printing and whiteware. One fragment has the initials of HMN with a thistle motif; the other fragment has letters: ‘_OTEL CAPE TOWN ____US with a horse-like crest’. A more complete fragment like this is found at waypoint 1329.</p> 
1326	S33 44 35.8 E18 32 38.2	<p>An oyster shell fragment and ceramics, all white and one with a partial rose transfer print.</p> 
1327	S33 44 33.9 E18 32 35.3	<p>White ceramics.</p> 

1328	S33 44 31.9 E18 32 35.0	<p>The density of artefacts at this waypoint is much higher than the other waypoints spread across an area of about 60m and could possibly be part a site of similar density at waypoint 1329. Artefacts at both waypoints (1328 & 1329) include fragments of ceramics, glass, metal, oyster shell and faunal remains (fish and mammal). The 1st photo shows clear glass fragments and ceramic fragments: lined and white; and oyster shell. The 2nd photo shows oyster shell, clear glass, slipware, transfer printed, lined and white ceramics. The partial printed lettering on the one fragment shows the letters: '....STONE ...Co Ltd....LAND'.</p>  
1329	S33 44 31.8 E18 32 36.8	<p>The density of artefacts at this waypoint is much higher than the other waypoints spread across an area of about 60m and could possibly be part a site of similar density at waypoint 1328. Artefacts at both waypoints (1328 & 1329) include fragments of ceramics, glass, metal, oyster shell and faunal remains (fish and mammal). The 1st photo shows fragments of glass (clear, olive green, blue & brown); ceramics (white, lined & transfer printed). Letters printed of four of the pieces are shown in a close-up in the 2nd photo: '...SOUTH A.....'; '....ENGL....'; '....ENGLAND....'; '....HOTEL CAPE TOWN with a horse-like figure crest and the phrase SEMPER PARATUS under it'. The 3rd photo a few meters further away shows fragments of metal, transfer printed and white ceramics and oyster shell.</p>



1330	S33 44 29.6 E18 32 39.4	<p data-bbox="467 118 1409 185">An oyster shell, and fragments of glass (including the base of a wine glass) and ceramics (white and a blue- and brown-glazed stoneware)</p>   
1331	S33 44 25.8 E18 32 38.8	<p data-bbox="467 1630 922 1664">White and lined ceramic fragments.</p>

		
1332	S33 44 25.5 E18 32 41.8	<p>Oyster shell and ceramic fragments that are white, lined (the olive green lined has gilding), transfer printed and</p> 
1333	S33 44 23.0 E18 32 37.8	Two white ceramic fragments. No photograph.
1334	S33 44 20.3 E18 32 39.9	Two white ceramic fragments. No photograph.