

**SCREENING REPORT FOR AN ENVIRONMENTAL AUTHORIZATION AS
REQUIRED BY THE 2014 EIA REGULATIONS – PROPOSED SITE
ENVIRONMENTAL SENSITIVITY**

EIA Reference number: 16/3/3/1/A1/41/3042/25

Project name: The proposed N7 Weighbridge

Project title: .

Date screening report generated: 28/08/2025 09:35:22

Applicant: Western Cape Government: Department of Infrastructure

Compiler: SEScc

Compiler signature: 
.....

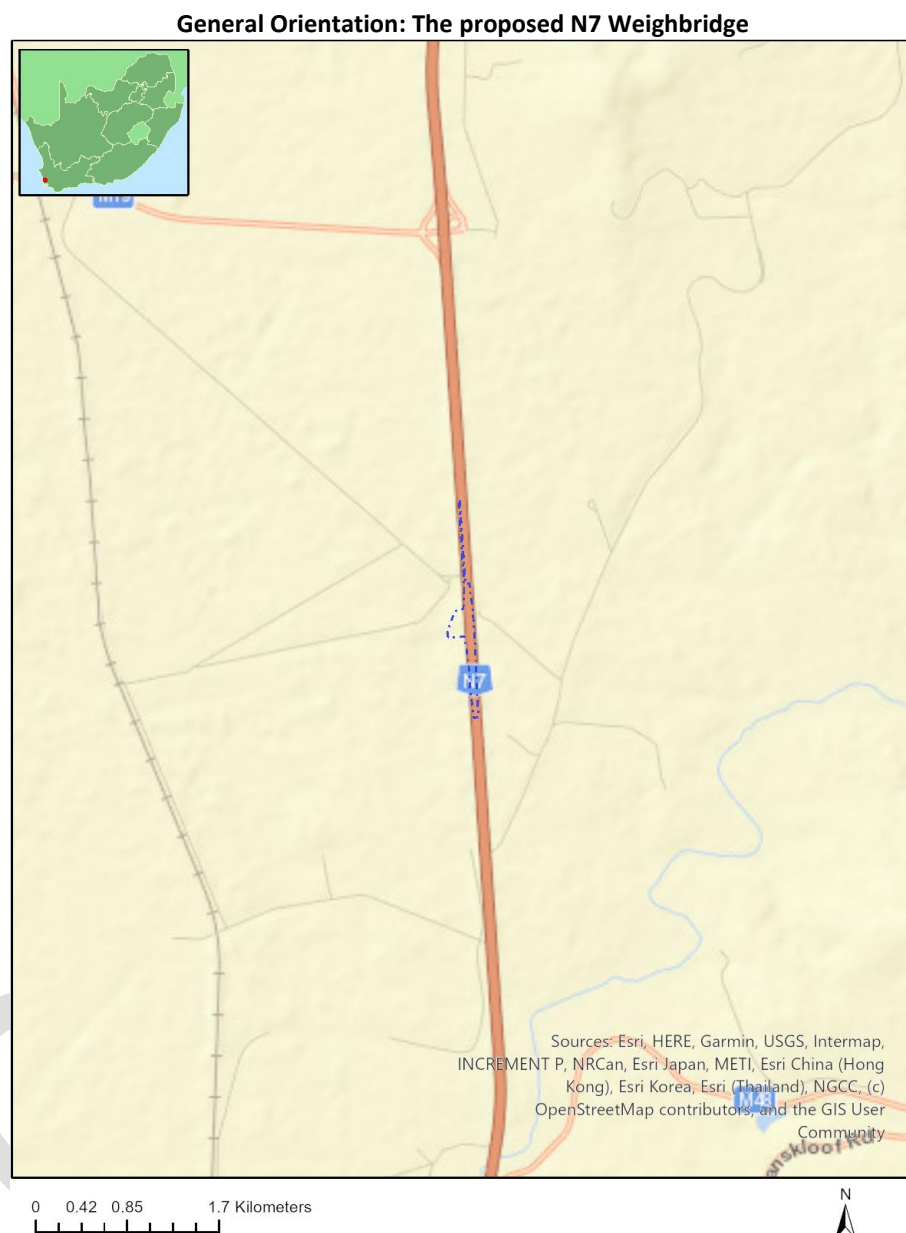
Application Category: Infrastructure | Transport Services | Roads | Public

Table of Contents

Proposed Project Location	3
Orientation map 1: General location	3
Map of proposed site and relevant area(s)	4
Cadastral details of the proposed site	4
Wind and Solar developments with an approved Environmental Authorisation or applications under consideration within 30 km of the proposed area	4
Environmental Management Frameworks relevant to the application	5
Environmental screening results and assessment outcomes	5
Relevant development incentives, restrictions, exclusions or prohibitions	5
Proposed Development Area Environmental Sensitivity	5
Specialist assessments identified	6
Results of the environmental sensitivity of the proposed area	8
MAP OF RELATIVE AGRICULTURE THEME SENSITIVITY	8
MAP OF RELATIVE ANIMAL SPECIES THEME SENSITIVITY	9
MAP OF RELATIVE AQUATIC BIODIVERSITY THEME SENSITIVITY	10
MAP OF RELATIVE ARCHAEOLOGICAL AND CULTURAL HERITAGE THEME SENSITIVITY	11
MAP OF RELATIVE CIVIL AVIATION THEME SENSITIVITY	12
MAP OF RELATIVE DEFENCE THEME SENSITIVITY	13
MAP OF RELATIVE PALEONTOLOGY THEME SENSITIVITY	14
MAP OF RELATIVE PLANT SPECIES THEME SENSITIVITY	15
MAP OF RELATIVE TERRESTRIAL BIODIVERSITY THEME SENSITIVITY	19

Proposed Project Location

Orientation map 1: General location



Map of proposed site and relevant area(s)



Cadastral details of the proposed site

Property details:

No	Farm Name	Farm/ Erf No	Portion	Latitude	Longitude	Property Type
1	VISSERSHOK OUTSPAN	153	0	33°45'57.84S	18°32'46.61E	Farm
2	MORNING STAR	141	0	33°44'31.35S	18°32'16.54E	Farm
3	MORNING STAR	141	0	33°44'11.59S	18°32'28.25E	Farm Portion
4	MORNING STAR	141	25	33°45'4.79S	18°32'41.49E	Farm Portion
5	MORNING STAR	141	0	33°44'13.12S	18°32'27.62E	Farm Portion
6	VISSERSHOK OUTSPAN	153	0	33°45'57.84S	18°32'46.61E	Farm Portion

Development footprint¹ vertices:

No development footprint(s) specified.

Wind and Solar developments with an approved Environmental Authorisation or applications under consideration within 30 km of the proposed area

No	EIA Reference	Classification	Status of	Distance from proposed
----	---------------	----------------	-----------	------------------------

¹ "development footprint", means the area within the site on which the development will take place and includes all ancillary developments for example roads, power lines, boundary walls, paving etc. which require vegetation clearance or which will be disturbed and for which the application has been submitted.

	No		application	area (km)
1	12/12/20/2109/AM2	Solar PV	Approved	21.5
2	12/12/20/2109	Solar PV	Approved	21.5
3	12/12/20/2638/AM2	Wind	Approved	26.5
4	12/12/20/2109/AM3	Solar PV	Approved	21.5
5	12/12/20/2638	Wind	Approved	26.5
6	12/12/20/2638/AM3	Wind	Approved	26.5
7	12/12/20/2109/AM1	Solar PV	Approved	21.5

Environmental Management Frameworks relevant to the application

No intersections with EMF areas found.

Environmental screening results and assessment outcomes

The following sections contain a summary of any development incentives, restrictions, exclusions or prohibitions that apply to the proposed development site as well as the most environmental sensitive features on the site based on the site sensitivity screening results for the application classification that was selected. The application classification selected for this report is:

Infrastructure | Transport Services | Roads | Public.

Relevant development incentives, restrictions, exclusions or prohibitions

The following development incentives, restrictions, exclusions or prohibitions and their implications that apply to this site are indicated below.

Incentive, restriction or prohibition	Implication
Strategic Transmission Corridor-Central corridor	https://screening.environment.gov.za/ScreeningDownloads/DevelopmentZones/Combined_EGI.pdf
Strategic Gas Pipeline Corridors-Phase 1a & 1b: Saldanha to Ankerlig and Saldanha to Mossel Bay	https://screening.environment.gov.za/ScreeningDownloads/DevelopmentZones/Combined_GAS.pdf
South African Conservation Areas	https://screening.environment.gov.za/ScreeningDownloads/DevelopmentZones/SACAD_OR_2025_Q1_Metadata.pdf

Proposed Development Area Environmental Sensitivity

The following summary of the development site environmental sensitivities is identified. Only the highest environmental sensitivity is indicated. The footprint environmental sensitivities for the proposed development footprint as identified, are indicative only and must be verified on site by a suitably qualified person before the specialist assessments identified below can be confirmed.

Theme	Very High sensitivity	High sensitivity	Medium sensitivity	Low sensitivity
Agriculture Theme		X		
Animal Species Theme		X		
Aquatic Biodiversity Theme				X

Archaeological and Cultural Heritage Theme				X
Civil Aviation Theme		X		
Defence Theme			X	
Paleontology Theme				X
Plant Species Theme		X		
Terrestrial Biodiversity Theme	X			

Specialist assessments identified

Based on the selected classification, and the known impacts associated with the proposed development, the following list of specialist assessments have been identified for inclusion in the assessment report. It is the responsibility of the EAP to confirm this list and to motivate in the assessment report, the reason for not including any of the identified specialist study including the provision of photographic evidence of the site situation.

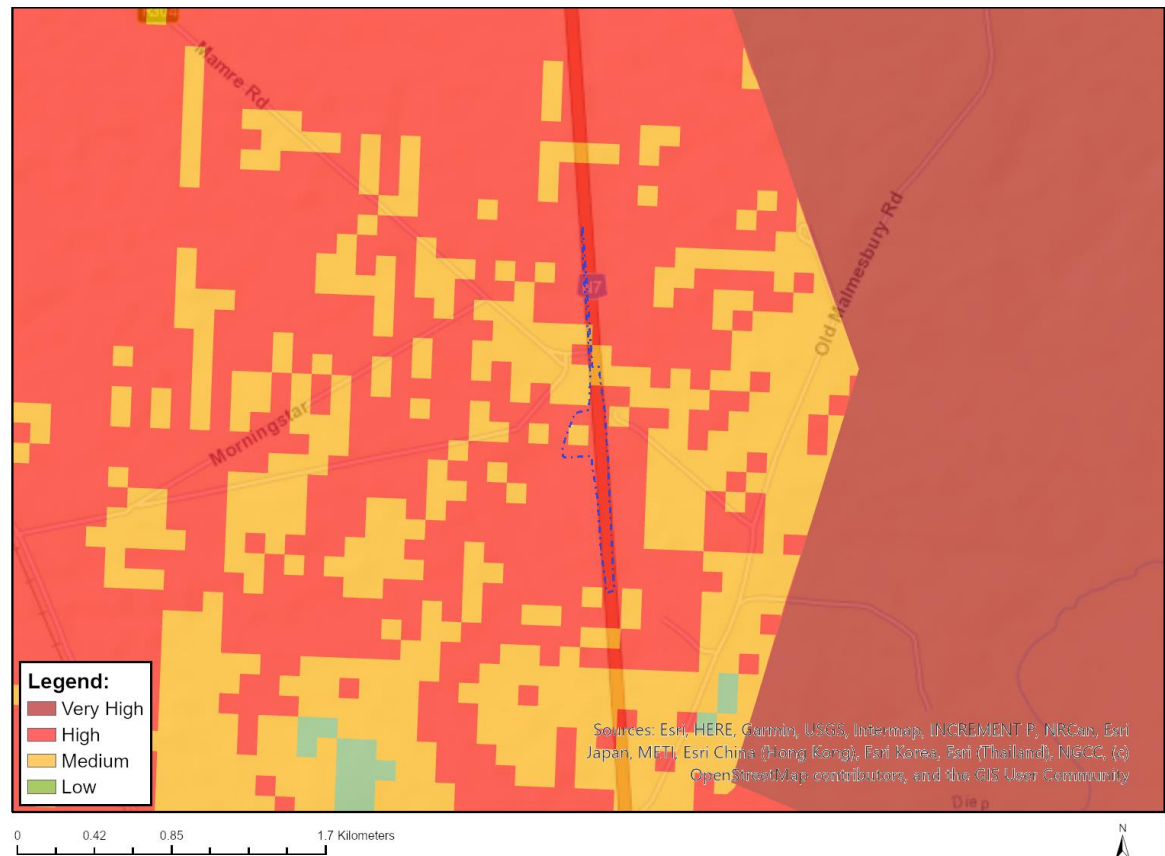
No	Specialist assessment	Assessment Protocol
1	Agricultural Impact Assessment	https://screening.environment.gov.za/ScreeningDownloads/AssessmentProtocols/Gazetted_General_Agriculture_Assessment_Protocols.pdf
2	Landscape/Visual Impact Assessment	https://screening.environment.gov.za/ScreeningDownloads/AssessmentProtocols/Gazetted_General_Requirement_Assessment_Protocols.pdf
3	Archaeological and Cultural Heritage Impact Assessment	https://screening.environment.gov.za/ScreeningDownloads/AssessmentProtocols/GuidanceforHIA.pdf
4	Palaeontology Impact Assessment	https://screening.environment.gov.za/ScreeningDownloads/AssessmentProtocols/GuidanceforPIA.pdf
5	Terrestrial Biodiversity Impact Assessment	https://screening.environment.gov.za/ScreeningDownloads/AssessmentProtocols/Gazetted_Terrestrial_Biodiversity_Assessment_Protocols.pdf
6	Aquatic Biodiversity Impact Assessment	https://screening.environment.gov.za/ScreeningDownloads/AssessmentProtocols/Gazetted_Aquatic_Biodiversity_Assessment_Protocols.pdf
7	Noise Impact Assessment	https://screening.environment.gov.za/ScreeningDownloads/AssessmentProtocols/Gazetted_Noise_Impacts_Assessment_Protocol.pdf
8	Traffic Impact Assessment	https://screening.environment.gov.za/ScreeningDownloads/AssessmentProtocols/Gazetted_General_Requirement_Assessment_Protocols.pdf
9	Geotechnical Assessment	https://screening.environment.gov.za/ScreeningDownloads/AssessmentProtocols/Gazetted_General_Requirement_Assessment_Protocols.pdf
10	Socio-Economic Assessment	https://screening.environment.gov.za/ScreeningDownloads/AssessmentProtocols/Gazetted_General_Requirement_Assessment_Protocols.pdf
11	Ambient Air Quality Impact Assessment	https://screening.environment.gov.za/ScreeningDownloads/AssessmentProtocols/Gazetted_General_Requirement_Assessment_Protocols.pdf
12	Plant Species Assessment	https://screening.environment.gov.za/ScreeningDownloads/AssessmentProtocols/Gazetted_Plant_Species_Assessment_Protocols.pdf

		pdf
13	Animal Species Assessment	https://screening.environment.gov.za/ScreeningDownloads/AssessmentProtocols/Gazetted Animal Species Assessment Protocols.pdf

Results of the environmental sensitivity of the proposed area.

The following section represents the results of the screening for environmental sensitivity of the proposed site for relevant environmental themes associated with the project classification. It is the duty of the EAP to ensure that the environmental themes provided by the screening tool are comprehensive and complete for the project. Refer to the disclaimer.

MAP OF RELATIVE AGRICULTURE THEME SENSITIVITY

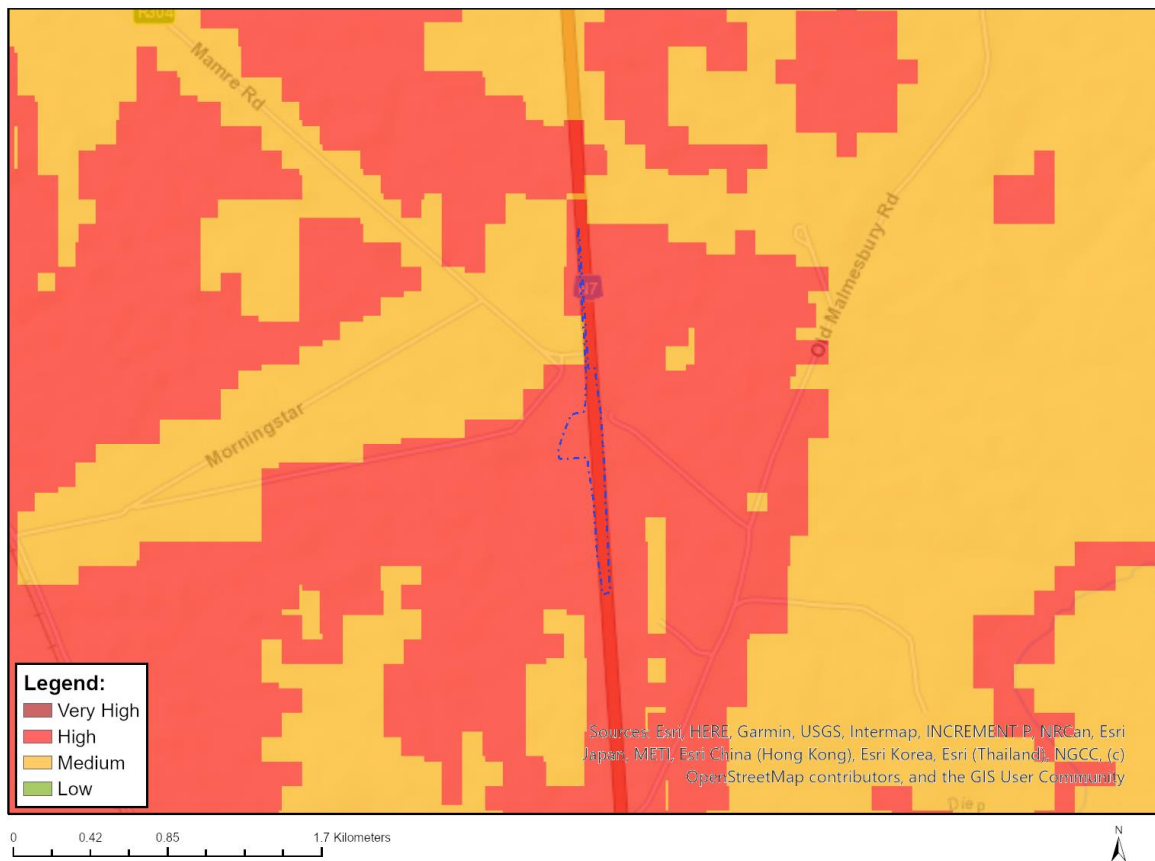


Very High sensitivity	High sensitivity	Medium sensitivity	Low sensitivity
	X		

Sensitivity Features:

Sensitivity	Feature(s)
High	08. Moderate
High	09. Moderate-High
Medium	07. Low-Moderate

MAP OF RELATIVE ANIMAL SPECIES THEME SENSITIVITY



Where only a sensitive plant unique number or sensitive animal unique number is provided in the screening report and an assessment is required, the environmental assessment practitioner (EAP) or specialist is required to email SANBI at eiadatarequests@sanbi.org.za listing all sensitive species with their unique identifiers for which information is required. The name has been withheld as the species may be prone to illegal harvesting and must be protected. SANBI will release the actual species name after the details of the EAP or specialist have been documented.

Very High sensitivity	High sensitivity	Medium sensitivity	Low sensitivity
	X		

Sensitivity Features:

Sensitivity	Feature(s)
High	Aves-Circus ranivorus
High	Aves-Circus maurus
High	Aves-Polemaetus bellicosus
Medium	Aves-Afrodis afra
Medium	Invertebrate-Pachysoma aesculapius
Medium	Invertebrate-Bullacris obliqua

MAP OF RELATIVE AQUATIC BIODIVERSITY THEME SENSITIVITY

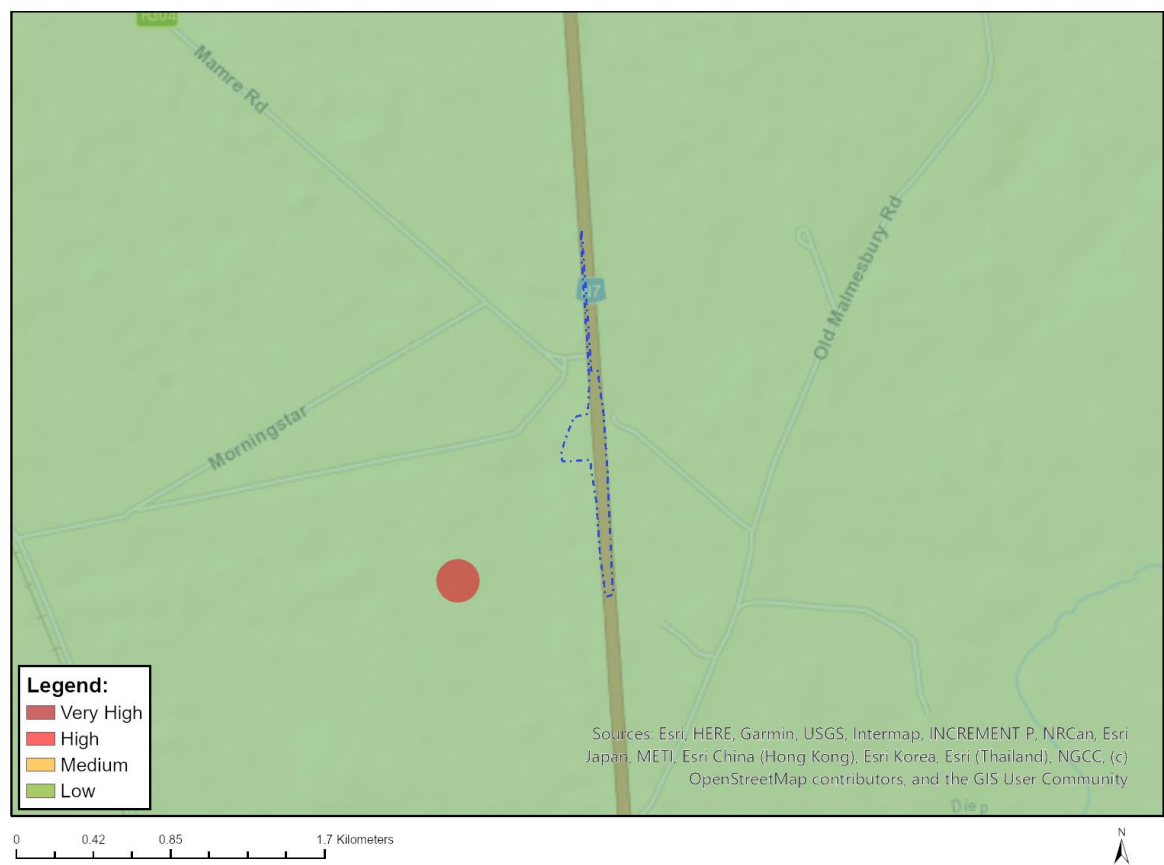


Very High sensitivity	High sensitivity	Medium sensitivity	Low sensitivity
			X

Sensitivity Features:

Sensitivity	Feature(s)
Low	Low Sensitivity

MAP OF RELATIVE ARCHAEOLOGICAL AND CULTURAL HERITAGE THEME SENSITIVITY

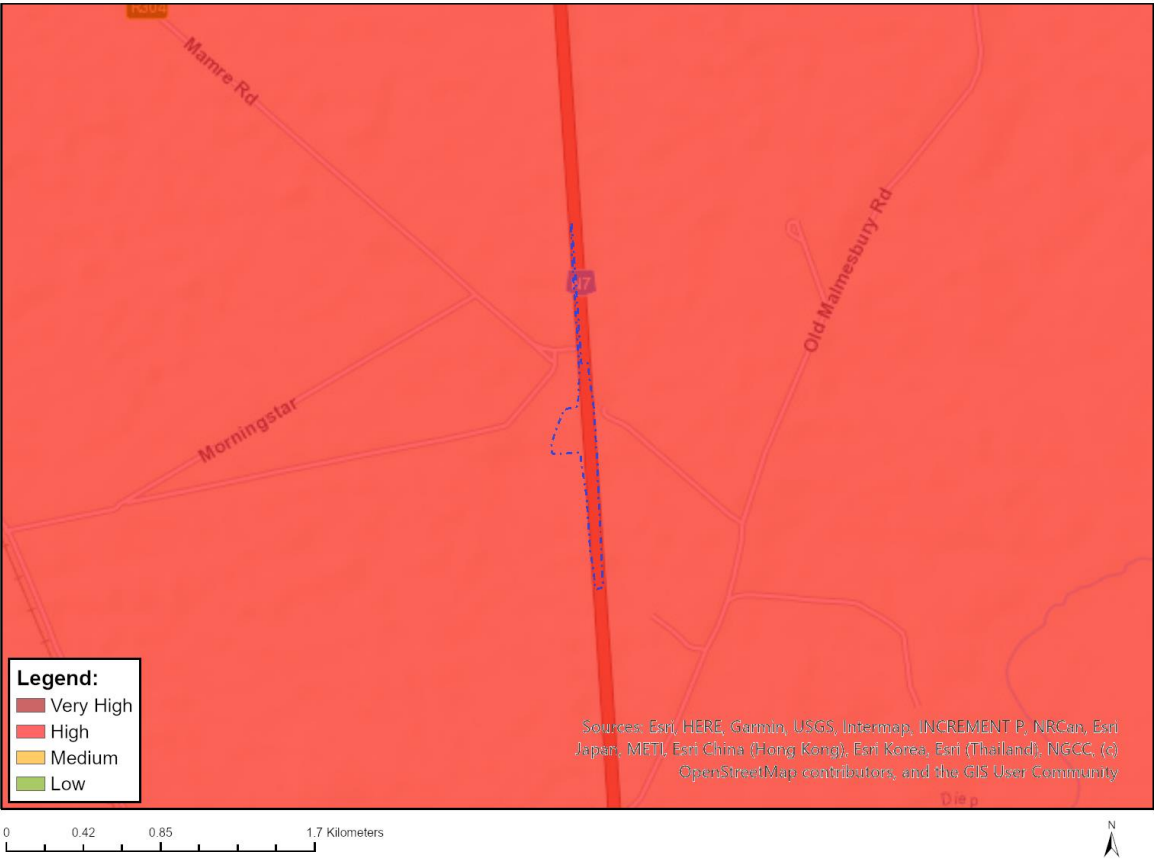


Very High sensitivity	High sensitivity	Medium sensitivity	Low sensitivity
			X

Sensitivity Features:

Sensitivity	Feature(s)
Low	Low Sensitivity

MAP OF RELATIVE CIVIL AVIATION THEME SENSITIVITY

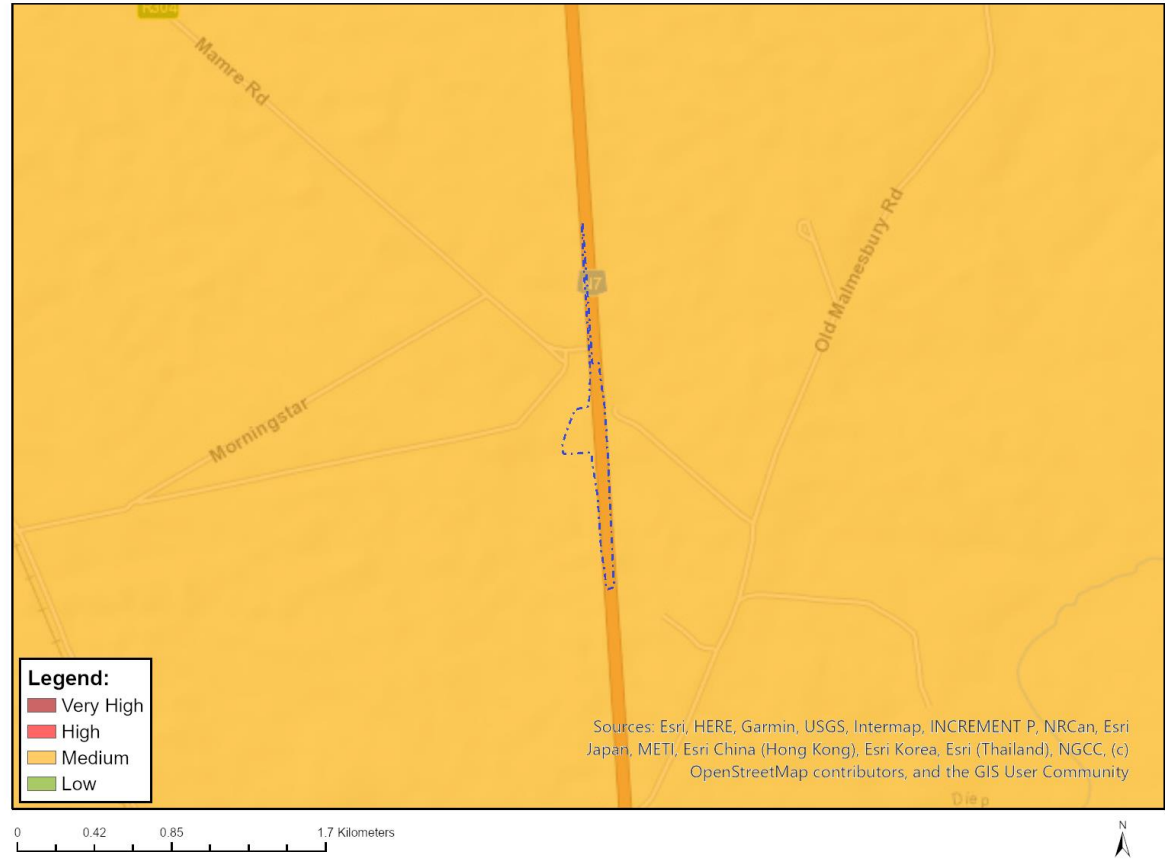


Very High sensitivity	High sensitivity	Medium sensitivity	Low sensitivity
	X		

Sensitivity Features:

Sensitivity	Feature(s)
High	Within 8 km of other civil aviation aerodrome
Medium	Between 15 and 35 km from a civil aviation radar
Medium	Between 15 and 35 km from a major civil aviation aerodrome

MAP OF RELATIVE DEFENCE THEME SENSITIVITY

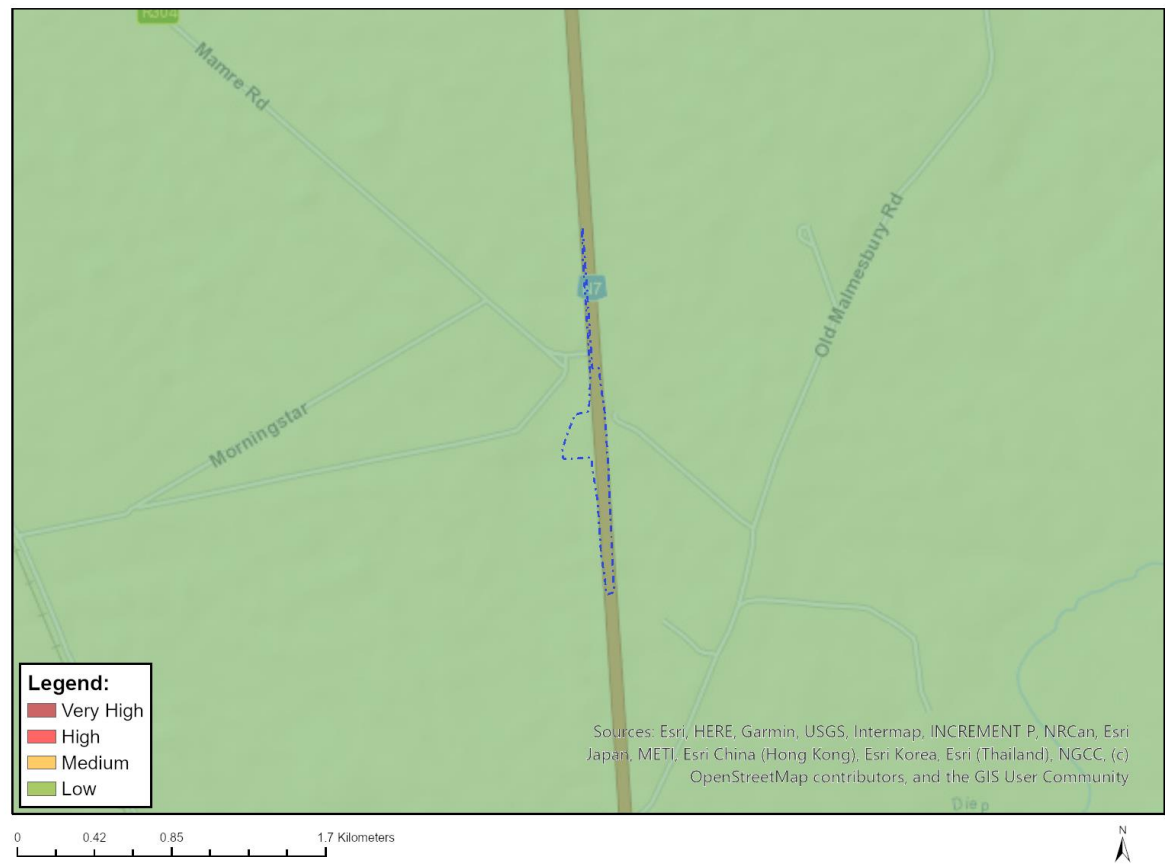


Very High sensitivity	High sensitivity	Medium sensitivity	Low sensitivity
		X	

Sensitivity Features:

Sensitivity	Feature(s)
Medium	Military and Defence Site

MAP OF RELATIVE PALEONTOLOGY THEME SENSITIVITY

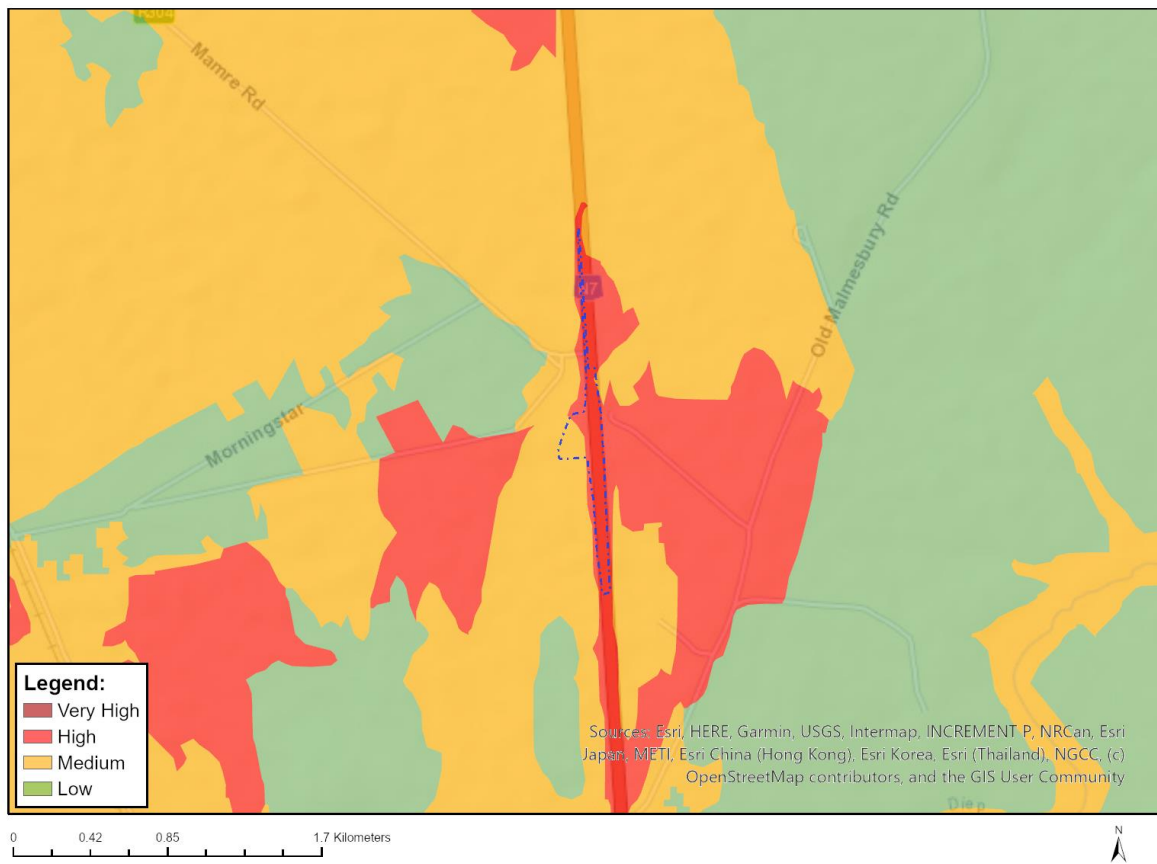


Very High sensitivity	High sensitivity	Medium sensitivity	Low sensitivity
			X

Sensitivity Features:

Sensitivity	Feature(s)
Low	Features with a Low paleontological sensitivity

MAP OF RELATIVE PLANT SPECIES THEME SENSITIVITY



Where only a sensitive plant unique number or sensitive animal unique number is provided in the screening report and an assessment is required, the environmental assessment practitioner (EAP) or specialist is required to email SANBI at eiadatarequests@sanbi.org.za listing all sensitive species with their unique identifiers for which information is required. The name has been withheld as the species may be prone to illegal harvesting and must be protected. SANBI will release the actual species name after the details of the EAP or specialist have been documented.

Very High sensitivity	High sensitivity	Medium sensitivity	Low sensitivity
	X		

Sensitivity Features:

Sensitivity	Feature(s)
High	Leucadendron thymifolium
Medium	Lampranthus amoenus
Medium	Lampranthus dilutus
Medium	Lampranthus filicaulis
Medium	Lampranthus leptaleon
Medium	Lampranthus peacockiae
Medium	Lampranthus scaber
Medium	Lampranthus sociorum
Medium	Lampranthus spiniformis
Medium	Lampranthus stenopetalus
Medium	Lampranthus stenus
Medium	Lampranthus tenuifolius
Medium	Antimima mucronata

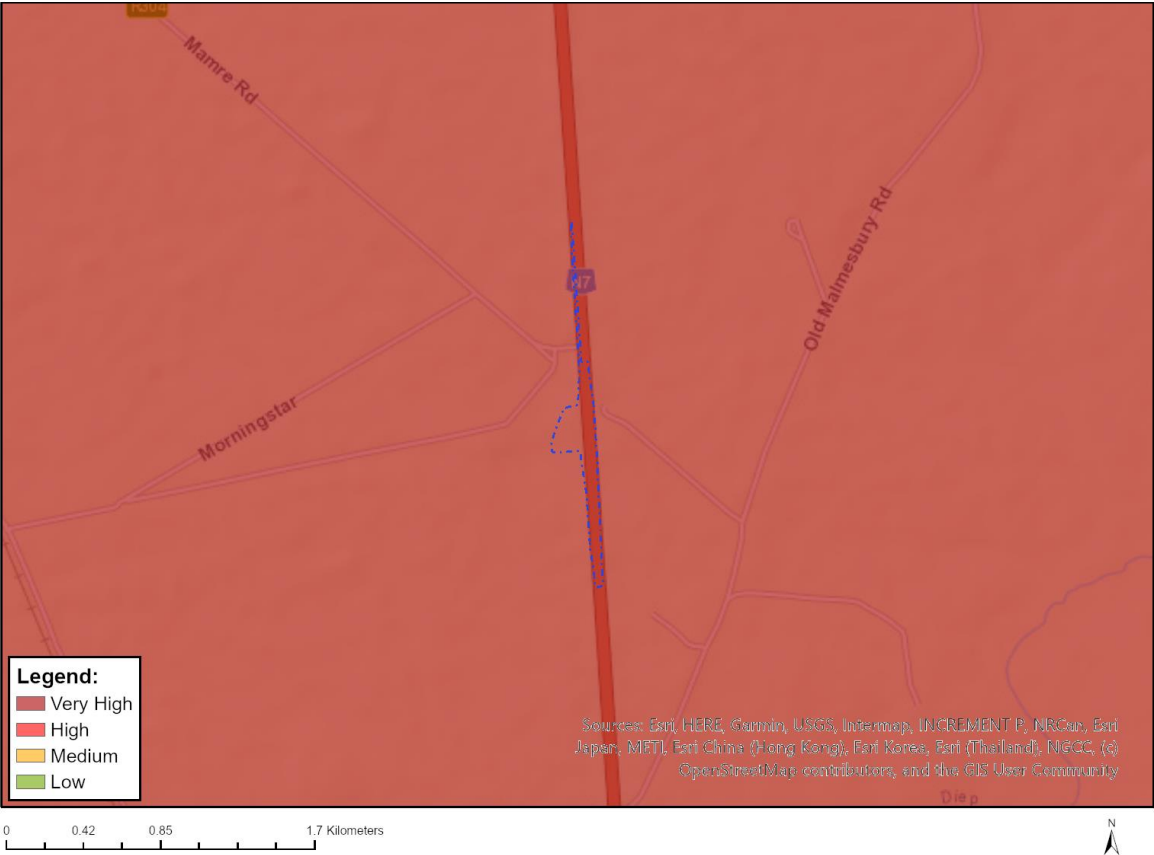
Medium	<i>Antimima aristulata</i>
Medium	<i>Erepsia patula</i>
Medium	<i>Erepsia ramosa</i>
Medium	<i>Cleretum clavatum</i>
Medium	<i>Ruschia diversifolia</i>
Medium	<i>Ruschia geminiflora</i>
Medium	<i>Ruschia tecta</i>
Medium	<i>Drosanthemum hispifolium</i>
Medium	<i>Cephalophyllum parviflorum</i>
Medium	<i>Lessertia argentea</i>
Medium	<i>Amphithalea ericifolia</i> subsp. <i>erecta</i>
Medium	<i>Xiphotheca lanceolata</i>
Medium	<i>Psoralea glaucina</i>
Medium	<i>Indigofera psoraloides</i>
Medium	<i>Aspalathus acanthophylla</i>
Medium	<i>Aspalathus aculeata</i>
Medium	<i>Aspalathus araneosa</i>
Medium	<i>Aspalathus lotoides</i> subsp. <i>lotoides</i>
Medium	<i>Aspalathus muraltioides</i>
Medium	<i>Aspalathus retroflexa</i> subsp. <i>bicolor</i>
Medium	<i>Aspalathus varians</i>
Medium	<i>Rafnia lancea</i>
Medium	<i>Rafnia angulata</i> subsp. <i>humilis</i>
Medium	<i>Rafnia angulata</i> subsp. <i>ericifolia</i>
Medium	<i>Lebeckia plukenetiana</i>
Medium	<i>Podalyria argentea</i>
Medium	<i>Podalyria microphylla</i>
Medium	<i>Podalyria sericea</i>
Medium	<i>Thesium ecklonianum</i>
Medium	<i>Leucadendron cinereum</i>
Medium	<i>Leucadendron lanigerum</i> var. <i>lanigerum</i>
Medium	<i>Leucadendron levisanus</i>
Medium	<i>Leucadendron stellare</i>
Medium	<i>Leucadendron thymifolium</i>
Medium	<i>Leucospermum hypophyllocarpodendron</i> subsp. <i>canaliculatum</i>
Medium	<i>Leucospermum hypophyllocarpodendron</i> subsp. <i>hypophyllocarpodendron</i>
Medium	<i>Protea burchellii</i>
Medium	<i>Diastella proteoides</i>
Medium	<i>Serruria aemula</i>
Medium	<i>Serruria brownii</i>
Medium	<i>Serruria trilopha</i>
Medium	<i>Microdon capitatus</i>
Medium	<i>Manulea corymbosa</i>
Medium	<i>Pentameris bachmannii</i>
Medium	<i>Pentameris pholiuroides</i>
Medium	<i>Anthospermum ericifolium</i>
Medium	<i>Lobostemon capitatus</i>
Medium	<i>Echiostachys incanus</i>
Medium	<i>Echiostachys spicatus</i>
Medium	<i>Hesperantha spicata</i> subsp. <i>spicata</i>
Medium	Sensitive species 14
Medium	Sensitive species 267
Medium	Sensitive species 631
Medium	Sensitive species 533
Medium	Sensitive species 878
Medium	<i>Geissorhiza brehmii</i>
Medium	<i>Geissorhiza furva</i>
Medium	<i>Geissorhiza humilis</i>
Medium	<i>Geissorhiza monanthos</i>
Medium	<i>Geissorhiza radians</i>

Medium	Geissorhiza setacea
Medium	Geissorhiza erosa
Medium	Ixia monadelpha
Medium	Sensitive species 881
Medium	Sensitive species 683
Medium	Sensitive species 560
Medium	Sensitive species 816
Medium	Sensitive species 1
Medium	Sensitive species 830
Medium	Sensitive species 1140
Medium	Sensitive species 995
Medium	Sensitive species 863
Medium	Pauridia alba
Medium	Pauridia canaliculata
Medium	Pauridia pygmaea
Medium	Pseudalthenia aschersoniana
Medium	Oxalis falcata
Medium	Oxalis natans
Medium	Erica bolusiae var. bolusiae
Medium	Stylapterus fruticosus
Medium	Hermannia procumbens subsp. procumbens
Medium	Hermannia rugosa
Medium	Sensitive species 769
Medium	Sensitive species 222
Medium	Sebaea rara
Medium	Sensitive species 444
Medium	Sensitive species 493
Medium	Sensitive species 478
Medium	Sensitive species 756
Medium	Adenogramma rigida
Medium	Wachendorfia brachyandra
Medium	Hessea cinnamomea
Medium	Sensitive species 133
Medium	Isolepis inconspicua
Medium	Isolepis venustula
Medium	Trianoptiles solitaria
Medium	Cannomois arenicola
Medium	Elegia prominens
Medium	Hypodiscus rugosus
Medium	Restio duthieae
Medium	Restio micans
Medium	Restio impolitus
Medium	Restio papillosus
Medium	Anisodonteia biflora
Medium	Cynanchum zeyheri
Medium	Sensitive species 985
Medium	Sensitive species 120
Medium	Sensitive species 266
Medium	Pterygodium cruciferum
Medium	Pterygodium inversum
Medium	Pterygodium microglossum
Medium	Gnidia spicata
Medium	Passerina paludosa
Medium	Lachnaea uniflora
Medium	Metalasia capitata
Medium	Metalasia octoflora
Medium	Marasmodes fasciculata
Medium	Steirodiscus tagetes
Medium	Senecio foeniculoides
Medium	Senecio cadiscus

Medium	<i>Cotula eckloniana</i>
Medium	<i>Athanasia capitata</i>
Medium	<i>Athanasia rugulosa</i>
Medium	<i>Arctotis angustifolia</i>
Medium	Sensitive species 1042
Medium	<i>Arctotheca forbesiana</i>
Medium	<i>Heterorhachis aculeata</i>
Medium	<i>Diosma dichotoma</i>
Medium	<i>Agathosma corymbosa</i>
Medium	<i>Agathosma glabrata</i>
Medium	<i>Adenandra villosa</i> subsp. <i>biseriata</i>
Medium	<i>Macrostylis cassiopoides</i> subsp. <i>dregeana</i>
Medium	<i>Macrostylis villosa</i> subsp. <i>villosa</i>
Medium	<i>Cliffortia ericifolia</i>
Medium	<i>Cliffortia hirta</i>
Medium	<i>Limonium depauperatum</i>
Medium	<i>Limonium purpuratum</i>
Medium	<i>Muraltia brevicornu</i>
Medium	<i>Muraltia decipiens</i>
Medium	<i>Muraltia macropetala</i>
Medium	<i>Muraltia mitior</i>
Medium	Sensitive species 262
Medium	Sensitive species 1135
Medium	Sensitive species 158
Medium	Sensitive species 1265
Medium	Sensitive species 616
Medium	<i>Wurmbea hiemalis</i>
Medium	<i>Wurmbea inusta</i>
Medium	<i>Phylica harveyi</i>
Medium	<i>Phylica plumosa</i> var. <i>squarrosa</i>
Medium	<i>Phylica stenopetala</i> var. <i>stenopetala</i>
Medium	<i>Phylica strigulosa</i>
Medium	<i>Phylica thunbergiana</i>
Medium	<i>Ezoloba macrocarpa</i>
Medium	<i>Codonorhiza azurea</i>
Medium	<i>Skiatophytum skiatophytoides</i>
Medium	<i>Lampranthus debilis</i>
Medium	<i>Lampranthus glaucus</i>
Medium	<i>Drosanthemum striatum</i>
Medium	<i>Argyrolobium velutinum</i>
Medium	<i>Xiphotheca reflexa</i>
Medium	<i>Psoralea alata</i>
Medium	<i>Aspalathus lebeckioides</i>
Medium	<i>Aspalathus recurva</i>
Medium	<i>Aspalathus tylodes</i>
Medium	<i>Aponogeton fugax</i>
Medium	<i>Leucospermum rodolentum</i>
Medium	<i>Protea scolymocephala</i>
Medium	Sensitive species 593
Medium	Sensitive species 335
Medium	Sensitive species 599
Medium	<i>Elegia squamosa</i>
Medium	<i>Elegia verreauxii</i>
Medium	<i>Restio paludosus</i>
Medium	<i>Restio rigoratus</i>
Medium	Sensitive species 500
Medium	Sensitive species 654
Medium	<i>Lachnaea capitata</i>
Medium	<i>Lachnaea grandiflora</i>
Medium	<i>Cotula pusilla</i>

Medium	Sensitive species 1225
Medium	Caesia sabulosa

MAP OF RELATIVE TERRESTRIAL BIODIVERSITY THEME SENSITIVITY



Very High sensitivity	High sensitivity	Medium sensitivity	Low sensitivity
X			

Sensitivity Features:

Sensitivity	Feature(s)
Very High	CBA 1a
Very High	CBA 1c
Very High	ESA 2
Very High	CR_Cape Flats Sand Fynbos

Alternative 6

**SCREENING REPORT FOR AN ENVIRONMENTAL AUTHORIZATION AS
REQUIRED BY THE 2014 EIA REGULATIONS – PROPOSED SITE
ENVIRONMENTAL SENSITIVITY**

EIA Reference number: 16/3/3/1/A1/41/3042/25

Project name: Alternative 1 N7 Weighbridge

Project title: Alternative 1 N7 Weighbridge

Date screening report generated: 28/01/2026 10:46:13

Applicant: Western Cape Government: Department of Infrastructure

Compiler: SESCO

Compiler signature:



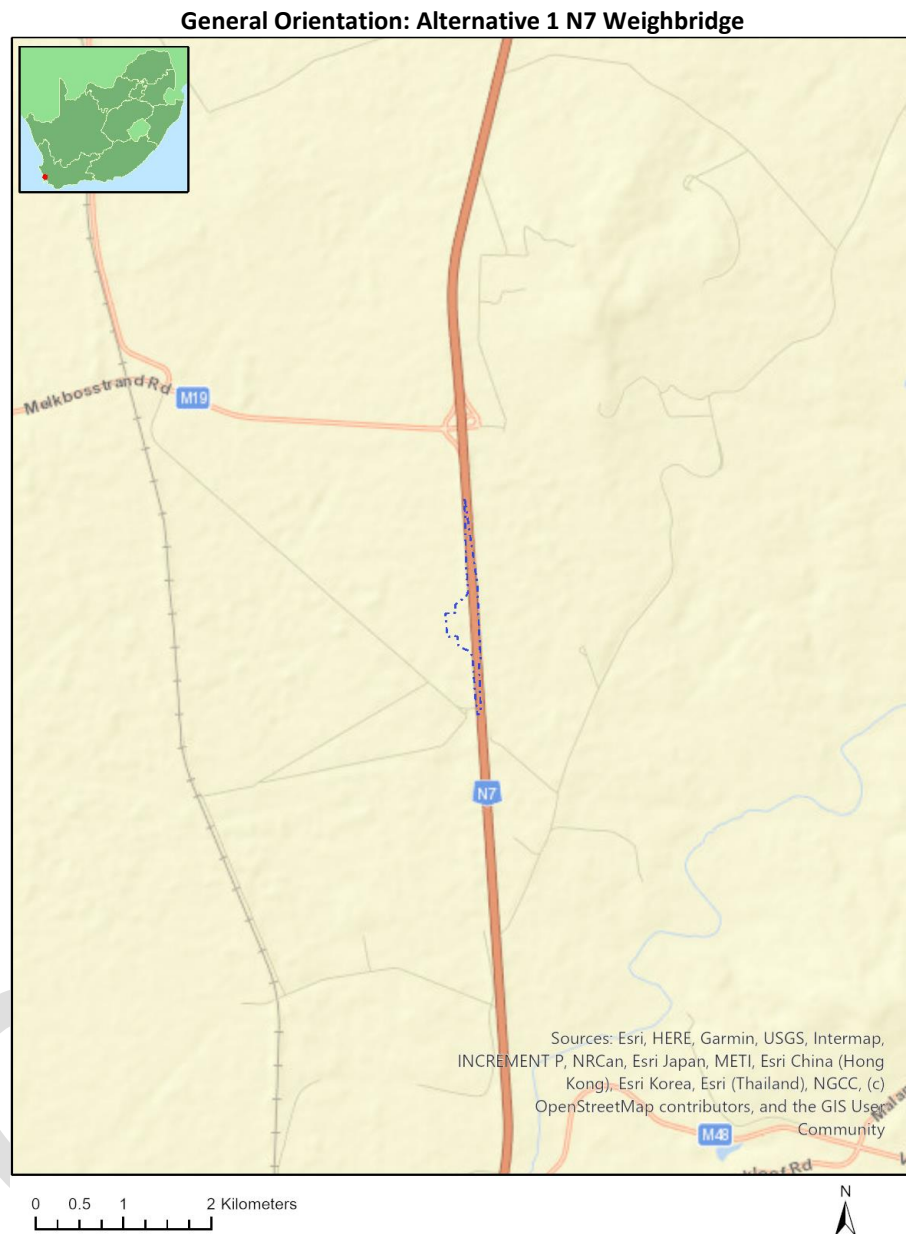
Application Category: Infrastructure | Transport Services | Roads | Public

Table of Contents

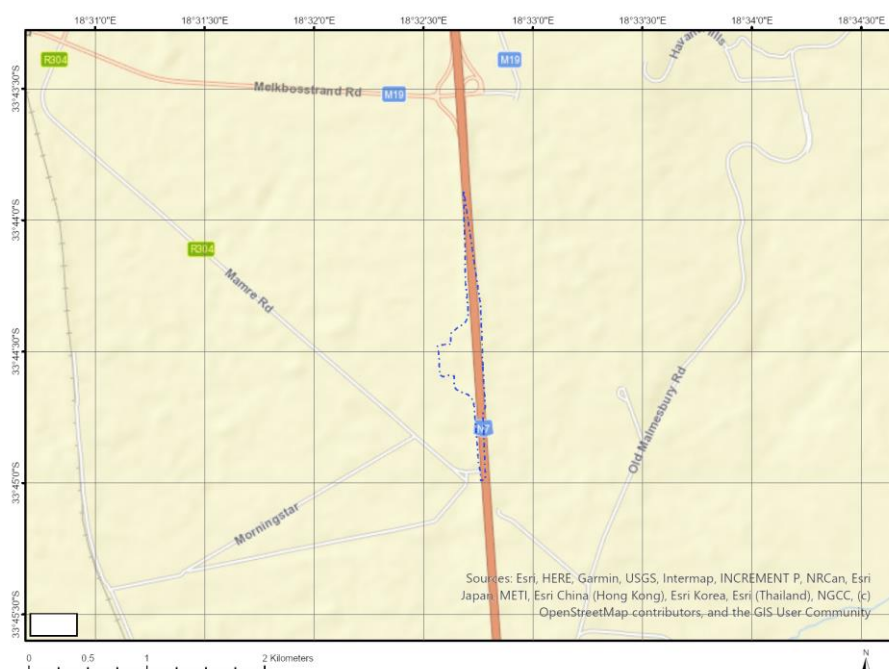
Proposed Project Location	3
Orientation map 1: General location	3
Map of proposed site and relevant area(s)	4
Cadastral details of the proposed site	4
Wind and Solar developments with an approved Environmental Authorisation or applications under consideration within 30 km of the proposed area	4
Environmental Management Frameworks relevant to the application	5
Environmental screening results and assessment outcomes	5
Relevant development incentives, restrictions, exclusions or prohibitions	5
Proposed Development Area Environmental Sensitivity	5
Specialist assessments identified	6
Results of the environmental sensitivity of the proposed area	8
MAP OF RELATIVE AGRICULTURE THEME SENSITIVITY	8
MAP OF RELATIVE ANIMAL SPECIES THEME SENSITIVITY	9
MAP OF RELATIVE AQUATIC BIODIVERSITY THEME SENSITIVITY	10
MAP OF RELATIVE ARCHAEOLOGICAL AND CULTURAL HERITAGE THEME SENSITIVITY	11
MAP OF RELATIVE CIVIL AVIATION THEME SENSITIVITY	12
MAP OF RELATIVE DEFENCE THEME SENSITIVITY	13
MAP OF RELATIVE PALEONTOLOGY THEME SENSITIVITY	14
MAP OF RELATIVE PLANT SPECIES THEME SENSITIVITY	15
MAP OF RELATIVE TERRESTRIAL BIODIVERSITY THEME SENSITIVITY	19

Proposed Project Location

Orientation map 1: General location



Map of proposed site and relevant area(s)



Cadastral details of the proposed site

Property details:

No	Farm Name	Farm/ Erf No	Portion	Latitude	Longitude	Property Type
1	MORNING STAR	141	0	33°44'31.35S	18°32'16.54E	Farm
2	MORNING STAR	141	0	33°44'11.59S	18°32'28.25E	Farm Portion
3	MORNING STAR	141	75	33°44'44.72S	18°33'4.47E	Farm Portion
4	MORNING STAR	141	0	33°44'13.12S	18°32'27.62E	Farm Portion

Development footprint¹ vertices:

No development footprint(s) specified.

Wind and Solar developments with an approved Environmental Authorisation or applications under consideration within 30 km of the proposed area

No	EIA Reference No	Classification	Status of application	Distance from proposed area (km)
1	12/12/20/2638	Wind	Approved	24.9
2	12/12/20/2109/AM1	Solar PV	Approved	20
3	12/12/20/2109	Solar PV	Approved	20
4	12/12/20/2638/AM2	Wind	Approved	24.9

¹ "development footprint", means the area within the site on which the development will take place and includes all ancillary developments for example roads, power lines, boundary walls, paving etc. which require vegetation clearance or which will be disturbed and for which the application has been submitted.

5	12/12/20/2109/AM3	Solar PV	Approved	20
6	12/12/20/2109/AM2	Solar PV	Approved	20
7	12/12/20/2638/AM3	Wind	Approved	24.9

Environmental Management Frameworks relevant to the application

No intersections with EMF areas found.

Environmental screening results and assessment outcomes

The following sections contain a summary of any development incentives, restrictions, exclusions or prohibitions that apply to the proposed development site as well as the most environmental sensitive features on the site based on the site sensitivity screening results for the application classification that was selected. The application classification selected for this report is: **Infrastructure|Transport Services|Roads|Public.**

Relevant development incentives, restrictions, exclusions or prohibitions

The following development incentives, restrictions, exclusions or prohibitions and their implications that apply to this site are indicated below.

Incentive, restriction or prohibition	Implication
Strategic Transmission Corridor-Central corridor	https://screening.environment.gov.za/ScreeningDownloads/DevelopmentZones/Combined_EGI.pdf
Strategic Gas Pipeline Corridors-Phase 1a & 1b: Saldanha to Ankerlig and Saldanha to Mossel Bay	https://screening.environment.gov.za/ScreeningDownloads/DevelopmentZones/Combined_GAS.pdf
South African Conservation Areas	https://screening.environment.gov.za/ScreeningDownloads/DevelopmentZones/SACAD_OR_2025_Q3_Metadata.pdf

Proposed Development Area Environmental Sensitivity

The following summary of the development site environmental sensitivities is identified. Only the highest environmental sensitivity is indicated. The footprint environmental sensitivities for the proposed development footprint as identified, are indicative only and must be verified on site by a suitably qualified person before the specialist assessments identified below can be confirmed.

Theme	Very High sensitivity	High sensitivity	Medium sensitivity	Low sensitivity
Agriculture Theme		X		
Animal Species Theme		X		
Aquatic Biodiversity Theme				X
Archaeological and Cultural Heritage Theme				X
Civil Aviation Theme		X		
Defence Theme			X	
Paleontology Theme				X

Plant Species Theme		X		
Terrestrial Biodiversity Theme	X			

Specialist assessments identified

Based on the selected classification, and the known impacts associated with the proposed development, the following list of specialist assessments have been identified for inclusion in the assessment report. It is the responsibility of the EAP to confirm this list and to motivate in the assessment report, the reason for not including any of the identified specialist study including the provision of photographic evidence of the site situation.

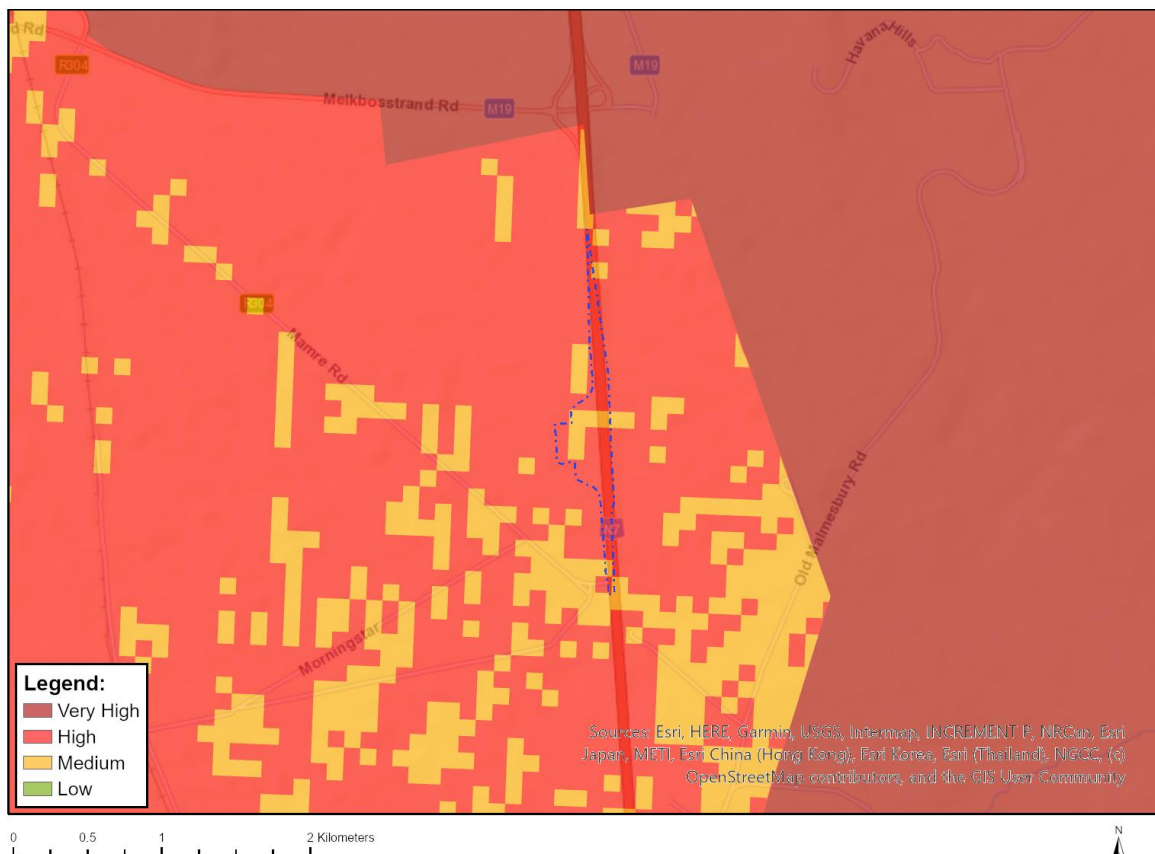
No	Specialist assessment	Assessment Protocol
1	Agricultural Impact Assessment	https://screening.environment.gov.za/ScreeningDownloads/AssessmentProtocols/Gazetted General Agriculture Assessment Protocols.pdf
2	Landscape/Visual Impact Assessment	https://screening.environment.gov.za/ScreeningDownloads/AssessmentProtocols/Gazetted General Requirement Assessment Protocols.pdf
3	Archaeological and Cultural Heritage Impact Assessment	https://screening.environment.gov.za/ScreeningDownloads/AssessmentProtocols/GuidanceforHIA.pdf
4	Palaeontology Impact Assessment	https://screening.environment.gov.za/ScreeningDownloads/AssessmentProtocols/GuidanceforPIA.pdf
5	Terrestrial Biodiversity Impact Assessment	https://screening.environment.gov.za/ScreeningDownloads/AssessmentProtocols/Gazetted Terrestrial Biodiversity Assessment Protocols.pdf
6	Aquatic Biodiversity Impact Assessment	https://screening.environment.gov.za/ScreeningDownloads/AssessmentProtocols/Gazetted Aquatic Biodiversity Assessment Protocols.pdf
7	Noise Impact Assessment	https://screening.environment.gov.za/ScreeningDownloads/AssessmentProtocols/Gazetted Noise Impacts Assessment Protocol.pdf
8	Traffic Impact Assessment	https://screening.environment.gov.za/ScreeningDownloads/AssessmentProtocols/Gazetted General Requirement Assessment Protocols.pdf
9	Geotechnical Assessment	https://screening.environment.gov.za/ScreeningDownloads/AssessmentProtocols/Gazetted General Requirement Assessment Protocols.pdf
10	Socio-Economic Assessment	https://screening.environment.gov.za/ScreeningDownloads/AssessmentProtocols/Gazetted General Requirement Assessment Protocols.pdf
11	Ambient Air Quality Impact Assessment	https://screening.environment.gov.za/ScreeningDownloads/AssessmentProtocols/Gazetted General Requirement Assessment Protocols.pdf
12	Plant Species Assessment	https://screening.environment.gov.za/ScreeningDownloads/AssessmentProtocols/Gazetted Plant Species Assessment Protocols.pdf
13	Animal Species Assessment	https://screening.environment.gov.za/ScreeningDownloads/AssessmentProtocols/Gazetted Animal Species Assessment Protocols.pdf

OFFICIAL

Results of the environmental sensitivity of the proposed area.

The following section represents the results of the screening for environmental sensitivity of the proposed site for relevant environmental themes associated with the project classification. It is the duty of the EAP to ensure that the environmental themes provided by the screening tool are comprehensive and complete for the project. Refer to the disclaimer.

MAP OF RELATIVE AGRICULTURE THEME SENSITIVITY

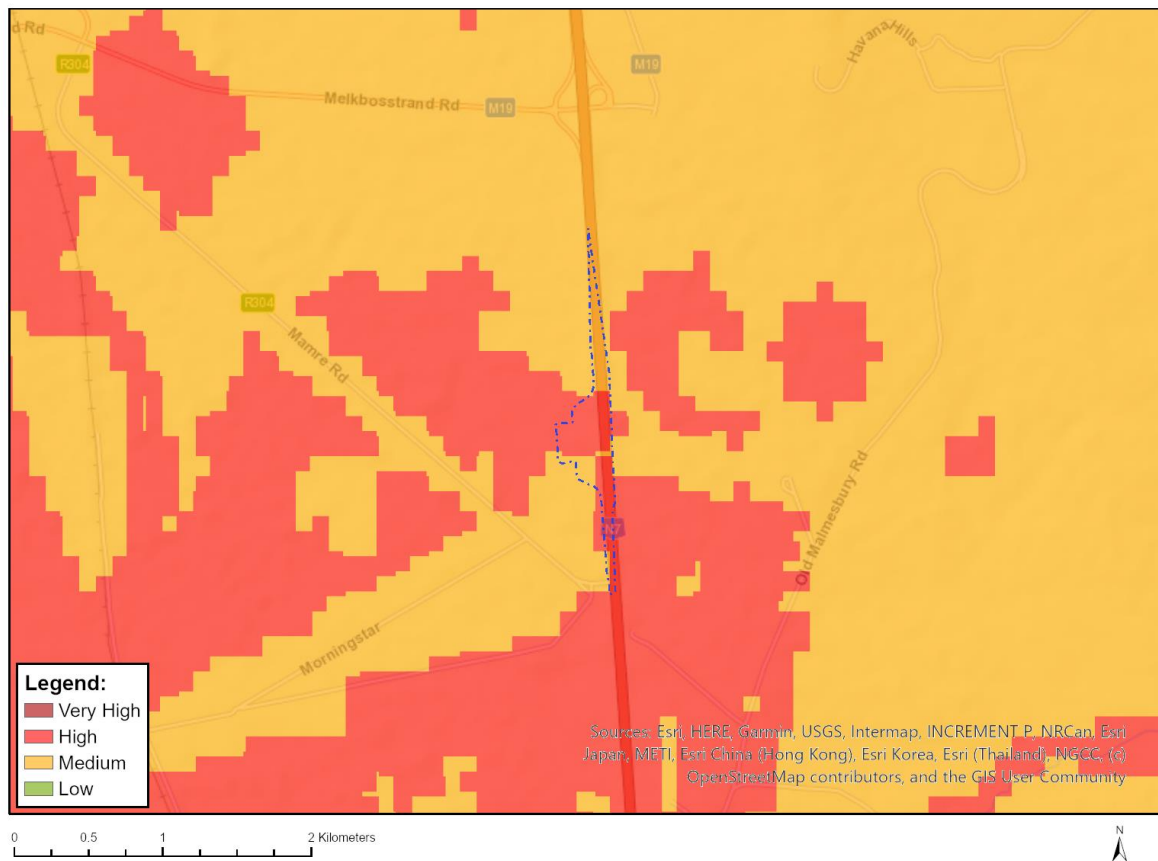


Very High sensitivity	High sensitivity	Medium sensitivity	Low sensitivity
	X		

Sensitivity Features:

Sensitivity	Feature(s)
High	10. Moderate-High
High	09. Moderate-High
High	08. Moderate
Medium	07. Low-Moderate

MAP OF RELATIVE ANIMAL SPECIES THEME SENSITIVITY



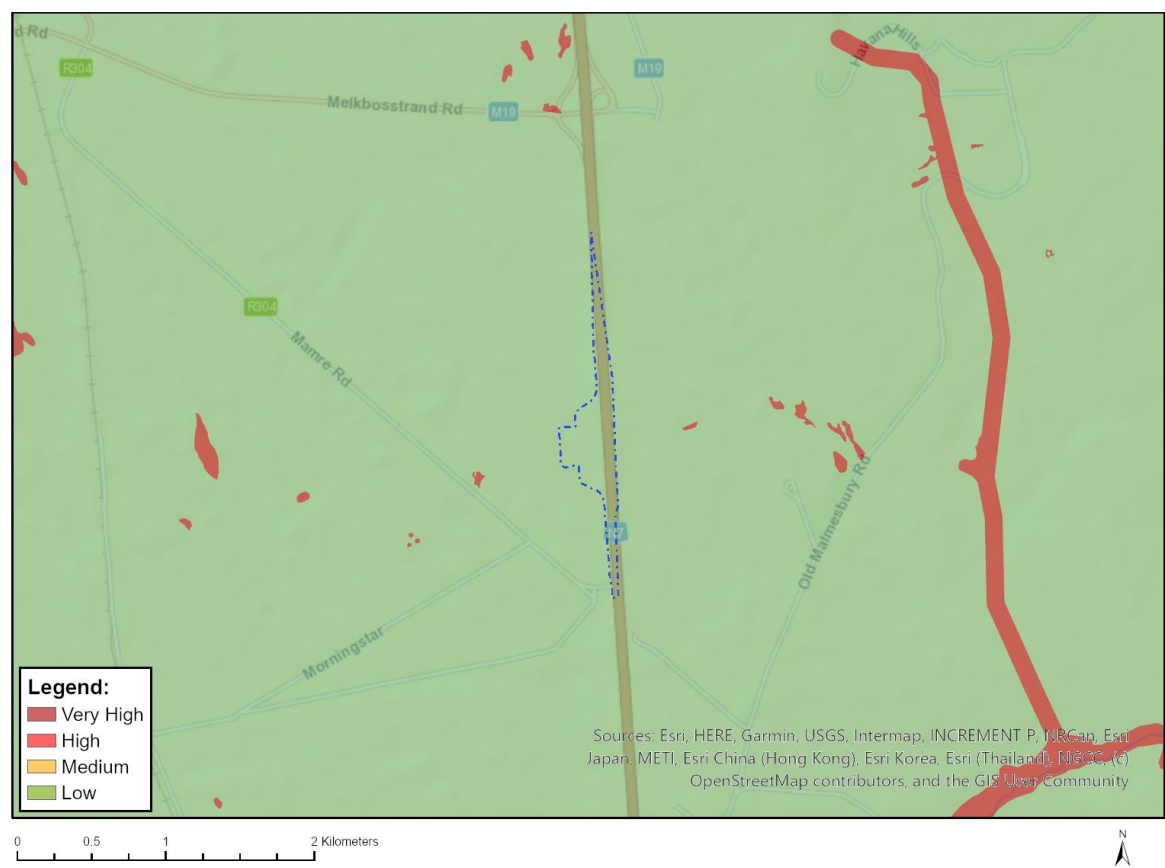
Where only a sensitive plant unique number or sensitive animal unique number is provided in the screening report and an assessment is required, the environmental assessment practitioner (EAP) or specialist is required to email SANBI at eiadatarequests@sanbi.org.za listing all sensitive species with their unique identifiers for which information is required. The name has been withheld as the species may be prone to illegal harvesting and must be protected. SANBI will release the actual species name after the details of the EAP or specialist have been documented.

Very High sensitivity	High sensitivity	Medium sensitivity	Low sensitivity
	X		

Sensitivity Features:

Sensitivity	Feature(s)
High	Aves-Circus ranivorus
High	Aves-Circus maurus
High	Aves-Polemaetus bellicosus
High	Aves-Sagittarius serpentarius
Medium	Aves-Afrodis afra
Medium	Invertebrate-Pachysoma aesculapius
Medium	Invertebrate-Bullacris obliqua

MAP OF RELATIVE AQUATIC BIODIVERSITY THEME SENSITIVITY

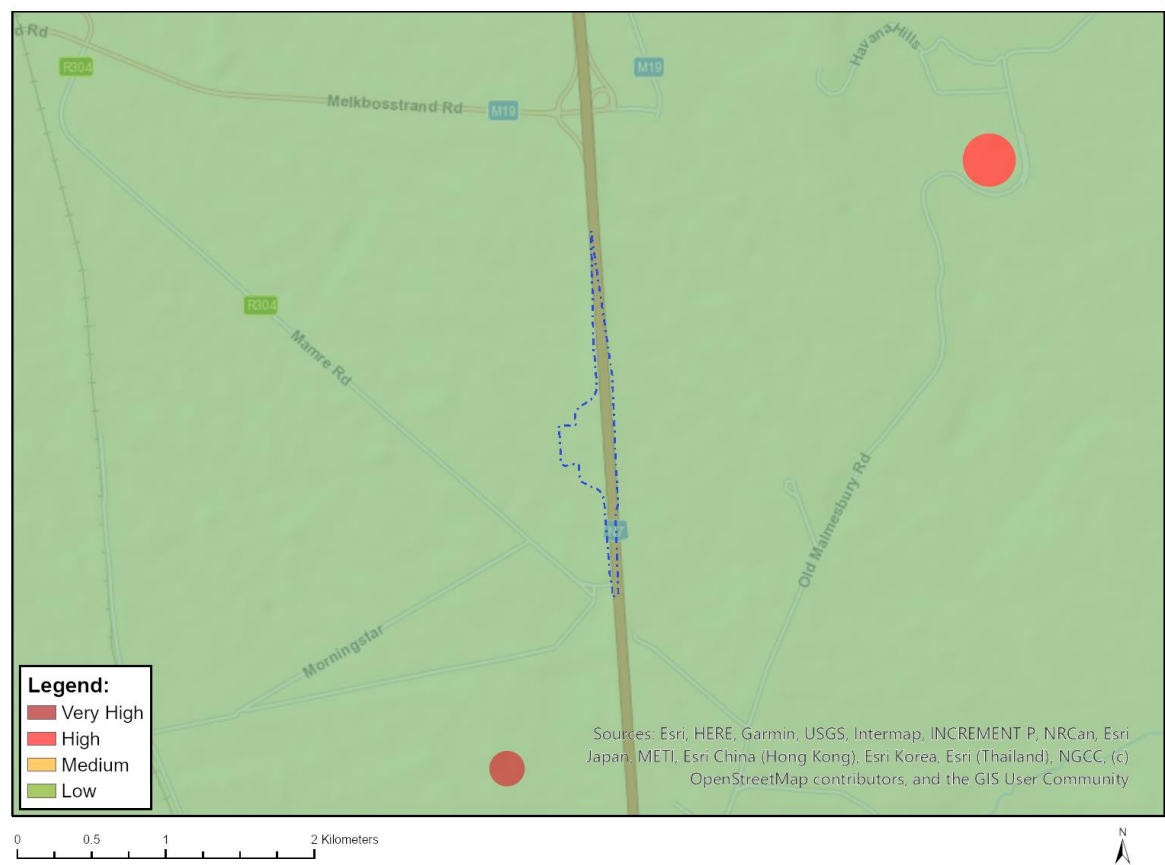


Very High sensitivity	High sensitivity	Medium sensitivity	Low sensitivity
			X

Sensitivity Features:

Sensitivity	Feature(s)
Low	Low Sensitivity

MAP OF RELATIVE ARCHAEOLOGICAL AND CULTURAL HERITAGE THEME SENSITIVITY



Very High sensitivity	High sensitivity	Medium sensitivity	Low sensitivity
			X

Sensitivity Features:

Sensitivity	Feature(s)
Low	Low Sensitivity

MAP OF RELATIVE CIVIL AVIATION THEME SENSITIVITY

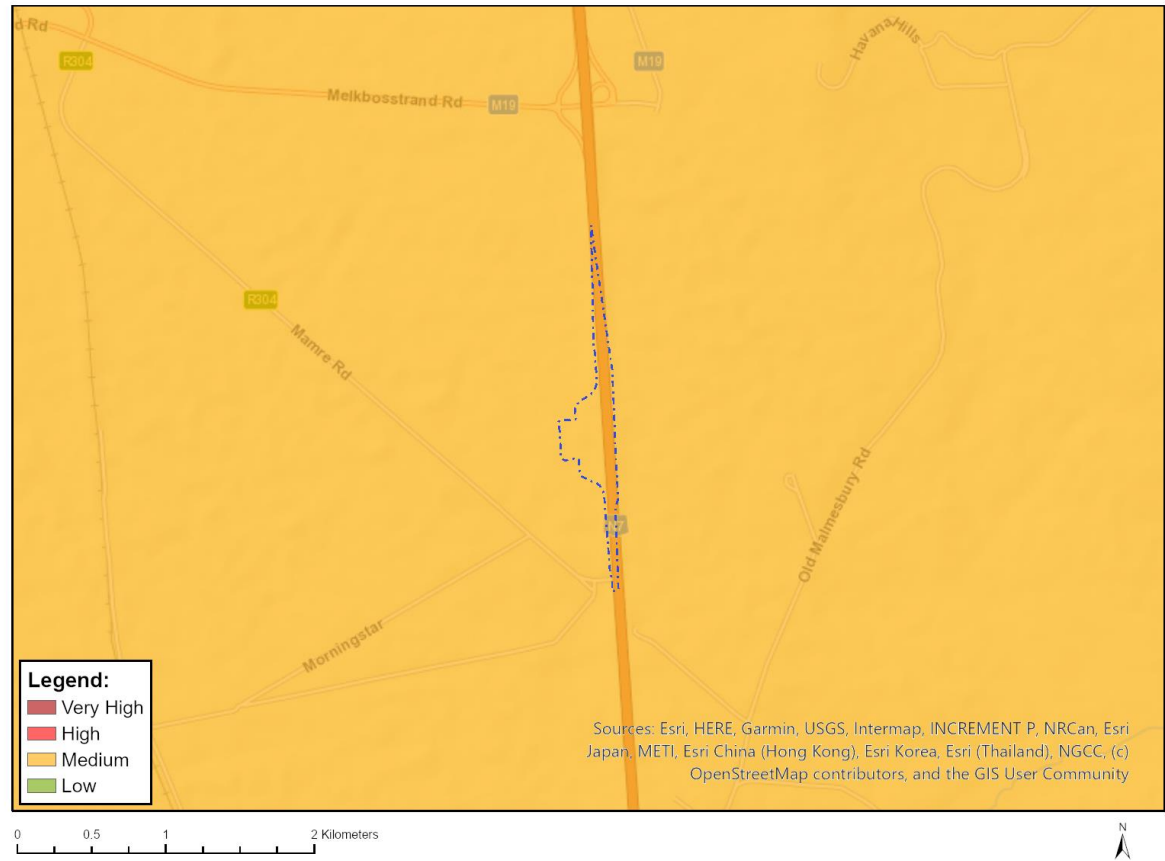


Very High sensitivity	High sensitivity	Medium sensitivity	Low sensitivity
	X		

Sensitivity Features:

Sensitivity	Feature(s)
High	Within 8 km of other civil aviation aerodrome
Medium	Between 15 and 35 km from a civil aviation radar
Medium	Between 15 and 35 km from a major civil aviation aerodrome

MAP OF RELATIVE DEFENCE THEME SENSITIVITY

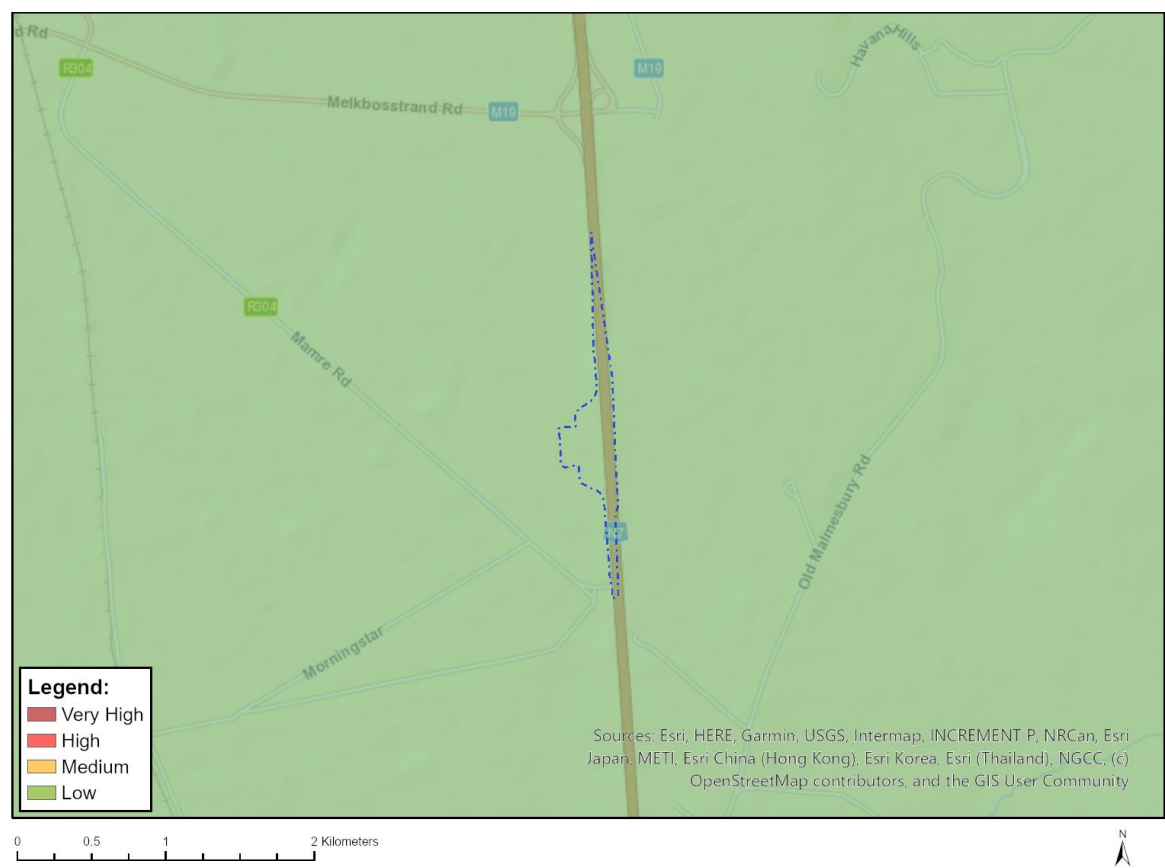


Very High sensitivity	High sensitivity	Medium sensitivity	Low sensitivity
		X	

Sensitivity Features:

Sensitivity	Feature(s)
Medium	Military and Defence Site

MAP OF RELATIVE PALEONTOLOGY THEME SENSITIVITY

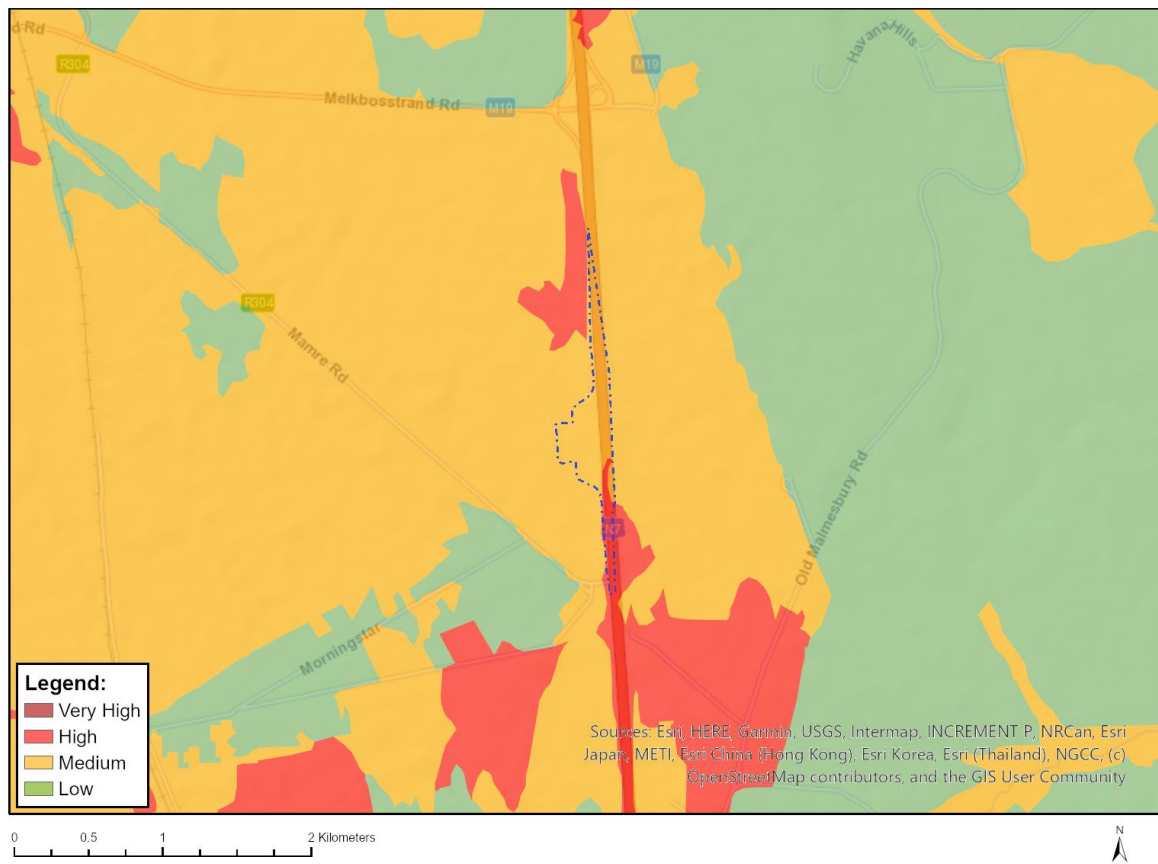


Very High sensitivity	High sensitivity	Medium sensitivity	Low sensitivity
			X

Sensitivity Features:

Sensitivity	Feature(s)
Low	Features with a Low paleontological sensitivity

MAP OF RELATIVE PLANT SPECIES THEME SENSITIVITY



Where only a sensitive plant unique number or sensitive animal unique number is provided in the screening report and an assessment is required, the environmental assessment practitioner (EAP) or specialist is required to email SANBI at eiadatarequests@sanbi.org.za listing all sensitive species with their unique identifiers for which information is required. The name has been withheld as the species may be prone to illegal harvesting and must be protected. SANBI will release the actual species name after the details of the EAP or specialist have been documented.

Very High sensitivity	High sensitivity	Medium sensitivity	Low sensitivity
	X		

Sensitivity Features:

Sensitivity	Feature(s)
High	Leucadendron thymifolium
Medium	Lampranthus amoenus
Medium	Lampranthus dilutus
Medium	Lampranthus filicaulis
Medium	Lampranthus leptaleon
Medium	Lampranthus peacockiae
Medium	Lampranthus scaber
Medium	Lampranthus sociorum
Medium	Lampranthus spiniformis
Medium	Lampranthus stenopetalus
Medium	Lampranthus stenus
Medium	Lampranthus tenuifolius
Medium	Antimima mucronata

Medium	<i>Antimima aristulata</i>
Medium	<i>Erepsia patula</i>
Medium	<i>Erepsia ramosa</i>
Medium	<i>Cleretum clavatum</i>
Medium	<i>Ruschia diversifolia</i>
Medium	<i>Ruschia geminiflora</i>
Medium	<i>Ruschia tecta</i>
Medium	<i>Drosanthemum hispifolium</i>
Medium	<i>Cephalophyllum parviflorum</i>
Medium	<i>Lessertia argentea</i>
Medium	<i>Amphithalea ericifolia</i> subsp. <i>erecta</i>
Medium	<i>Xiphotheca lanceolata</i>
Medium	<i>Psoralea glaucina</i>
Medium	<i>Indigofera psoraloides</i>
Medium	<i>Aspalathus acanthophylla</i>
Medium	<i>Aspalathus aculeata</i>
Medium	<i>Aspalathus araneosa</i>
Medium	<i>Aspalathus lotoides</i> subsp. <i>lotoides</i>
Medium	<i>Aspalathus muraltioides</i>
Medium	<i>Aspalathus retroflexa</i> subsp. <i>bicolor</i>
Medium	<i>Aspalathus varians</i>
Medium	<i>Rafnia lancea</i>
Medium	<i>Rafnia angulata</i> subsp. <i>humilis</i>
Medium	<i>Rafnia angulata</i> subsp. <i>ericifolia</i>
Medium	<i>Lebeckia plukenetiana</i>
Medium	<i>Podalyria argentea</i>
Medium	<i>Podalyria microphylla</i>
Medium	<i>Podalyria sericea</i>
Medium	<i>Thesium ecklonianum</i>
Medium	<i>Leucadendron cinereum</i>
Medium	<i>Leucadendron lanigerum</i> var. <i>lanigerum</i>
Medium	<i>Leucadendron levisanus</i>
Medium	<i>Leucadendron stellare</i>
Medium	<i>Leucadendron thymifolium</i>
Medium	<i>Leucospermum hypophyllocarpodendron</i> subsp. <i>canaliculatum</i>
Medium	<i>Leucospermum hypophyllocarpodendron</i> subsp. <i>hypophyllocarpodendron</i>
Medium	<i>Protea burchellii</i>
Medium	<i>Diastella proteoides</i>
Medium	<i>Serruria aemula</i>
Medium	<i>Serruria brownii</i>
Medium	<i>Serruria trilopha</i>
Medium	<i>Microdon capitatus</i>
Medium	<i>Manulea corymbosa</i>
Medium	<i>Pentameris bachmannii</i>
Medium	<i>Pentameris pholiuroides</i>
Medium	<i>Anthospermum ericifolium</i>
Medium	<i>Lobostemon capitatus</i>
Medium	<i>Echiostachys incanus</i>
Medium	<i>Echiostachys spicatus</i>
Medium	<i>Hesperantha spicata</i> subsp. <i>spicata</i>
Medium	Sensitive species 14
Medium	Sensitive species 267
Medium	Sensitive species 631
Medium	Sensitive species 533
Medium	Sensitive species 878
Medium	<i>Geissorhiza brehmii</i>
Medium	<i>Geissorhiza furva</i>
Medium	<i>Geissorhiza humilis</i>
Medium	<i>Geissorhiza monanthos</i>
Medium	<i>Geissorhiza radians</i>

Medium	Geissorhiza setacea
Medium	Geissorhiza erosa
Medium	Ixia monadelpha
Medium	Sensitive species 881
Medium	Sensitive species 683
Medium	Sensitive species 560
Medium	Sensitive species 816
Medium	Sensitive species 1
Medium	Sensitive species 830
Medium	Sensitive species 1140
Medium	Sensitive species 995
Medium	Sensitive species 863
Medium	Pauridia alba
Medium	Pauridia canaliculata
Medium	Pauridia pygmaea
Medium	Pseudalthenia aschersoniana
Medium	Oxalis falcata
Medium	Oxalis natans
Medium	Erica bolusiae var. bolusiae
Medium	Stylapterus fruticosus
Medium	Hermannia procumbens subsp. procumbens
Medium	Hermannia rugosa
Medium	Sensitive species 769
Medium	Sensitive species 222
Medium	Sebaea rara
Medium	Sensitive species 444
Medium	Sensitive species 493
Medium	Sensitive species 478
Medium	Sensitive species 756
Medium	Adenogramma rigida
Medium	Wachendorfia brachyandra
Medium	Hessea cinnamomea
Medium	Sensitive species 133
Medium	Isolepis inconspicua
Medium	Isolepis venustula
Medium	Trianoptiles solitaria
Medium	Cannomois arenicola
Medium	Elegia prominens
Medium	Hypodiscus rugosus
Medium	Restio duthieae
Medium	Restio micans
Medium	Restio impolitus
Medium	Restio papillosus
Medium	Anisodonteia biflora
Medium	Cynanchum zeyheri
Medium	Sensitive species 985
Medium	Sensitive species 120
Medium	Sensitive species 266
Medium	Pterygodium cruciferum
Medium	Pterygodium inversum
Medium	Pterygodium microglossum
Medium	Gnidia spicata
Medium	Passerina paludosa
Medium	Lachnaea uniflora
Medium	Metalasia capitata
Medium	Metalasia octoflora
Medium	Marasmodes fasciculata
Medium	Steirodiscus tagetes
Medium	Senecio foeniculoides
Medium	Senecio cadiscus

Medium	<i>Cotula eckloniana</i>
Medium	<i>Athanasia capitata</i>
Medium	<i>Athanasia rugulosa</i>
Medium	<i>Arctotis angustifolia</i>
Medium	Sensitive species 1042
Medium	<i>Arctotheca forbesiana</i>
Medium	<i>Heterorhachis aculeata</i>
Medium	<i>Diosma dichotoma</i>
Medium	<i>Agathosma corymbosa</i>
Medium	<i>Agathosma glabrata</i>
Medium	<i>Adenandra villosa</i> subsp. <i>biseriata</i>
Medium	<i>Macrostylis cassiopoides</i> subsp. <i>dregeana</i>
Medium	<i>Macrostylis villosa</i> subsp. <i>villosa</i>
Medium	<i>Cliffortia ericifolia</i>
Medium	<i>Cliffortia hirta</i>
Medium	<i>Limonium depauperatum</i>
Medium	<i>Limonium purpuratum</i>
Medium	<i>Muraltia brevicornu</i>
Medium	<i>Muraltia decipiens</i>
Medium	<i>Muraltia macropetala</i>
Medium	<i>Muraltia mitior</i>
Medium	Sensitive species 262
Medium	Sensitive species 1135
Medium	Sensitive species 158
Medium	Sensitive species 1265
Medium	Sensitive species 616
Medium	<i>Wurmbea hiemalis</i>
Medium	<i>Wurmbea inusta</i>
Medium	<i>Phylica harveyi</i>
Medium	<i>Phylica plumosa</i> var. <i>squarrosa</i>
Medium	<i>Phylica stenopetala</i> var. <i>stenopetala</i>
Medium	<i>Phylica strigulosa</i>
Medium	<i>Phylica thunbergiana</i>
Medium	<i>Ezoloba macrocarpa</i>
Medium	<i>Codonorhiza azurea</i>
Medium	<i>Skiatophytum skiatophytoides</i>
Medium	<i>Lampranthus debilis</i>
Medium	<i>Lampranthus glaucus</i>
Medium	<i>Drosanthemum striatum</i>
Medium	<i>Argyrolobium velutinum</i>
Medium	<i>Xiphotheca reflexa</i>
Medium	<i>Psoralea alata</i>
Medium	<i>Aspalathus lebeckioides</i>
Medium	<i>Aspalathus recurva</i>
Medium	<i>Aspalathus tylodes</i>
Medium	<i>Aponogeton fugax</i>
Medium	<i>Leucospermum rodolentum</i>
Medium	<i>Protea scolymocephala</i>
Medium	Sensitive species 593
Medium	Sensitive species 335
Medium	Sensitive species 599
Medium	<i>Elegia squamosa</i>
Medium	<i>Elegia verreauxii</i>
Medium	<i>Restio paludosus</i>
Medium	<i>Restio rigoratus</i>
Medium	Sensitive species 500
Medium	Sensitive species 654
Medium	<i>Lachnaea capitata</i>
Medium	<i>Lachnaea grandiflora</i>
Medium	<i>Cotula pusilla</i>

Medium	Sensitive species 1225
Medium	Caesia sabulosa

MAP OF RELATIVE TERRESTRIAL BIODIVERSITY THEME SENSITIVITY



Very High sensitivity	High sensitivity	Medium sensitivity	Low sensitivity
X			

Sensitivity Features:

Sensitivity	Feature(s)
Very High	CBA 1b
Very High	CBA 1c
Very High	ESA 2
Very High	CR_Cape Flats Sand Fynbos

Alternative 7

SCREENING REPORT FOR AN ENVIRONMENTAL AUTHORIZATION AS REQUIRED BY THE 2014 EIA REGULATIONS – PROPOSED SITE ENVIRONMENTAL SENSITIVITY

EIA Reference number: 16/3/3/1/A1/41/3042/25

Project name: Alternative 2 N7 Weighbridge

Project title: Alternative 2 N7 Weighbridge

Date screening report generated: 28/01/2026 10:56:54

Applicant: Western Cape Government: Department of Infrastructure

Compiler: SEScc

Compiler signature:



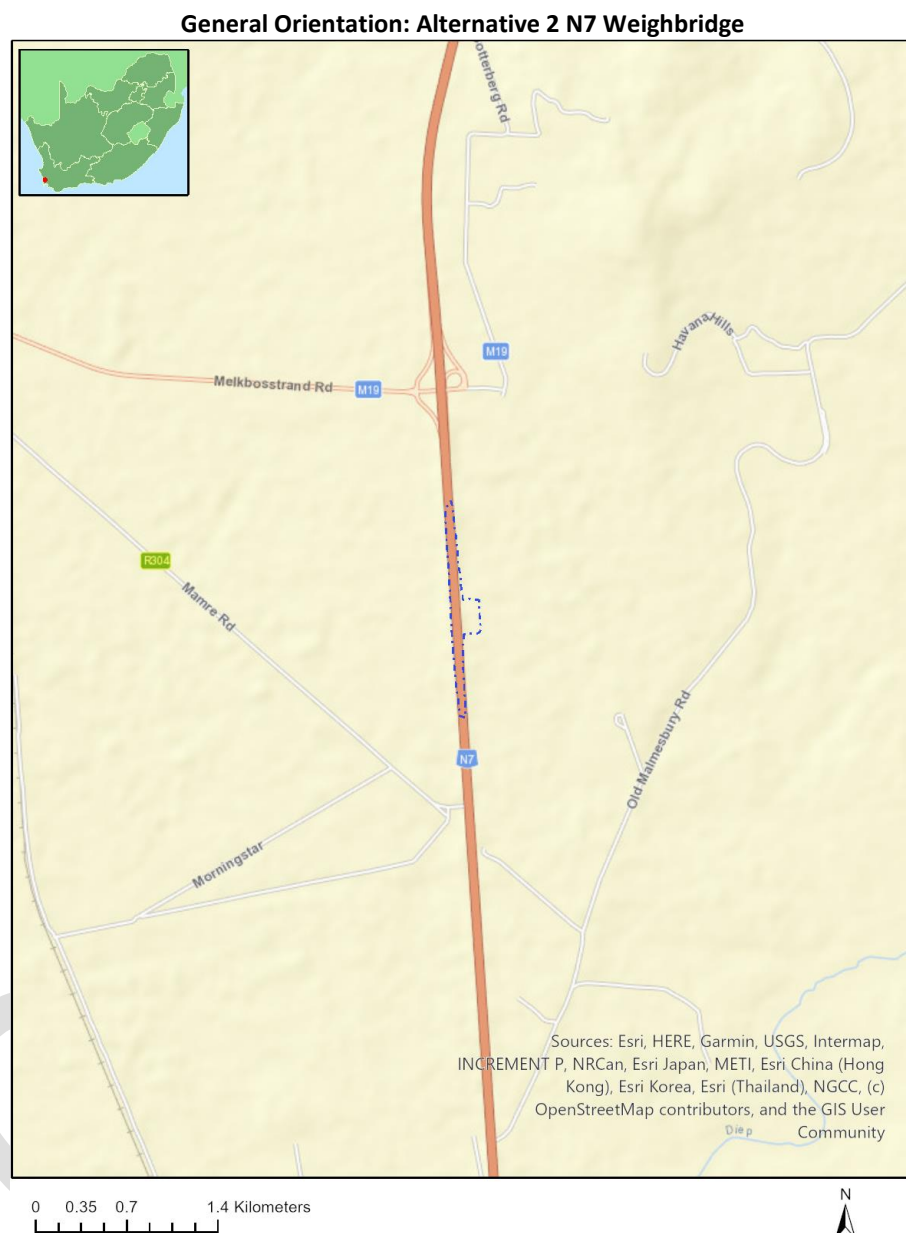
Application Category: Infrastructure | Transport Services | Roads | Public

Table of Contents

Proposed Project Location	3
Orientation map 1: General location	3
Map of proposed site and relevant area(s)	4
Cadastral details of the proposed site	4
Wind and Solar developments with an approved Environmental Authorisation or applications under consideration within 30 km of the proposed area	4
Environmental Management Frameworks relevant to the application	5
Environmental screening results and assessment outcomes	5
Relevant development incentives, restrictions, exclusions or prohibitions	5
Proposed Development Area Environmental Sensitivity	5
Specialist assessments identified	6
Results of the environmental sensitivity of the proposed area	8
MAP OF RELATIVE AGRICULTURE THEME SENSITIVITY	8
MAP OF RELATIVE ANIMAL SPECIES THEME SENSITIVITY	9
MAP OF RELATIVE AQUATIC BIODIVERSITY THEME SENSITIVITY	10
MAP OF RELATIVE ARCHAEOLOGICAL AND CULTURAL HERITAGE THEME SENSITIVITY	11
MAP OF RELATIVE CIVIL AVIATION THEME SENSITIVITY	12
MAP OF RELATIVE DEFENCE THEME SENSITIVITY	13
MAP OF RELATIVE PALEONTOLOGY THEME SENSITIVITY	14
MAP OF RELATIVE PLANT SPECIES THEME SENSITIVITY	15
MAP OF RELATIVE TERRESTRIAL BIODIVERSITY THEME SENSITIVITY	19

Proposed Project Location

Orientation map 1: General location



Map of proposed site and relevant area(s)



Cadastral details of the proposed site

Property details:

No	Farm Name	Farm/ Erf No	Portion	Latitude	Longitude	Property Type
1	MORNING STAR	141	0	33°44'31.35S	18°32'16.54E	Farm
2	MORNING STAR	141	0	33°44'11.59S	18°32'28.25E	Farm Portion
3	MORNING STAR	141	0	33°44'13.12S	18°32'27.62E	Farm Portion

Development footprint¹ vertices:

No development footprint(s) specified.

Wind and Solar developments with an approved Environmental Authorisation or applications under consideration within 30 km of the proposed area

No	EIA Reference No	Classification	Status of application	Distance from proposed area (km)
1	12/12/20/2638	Wind	Approved	25
2	12/12/20/2109/AM1	Solar PV	Approved	20
3	12/12/20/2109	Solar PV	Approved	20
4	12/12/20/2638/AM2	Wind	Approved	25
5	12/12/20/2109/AM3	Solar PV	Approved	20

¹ “development footprint”, means the area within the site on which the development will take place and includes all ancillary developments for example roads, power lines, boundary walls, paving etc. which require vegetation clearance or which will be disturbed and for which the application has been submitted.

6	12/12/20/2109/AM2	Solar PV	Approved	20
7	12/12/20/2638/AM3	Wind	Approved	25

Environmental Management Frameworks relevant to the application

No intersections with EMF areas found.

Environmental screening results and assessment outcomes

The following sections contain a summary of any development incentives, restrictions, exclusions or prohibitions that apply to the proposed development site as well as the most environmental sensitive features on the site based on the site sensitivity screening results for the application classification that was selected. The application classification selected for this report is: **Infrastructure | Transport Services | Roads | Public.**

Relevant development incentives, restrictions, exclusions or prohibitions

The following development incentives, restrictions, exclusions or prohibitions and their implications that apply to this site are indicated below.

Incentive, restriction or prohibition	Implication
Strategic Transmission Corridor-Central corridor	https://screening.environment.gov.za/ScreeningDownloads/DevelopmentZones/Combined_EGI.pdf
Strategic Gas Pipeline Corridors-Phase 1a & 1b: Saldanha to Ankerlig and Saldanha to Mossel Bay	https://screening.environment.gov.za/ScreeningDownloads/DevelopmentZones/Combined_GAS.pdf
South African Conservation Areas	https://screening.environment.gov.za/ScreeningDownloads/DevelopmentZones/SACAD_OR_2025_Q3_Metadata.pdf

Proposed Development Area Environmental Sensitivity

The following summary of the development site environmental sensitivities is identified. Only the highest environmental sensitivity is indicated. The footprint environmental sensitivities for the proposed development footprint as identified, are indicative only and must be verified on site by a suitably qualified person before the specialist assessments identified below can be confirmed.

Theme	Very High sensitivity	High sensitivity	Medium sensitivity	Low sensitivity
Agriculture Theme		X		
Animal Species Theme		X		
Aquatic Biodiversity Theme				X
Archaeological and Cultural Heritage Theme				X
Civil Aviation Theme		X		
Defence Theme			X	
Paleontology Theme				X
Plant Species Theme		X		

Terrestrial Biodiversity Theme	X			
--------------------------------	---	--	--	--

Specialist assessments identified

Based on the selected classification, and the known impacts associated with the proposed development, the following list of specialist assessments have been identified for inclusion in the assessment report. It is the responsibility of the EAP to confirm this list and to motivate in the assessment report, the reason for not including any of the identified specialist study including the provision of photographic evidence of the site situation.

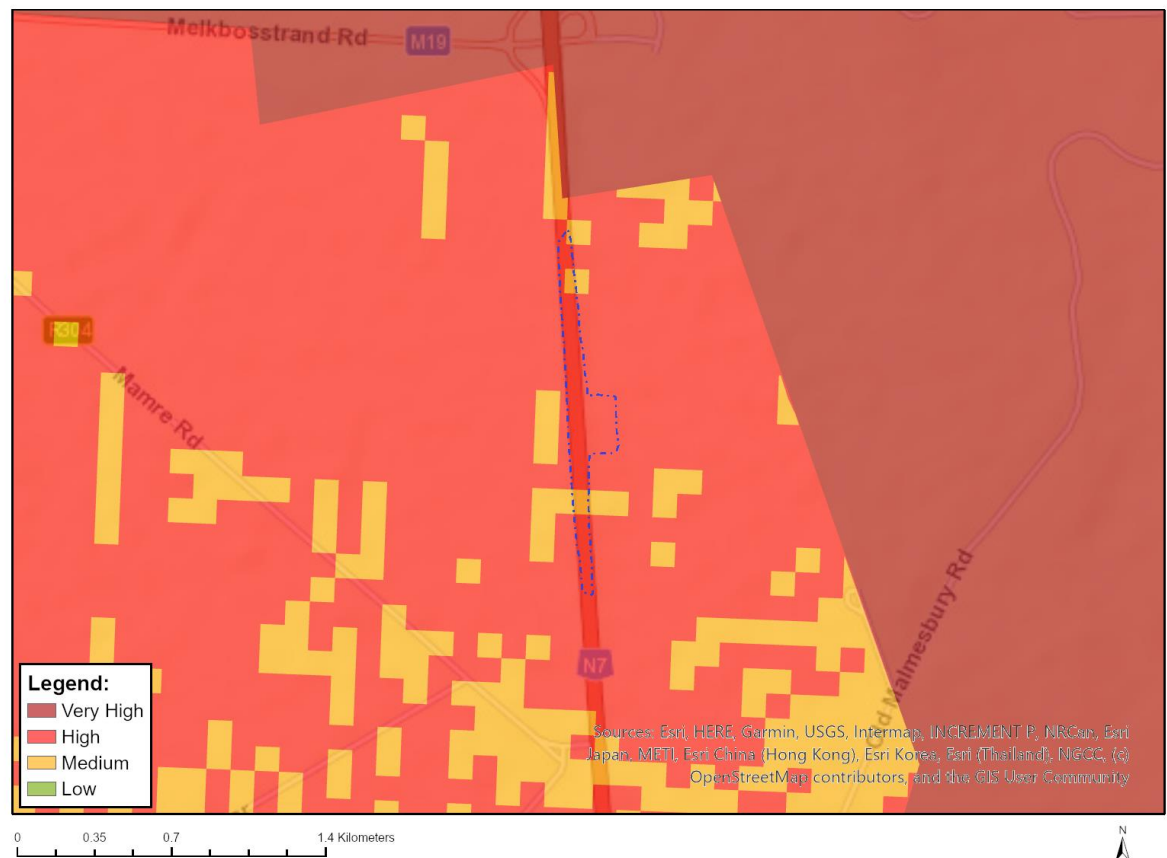
No	Specialist assessment	Assessment Protocol
1	Agricultural Impact Assessment	https://screening.environment.gov.za/ScreeningDownloads/AssessmentProtocols/Gazetted_General_Agriculture_Assessment_Protocols.pdf
2	Landscape/Visual Impact Assessment	https://screening.environment.gov.za/ScreeningDownloads/AssessmentProtocols/Gazetted_General_Requirement_Assessment_Protocols.pdf
3	Archaeological and Cultural Heritage Impact Assessment	https://screening.environment.gov.za/ScreeningDownloads/AssessmentProtocols/GuidanceforHIA.pdf
4	Palaeontology Impact Assessment	https://screening.environment.gov.za/ScreeningDownloads/AssessmentProtocols/GuidanceforPIA.pdf
5	Terrestrial Biodiversity Impact Assessment	https://screening.environment.gov.za/ScreeningDownloads/AssessmentProtocols/Gazetted_Terrestrial_Biodiversity_Assessment_Protocols.pdf
6	Aquatic Biodiversity Impact Assessment	https://screening.environment.gov.za/ScreeningDownloads/AssessmentProtocols/Gazetted_Aquatic_Biodiversity_Assessment_Protocols.pdf
7	Noise Impact Assessment	https://screening.environment.gov.za/ScreeningDownloads/AssessmentProtocols/Gazetted_Noise_Impacts_Assessment_Protocol.pdf
8	Traffic Impact Assessment	https://screening.environment.gov.za/ScreeningDownloads/AssessmentProtocols/Gazetted_General_Requirement_Assessment_Protocols.pdf
9	Geotechnical Assessment	https://screening.environment.gov.za/ScreeningDownloads/AssessmentProtocols/Gazetted_General_Requirement_Assessment_Protocols.pdf
10	Socio-Economic Assessment	https://screening.environment.gov.za/ScreeningDownloads/AssessmentProtocols/Gazetted_General_Requirement_Assessment_Protocols.pdf
11	Ambient Air Quality Impact Assessment	https://screening.environment.gov.za/ScreeningDownloads/AssessmentProtocols/Gazetted_General_Requirement_Assessment_Protocols.pdf
12	Plant Species Assessment	https://screening.environment.gov.za/ScreeningDownloads/AssessmentProtocols/Gazetted_Plant_Species_Assessment_Protocols.pdf
13	Animal Species Assessment	https://screening.environment.gov.za/ScreeningDownloads/AssessmentProtocols/Gazetted_Animal_Species_Assessment_Protocols.pdf

OFFICIAL

Results of the environmental sensitivity of the proposed area.

The following section represents the results of the screening for environmental sensitivity of the proposed site for relevant environmental themes associated with the project classification. It is the duty of the EAP to ensure that the environmental themes provided by the screening tool are comprehensive and complete for the project. Refer to the disclaimer.

MAP OF RELATIVE AGRICULTURE THEME SENSITIVITY

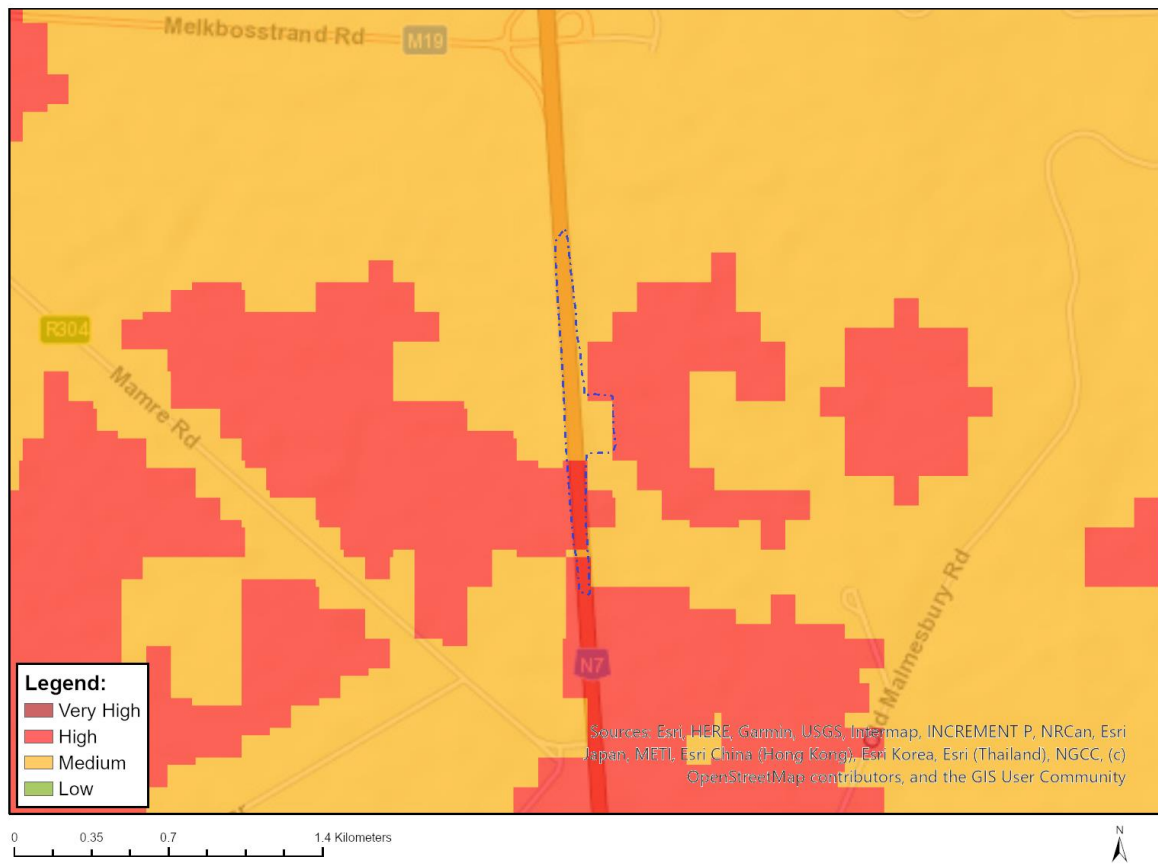


Very High sensitivity	High sensitivity	Medium sensitivity	Low sensitivity
	X		

Sensitivity Features:

Sensitivity	Feature(s)
High	10. Moderate-High
High	09. Moderate-High
High	08. Moderate
Medium	07. Low-Moderate

MAP OF RELATIVE ANIMAL SPECIES THEME SENSITIVITY



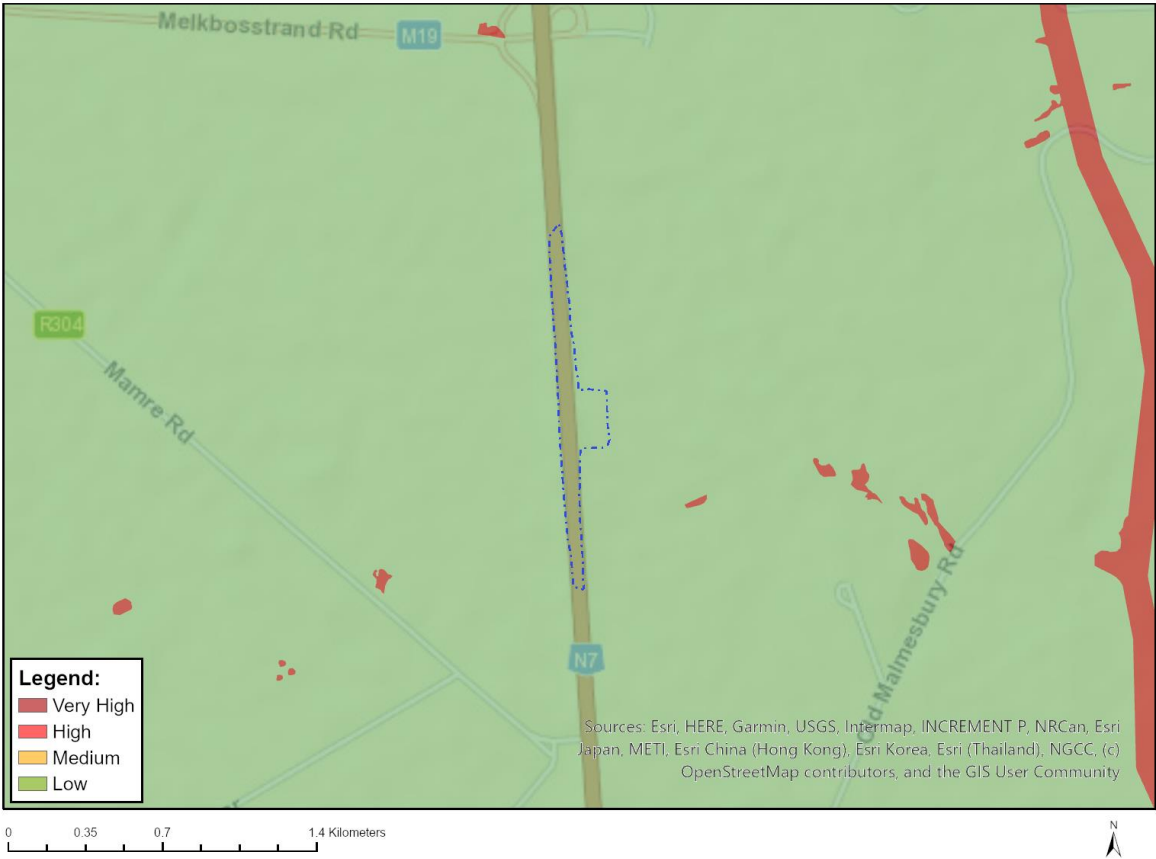
Where only a sensitive plant unique number or sensitive animal unique number is provided in the screening report and an assessment is required, the environmental assessment practitioner (EAP) or specialist is required to email SANBI at eiadatarequests@sanbi.org.za listing all sensitive species with their unique identifiers for which information is required. The name has been withheld as the species may be prone to illegal harvesting and must be protected. SANBI will release the actual species name after the details of the EAP or specialist have been documented.

Very High sensitivity	High sensitivity	Medium sensitivity	Low sensitivity
	X		

Sensitivity Features:

Sensitivity	Feature(s)
High	Aves-Circus ranivorus
High	Aves-Circus maurus
High	Aves-Sagittarius serpentarius
Medium	Invertebrate-Pachysoma aesculapius
Medium	Invertebrate-Bullacris obliqua

MAP OF RELATIVE AQUATIC BIODIVERSITY THEME SENSITIVITY

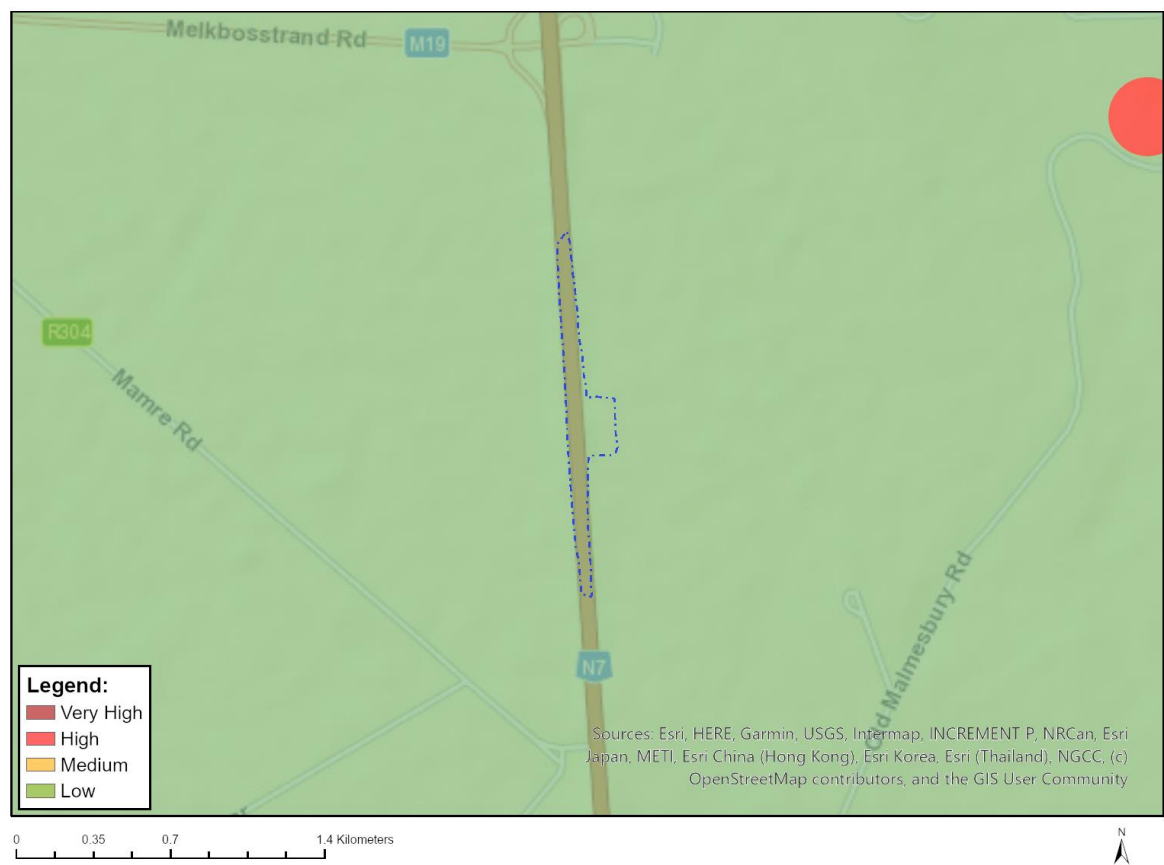


Very High sensitivity	High sensitivity	Medium sensitivity	Low sensitivity
			X

Sensitivity Features:

Sensitivity	Feature(s)
Low	Low Sensitivity

MAP OF RELATIVE ARCHAEOLOGICAL AND CULTURAL HERITAGE THEME SENSITIVITY

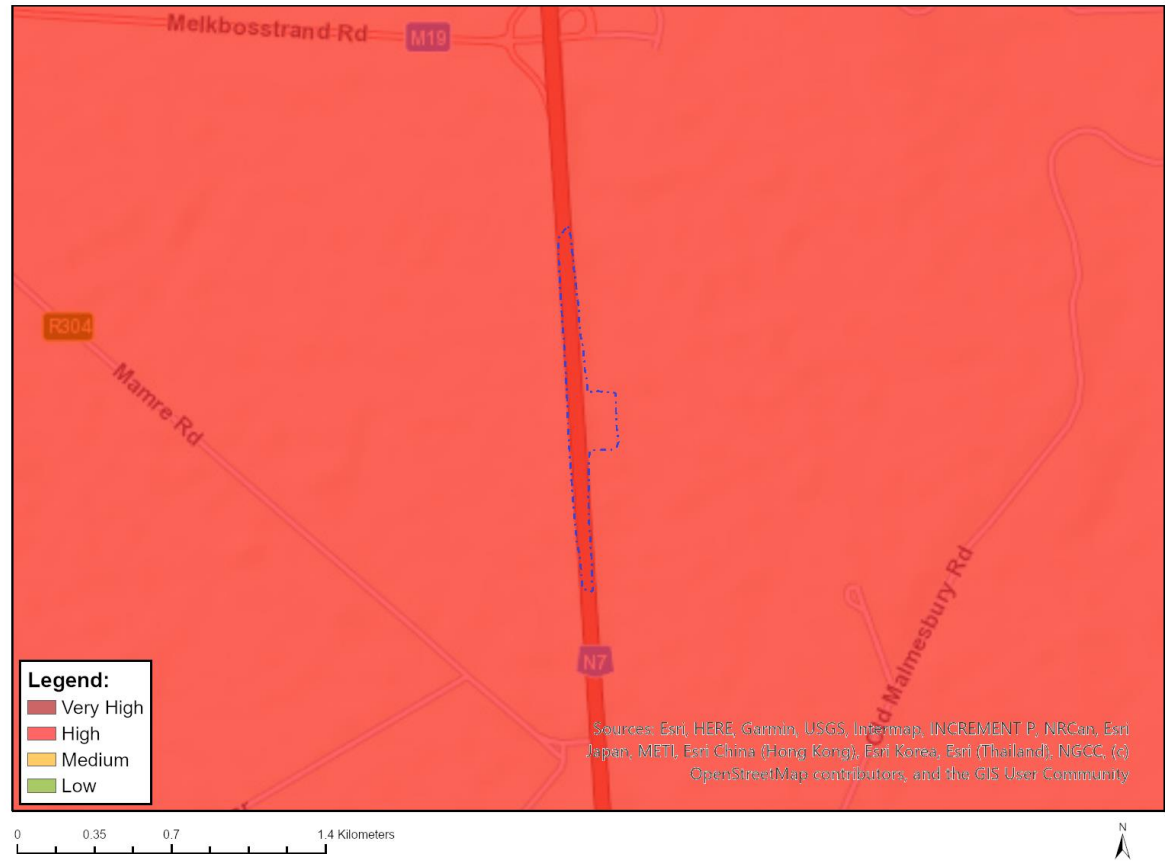


Very High sensitivity	High sensitivity	Medium sensitivity	Low sensitivity
			X

Sensitivity Features:

Sensitivity	Feature(s)
Low	Low Sensitivity

MAP OF RELATIVE CIVIL AVIATION THEME SENSITIVITY

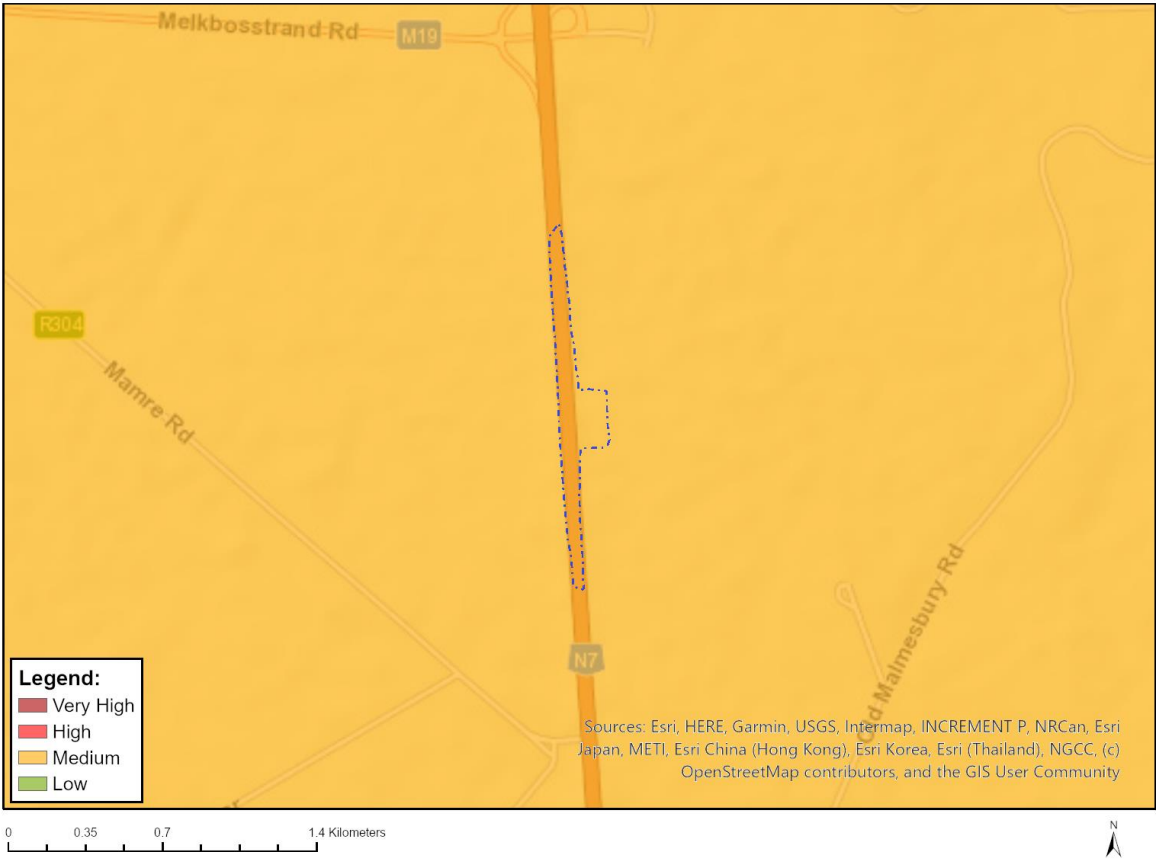


Very High sensitivity	High sensitivity	Medium sensitivity	Low sensitivity
	X		

Sensitivity Features:

Sensitivity	Feature(s)
High	Within 8 km of other civil aviation aerodrome
Medium	Between 15 and 35 km from a civil aviation radar
Medium	Between 15 and 35 km from a major civil aviation aerodrome

MAP OF RELATIVE DEFENCE THEME SENSITIVITY

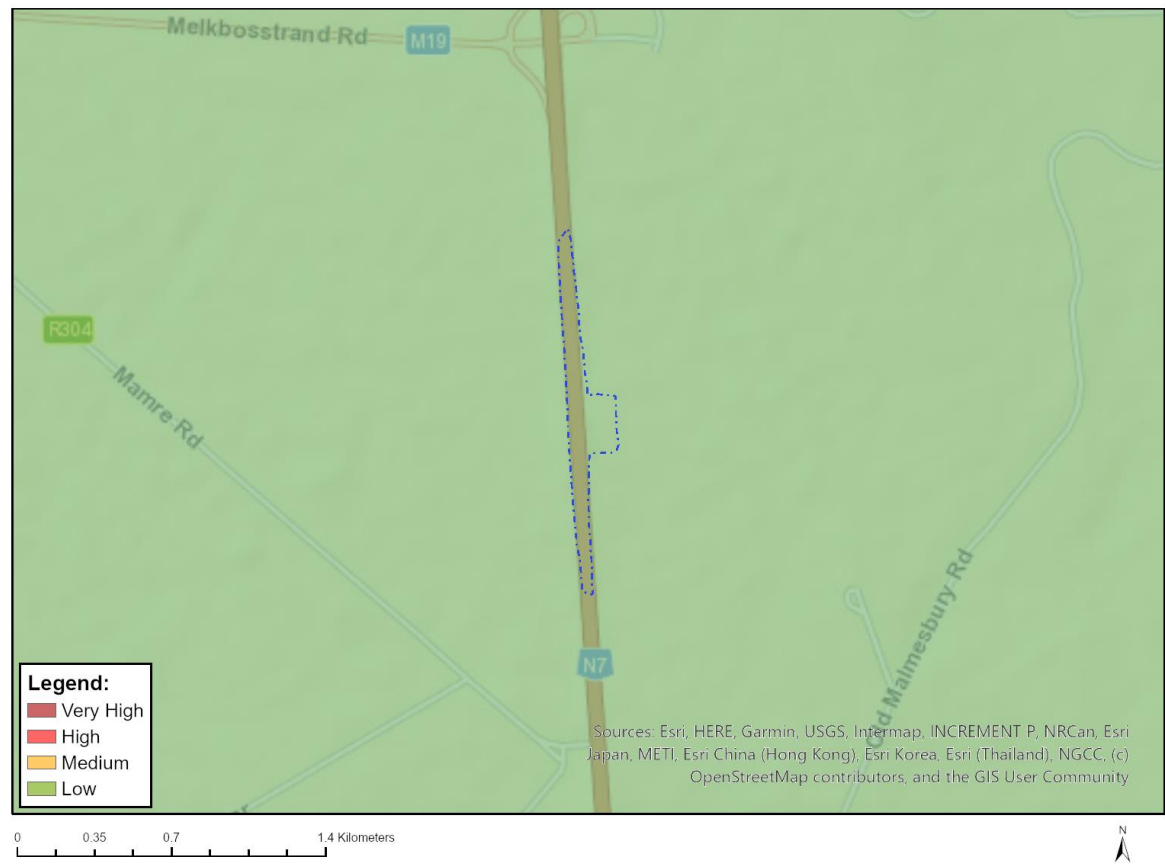


Very High sensitivity	High sensitivity	Medium sensitivity	Low sensitivity
		X	

Sensitivity Features:

Sensitivity	Feature(s)
Medium	Military and Defence Site

MAP OF RELATIVE PALEONTOLOGY THEME SENSITIVITY



Very High sensitivity	High sensitivity	Medium sensitivity	Low sensitivity
			X

Sensitivity Features:

Sensitivity	Feature(s)
Low	Features with a Low paleontological sensitivity

MAP OF RELATIVE PLANT SPECIES THEME SENSITIVITY



Where only a sensitive plant unique number or sensitive animal unique number is provided in the screening report and an assessment is required, the environmental assessment practitioner (EAP) or specialist is required to email SANBI at eiadatarequests@sanbi.org.za listing all sensitive species with their unique identifiers for which information is required. The name has been withheld as the species may be prone to illegal harvesting and must be protected. SANBI will release the actual species name after the details of the EAP or specialist have been documented.

Very High sensitivity	High sensitivity	Medium sensitivity	Low sensitivity
	X		

Sensitivity Features:

Sensitivity	Feature(s)
High	Leucadendron thymifolium
Medium	Lampranthus amoenus
Medium	Lampranthus dilutus
Medium	Lampranthus filicaulis
Medium	Lampranthus leptaleon
Medium	Lampranthus peacockiae
Medium	Lampranthus scaber
Medium	Lampranthus sociorum
Medium	Lampranthus spiniformis
Medium	Lampranthus stenopetalus
Medium	Lampranthus stenus
Medium	Lampranthus tenuifolius
Medium	Antimima mucronata

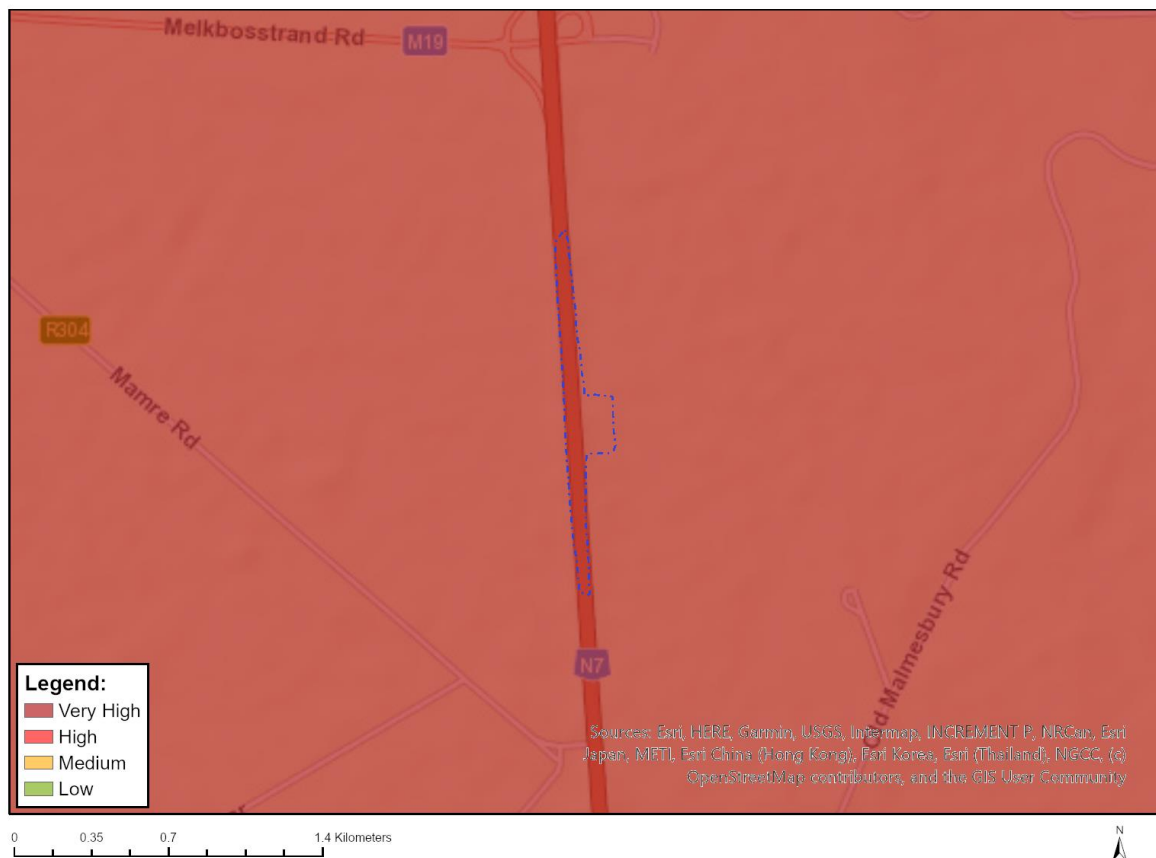
Medium	<i>Antimima aristulata</i>
Medium	<i>Erepsia patula</i>
Medium	<i>Erepsia ramosa</i>
Medium	<i>Cleretum clavatum</i>
Medium	<i>Ruschia diversifolia</i>
Medium	<i>Ruschia geminiflora</i>
Medium	<i>Ruschia tecta</i>
Medium	<i>Drosanthemum hispifolium</i>
Medium	<i>Cephalophyllum parviflorum</i>
Medium	<i>Lessertia argentea</i>
Medium	<i>Amphithalea ericifolia</i> subsp. <i>erecta</i>
Medium	<i>Xiphotheca lanceolata</i>
Medium	<i>Psoralea glaucina</i>
Medium	<i>Indigofera psoraloides</i>
Medium	<i>Aspalathus acanthophylla</i>
Medium	<i>Aspalathus aculeata</i>
Medium	<i>Aspalathus araneosa</i>
Medium	<i>Aspalathus lotoides</i> subsp. <i>lotoides</i>
Medium	<i>Aspalathus muraltioides</i>
Medium	<i>Aspalathus retroflexa</i> subsp. <i>bicolor</i>
Medium	<i>Aspalathus varians</i>
Medium	<i>Rafnia lancea</i>
Medium	<i>Rafnia angulata</i> subsp. <i>humilis</i>
Medium	<i>Rafnia angulata</i> subsp. <i>ericifolia</i>
Medium	<i>Lebeckia plukenetiana</i>
Medium	<i>Podalyria argentea</i>
Medium	<i>Podalyria microphylla</i>
Medium	<i>Podalyria sericea</i>
Medium	<i>Thesium ecklonianum</i>
Medium	<i>Leucadendron cinereum</i>
Medium	<i>Leucadendron lanigerum</i> var. <i>lanigerum</i>
Medium	<i>Leucadendron levisanus</i>
Medium	<i>Leucadendron stellare</i>
Medium	<i>Leucadendron thymifolium</i>
Medium	<i>Leucospermum hypophyllocarpodendron</i> subsp. <i>canaliculatum</i>
Medium	<i>Leucospermum hypophyllocarpodendron</i> subsp. <i>hypophyllocarpodendron</i>
Medium	<i>Protea burchellii</i>
Medium	<i>Diastella proteoides</i>
Medium	<i>Serruria aemula</i>
Medium	<i>Serruria brownii</i>
Medium	<i>Serruria trilopha</i>
Medium	<i>Microdon capitatus</i>
Medium	<i>Manulea corymbosa</i>
Medium	<i>Pentameris bachmannii</i>
Medium	<i>Pentameris pholiuroides</i>
Medium	<i>Anthospermum ericifolium</i>
Medium	<i>Lobostemon capitatus</i>
Medium	<i>Echiostachys incanus</i>
Medium	<i>Echiostachys spicatus</i>
Medium	<i>Hesperantha spicata</i> subsp. <i>spicata</i>
Medium	Sensitive species 14
Medium	Sensitive species 267
Medium	Sensitive species 631
Medium	Sensitive species 533
Medium	Sensitive species 878
Medium	<i>Geissorhiza brehmii</i>
Medium	<i>Geissorhiza furva</i>
Medium	<i>Geissorhiza humilis</i>
Medium	<i>Geissorhiza monanthos</i>
Medium	<i>Geissorhiza radians</i>

Medium	Geissorhiza setacea
Medium	Geissorhiza erosa
Medium	Ixia monadelpha
Medium	Sensitive species 881
Medium	Sensitive species 683
Medium	Sensitive species 560
Medium	Sensitive species 816
Medium	Sensitive species 1
Medium	Sensitive species 830
Medium	Sensitive species 1140
Medium	Sensitive species 995
Medium	Sensitive species 863
Medium	Pauridia alba
Medium	Pauridia canaliculata
Medium	Pauridia pygmaea
Medium	Pseudalthenia aschersoniana
Medium	Oxalis falcata
Medium	Oxalis natans
Medium	Erica bolusiae var. bolusiae
Medium	Stylapterus fruticosus
Medium	Hermannia procumbens subsp. procumbens
Medium	Hermannia rugosa
Medium	Sensitive species 769
Medium	Sensitive species 222
Medium	Sebaea rara
Medium	Sensitive species 444
Medium	Sensitive species 493
Medium	Sensitive species 478
Medium	Sensitive species 756
Medium	Adenogramma rigida
Medium	Wachendorfia brachyandra
Medium	Hessea cinnamomea
Medium	Sensitive species 133
Medium	Isolepis inconspicua
Medium	Isolepis venustula
Medium	Trianoptiles solitaria
Medium	Cannomois arenicola
Medium	Elegia prominens
Medium	Hypodiscus rugosus
Medium	Restio duthieae
Medium	Restio micans
Medium	Restio impolitus
Medium	Restio papillosus
Medium	Anisodonteia biflora
Medium	Cynanchum zeyheri
Medium	Sensitive species 985
Medium	Sensitive species 120
Medium	Sensitive species 266
Medium	Pterygodium cruciferum
Medium	Pterygodium inversum
Medium	Pterygodium microglossum
Medium	Gnidia spicata
Medium	Passerina paludosa
Medium	Lachnaea uniflora
Medium	Metalasia capitata
Medium	Metalasia octoflora
Medium	Marasmodes fasciculata
Medium	Steirodiscus tagetes
Medium	Senecio foeniculoides
Medium	Senecio cadiscus

Medium	<i>Cotula eckloniana</i>
Medium	<i>Athanasia capitata</i>
Medium	<i>Athanasia rugulosa</i>
Medium	<i>Arctotis angustifolia</i>
Medium	Sensitive species 1042
Medium	<i>Arctotheca forbesiana</i>
Medium	<i>Heterorhachis aculeata</i>
Medium	<i>Diosma dichotoma</i>
Medium	<i>Agathosma corymbosa</i>
Medium	<i>Agathosma glabrata</i>
Medium	<i>Adenandra villosa</i> subsp. <i>biseriata</i>
Medium	<i>Macrostylis cassiopoides</i> subsp. <i>dregeana</i>
Medium	<i>Macrostylis villosa</i> subsp. <i>villosa</i>
Medium	<i>Cliffortia ericifolia</i>
Medium	<i>Cliffortia hirta</i>
Medium	<i>Limonium depauperatum</i>
Medium	<i>Limonium purpuratum</i>
Medium	<i>Muraltia brevicornu</i>
Medium	<i>Muraltia decipiens</i>
Medium	<i>Muraltia macropetala</i>
Medium	<i>Muraltia mitior</i>
Medium	Sensitive species 262
Medium	Sensitive species 1135
Medium	Sensitive species 158
Medium	Sensitive species 1265
Medium	Sensitive species 616
Medium	<i>Wurmbea hiemalis</i>
Medium	<i>Wurmbea inusta</i>
Medium	<i>Phylica harveyi</i>
Medium	<i>Phylica plumosa</i> var. <i>squarrosa</i>
Medium	<i>Phylica stenopetala</i> var. <i>stenopetala</i>
Medium	<i>Phylica strigulosa</i>
Medium	<i>Phylica thunbergiana</i>
Medium	<i>Ezoloba macrocarpa</i>
Medium	<i>Codonorhiza azurea</i>
Medium	<i>Skiatophytum skiatophytoides</i>
Medium	<i>Lampranthus debilis</i>
Medium	<i>Lampranthus glaucus</i>
Medium	<i>Drosanthemum striatum</i>
Medium	<i>Argyrolobium velutinum</i>
Medium	<i>Xiphotheca reflexa</i>
Medium	<i>Psoralea alata</i>
Medium	<i>Aspalathus lebeckioides</i>
Medium	<i>Aspalathus recurva</i>
Medium	<i>Aspalathus tylodes</i>
Medium	<i>Aponogeton fugax</i>
Medium	<i>Leucospermum rodolentum</i>
Medium	<i>Protea scolymocephala</i>
Medium	Sensitive species 593
Medium	Sensitive species 335
Medium	Sensitive species 599
Medium	<i>Elegia squamosa</i>
Medium	<i>Elegia verreauxii</i>
Medium	<i>Restio paludosus</i>
Medium	<i>Restio rigoratus</i>
Medium	Sensitive species 500
Medium	Sensitive species 654
Medium	<i>Lachnaea capitata</i>
Medium	<i>Lachnaea grandiflora</i>
Medium	<i>Cotula pusilla</i>

Medium	Sensitive species 1225
Medium	Caesia sabulosa

MAP OF RELATIVE TERRESTRIAL BIODIVERSITY THEME SENSITIVITY



Very High sensitivity	High sensitivity	Medium sensitivity	Low sensitivity
X			

Sensitivity Features:

Sensitivity	Feature(s)
Very High	CBA 1a
Very High	CBA 1c
Very High	ESA 2
Very High	CR_Cape Flats Sand Fynbos