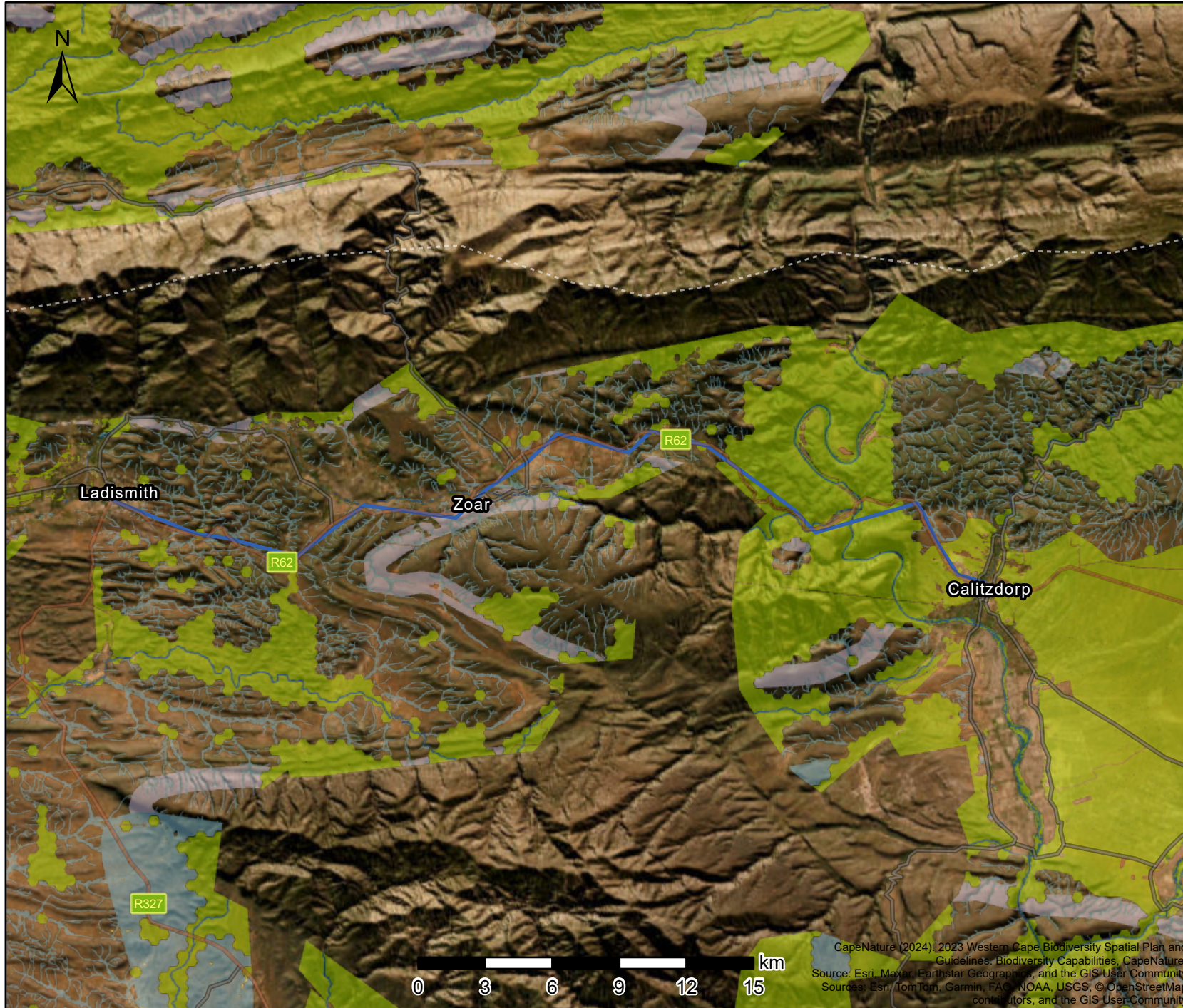


# Critical Biodiversity Areas Map



## Legend

### Ecological Support Areas (Restore)

ESA 2: Restore from other land use

### Ecological Support Areas

ESA 1: Aquatic

ESA 1: Terrestrial

### Critical Biodiversity Areas

CBA: River

CBA: Terrestrial

CBA: Wetland

### Critical Biodiversity Areas (Degraded)

CBA2: Aquatic

CBA2: Terrestrial

Map Center: Lon: 21°30'E  
Lat: 33°29'56.1"S

Scale: 1:288,895

Date created: 2025/18/11



Western Cape  
Government  
FOR YOU

CapeNature (2024). 2023 Western Cape Biodiversity Spatial Plan and Guidelines: Biodiversity Capabilities, CapeNature. Source: Esri, Maxar, Earthstar Geographics, and the GIS User Community Sources: Esri, TomTom, Garmin, FAO, NOAA, USGS, © OpenStreetMap contributors, and the GIS User Community