



---

**NICK HELME BOTANICAL SURVEYS**

PO Box 22652 Scarborough 7975

Ph: 021 780 1420 cell: 082 82 38350 email: botaneek@iafrica.com

Pri.Sci.Nat # 400045/08

---

**BOTANICAL ASSESSMENT OF PROPOSED  
NEW N7 WEIGHBRIDGE, VISSERSHOK,  
CAPE TOWN.**

Compiled for: Sharples Environmental Services, Milnerton

Client: Transport Management Branch – Department of Transport  
and Public Works.

1 December 2025

## **DECLARATION OF INDEPENDENCE**

In terms of Chapter 5 of the National Environmental Management Act of 1998 specialists involved in Impact Assessment processes must declare their independence and include an abbreviated Curriculum Vitae.

I, N.A. Helme, do hereby declare that I am financially and otherwise independent of the client and their consultants, and that all opinions expressed in this document are substantially my own.



NA Helme

## **ABRIDGED CV:**

Contact details as per letterhead.

Surname : HELME

First names : NICHOLAS ALEXANDER

Date of birth : 29 January 1969

University of Cape Town, South Africa. BSc (Honours) – Botany (Ecology & Systematics), 1990.

Since 1997 I have been based in Cape Town, and have been working as a specialist botanical consultant, specialising in the diverse flora of the south-western Cape. Since the end of 2001 I have been the Sole Proprietor of Nick Helme Botanical Surveys, and have undertaken over 1700 site assessments in this period.

A selection of relevant previous botanical work is as follows:

- Botanical assessment of Ptn 1 of Misty Cliffs 974 (Infinity Environmental 2025)
- Cape Winelands Airport Vegetation IA (PHS Consulting 2025)
- Botanical assessment erf 666, Hout Bay (Monique Sham Consultants 2024)
- Botanical assessment of Ptns 31 & 33 Hazendal (Monique Sham Consultants 2024)
- Botanical constraints on Kransduinen 791, Mamre (UrbanEye 2024)
- Cape Winelands Airport Vegetation Scoping report (PHS Consulting 2023)

- Botanical assessment of Zeekoevlei weir upgrades (Infinity Environmental 2022)
- Botanical assessment of proposed development on Ptn 29 of Farm 410 Caledon (PHS Consulting 2022)
- Botanical assessment of proposed development on Ptn 10 of Broken Hill 88, Heidelberg (Isikhova 2021)
- Botanical assessment of Ptns 3 & 6 of Farm 563 Kleinmond (Lornay Environmental 2021)
- Botanical assessment of Ptn 9 of Farm 429 Gabrielskloof, Caledon (Infinity Environmental 2021)
- Baseline ecological assessment of Karwyderskraal 584, Caledon (Terramanzi 2021)
- Botanical impact assessment of proposed development of Ptn 29 of Farm 410, Caledon (PHS Consulting 2021)
- Botanical assessment of proposed new cultivation on Welbedacht farm, Tra Tra Mountains (Footprint Environmental 2020)
- Biodiversity Compliance Statement - Philippi erf 1/1460 (Infinity Environmental 2020)
- Botanical assessment of Kleinmond WWTW expansion (Aurecon 2020)
- Botanical assessment of Mooresburg WWTW expansion (Aurecon 2020)
- Botanical assessment of Struisbaai cemetery sites (Infinity Environmental 2020)
- Botanical assessment of MoPama development site, Swellendam (Landscape Dynamics 2020)
- Botanical assessment of Ptn of Rem of Erf 1 Caledon (Theewaterskloof Municipality 2019)
- Botanical assessment of proposed new cultivation on Portion of Wittewater 148, Piketberg (Cornerstone Environmental 2019)
- Botanical assessment of Droogerivier farm Leipoldville (Footprint Environmental 2018)
- Botanical assessment of Sebulon farm, Redelinghuys (Natura Libra Environmental Services 2018)
- Botanical assessment of proposed new cultivation on Ptn 2 of farm Groenevalley 155, Piketberg (Cederberg Environmental Assessment Practise 2017)
- Botanical assessment of proposed new cultivation on farm Rosendal, Koue Bokkeveld (Cederberg Environmental Assessment Practise 2016)

**CONDITIONS RELATING TO THIS REPORT:**

The methodology, findings, results, conclusions and recommendations in this report are based on the author's best scientific and professional knowledge, and on referenced material and available knowledge. Nick Helme Botanical Surveys and its staff reserve the right to modify aspects of the report, including the recommendations and conclusions, if and when additional relevant information becomes available.

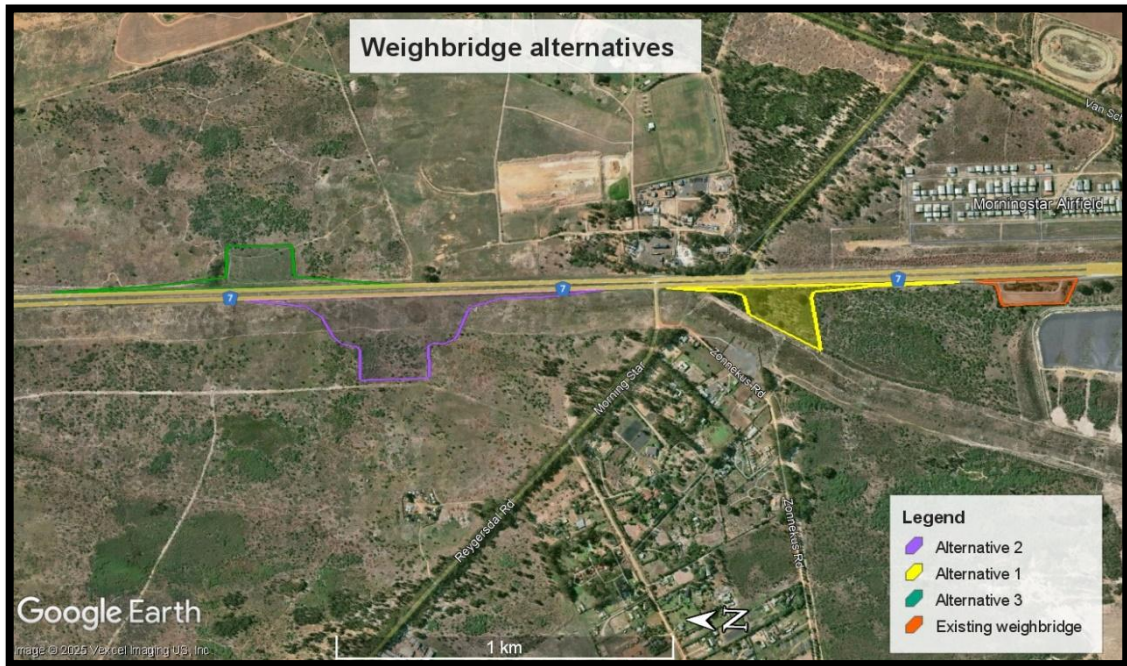
This report may not be altered or added to without the prior written consent of the author, and this also applies to electronic copies of this report, which are supplied for purposes of inclusion in other reports, including in the report of EAPs. Any recommendations, statements or conclusions drawn from or based on this report must cite this report, and should not be taken out of context, and may not change, alter or distort the intended meaning of the original in any way. If these extracts or summaries form part of a main report relating to this study or investigation this report must be included in its entirety as an appendix or separate section to the main report.

**TABLE OF CONTENTS**

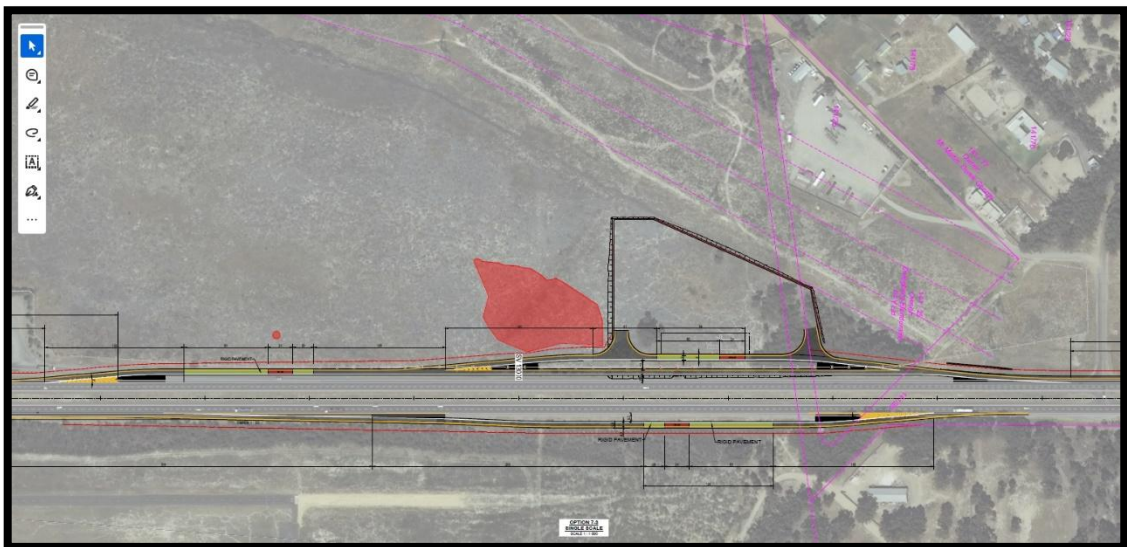
<b>1.</b>	<b>INTRODUCTION</b>	<b>1</b>
<b>2.</b>	<b>TERMS OF REFERENCE</b>	<b>2</b>
<b>3.</b>	<b>LIMITATIONS, ASSUMPTIONS AND METHODOLOGY</b>	<b>2</b>
<b>4.</b>	<b>REGIONAL CONTEXT OF THE VEGETATION</b>	<b>3</b>
<b>5.</b>	<b>THE VEGETATION AND ITS SENSITIVITY</b>	<b>5</b>
<b>6.</b>	<b>IMPACT ASSESSMENT</b>	<b>13</b>
<b>7.</b>	<b>REQUIRED MITIGATION</b>	<b>16</b>
<b>8.</b>	<b>RECOMMENDATIONS &amp; CONCLUSIONS</b>	<b>17</b>
<b>9.</b>	<b>REFERENCES</b>	<b>18</b>

## 1. INTRODUCTION

This botanical assessment was requested to inform the environmental planning and authorisation process being followed for the potential development of a new weighbridge along the outbound side of the N7 in the Vissershok area of the City of Cape Town, Western Cape (see Figure 1 for study area). Two new layout (site) alternatives were added in late 2025, and have been added to the assessment.



**Figure 1:** Satellite image showing the location of the three layout alternatives, in relation to the existing N7 weighbridge. Satellite image dated April 2024.



**Figure 1b:** Layout 1 as assessed, with mapped areas of High botanical conservation value shaded red.

## **2. TERMS OF REFERENCE**

The terms of reference for this study were as follows:

- Undertake a site visit to assess the vegetation in the study area
- Identify and describe the vegetation in the study area and place it in a regional context, including its status in terms of the City of Cape Town Biodiversity Network (CBA/ESA/ONA, etc)
- Identify and locate any (likely) plant Species of Conservation Concern in the study areas, based on observation, literature and iNaturalist website review
- Provide an overview and map of the botanical conservation significance (sensitivity) of the sites
- Identify and assess (according to standard IA methodology) the potential impacts of the project including impacts associated with the construction and operational phases
- Indicate the acceptability of the project proposal from a botanical perspective and identify the preferred alternatives
- Identify and describe the potential cumulative impacts of the proposed subdivision in relation to proposed and existing developments in the surrounding area
- Recommend mitigation measures to avoid and/or minimise impacts and/or optimise benefits associated with the proposed project.
- Discuss the potential rehabilitation of the current site.

## **3. LIMITATIONS, ASSUMPTIONS AND METHODOLOGY**

The primary site visit was undertaken on 19 May 2023, with a brief follow-up on 25 March 2025 to check the final proposed layout footprint, which includes a widening of the N7 on the inbound side of the highway (not part of the original proposal). In this approximately 700m long inbound section a strip up to about 12m wide will be impacted, as measured from the current hardened verge edge, but it tapers and narrows at both the north and south ends, and this total inbound footprint is thus about 0.8ha. The footprint of the northbound facility is about 2.5ha. Two new alternative areas were proposed in late 2025, and these were surveyed on 30 November 2025.

The primary site visit was early in the optimal winter – spring flowering season in this mainly winter rainfall area, and most (but not all) of the likely geophytes were thus not yet flowering (and few were evident and identifiable), whilst all perennial plants were identifiable. The survey of the two newer alternatives

(Alternatives 2 and 3) was undertaken well outside the optimal season, but this was of little relevance as both sites are heavily disturbed and of low botanical diversity, and are dominated by a predictable suite of alien invasives and resilient indigenous species. There were thus some minor seasonal constraints on the accuracy of the botanical findings, but given the heavy dominance of perennials in this area – which in a Fynbos system can usually be used as indicators of habitat sensitivity - the confidence in the accuracy of the botanical findings is high. The author has undertaken extensive work within the region, which facilitates the making of local and regional comparisons and inferences of habitat quality and conservation value.

The study areas were walked, and all plants on site were noted. Photographs of some of the key species were made using a Fuji mirrorless slr camera, and have been uploaded to the biodiversity website iNaturalist.org. Satellite imagery dated April 2024 (and earlier) was used to inform this assessment, and for mapping. It is assumed that development of any hard surfaces would result in the permanent loss of all natural or partly natural vegetation in that area.

The botanical sensitivity of a site is a product of plant species diversity, plant community composition, rarity of habitat, degree of habitat degradation, rarity of species, ecological viability and connectivity, restorability of habitat, vulnerability to impacts, and reversibility of threats.

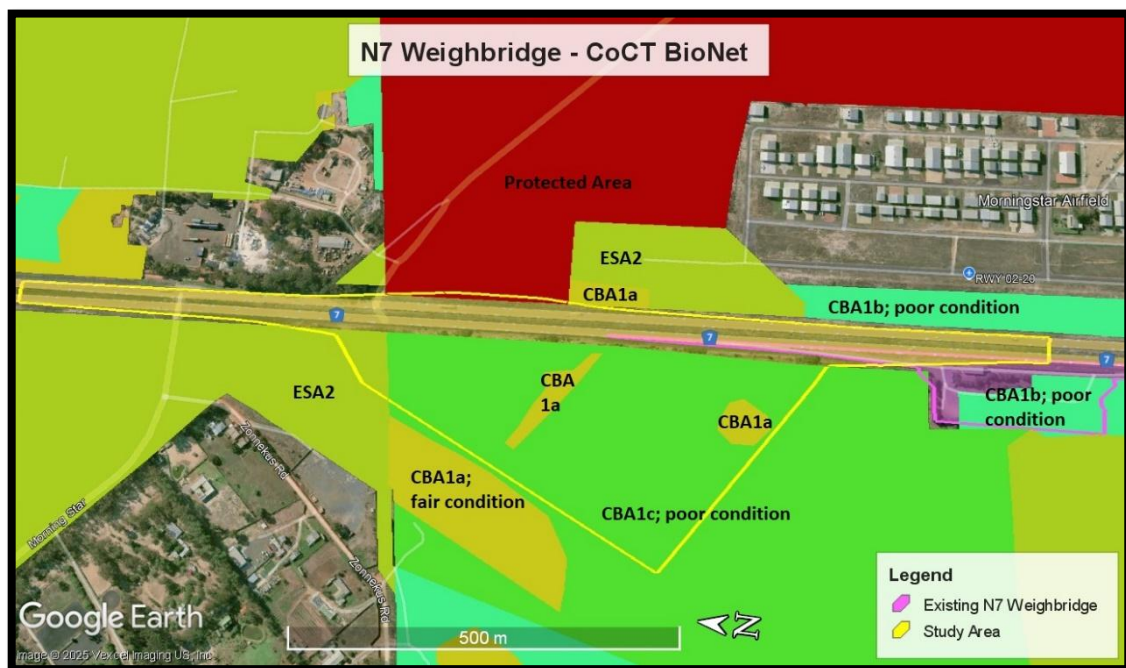
The meaning of the No Go alternative in this case is assumed to mean no new development, but also minimal alien invasive vegetation management in the study area, and other potential future development.

#### **4. REGIONAL CONTEXT OF THE VEGETATION**

The study area is part of the Southwest Fynbos bioregion (Mucina & Rutherford 2006), and is part of the Fynbos biome, located within what is now known as the Core Region of the Greater Cape Floristic Region (GCFR; Manning & Goldblatt 2012). The GCFR is one of only six Floristic Regions in the world, and is the only one largely confined to a single country (the Succulent Karoo component extends into southern Namibia). It is also by far the smallest floristic region, occupying only 0.2% of the world's land surface, and supporting about 11500 plant species, over half of all the plant species in South Africa (on 12% of the land area). At least 70% of all the species in the Cape region do not occur elsewhere, and many have very small home ranges (these are known as narrow endemics). Many of the lowland habitats are under pressure from agriculture,

urbanisation and alien plants, and thus many of the range restricted species are also under severe threat of extinction, as habitat is reduced to extremely small fragments. Data from the nationwide plant Red Listing project indicate that 67% of the threatened plant species in the country occur only in the southwestern Cape, and these total over 1800 species (Raimondo *et al* 2009). It should thus be clear that the southwestern Cape is a major national and global conservation priority, and is quite unlike anywhere else in the country in terms of the number of threatened plant species.

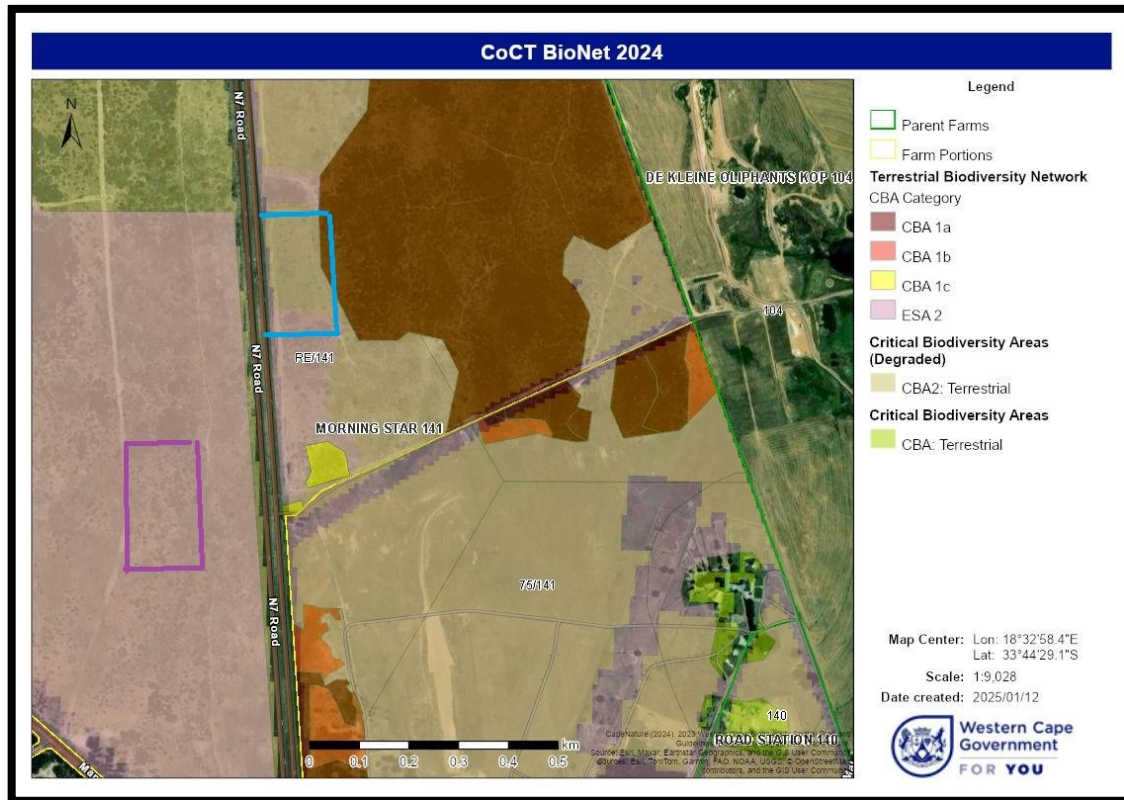
The Southwest Fynbos bioregion is characterised by relatively high winter rainfall, strong rainfall gradients, poor, sandy soils, high topographic diversity, and large urban areas and high levels of alien invasive vegetation. Due to this combination of factors the loss of natural vegetation in this bioregion has been severe (>60% of original extent lost within the region), and the bioregion has a very high number of threatened plant species (Raimondo *et al* 2009).



**Figure 3:** Extract of the City of Cape Town BioNet (2023) for the Alternative 1 study area, showing that CBA1c (poor condition) vegetation is mapped for most of this study area, but also with two patches of higher priority CBA1a (fair condition) patch within the study area. This map has fair congruence with the groundtruthed sensitivity map shown in Figure 4.

The City of Cape Town Biodiversity Network (see Figure 3) shows that CBA1c (poor condition) vegetation is mapped for most of the Alternative 1 target area, but also with two higher priority CBA1a (fair condition) patches within the area.

The area including the N7 road reserve is mapped as No Natural Vegetation. A formally Protected Area has recently been declared by the City north of Morningstar Airfield, and this extends up to the current N7 road reserve, and a small portion of this falls within the proposed eastern development area. This map has fair congruence with the groundtruthed sensitivity map shown in Figure 4.



**Figure 3b:** Extract of the City of Cape Town BioNet (2024) for Alternatives 2 (purple box) & Alternative 3 (blue box) study areas. Alternative 2 is mapped as ESA 2 (degraded) and Alternative 3 as ESDA 2 (degraded), CBA2 (degraded) and a small section on the eastern side as CBA1 (terrestrial).

## 5. THE VEGETATION AND ITS SENSITIVITY

According to the SA Vegetation Map the original natural vegetation in the study area is all **Cape Flats Sand Fynbos** (Mucina & Rutherford 2024). Based on my ground-truthing I agree with this, and no copy of the vegetation map is provided as it adds little value.

**Cape Flats Sand Fynbos** is now gazetted as **Critically Endangered** on a national basis (Government of South Africa 2022), with less than 18% of its total original extent remaining intact, less than 1% conserved, and an unreachable national conservation target of 30% (Rouget *et al* 2004). The unit supports a very

high number of threatened and endemic plant species, and occurs on deep, nutrient poor, sandstone derived, acid soils on in the area between Melkbos and Cape Point, and the vegetation type needs fire for optimal ecological functioning (Helme *et al* 2016).

The vegetation on the three alternative sites does not appear to have been burnt for at least twenty years. This means that the vegetation on site is now senescent (some species dying of old age; diversity dropping), as this type of Fynbos should burn once every 10-14 years for optimal ecological functioning (Helme *et al* 2016).



**Plate 1:** View of Medium sensitivity vegetation in the southern part of the study area 1, west of the N7, with pypgras (*Ehrharta villosa*) dominant, and scattered indigenous shrubs. The large shrubs are invasive alien Port Jackson (*Acacia saligna*).



**Plate 2:** View of the main High sensitivity patch of vegetation in study area 1, as mapped in Figure 4. The dominant plant is *Phyllica cephalantha*, with *Thamnochortus punctatus* in the foreground. Indigenous shrubs cover about 80% of this area.



**Plate 3:** *Restio impolitus* is Redlisted as Vulnerable, and a single plant was found just west of the southern part of the study area.

### Alternative 1

Most of this study area has been relatively heavily disturbed in the past, most recently by dense stands of alien invasive trees, such as *Leptospermum laevigatum* (Australian myrtle), *Acacia saligna* (Port Jackson) and *Acacia cyclops* (rooikrans). Most of this alien vegetation was cleared and chipped about ten years ago, but has returned at a lower density since then, and now covers about 10-20% of the study area, and would be easy to eradicate. Rehabilitation potential

is however only moderate in many areas, as the soil chemistry has been altered by the long period of alien plant invasion (changed soil from acid to neutral pH).



**Plate 4:** View of the road reserve, fence, and adjacent section east of the N7, looking south. A proposed additional inbound lane is planned for this area, extending about 12m from the current hard verge, and will impact on the formally Protected Area to the left (east) of the road reserve fence.

The long-term absence of fire has also meant that the indigenous seedbank has not had optimal conditions to germinate for a long time (>20yrs).

The more disturbed and lower diversity areas are deemed to be of **Medium botanical sensitivity** at a regional scale (see Figure 4). Indigenous plant cover here is about 50%, with about 30-40% being open space. Indigenous plant species recorded in these areas include *Aspalathus ternata*, *A. hispida*, *Putterlickia pyracantha*, *Thamnochortus punctatus*, *T. obtusus*, *Dimorphotheca pluvialis*, *Athanasia trifurcata*, *Searsia laevigata*, *S. lucida*, *Seriphium plumosum*, *Phylica cephalantha*, *Metalasia densa*, *Asparagus capensis*, *Erica mammosa*, *Aristida diffusa*, *Dicerotheramnus rhinocerotis*, *Staberoha cernua*, *Phylica stipularis*, *Ehrharta villosa*, *Restio sieberi*, *Ficinia secunda*, *F. indica*, *Ursinia anthemoides*, *Chrysocoma ciliata*, *Agathosma imbricata*, *Senecio pterophorus*, *Helichrysum cymosum*, *Tetragonia fruticosa*, *Willdenowia incurvata*, *Anthospermum spathulatum*, *Eriocephalus racemosus* and *Passerina corymbosa*. No succulents or bulbs were observed, which is probably largely an indication of the previously disturbed nature of the site.

The **High sensitivity** area (see Plate 2; also included in Figures 2 & 4) includes all or most of the above species, plus *Senecio erosus*, *Diosma oppositifolia* and *Willdenowia teres*. The key distinguishing feature here is the much higher indigenous plant cover (about 80% versus about 15%), and the consequently much higher rehabilitation potential.

The road reserve east of the N7 is of Low sensitivity, as it is degraded, regularly mown and of low diversity, being dominated by *Ehrharta villosa*, *Cynodon dactylon*, *Tetragonia fruticosa* and assorted weedy annuals. East of the road reserve fence it becomes slightly more diverse and consequently of higher sensitivity, as it has not been regularly mown, although it was until recently very densely invaded by alien invasive Port Jackson (now felled). Additional indigenous species still present in this area include *Aspalathus hispida*, *Thamnochortus punctatus*, *Dimorphotheca pluvialis*, *Searsia laevigata*, *Metalasia densa*, *Asparagus capensis*, *Aristida diffusa*, *Dicerotheramnus rhinocerotis*, *Ficinia indica*, *Ursinia anthemoides*, *Chrysocoma ciliata*, *Willdenowia incurvata*, *Senecio pterophorus* and *Passerina corymbosa*.

### Alternative 2

The entire study area has been previously disturbed. The access for this alternative would have to traverse a major Eskom servitude, and the actual facility would be located west of the servitude, in an area of deep sands. The servitude is brushcut regularly, and woody alien invasives (mainly Port Jackson) are removed annually (see Plate 5).



**Plate 5:** View of the Eskom servitude through which the Alternative 2 site would have to be accessed. This area is of Low botanical sensitivity.



**Plate 6:** View of the Alternative 2 target area. The only indigenous perennials in the photo are the mats of suurvy (*Carpobrotus edulis*). This area is of Low botanical sensitivity.

Indigenous plant diversity in the proposed facility area is low, and makes up less than 20% of the total cover. Indigenous species include *Wahlenbergia andorsacea*, *Carpobrotus edulis*, *Cynodon dactylon*, *Ursinia anthemoides*, *Ehrharta villosa*, *Helichrysum moeserianum*, *H. indicum*, *Senecio arenarius*, *Senecio burchelli*, *Albuca cooperi*, *Phyllopodium cephalophorum*, *Conicosia pugioniformis*, *Pelargonium capitatum*, *P. senecioides*, *Searsia angustifolia*, *S. glauca*, *Gymnosporia buxifolia*, *Putterlickia pyracantha* and *Lycium ferocissimum*. The alien invasive flora includes many species of annual grasses (*Briza*, *Lolium*, *Avena*, *Bromus*), *Acacia saligna*, *Oenothera* sp., *Echium plantagineum*, *Raphanus rapistrum*, *Nicotiana glauca* and *Rumex acetosella*.

No plant Species of Conservation Concern (SoCC) are present or likely. The entire study area is of Low botanical sensitivity (no map provided).

### **Alternative 3**

The entire study area has been previously disturbed, is not regularly brushcut, and is used for cattle grazing. Alien invasive vegetation is heavily dominant, with indigenous species making up less than 10% of the cover. Indigenous species include *Carpobrotus edulis*, *Ursinia anthemoides*, *Ehrharta villosa*, *Helichrysum moeserianum*, *H. indicum*, *Senecio arenarius*, *Senecio burchelli*, *Albuca cooperi*, *Conicosia pugioniformis*, *Lobelia erinus*, *Pelargonium capitatum*, *P. senecioides*

and *Cynodon dactylon*. The alien invasive flora includes many species of annual grasses (*Briza*, *Lolium*, *Avena*, *Bromus*), *Oenothera* sp., *Torilis arvensis*, *Acacia saligna*, *Echium plantagineum*, *Raphanus rapistrum*, *Nicotiana glauca* and *Rumex acetosella*.

In the northern part of the onramp area is a patch of bulrushes (*Typha capensis*; see Plate 8; about 40m by 15m in extent) that occupies an artificial depression, with a berm to the south.

No plant Species of Conservation Concern (SoCC) are present or likely. The entire study area is of Low botanical sensitivity.



**Plate 7:** Alternative 3 target area, with virtually no indigenous vegetation remaining. This area is of Low botanical sensitivity.



**Plate 8:** Bulrushes (*Typha capensis*) in an artificial depression just east of the N7, and within the onramp for Alternative 3. Looking north. This area is of Low botanical sensitivity.

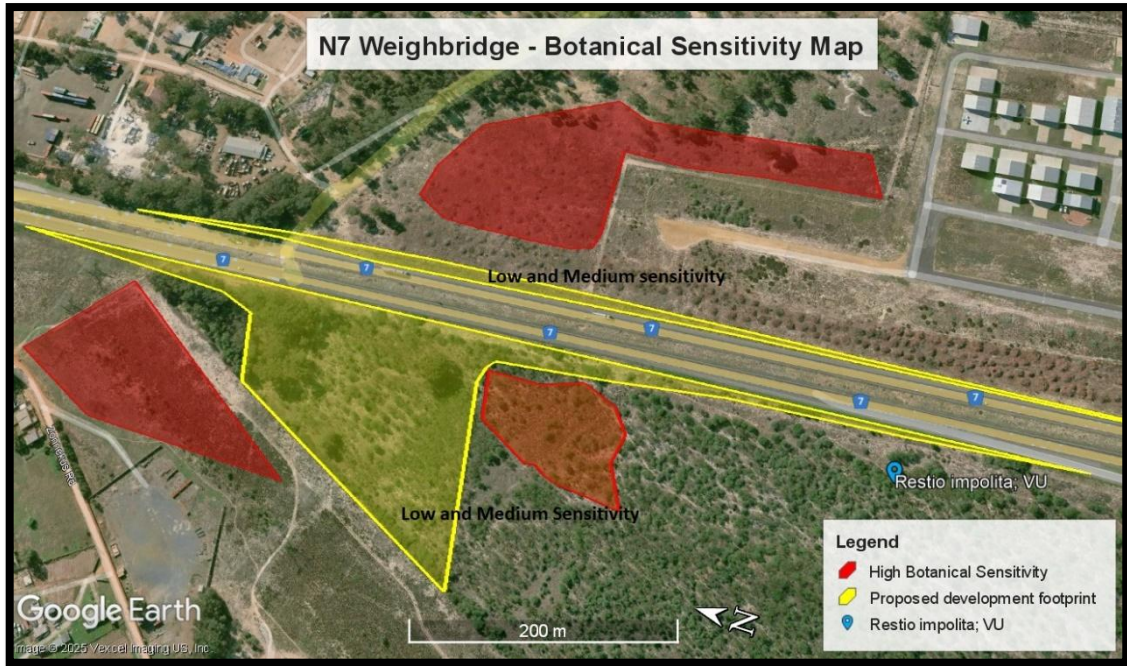
### 5.1 Plant Species of Conservation Concern (SoCC)

Two plant Species of Conservation Concern (SoCC) were recorded during the survey, only in the Alternative 1 study area, and a few others may occur in these relatively degraded and senescent areas. None of them were actually recorded within the proposed footprint area.

A couple of very old (senescent) plants of *Aspalathus ternata* (Near Threatened) were found adjacent to and just north of the existing weighbridge, but their presence here is of low regional significance, as the population is very small, and this species is widespread and still relatively common (Vredendal to Cape Town).

*Restio impolitus* (Plate 3) is a rare and severely threatened graminoid found on the coastal sand plain, from Redelinghuys to Cape Town, and is Redlisted as Vulnerable. A single plant was found, just outside the footprint in the southern part of the study area (see Figure 4), but I have also observed it about 700m to the northwest, so there seems to be a small local subpopulation here.

A single plant of *Otholobium uncinatum* (Near Threatened) has been recorded very close to the *Restio impolitus* (see inaturalist.org), but was not seen during the current site survey. The plotted location of the plant on iNaturalist can thus not be verified, but it is clearly more common east of the N7, just north of the Morningstar airfield property (in the formally Protected Area as per Figure 3), where there are loamy soils, typically more to its liking, and I thus believe that the locality here may be an error. *Heterorachis aculeata* (Vulnerable) also occurs just north and east of the airfield, but is not present in the study area.



**Figure 4:** Botanical sensitivity map in the vicinity of the proposed development area (Alternative 1). All areas within the Layout 1 study area (including the yellow shaded areas) that are not shaded red are of Low or Medium sensitivity. The additional High sensitivity areas outside the actual study area have been included for context.

## 6. IMPACT ASSESSMENT

### 6.1 Construction Phase (Direct) Botanical Impacts

It can safely be assumed that the primary construction phase botanical impact of the new weighbridge and associated roads would be permanent loss of all of the existing natural and partly natural vegetation in the development footprints (gazetted as a Critically Endangered vegetation type). No plant Species of Conservation Concern were recorded within the actual proposed footprints, although two were found in close proximity to the Alt 1 footprint.

Vegetation that will be lost in Layout 1 is all Low and Medium Sensitivity. No High sensitivity vegetation should be lost in the proposed footprint. However, it should be noted that in the section east of the N7 the new layout will intrude about 10m into a declared Protected Area, which is currently managed for conservation. This area is degraded by a long history of alien plant invasion (now cleared), and is of low diversity, but is slowly rehabilitating.

Botanical significance of this vegetation loss (about 3.3ha) for Layout 1 is Low to Medium negative before and after mitigation.

For Alternatives 2 and 3 the botanical significance of the footprint vegetation loss is Low negative before and after mitigation.

The No Go alternative would clearly have a lower direct (construction phase) botanical impact than the proposed development - presumably best rated as Neutral.

The extent of the impacts are deemed to be local and regional, but also national, in that the vegetation types and threatened species are also assessed at a national level.

<u>Development Alternative</u>	<u>Extent of impact</u>	<u>Duration of impact</u>	<u>Intensity</u>	<u>Probability of impact</u>	<u>Irreplaceable loss of biodiversity</u>	<u>Significance before mitigation</u>	<u>Significance after mitigation</u>
Alternative 1	Mainly local	Permanent	Medium	Definite	Low	Low to Medium -ve	Low to Medium -ve
Alternative 2	Local	Permanent	Medium	Definite	Very Low	Low -ve	Low -ve
Alternative 3	Local	Permanent	Medium	Definite	Very Low	Low -ve	Low -ve
No Go	Local	Unknown and variable	Neutral to low negative	Not likely	Low	Neutral	Neutral

**Table A:** Summary table for construction phase botanical impacts associated with the proposed alternatives. The primary construction phase impacts would be permanent loss of natural and partly natural vegetation (gazetted as a Critically Endangered vegetation type, of Low and Medium sensitivity), in the development footprints (about 3.3ha for Alt 1)

## 6.2 Operational Phase Botanical Impacts

Operational phase impacts will take effect as soon as the natural vegetation on the site is lost or disturbed, and will persist in perpetuity, or as long as the area is not rehabilitated. Operational phase impacts include loss of current levels ecological connectivity across the site (essentially only N-S connectivity), and associated habitat fragmentation. The new development is likely to result in further fire suppression of the adjacent natural areas, with associated negative

ecological impacts, and may result in (further?) alien Argentine ant introduction, with associated negative ecological impacts on seed dispersal.

Overall the operational phase botanical impacts of development of all three site alternatives are likely to be **Low negative** at a local scale, before mitigation. The low significance rating is mainly because the development is adjacent to an existing busy highway and does not intrude significantly into the larger patches of vegetation to the west (Alt 1), and the vegetation is already significantly degraded in many parts.

The No Go alternative would clearly have a slightly lower indirect (operational phase) botanical impact than the proposed development, although would not be without impact, due to ongoing alien invasive vegetation growth.

Positive ecological impacts could be realised at this stage if the applicant undertakes ongoing invasive alien vegetation management in the remaining areas of natural and partly natural vegetation (i.e. undertakes required mitigation).

<u>Development Alternative</u>	<u>Extent of impact</u>	<u>Duration of impact</u>	<u>Intensity</u>	<u>Probability of impact</u>	<u>Irreplaceable loss of biodiversity</u>	<u>Significance before mitigation</u>	<u>Significance after mitigation</u>
Layout 1	Mainly local	Permanent	Low	Definite	Low	Low -ve	Neutral
Alternative 2	Local	Permanent	Medium	Definite	Very Low	Low -ve	Neutral
Alternative 3	Local	Permanent	Medium	Definite	Very Low	Low -ve	Neutral
No Go	Local	Unknown and variable	Neutral to low negative	Likely	Low	Neutral to Low negative	Neutral to Low negative

**Table B:** Summary table for operational phase botanical impacts associated with the 3 alternatives. The operational phase impacts would be loss of current ecological connectivity across the sites, and associated habitat fragmentation, as well as likely disruption of optimal fire regimes and of ant-based seed dispersal in the surrounding natural areas.

### **6.3 The No Go Alternative**

The No Go alternative (continuation of the *status quo*) on this site would have clearly lower construction and operational phase botanical impacts (Neutral to Low negative) than the possible development, and would thus technically probably be the preferred alternative from a botanical perspective.

### **6.4 Cumulative Impacts**

The cumulative ecological impacts are in many ways equivalent to the regional ecological impacts, in that the vegetation type/s likely to be impacted by the proposed development have been, and will continue to be, impacted by numerous developments and other factors (the cumulative impacts) within the region. The primary cumulative impacts in the region are loss of natural vegetation and threatened plant species to ongoing agriculture, urban development and alien plant invasion (Mucina & Rutherford 2012; Helme *et al* 2016).

The overall cumulative ecological impact of development of either of these three site alternatives at the regional scale is likely to be Very Low negative.

### **6.5 Positive Impacts**

No significant positive ecological impacts of the proposed development are likely during either the construction or the operational phase, although if the applicant does undertake ongoing invasive alien plant removal on the land they manage this will have a small positive ecological impact. However, it would appear that relatively little natural vegetation will be included within the proposed fencing, so the impact may be limited.

## **7. REQUIRED MITIGATION**

No specific mitigation is required for Alternatives 2 and 3, and the following mitigation for Alternative 1 is deemed feasible, reasonable and mandatory:

- The authorised hard surface footprints should be surveyed and pegged out on site prior to any site development, and the outer fenceline of the new development (both east and west of the N7) should also be erected prior to any site development.
- No areas of natural or partly natural vegetation should be disturbed outside the pegged out and authorised development footprints. No vehicular activity or dumping of material may take place outside the authorised development footprints.

- Formal conservation of the identified High sensitivity areas adjacent to the proposed development Alternative 1 (west of the N7, as per Figure 4) is recommended, and should be investigated. These areas should ideally be declared Protected Areas within one year of any authorisation of the current project, and could potentially be managed by the City of Cape Town Biodiversity Management Branch, with ongoing management funding to be provided by the applicant. A key issue in this regard would be ownership, as it is unclear to me whether the applicant has any current responsibility or ownership in this regard.

The following mitigation applies to all three alternatives:

- All woody alien invasive vegetation should be removed from within the fenced off project area, prior to the development of any authorised development footprints. This material should be removed from site and taken to an approved organic dump. Removal of the alien vegetation must be undertaken by a trained and licensed alien vegetation removal team, and must be undertaken using methodology outlined in the Best Practise Guidelines (see Martens *et al* 2021).

## **8. CONCLUSIONS AND RECOMMENDATIONS**

- The study areas support fairly to very heavily degraded areas of Cape Flats Sand Fynbos, which is technically gazetted as a Critically Endangered vegetation type.
- At least two plant Species of Conservation Concern (SoCC) were recorded in the near vicinity of Alternative 1, but none actually in the proposed footprint or study area. No SoCC were recorded within the Alternative 2 and 3 study areas.
- An area of High botanical sensitivity was found within the originally proposed development footprint for Alternative 1, and subsequently alternative layouts were generated for assessment, including the one currently assessed.
- The current Alternative 1 layout is likely to have a Low to Medium negative botanical impact overall, before and after mitigation.

- The proposed Alternative 2 and 3 layouts would have Low negative botanical impacts overall, before and after mitigation, and are thus the slightly preferred development alternatives.
- No special botanical mitigation would be necessary for the development of any of the alternatives, other than that outlined in Section 7.
- Rehabilitation of the current weighbridge area was mentioned, but I don't believe that it will add any ecological value, and the significant amount of money it would require should rather be spent on rehabilitation of other nearby areas that are not as heavily degraded and have a realistic chance of rehabilitation success (such as around the Morningstar airfield (currently a formally Protected Area), or west of the current study area). The heavily degraded nature of the current weighbridge site means that rehabilitation will be expensive, difficult and time consuming, as Sand Fynbos is not easy to rehabilitate once the soil structure and chemistry has been altered. I would rather advocate that the rehabilitation budget be spent on ongoing removal of all woody alien invasive vegetation (using methodology as outlined in Martens *et al* 2021) in the adjacent High sensitivity areas (as per Figure 4), and in the area between the N7 and the Eskom servitude (some 300m west of the N7), which has a much higher chance of rehabilitation success, and is not as heavily degraded.

## 9. REFERENCES

CapeNature. 2023. Western Cape Biodiversity Spatial Plan. CapeNature, Cape Town, South Africa.

DEA. 2011. Threatened Terrestrial Ecosystems in South Africa. *Government Gazette* Vol. 1002: No. 34809. National Printer, Pretoria.

Government of South Africa. 2022. South African Red List of Terrestrial Ecosystems: assessment details and ecosystem descriptions. Government Notice 2747, Gazette 4526. Technical Report #7664, SANBI Pretoria, South Africa.

Helme, N., P. Holmes & A. Rebelo. 2016. Lowland Fynbos Ecosystems. In: Cadman, A (ed.). *Ecosystem Guidelines for Environmental Assessment in the Western Cape, Ed.2*. Fynbos Forum, Fish Hoek, South Africa.

Holmes, P., J. Wood and C. Dorse. 2018. Updated (Dec 2024) and groundtruthed CoCT Biodiversity Network, together with City of Cape Town – Biodiversity Report. Environmental Management Branch, City of Cape Town. Available from: [www.bgis.sanbi.org](http://www.bgis.sanbi.org)

Manning, J. and P. Goldblatt. 2012. Plants of the Greater Cape Floristic Region 1: The Core Cape flora. *Strelitzia* 29. South African National Biodiversity Institute, Pretoria.

Martens, C., Deacon, G., Ferreira, D., Auret, W., Dorse, C., Stuart, H., Impson, F., Barnes, G. and C. Molteno. 2021. *A practical guide to managing invasive alien plants: A concise handbook for land users in the Cape Floral Region*. WWF South Africa, Cape Town, South Africa.

Mucina, L. and M. Rutherford. *Eds.* 2024 online update, on [bgis.sanbi.org](http://bgis.sanbi.org). Vegetation map of South Africa, Lesotho, and Swaziland. *Strelitzia* 19. South African National Biodiversity Institute, Pretoria.

Raimondo, D., Von Staden, L., Foden, W., Victor, J.E., Helme, N.A., Turner, R.C., Kamundi, D.A., and Manyama, P.A. (eds.) 2009 and online updates at [redlist.sanbi.org](http://redlist.sanbi.org). Red List of South African Plants 2009. *Strelitzia* 25. South African National Biodiversity Institute, Pretoria.

Rouget, M., Reyers, B., Jonas, Z., Desmet, P., Driver, A., Maze, K., Egoh, B. & Cowling, R.M. 2004. *South African National Spatial Biodiversity Assessment 2004: Technical Report. Volume 1: Terrestrial Component*. Pretoria: South African National Biodiversity Institute.



- Co-author of Red List of SA Plants (Raimondo et al 2009), Fynbos Forum Ecosystem Guidelines (de Villiers et al 2005) and Fynbos chapter of SA Vegetation Map (Mucina & Rutherford 2006). Top global plant observer on iNaturalist.org.

### **SOME RELEVANT CITY OF TOWN EXPERIENCE**

A selection of previous botanical work in the greater City of Cape Town region is as follows:

- Scoping and Constraints studies for CWA airport (PHS Consulting 2022-2024)
- Macassar WWTW IA (Zutari 2023)
- Strandfontein Coastal Node IA (Infinity Environmental 2024)
- Hazendal Ptns 31& 33 (Monique Sham 2024)
- N7 weighbridge IA (SES 2023) Suikerbekkie PV project, Joostenberg (CoCT 2022)
- Erf 254 Atlantis (The Environmental Practice 2021)
- Erf 255 Atlantis (The Environmental Practice 2021)
- Portion 17 of Farm 724 Joostenberg Vlakke (County Fair & Enviro-EAP 2021)
- CoCT Desalination Project for Witzands and Paarden Eiland (CSIR 2020);
- CoCT Desalination project screening study (CSIR; 2014)
- Eskom Platteklouf – Muldersvlei powerline upgrade (Landscape Dynamics; 2014)
- De Grendel assessment, Tygerberg (De Grendel estate; 2013)
- Penhill farm baseline (EnviroPart; 2013)
- Capri Erf 953 IA (Khula Environmental; 2013)
- CoCT BioSolids IA (RMS; 2013)
- Athlone powerline (SEC; 2013)
- Scarborough Erf 766 IA (Terramanzi; 2012)
- Review of proposed ACSA Phase 3 development (ACSA; 2011)
- Ocean View infill housing Scoping and Impact Assessment (IW Terblanche & Associates; COCT; 2010)
- Baseline study and Impact Assessment of proposed human settlement project, Driftsands NR (CCA; 2010)
- Scoping and Impact Assessment of proposed R300 Cape Flats Freeway (Chand/ EcoSense jr; 2004 – 2009)
- Baseline assessment of Faure SAPS site (H vd Hoven Consultants; 2009)
- Scoping and Impact Assessment for Eskom transmission line Ankerlig – Omega (Savannah Environmental 2007, 2008)
- Scoping and Impact Assessment for new Mitchell's Plain hospital site (Doug Jeffery Env. Consultants; 2006, 2008)
- Basic Assessment of proposed Strandfontein Road widening (SEF, CoCT 2008)