

**Heritage Findings for Alternative 6 and**  
**Alternative 7:**

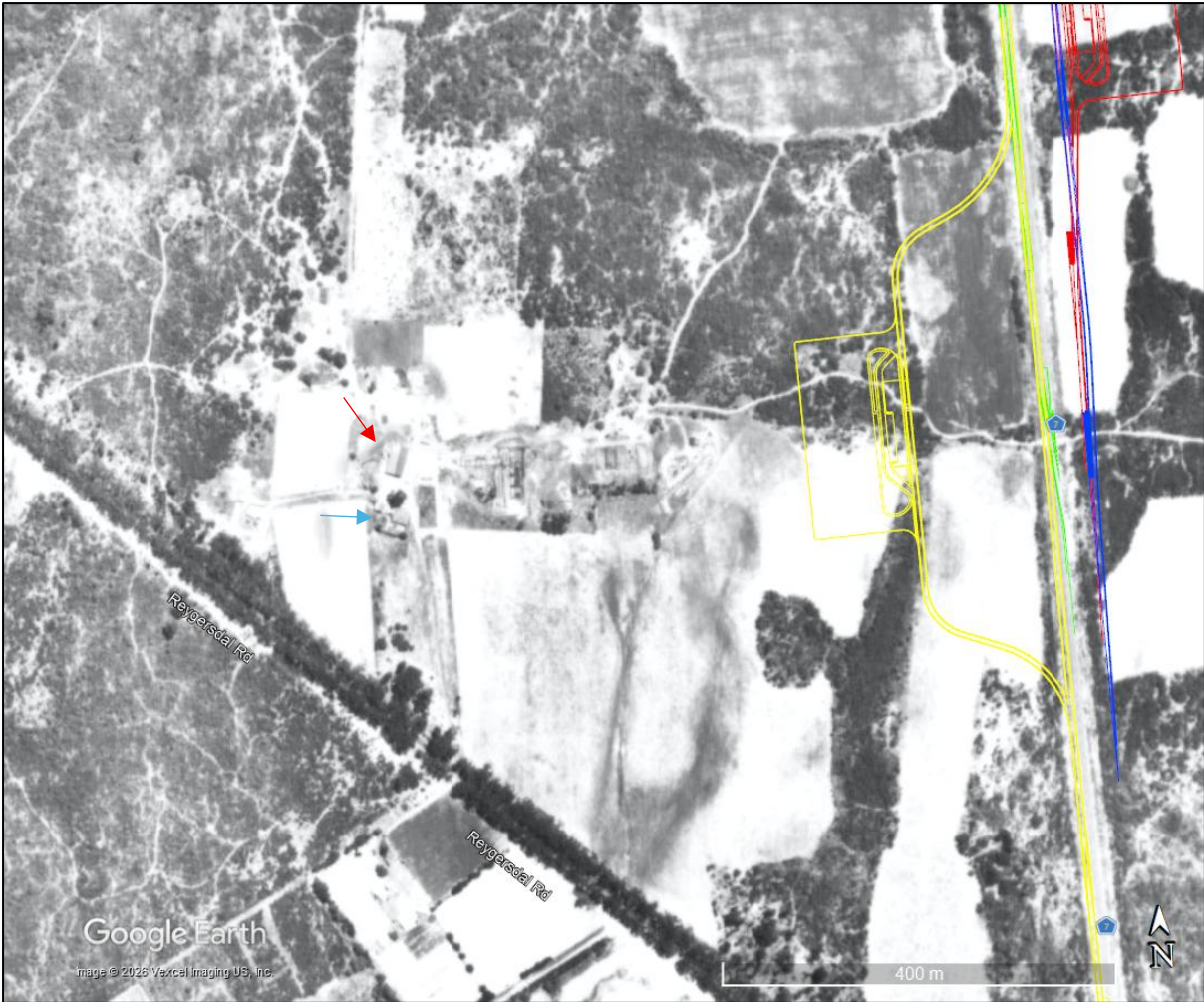
**By Heritage Specialist: Jayson Orton of ASHA**  
**Consulting**



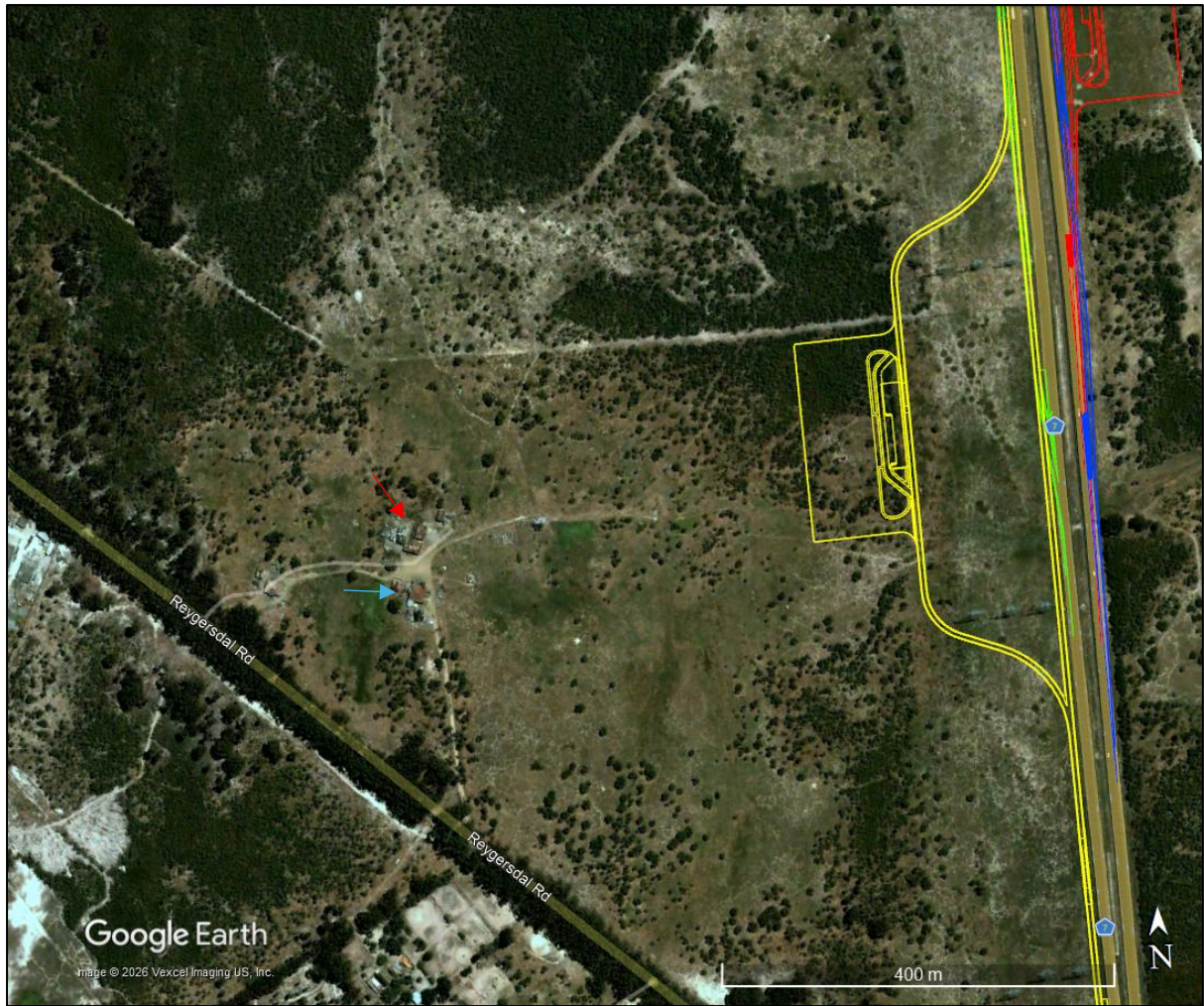
1938 aerial image showing a small farmstead just west of the proposed weighbridge Alternative 6. The red arrowed structure still survives. The blue arrowed structure was removed between 2004 and 2009.



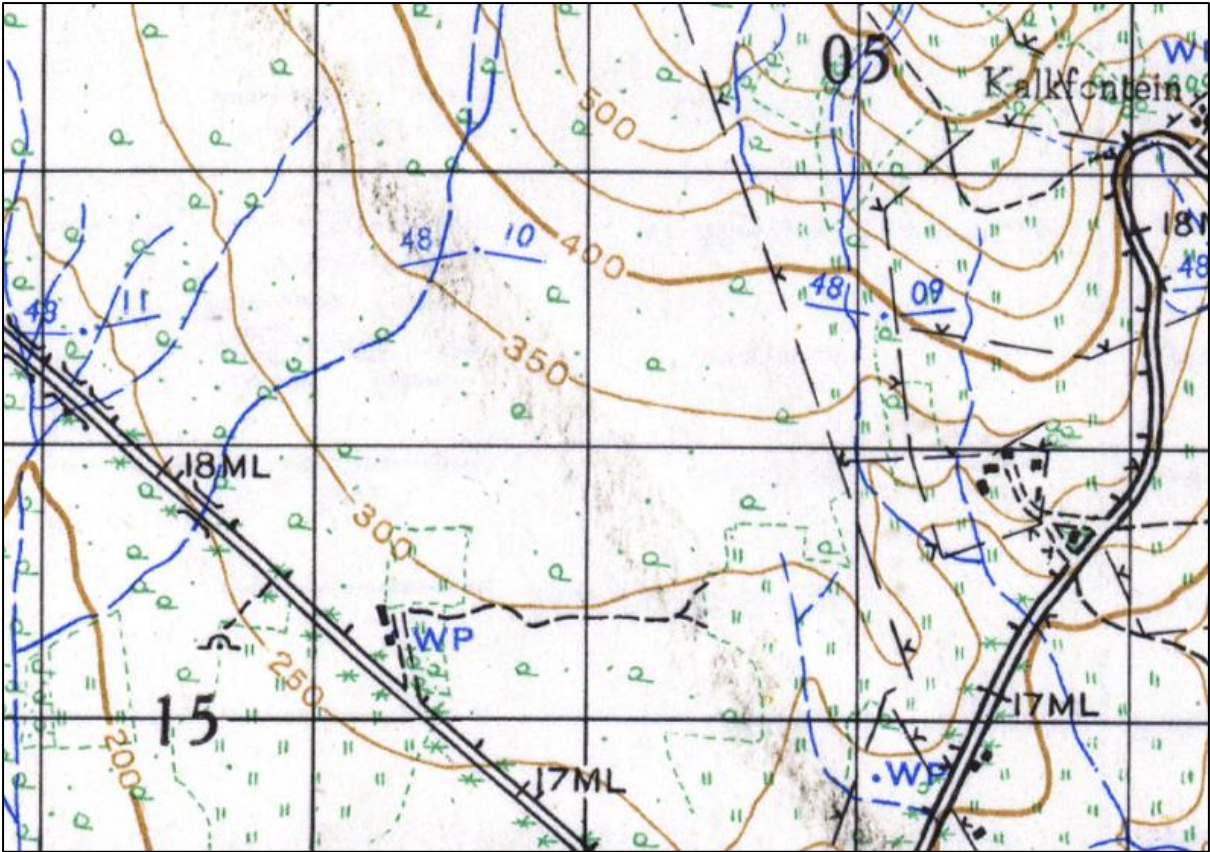
1953 aerial image showing a farmstead just west of the proposed weighbridge Alternative 6. The red arrowed structure still survives. The blue arrowed structure was removed between 2004 and 2009.



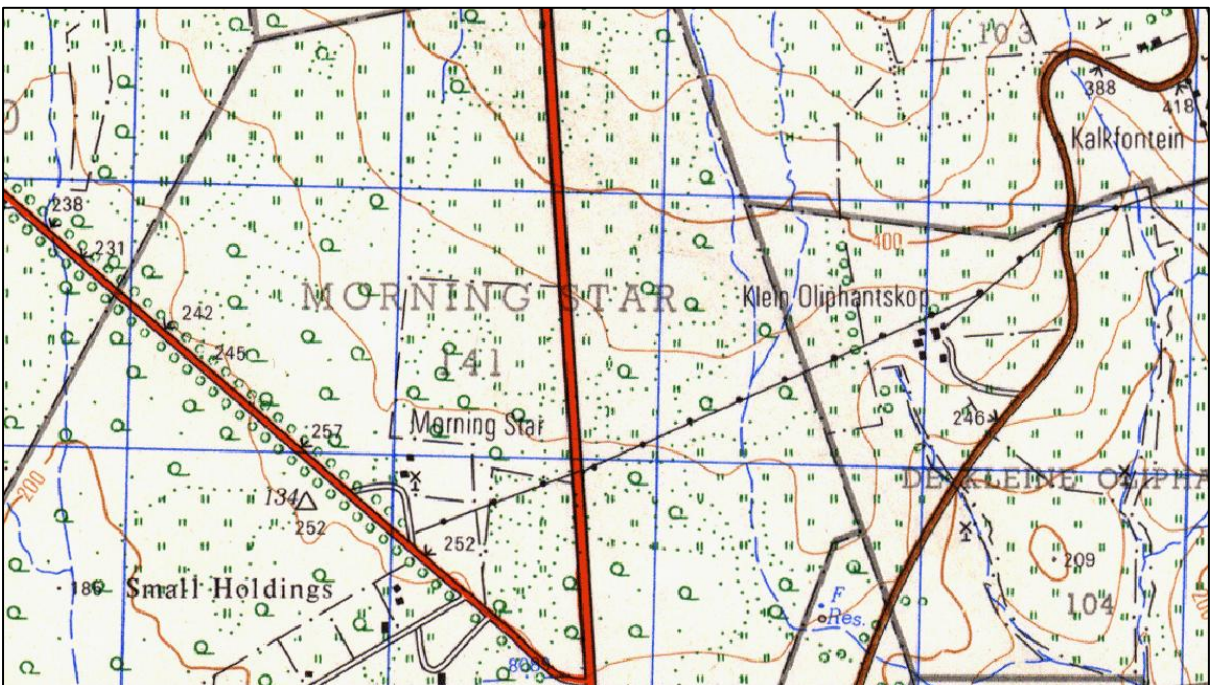
1968 aerial image showing a fairly well-developed farmstead just west of the proposed weighbridge Alternative 6. The red arrowed structure still survives. The blue arrowed structure was removed between 2004 and 2009.



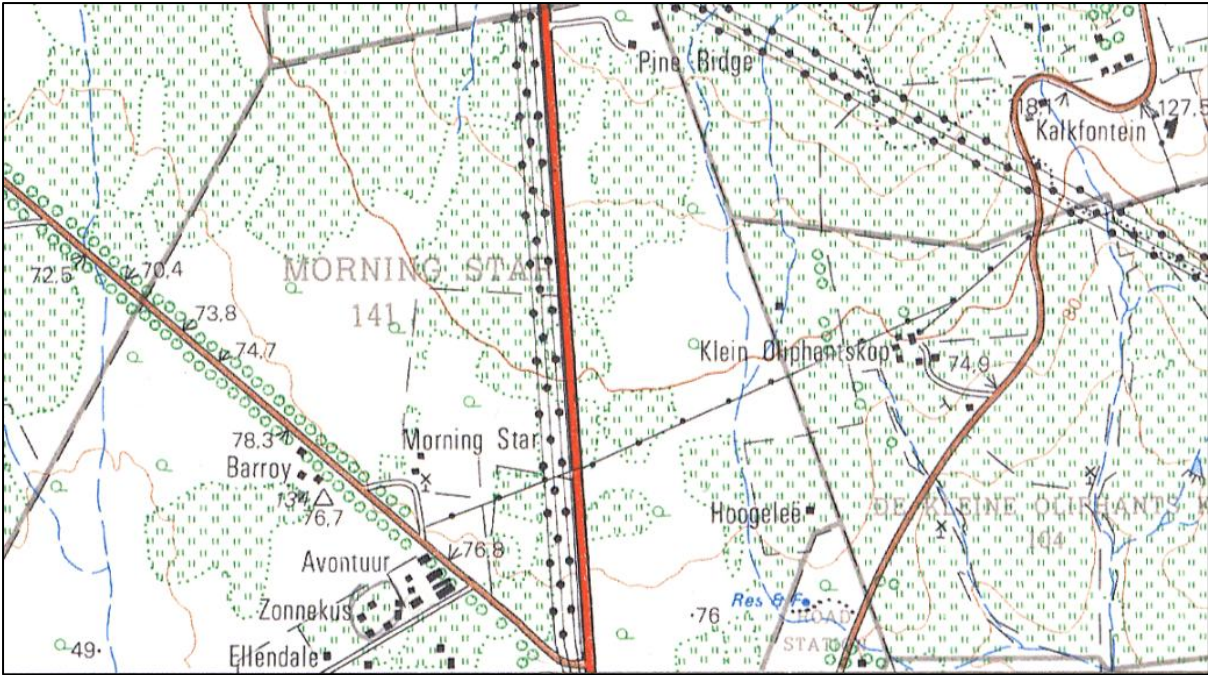
2002 aerial image showing no farmstead present, but a small settlement has developed a little further to the west. The red arrowed structure still survives. The blue arrowed structure was removed between 2004 and 2009.



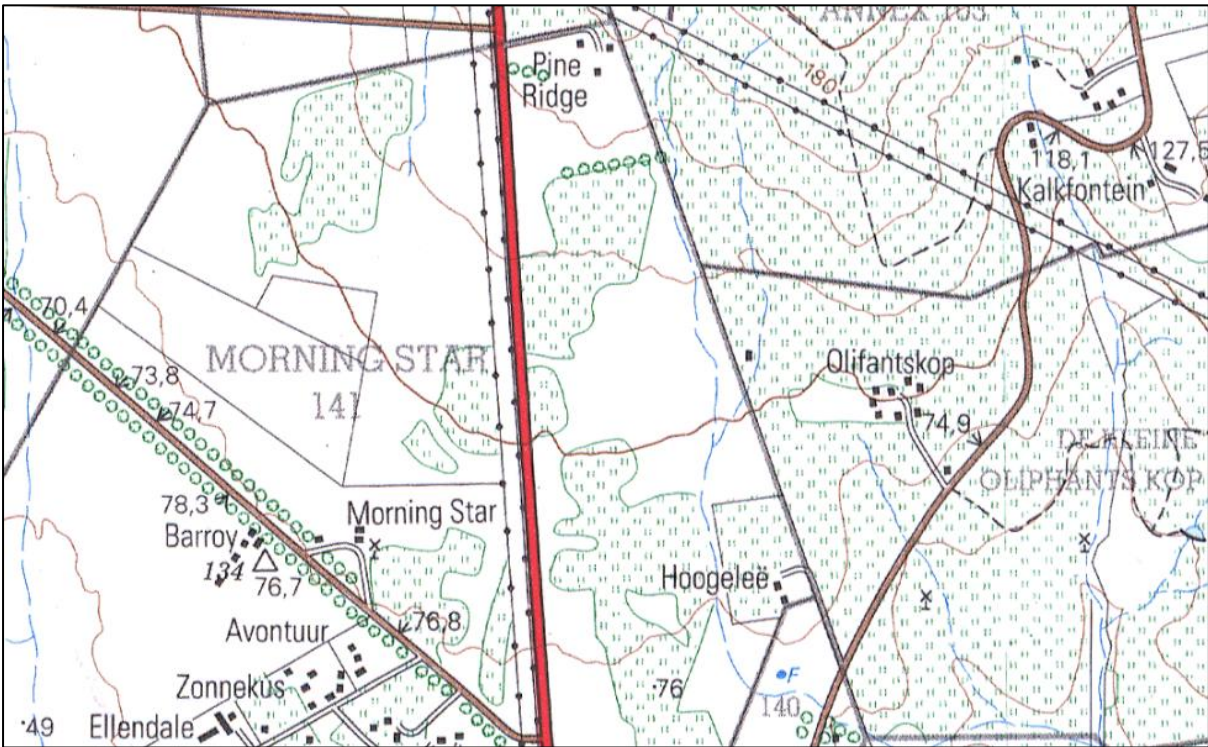
1942 1:50 000 topographic map showing a small farmstead but it is not named. A track leads eastwards towards where the glass and ceramics were found.



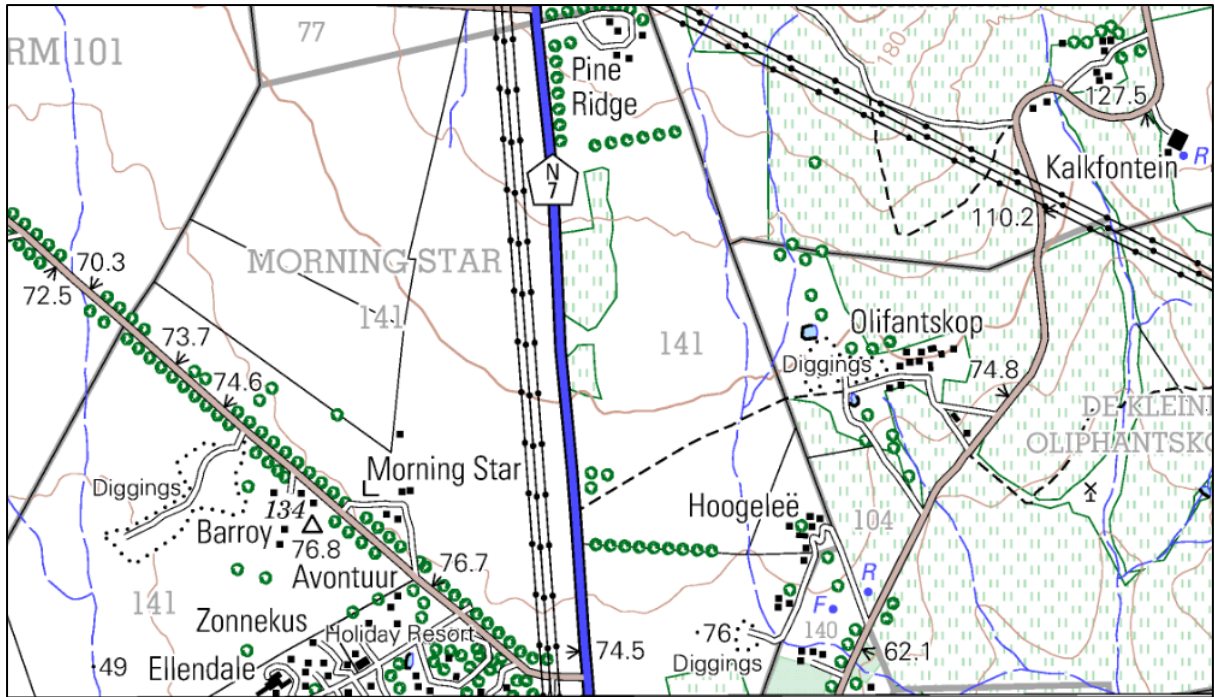
1966 1:50 000 topographic map naming the farmstead "Morning Star" and also showing the beginning of small holding development to the south. The N7 was already built, but aerial photography shows that it was only what is now the northbound carriageway.



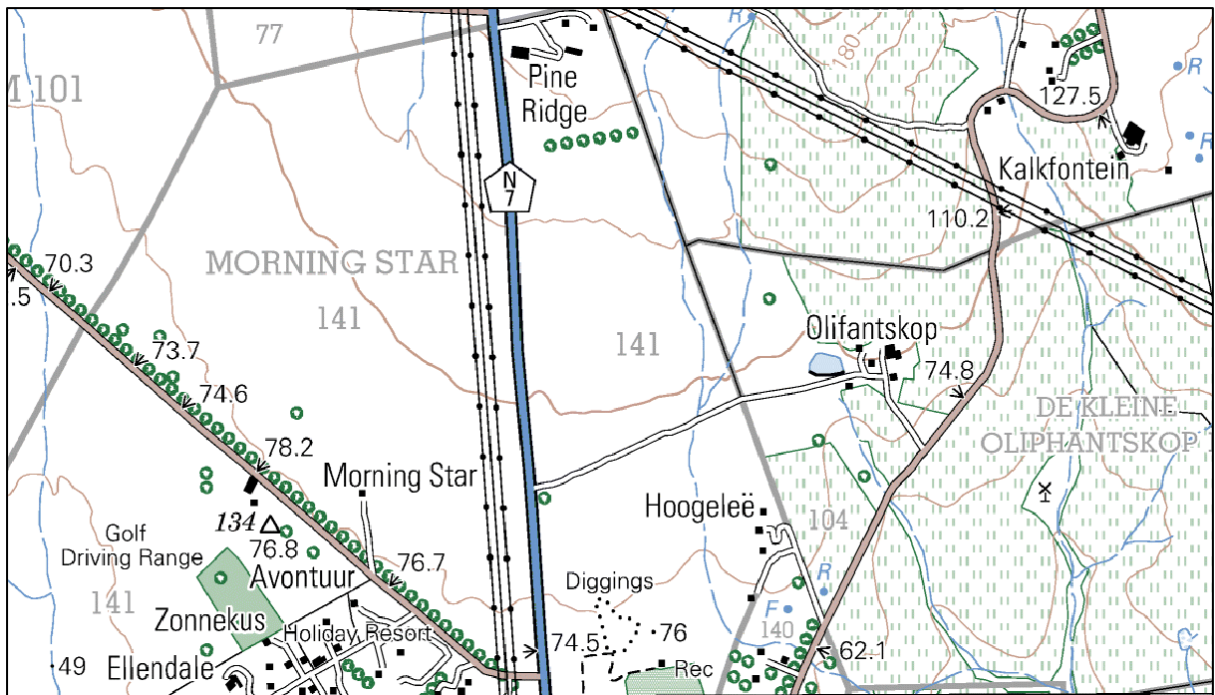
1980 1:50 000 topographic map showing the “Morning Star farmstead as well as the small holdings and large Eskom powerlines.



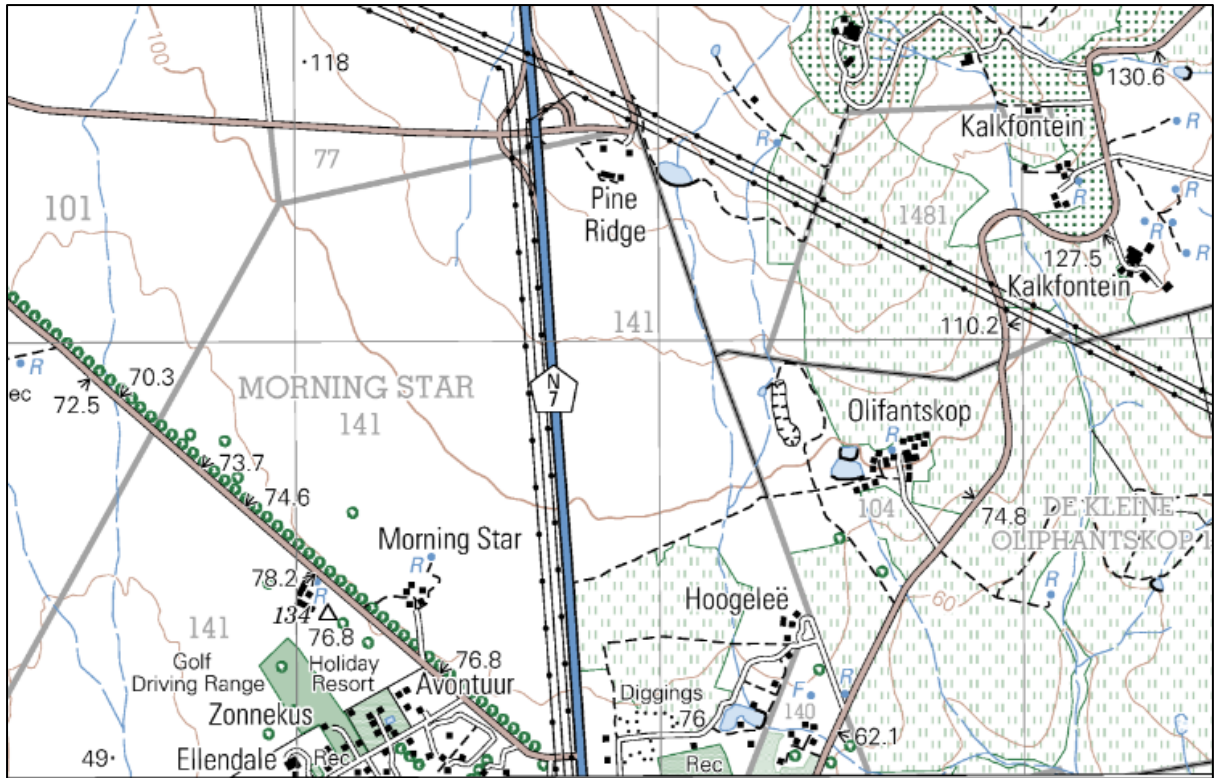
1992 1:50 000 topographic map showing the same as the 1980 map.



2000 1:50 000 topographic map showing no agricultural lands at Morning star.

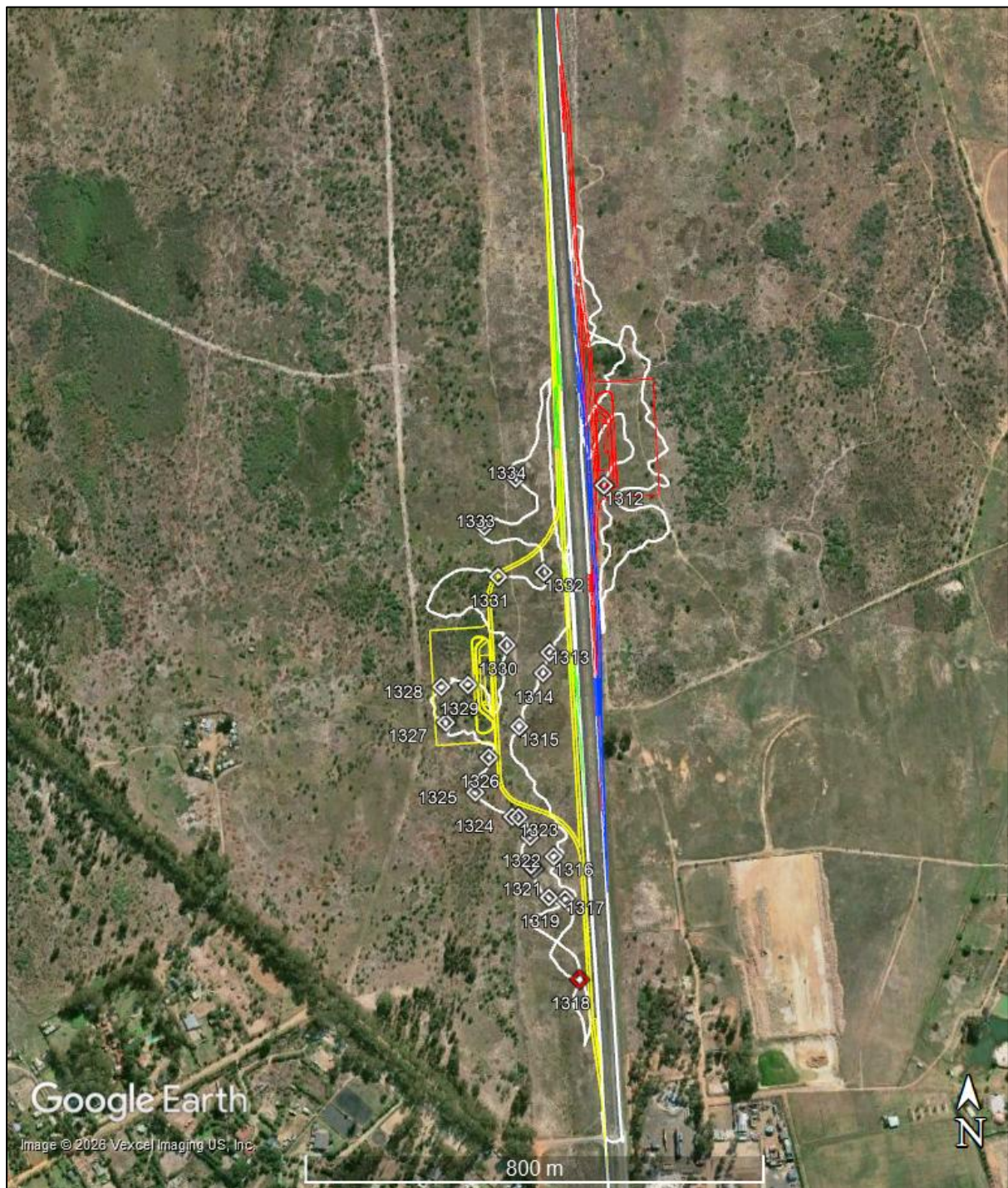


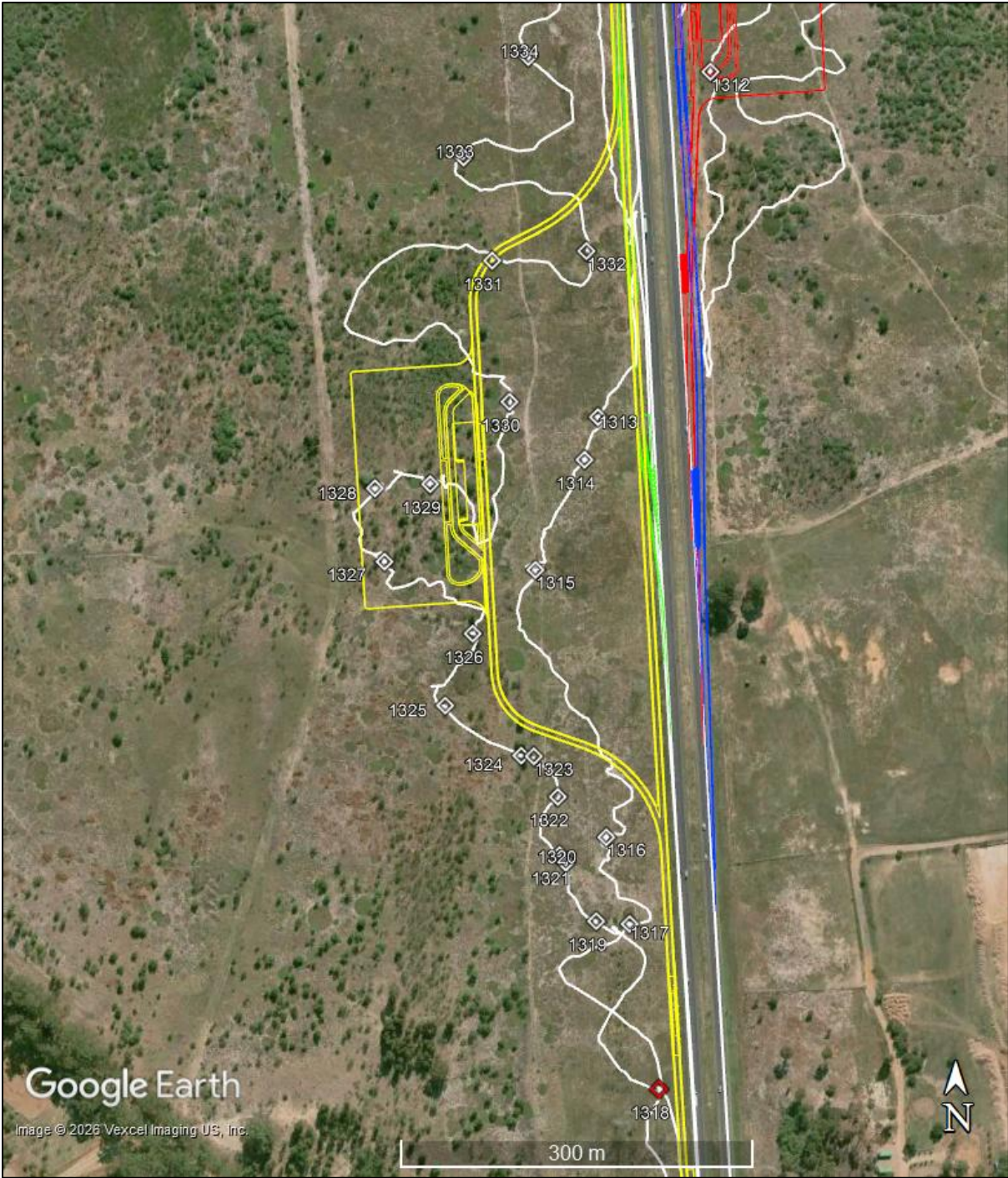
2000 1:50 000 topographic map showing just one structure at Morning Star.



2022 1:50 000 topographic map the small cluster of buildings that currently exists at the location of the Morning Star farmstead.



Mapping of survey tracks (white lines) and finds (numbered diamond symbols). Alternative 6 is shown in yellow and blue, Alternative 7 in red and green.












Finds. Scale in cm.

Way-point	Location	Description and photographs
1312	S33 44 20.7 E18 32 45.8	<p data-bbox="469 297 1348 360">Two ceramic fragments a few meters apart. The smaller fragment has printing: 'North' on it.</p> 
1313	S33 44 30.0 E18 32 42.3	<p data-bbox="469 1178 1401 1240">Ceramic fragments, all white except the bottom left fragment which has a thin stripe printed.</p> 

Way-point	Location	Description and photographs
1314	S33 44 31.1 E18 32 41.8	<p data-bbox="467 230 1430 297">Ceramic fragments and one milk glass fragment. One ceramic fragment has printing: 'HMN'.</p> 
1315	S33 44 34.1 E18 32 40.3	<p data-bbox="467 819 1430 1061">Ceramics fragments: white, lined, sponged, gilded and transfer printed. One fragment has lettering with a lion emblem that could be 'HM' and another fragment has '... Bennet's Paten... _ppable surface __rslm...'. This could be Dunn Bennet &amp; Co, Burslem from 1886 who made unchippable surface stoneware for use in hotels and on board ships from 1914 (<a href="https://www.thepotteries.org/allpotters/363.htm">https://www.thepotteries.org/allpotters/363.htm</a>). There is also one piece of clear glass fragment.</p> 

Way-point	Location	Description and photographs
		
1316	S33 44 41.4 E18 32 42.7	<p>Ceramics of mostly white with one lined and four fragments with lettering printed on; and an oyster shell. The printed lettering looks to be:          'MA_ VI_';          ' _ARE';          ' _Stone _Ennet &amp; Co LTD_ RSLEM. ENGLAND. _OTEL.' This could be Dunn Bennet &amp; Co, Burslem from 1886. The crown mark was introduced 1887 and LTD after 1907 (<a href="https://www.thepotteries.org/mark/d/dunnbenn.html">https://www.thepotteries.org/mark/d/dunnbenn.html</a> ).</p> <p>'_tol _1652'. It could possibly be Bristol 1652 as seen in a similar looking fragment at waypoint 1317.</p> 

Way-point	Location	Description and photographs
		
1317	S33 44 43.8 E18 32 43.5	<p data-bbox="472 640 1430 741">One piece of oyster shell and ceramic fragments: Transfer printed, lined, gilded and scalloped. The printed lettering: 'Bristol Founded 16__'. It could possibly be similar to a fragment found at waypoint 1316.</p> 
1318	S33 44 48.3 E18 32 44.4	<p data-bbox="472 1256 1430 1285">A possible ferricrete flake.</p> 

Way-point	Location	Description and photographs
1319	S33 44 43.7 E18 32 42.4	Four white ceramic fragments. No photograph.
1320	S33 44 42.1 E18 32 41.3	<p data-bbox="469 338 1423 405">A transfer printed ceramic fragment ('MALING MADE IN ENGLAND') and an oyster shell.</p> 
1321	S33 44 41.9 E18 32 41.1	<p data-bbox="469 936 1070 1077">Three printed ceramic fragments:          'DUNN BEN__ BURNS__ MADE__';          Unclear, but last letter could be 'B';          Unclear, but some letters could be '__SEA__'.</p> 

1322	S33 44 40.3 E18 32 41.0	Ceramic fragments that are lined and transfer printed. The printed lettering shows: 'DEL.... CHIN...MADE IN...'. 
1323	S33 44 39.2 E18 32 40.3	Ceramic fragment of which two are white and one is lined. 
1324	S33 44 39.2 E18 32 39.9	Ceramic fragments of which one has a grapevine motif and the others are white. 

1325	S33 44 37.8 E18 32 37.4	Ceramic fragments with transfer printing and whiteware. One fragment has the initials of HMN with a thistle motif; the other fragment has letters: ‘_OTEL CAPE TOWN ____US with a horse-like crest’. A more complete fragment like this is found at waypoint 1329.
------	----------------------------	--------------------------------------------------------------------------------------------------------------------------------------------------------------------------------------------------------------------------------------------------------------------




1326	S33 44 35.8 E18 32 38.2	An oyster shell fragment and ceramics, all white and one with a partial rose transfer print.
------	----------------------------	----------------------------------------------------------------------------------------------



1327	S33 44 33.9 E18 32 35.3	White ceramics.
------	----------------------------	-----------------



<p>1328</p>	<p>S33 44 31.9 E18 32 35.0</p>	<p>The density of artefacts at this waypoint is much higher than the other waypoints spread across an area of about 60m and could possibly be part a site of similar density at waypoint 1329. Artefacts at both waypoints (1328 &amp; 1329) include fragments of ceramics, glass, metal, oyster shell and faunal remains (fish and mammal). The 1<sup>st</sup> photo shows clear glass fragments and ceramic fragments: lined and white; and oyster shell. The 2<sup>nd</sup> photo shows oyster shell, clear glass, slipware, transfer printed, lined and white ceramics. The partial printed lettering on the one fragment shows the letters: '....STONE ...Co Ltd....LAND'.</p> 
<p>1329</p>	<p>S33 44 31.8 E18 32 36.8</p>	<p>The density of artefacts at this waypoint is much higher than the other waypoints spread across an area of about 60m and could possibly be part a site of similar density at waypoint 1328. Artefacts at both waypoints (1328 &amp; 1329) include fragments of ceramics, glass, metal, oyster shell and faunal remains (fish and mammal). The 1<sup>st</sup> photo shows fragments of glass (clear, olive green, blue &amp; brown); ceramics (white, lined &amp; transfer printed). Letters printed of four of the pieces are shown in a close-up in the 2<sup>nd</sup> photo: '...SOUTH A.....'; '....ENGL.....'; '....ENGLAND.....'; '....HOTEL CAPE TOWN with a horse-like figure crest and the phrase SEMPER PARATUS under it'. The 3<sup>rd</sup> photo a few meters further away shows fragments of metal, transfer printed and white ceramics and oyster shell.</p>



<p>1330</p>	<p>S33 44 29.6 E18 32 39.4</p>	<p>An oyster shell, and fragments of glass (including the base of a wine glass) and ceramics (white and a blue- and brown-glazed stoneware)</p>   
<p>1331</p>	<p>S33 44 25.8 E18 32 38.8</p>	<p>White and lined ceramic fragments.</p>

		
1332	S33 44 25.5 E18 32 41.8	<p>Oyster shell and ceramic fragments that are white, lined (the olive green lined has gilding), transfer printed and</p> 
1333	S33 44 23.0 E18 32 37.8	Two white ceramic fragments. No photograph.
1334	S33 44 20.3 E18 32 39.9	Two white ceramic fragments. No photograph.

**Our Ref:** HM /CAPE TOWN METROPOLITAN / VISSERSHOK / REM OF MORNING STAR 141  
**Case No:** 27266SB0203  
**Enquiries:** Stephanie Barnardt  
**E-mail:** Stephanie.Barnardt@westerncape.gov.za  
**Tel:** 021 829 3315



**Applicants/Consultant details:** Jayson Orton, [jayson@asha-consulting.co.za](mailto:jayson@asha-consulting.co.za)

**RESPONSE TO NOTIFICATION OF INTENT TO DEVELOP: FINAL COMMENT**  
**In terms of Section 38(8) of the National Heritage Resources Act (Act 25 of 1999) and the Western Cape Provincial Gazette 6061, Notice 298 of 2003**

**NOTIFICATION OF INTENT TO DEVELOP: PROPOSED CONSTRUCTION OF THE RELOCATED N7 VISSERSHOK WEIGHBRIDGE (ALTERNATIVES 6 & 7) ON REM OF MORNING STAR 141, VISSERSHOK, SUBMITTED IN TERMS OF SECTION 38(1) OF THE NATIONAL HERITAGE RESOURCES ACT (ACT 25 OF 1999)**

The matter above has reference.

Heritage Western Cape is in receipt of the above matter received. This matter was discussed at the Heritage Officers meeting held on 16 February 2026.

You are hereby notified that, since there is no reason to believe that the proposed construction of the relocated N7 Vissershok Weighbridge (Alternatives 6 & 7) on Rem of Morning Star 141, Vissershok, no further action under Section 38 of the National Heritage Resources Act (Act 25 of 1999) is required. HWC Chance Finds and Accidental Finds Procedures to be included in the EMP and Environmental Authorization.

However, should any heritage resources, including evidence of graves and human burials, archaeological material and paleontological material be discovered during the execution of the activities above, all works must be stopped immediately, and Heritage Western Cape must be notified without delay.

This letter does not exonerate the applicant from obtaining any necessary approval from any other applicable statutory authority.

HWC reserves the right to request additional information as required.

Should you have any further queries, please contact the official above and quote the case number.

.....  
Waseefa Dhansay

**Assistant Director: Professional Services**



[www.westerncape.gov.za/cas](http://www.westerncape.gov.za/cas)

**Street Address:** Protea Assurance Building, Green Market Square, Cape Town, 8000 • **Postal Address:** P.O. Box 1665, Cape Town, 8000  
• **Tel:** +27 (0)21 483 5959 • **E-mail:** ceoheritage@westerncape.gov.za

**Straatadres:** Protea Assuransie-gebou, Groentemarkplein, Kaapstad, 8000 • **Posadres:** Posbus 1665, Kaapstad, 8000  
• **Tel:** +27 (0)21 483 5959 • **E-pos:** ceoheritage@westerncape.gov.za

**Idilesi yendawo:** kumgangatho 3, kwisakhiwo iprotea Assurance, Greenmarket Square, eKapa, 8000 • **Idilesi yeposi:** Inombolo yebhokisi yeposi 1665, eKapa, 8000 • **Iinombolo zomnxeba:** +27 (0)21 483 5959 • **Idilesi ye-imeyile:** ceoheritage@westerncape.gov.za



*Curriculum Vitae*

**Jayson David John Orton**

**ARCHAEOLOGIST AND HERITAGE CONSULTANT**

### **Contact Details and personal information:**

**Address:** 40 Brassie Street, Lakeside, 7945  
**Telephone:** (021) 788 1025  
**Cell Phone:** 083 272 3225  
**Email:** jayson@asha-consulting.co.za

**Birth date and place:** 22 June 1976, Cape Town, South Africa  
**Citizenship:** South African  
**ID no:** 760622 522 4085  
**Driver's License:** Code EB  
**Marital Status:** Married to Carol Orton  
**Languages spoken:** English, Afrikaans, basic French

### **Education:**

SA College High School	Matric	1994
University of Cape Town	B.A. (Archaeology, Environmental & Geographical Science)	1997
University of Cape Town	B.A. (Honours) (Archaeology) [First Class]	1998
University of Cape Town	M.A. (Archaeology)	2004
University of Oxford	D.Phil. (Archaeology)	2013

### **Employment History:**

Spatial Archaeology Research Unit, UCT	Research assistant	Jan 1996 – Dec 1998
Department of Archaeology, UCT	Field archaeologist	Jan 1998 – Dec 1998
UCT Archaeology Contracts Office	Field archaeologist	Jan 1999 – May 2004
UCT Archaeology Contracts Office	Heritage & archaeological consultant	Jun 2004 – May 2012
School of Archaeology, University of Oxford	Undergraduate Tutor	Oct 2008 – Dec 2008
ACO Associates cc	Associate, Heritage & archaeological consultant	Jan 2011 – Dec 2013
ASHA Consulting (Pty) Ltd	Director, Heritage & archaeological consultant	Jan 2014 –

### **Professional Accreditation:**

- Association of Southern African Professional Archaeologists (ASAPA) membership number: 233
- ASAPA CRM Section member with the following accreditation:
  - Principal Investigator: Coastal shell middens (awarded 2007)  
Stone Age archaeology (awarded 2007)  
Grave relocation (awarded 2014)
  - Field Director: Rock art (awarded 2007)  
Colonial period archaeology (awarded 2007)
- Association of Professional Heritage Practitioners (APHP) membership number: 43
  - Accredited Professional Heritage Practitioner

### **Memberships and affiliations:**

- South African Archaeological Society Council member 2004 – 2016
- Assoc. Southern African Professional Archaeologists (ASAPA) member 2006 –
- UCT Department of Archaeology Research Associate 2013 – 2017
- Heritage Western Cape APM Committee member 2013 – 2023
- UNISA Department of Archaeology and Anthropology Research Fellow 2014 –
- Fish Hoek Valley Historical Association 2014 –
- Kalk Bay Historical Association 2016 –
- Association of Professional Heritage Practitioners member (CRM Section) 2016 –
- Southern African Field Archaeology section editor 2021 –

### **Fieldwork and project experience:**

I have extensive experience as Field Director and Principal Investigator throughout Western and Northern Cape, and the western Free State and Eastern Cape. I also work in the eastern part of South Africa through partnership with an Iron Age accredited colleague.

#### Feasibility studies:

Heritage feasibility studies examining all aspects of heritage from the desktop

#### Phase 1 surveys and impact assessments:

- Project types
  - Notification of Intent to Develop applications
  - Heritage Impact Assessments
    - Self-standing assessments under Section 38(1) of the NHRA
    - Assessments under NEMA and Section 38(8) of the NHRA
  - Archaeological specialist studies
  - Strategic assessments
  - Phase 1 archaeological test excavations in historical and prehistoric sites
    - Archaeological research projects
- Development types
  - Mining and borrow pits
  - Roads (new and upgrades)
  - Residential, commercial and industrial development
  - Agricultural developments
  - Dams and pipe lines
  - Power lines and substations
  - Renewable energy facilities (wind, solar and hydro-electric)

#### Phase 2 mitigation and research excavations:

- ESA open sites
  - Duinefontein, Gouda, Namaqualand
- MSA rock shelters
  - Fish Hoek, Yzerfontein, Cederberg, Namaqualand
- MSA open sites
  - Swartland, Bushmanland, Namaqualand
- LSA rock shelters
  - Cederberg, Namaqualand, Knersvlakte, Bushmanland
- LSA open sites (inland)
  - Swartland, Franschhoek, Namaqualand, Bushmanland, De Aar
- LSA coastal shell middens
  - Melkbosstrand, Yzerfontein, Saldanha Bay, Paternoster, Dwarskersbos, Infanta, Knysna, Namaqualand coast, Knersvlakte
- LSA burials
  - Melkbosstrand, Saldanha Bay, Namaqualand coast, Knysna
- Historical sites
  - Waterfront (fort, dump and well), Noordhoek (cottage), variety of small excavations in central Cape Town and surrounding suburbs, Franschhoek (farmstead and well)
- Historic burial grounds
  - Green Point (Prestwich Street), V&A Waterfront (Marina Residential), Paarl, Beaufort West, Paarl, De Aar

### **Awards:**

1998: Frank Schweitzer memorial book prize for an outstanding student.

2015/2016: Western Cape Government Cultural Affairs Awards: Best Heritage Project.