

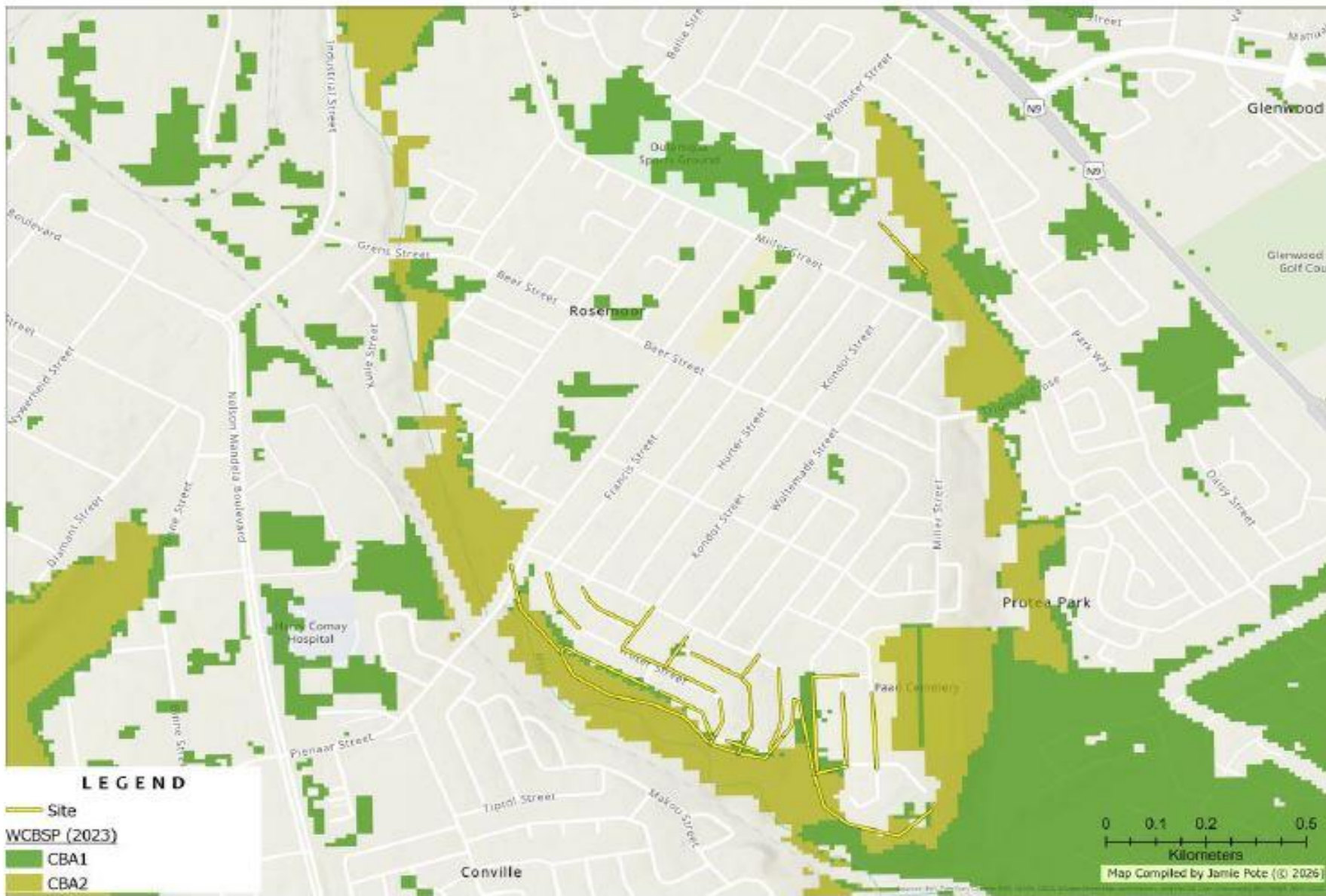
APPENDIX B2: FIGURE 1: MAP SHOWING THE DELINEATED EXTENT OF SEEP WETLANDS ALONG THE MEUL RIVER AND ITS EASTERN TRIBUTARY.



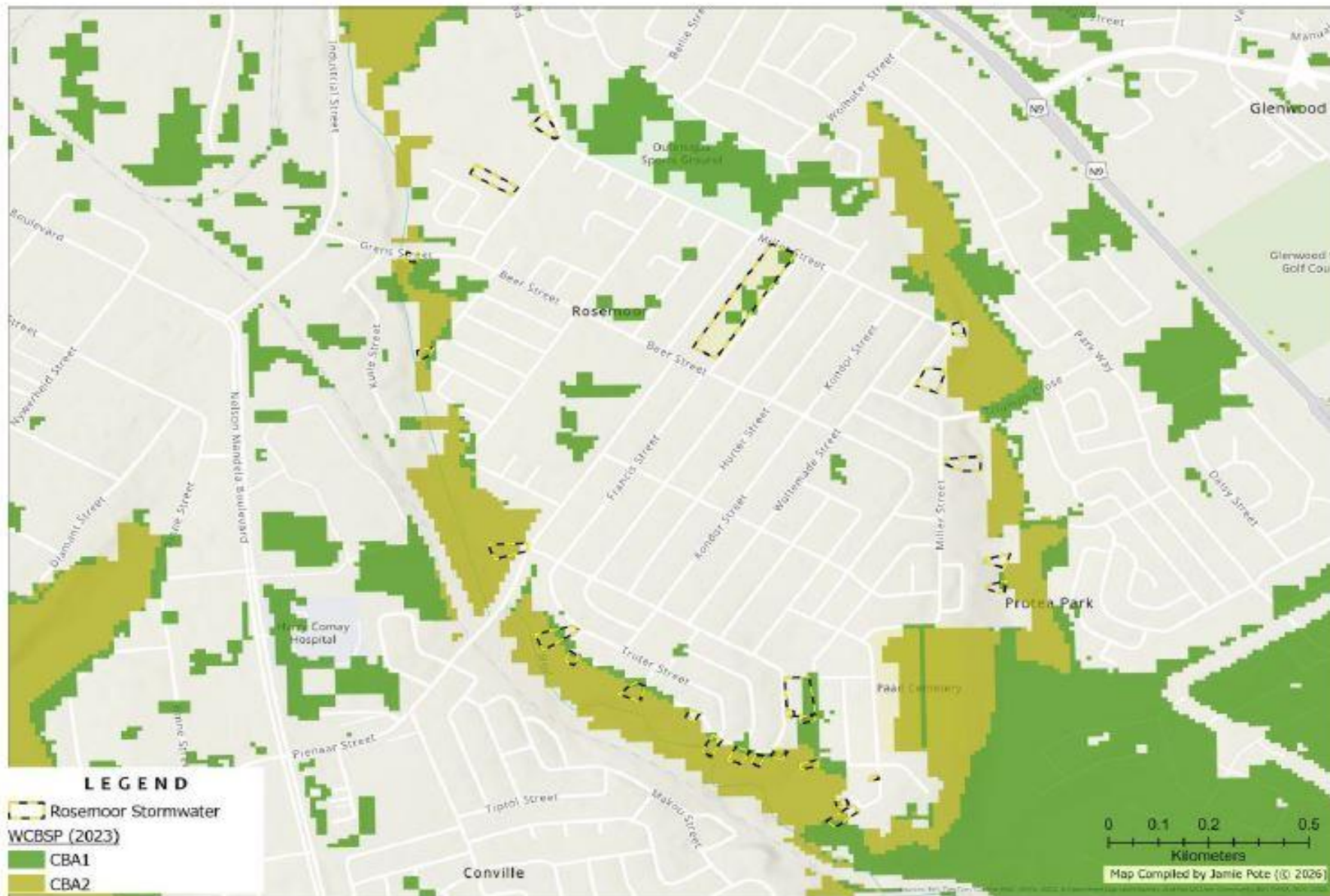
APPENDIX B2: FIGURE 2: MAP SHOWING THE DELINEATED EXTENT OF SEEP WETLANDS ALONG THE MEUL RIVER AND ITS EASTERN TRIBUTARY. THE PIPELINE CROSSES A STORMWATER CHANNEL AT THE POSITION INDICATED BY THE RED ARROW.



APPENDIX B2: FIGURE 3: WESTERN CAPE BIODIVERSITY SPATIAL PLAN (WCBSP, 2023) –THE SITE DOES OVERLAP WITH SOME DESIGNATED CBA 1, CBA 2 AND ESA 2 AREAS (SEWERAGE PIPELINES).



APPENDIX B2: FIGURE 4: WESTERN CAPE BIODIVERSITY SPATIAL PLAN (WCBSP, 2023) –THE SITE DOES OVERLAP WITH SOME DESIGNATED CBA 1, CBA 2 AND ESA 2 AREAS (STORMWATER OUTLETS).



APPENDIX B2: FIGURE 5: NO-GO MAP.



APPENDIX B2: FIGURE 6: NO-GO MAP – BULK SEWERAGE PIPELINE AND STORMWATER OUTLETS.



APPENDIX B2: FIGURE 7: NO-GO MAP – SEWERAGE BY-PASS PIPELINE.

